



**An  
Phríomh-Oifig  
Staidrimh**

Central  
Statistics  
Office

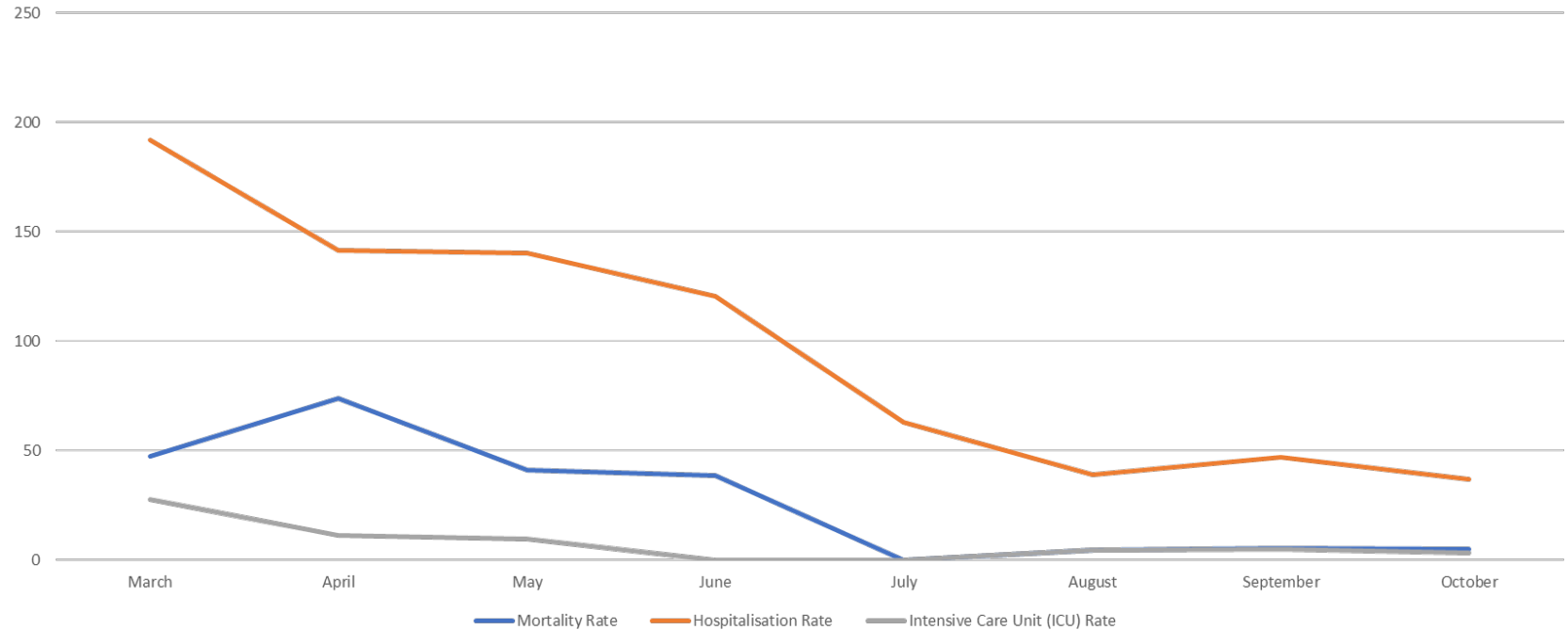
# COVID-19 Cabinet Committee

26 November 2020

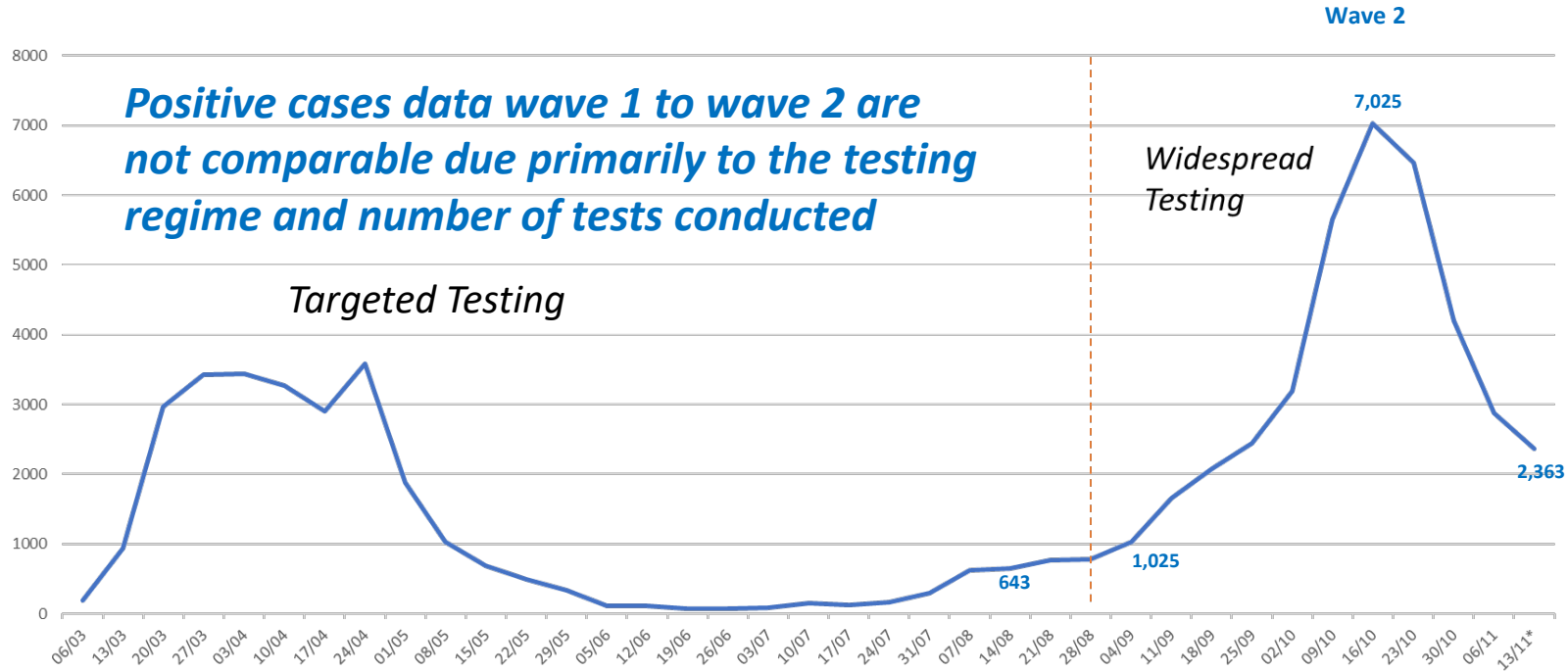
CSO



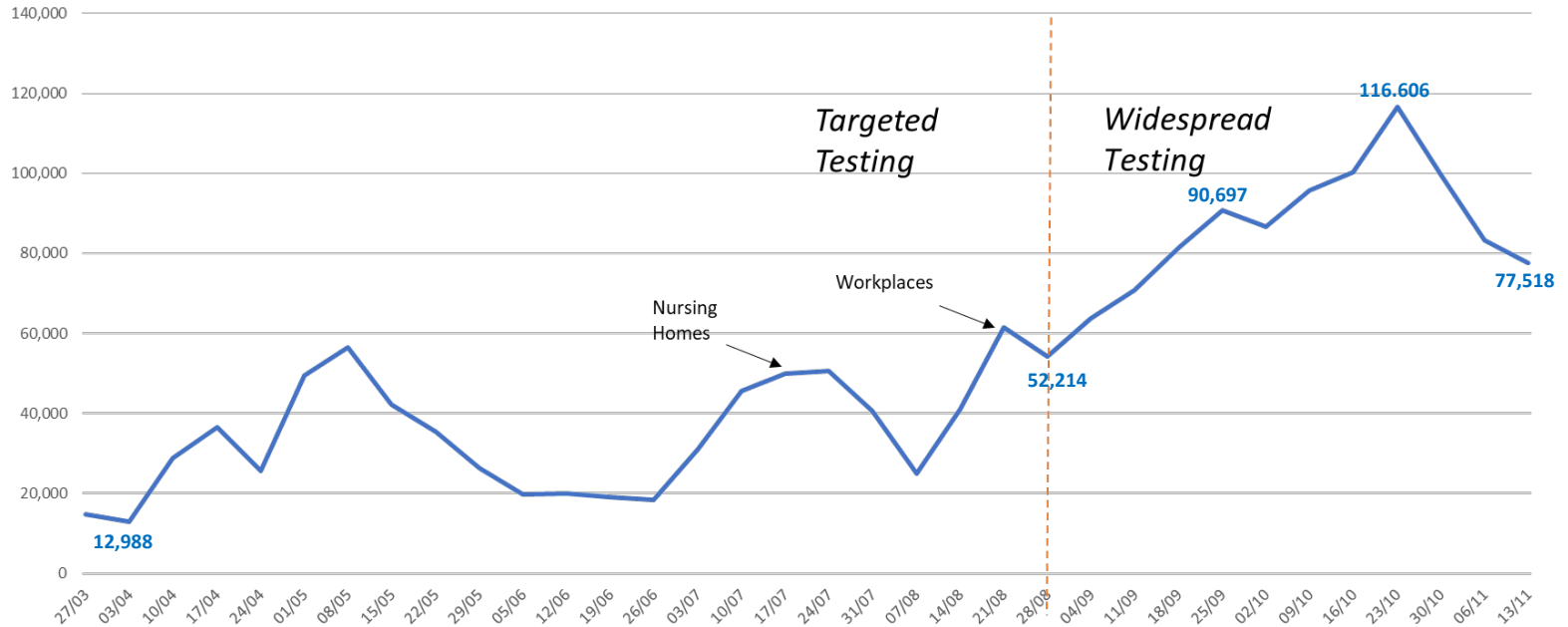
## Hospitalisation rates, ICU Rates and Mortality rates (rates per 1,000 of population);



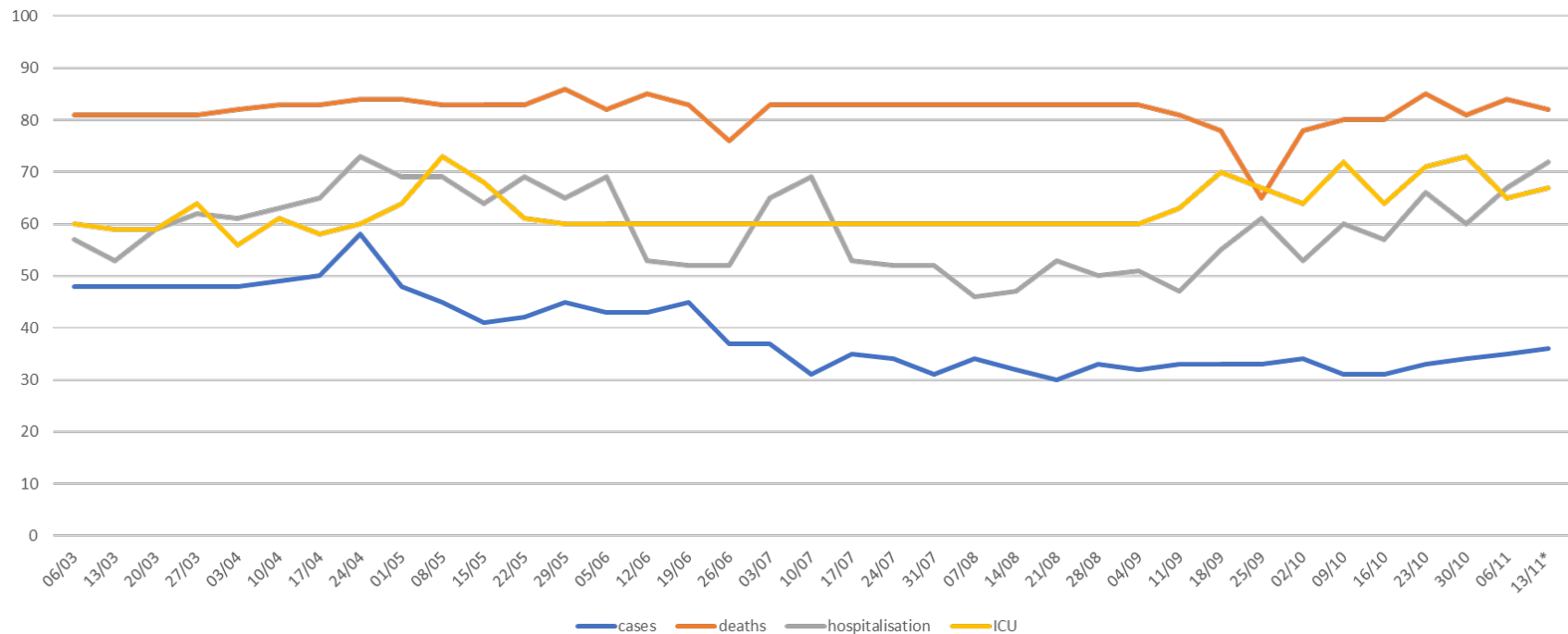
# Weekly positive cases



# Weekly tests completed for the whole period of the pandemic



# Median age of Deaths, Hospitalisations, ICU and Positive Cases



# Additional insights

- 25% of cases attributable to people with underlying conditions yet this cohort account for 93% of COVID-19 deaths
- In terms of underlying conditions, chronic heart disease was present in 44% of COVID-19 deaths
- 65+ age group account for 13% of the population but 92% of COVID-19 deaths
- 80+ age group account for circa. 3% of the population but 64% of COVID-19 deaths
- Just over half (52%) of all confirmed cases are linked to an outbreak



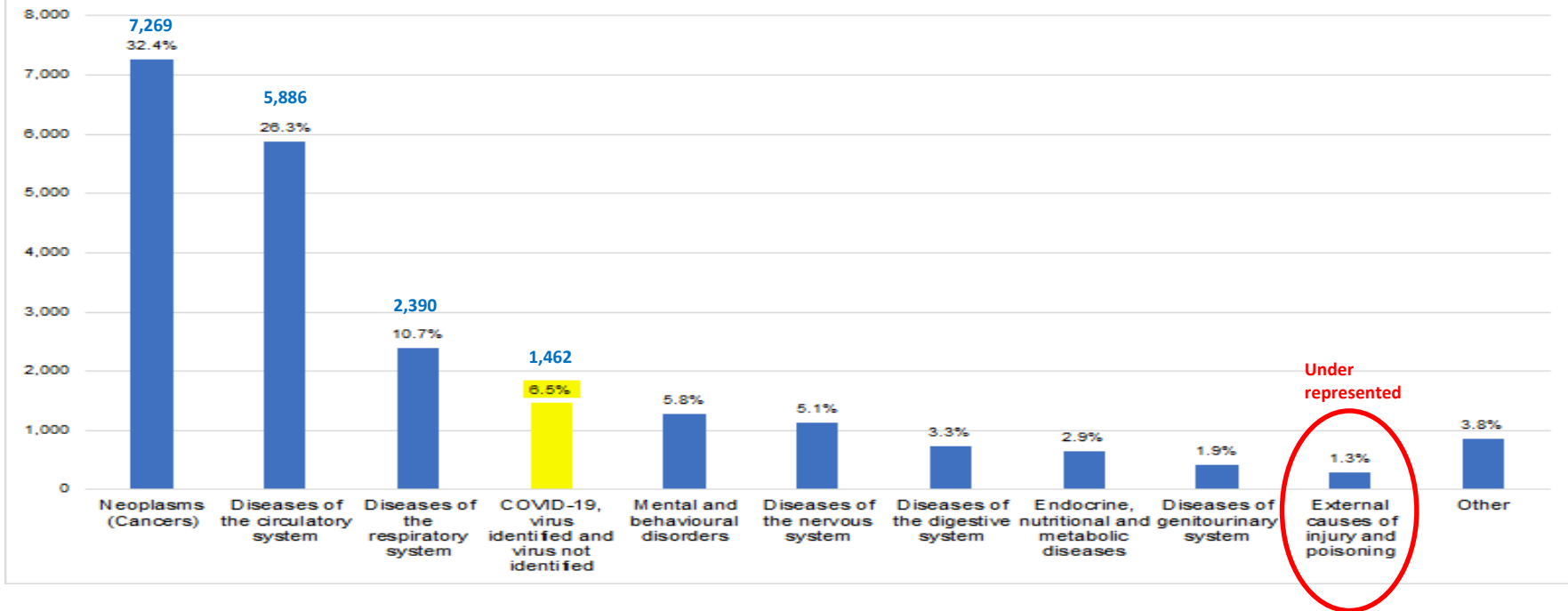
# Deaths and cases – Geography – cumulative %'s

- **Dublin:** 48% of deaths    38% of cases    28% of population
- **Kildare:** 9% of deaths    6% of cases    5% of population
- **Cork:** 4% of deaths    9% of cases    12% of population
- **Meath:** 4% of deaths    5% of cases    4% of population
- **Donegal:** 3% of deaths    4% of cases    3% of population
- Note Donegal cases clustered in wave 2 – was at 2% of cases from early in pandemic, hit 3% w.e. 2 Oct and hit 4% w.e. 30 Oct



# Top 10 Underlying Causes Of Death: Jan – Oct 2020

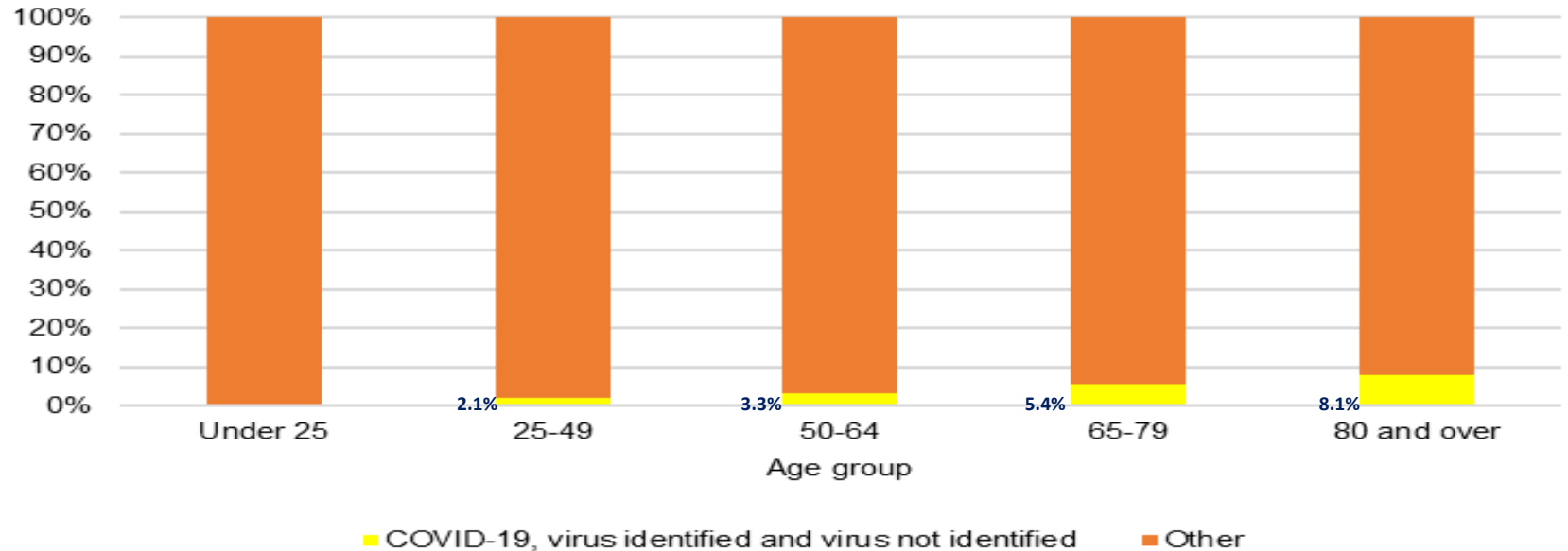
Figure 1 Top ten registered causes of death, January - October 2020





# COVID-19 deaths as proportion of total deaths by age group

Figure 2 Share of deaths with Underlying Cause of Death (UCOD) of COVID-19, virus identified and not identified by age group, January - October 2020

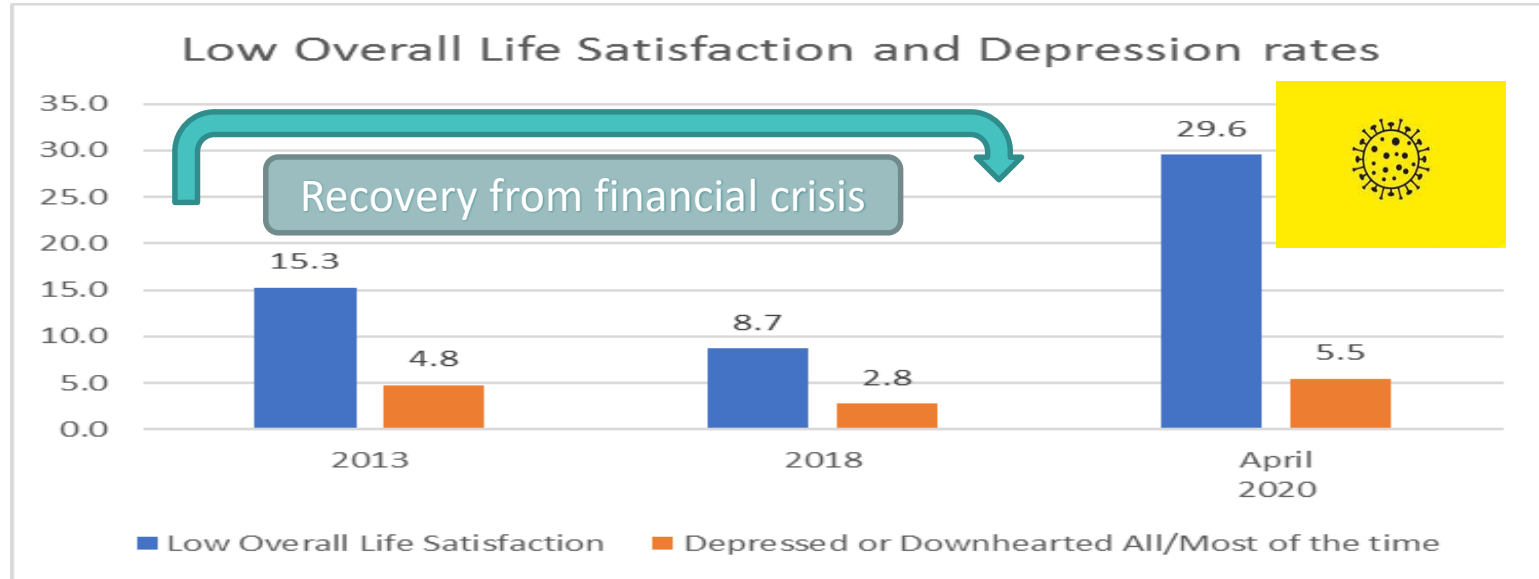


# Excess Deaths

- No internationally agreed methodology
- Excess mortality March - September 2020
- Estimated between 876 and 1,192
- Deaths above those likely to be experienced under normal circumstances

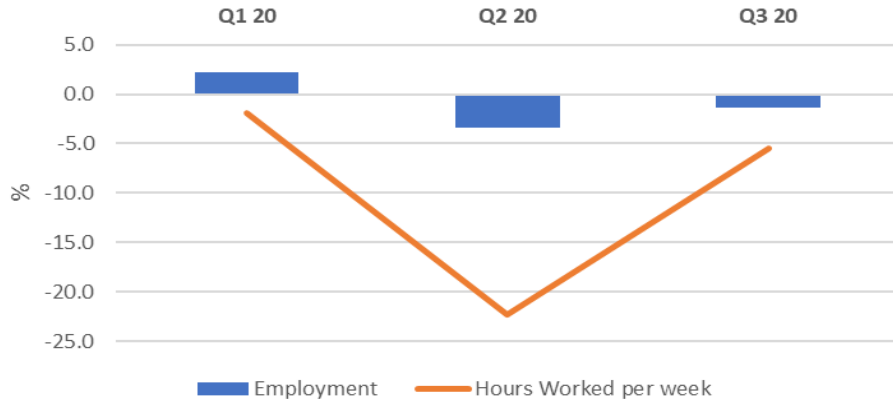


# Well Being

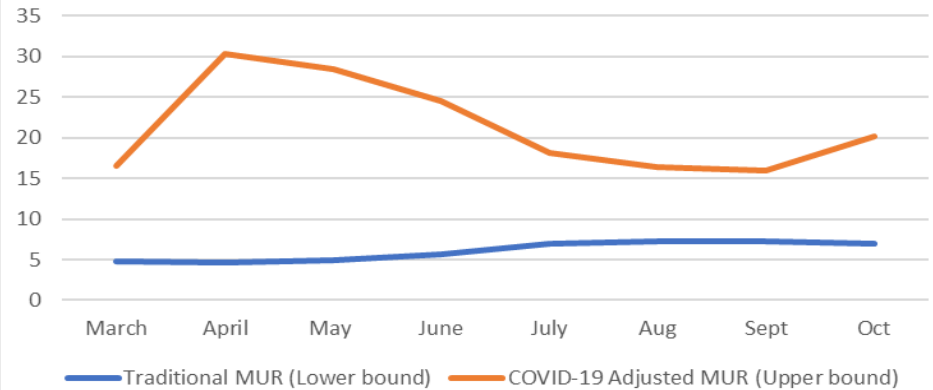


# Key Labour Market trends

Annual changes in Employment and number of hours worked per week, Q1 to Q3 2020



Unemployment rate 15-75 year olds - March 2020 to October 2020



### Pre COVID-19<sup>1</sup>

**Main place of work**

Share of persons in employment who did any work from home: **21%**

Employer's or own premises: **79%**

Home: **5%**

### Q3 2020<sup>2</sup>

**Main place of work**

Share of persons in employment who did any work from home: **36%**

Home: **28%**

Employer's or own premises: **53%**

**12,358** Households participated in the Q3 survey - Thank you from Suirbhéanna **CSO** Surveys

<sup>1</sup>In the four weeks prior to COVID-19  
<sup>2</sup>In the four weeks prior to interview in Q3 2020





An  
Phríomh-Oifig  
Staidrimh

Central  
Statistics  
Office

