

TYPICAL CLASSROOM PLAN (Natural daylight & ventilation from one side only)

- No. GENERAL
- Good quality daylight distribution is required in each classroom and the average daylight factor should be a minimum of 4.5% with the emphasis on an even light distribution through the space. A schedule of all daylight factors for classrooms and all other rooms is to be provided as part of the Stage 2A submission. In calculating the daylight factor the computer areas and the area 700mm in front of the storage wall, if provided, may be excluded. If rooms must be north facing due to site restrictions efforts should be made to achieve solar penetration to the rooms.

Window cill heights in classrooms shall be a minimum of 700mm above the finished floor level.

Adequate natural ventilation should be achievable in classrooms without draughts. The window design with respect to geometry and opening sections shall be in compliance with Section: 3, Natural Ventilation & Overheating, TGD-030 and must take into account overheating and air tightness standards. The resultant dry temperature shall not exceed 25°C for more than 5% of the school year in all habitable rooms and teaching spaces.

Blinds on windows in teaching spaces shall be manually operated heavy duty contract grade steel tube spring-less rollers, complete with side winder ball chain control units and child safety clips appropriately sized for each opening and shall be in compliance with Irish Standard ISEN 13120 - Internal Blinds. The blind material shall be in compliance with Clause 4: Blinds, TGD-030 and should meet the designation of 'flameproof' when assessed in accordance with BS 3120: 1959. A test certificate as in Appendix C of "Fire safety of furnishings and fittings in places of assembly" should be supplied for each item specified.
 - Classroom door with a minimum clear opening width of 850mm, door to incorporate 1450 x 190mm safety glazing strip.

- FIXED FURNITURE
- 760mm high x 600mm deep x 3200mm long wet area unit (closed off with unit doors) with 1500 x 500mm stainless steel double bowl double drainer sink & single swivel on/off mixer tap (refer to TGD 002) with 3200mm x 300mm high tiled splash back above unit.
 - IT Area - 3000mm long x 600mm deep counter top for computers, fitted 670mm above FFL with Dado trunking fitted above.
 - Coat rail 3000mm minimum length suitable for 30 No. coats, fixed 1000-1200mm above FFL
 - Open shelving unit consisting of 4000mm of shelving, fixed 1200-1300mm above FFL
 - Storage unit consisting of sliding door system with 6mm bulletin board material fixed to doors and 11000mm of 600mm deep plus 11000mm of 300mm deep heavy duty adjustable shelving, no part of shelving should be greater than 2200mm above FFL
 - 2400 x 1200mm magnetic white board, fixed 800-900mm above FFL. Where an interactive board is being supplied (by others) the white board should be reduced to 1200 x 1200mm.
 - 2400 X 1200mm notice board

- LOOSE FURNITURE
- As per school's approved furniture schedule (not part of building contract)
- ENSUITE TOILETS:
- Bracket mounted WHB, fixed 760mm above FFL (exposed pipework to be securely fixed to wall and boxed in where required to prevent vandalism) with 400 x 200mm tiled splash back over WHB
 - 1100mm high stud wall to rear wet area unit forming 300mm high splashback
 - Dual flush low water volume close-coupled WC, standard height, with flat topped cistern providing approx. 125 x 400mm flat surface.
 - Grab rails to walls and doors to comply with diagram 19 TGD M 2010
 - Window zone
 - Ensuite toilet door with a minimum clear opening width of 750mm

FINISHES:

Flooring: Classroom - sheet vinyl/linoleum/rubber with slip resistance of R9 to DIN: 51130.
Toilets - sheet vinyl/linoleum/rubber with a slip resistance of R10 to DIN: 51130

Walls: Durable, hard wearing, easy to clean paint

Ceilings: Suspended ceiling to have a sound attenuation performance as set out in TGD021.5 Acoustic Performance in Schools.

For further information on finishes refer to TGD-021 & TGD-022.

See Drawing TDG 022 - D02 for electrical symbol legend.

PRIMARY ROOM LAYOUTS		SCALE:	nts
TYPICAL CLASSROOM - PLAN		DRG No:	TGD 022 - D01
DRAWING 1 of 2		DATE:	Nov '08
FLOOR AREA (80 m ²)		APPROVED BY :	P+T
REVISION:	02	DATED:	Jan 2013
STAGE:	DOCUMENT ADDENDUM APPROVED	PREPARED BY:	C.D

- NOTES
- This document is published by the Department of Education & Science and provides guidance in relation to the requirements for a Typical Primary School Classroom. The document should be read in conjunction with the Technical Guidance Documents for Primary School Buildings as published by the Department of Education & Skills. <http://www.education.ie/en/School-Design/Technical-Guidance-Documents/>
 - Where works are carried out in accordance with the guidance in this document, this will, prima facie, indicate compliance with Technical Guidance Documents for Primary School Buildings as published by the Department of Education & Skills. However, the adoption of an approach other than that outlined in the guidance is not precluded provided that the relevant requirements of the Technical Guidance Documents are complied with.
 - Please do not scale the drawing use figured dimensions.
 - All dimensions given are in millimetres
 - All room dimensions are "internal dimensions".
 - Area - Net internal area of the room (including recess outside classroom).
 - All elevations are internal room elevations.

Each teaching space shall be controlled via two port motorised valves with electrically powered digital thermostats with a lockable range of 21 degrees Celsius +/- 3 degrees.

All thermostatic mixing valves on the hot water services to be connected as outlined on the "Thermostatic Mixing Valve Installation drawing RT-TMV-001" of TGD-30.

Mains water is only required at the classroom sink.

All lights fitted with automatic lighting controls must also have a manual on / off switch.

Lighting control in classrooms/ teaching spaces should be such that all lights in the space are linked to one sensor such that all lights respond in the same manner to the control signals.

Lighting controls in classrooms are to be based on absence detection to turn off lights and daylight sensing to dim lights as required to off, in response to the daylight sensor.

Lighting Controls in ensuite toilets to be based on manual on/off switching with automatic absence detection only. One linear high frequency fluorescent fitting per cubicle and lobby will suffice.

IT Area (no. 4 on plan) Dado Trunking to contain 5 no. data points and 16 no. 13 A socket outlets.

The teaching wall shall have one thermostat, one two-way PA loud speaker, a horizontal run dado rail trunking incorporating two twin socket outlets and one network point. The dado rail trunking shall be run at a height of 550mm above FFL.

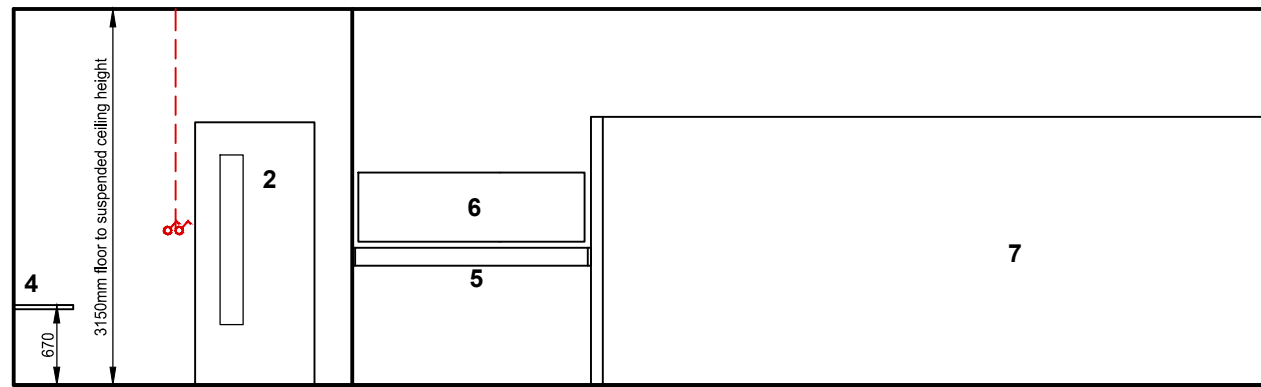
The exact location of the network point and associated socket outlet at the teacher's base shall be agreed with the school Principal at an early stage in the design development. Where there is no Principal the Department 's Technical Staff shall be contacted for advise and guidance.

1 no. twin socket outlet above the whiteboard for Data Projector
No other sockets are required.

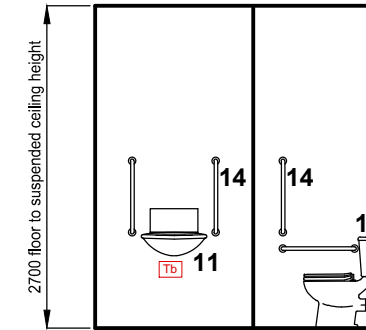
BUILDING SERVICES ENGINEERING SYMBOLS	Plan	Elevation
Light Switches (fixed 1100mm above FFL)		
Twin switched 13 A socket outlets		
Public Address Speaker (fixed 1600mm above FFL)		
Dado trunking		
Network point		
Water supply (hot & mains potable water)		
Radiator		
Room Thermostat (fixed 1500mm above FFL)		
Thermostatic blending valve		
1 x 49w surface mounted fluorescent c/w high efficiency T5 lamps and prismatic diffusers. Automatic dimming version.		
1 x 35w surface mounted fluorescent c/w high efficiency T5 lamps and prismatic diffusers.		
Ceiling mounted daylight/ movement sensor		
Movement Detector		

See Drawing TDG 022 - D01 to reference numbers on elevations with general description.

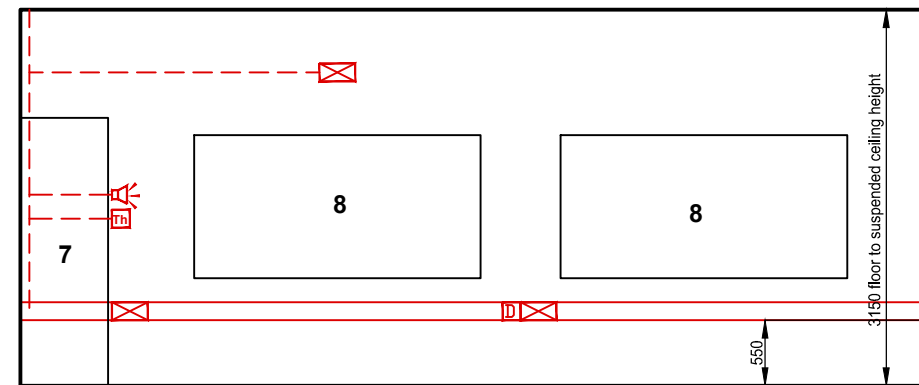
PRIMARY ROOM LAYOUTS	SCALE:	nts
TYPICAL CLASSROOM - ELEVATIONS DRAWING 2 of 2	DRG No:	TGD 022 - D02
	DATE:	Nov '08
REVISION: 03	DATED: August 2012	APPROVED BY: P+T
STAGE: DOCUMENT ADDENDUM APPROVED		PREPARED BY: C.D



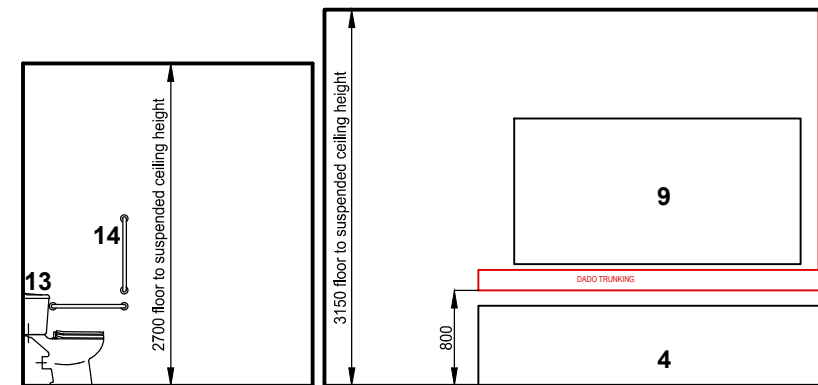
ELEVATION: A-A



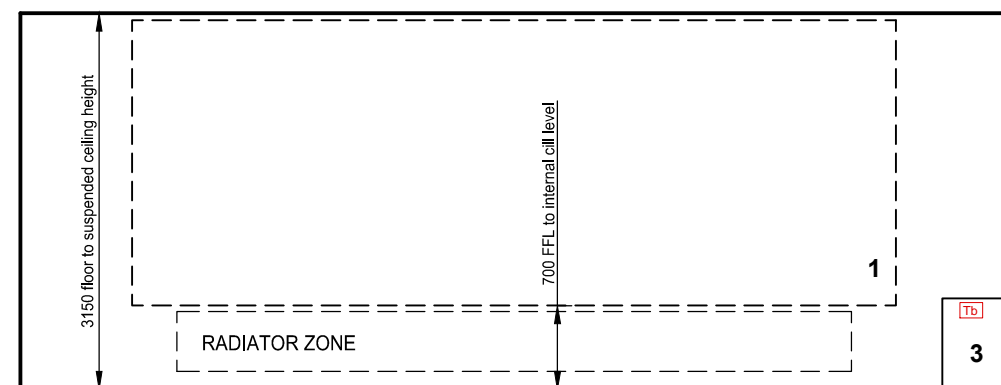
ELEVATION: F-F



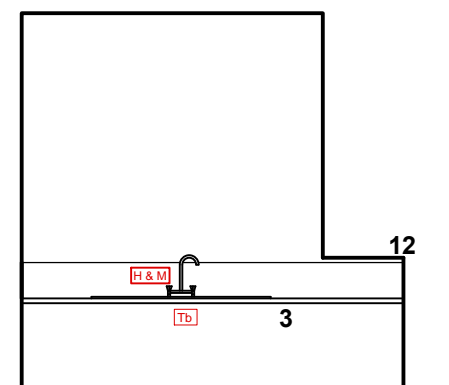
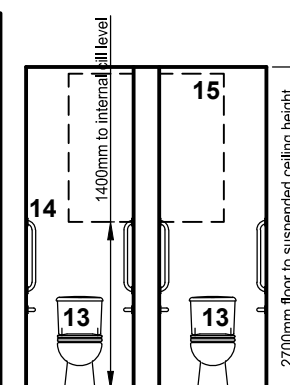
ELEVATION: B-B



ELEVATION: D-D



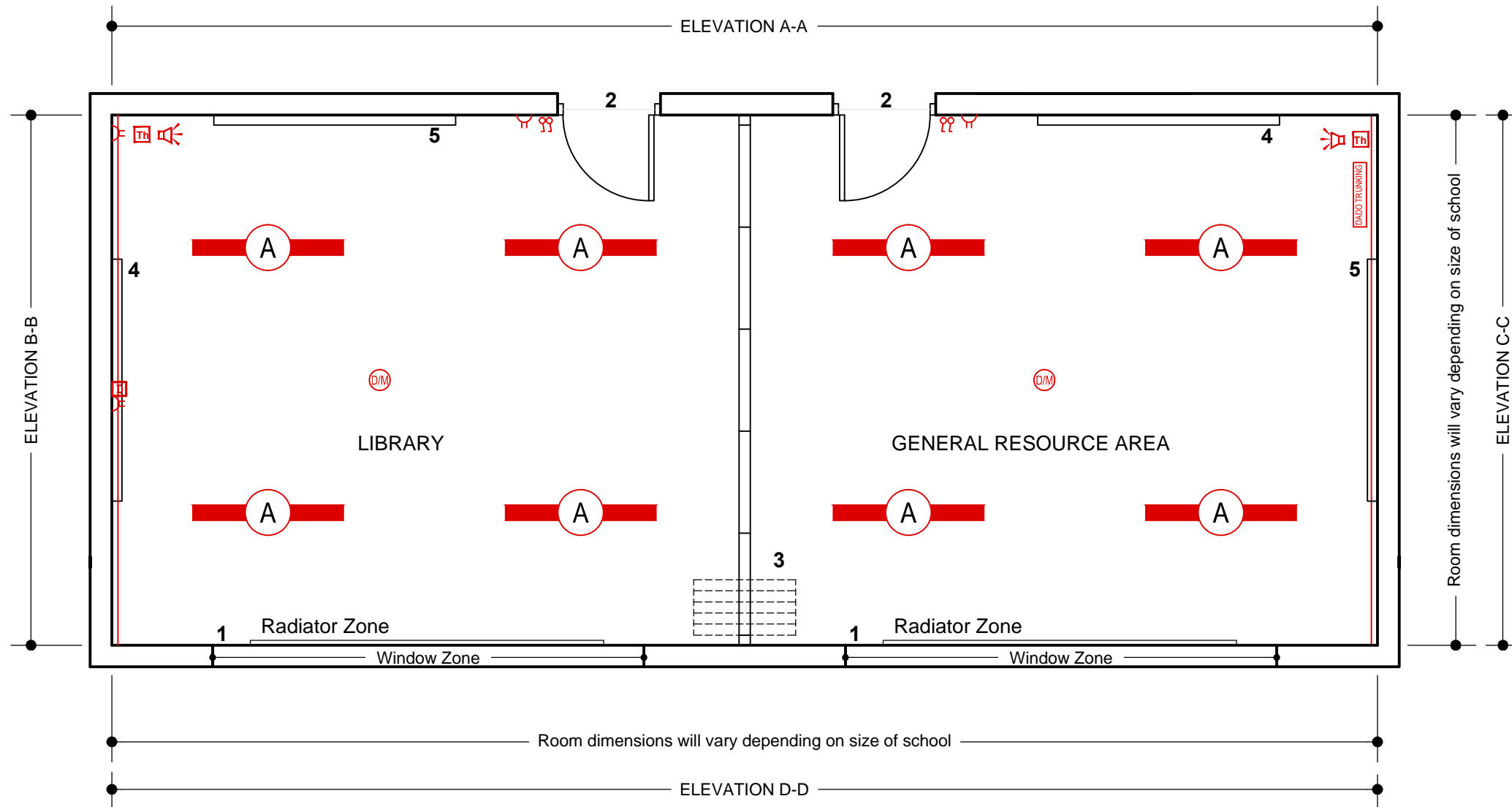
ELEVATION: C-C



ELEVATION: E-E

NOTES

- This document is published by the Department of Education & Science and provides guidance in relation to the requirements for a Typical Primary School Classroom. The document should be read in conjunction with the Technical Guidance Documents for Primary School Buildings as published by the Department of Education & Skills. <http://www.education.ie/en/School-Design/Technical-Guidance-Documents/>
- Where works are carried out in accordance with the guidance in this document, this will, prima facie, indicate compliance with Technical Guidance Documents for Primary School Buildings as published by the Department of Education & Skills. However, the adoption of an approach other than that outlined in the guidance is not precluded provided that the relevant requirements of the Technical Guidance Documents are complied with.
- Please do not scale the drawing use figured dimensions.
- All dimensions given are in millimetres
- All room dimensions are "internal dimensions".
- Area - Net internal area of the room (including recess outside classroom).
- All elevations are internal room elevations.



TYPICAL LIBRARY/ GENERAL RESOURCE AREA

No.	GENERAL
1.	A good quality daylight distribution is required in each room with the average day lighting factor for each room to be in the range 4.5 to 5.5% with the emphasis on an even light distribution throughout the space. A schedule of all rooms and associated daylight factor is to be provided. Adequate natural ventilation should be achievable without draughts. The window design with respect to geometry and opening sections shall be in compliance with Section: 3, Natural Ventilation & Overheating, TGD-030 and must take into account overheating and air tightness standards. The resultant dry temperature shall not exceed 25°C for more than 5% of the school year in all habitable rooms and teaching spaces. If rooms must be north facing due to site restrictions efforts should be made to achieve solar penetration to the rooms. Blinds on windows in teaching spaces shall be manually operated heavy duty contract grade steel tube spring-less rollers, complete with side winder ball chain control units and child safety clips appropriately sized for each opening and shall be in compliance with Irish Standard ISEN 13120 - Internal Blinds. The blind material shall be in compliance with Clause 4: Blinds, TGD-030 and should meet the designation of 'flameproof' when assessed in accordance with BS 3120: 1959. A test certificate as in Appendix C of "Fire safety of furnishings and fittings in places of assembly" should be supplied for each item specified.
2.	Classroom door with a minimum clear opening width of 850mm, door to incorporate 1450 x 190mm safety glazing strip.
3.	SLIDING/FOLDING SCREENS Folding door system with sound reduction of 45 db sound reduction with laboratory test results. Rolled steel or Aluminium finished in RAL 9010 ceiling sliding track fixed to structural support, door panel thickness 100mm with manually operated top and bottom sound seals. Profiled aluminium trims, top and bottom acoustic seal telescopic end expander, with internal integrated rubber sealing flaps and magnetic strips. Track system to be Type O Single point suspension from ceiling track. Laminate door finish in selected colour with surface spread of flame rating of min. Class O. Angle bead secured to 50 x 38mm timber grounds, structural support as per structural specification
FIXED FURNITURE	
4.	2400 x 1200mm magnetic white board, fixed 800-900mm above FFL
5.	2400 X 1200mm notice board
LOOSE FURNITURE	
As per school's approved furniture schedule (not part of building contract)	
FINISHES:	
Flooring: 7mm heavy contract cord carpet, 2.75kg per sq.m, 2.0m wide roll, fitted to manufacturered instruction, colour/patterns selected by Architect in consultation with the Client. Walls: Durable, hard wearing, easy to clean paint Ceilings: Suspended ceiling to have a sound attenuation performance as set out in TGD021.5 Acoustic Performance in Schools.	
For further information on finishes refer to TGD-021 & TGD-022.	

See Drawing TGD 022 - D04 for electrical symbol legend.

PRIMARY ROOM LAYOUTS		SCALE:	nts
TYPICAL LIBRARY/ GENERAL RESOURCE ROOM		DRG No:	TGD 022 - D03
PLAN (Drawing 1 of 2)		DATE:	Nov '08
REVISION:	02	DATED:	January 2013
APPROVED BY :			P+T
STAGE:	DOCUMENT ADDENDUM APPROVED		PREPARED BY:
		C.D	

- NOTES
- This document is published by the Department of Education & Science and provides guidance in relation to the requirements for a Typical Primary School Library/ General Resource Room. The document should be read in conjunction with the Technical Guidance Documents for Primary School Buildings as published by the Department of Education & Skills. <http://www.education.ie/en/School-Design/Technical-Guidance-Documents/>
 - Where works are carried out in accordance with the guidance in this document, this will, prima facie, indicate compliance with Technical Guidance Documents for Primary School Buildings as published by the Department of Education & Skills. However, the adoption of an approach other than that outlined in the guidance is not precluded provided that the relevant requirements of the Technical Guidance Documents are complied with.
 - Please do not scale the drawing use figured dimensions.
 - All dimensions given are in millimetres
 - All elevations are internal room elevations.

Mechanical and Electrical Services for Typical Library/
General Resource Room - to be read in conjunction with TGD
002, TGD 004 and TGD 030.

Each teaching space shall be controlled via two port motorised valves with electrically powered digital thermostats with a lockable range of 21 degrees Celsius + / - 3 degrees.

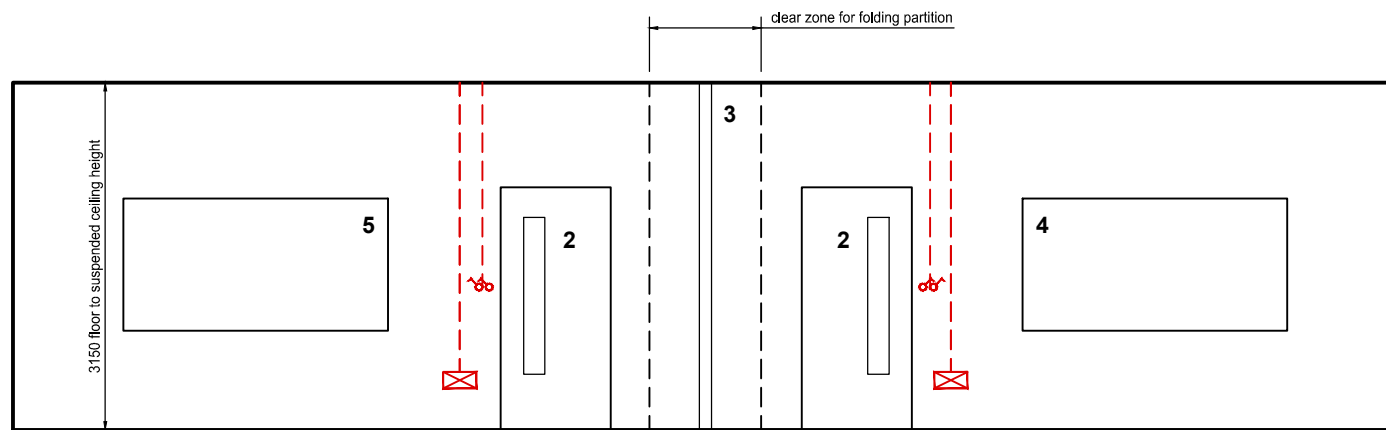
All lights fitted with automatic lighting controls must also have a manual on / off switch.

Separate lighting controls should be provided in each space with the lights in each space linked to one sensor in the space so that all lights in that space respond in the same manner to the control signals.

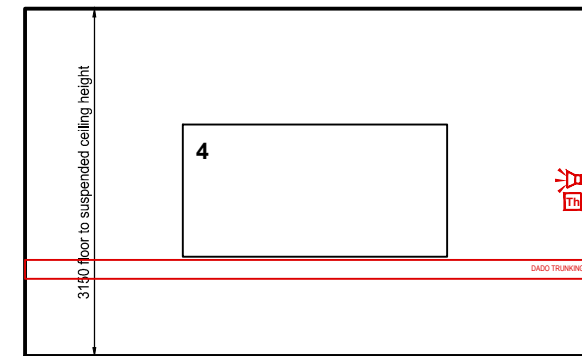
Lighting controls are to be based on absence detection to turn off lights and daylight sensing to dim lights as required to off, in response to the daylight sensor.

General Resource Room - Dado Trunking (location of trunking to be agreed with the school) incorporating 6 no. data network points and 20 no. 13 A socket outlets. 1 no. twin 13 A socket outlet, 1 no. digital room thermostat, 1 no. two way PA loud speaker locations as shown on drawing.

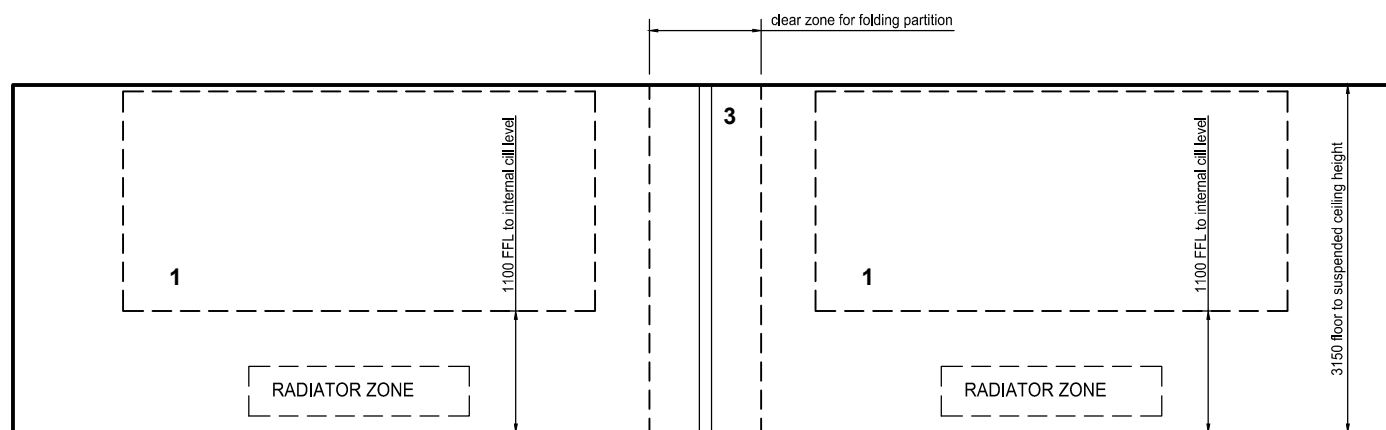
Library - Dado Trunking (location of trunking to be agreed with the school) incorporating 6 no. data network points and 20 no. 13 A socket outlets. 1 no. twin 13 A socket outlet, 1 no. digital room thermostat, 1 no. two way PA loud speaker locations as shown on drawing. No other sockets are required.



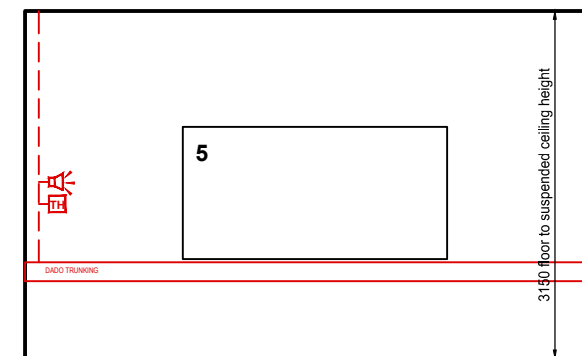
ELEVATION: A-A



ELEVATION: B-B



ELEVATION: D-D



ELEVATION: C-C

BUILDING SERVICES ENGINEERING SYMBOLS	Plan	Elevation
Light Switches (fixed 1100mm above FFL)	♂	♂
Twin switched 13 A socket outlets (fixed 300mm above FFL)	⊗	⊗
Public Address Speaker (fixed 1600mm above FFL)	⊗	⊗
Dado trunking fixed (600mm above FFL)	DADO TRUNKING	DADO TRUNKING
Network point (fixed 300mm above FFL)	D	D
Radiator	RADIATOR ZONE	RADIATOR ZONE
Room Thermostat (fixed 1500mm above FFL)	⊗	⊗
1 x 49w surface mounted fluorescent c/w high efficiency T5 lamps and prismatic diffusers. Automatic dimming version.	⊗	⊗
Ceiling mounted daylight/ movement sensor	⊗	⊗

See Drawing TDG 002 - D03 to reference numbers on elevations with general description.

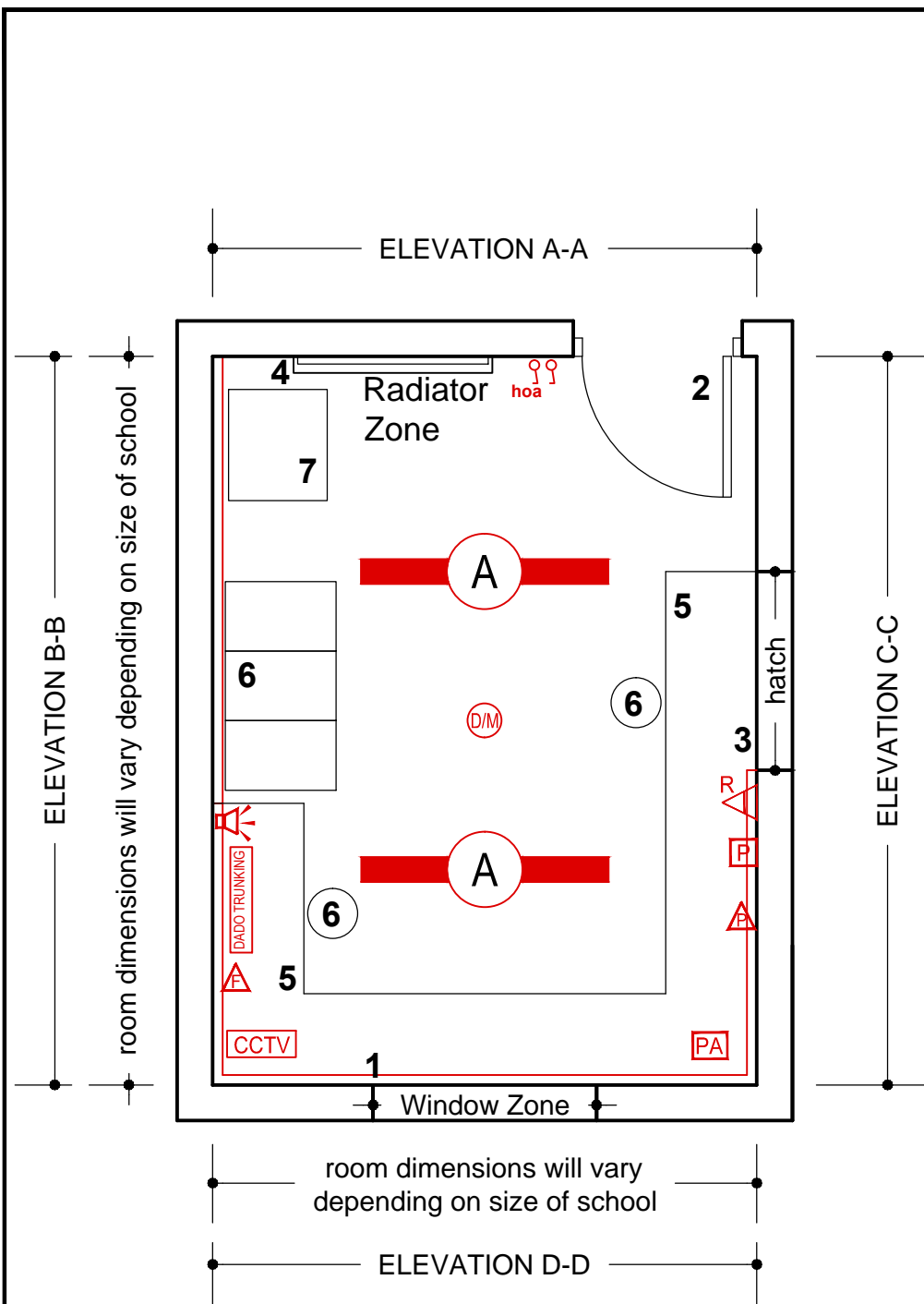
PRIMARY ROOM LAYOUTS	SCALE:	nts
TYPICAL LIBRARY/ GENERAL RESOURCE ROOM	DRG No:	TGD 022 - D04
ELEVATIONS (Drawing 2 of 2)	DATE:	Nov '08
REVISION: 01	DATED: August 2012	APPROVED BY: P+T
STAGE: DOCUMENT ADDENDUM APPROVED	PREPARED BY:	C.D

DEPARTMENT OF EDUCATION & SKILLS
An Roinn Oideachais agus Eolaíochta
PLANNING AND BUILDING UNIT



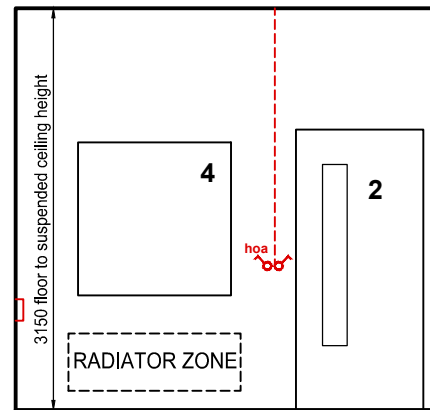
NOTES

- This document is published by the Department of Education & Science and provides guidance in relation to the requirements for a Typical Primary School Library/ General Resource Room. The document should be read in conjunction with the Technical Guidance Documents for Primary School Buildings as published by the Department of Education & Skills. <http://www.education.ie/en/School-Design/Technical-Guidance-Documents/>
- Where works are carried out in accordance with the guidance in this document, this will, prima facie, indicate compliance with Technical Guidance Documents for Primary School Buildings as published by the Department of Education & Skills. However, the adoption of an approach other than that outlined in the guidance is not precluded provided that the relevant requirements of the Technical Guidance Documents are complied with.
- Please do not scale the drawing use figured dimensions.
- All dimensions given are in millimetres
- All elevations are internal room elevations.

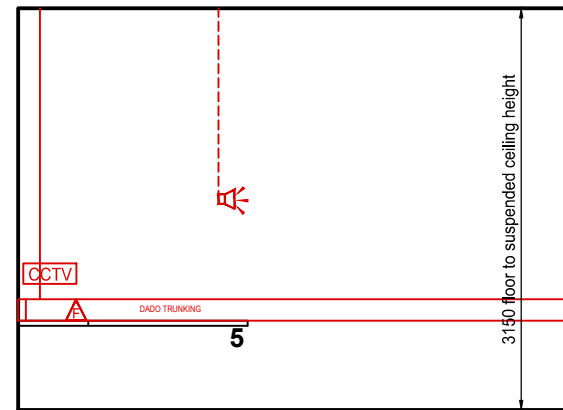


TYPICAL ADMIN/GENERAL OFFICE

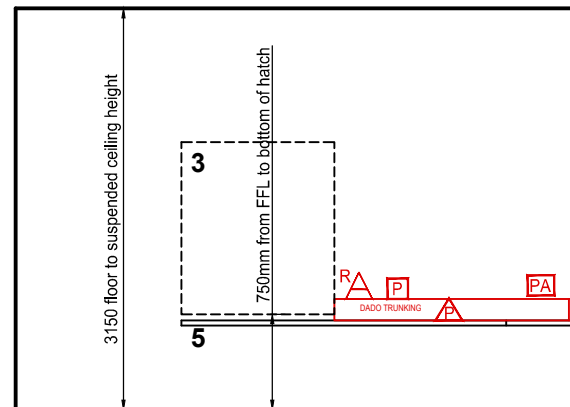
Note: if the General Office adjoins the Principal's Office a link door between offices may be required



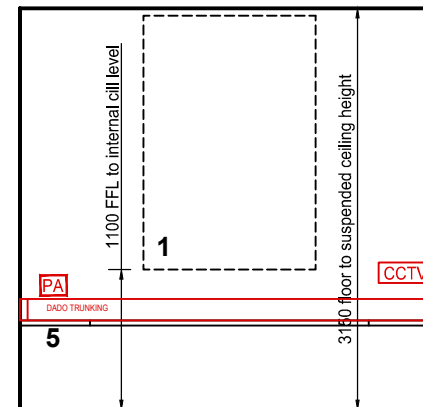
ELEVATION: A-A



ELEVATION: B-B



ELEVATION: C-C



ELEVATION: D-D

No.	GENERAL
1.	A good quality daylight distribution is required with the average day lighting factor for each room to be in the range 4.5 to 5.5% with the emphasis on an even light distribution throughout the space. A schedule of all rooms and associated daylight factor is to be provided. Adequate natural ventilation should be achievable without draughts. The window design with respect to geometry and opening sections shall be in compliance with Section: 3, Natural Ventilation & Overheating, TGD-030 and must take into account overheating and air tightness standards. The resultant dry temperature shall not exceed 25°C for more than 5% of the school year in all habitable rooms and teaching spaces. Blinds on windows shall be manually operated heavy duty contract grade steel tube spring-less rollers, complete with side winder ball chain control units and child safety clips appropriately sized for each opening and shall be in compliance with Irish Standard ISEN 13120 - Internal Blinds. The blind material shall be in compliance with Clause 4: Blinds, TGD-030 and should meet the designation of 'flameproof' when assessed in accordance with BS 3120: 1959. A test certificate as in Appendix C of 'Fire safety of furnishings and fittings in places of assembly' should be supplied for each item specified.
2.	Entrance door with a minimum clear opening width of 850mm, door to incorporate 1450 x 190mm safety glazing strip.
3.	1200 x 1350mm security hatch with 6.5mm thick laminated glazed lockable unit to form opening between general office and entrance lobby, fixed 750mm above FFL
FIXED FURNITURE	
4.	1200 X 1200mm notice board
5.	550mm deep counter top fitted 700mm above FFL
LOOSE FURNITURE	
6.	As per school's approved furniture schedule (not part of building contract)
7.	Photocopy Machine (not part of building contract)

FINISHES:	
Flooring:	7mm heavy contract cord carpet, 2.75kg per sq.m, 2.0m wide roll, fitted to manufactures instruction, colour/patterns selected by Architect in consultation with the Client.
Walls:	Durable, hard wearing, easy to clean paint
Ceilings:	Suspended ceiling to have a sound attenuation performance as set out in TGD021.5 Acoustic Performance in Schools.
For further information on finishes refer to TGD-021 & TGD-022.	

Mechanical and Electrical Services for Typical Library/ General Resource Room - to be read in conjunction with TGD 002, TGD 004 and TGD030.

All lights fitted with automatic lighting controls must also have a manual on / off switch. Lighting control should be such that all lights in the space are linked to one sensor such that all lights respond in the same manner to the control signals. Lighting controls are to be based on absence detection to turn off lights and daylight sensing to dim lights as required to off, in response to the daylight sensor.


Dado trunking to contain 4 no. data network points & 5 twin 13 A socket outlets. Location of other electrical services as shown on drawing.

BUILDING SERVICES ENGINEERING SYMBOLS	Plan	Elevation
Light Switches (fixed 1100mm above FFL)	⊕	⊕
Hand/off/auto switch control for external lighting	⊕ ^{ho}	⊕ ^{ho}
PA System and Controls	PA	PA
PA Speaker - required if PA System is located in Principal's Office	⊕	⊕
Dado trunking fixed (600mm above FFL)	DADO TRUNKING	DADO TRUNKING
Radiator	RADIATOR ZONE	RADIATOR ZONE
Room Thermostat (fixed 1500mm above FFL)	Th	Th
1 x 49w surface mounted fluorescent c/w high efficiency T5 lamps and prismatic diffusers. Automatic dimming version.	⊕	
Ceiling mounted daylight/ movement sensor	⊕	
Phone Point	⊕	⊕
Fax Point - may be located in General Office	⊕	⊕
Panic Button (fitted directly above Dado Trunking)	P	P
Intercom receiver unit with magnetic door lock release	⊕	⊕
CCTV Monitoring Point - may be located in Principal's Office	CCTV	CCTV

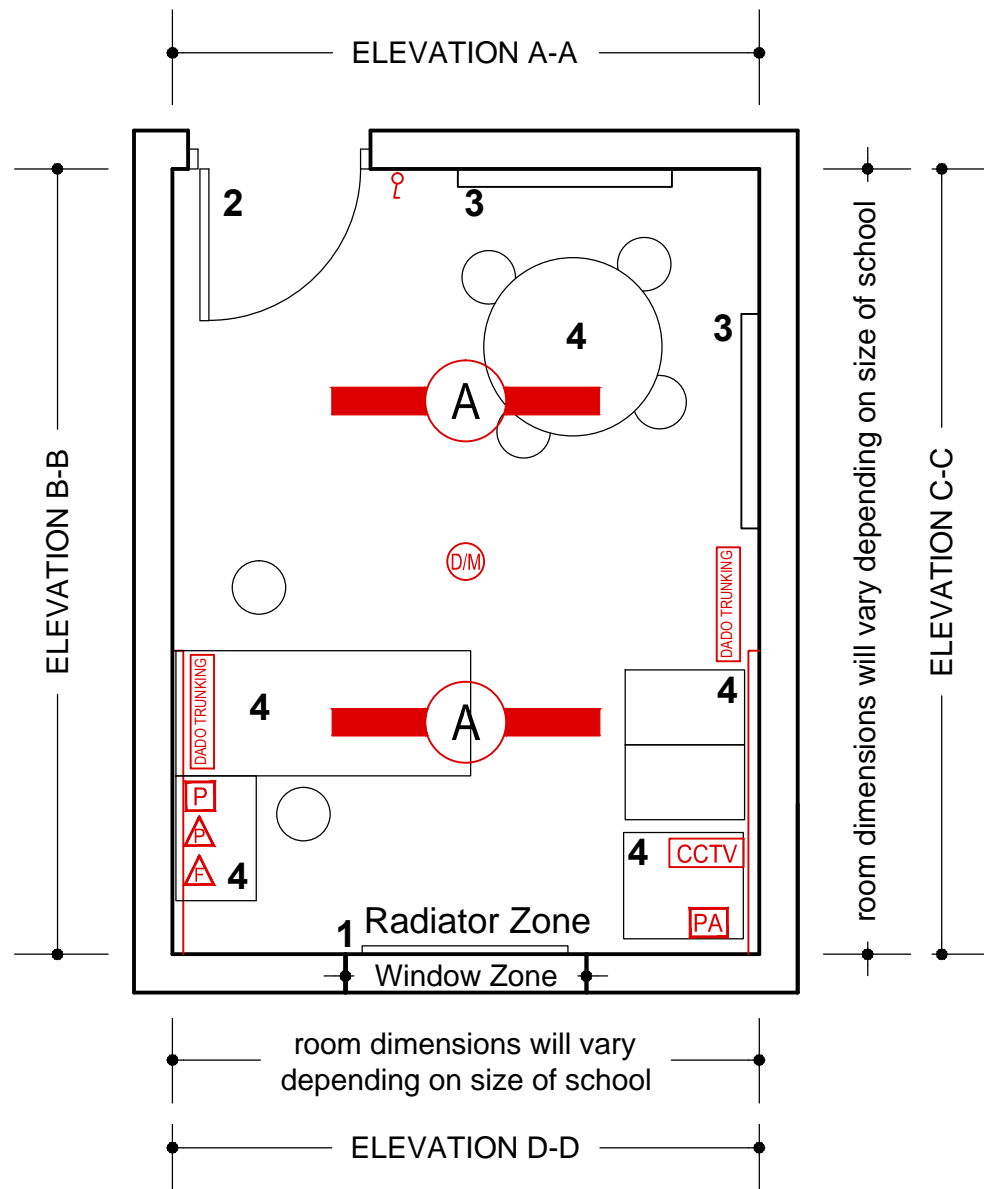
PRIMARY ROOM LAYOUTS	SCALE:	nts
TYPICAL ADMINISTRATION/ GENERAL OFFICE PLANS & ELEVATIONS	DRG No:	TGD 022 - D05
	DATE:	Nov '08

REVISION:	02	DATED:	January 2013	APPROVED BY :	P+T
STAGE:	DOCUMENT ADDENDUM APPROVED			PREPARED BY:	C.D

DEPARTMENT OF EDUCATION & SKILLS
An Roinn Oideachais agus Eolaíochta
PLANNING AND BUILDING UNIT

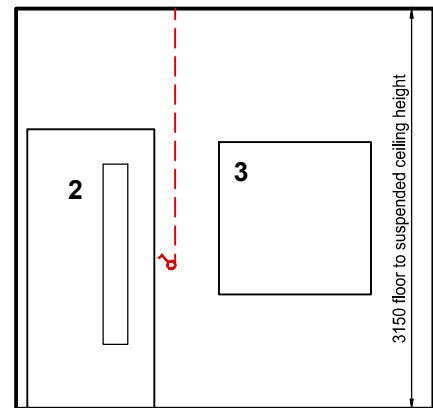


- NOTES
- This document is published by the Department of Education & Science and provides guidance in relation to the requirements for a Typical Primary School Administration/ General Office. The document should be read in conjunction with the Technical Guidance Documents for Primary School Buildings as published by the Department of Education & Skills. <http://www.education.ie/en/School-Design/Technical-Guidance-Documents/>
 - Where works are carried out in accordance with the guidance in this document, this will, prima facie, indicate compliance with Technical Guidance Documents for Primary School Buildings as published by the Department of Education & Skills. However, the adoption of an approach other than that outlined in the guidance is not precluded provided that the relevant requirements of the Technical Guidance Documents are complied with.
 - Please do not scale the drawing use figured dimensions.
 - All dimensions given are in millimetres
 - All elevations are internal room elevations.

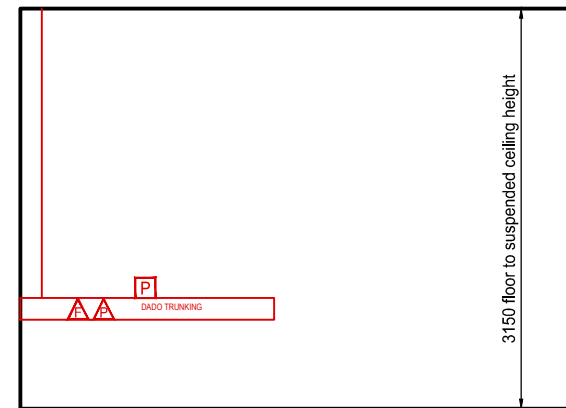


TYPICAL PRINCIPAL'S OFFICE

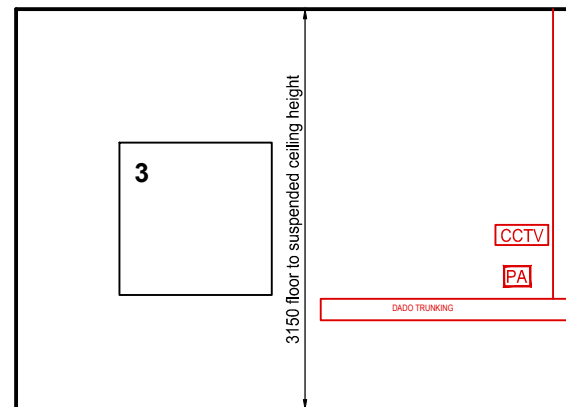
Note: if the General Office adjoins the Principal's Office a link door between offices may be required



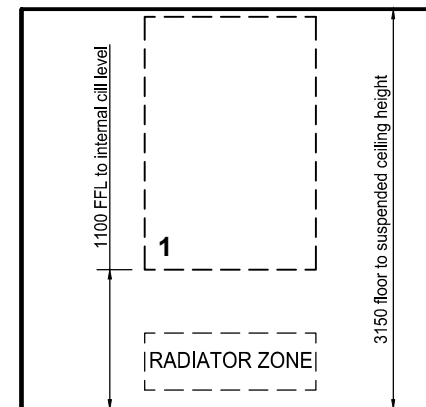
ELEVATION: A-A



ELEVATION: B-B



ELEVATION: C-C



ELEVATION: D-D

No.	GENERAL
1.	A good quality daylight distribution is required with the average day lighting factor for each room to be in the range 4.5 to 5.5% with the emphasis on an even light distribution throughout the space. A schedule of all rooms and associated daylight factor is to be provided. Adequate natural ventilation should be achievable without draughts. The window design with respect to geometry and opening sections shall be in compliance with Section: 3, Natural Ventilation & Overheating, TGD-030 and must take into account overheating and air tightness standards. The resultant dry temperature shall not exceed 25°C for more than 5% of the school year in all habitable rooms and teaching spaces. Blinds on windows shall be manually operated heavy duty contract grade steel tube spring-less rollers, complete with side winder ball chain control units and child safety clips appropriately sized for each opening and shall be in compliance with Irish Standard ISEN 13120 - Internal Blinds. The blind material shall be in compliance with Clause 4: Blinds, TGD-030 and should meet the designation of 'flameproof' when assessed in accordance with BS 3120: 1959. A test certificate as in Appendix C of "Fire safety of furnishings and fittings in places of assembly" should be supplied for each item specified.
2.	Entrance door with a minimum clear opening width of 850mm, door to incorporate 1450 x 190mm safety glazing strip.
FIXED FURNITURE	
3.	1200 X 1200mm notice board
LOOSE FURNITURE	
4.	As per school's approved furniture schedule (not part of building contract)

FINISHES:
 Flooring: 7mm heavy contract cord carpet, 2.75kg per sq.m, 2.0m wide roll, fitted to manufactures instruction, colour/pattern as selected by Architect in consultation with the Client
 Walls: Durable, hard wearing, easy to clean paint
 Ceilings: Suspended ceiling to have a sound attenuation performance as set out in TGD021.5 Acoustic Performance in Schools.
 For further information on finishes refer to TGD-021 & TGD-022.

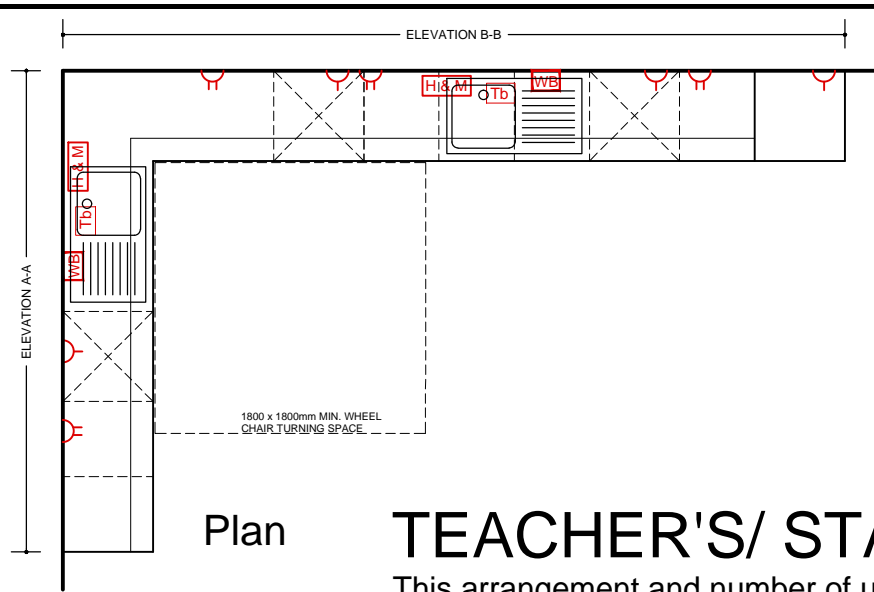
Mechanical and Electrical Services for Typical Library/ General Resource Room - to be read in conjunction with TGD 002, TGD 004 and TGD030.

All lights fitted with automatic lighting controls must also have a manual on / off switch.
 Lighting control should be such that all lights in the space are linked to one sensor such that all lights respond in the same manner to the control signals.
 Lighting controls are to be based on absence detection to turn off lights and daylight sensing to dim lights as required to off, in response to the daylight sensor.
 Each Dado trunking runs to contain 1 no. data network points & 3 single 13 A socket outlets.
 Location of other electrical services as shown on drawing.

BUILDING SERVICES ENGINEERING SYMBOLS	Plan	Elevation
Light Switches (fixed 1100mm above FFL)	⊕	⊕
PA System and Controls	PA	PA
Dado trunking fixed (600mm above FFL)	DADO TRUNKING	DADO TRUNKING
Radiator	RADIATOR ZONE	RADIATOR ZONE
Room Thermostat (fixed 1500mm above FFL)	Th	Th
1 x 49w surface mounted fluorescent c/w high efficiency T5 lamps and prismatic diffusers. Automatic dimming version.	⊖	⊖
Ceiling mounted daylight/ movement sensor	⊙	⊙
Phone Point	⊕	⊕
Fax Point - may be located in General Office	⊕	⊕
Panic Button (fitted directly above Dado Trunking)	P	P
CCTV Monitoring Point - may be located in General Office	CCTV	CCTV

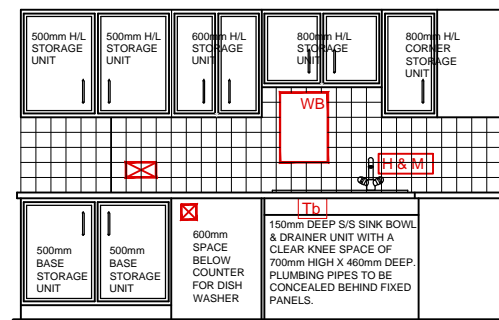
PRIMARY ROOM LAYOUTS		SCALE:	nts
TYPICAL PRINCIPAL'S OFFICE PLANS & ELEVATIONS		DRG No:	TGD 022 - D06
		DATE:	Nov '08
REVISION:	02	DATED:	January 2013
APPROVED BY:	P+T	PREPARED BY:	C.D

- NOTES**
- This document is published by the Department of Education & Science and provides guidance in relation to the requirements for a Typical Primary School Principal's Office. The document should be read in conjunction with the Technical Guidance Documents for Primary School Buildings as published by the Department of Education & Skills. <http://www.education.ie/en/School-Design/Technical-Guidance-Documents/>
 - Where works are carried out in accordance with the guidance in this document, this will, prima facie, indicate compliance with Technical Guidance Documents for Primary School Buildings as published by the Department of Education & Skills. However, the adoption of an approach other than that outlined in the guidance is not precluded provided that the relevant requirements of the Technical Guidance Documents are complied with.
 - Please do not scale the drawing use figured dimensions.
 - All dimensions given are in millimetres
 - All room dimensions are "internal dimensions".
 - Area - Net internal area of the room.
 - All elevations are internal room elevations.

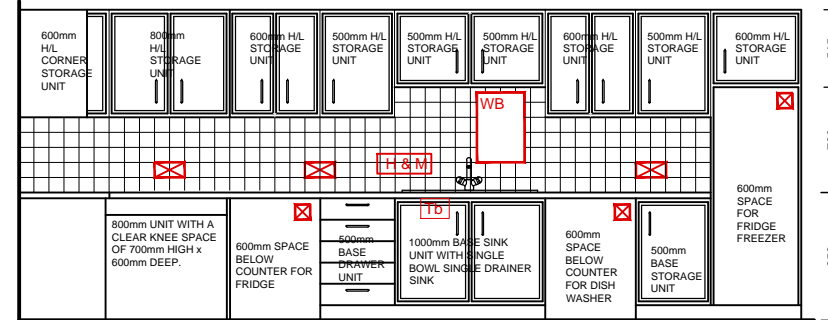


Plan TEACHER'S/ STAFF ROOM - Typical Layout

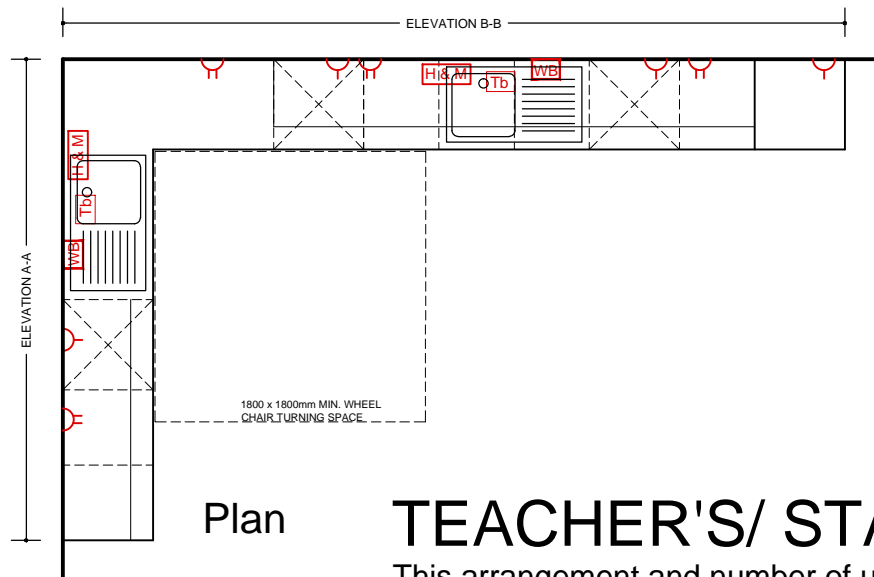
This arrangement and number of units is appropriate for 25 to 32 classroom school.



Elevation A-A

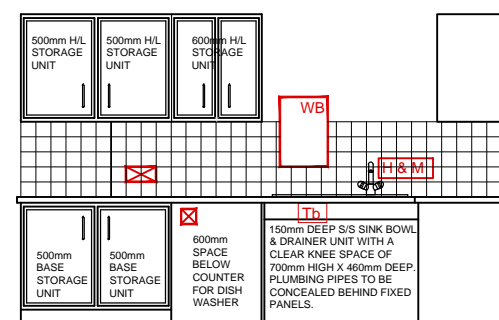


Elevation B-B

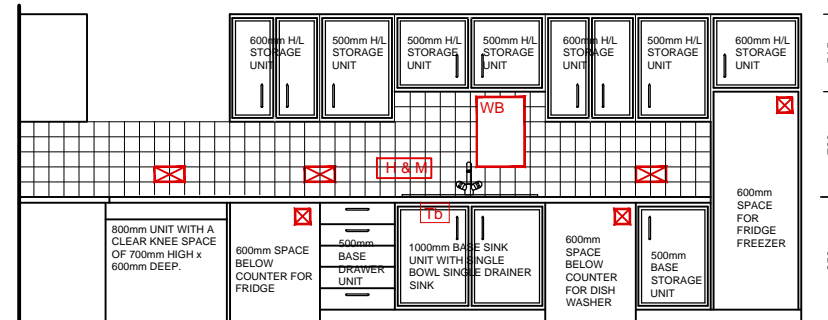


Plan TEACHER'S/ STAFF ROOM - Typical Layout

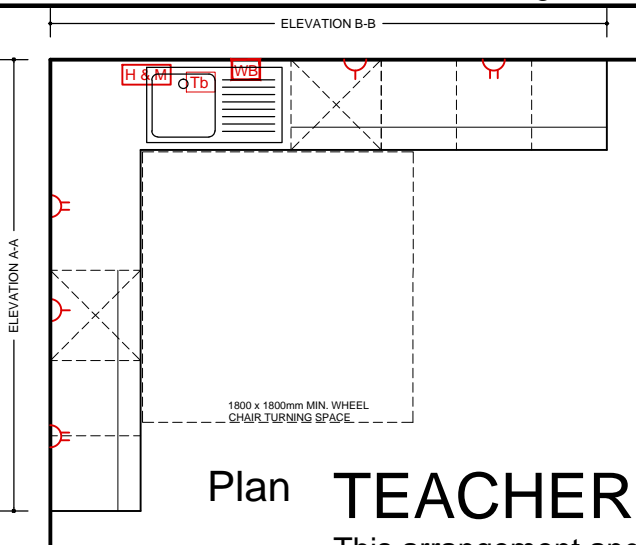
This arrangement and number of units is appropriate for 17 to 24 classroom school.



Elevation A-A

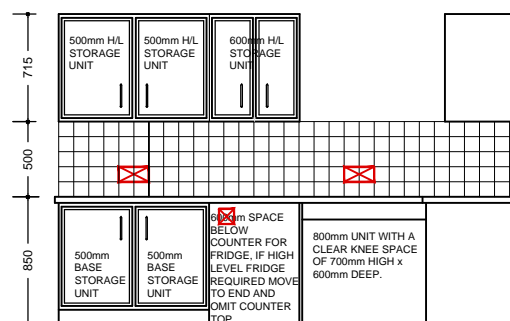


Elevation B-B

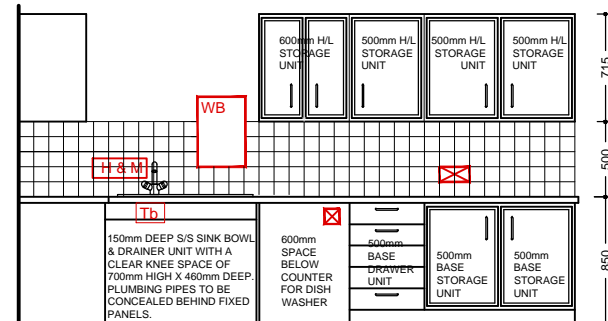


Plan TEACHER'S/ STAFF ROOM - Typical Layout

This arrangement and number of units is appropriate for 8 to 16 classroom school.



Elevation A-A



Elevation B-B

NOTES

CONSTRUCTION OF KITCHENETTE UNITS:

The use of melamine faced chipboard WILL NOT be permitted in any circumstances. Units to comply with BS 6222 and BS EN 1153 & Structural performance to BS 6222:Part 2, grade H. Surface finishes performance to BS 6222:Part 3 & Worktop classification to BS 6222:Part 3, Type 2. Doors: Formica Faced on 18mm FSC certified MDF, Formaldehyde levels to conform to Type Class E1 of product Standard EN622-1, with 18 x 18mm beech trim to edge & 170 x 35mm 'D' handles 10mm diameter by HAFELE Ref. 117.40.640 brushed stainless steel or equivalent. 12mm painted FSC certified MDF, Formaldehyde levels to conform to Type Class E1 of product Standard EN622-1, backing to rear of unit. 100mm plinth/ kicker board under units to accommodate services. Worktop: 40mm Formica faced FSC certified MDF Worktop, Formaldehyde levels to conform to Type Class E1 of product Standard EN622-1, 40 x 15mm varnished Beech edge trim to work top. Doors, drawers, side panels, plinths, shelves finish/colour as selected by the Architect in consultation with the Client. Sinks: 150mm deep stainless steel single bowl (insulated on underside) single drainer sink. Taps: polished chrome single swivel neck mixer type with quarter turn lever type taps or equivalent (refer to TGD 002)

ROOM GENERAL NOTES:

Entrance doorway with a minimum clear opening width of 850mm, door to incorporate 1450 x 190mm safety glazing strip.

Natural daylight shall be provided to the Teacher Room & the Multi-Purpose Room and where possible to the GP Room Servery.

Blinds to windows in both the Teacher's Room & the Multi-Purpose Room shall be manually operated heavy duty contract grade steel tube spring-less rollers with sidewinder endless ball chain control units appropriately sized for each opening with Luxaflex Gardian blind fabric (or equivalent) to selected colour. Materials used in the manufacture of the blinds should meet the designation of 'flameproof' when assessed in accordance with BS 3120: 1959. A test certificate as in appendix 'C' of "fire safety of furnishings and fittings in places of assembly" should be supplied for each item specified.

Ventilation where possible shall be natural ventilation by means of permanent wall vents and windows with opening sections. The ventilation area provided through permanent vents (whether in walls or windows) and opening sashes shall exceed the current guidelines set out in the Technical Guidance Documents to the Building Regulations. Where it is not possible to naturally ventilate the GP Room Servery it shall be mechanically ventilated.

ROOM FINISHES:

Flooring: sheet vinyl/linoleum/rubber with slip resistance of R9 to DIN: 51130. Walls: Durable, hard wearing, easy to clean paint, 100 x 100mm Architectural Tiles. Ceilings: Suspended ceiling to have a sound attenuation performance as set out in TGD021.5 Acoustic Performance in Schools. Tiling: 100 X 100mm Architectural plain tiles in selected colours, returned on end wall/ walls, fixed strictly in accordance with manufacturers written instructions with perimeter beads to edges. For further information on finishes refer to TGD-021 & TGD-022.

Mechanical and Electrical Services - to be read in conjunction with TGD 002, TGD 004 and TGD030.

BUILDING SERVICES ENGINEERING SYMBOLS	Plan	Elevation
Twin switched 13 A socket outlets		
Single switched 13 A socket outlets		
Water supply (hot & mains potable water)		
Thermostatic blending valve		
Wall Mounted Water Boiler - 5 litre 2.4kW		

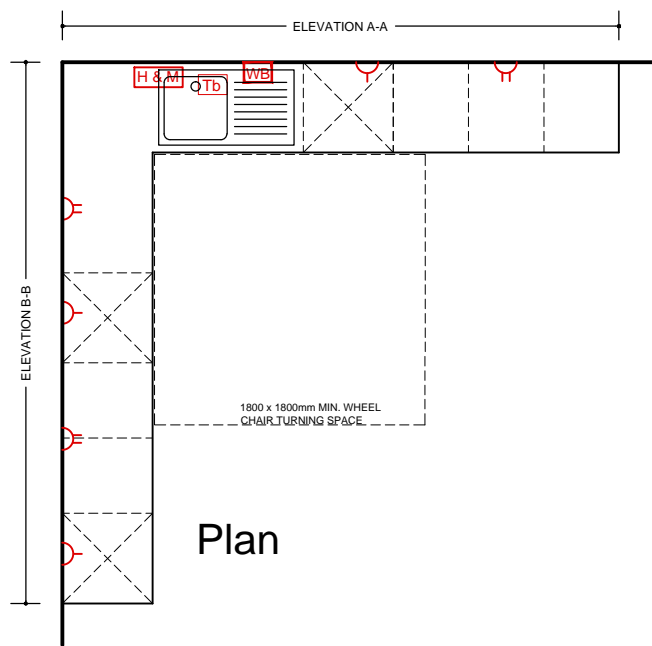
PRIMARY ROOM LAYOUTS		SCALE:	nts
TYPICAL BUILT-IN KITCHENETTE UNITS TO STAFF ROOMS		DRG No:	TGD 022 - D07
		DATE:	Nov '08
REVISION:	02	DATED:	January 2013
		APPROVED BY :	P+T
STAGE:	DOCUMENT ADDENDUM APPROVED		PREPARED BY:
			C.D

DEPARTMENT OF EDUCATION & SKILLS
An Roinn Oideachais agus Eolaíochta
PLANNING AND BUILDING UNIT

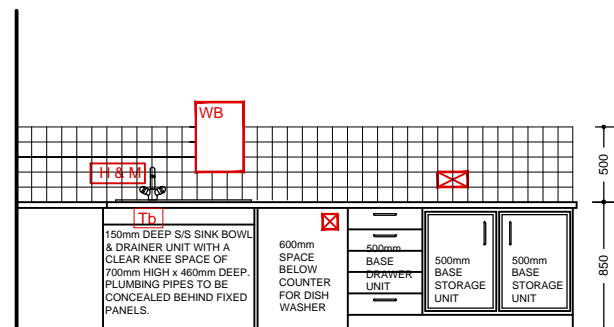


NOTES

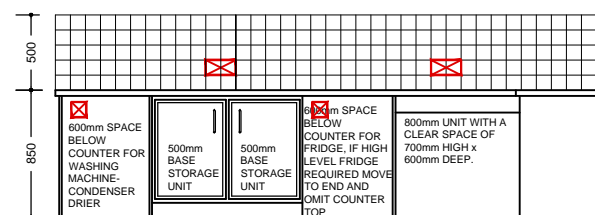
- This document is published by the Department of Education & Science and provides guidance in relation to the requirements for a Typical Primary School kitchenette units. The document should be read in conjunction with the Technical Guidance Documents for Primary School Buildings as published by the Department of Education & Skills. <http://www.education.ie/en/School-Design/Technical-Guidance-Documents/>
- Where works are carried out in accordance with the guidance in this document, this will, prima facie, indicate compliance with Technical Guidance Documents for Primary School Buildings as published by the Department of Education & Skills. However, the adoption of an approach other than that outlined in the guidance is not precluded provided that the relevant requirements of the Technical Guidance Documents are complied with.
- Please do not scale the drawing use figured dimensions.
- All dimensions given are in millimetres



Plan

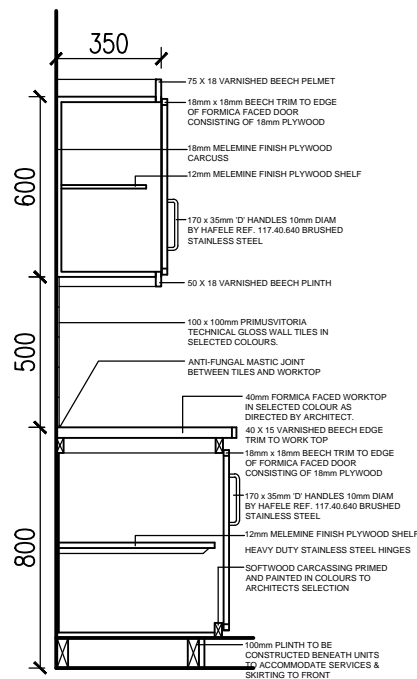


Elevation A-A

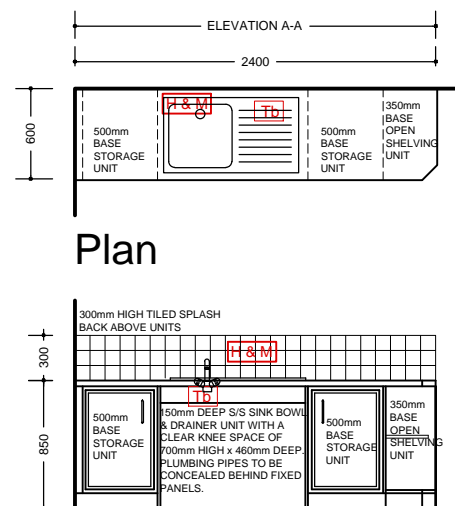


Elevation B-B

GP ROOM SERVERY - Typical Layout



TYPICAL SINK UNIT DETAILS



Plan

Elevation A-A MULTI-PURPOSE ROOM - Typical Layout

NOTES

CONSTRUCTION OF KITCHENETTE UNITS:

The use of melamine faced chipboard WILL NOT be permitted in any circumstances. Units to comply with BS 6222 and BS EN 1153 & Structural performance to BS 6222:Part 2, grade H. Surface finishes performance to BS 6222:Part 3 & Worktop classification to BS 6222:Part 3, Type 2.

Doors: Formica Faced on 18mm FSC certified MDF, Formaldehyde levels to conform to Type Class E1 of product Standard EN622-1, with 18 x 18mm beech trim to edge & 170 x 35mm 'D' handles 10mm diameter by HAFELE Ref. 117.40.640 brushed stainless steel or equivalent.

12mm painted FSC certified MDF, Formaldehyde levels to conform to Type Class E1 of product Standard EN622-1, backing to rear of unit.

100mm plinth/ kicker board under units to accommodate services

Worktop: 40mm Formica faced FSC certified MDF Worktop, Formaldehyde levels to conform to Type Class E1 of product Standard EN622-1, 40 x 15mm varnished Beech edge trim to work top

Doors, drawers, side panels, plinths, shelves finish/colour as selected by the Architect in consultation with the Client.

Sinks: 150mm deep stainless steel single bowl (insulated on underside) single drainer sink.

Taps: polished chrome single swivel neck mixer type with quarter turn lever type taps or equivalent (refer to TGD 002)

ROOM GENERAL NOTES:

Entrance doorway with a minimum clear opening width of 850mm, door to incorporate 1450 x 190mm safety glazing strip.

Natural daylight shall be provided to the Teacher Room & the Multi-Purpose Room and where possible to the GP Room Servery.

Blinds to windows in both the Teacher's Room & the Multi-Purpose Room shall be manually operated heavy duty contract grade steel tube spring-less rollers with sidewinder endless ball chain control units appropriately sized for each opening with Luxaflex Gardian blind fabric (or equivalent) to selected colour. Materials used in the manufacture of the blinds should meet the designation of 'flameproof' when assessed in accordance with BS 3120: 1959. A test certificate as in appendix 'C' of "fire safety of furnishings and fittings in places of assembly" should be supplied for each item specified.

Ventilation where possible shall be natural ventilation by means of permanent wall vents and windows with opening sections. The ventilation area provided through permanent vents (whether in walls or windows) and opening sashes shall exceed the current guidelines set out in the Technical Guidance Documents to the Building Regulations. Where it is not possible to naturally ventilate the GP Room Servery it shall be mechanically ventilated.

ROOM FINISHES:

Flooring: sheet vinyl/linoleum/rubber with slip resistance of R9 to DIN: 51130.

Walls: Durable, hard wearing, easy to clean paint, 100 x 100mm Architectural Tiles

Ceilings: Suspended ceiling to have a sound attenuation performance as set out in TGD021.5 Acoustic Performance in Schools.

Tiling: 100 X 100mm Architectural plain tiles in selected colours, returned on end wall/ walls, fixed strictly in accordance with manufacturers written instructions with perimeter beads to edges

For further information on finishes refer to TGD-021 & TGD-022.

Mechanical and Electrical Services - to be read in conjunction with TGD 002, TGD 004 and TGD030.

BUILDING SERVICES ENGINEERING SYMBOLS	Plan	Elevation
Twin switched 13 A socket outlets		
Single switched 13 A socket outlets		
Water supply (hot & mains potable water)		
Thermostatic blending valve		
Wall Mounted Water Boiler - 5 litre 2.4kW		

NOTES

- This document is published by the Department of Education & Science and provides guidance in relation to the requirements for a Typical Primary School kitchenette units. The document should be read in conjunction with the Technical Guidance Documents for Primary School Buildings as published by the Department of Education & Skills. <http://www.education.ie/en/School-Design/Technical-Guidance-Documents/>
- Where works are carried out in accordance with the guidance in this document, this will, prima facie, indicate compliance with Technical Guidance Documents for Primary School Buildings as published by the Department of Education & Skills. However, the adoption of an approach other than that outlined in the guidance is not precluded provided that the relevant requirements of the Technical Guidance Documents are complied with.
- Please do not scale the drawing use figured dimensions.
- All dimensions given are in millimetres

PRIMARY ROOM LAYOUTS	SCALE:	nts
TYPICAL BUILT-IN KITCHENETTE UNITS TO GP ROOM SERVERY & MULTI-PURPOSE ROOM	DRG No:	TGD 022 - D08
	DATE:	Nov '08
REVISION: 02	DATED: January 2013	APPROVED BY: P+T
STAGE: DOCUMENT ADDENDUM APPROVED		PREPARED BY: C.D

DEPARTMENT OF EDUCATION & SKILLS
An Roinn Oideachais agus Eolaíochta
PLANNING AND BUILDING UNIT

