

Circular 11/2015

16th April 2015

To: GLAS Advisors

Re: Adding Multiple Actions on the GLAS Map

A number of queries have arisen, whereby users are having difficulty mapping multiple or part parcel actions on maps.

In the mapping screen, the user should draw their first action. They should then click confirm when they have completed drawing that action. They can then proceed and draw the next action, clicking confirm after each one.

For example, a bee box is drawn by placing a dot in the appropriate place on the map. The attribute box appears on the right hand side and an action value should be entered, e.g. 2, then click confirm. Additional boxes may then be added in other places on the parcel if required.

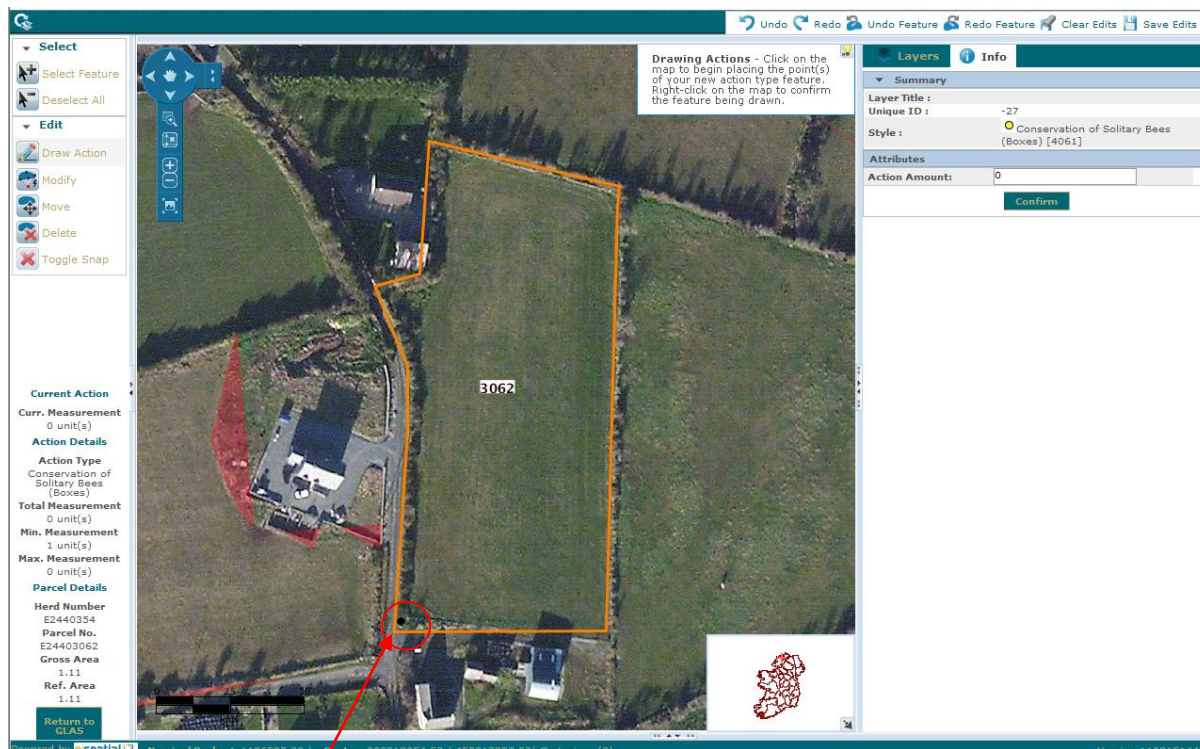
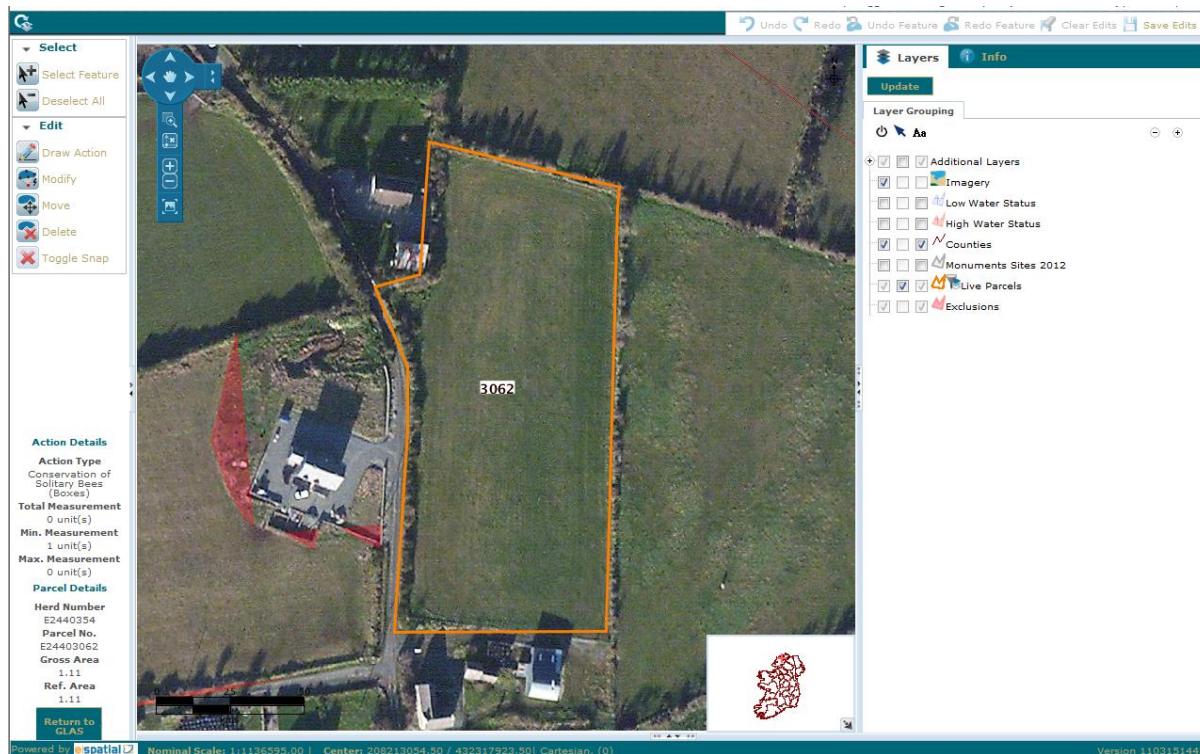
Again, for part parcel actions, the first action should be drawn, click confirm, then the second action is drawn and so forth.

Examples are shown on the following pages.

The most recent versions of the Specification may be found at this link <http://www.agriculture.gov.ie/farmerschemespayments/glas/> and should be consulted for minimum and maximum units allowed for actions.

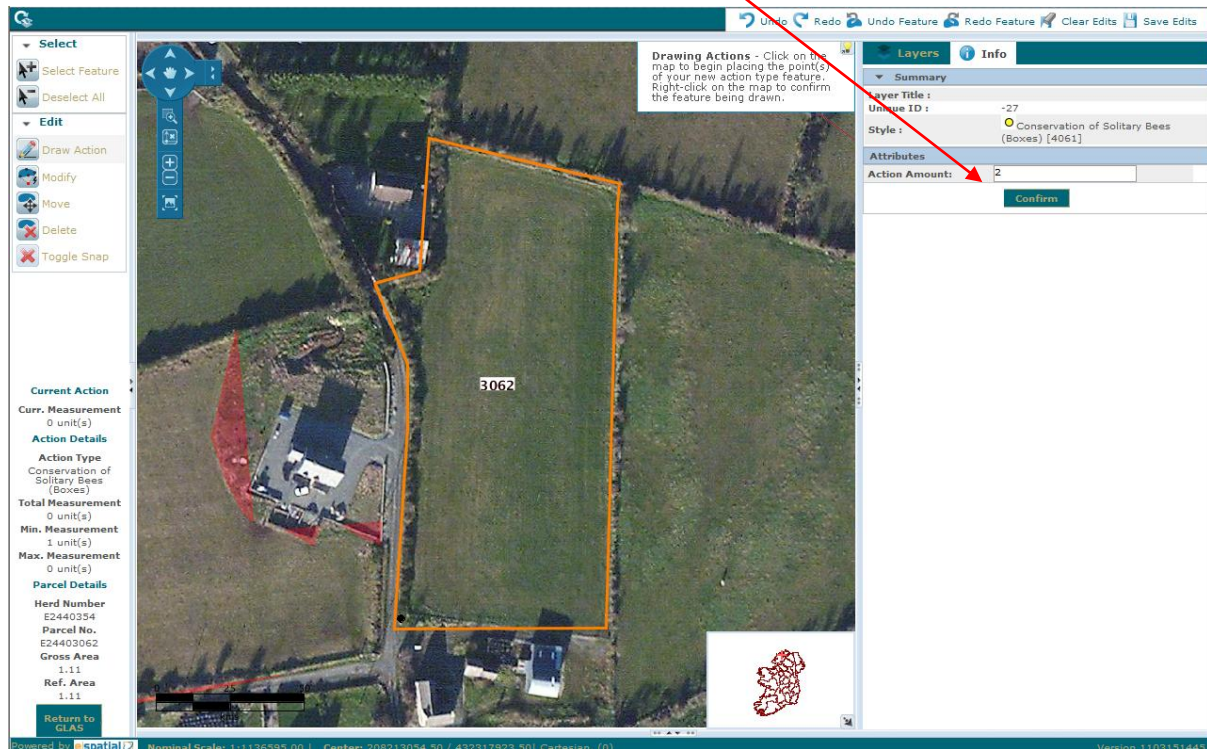
*GLAS
Agriculture Structures & Market Supports Division
Dept. Agriculture, Food & the Marine
Johnstown Castle Estate
Wexford
Tel: 0761 064451
glas@agriculture.gov.ie*

Conservation of Solitary Bees (Boxes)

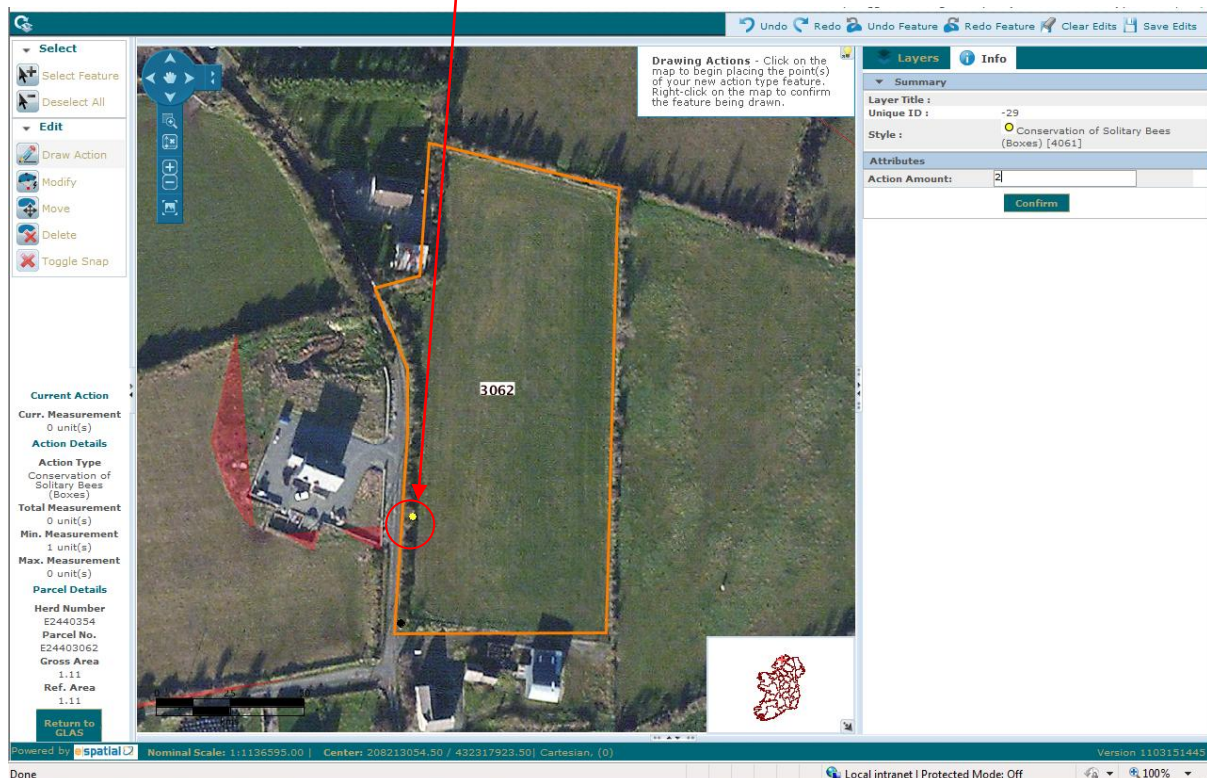


First bee box is mapped with a black dot.

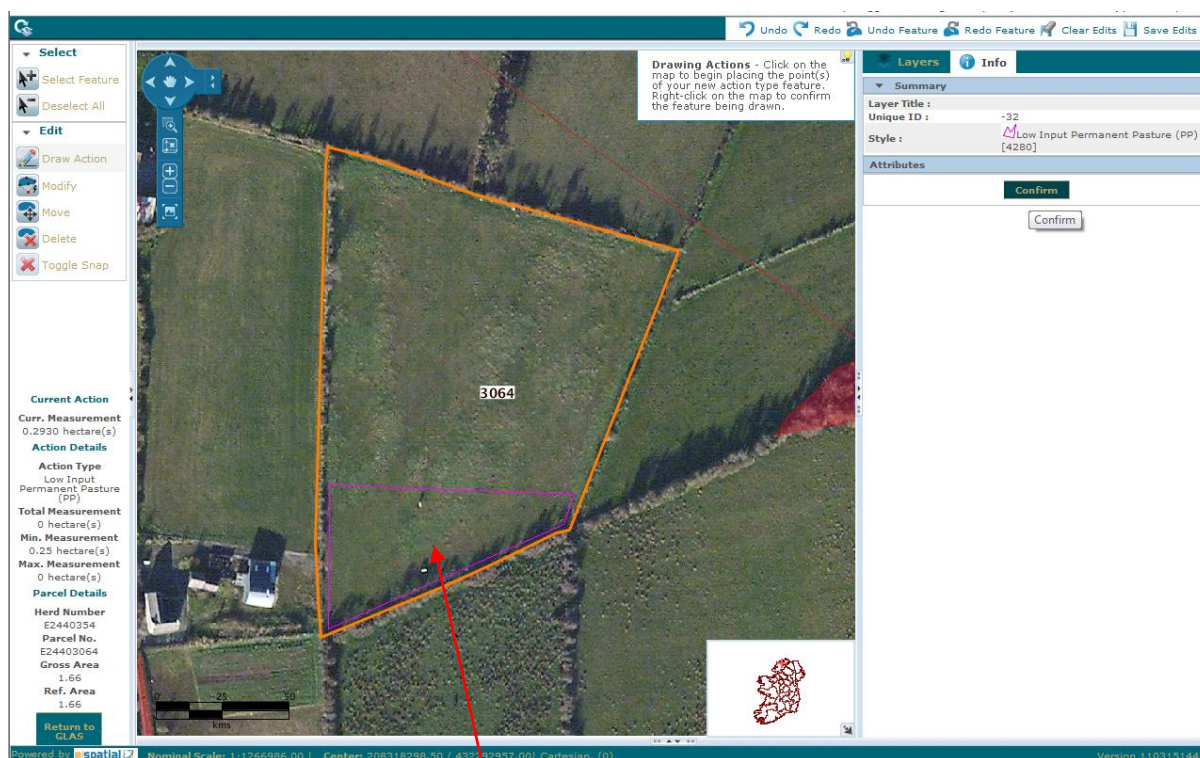
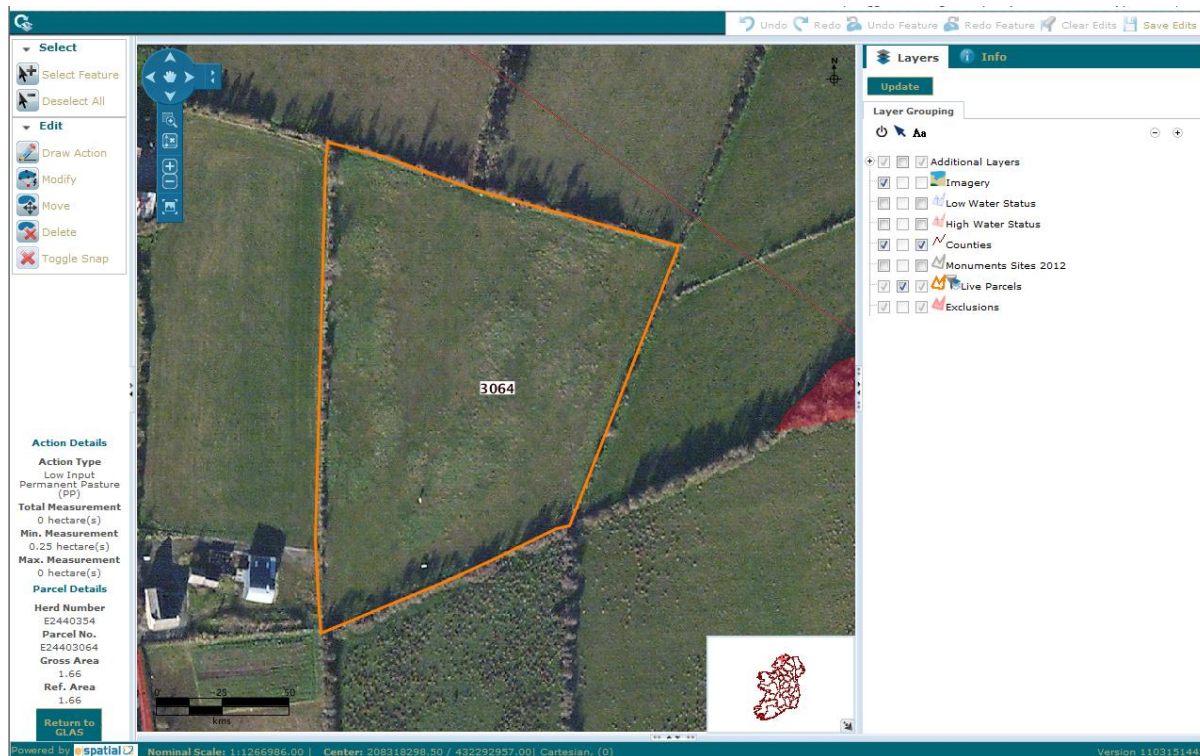
The "Action Amount" box is completed and click confirm.



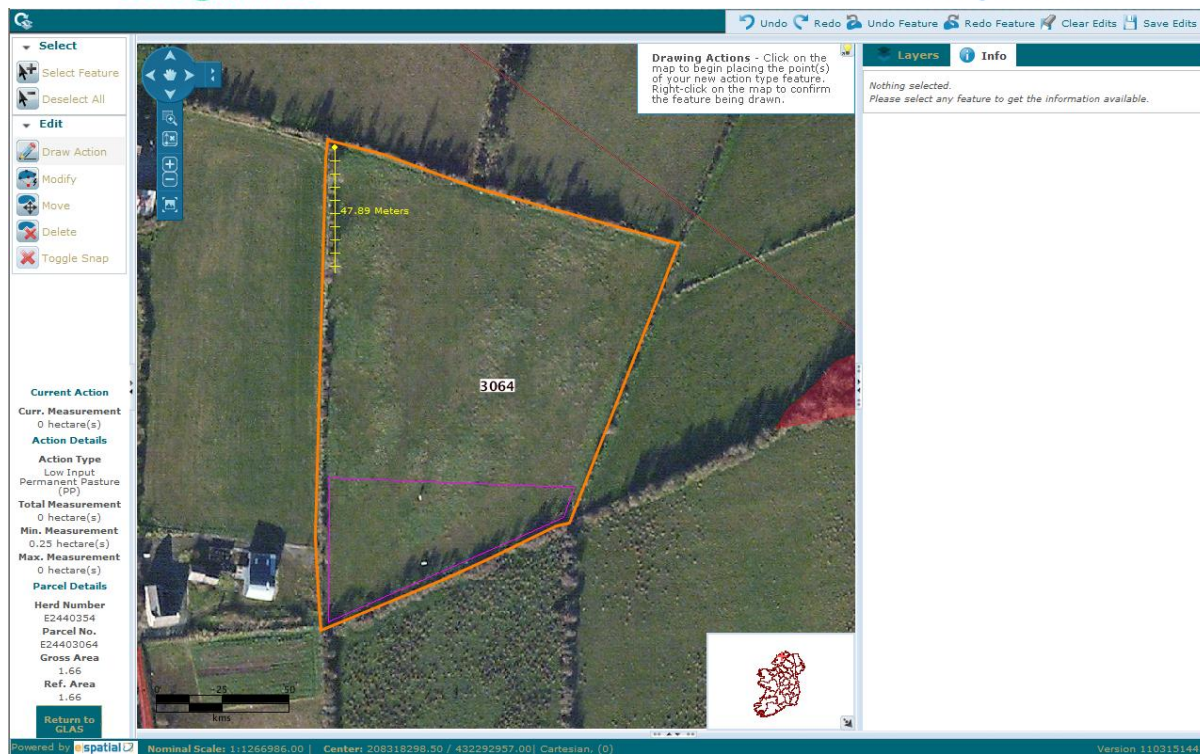
The second bee box action is mapped with a yellow dot, the action amount completed and confirmed. Save edits to save all drawn actions.



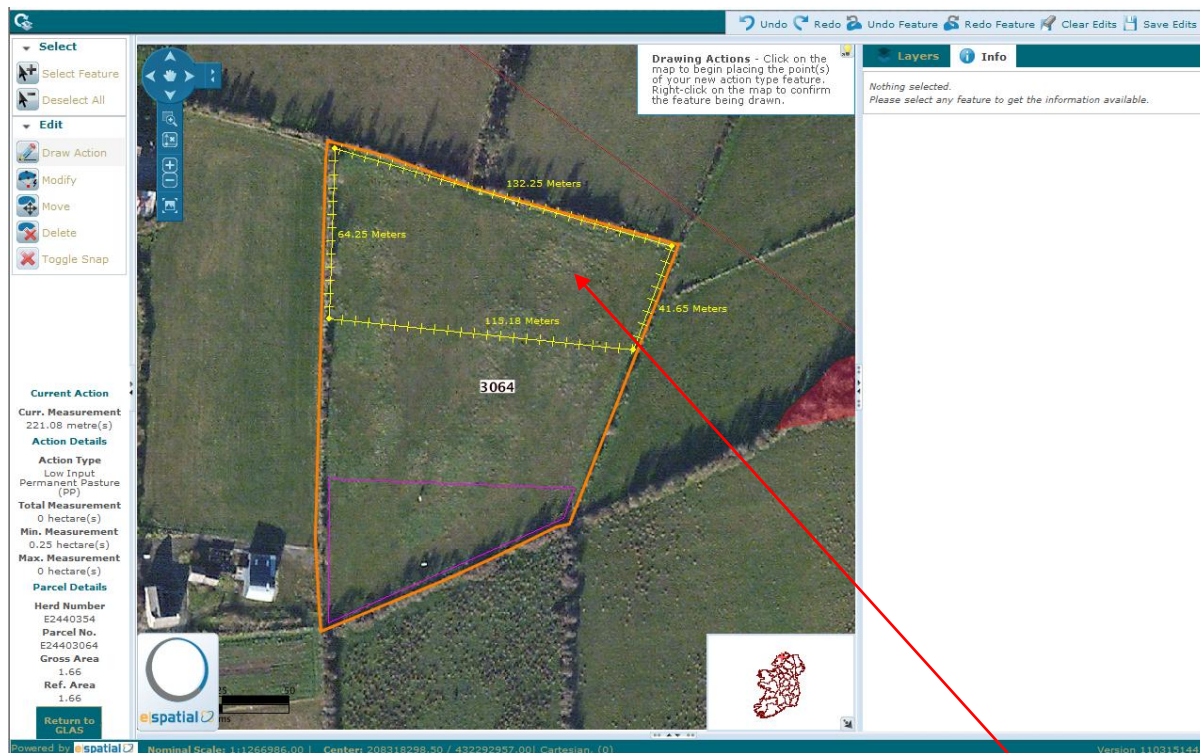
Part Parcel Actions – Low-input Permanent Pasture



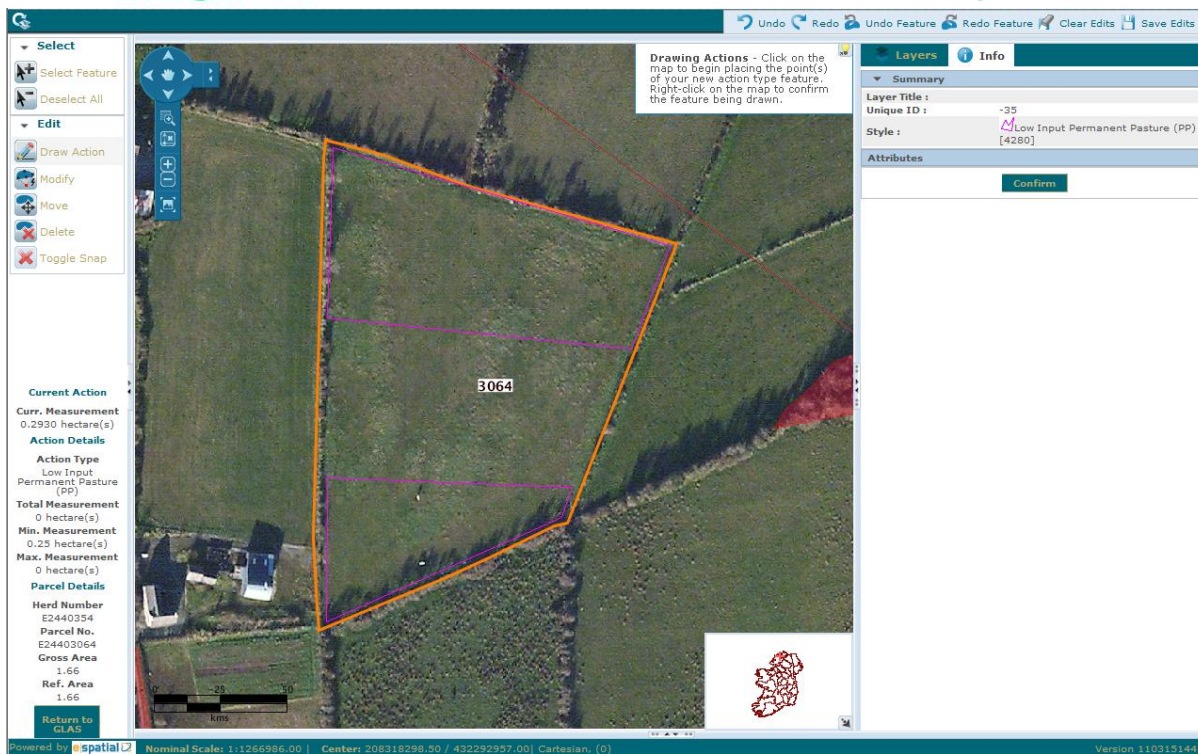
The first action is drawn shown in purple, click confirm.



The above shows the length of the action as it is being drawn.



The second action is drawn, shown above in yellow, with the boundary measurements.



Current Action

Curr. Measurement
0.2930 hectare(s)

Action Details

Action Type
Low Input Permanent Pasture (PP)

Total Measurement
0 hectare(s)

Min. Measurement
0.25 hectare(s)

Max. Measurement
0 hectare(s)

Parcel Details

Herd Number
E2440354

Parcel No.
E24403064

Gross Area
1.66

Ref. Area
1.66

[Return to GLAS](#)


Summary

Layer Title :

Unique ID : -35

Style : Low Input Permanent Pasture (PP) [4280]

[Confirm](#)

Powered by  **Nominal Scale:** 1:1266986.00 | **Center:** 208318298.50 / 432292957.00 | **Cartesian:** (0) **Version** 1103151445

The above shows the two LIPP part parcel actions drawn and confirmed. Save edits to save all drawn actions.