

Meat Market Report

27/07/20 - 02/08/20

Week
31



**An Roinn Talmhaíochta,
Bia agus Mara**
Department of Agriculture,
Food and the Marine

MEAT & MILK POLICY, DEPARTMENT OF AGRICULTURE, FOOD AND THE MARINE
Please send queries to Beefpolicy@agriculture.gov.ie

MARKET SUMMARY

Beef

Deadweight Prices c/100Kg (Including VAT)

	U3	U4	R3	R4	O3	O4	P+3
Steers	407.0	406.0	395.0	395.0	377.0	380.0	349.0
Heifers	412.0	409.0	398.0	399.0	384.0	381.0	347.0
Young Bulls	393.0	395.0	378.0	368.0	359.0	360.0	342.0
Cows			334.0	332.0	314.0	313.0	305.0

Liveweight Prices

*Bull Calf Average Price	€184.6 per head (Excluding VAT)
**Young Store Average Price	€226.0 per 100kg (Excluding VAT)
***Yearling (male & female) Price	€196.5 per 100kg (Excluding VAT)

* Aged 8-28 days ** Aged 180-364 days, Male & Female ***age 365-730 days

Slaughterings

35,245 cattle slaughtered this week, of which steers were 16,500 (47%), heifers 9,346 (27%), young bulls 1,577 (5%) and cows 7,019 (20%). Total YTD slaughter is 1,024,046 compared to 1,059,727 in 2019, a 3.7% decrease.

Live Trade

3,546 cattle were exported in the week commencing 20/7/2020, 1,918 to EU (Except NI). Live exports for 2020 amount to 195,136 compared to 235,151 in 2019.

*This data is provisional and subject to revision.

CONTENTS:

Page 2: Market Summary Beef
 Page 3: Market Summary Other Meats
 Page 4: Beef Price and Slaughter Summary
 Page 5: Comparative Beef Prices
 Page 6: Steer and Young Bull Price
 Page 7: Heifer and Cow Graphs
 Page 8: Price and Slaughter Graphs
 Page 9: Beef Export Maps

Page 10: Beef Export Info
 Page 11: Pig Price and slaughter graph
 Page 12: Sheepmeat Prices and Slaughter
 Page 13: Sheepmeat price and slaughter graphs
 Page 14 : Sheep Imports 6 months
 Page 15 : YTD Sheep Imports 2019 V 2020

MARKET SUMMARY

Pigmeat

Grade E Pig
Prices (Ex.
VAT)

Grade E Pig price Week Commencing 27/7/2020 was €162.80 per 100Kg Compared to €170.79 the same week last year, which represents a 4.7% decrease.

Slaughtering

66,607 pigs were slaughtered in Week 31 of which 1,905 were sows. The Cumulative figure for pig slaughterings in 2020 is 2,038,173.

Sheepmeat

Sheepmeat
Prices (Ex.
VAT)

The National average price Week commencing 27/7/2020 was €508.78 per 100Kg, an increase of 22.6% on the same week last year.

Slaughtering

77,304 sheep were slaughtered at Sheep export premises Week commencing 27/7/2020 compared to 52,802 in the same week 2019. Sheep slaughterings for 2020 are 8% up on 2019 at 1,661,238 head.

Live Trade

Total live exports stood at 1,835 head to the end of June 2020.

Poultry

Slaughtering

Cumulative Poultry slaughterings for 2020* stand at 62,887,376 birds as at the end of Week 30, up 3.3% compared to the same period last year.

*Latest Figures are provisional and subject to change

Dead Weight Prices	W/C	W/C	Same week 2019	% change prev week	% change 2019
	27/07/20	20/07/20	29/07/19		
Steers (R3) (c/kg)	374.4	373.5	345.4	0.2%	8.4%
Heifers (R3) (c/kg)	377.9	376.4	356.5	0.4%	6.0%
Young Bulls (U3) (c/kg)	372.7	369.1	351.9	1.0%	5.9%
Cows (04) (c/kg)	296.8	295.4	281.1	0.5%	5.6%

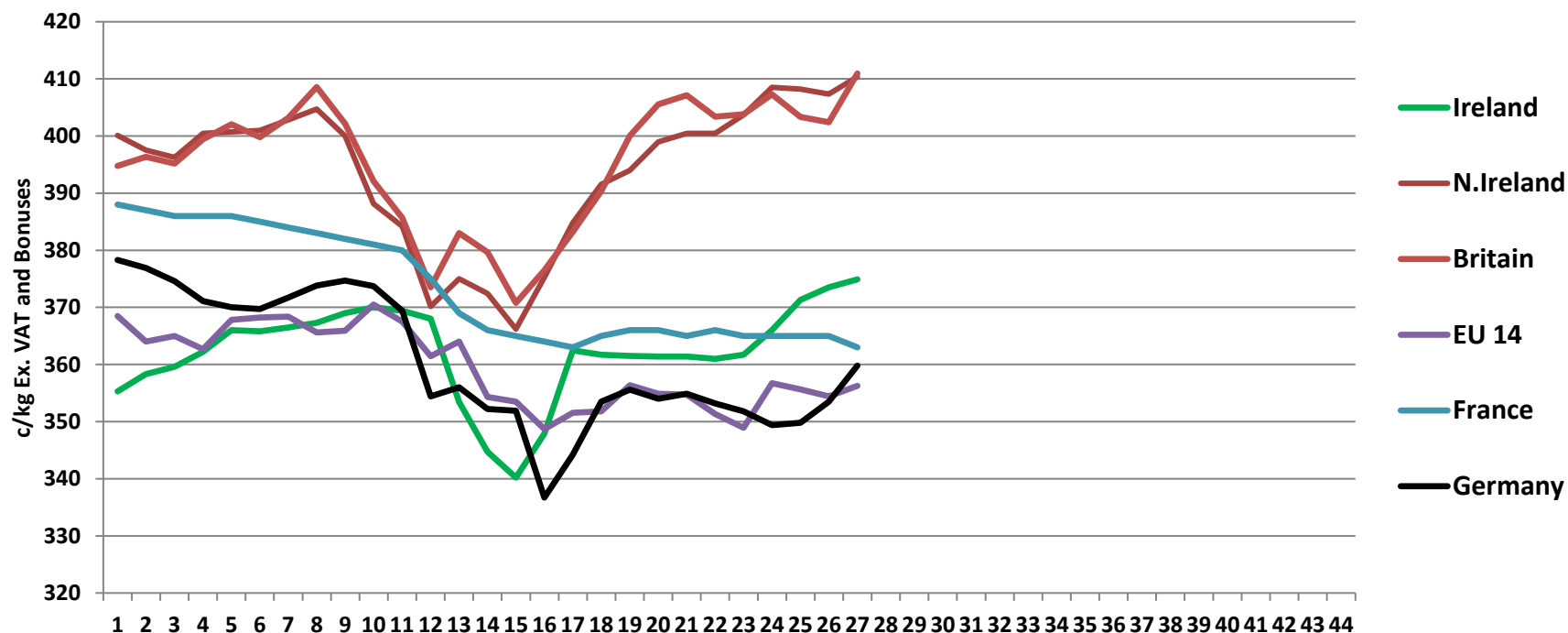
Live Weight Prices	W/C	W/C	Same week 2019	% change previous week	% change 2019
	27/07/20	20/07/20	29/07/19		
Yearlings (Male) (Aged 365 - 730 days) - (€/100Kg)	193	193	174	0.0%	10.9%
Yearlings (Female) (Aged 365 - 730 days) - (€/100Kg)	200	199	184	0.5%	8.7%
Young Stores (Male & Female) (Aged 180 - 364 days) - (€/100Kg)	226	215	199	5.1%	13.6%
Bull Calf (€/head) Dairy	150.4	130.5	140.3	15.3%	7.2%
Bull Calf (€/head) Beef	218.8	237.3	201.5	-7.8%	8.6%

Slaughter Figures	% of weekly figures	W/C 27-Jul-20	Same week 2019	Year to Date		Change 2020 v 2019	
				2020	2019	Head	%
Steers	46.8%	16,500	11,738	378,520	348,798	29,722	8.5%
Cows	19.9%	7,019	5,608	211,860	222,315	-10,455	-4.7%
Heifers	26.5%	9,346	7,849	310,175	313,904	-3,729	-1.2%
Young Bulls	4.5%	1,577	3,253	98,965	150,609	-51,644	-34.3%
Mature Bulls	2.3%	803	646	20,526	24,101	-3,575	-14.8%
Total	100%	35,245	29,094	1,020,046	1,059,727	-39,681	-3.7%

821

Live Exports	W/C 20-Jul-20	Same week 2019	W/C 13-Jul-20	Year to Date		Change 2019 v 2018	
				2020	2019	Head	%
Northern Ireland	1,628	496	1,473	33,378	19,004	14,374	76%
EU Except NI	1,918	1,783	1,817	149,871	208,248	-58,377	-28%
Third Countries	0	0	0	11,887	7,899	3,988	—
Total	3,546	2,279	3,290	195,136	235,151	-40,015	-17%
Calves YTD:		137,720		Adult YTD:Cattle		54,506	

Irish Deadweight Cattle Prices vs Selected Other Markets, 2020

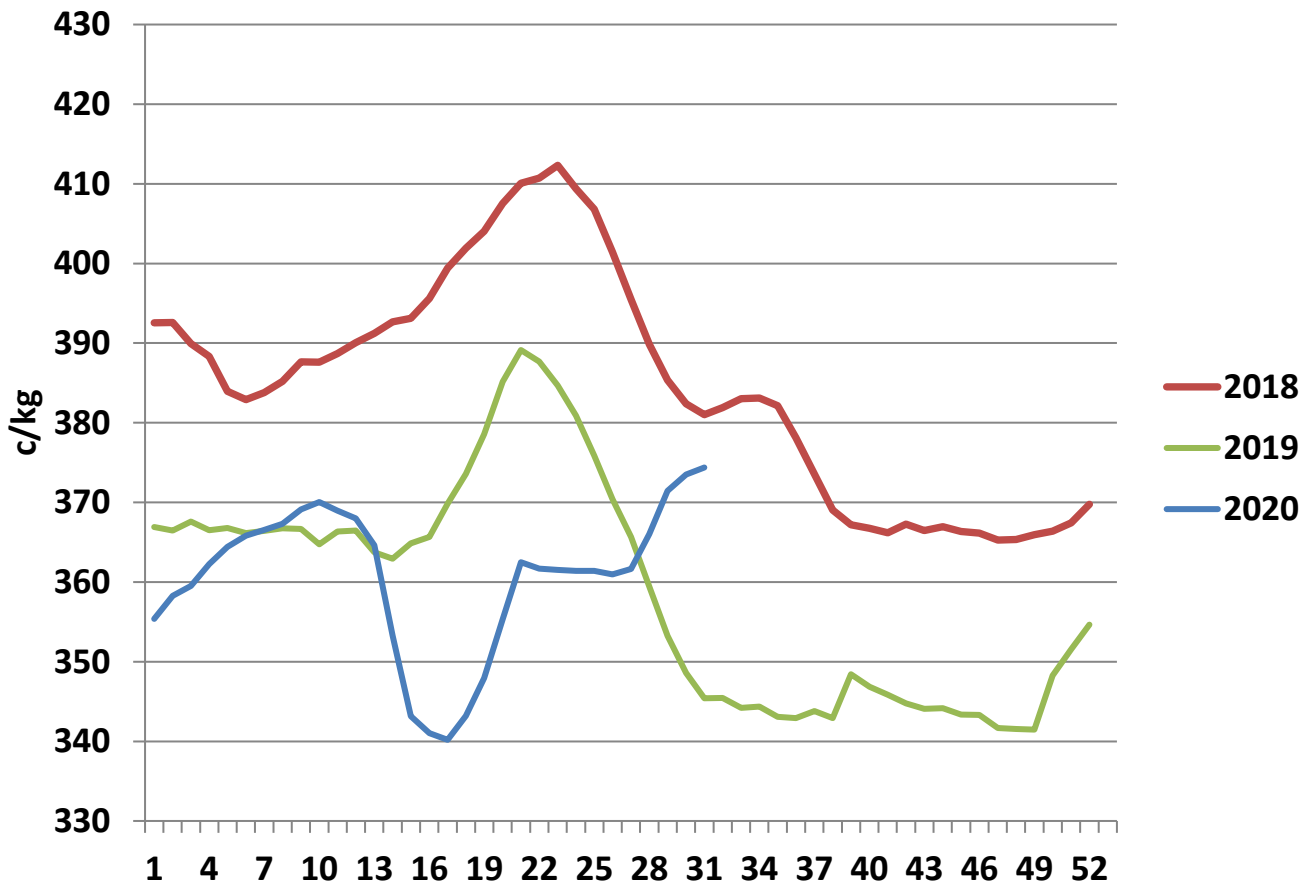


Week 31

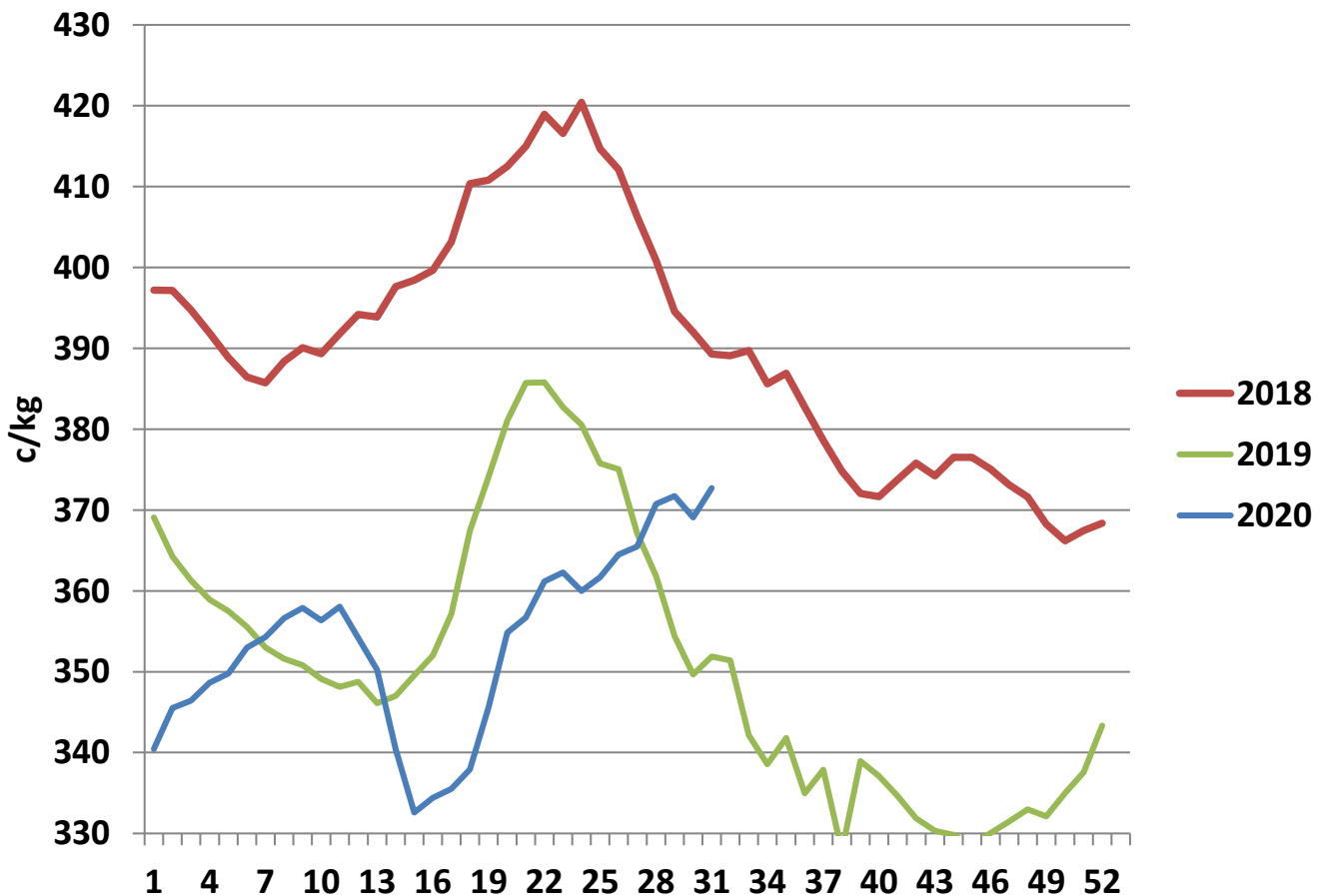
Livestock Pricing

	Ireland	NI	Britain	EU 14 Average	France	Germany
27/07/2020	375	410	411	356	363	360

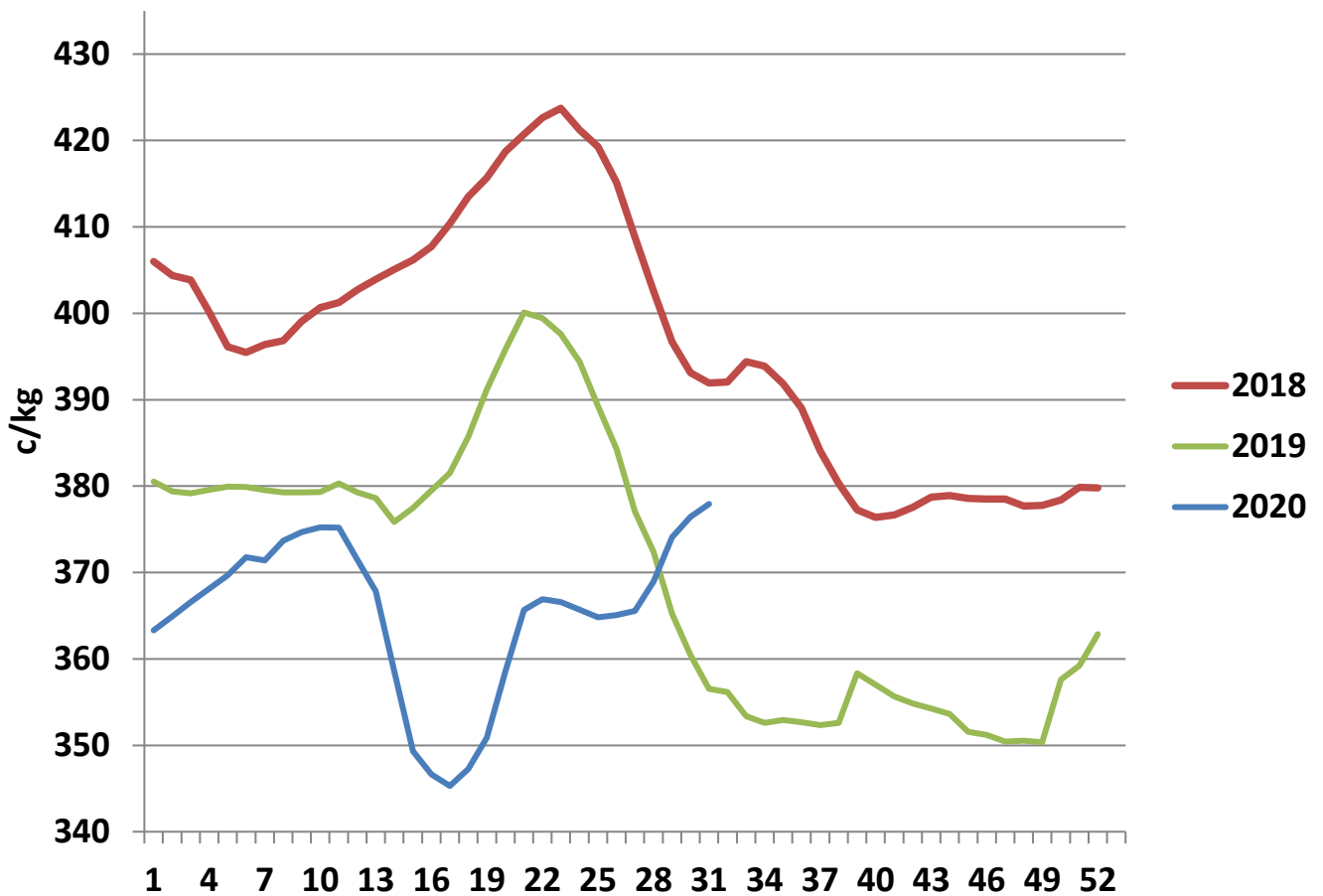
R3 Steer prices ex. VAT



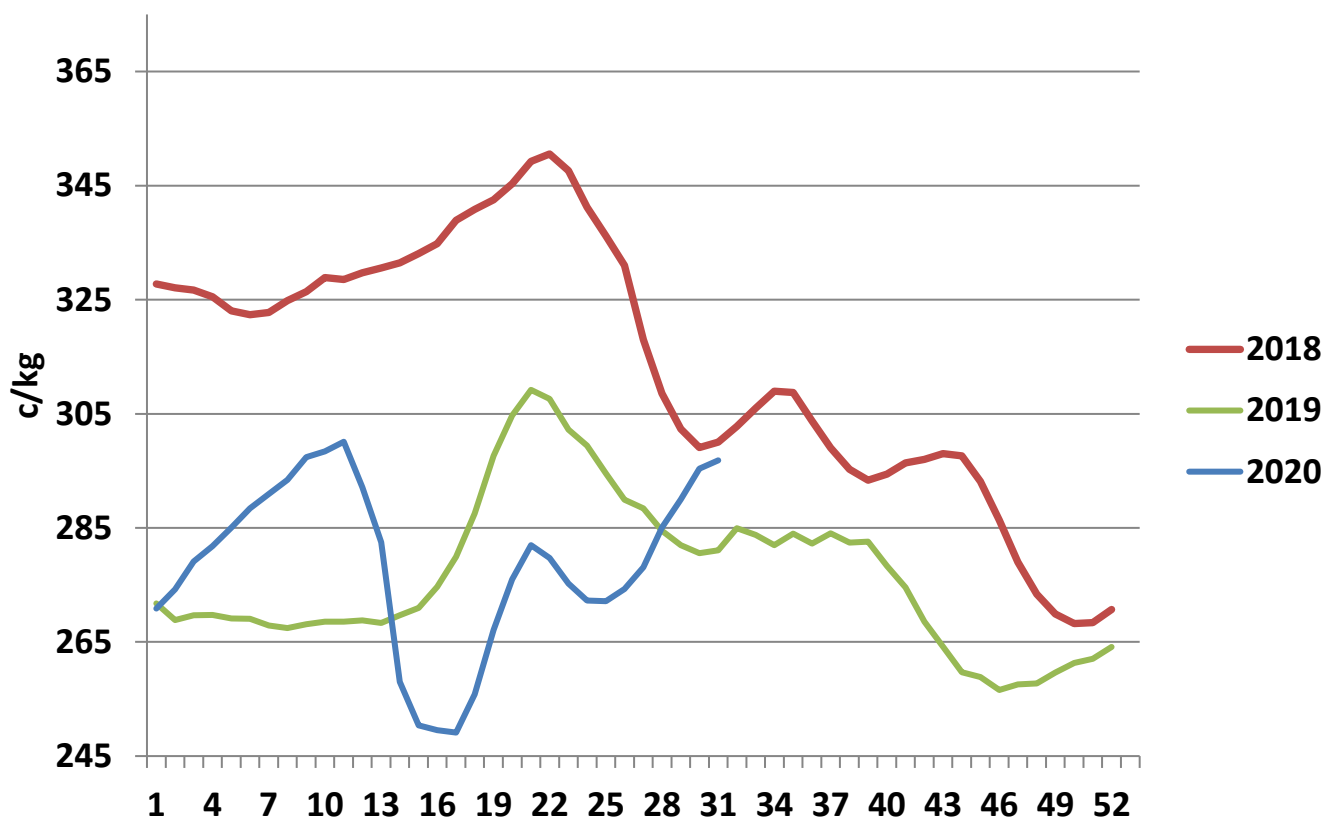
U3 Young Bull prices ex. VAT

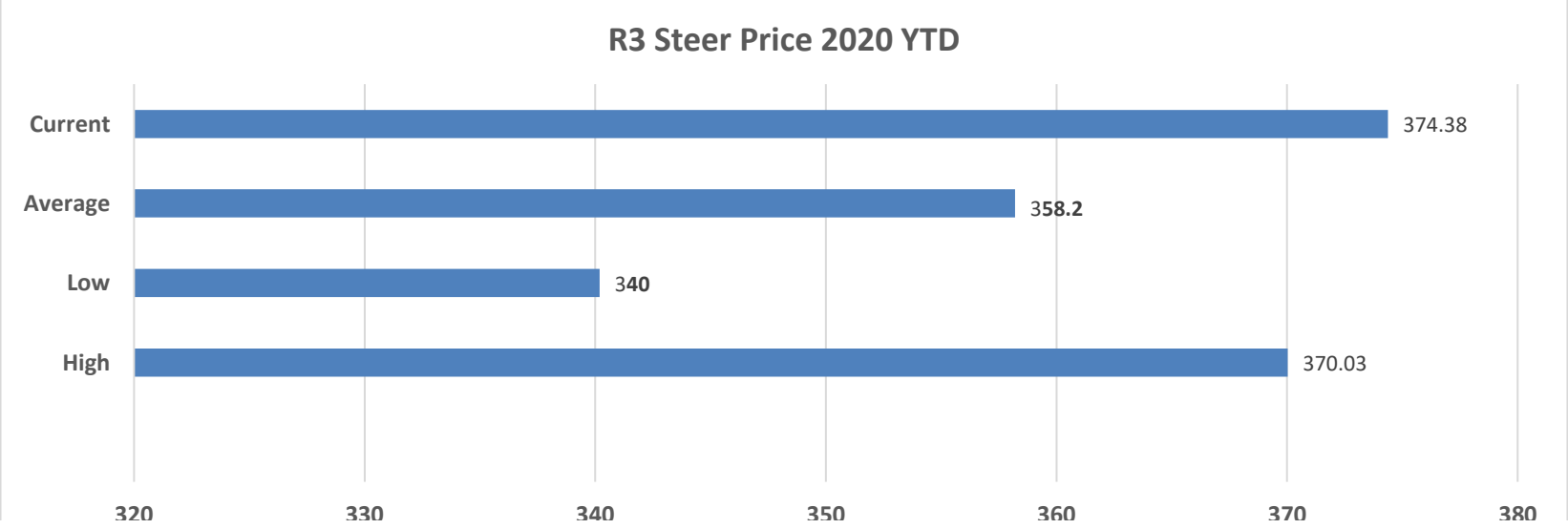
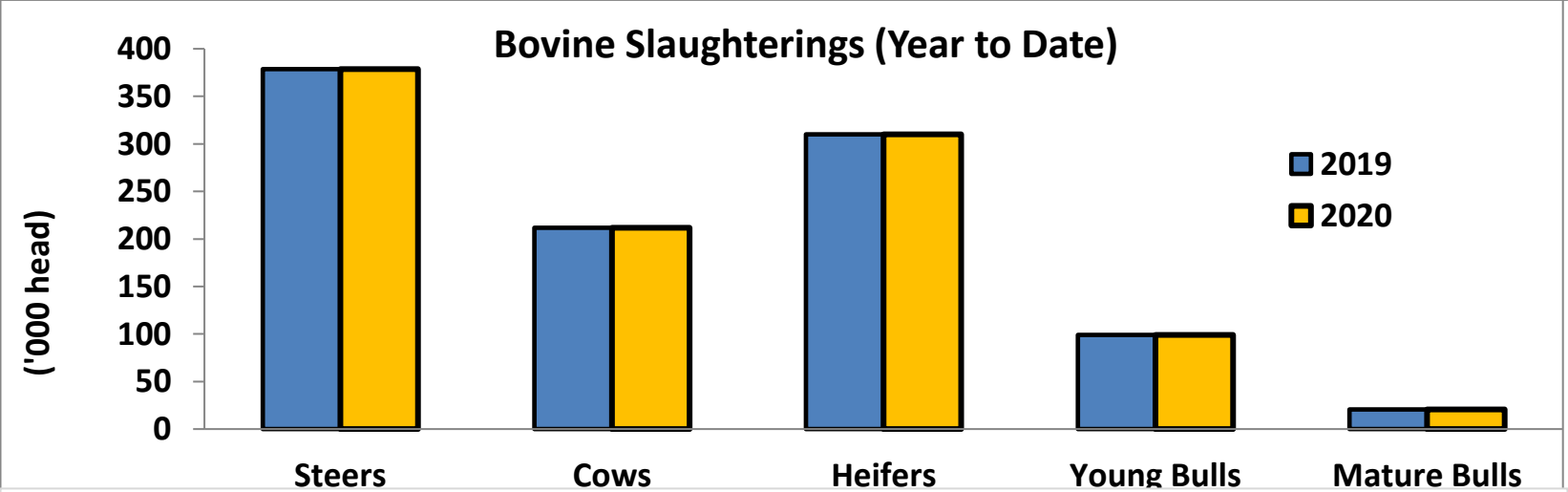
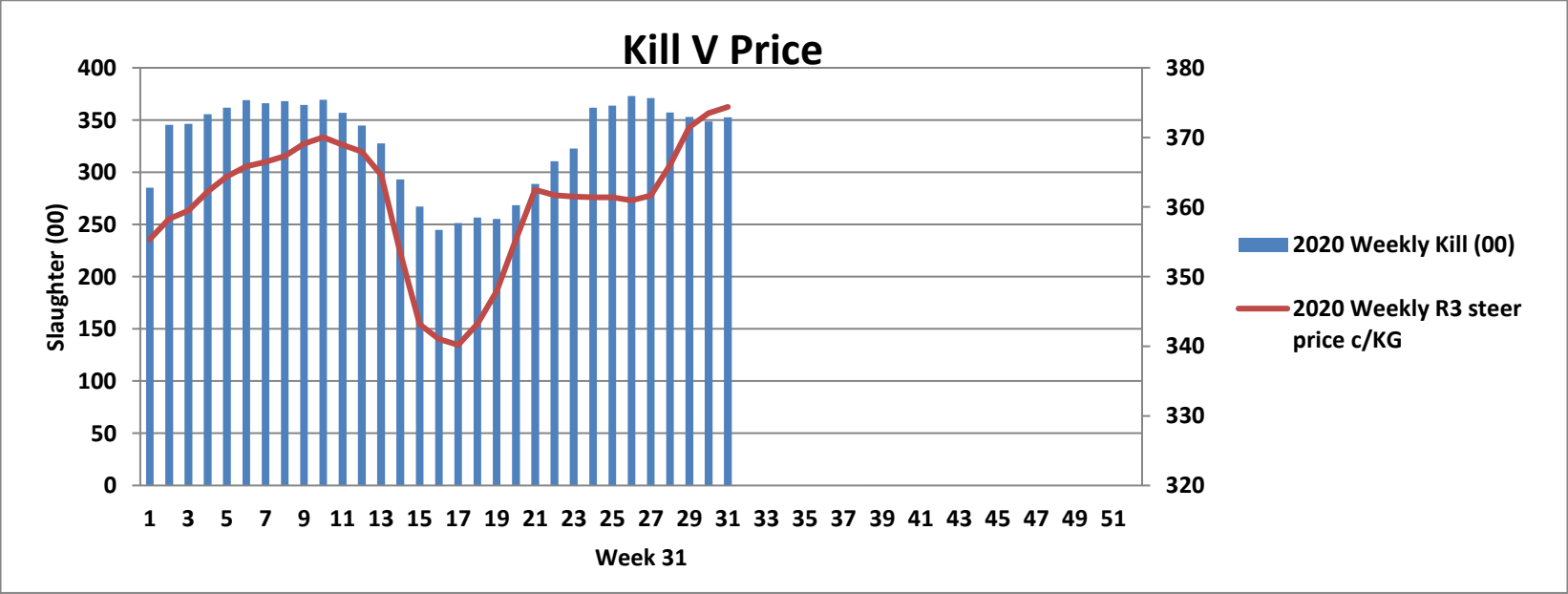


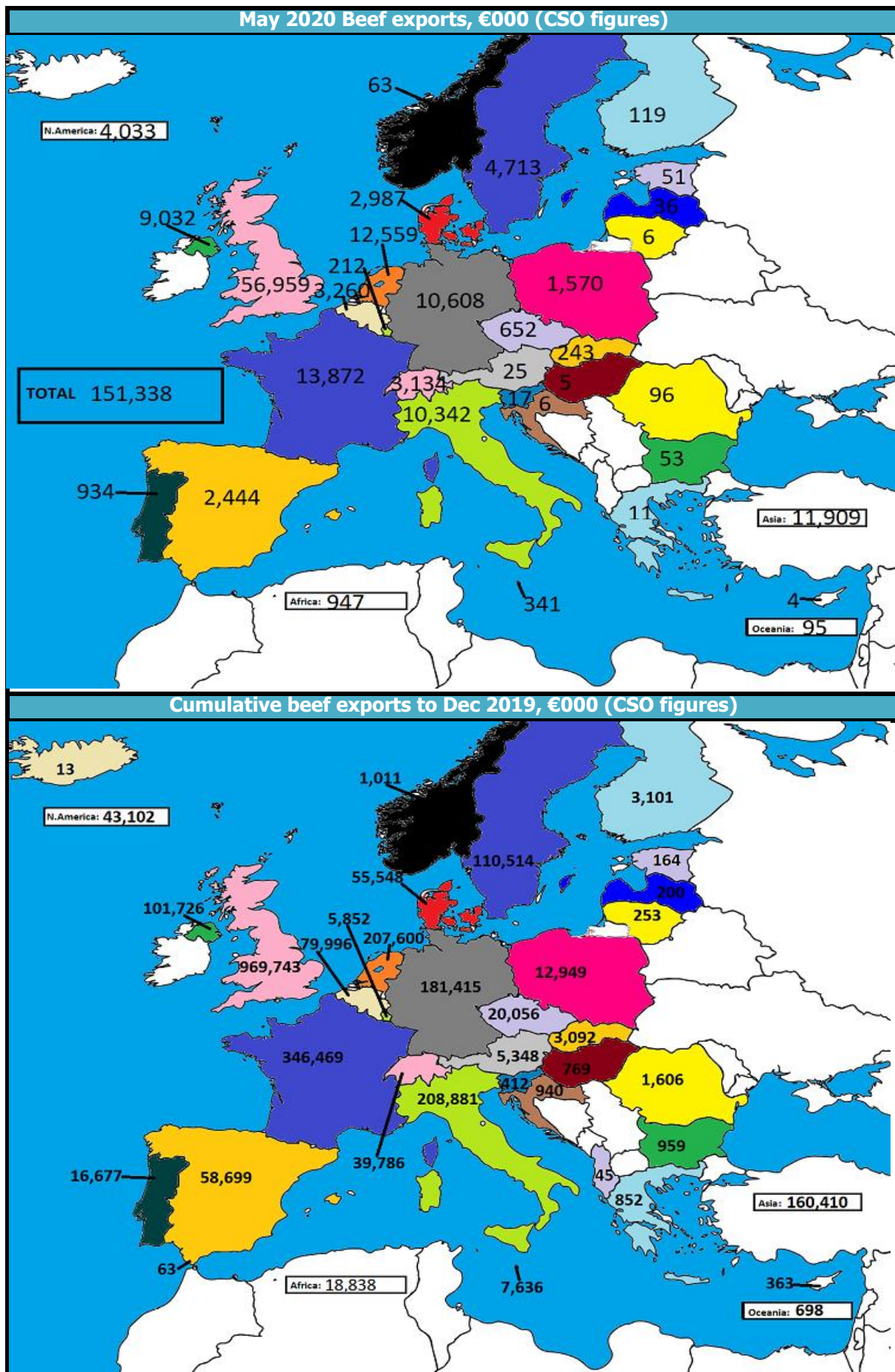
R3 Heifer prices ex. VAT

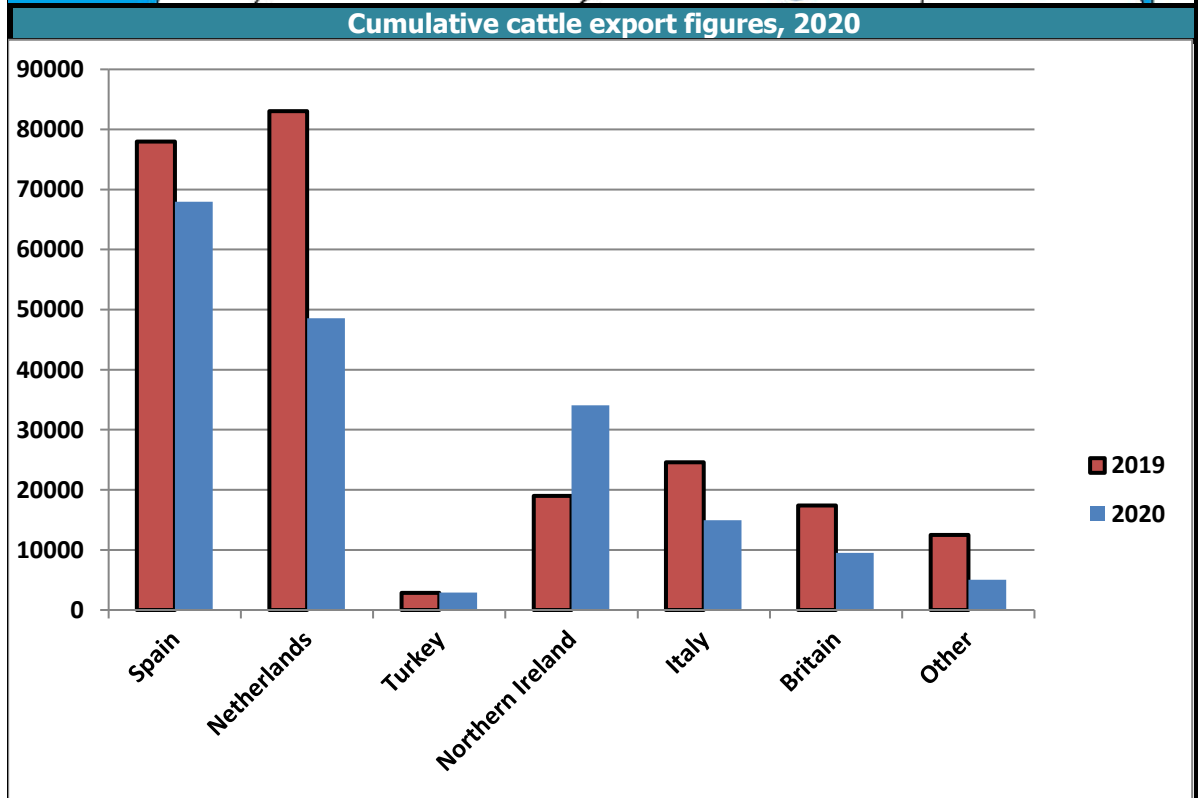
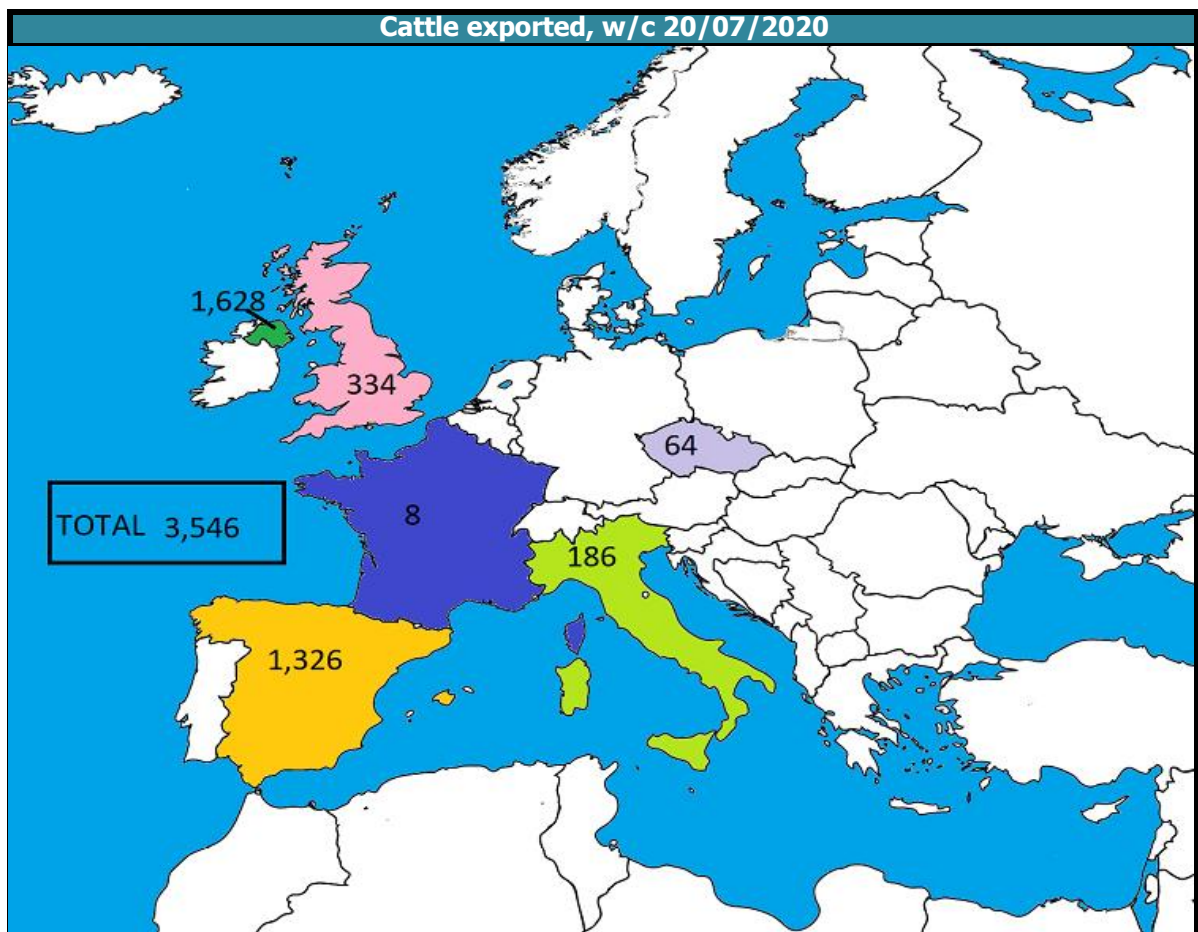


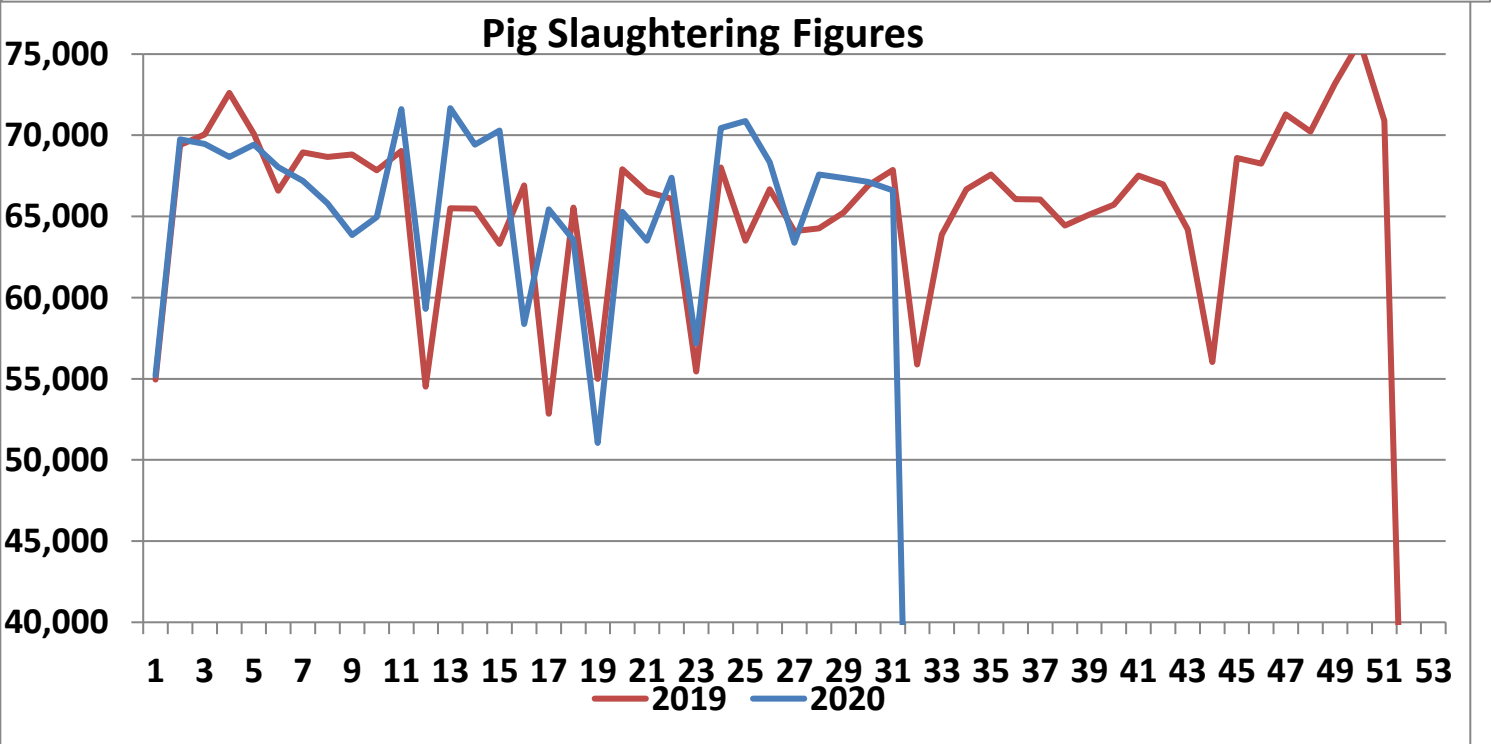
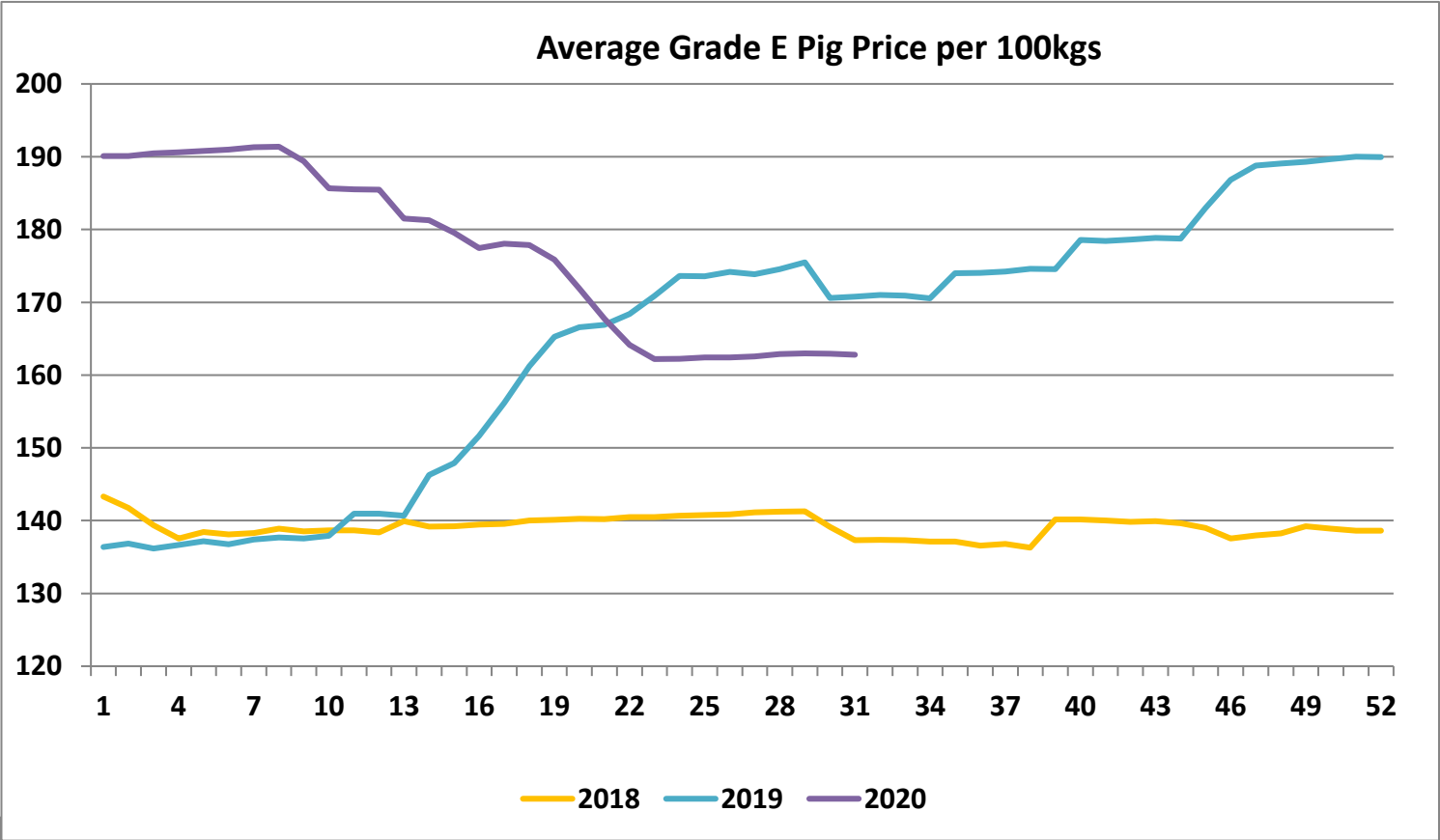
O4 Cow prices ex. VAT



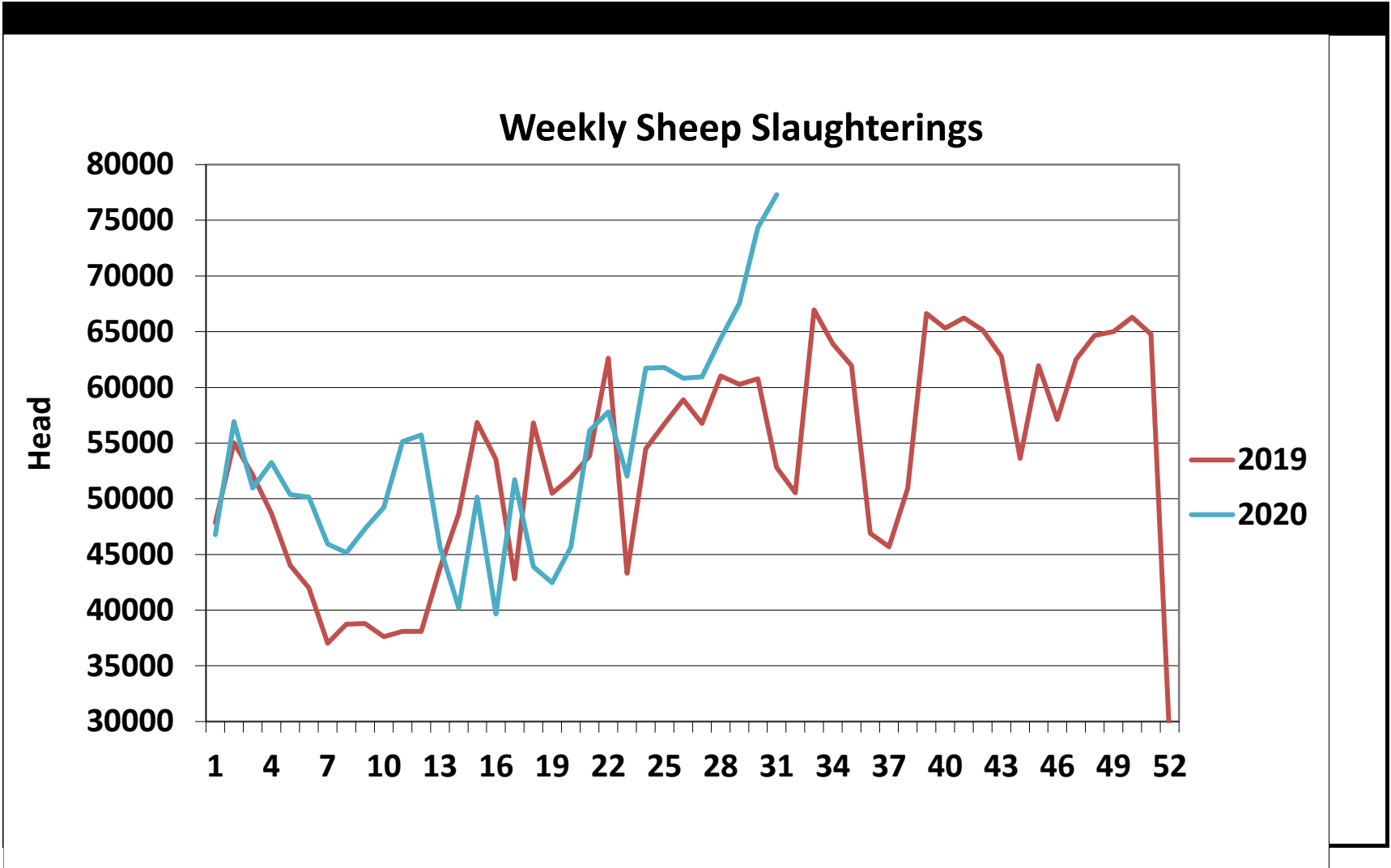








Sheepmeat Information Week 31 (w/c 27th July)																																																																																			
<div>Irish Prices €/100 kg</div> <table><tr><th>2020</th><th>2019</th><th>Change</th></tr><tr><td>Ave Factory Price</td><td>508.70</td><td>429.83</td><td>18.3</td></tr><tr><td>Ave Mart Price</td><td>437.39</td><td>380.89</td><td>14.8</td></tr><tr><td>National Ave Price</td><td>508.78</td><td>415.15</td><td>22.6</td></tr><tr><td>YTD Ave</td><td>528.07</td><td>483.86</td><td>9.1</td></tr></table> <div></div> <table><tr><th>Slaughterings</th><th>2020</th><th>2019</th><th>Change</th></tr><tr><td>Weekly</td><td>77,304</td><td>52,802</td><td>46.4</td></tr><tr><td>YTD</td><td>1,661,238</td><td>1,544,423</td><td>7.6</td></tr></table> <div></div>				2020	2019	Change	Ave Factory Price	508.70	429.83	18.3	Ave Mart Price	437.39	380.89	14.8	National Ave Price	508.78	415.15	22.6	YTD Ave	528.07	483.86	9.1	Slaughterings	2020	2019	Change	Weekly	77,304	52,802	46.4	YTD	1,661,238	1,544,423	7.6	<div>NOTE: EU PRICES ARE PROVISIONAL AT THE TIME OF PUBLICATION AND MAY NOT BE RELFECTIVE OF THE CURRENT PERIOD</div> <table><tr><th>Heavy Lambs</th><th>€/100kg</th></tr><tr><td>Belgium</td><td>538.6</td></tr><tr><td>Denmark</td><td>512.7</td></tr><tr><td>Germany</td><td>606.0</td></tr><tr><td>Spain</td><td>600.3</td></tr><tr><td>France</td><td>671.0</td></tr><tr><td>Croatia</td><td>577.9</td></tr><tr><td>Ireland</td><td>508.8</td></tr><tr><td>Italy</td><td>509.0</td></tr><tr><td>Cyprus</td><td>578.0</td></tr><tr><td>Latvia</td><td>439.8</td></tr><tr><td>Lithuania</td><td>385.7</td></tr><tr><td>Netherlands</td><td>585.9</td></tr><tr><td>Austria</td><td>542.0</td></tr><tr><td>Poland</td><td>435.4</td></tr><tr><td>Romania</td><td>485.6</td></tr><tr><td>Finland</td><td>383.3</td></tr><tr><td>Sweden</td><td>543.2</td></tr><tr><td>Community</td><td>592.6</td></tr><tr><td>Northern Ireland</td><td>479.7</td></tr><tr><td>Great Britain</td><td>526.2</td></tr><tr><td>United Kingdom</td><td>522.9</td></tr><tr><td>Community +UK</td><td>557.1</td></tr></table> <div></div>			Heavy Lambs	€/100kg	Belgium	538.6	Denmark	512.7	Germany	606.0	Spain	600.3	France	671.0	Croatia	577.9	Ireland	508.8	Italy	509.0	Cyprus	578.0	Latvia	439.8	Lithuania	385.7	Netherlands	585.9	Austria	542.0	Poland	435.4	Romania	485.6	Finland	383.3	Sweden	543.2	Community	592.6	Northern Ireland	479.7	Great Britain	526.2	United Kingdom	522.9	Community +UK	557.1
				2020	2019	Change																																																																													
				Ave Factory Price	508.70	429.83	18.3																																																																												
				Ave Mart Price	437.39	380.89	14.8																																																																												
				National Ave Price	508.78	415.15	22.6																																																																												
				YTD Ave	528.07	483.86	9.1																																																																												
				Slaughterings	2020	2019	Change																																																																												
				Weekly	77,304	52,802	46.4																																																																												
				YTD	1,661,238	1,544,423	7.6																																																																												
				Heavy Lambs	€/100kg																																																																														
Belgium	538.6																																																																																		
Denmark	512.7																																																																																		
Germany	606.0																																																																																		
Spain	600.3																																																																																		
France	671.0																																																																																		
Croatia	577.9																																																																																		
Ireland	508.8																																																																																		
Italy	509.0																																																																																		
Cyprus	578.0																																																																																		
Latvia	439.8																																																																																		
Lithuania	385.7																																																																																		
Netherlands	585.9																																																																																		
Austria	542.0																																																																																		
Poland	435.4																																																																																		
Romania	485.6																																																																																		
Finland	383.3																																																																																		
Sweden	543.2																																																																																		
Community	592.6																																																																																		
Northern Ireland	479.7																																																																																		
Great Britain	526.2																																																																																		
United Kingdom	522.9																																																																																		
Community +UK	557.1																																																																																		
SLAUGHTERINGS AT SHEEP EXPORT PREMISES WEEK 31 (W/C 27th July)																																																																																			
CATEGORY	2020		2019		DIFFERENCE																																																																														
	Weekly	Cumulative	Weekly	Cumulative	Weekly	Cumulative																																																																													
Lambs/Hoggets	266	787,220	142	750,220	124	37,000																																																																													
Spring Lambs	69,686	670,297	42,906	568,982	26,780	101,315																																																																													
Ewes and Rams	7,350	203,677	9,709	224,925	-2,359	- 21,248																																																																													
Light Lambs	2	44	45	296	-43	- 252																																																																													
TOTAL	77,304	1,661,238	52,802	1,544,423	24,502	116,815																																																																													



Average Irish Price €/100 kg for Sheepmeat 2018-2020

