

Meat Market Report

24/08/20 - 30/08/20

Week
35



**An Roinn Talmhaíochta,
Bia agus Mara**
Department of Agriculture,
Food and the Marine

MEAT & MILK POLICY, DEPARTMENT OF AGRICULTURE, FOOD AND THE MARINE
Please send queries to Beefpolicy@agriculture.gov.ie

MARKET SUMMARY

Beef

Deadweight Prices c/100Kg (Including VAT)

	U3	U4	R3	R4	O3	O4	P+3
Steers	398.0	395.0	386.0	385.0	364.0	366.0	335.0
Heifers	401.0	400.0	387.0	386.0	370.0	367.0	334.0
Young Bulls	379.0	375.0	367.0	370.0	347.0	340.0	331.0
Cows			329.0	329.0	309.0	308.0	296.0

Liveweight Prices

*Bull Calf Average Price	€224.1 per head (Excluding VAT)
**Young Store Average Price	€213.0 per 100kg (Excluding VAT)
***Yearling (male & female) Price	€189.5 per 100kg (Excluding VAT)

* Aged 8-28 days ** Aged 180-364 days, Male & Female ***age 365-730 days

Slaughterings

34,999 cattle slaughtered this week, of which steers were 16,851 (48%), heifers 9,314 (27%), young bulls 1,253 (4%) and cows 6,902 (20%). Total YTD slaughter is 1,155,897 compared to 1,177,074 in 2019, a 1.8% decrease.

Live Trade

2,586 cattle were exported in the week commencing 24/8/2020. 1,376 to EU (Except NI). Live exports for 2020 amount to 211,217 compared to 242,488 in 2019.

*This data is provisional and subject to revision.

CONTENTS:

Page 2: Market Summary Beef
 Page 3: Market Summary Other Meats
 Page 4: Beef Price and Slaughter Summary
 Page 5: Comparative Beef Prices
 Page 6: Steer and Young Bull Price
 Page 7: Heifer and Cow Graphs
 Page 8: Price and Slaughter Graphs
 Page 9: Beef Export Maps

Page 10: Beef Export Info
 Page 11: Pig Price and slaughter graph
 Page 12: Sheepmeat Prices and Slaughter
 Page 13: Sheepmeat price and slaughter graphs
 Page 14 : Sheep Imports 6 months
 Page 15 : YTD Sheep Imports 2019 V 2020

MARKET SUMMARY

Pigmeat

Grade E Pig
Prices (Ex.
VAT)

Grade E Pig price Week Commencing 24/8/2020 was €159.11 per 100Kg compared to €173.97 the same week last year, which represents a 8.5% decrease.

Slaughtering

66,503 pigs were slaughtered in Week 35 of which 1,500 were sows. The Cumulative figure for pig slaughterings in 2020 is 2,296,260

Sheepmeat

Sheepmeat
Prices (Ex.
VAT)

The National average price Week commencing 24/8/2020 was €502.60 per 100Kg, an increase of 21.9% on the same week last year.

Slaughtering

60,507 sheep were slaughtered at Sheep export premises Week commencing 24/8/2020 compared to 61,942 in the same week 2019. Sheep slaughterings for 2020 are 4.7% up on 2019 at 1,872,639 head.

Live Trade

Total live exports stood at 1,835 head to the end of June 2020.

Poultry

Slaughtering

Cumulative Poultry slaughterings for 2020* stand at 71,426,318 birds as at the end of Week 34, up 3.5% compared to the same period last year.

*Latest Figures are provisional and subject to change

Dead Weight Prices	W/C	W/C	Same week 2019	% change prev week	% change 2019
	24/08/20	17/08/20	26/08/19		
Steers (R3) (c/kg)	365.8	369.0	343.1	-0.9%	6.6%
Heifers (R3) (c/kg)	367.6	371.6	352.9	-1.1%	4.2%
Young Bulls (U3) (c/kg)	359.7	361.5	341.8	-0.5%	5.2%
Cows (04) (c/kg)	292.1	293.9	284.0	-0.6%	2.8%

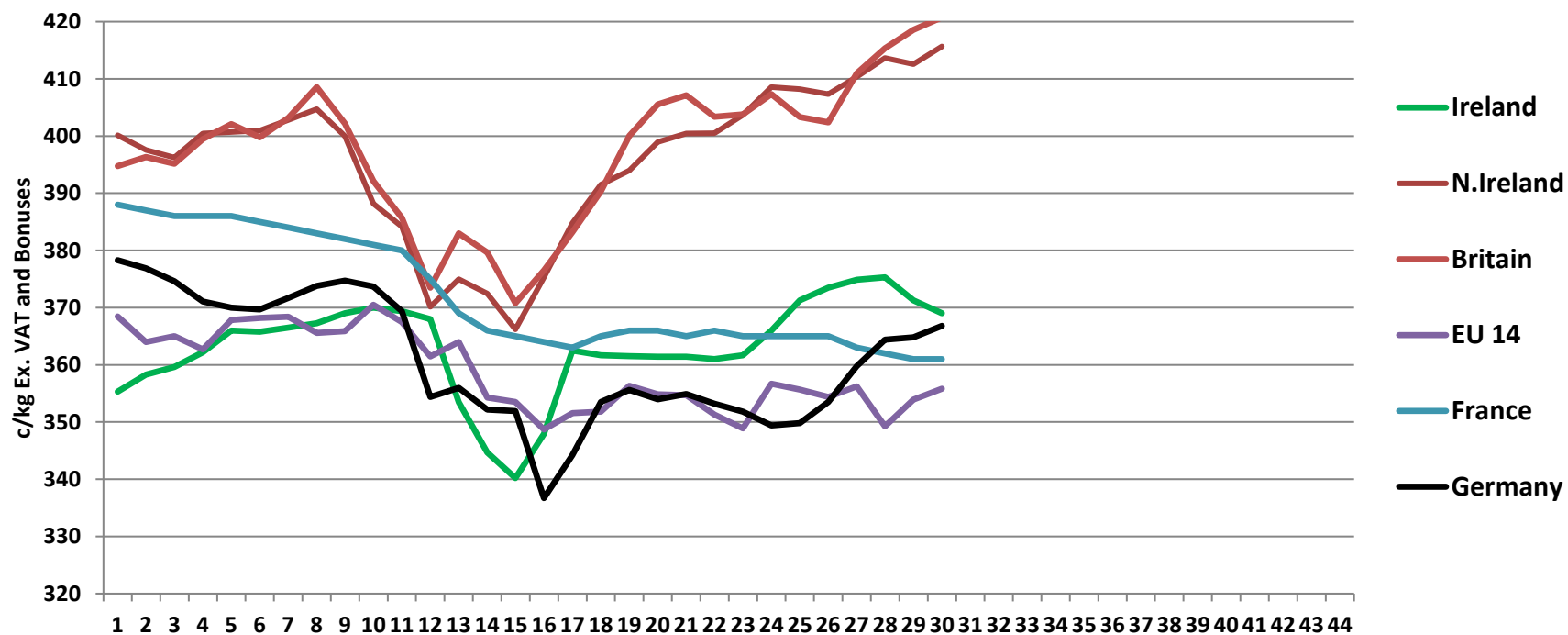
Live Weight Prices	W/C	W/C	Same week 2019	% change previous week	% change 2019
	24/08/20	17/08/20	26/08/19		
Yearlings (Male) (Aged 365 - 730 days) - (€/100Kg)	186	191	178	-2.6%	4.5%
Yearlings (Female) (Aged 365 - 730 days) - (€/100Kg)	193	195	180	-1.0%	7.2%
Young Stores (Male & Female) (Aged 180 - 364 days) - (€/100Kg)	213	216	203	-1.4%	4.9%
Bull Calf (€/head) Dairy	158.9	180.3	171.9	-11.8%	-7.6%
Bull Calf (€/head) Beef	289.2	199.5	242.7	44.9%	19.2%

Slaughter Figures	% of weekly figures	W/C 24-Aug-20	Same week 2019	Year to Date		Change 2020 v 2019	
				2020	2019	Head	%
Steers	48.1%	16,851	13,862	443,947	401,304	42,643	10.6%
Cows	19.7%	6,902	4,920	237,187	243,070	-5,883	-2.4%
Heifers	26.6%	9,314	8,981	347,146	346,370	776	0.2%
Young Bulls	3.6%	1,253	1,898	104,499	159,815	-55,316	-34.6%
Mature Bulls	1.9%	679	505	23,118	26,515	-3,397	-12.8%
Total	100%	34,999	30,166	1,155,897	1,177,074	-21,177	-1.8%

821

Live Exports	W/C 24-Aug-20	Same week 2019	W/C 17-Aug-20	Year to Date		Change 2019 v 2018	
				2020	2019	Head	%
Northern Ireland	1,210	263	1,459	40,741	21,160	19,581	93%
EU Except NI	1,376	1,808	1,121	156,249	213,251	-57,002	-27%
Third Countries	0	0	0	14,227	8,077	6,150	—
Total	2,586	2,071	2,580	211,217	242,488	-31,271	-13%
Calves YTD:		139,562		Adult YTD:Cattle		68,745	

Irish Deadweight Cattle Prices vs Selected Other Markets, 2020

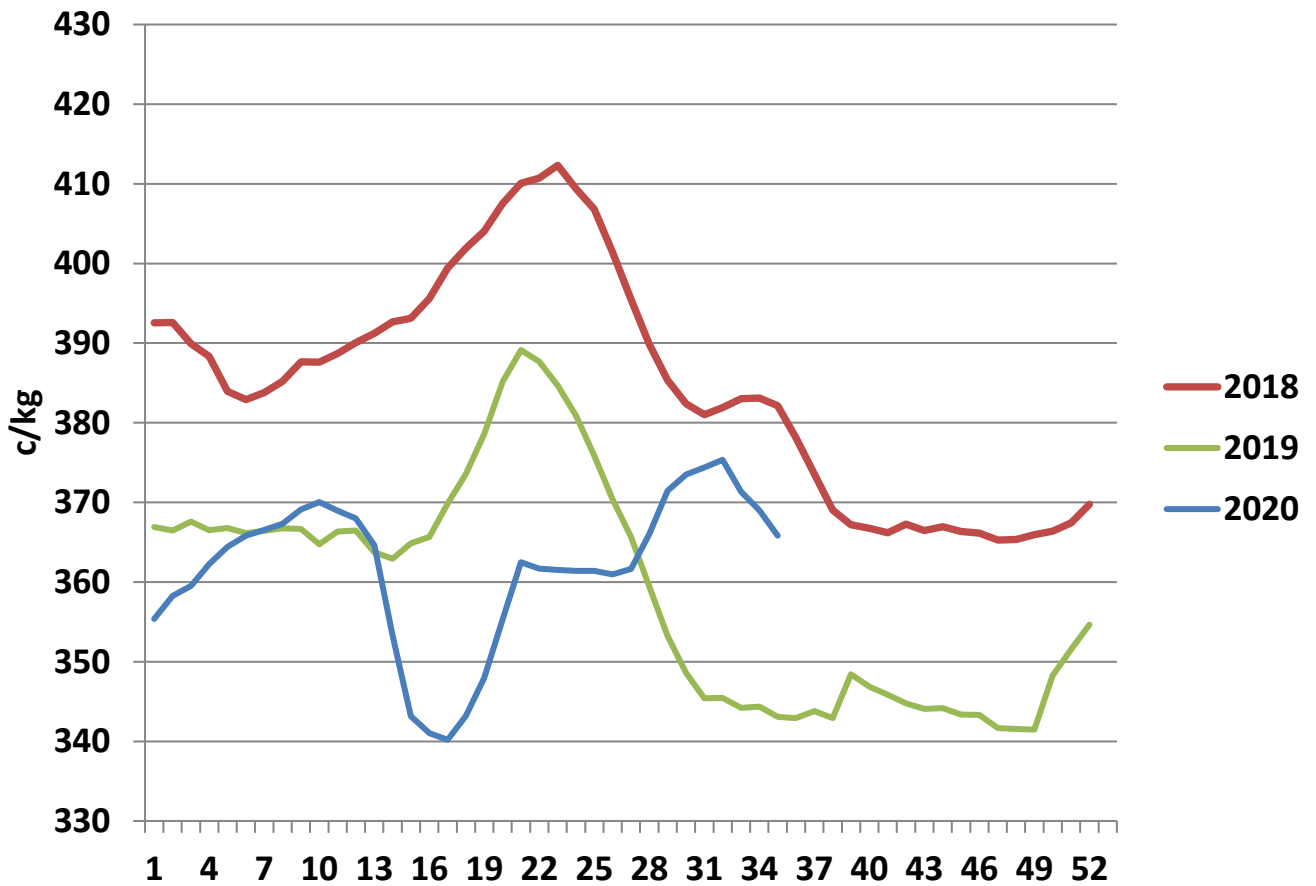


Week 34

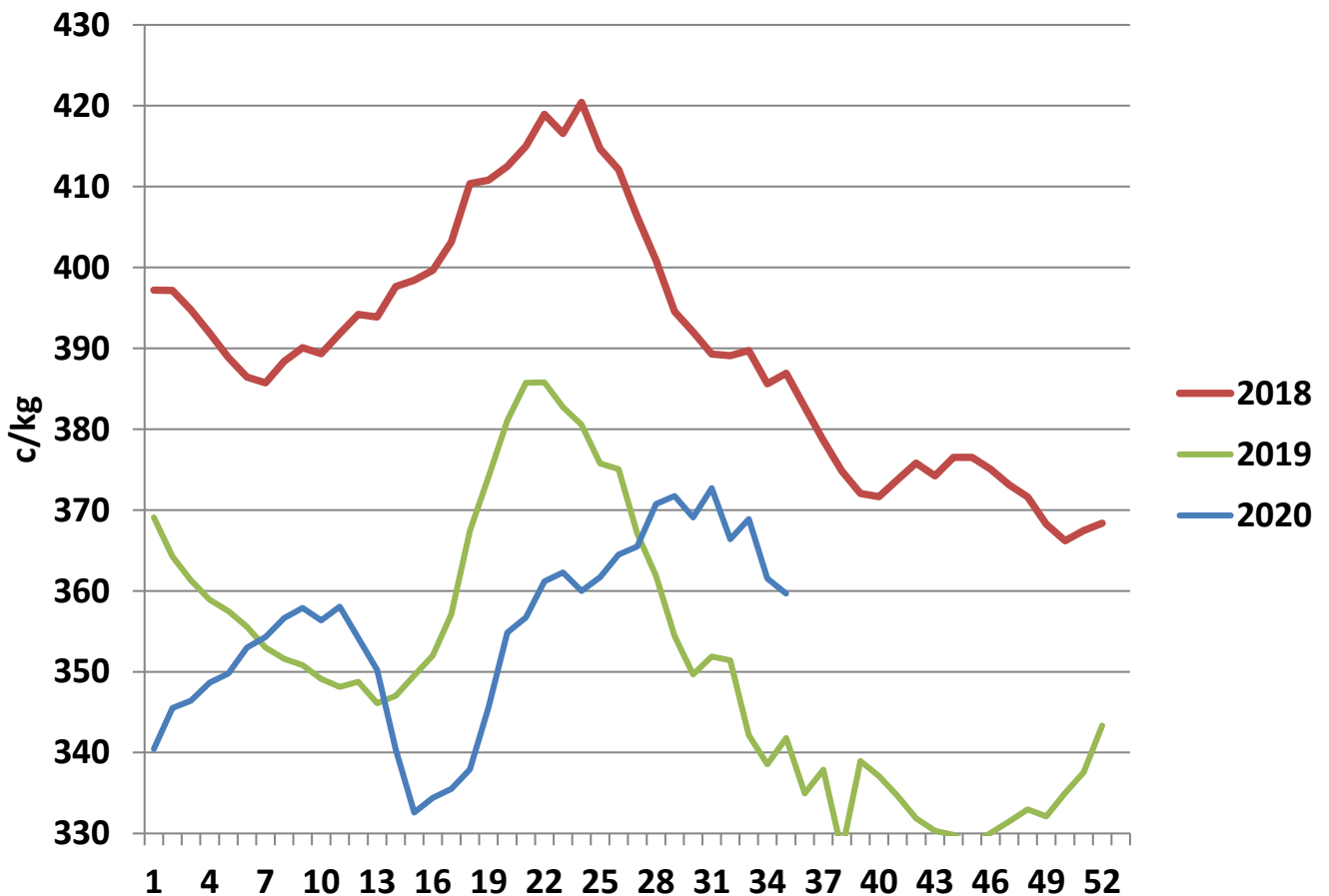
Livestock Pricing

	Ireland	NI	Britain	EU 14 Average	France	Germany
17/08/2020	369	416	421	356	361	367

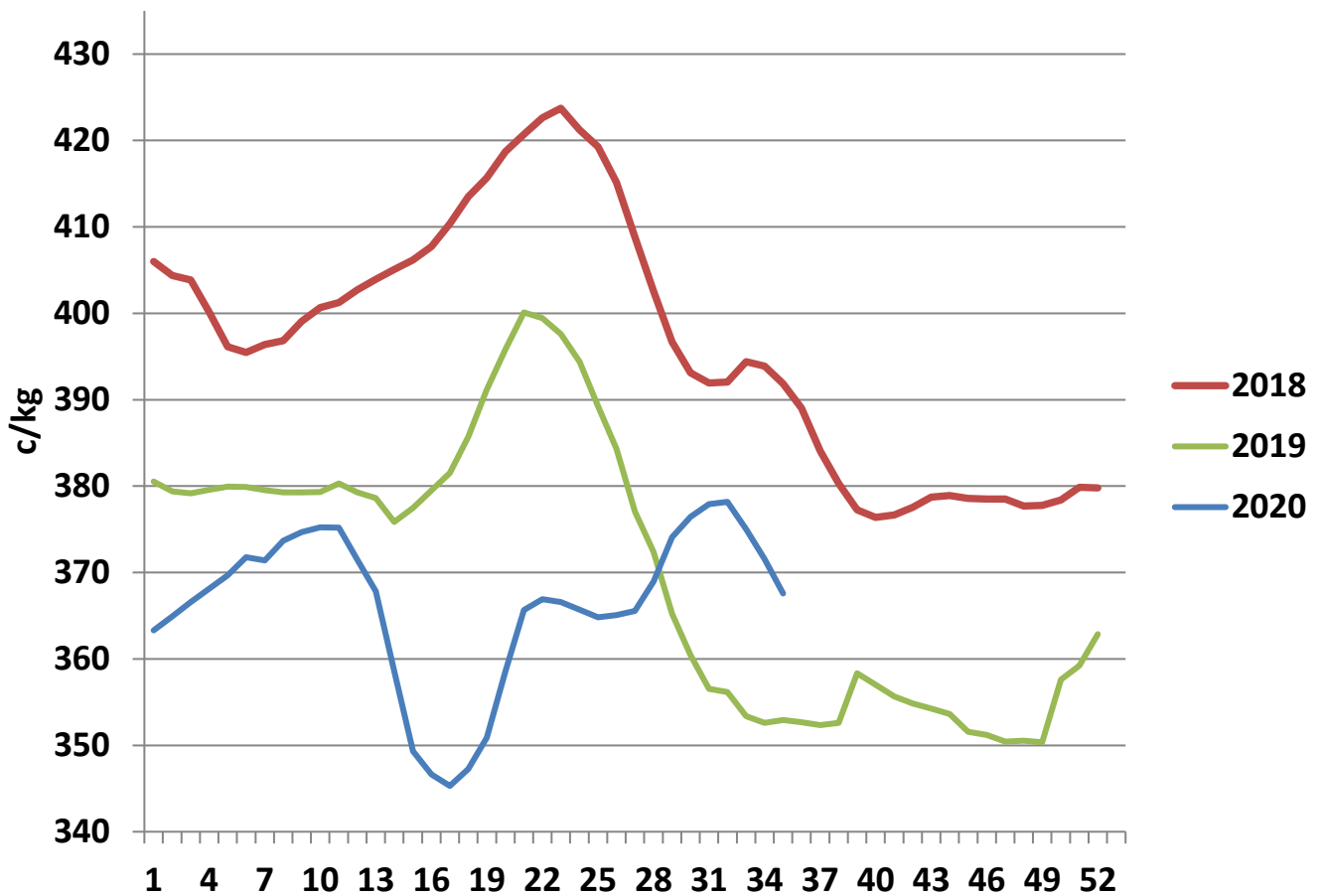
R3 Steer prices ex. VAT



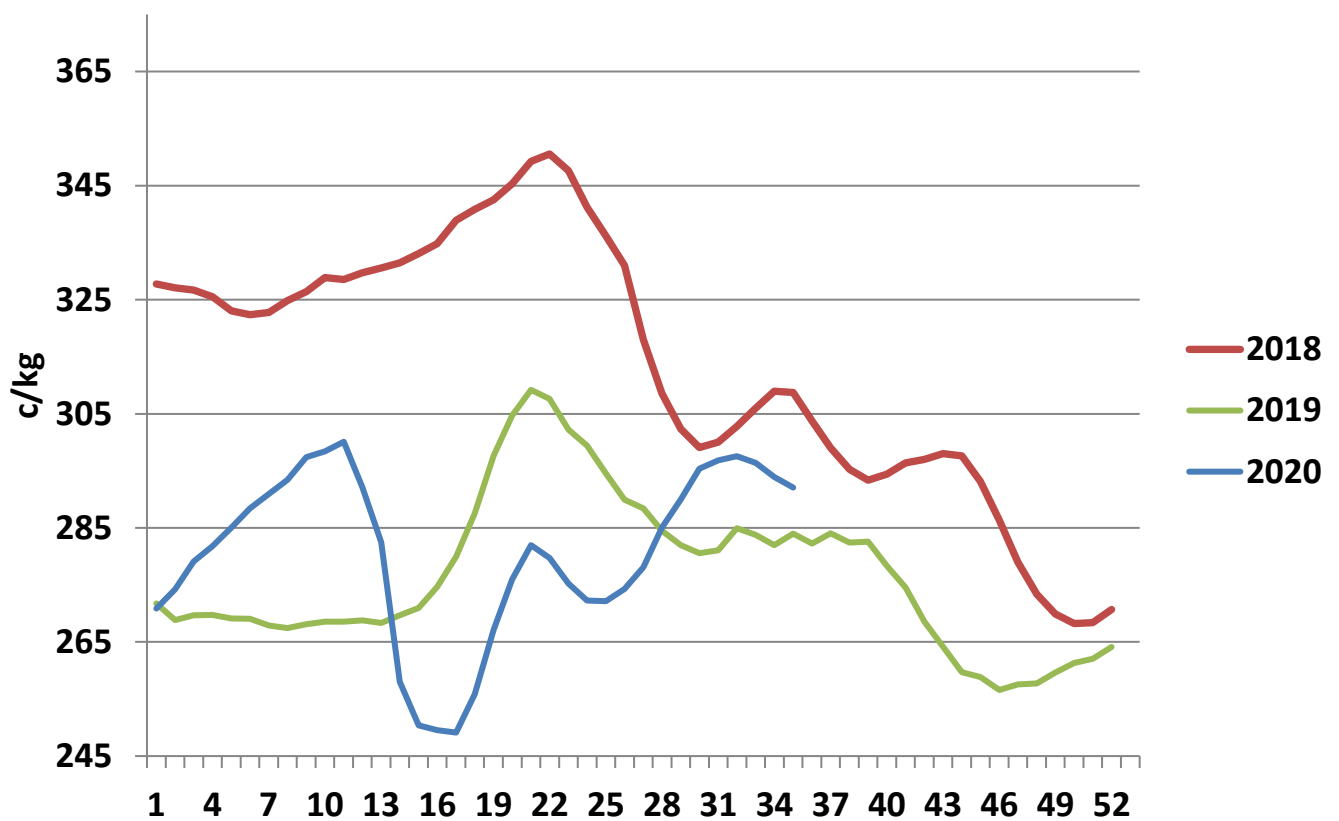
U3 Young Bull prices ex. VAT

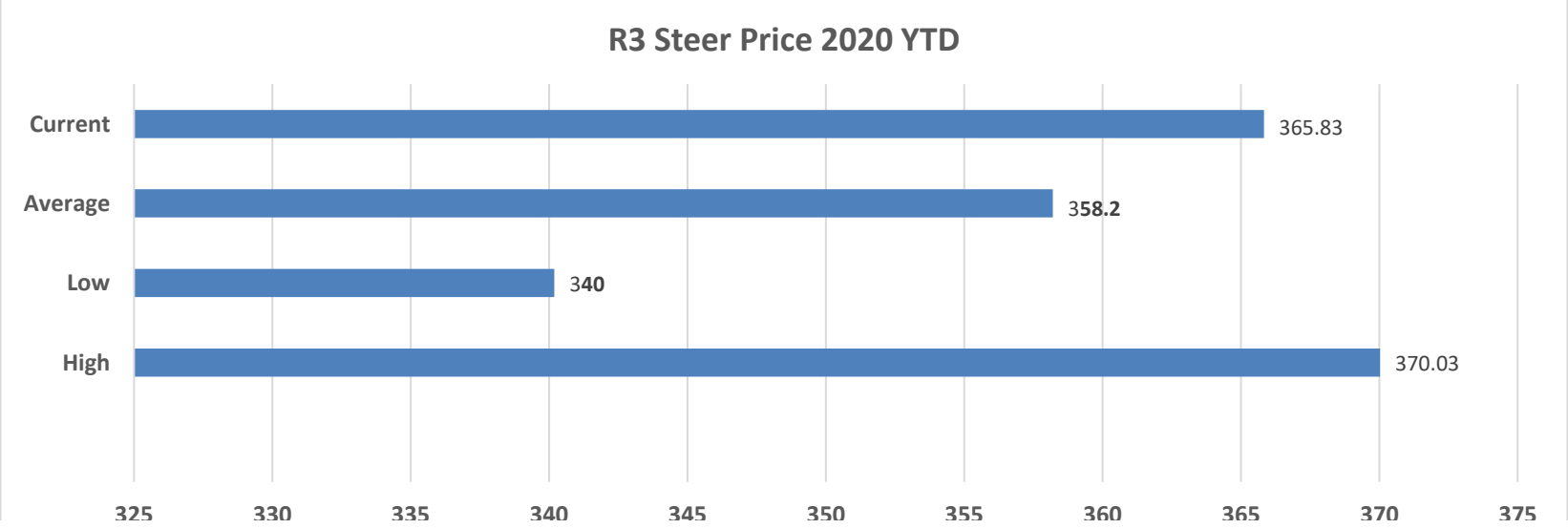
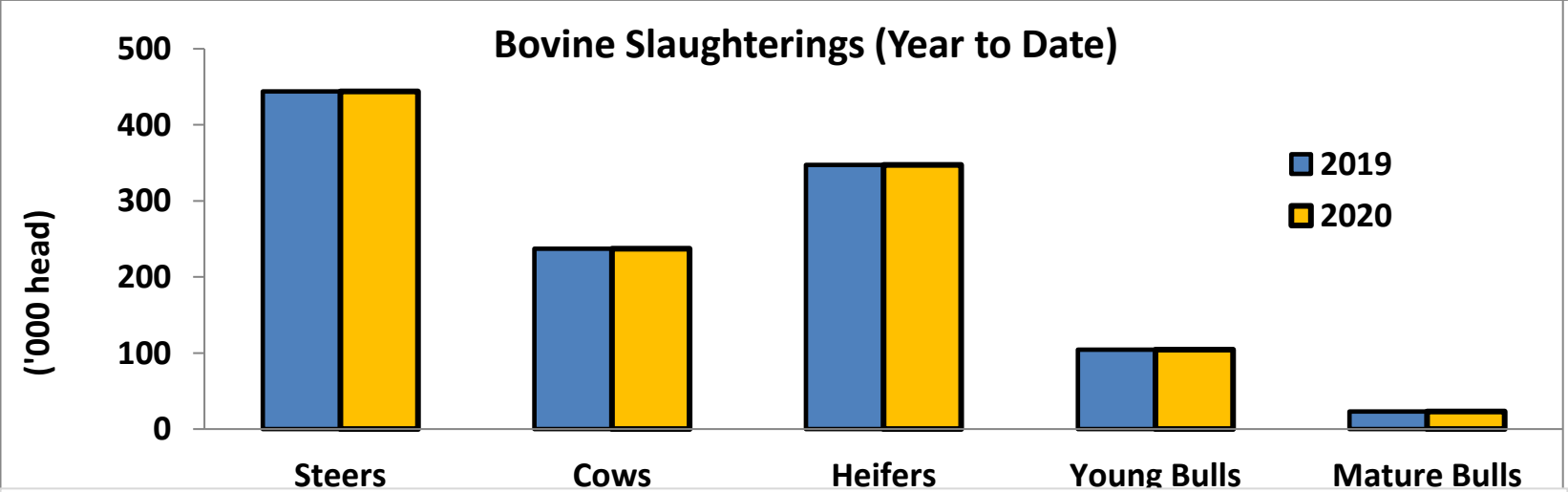
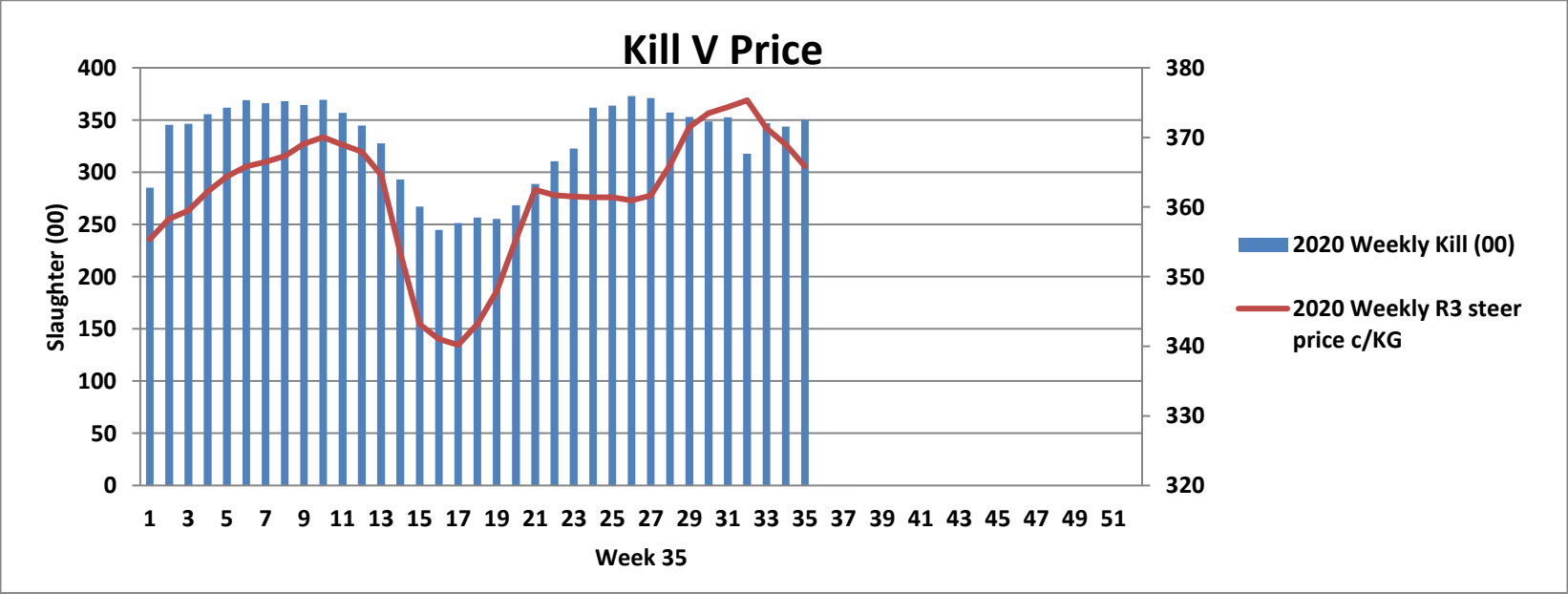


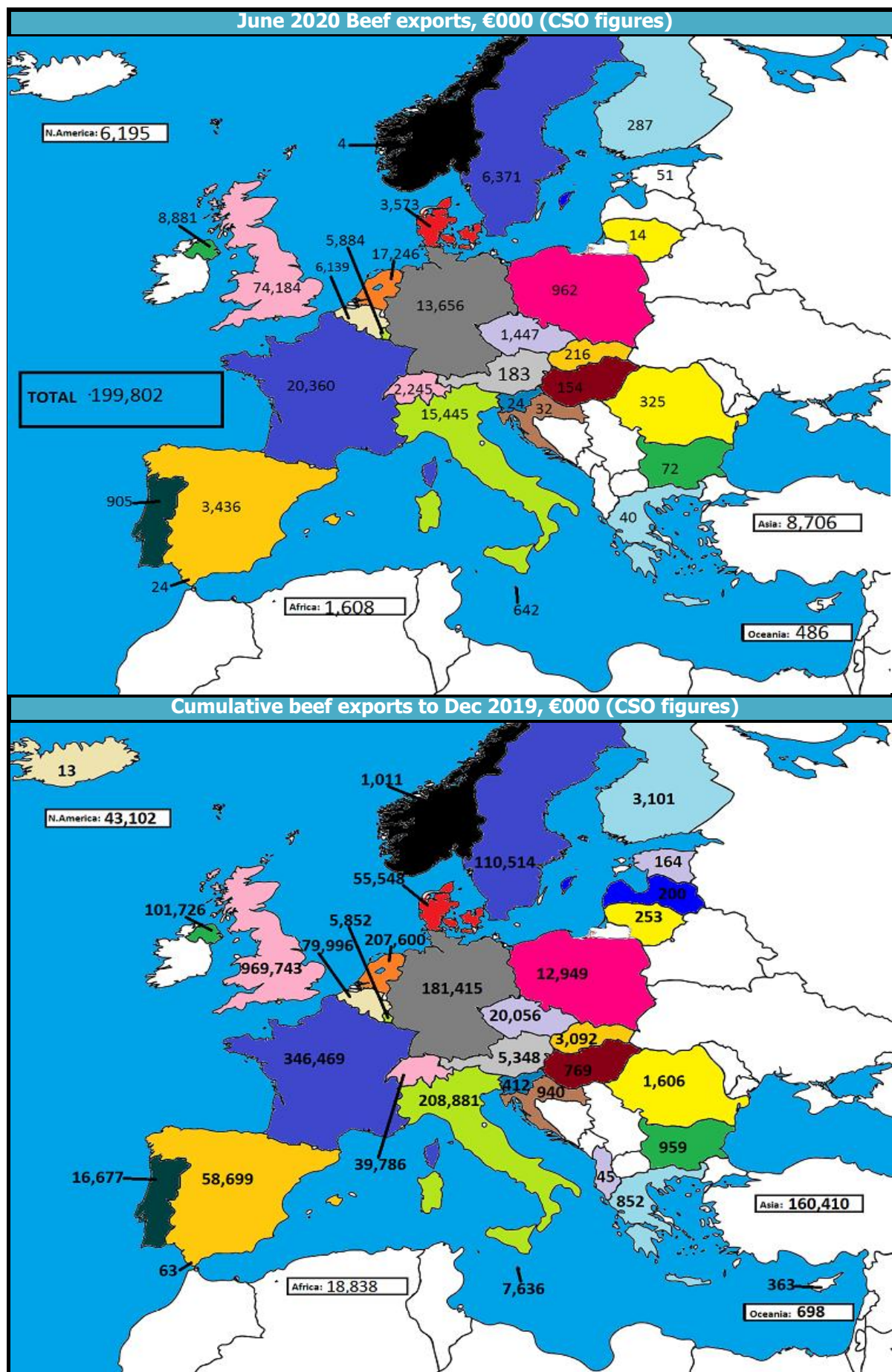
R3 Heifer prices ex. VAT

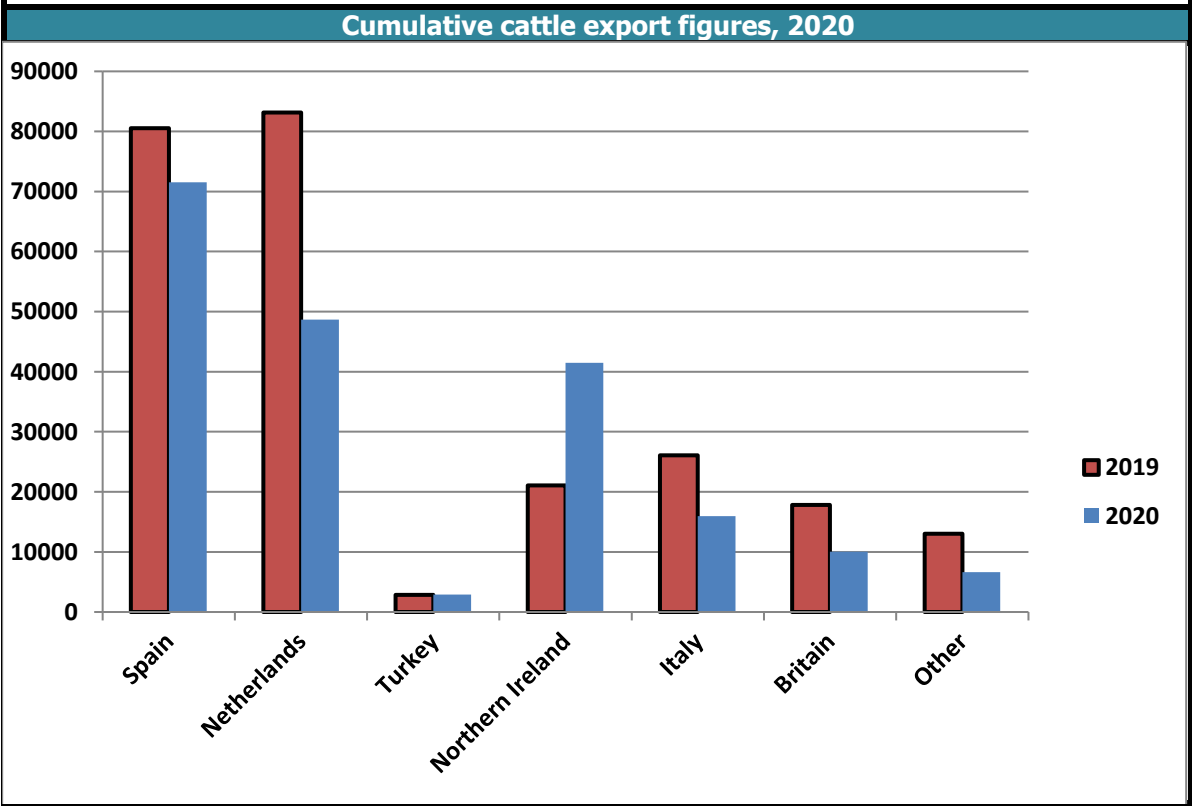
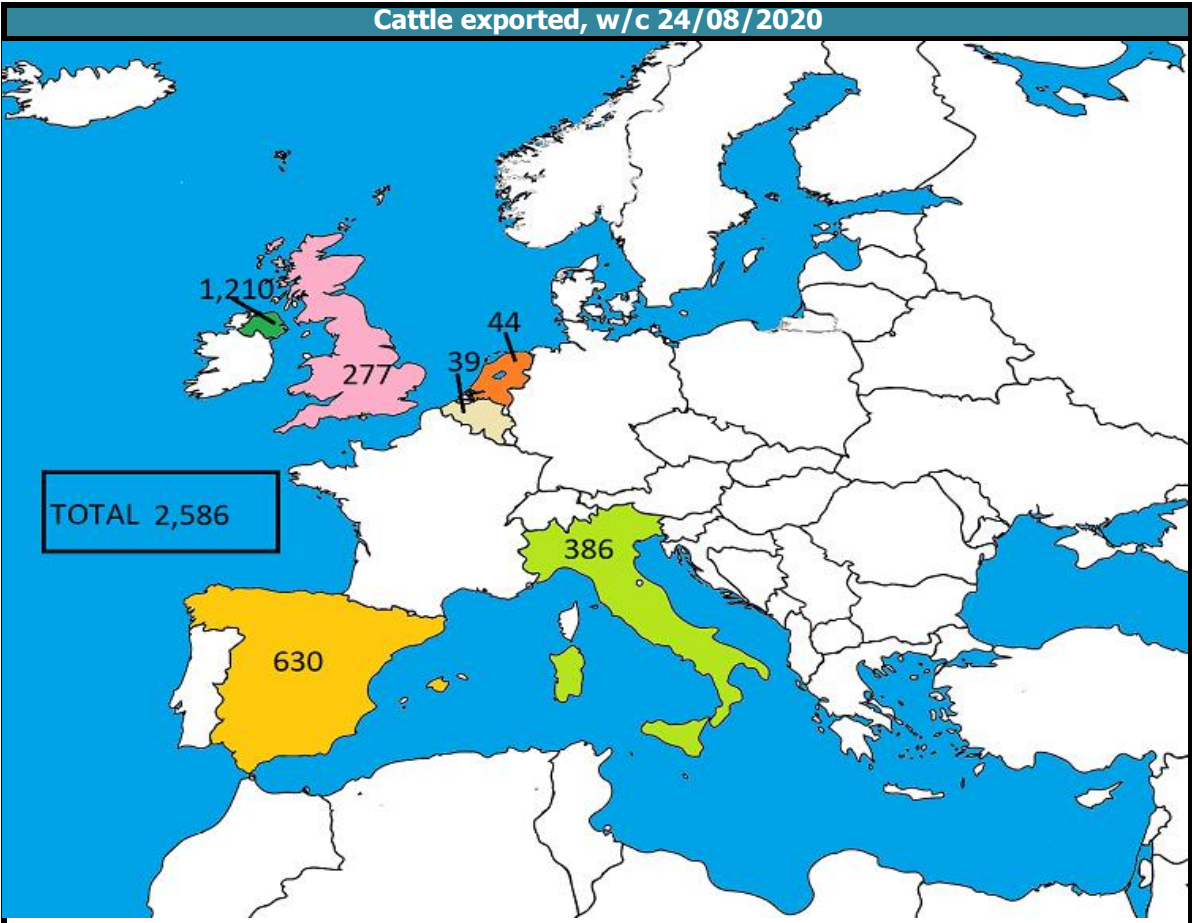


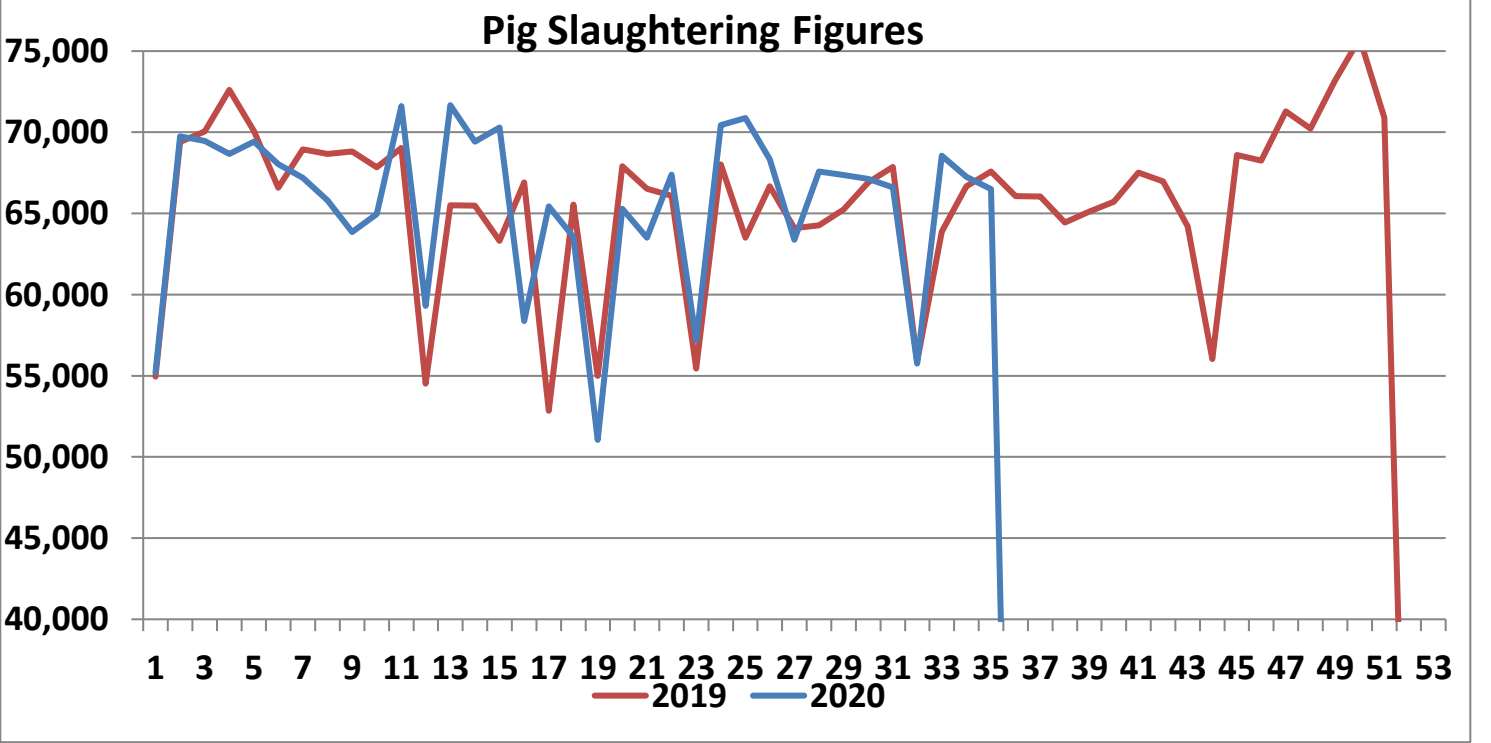
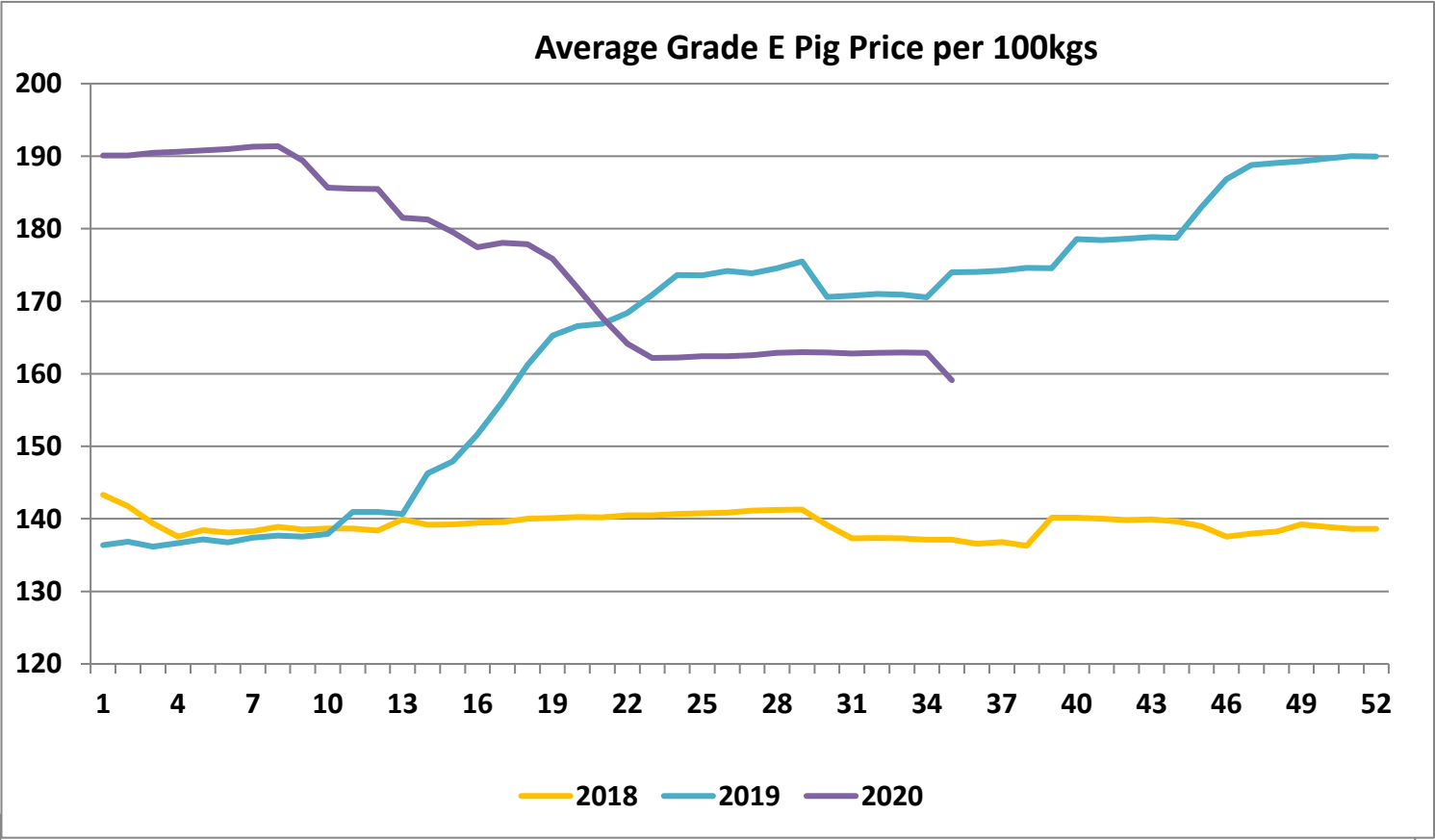
O4 Cow prices ex. VAT



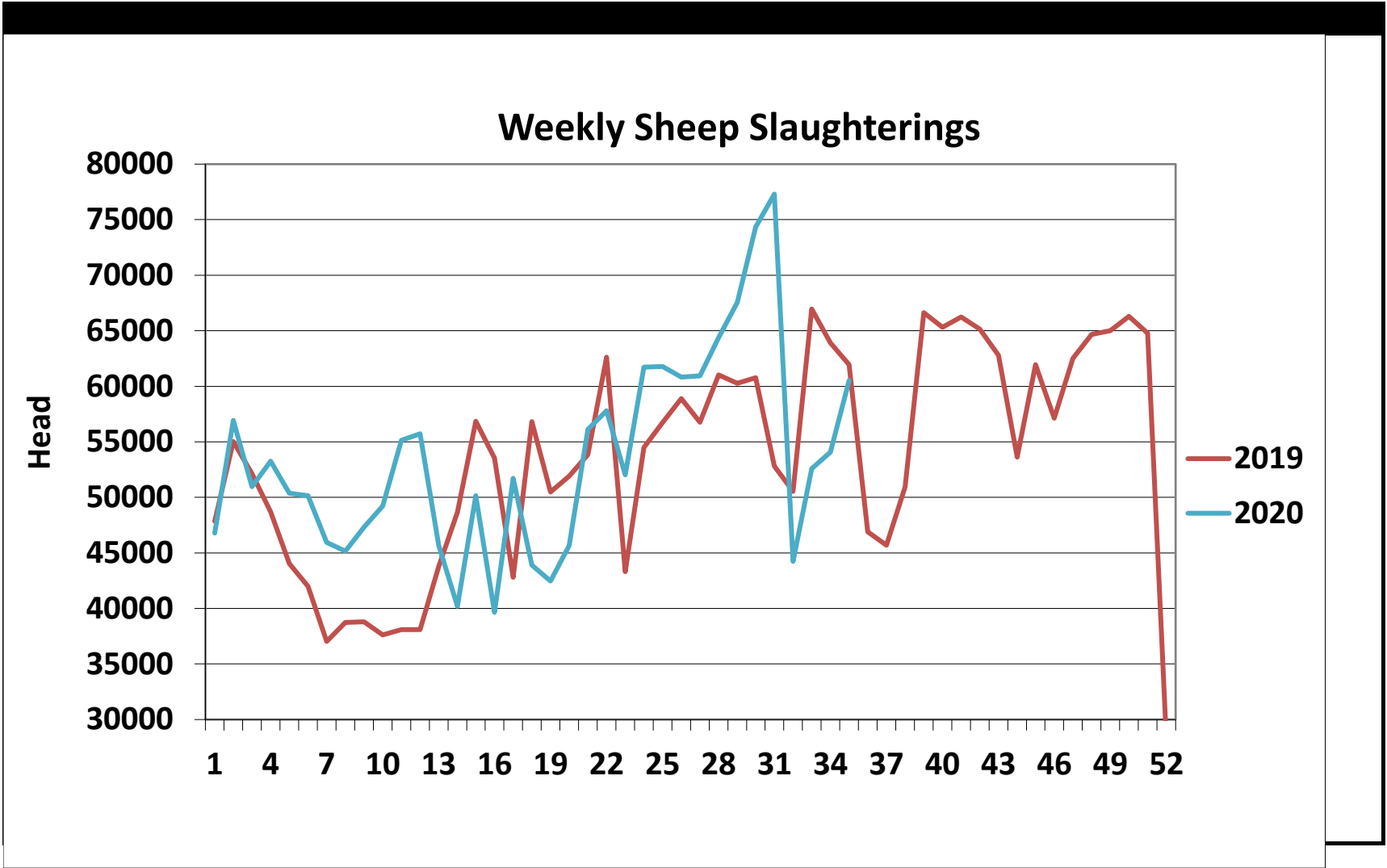








Sheepmeat Information Week 35 (w/c 24th Aug)																																																																																			
<div>Irish Prices €/100 kg</div> <table><tr><th>2020</th><th>2019</th><th>Change</th></tr><tr><td>Ave Factory Price</td><td>500.41</td><td>431.25</td><td>16.0</td></tr><tr><td>Ave Mart Price</td><td>441.51</td><td>368.46</td><td>19.8</td></tr><tr><td>National Ave Price</td><td>502.6</td><td>412.41</td><td>21.9</td></tr><tr><td>YTD Ave</td><td>523.99</td><td>476.89</td><td>9.9</td></tr></table> <div></div> <table><tr><th>Slaughterings</th><th>2020</th><th>2019</th><th>Change</th></tr><tr><td>Weekly</td><td>60,507</td><td>61,942</td><td>-2.3</td></tr><tr><td>YTD</td><td>1,872,639</td><td>1,787,787</td><td>4.7</td></tr></table> <div></div>				2020	2019	Change	Ave Factory Price	500.41	431.25	16.0	Ave Mart Price	441.51	368.46	19.8	National Ave Price	502.6	412.41	21.9	YTD Ave	523.99	476.89	9.9	Slaughterings	2020	2019	Change	Weekly	60,507	61,942	-2.3	YTD	1,872,639	1,787,787	4.7	<div>NOTE: EU PRICES ARE PROVISIONAL AT THE TIME OF PUBLICATION AND MAY NOT BE RELLECTIVE OF THE CURRENT PERIOD</div> <table><tr><th>Heavy Lambs</th><th>€/100kg</th></tr><tr><td>Belgium</td><td>521.8</td></tr><tr><td>Denmark</td><td>512.7</td></tr><tr><td>Germany</td><td>614.3</td></tr><tr><td>Spain</td><td>597.7</td></tr><tr><td>France</td><td>683.0</td></tr><tr><td>Croatia</td><td>629.3</td></tr><tr><td>Ireland</td><td>502.6</td></tr><tr><td>Italy</td><td>518.0</td></tr><tr><td>Cyprus</td><td>576.0</td></tr><tr><td>Latvia</td><td>345.3</td></tr><tr><td>Lithuania</td><td>377.5</td></tr><tr><td>Netherlands</td><td>591.6</td></tr><tr><td>Austria</td><td>547.0</td></tr><tr><td>Poland</td><td>281.9</td></tr><tr><td>Romania</td><td>250.5</td></tr><tr><td>Finland</td><td>418.8</td></tr><tr><td>Sweden</td><td>516.4</td></tr><tr><td>Community</td><td>584.6</td></tr><tr><td>Northern Ireland</td><td>473.6</td></tr><tr><td>Great Britain</td><td>519.0</td></tr><tr><td>United Kingdom</td><td>511.1</td></tr><tr><td>Community +UK</td><td>557.5</td></tr></table> <div></div>			Heavy Lambs	€/100kg	Belgium	521.8	Denmark	512.7	Germany	614.3	Spain	597.7	France	683.0	Croatia	629.3	Ireland	502.6	Italy	518.0	Cyprus	576.0	Latvia	345.3	Lithuania	377.5	Netherlands	591.6	Austria	547.0	Poland	281.9	Romania	250.5	Finland	418.8	Sweden	516.4	Community	584.6	Northern Ireland	473.6	Great Britain	519.0	United Kingdom	511.1	Community +UK	557.5
				2020	2019	Change																																																																													
				Ave Factory Price	500.41	431.25	16.0																																																																												
				Ave Mart Price	441.51	368.46	19.8																																																																												
				National Ave Price	502.6	412.41	21.9																																																																												
				YTD Ave	523.99	476.89	9.9																																																																												
				Slaughterings	2020	2019	Change																																																																												
				Weekly	60,507	61,942	-2.3																																																																												
				YTD	1,872,639	1,787,787	4.7																																																																												
				Heavy Lambs	€/100kg																																																																														
Belgium	521.8																																																																																		
Denmark	512.7																																																																																		
Germany	614.3																																																																																		
Spain	597.7																																																																																		
France	683.0																																																																																		
Croatia	629.3																																																																																		
Ireland	502.6																																																																																		
Italy	518.0																																																																																		
Cyprus	576.0																																																																																		
Latvia	345.3																																																																																		
Lithuania	377.5																																																																																		
Netherlands	591.6																																																																																		
Austria	547.0																																																																																		
Poland	281.9																																																																																		
Romania	250.5																																																																																		
Finland	418.8																																																																																		
Sweden	516.4																																																																																		
Community	584.6																																																																																		
Northern Ireland	473.6																																																																																		
Great Britain	519.0																																																																																		
United Kingdom	511.1																																																																																		
Community +UK	557.5																																																																																		
SLAUGHTERINGS AT SHEEP EXPORT PREMISES WEEK 35 (W/C 24th Aug)																																																																																			
CATEGORY	2020		2019		DIFFERENCE																																																																														
	Weekly	Cumulative	Weekly	Cumulative	Weekly	Cumulative																																																																													
Lambs/Hoggets	104	787,709	126	750,835	-22	36,874																																																																													
Spring Lambs	51,355	848,599	52,695	775,806	-1,340	72,793																																																																													
Ewes and Rams	9,044	236,280	9,121	260,785	-77	24,505																																																																													
Light Lambs	4	51		361	4	310																																																																													
TOTAL	60,507	1,872,639	61,942	1,787,787	-1,435	84,852																																																																													



Average Irish Price €/100 kg for Sheepmeat 2018-2020

