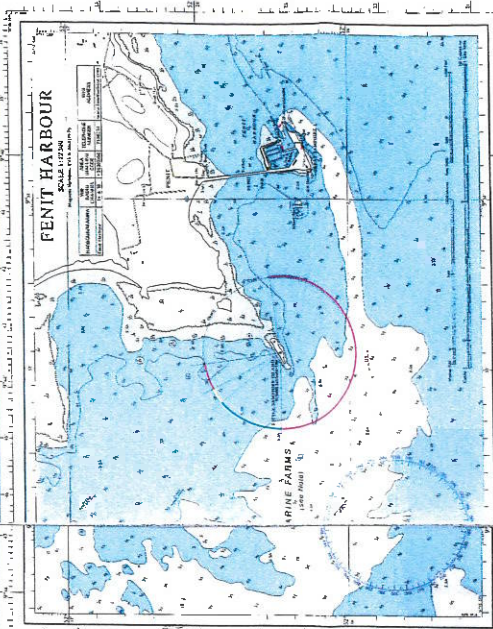
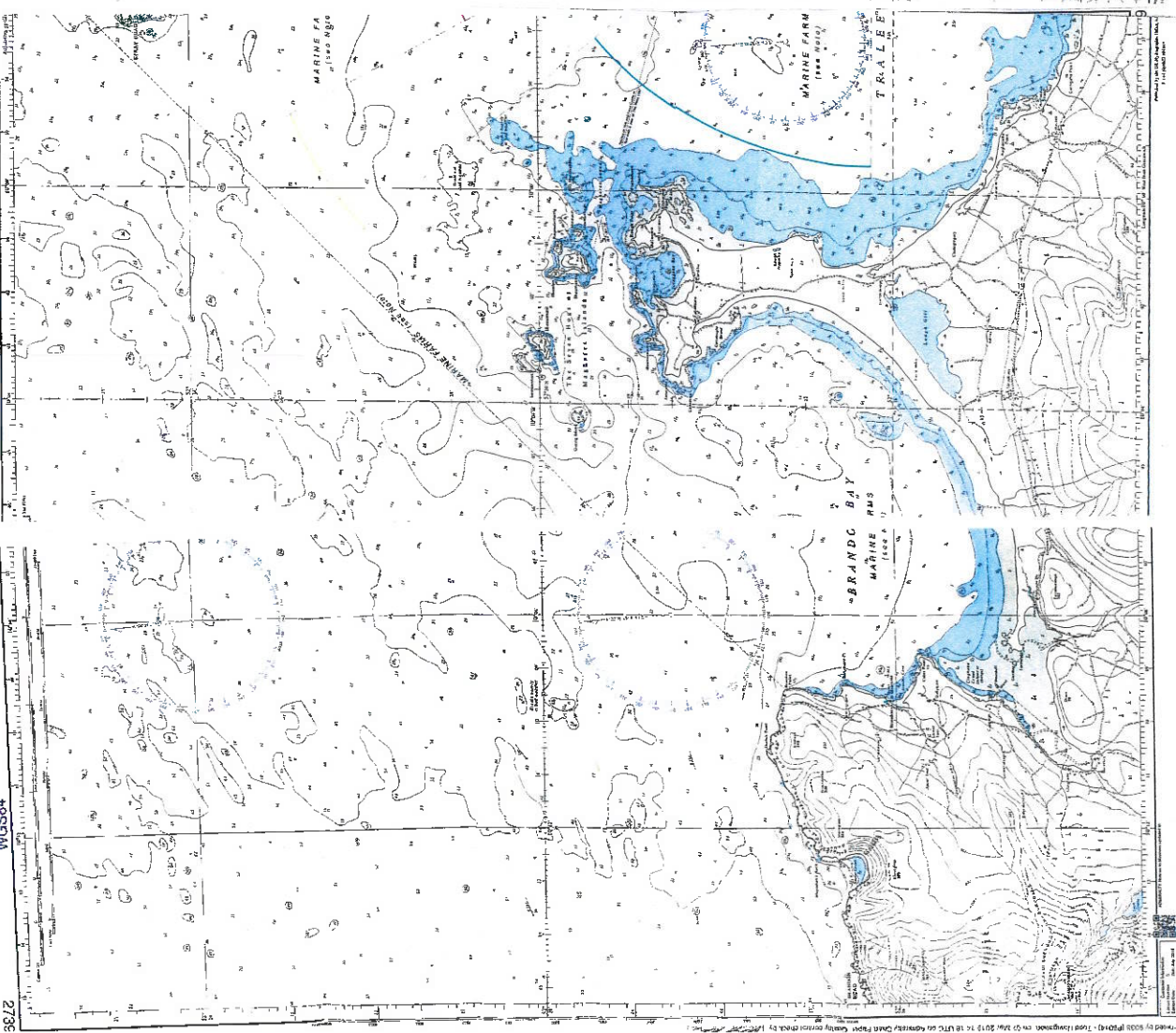
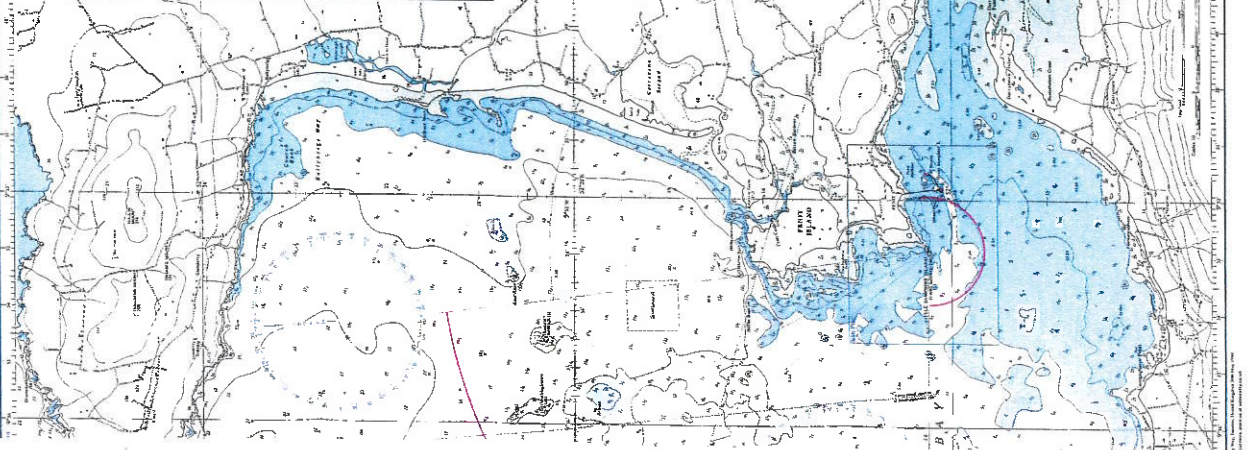


ADMIRALTY



**IRLAND - WEST COAST**  
**BRANDON AND TRALEE BAYS**  
OFFICE OF HYDROGRAPHY

**NOTE**  
This chart is based on the latest available information and is subject to change without notice. It is not to be used for navigation unless it is accompanied by the appropriate sailing directions and tide tables. The Admiralty is not responsible for any loss or damage arising from the use of this chart.



WGS84

WGS84

2735