

HARBOUR LAYOUT,
SCHULL HARBOUR,
CO. CORK

<u>Marina Berth Accommodation</u>	
Class II +	171
Class I	64
Total	<u>235</u>

Vessel Classes	
Class I	up to 8m (26 ft.)
Class II	8m to 10m (33 ft.)
Class III	10m to 12m (33 ft. to 40 ft.)
Class IV	12m to 15m (40 ft. to 50 ft.)
Class V	15m to 18m (50 ft. to 60 ft.)
Class VI	18m to 25m (60 ft. to 80 ft.)
Class VII	over 25m (80 ft.)
Ribs etc.	up to 8m (26 ft.)

Marina Accommodation

Visitor Berths
Long Tern Berths
Marine Leisure Berths

See Angling Operators
Diving Operators
Marine Wildlife Watching
Boat/Yacht Charter
Other

Additional Facilities for Fishing Vessels

50m Berthage for Inshore Fishing Boats
80m Trawler Berthage on Fishing Vessel Pontoon

Landside Facilities

95 Car Parking Spaces
Sanitary and Changing Facility
Marina Operators and Information Office

Note:

Levels to Ordnance Datum Poolbeg

Level Information		Chart Datum	Poolbing Datum
Existing Per Deck	+4.94m OD		+5.52m OD Poolbing
MHWs +3.2m OD			+3.78m OD Poolbing
MHWN +2.8m OD			+3.18m OD Poolbing
MLWN +1.1m OD			+1.68m OD Poolbing
MLWS +0.4m OD			+0.98m OD Poolbing
LAT +0.0m OD			+0.38m OD Poolbing

A	Issued for Foreshore	03/07/12	CC	AC
Rev	Description:	Date:	Drawn:	Chequed:

Cronin Millar Consulting Engineers

Civil	Marine	Structural	Environmental
1	1	1	1
2	2	2	2
3	3	3	3
4	4	4	4
5	5	5	5
6	6	6	6
7	7	7	7
8	8	8	8
9	9	9	9
10	10	10	10
11	11	11	11
12	12	12	12
13	13	13	13
14	14	14	14
15	15	15	15
16	16	16	16
17	17	17	17
18	18	18	18
19	19	19	19
20	20	20	20
21	21	21	21
22	22	22	22
23	23	23	23
24	24	24	24
25	25	25	25
26	26	26	26
27	27	27	27
28	28	28	28
29	29	29	29
30	30	30	30
31	31	31	31
32	32	32	32
33	33	33	33
34	34	34	34
35	35	35	35
36	36	36	36
37	37	37	37
38	38	38	38
39	39	39	39
40	40	40	40
41	41	41	41
42	42	42	42
43	43	43	43
44	44	44	44
45	45	45	45
46	46	46	46
47	47	47	47
48	48	48	48
49	49	49	49
50	50	50	50
51	51	51	51
52	52	52	52
53	53	53	53
54	54	54	54
55	55	55	55
56	56	56	56
57	57	57	57
58	58	58	58
59	59	59	59
60	60	60	60
61	61	61	61
62	62	62	62
63	63	63	63
64	64	64	64
65	65	65	65
66	66	66	66
67	67	67	67
68	68	68	68
69	69	69	69
70	70	70	70
71	71	71	71
72	72	72	72
73	73	73	73
74	74	74	74
75	75	75	75
76	76	76	76
77	77	77	77
78	78	78	78
79	79	79	79
80	80	80	80
81	81	81	81
82	82	82	82
83	83	83	83
84	84	84	84
85	85	85	85
86	86	86	86
87	87	87	87
88	88	88	88
89	89	89	89
90	90	90	90
91	91	91	91
92	92	92	92
93	93	93	93
94	94	94	94
95	95	95	95
96	96	96	96
97	97	97	97
98	98	98	98
99	99	99	99
100	100	100	100

The Mews
Copperfields
Cobh
Co. Cork

Ph: 021 4815441
email: cork@cmc.ie
website: www.cmc.ie

Client: Schull Community Harbour

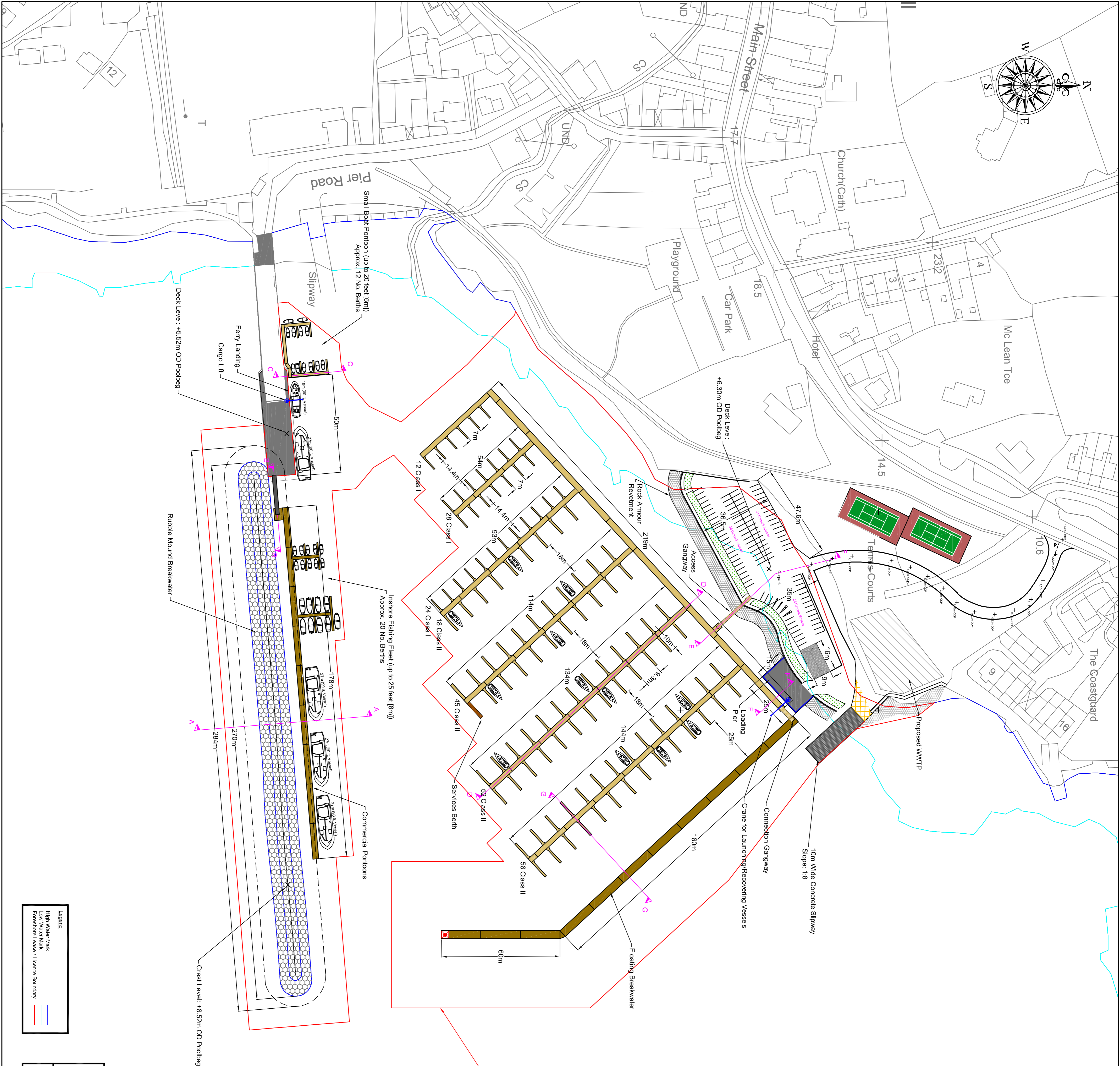
Schull Harbour Development

This drawing to be read in conjunction with all other CMCE drawings and any other relevant information.

No dimensions are to be scaled from this drawing.

Unless noted otherwise, all dimensions are in millimeters and all levels are in meters from the noted datum.

Copyright reserved.



Legend

High Water Mark
Low Water Mark
Foreshore Lease / Licence Boundary

Digital Map Series
1,2500
6768 - C
6784 - A

Ordnance Survey Ireland Licence No. EN 0061908

© Ordnance Survey Ireland/Government of Ireland

The Mews		Ph: 021 481544	
Copperfields		email: info@the-mews.co.uk	
Co. Cork		website: www.the-mews.co.uk	
Client:	Schull Community Harbour Development Company		
Project:	Schull Harbour Development		
Title:	Layout Plan		
Scale:	1:1000	Show Spec:	A1
Drawn By:	CC	Checked By:	AC
		Drawing No:	C34/H/3
		Revision:	A