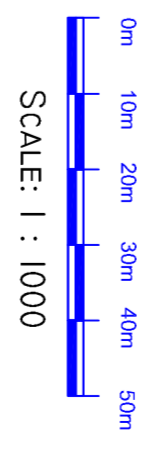


SITE MAP



SCALE: 1 : 1000

Note that the depths on this chart are relative to OD Poolbeg and above land levelling convention being +ve when ABOVE datum and -ve when BELOW datum.

Tidal information for Schull from Admiralty Tide Tables 2003

MHWS MLWN MLWS Mean Level
+3.78 +3.18 +1.88 +0.98

Levels are in metres above OD Poolbeg

Chart Datum is at +0.58m OD Poolbeg

NOTES

- (1) Depths from Ocean Electronic (210kHz) echo-sounder.
- (2) Levels in metres and decimetres reduced to OD Poolbeg.
- (3) Horizontal control by Trimble NT3000 Differential GPS
- (4) Constructed on Irish National Grid
- (5) Tidal levels measured at Pier at Schull Harbour
- (6) Deck level supplied by Engineer +5.52m OD Poolbeg
- (6) Shoreline approximate.

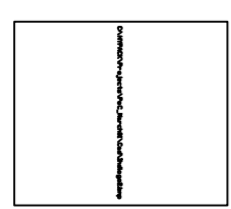
CONSULTING ENGINEER

D J FITZGIBBON
& Company Limited
3, Woods Place,
York Street,
Cork.

PRODUCED BY :

INSHI HYDRODATA LTD.
RATHMACILLIG WEST,
BALLYGARVAN,
CO. CORK

Tel: (021) 4311255
Fax: (021) 4311740
e-mail: info@hydrodata.ie



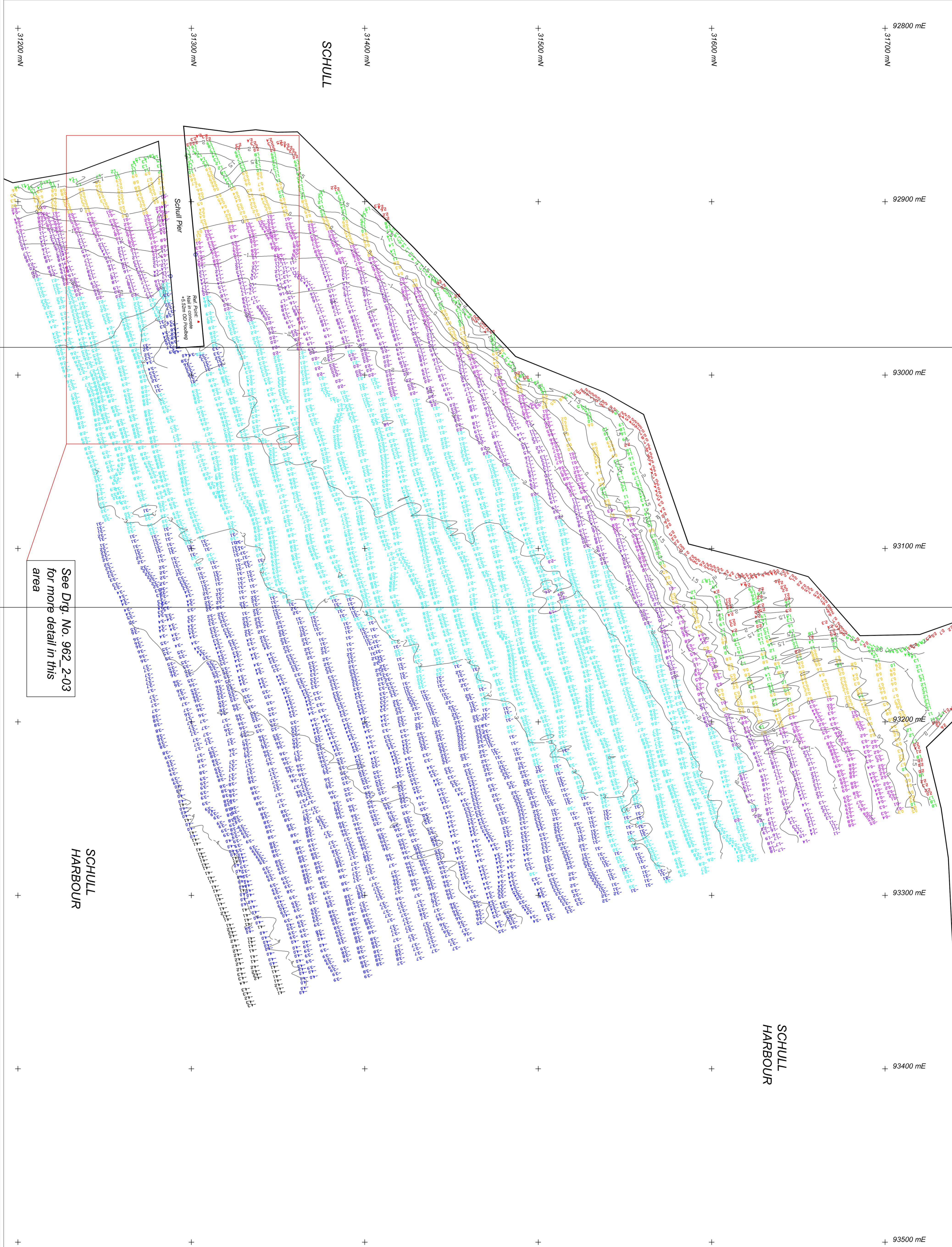
DRAWN BY:	T. BRUTON	DATUM:	OD Poolbeg
APPROVED BY:	J.F. WALSH	GRID:	IM.G.

SURVEY DATE : December 3rd 2003

DRAWING NO. 926.1/03

PROJECT : SCHULL HARBOUR DEVELOPMENT

DWG. TITLE : BATHYMETRIC SURVEY



SCHULL

SCHULL
HARBOUR

See Dwg. No. 962_2-03
for more detail in this
area

SCHULL
HARBOUR