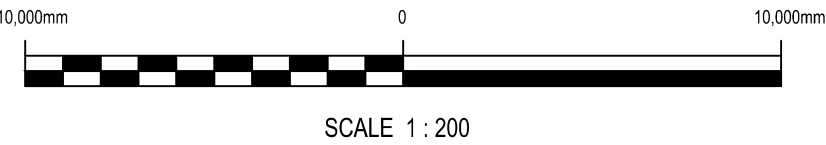
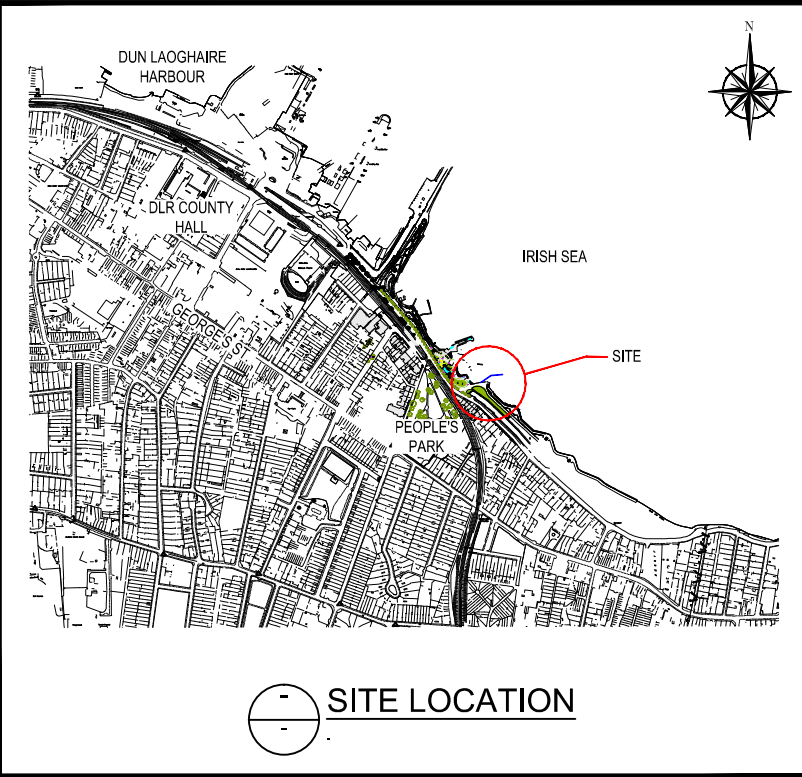


Outfall CL
Scale (Horz): 1:200
Scale (Vert): 1:200



NOTES



A	13.11.12	OPTION 2 OMITTED , SECTION REVISED	KC	MD	MD
REV	DATE	DESCRIPTION	D	C	A

PRELIMINARY

COPYRIGHT RESERVED - THIS DRAWING IS NOT TO BE USED FOR A PURPOSE OTHER THAN THAT FOR WHICH IT HAS BEEN ISSUED BY NICHOLAS O'DWYER LTD. NOR IS IT TO BE COPIED OR REPRODUCED IN ANY MANNER WITHOUT WRITTEN CONSENT.



Nicholas O'Dwyer
CONSULTING ENGINEERS
Nutgrove Office Park, Nutgrove Avenue, Dublin 14
Tel: 01-296 9000 Fax: 01-296 9001 E-mail: dublin@nodwyer.com

CLIENT



Dún Laoghaire-Rathdown
County Council Comhairle Contae
Dhún Laoghaire-Ráth an Dúin

PROJECT

**PROPOSED
MARINE OUTFALL**

TITLE

LONGITUDINAL SECTIONS

SCALES	DRAWN C Doyle	CHECKED MD	APPROVED MD
1:200 @ A1	DATE 27.08.2012	DATE 27.08.2012	DATE 27.08.2012
DRAWING No.	30374-02		REV A