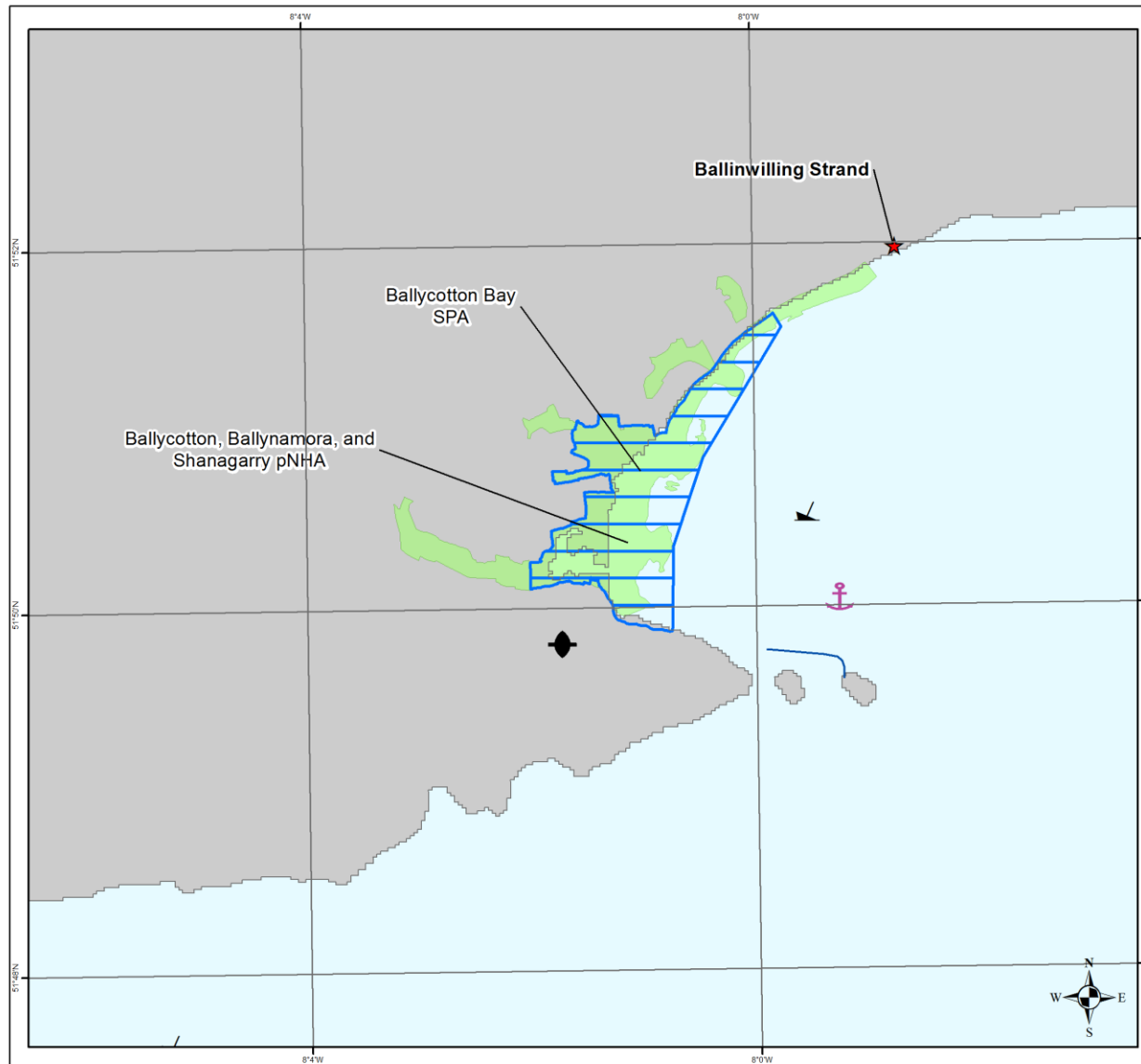


**ATTACHMENT D: PROTECTED SITES WITHIN 10km  
OF PROJECT SITE**



### Celtic Interconnector

Protected Sites within 10km of Ballinwilling Strand project site

**Legend**

- ★ Landing Point
- ⚓ Wreck

**Infrastructure**

- ⚓ Anchorage area
- ⚓ Rescue station
- Cable

**Protected Areas**

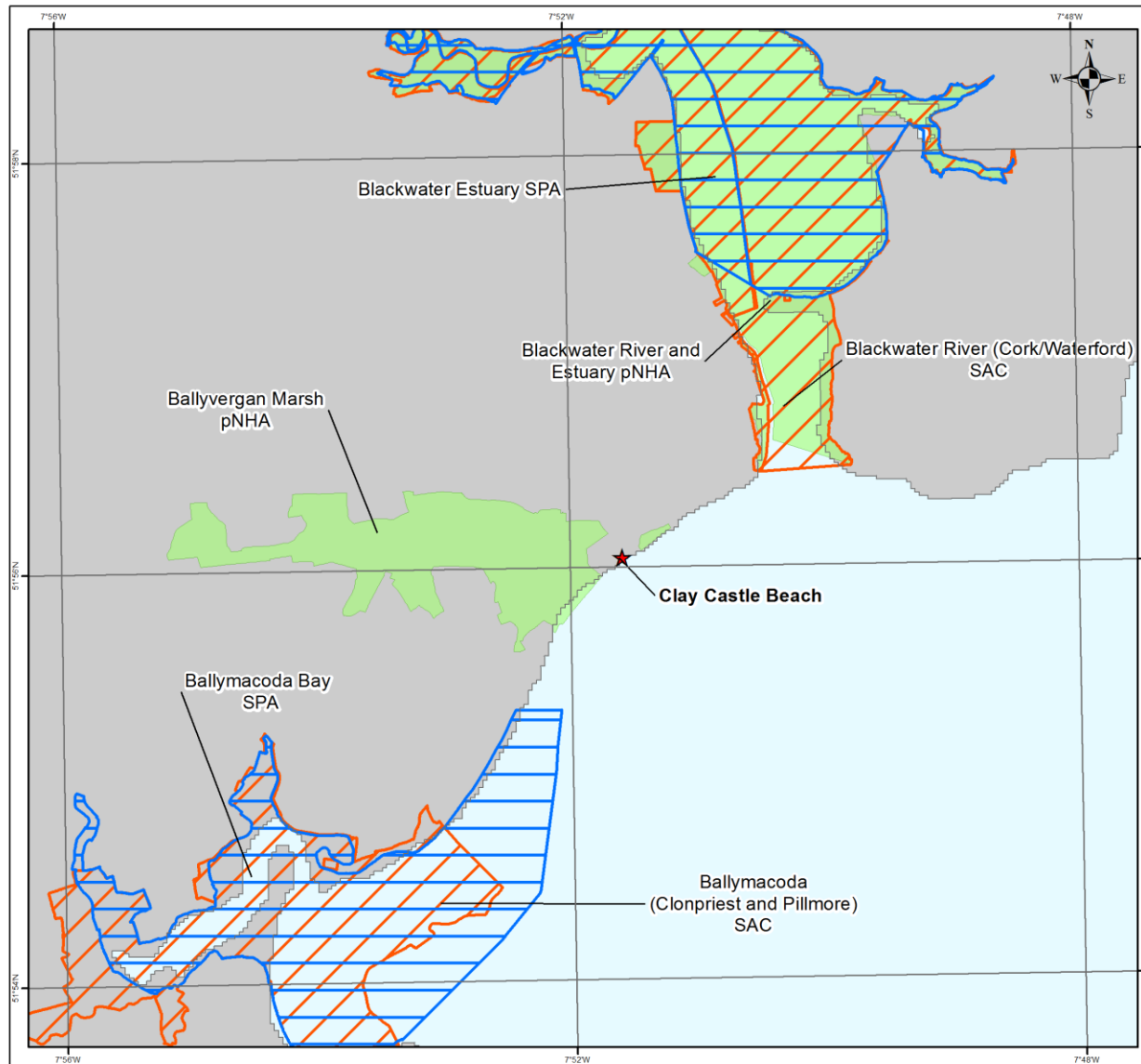
- SPA
- Proposed Natural Heritage Area

NOTE: Not to be used for Navigation

<b>Date</b>	Thursday, June 12, 2014 10:44:36
<b>Projection</b>	WGS_1984_UTM_Zone_29N
<b>Spheroid</b>	WGS_1984
<b>Datum</b>	D_WGS_1984
<b>Data Source</b>	DECC, NPWS, SZ
<b>File Reference</b>	J:\P1812\Mxd\Land_Report\Figure_4_36_Ballinwilling_Strand_Env_Constraints_v1.mxd
<b>Created By</b>	Ian Charlton
<b>Reviewed By</b>	Emma White
<b>Approved By</b>	Jenny Austin

Valued Quality. Delivered.

0 0.25 0.5 1 1.5 2 2.5 Kilometers 1:66,000  
© 2014 All rights reserved.



© SeaZone Solutions, 2013, [SZ Licence Number: 102013.109] © British Crown Copyright, 2013. All rights reserved.

### Celtic Interconnector

Protected Sites within 10km of  
Clay Castle Beach project site

**Legend**

- ★ Landing Point

**Protected Areas**

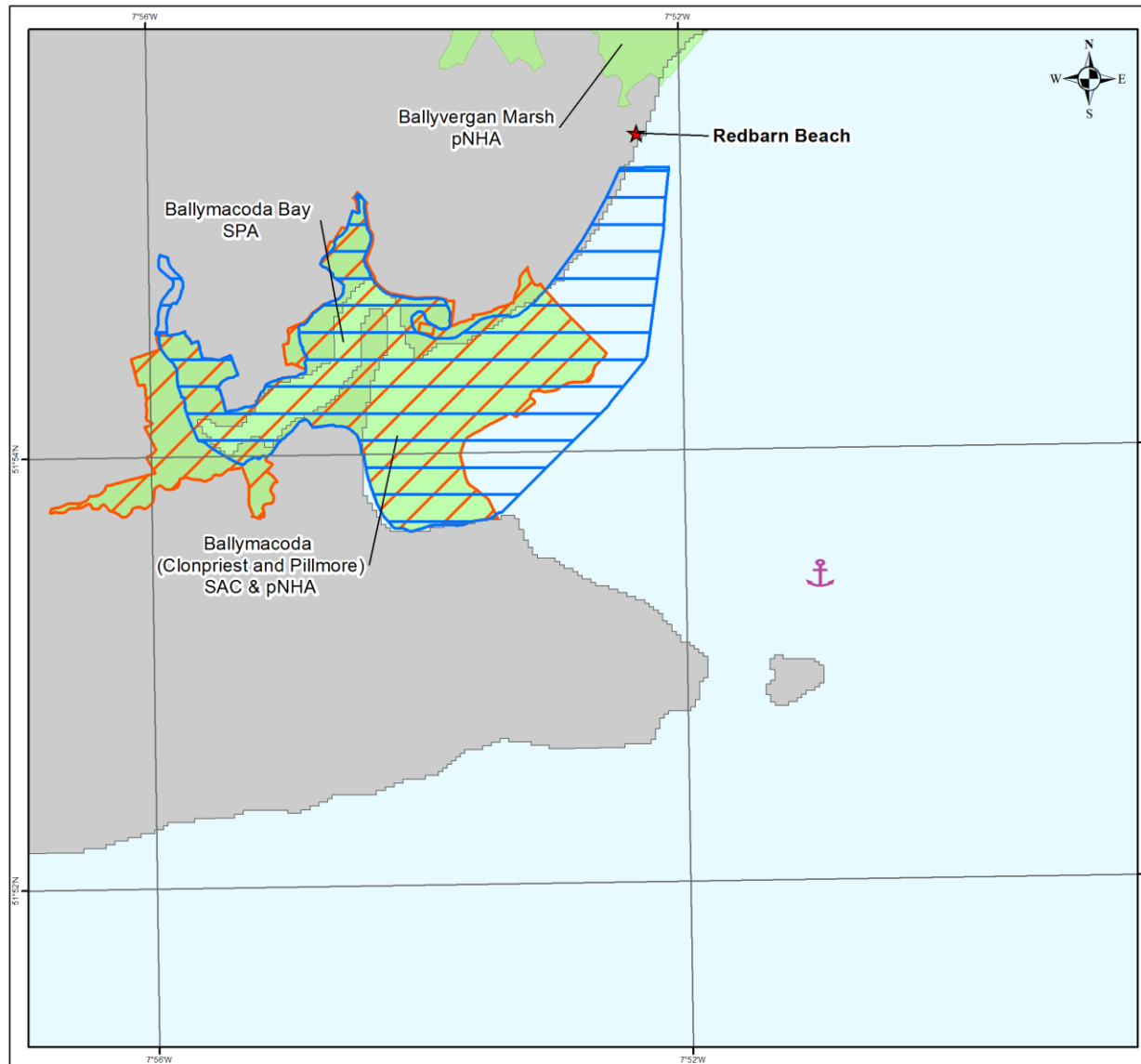
- SPA
- SAC
- Proposed Natural Heritage Area

NOTE: Not to be used for Navigation

Date	Thursday, June 12, 2014 10:55:52
Projection	WGS_1984_UTM_Zone_29N
Spheroid	WGS_1984
Datum	D_WGS_1984
Data Source	DECC, NPWS, SZ
File Reference	J:\P1812\Mxd\Land_Report\Figure_4_61_Clay_Castle_Beach_Env_Constraints_v1.mxd
Created By	Ian Charlton
Reviewed By	Emma White
Approved By	Jenny Austin

Valued Quality. Delivered.

© Metrix Ltd, 2014. All rights reserved.



© SeaZone Solutions, 2013, [SZ Licence Number: 102013.109] © British Crown Copyright, 2013. All rights reserved

### Celtic Interconnector

Protected Sites within 10km of Redbarn Beach project site

**Legend**

- ★ Landing Point

**Infrastructure**

- ⚓ Anchorage area

**Protected Areas**

- SPA
- SAC
- Proposed Natural Heritage Area

NOTE: Not to be used for Navigation

Date	Thursday, June 12, 2014 10:49:42
Projection	WGS_1984_UTM_Zone_29N
Spheroid	WGS_1984
Datum	D_WGS_1984
Data Source	DECC, NPWS, SZ
File Reference	J:\P1812\Mxd\Land_Report\Figure_4_48_Redbarn_Beach_Env_Constraints_v1.mxd
Created By	Ian Charlton
Reviewed By	Emma White
Approved By	Jenny Austin

0 0.25 0.5 1 1.5 2 km © Metrix Ltd, 2014. All rights reserved.