

ATTACHMENT H: PRE-APPLICATION CONSULTATION



Celtic Interconnector

Pre-Application Consultation

In support of foreshore licence application FS006811 for geotechnical and environmental survey works

December 2017



Co-financed by the European Union

Connecting Europe Facility

The sole responsibility of this publication lies with the author. The European Union is not responsible for any use that may be made of the information contained therein.

1 SUMMARY OF CONSULTATION WITH THIRD PARTIES

EirGrid previously established contact with relevant third parties as part of the application process for the previous foreshore licence applications for the Celtic Interconnector project (FS 006243, FS 006446 and FS 006722). As part of this process specific requirements for the previous geotechnical and environmental survey (FS 006446) were discussed and clarified and a summary of the consultation carried out can be found at:

<http://www.housing.gov.ie/sites/default/files/migrated-files/en/Foreshore/ApplicationsandDeterminations/EirGridPLCCorkSIWorks/SupportingDocumentation/FileDownload%2C39938%2Cen.pdf>

In preparation for the current geotechnical and environmental survey foreshore licence application (FS 006811) EirGrid has established contact with the following bodies:

- Cork County Council
- Department of Agriculture, Food and the Marine
- Department of Arts, Heritage, Regional, Rural and Gaeltacht Affairs (Development Applications Unit covering NPWS and UAU)
- Inland Fisheries Ireland
- Marine Institute
- Marine Survey Office
- Sea Fisheries Protection Authority

A copy of the correspondence sent to each body has been included below.



David Clarke,
Senior Executive Engineer,
Roads Operations,
Cork County Council,
The Lodge,
Youghal Road,
Middleton,
Co. Cork,
P25 TF98.

www.eirgrid.com
The Oval, 160 Shelbourne Road
Ballsbridge, Dublin D04 FW28, Ireland
Telephone +353 1 677 1700
Email info@eirgrid.com

8th December 2017

Celtic Interconnector Marine Surveys

Dear Mr. Clarke,

The Celtic Interconnector PCI project is being jointly developed by the two national Transmission System Operators, EirGrid in Ireland and its French counterpart, RTE (Réseau de transport d'électricité) to explore the feasibility of building a submarine electricity interconnector between Ireland and France. The interconnector would be a high voltage direct current (HVDC) circuit and have a capacity of approximately 700 megawatts (MW). An Ireland-France interconnector would, if developed, run between the South coast of Ireland and the North West coast of France, and would comprise a total cable length of approximately 600 kilometres. The Celtic Interconnector project has also received grant funding from the EU under the Connecting Europe Facility.

As you may be aware, we completed a feasibility study of a marine route between Ireland and France in 2016. As part of this study, geophysical and geotechnical / environmental marine surveys were undertaken along a route corridor between east Cork in Ireland and Brittany in France during 2014 and 2015. These surveys were carried out under two separate foreshore licences and following a review of the findings, EirGrid decided to carry out further geophysical, geotechnical and environmental marine surveys to provide additional options for the proposed cable and to avoid areas of challenging geology that was identified on the approach to the east Cork coast. These additional options consist of:

- a route following a slightly different approach route to the Ballinwilling landfall point (previously surveyed in 2014 and 2015), and
- a route to new landfall points at Redbarn and Claycastle beaches to the south of Youghal.

EirGrid successfully carried out the first phase of geophysical surveys of the aforementioned route options in October 2017, under foreshore licence FS 006722, to which your department was a prescribed consultee. EirGrid now intend to carry out the second phase of geotechnical and environmental surveys of these same routes in May 2018, as shown in Figure 1 overleaf. We are working to a tight programme for these surveys and intend to apply for a foreshore licence later this month, i.e. December 2017, and are therefore writing to you now in order to clarify our approach in advance. We expect that the Foreshore Unit will contact you in relation to our new application in the near future and we hope that the information we have provided may assist with the timely return of observations from prescribed consultees to the application process.

As you may recall, when the Roads Operations Department of Cork County Council were previously contacted in January 2015 by the Foreshore Unit for observations on our previous geotechnical and environmental survey application (FS006446) the Roads Operations Department responded as follows:

DIRECTORS

John O'Connor
Chairman

Dr Joan Smyth
Deputy Chair

Fintan Slye
Chief Executive

Shane Brennan

Lynne Crowther

Dr Theresa Donaldson

Michael Hand

Eileen Maher

Liam O'Halloran

John Trethowan

Tom Finn
Company Secretary

EirGrid Plc
The Oval
160 Shelbourne Road
Ballsbridge
Dublin D04 FW28
Ireland

Company Registration
No. 338522

“Both Ballinwilling Strand and Ballycreeeen Beach are used by members of the public as a beach amenity and have attendant public carparks maintained by Cork County Council. The proposed intertidal survey should be carried out on weekdays only, and then not during periods of high activity that will occur during any periods of hot summer weather.

The Applicant shall notify relevant Council Departments in advance of the survey works – i.e. East Cork Municipal District; District Services South Cork (Beach Management) and Environment Department.

The Applicant should be advised that the main access to the beach at Ballinwilling Strand was damaged in the winter storms of 2014 and can confirm the availability of this access with the Youghal Area Office in advance of the proposed survey.”

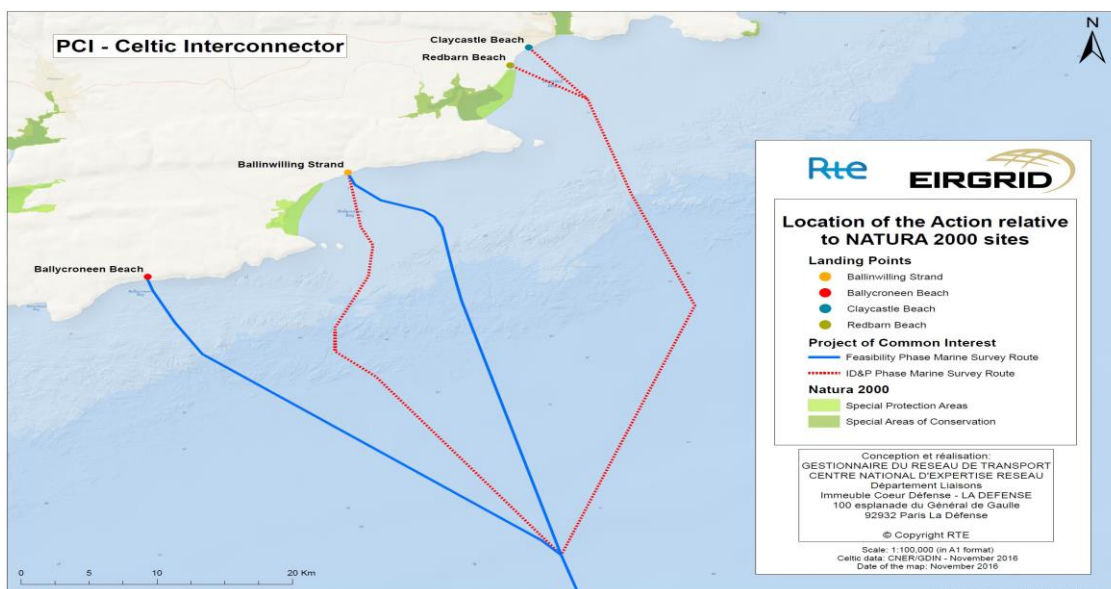


Figure 1 - Marine Survey Routes in East Cork (blue lines surveyed previously and red lines are new routes)

We can confirm that the proposed geotechnical and environmental surveys in 2018 are identical in nature and methodology to those undertaken in 2015 and only differ in location as indicated on the map in Figure 1 above. We can also confirm that as per the previous surveys we will provide notification to relevant departments of Cork County Council in advance of the survey works commencing and will endeavour to avoid carrying out the works during periods of high activity on the beaches or hot summer weather. Further to the commitment given by EirGrid at the East Cork Municipal District meeting of 6th November 2017, we will ensure that notification will be given to East Cork Municipal District; District Services South Cork (Beach Management) and Environment Department in advance of the works.

Please do not hesitate to contact me should you require any further information on the project.

Yours sincerely,



Eoghan Tuite
Senior Project Engineer
Grid Development and Interconnection

Celtic Interconnector Project



Co-financed by the European Union
Connecting Europe Facility



Joan Dineen,
Executive Engineer,
Coastal Management & Flood Protection Section,
Cork County Council,
Floor 10,
County Hall,
Carrigrohane Road,
Cork,
T12 R2NC.

www.eirgrid.com
The Oval, 160 Shelbourne Road
Ballsbridge, Dublin D04 FW28, Ireland
Telephone +353 1 677 1700
Email info@eirgrid.com

8th December 2017

Celtic Interconnector Marine Surveys

Dear Ms. Dineen,

The Celtic Interconnector PCI project is being jointly developed by the two national Transmission System Operators, EirGrid in Ireland and its French counterpart, RTE (Réseau de transport d'électricité) to explore the feasibility of building a submarine electricity interconnector between Ireland and France. The interconnector would be a high voltage direct current (HVDC) circuit and have a capacity of approximately 700 megawatts (MW). An Ireland-France interconnector would, if developed, run between the South coast of Ireland and the North West coast of France, and would comprise a total cable length of approximately 600 kilometres. The Celtic Interconnector project has also received grant funding from the EU under the Connecting Europe Facility.

As you may be aware, we completed a feasibility study of a marine route between Ireland and France in 2016. As part of this study, geophysical and geotechnical / environmental marine surveys were undertaken along a route corridor between east Cork in Ireland and Brittany in France during 2014 and 2015. These surveys were carried out under two separate foreshore licences and following a review of the findings, EirGrid decided to carry out further geophysical, geotechnical and environmental marine surveys to provide additional options for the proposed cable and to avoid areas of challenging geology that was identified on the approach to the east Cork coast. These additional options consist of:

- a route following a slightly different approach route to the Ballinwilling landfall point (previously surveyed in 2014 and 2015), and
- a route to new landfall points at Redbarn and Claycastle beaches to the south of Youghal.

EirGrid successfully carried out the first phase of geophysical surveys of the aforementioned route options in October 2017, under foreshore licence FS 006722, to which your department was a prescribed consultee. EirGrid now intend to carry out the second phase of geotechnical and environmental surveys of these same routes in May 2018, as shown in Figure 1 overleaf. We are working to a tight programme for these surveys and intend to apply for a foreshore licence later this month, i.e. December 2017, and are therefore writing to you now in order to clarify our approach in advance. We expect that the Foreshore Unit will contact you in relation to our new application in the near future and we hope that the information we have provided may assist with the timely return of observations from prescribed consultees to the application process.

As you may recall, when the Coastal Management and Flood Protection Section of Cork County Council were previously contacted in January 2015 by the Foreshore Unit for observations on our previous geotechnical and environmental survey application (FS006446) the Coastal Management and Flood Protection Section responded as follows:

DIRECTORS

John O'Connor
Chairman

Dr Joan Smyth
Deputy Chair

Fintan Slye
Chief Executive

Shane Brennan

Lynne Crowther

Dr Theresa Donaldson

Michael Hand

Eileen Maher

Liam O'Halloran

John Trethowan

Tom Finn
Company Secretary

EirGrid Plc
The Oval
160 Shelbourne Road
Ballsbridge
Dublin D04 FW28
Ireland
Company Registration
No. 338522

“Ballinwilling Strand and Ballycreeeen Beach are both used by the public, in particular at the weekends. Therefore it is suggested that the survey works should take place on weekdays only. Also any vehicles &/or plant used by the Applicant should not interfere with the public use of the beaches or adjacent carparks.

Following the severe storms at the start of 2014 the access to Ballinwilling Strand was damaged. The Applicant will need to assess their access arrangements prior to the commencement of the survey.

The Applicant shall give advance notice to Cork County Council of the commencement of the survey works. Departments to be notified include Roads, Environments and Coastal Management & Flood Protection.”

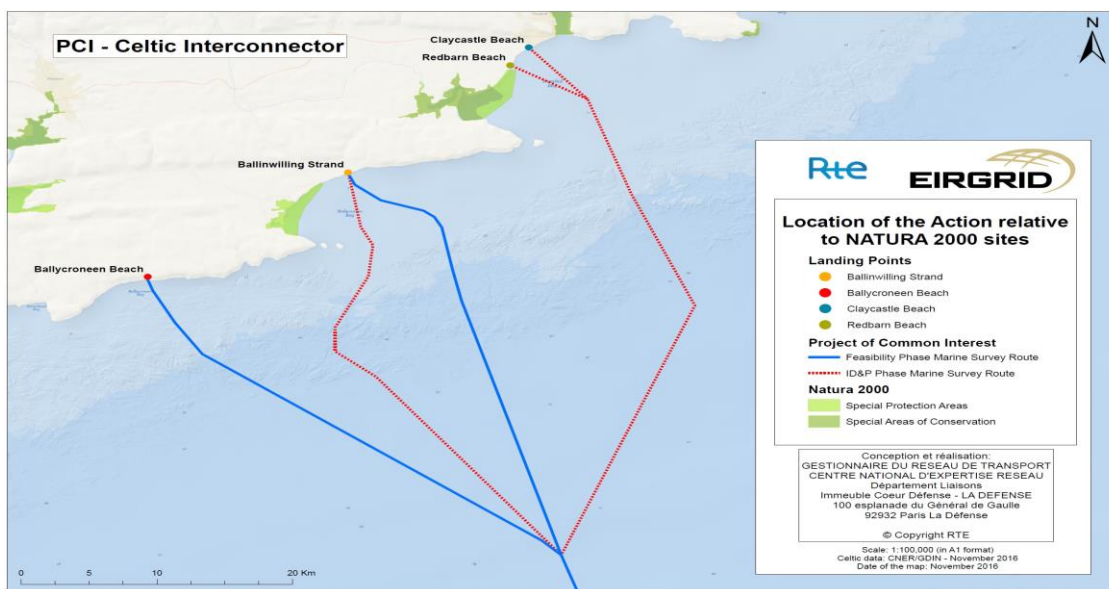


Figure 1 - Marine Survey Routes in East Cork (blue lines surveyed previously and red lines are new routes)

We can confirm that the proposed geotechnical and environmental surveys in 2018 are identical in nature and methodology to those undertaken in 2015 and only differ in location as indicated on the map in Figure 1 above. We can also confirm that as per the previous surveys we will provide notification to relevant departments of Cork County Council in advance of the survey works commencing and will endeavour to avoid carrying out the works during periods of high activity on the beaches or hot summer weather. Further to the commitment given by EirGrid at the East Cork Municipal District meeting of 6th November 2017, we will ensure that notification will be given to the Roads, Environments and Coastal Management & Flood Protection Department in advance of the works.

Please do not hesitate to contact me should you require any further information on the project.

Yours sincerely,



Eoghan Tuite
Senior Project Engineer
Grid Development and Interconnection

Celtic Interconnector Project



Co-financed by the European Union
Connecting Europe Facility



Deirdre O'Flynn,
Foreshore Co-ordination Unit,
Aquaculture & Foreshore Management Division,
Department of Agriculture, Food and the Marine,
Clogheen,
Clonakilty,
Co. Cork,
P85 TX47.

www.eirgrid.com
The Oval, 160 Shelbourne Road
Ballsbridge, Dublin D04 FW28, Ireland
Telephone +353 1 677 1700
Email info@eirgrid.com

8th December 2017

Celtic Interconnector Marine Surveys

Dear Ms. O'Flynn,

The Celtic Interconnector PCI project is being jointly developed by the two national Transmission System Operators, EirGrid in Ireland and its French counterpart, RTE (Réseau de transport d'électricité) to explore the feasibility of building a submarine electricity interconnector between Ireland and France. The interconnector would be a high voltage direct current (HVDC) circuit and have a capacity of approximately 700 megawatts (MW). An Ireland-France interconnector would, if developed, run between the South coast of Ireland and the North West coast of France, and would comprise a total cable length of approximately 600 kilometres. The Celtic Interconnector project has also received grant funding from the EU under the Connecting Europe Facility.

As you may be aware, we completed a feasibility study of a marine route between Ireland and France in 2016. As part of this study, geophysical and geotechnical / environmental marine surveys were undertaken along a route corridor between east Cork in Ireland and Brittany in France during 2014 and 2015. These surveys were carried out under two separate foreshore licences and following a review of the findings, EirGrid decided to carry out further geophysical, geotechnical and environmental marine surveys to provide additional options for the proposed cable and to avoid areas of challenging geology that was identified on the approach to the east Cork coast. These additional options consist of:

- a route following a slightly different approach route to the Ballinwilling landfall point (previously surveyed in 2014 and 2015), and
- a route to new landfall points at Redbarn and Claycastle beaches to the south of Youghal.

EirGrid successfully carried out the first phase of geophysical surveys of the aforementioned route options in October 2017, under foreshore licence FS 006722, to which your department was a prescribed consultee. EirGrid now intend to carry out the second phase of geotechnical and environmental surveys of these same routes in May 2018, as shown in Figure 1 overleaf. We are working to a tight programme for these surveys and intend to apply for a foreshore licence later this month, i.e. December 2017, and are therefore writing to you now in order to clarify our approach in advance. We expect that the Foreshore Unit will contact you in relation to our new application in the near future and we hope that the information we have provided may assist with the timely return of observations from prescribed consultees to the application process.

As you may recall, when the Department of Agriculture, Food and the Marine were previously contacted in January 2015 by the Foreshore Unit for observations on our previous geotechnical and environmental survey application (FS006446) the Department of Agriculture, Food and the Marine responded as follows:

DIRECTORS

John O'Connor
Chairman

Dr Joan Smyth
Deputy Chair

Fintan Slye
Chief Executive

Shane Brennan

Lynne Crowther

Dr Theresa Donaldson

Michael Hand

Eileen Maher

Liam O'Halloran

John Trethowan

Tom Finn
Company Secretary

EirGrid Plc
The Oval

160 Shelbourne Road
Ballsbridge
Dublin D04 FW28
Ireland

Company Registration
No. 338522

“There are no impacts on fishery harbours due to the proposed studies. There may be some interaction with fishing activity along the proposed routes but this will be limited in scale and duration and the Department is of the view that such interaction will not be significant.

There are a number of aquaculture applications on file for oyster cultivation at Ballynamona Ballycotton, which are located to the west of the Ballinwilling Strand study area in Ballycotton Bay. There are no impacts on aquaculture due to this proposed works.

It is recommended that prior to the commencement of the surveys that the applicant be required to arrange the publication of a marine notice giving general description of operations and approximate dates of commencement and completion.

Given the nature, scale and location of the proposed surveys the Department is satisfied that they will not have a significant impact on the marine environment in the study area and will not interfere with other legitimate users of the area. The Department has no objections to a permit being issued.”

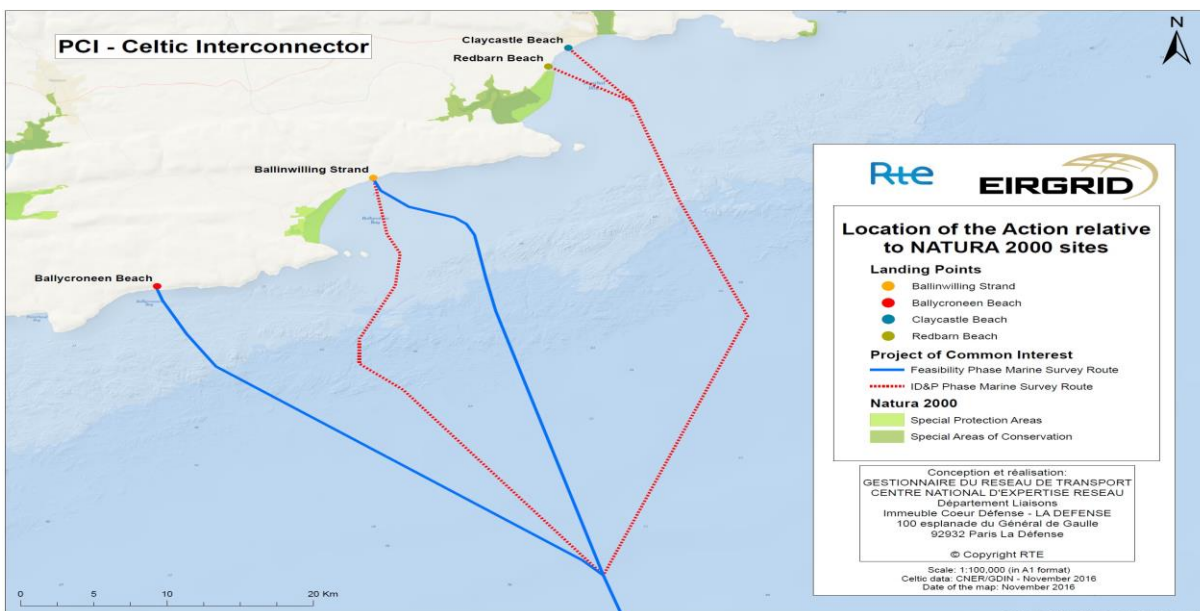


Figure 1 - Marine Survey Routes in East Cork (blue lines surveyed previously and red lines are new routes)

We can confirm that the proposed geotechnical and environmental surveys in 2018 are identical in nature and methodology to those undertaken in 2015 and only differ in location as indicated on the map in Figure 1 above. We have also appointed a Fisheries Liaison Officer for the additional survey works and would be more than happy to provide details of such to the Sea Fisheries Protection Authority if requested to do so.

Please do not hesitate to contact me should you require any further information on the project.

Yours sincerely,



Eoghan Tuite
Senior Project Engineer
Grid Development and Interconnection

Celtic Interconnector Project



Co-financed by the European Union
Connecting Europe Facility



The Manager,
Development Applications Unit,
Department of Arts, Heritage, Regional, Rural and Gaeltacht Affairs,
Newtown Road,
Wexford,
Y35 AP90.

www.eirgrid.com
The Oval, 160 Shelbourne Road
Ballsbridge, Dublin D04 FW28, Ireland
Telephone +353 1 677 1700
Email info@eirgrid.com

8th December 2017

Celtic Interconnector Marine Surveys

To whom it concerns,

The Celtic Interconnector PCI project is being jointly developed by the two national Transmission System Operators, EirGrid in Ireland and its French counterpart, RTE (Réseau de transport d'électricité) to explore the feasibility of building a submarine electricity interconnector between Ireland and France. The interconnector would be a high voltage direct current (HVDC) circuit and have a capacity of approximately 700 megawatts (MW). An Ireland-France interconnector would, if developed, run between the South coast of Ireland and the North West coast of France, and would comprise a total cable length of approximately 600 kilometres. The Celtic Interconnector project has also received grant funding from the EU under the Connecting Europe Facility.

As you may be aware, we completed a feasibility study of a marine route between Ireland and France in 2016. As part of this study, geophysical and geotechnical / environmental marine surveys were undertaken along a route corridor between east Cork in Ireland and Brittany in France during 2014 and 2015. These surveys were carried out under two separate foreshore licences and following a review of the findings, EirGrid decided to carry out further geophysical, geotechnical and environmental marine surveys to provide additional options for the proposed cable and to avoid areas of challenging geology that was identified on the approach to the east Cork coast. These additional options consist of:

- a route following a slightly different approach route to the Ballinwilling landfall point (previously surveyed in 2014 and 2015), and
- a route to new landfall points at Redbarn and Claycastle beaches to the south of Youghal.

EirGrid successfully carried out the first phase of geophysical surveys of the aforementioned route options in October 2017, under foreshore licence FS 006722, to which your department was a prescribed consultee. EirGrid now intend to carry out the second phase of geotechnical and environmental surveys of these same routes in May 2018, as shown in Figure 1 overleaf. We are working to a tight programme for these surveys and intend to apply for a foreshore licence later this month, i.e. December 2017, and are therefore writing to you now in order to clarify our approach in advance. We expect that the Foreshore Unit will contact you in relation to our new application in the near future and we hope that the information we have provided may assist with the timely return of observations from prescribed consultees to the application process.

As you may recall, when the Development Applications Unit was previously contacted in January 2015 by the Foreshore Unit for observations on our previous geotechnical and environmental survey application (FS006446) the response included input from the Underwater Archaeology Unit (UAU) and from the National Parks and Wildlife Service (NPWS). The methodology for the proposed 2018 surveys will take account of all previous observations and conditions and we can confirm the following with respect to Marine Cultural Heritage and Nature Conservation.

DIRECTORS

John O'Connor
Chairman

Dr Joan Smyth
Deputy Chair

Fintan Slye
Chief Executive

Shane Brennan

Lynne Crowther

Dr Theresa Donaldson

Michael Hand

Eileen Maher

Liam O'Halloran

John Trethowan

Tom Finn
Company Secretary

*EirGrid Plc
The Oval
160 Shelbourne Road
Ballsbridge
Dublin D04 FW28
Ireland*

*Company Registration
No. 338522*

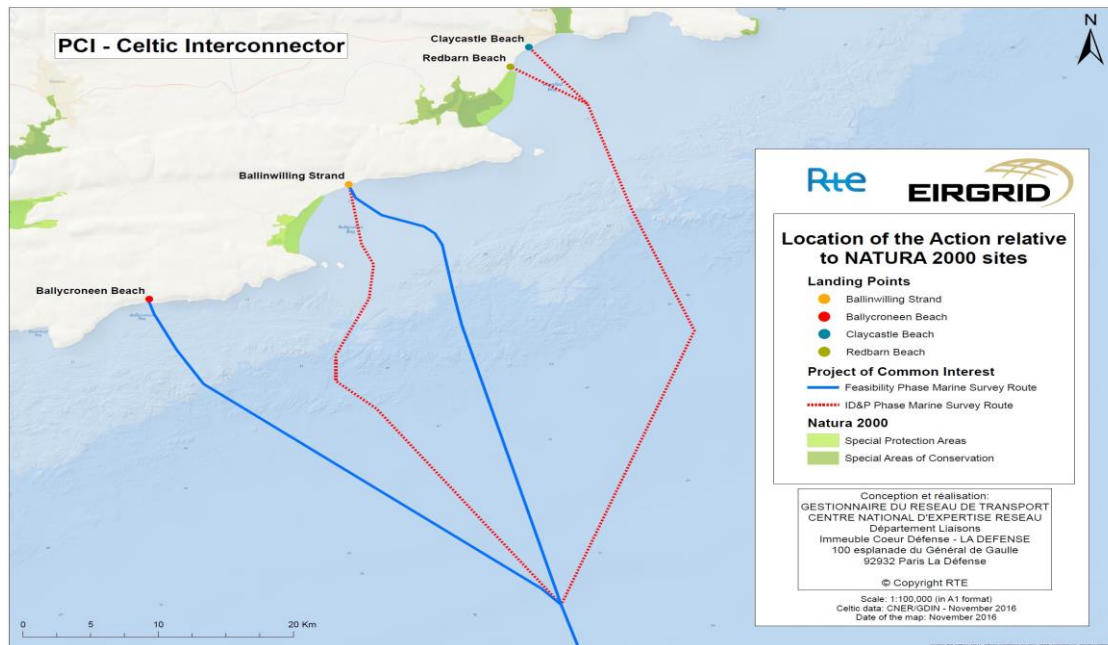


Figure 1 - Marine Survey Routes in East Cork (blue lines surveyed previously and red lines are new routes)

Marine Cultural Heritage:

Previous observations and recommendations from the Underwater Archaeology Unit (1st April 2015) included the requirement for an archaeological review of the results of all geotechnical investigations.

EirGrid can confirm that Mr. Michael Walsh (now of Cotswold Archaeology) who carried out the archaeological assessments of the previous surveys has been retained for both the geophysical and geotechnical elements of the current surveys. The updated desk based assessment which includes the new landfall points will be issued by email, separately to this letter, for your review. The archaeological review of the geophysical survey data is currently underway and the report (which includes the walkover survey results) will be issued to the Underwater Archaeology Unit for review when it is available early next year. A geo-archaeological assessment of all of the vibrocore logs from the geotechnical survey will also be undertaken by Cotswold Archaeology and the results of this assessment will be issued to the Underwater Archaeology Unit following the completion of the geotechnical survey.

Nature Conservation:

The foreshore license application will be accompanied by a report to inform Screening for Appropriate Assessment and a Marine Mammal Risk Assessment.

We welcome the opportunity to discuss the proposed marine survey and the overall project with you.

Please do not hesitate to contact me directly should you require any further information on the project.

Yours sincerely,



Dr Maeve Flynn
Senior Lead Ecologist
Grid Development and Interconnection

Celtic Interconnector Project



Co-financed by the European Union
Connecting Europe Facility

Dr. James King,
Inland Fisheries Ireland,
Swords Business Campus,
Swords,
Co. Dublin.

www.eirgrid.com
The Oval, 160 Shelbourne Road
Ballsbridge, Dublin D04 FW28, Ireland
Telephone +353 1 677 1700
Email info@eirgrid.com

8th December 2017

Celtic Interconnector Marine Surveys

Dear Dr King,

The Celtic Interconnector PCI project is being jointly developed by the two national Transmission System Operators, EirGrid in Ireland and its French counterpart, RTE (Réseau de transport d'électricité) to explore the feasibility of building a submarine electricity interconnector between Ireland and France. The interconnector would be a high voltage direct current (HVDC) circuit and have a capacity of approximately 700 megawatts (MW). An Ireland-France interconnector would, if developed, run between the South coast of Ireland and the North West coast of France, and would comprise a total cable length of approximately 600 kilometres. The Celtic Interconnector project has also received grant funding from the EU under the Connecting Europe Facility.

As you may be aware, we completed a feasibility study of a marine route between Ireland and France in 2016. As part of this study, geophysical and geotechnical / environmental marine surveys were undertaken along a route corridor between east Cork in Ireland and Brittany in France during 2014 and 2015. These surveys were carried out under two separate foreshore licences and following a review of the findings, EirGrid decided to carry out further geophysical, geotechnical and environmental marine surveys to provide additional options for the proposed cable and to avoid areas of challenging geology that was identified on the approach to the east Cork coast. These additional options consist of:

- a route following a slightly different approach route to the Ballinwilling landfall point (previously surveyed in 2014 and 2015), and
- a route to new landfall points at Redbarn and Claycastle beaches to the south of Youghal.

EirGrid successfully carried out the first phase of geophysical surveys of the aforementioned route options in October 2017, under foreshore licence FS 006722, to which your department was a prescribed consultee. EirGrid now intend to carry out the second phase of geotechnical and environmental surveys of these same routes in May 2018, as shown in Figure 1 overleaf. We are working to a tight programme for these surveys and intend to apply for a foreshore licence later this month, i.e. December 2017, and are therefore writing to you now in order to clarify our approach in advance. We expect that the Foreshore Unit will contact you in relation to our new application in the near future and we hope that the information we have provided may assist with the timely return of observations from prescribed consultees to the application process.

As you may recall, when Inland Fisheries Ireland was previously contacted in January 2015 by the Foreshore Unit for observations on our previous geotechnical and environmental survey application (FS006446), IFI responded with a detailed submission (14/01/2015) which included queries on the duration of drilling, number of test sites per day and range of sound dispersal to which EirGrid responded with clarifications (Intertek, 10/02/2015). EirGrid can confirm that the proposed geotechnical and environmental surveys in 2018 are identical in nature and methodology to those undertaken in 2015 and that the previous clarifications provided to IFI also apply to the additional surveys.

DIRECTORS

John O'Connor
Chairman

Dr Joan Smyth
Deputy Chair

Fintan Slye
Chief Executive

Shane Brennan

Lynne Crowther

Dr Theresa Donaldson

Michael Hand

Eileen Maher

Liam O'Halloran

John Trethowan

Tom Finn
Company Secretary

EirGrid Plc
The Oval
160 Shelbourne Road
Ballsbridge
Dublin D04 FW28
Ireland
Company Registration
No. 338522

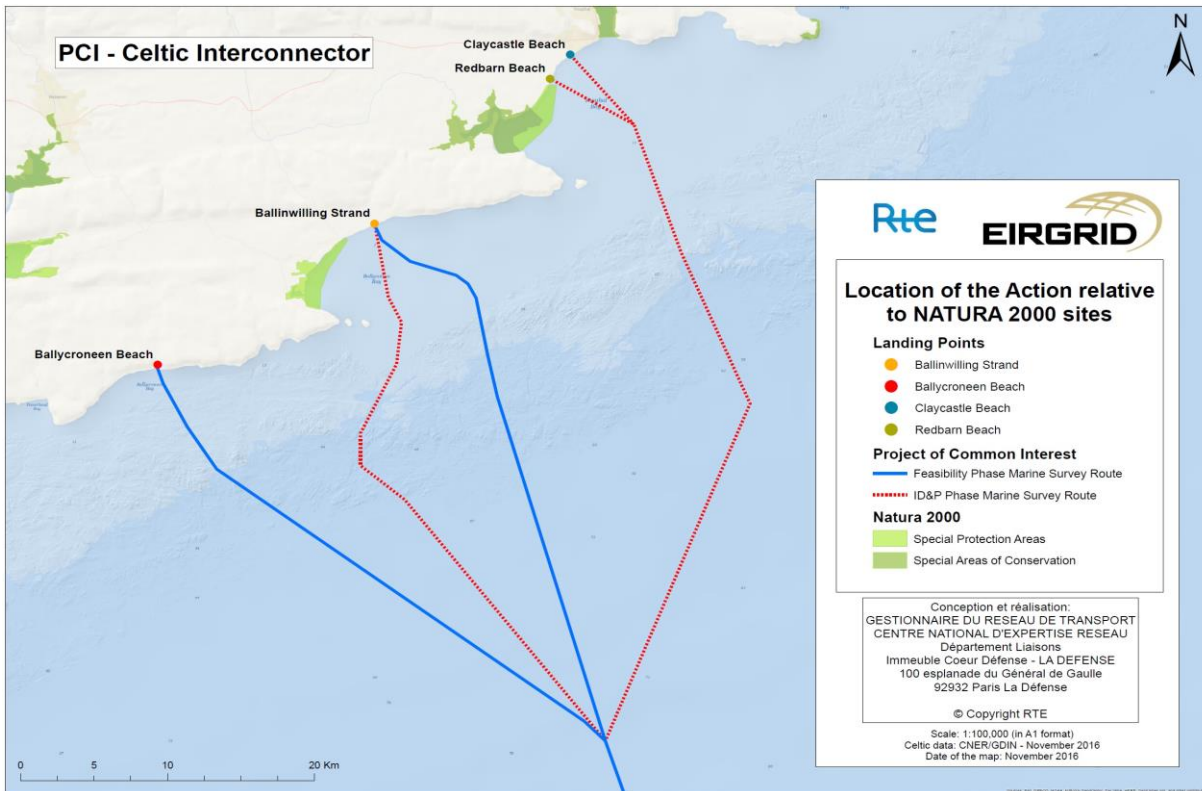


Figure 1 - Marine Survey Routes in East Cork (blue lines surveyed previously and red lines are new routes)

The foreshore license application will be accompanied by a report to inform Screening for Appropriate Assessment and a Marine Mammal Risk Assessment. We have taken account of all previous conditions and observations and can confirm that the survey operations should not cause any measurable disruption to leisure and sport angling activities. The survey of the corridors options is expected to take approximately 10-15 days, dependant on weather conditions. The physical presence of the survey vessel, which will be moving, will have a very localised and temporary effect on any chartered fishing activity in the survey area that may be within the survey vessel transect. We can confirm that as for the previous survey, a fisheries liaison officer has been appointed.

We welcome the opportunity to discuss the proposed marine survey and the overall project with you.

Please do not hesitate to contact me directly should you require any further information on the project.

Yours sincerely,



Dr Maeve Flynn
Senior Lead Ecologist
Grid Development and Interconnection

Celtic Interconnector Project



Co-financed by the European Union
Connecting Europe Facility



Dr. Terry McMahon,
Section Manager,
Marine Environment and Food Safety Services,
Marine Institute,
80 Harcourt Street,
Dublin 2.

www.eirgrid.com
The Oval, 160 Shelbourne Road
Ballsbridge, Dublin D04 FW28, Ireland
Telephone +353 1 677 1700
Email info@eirgrid.com

8th December 2017

Celtic Interconnector Marine Surveys

Dear Dr. McMahon,

The Celtic Interconnector PCI project is being jointly developed by the two national Transmission System Operators, EirGrid in Ireland and its French counterpart, RTE (Réseau de transport d'électricité) to explore the feasibility of building a submarine electricity interconnector between Ireland and France. The interconnector would be a high voltage direct current (HVDC) circuit and have a capacity of approximately 700 megawatts (MW). An Ireland-France interconnector would, if developed, run between the South coast of Ireland and the North West coast of France, and would comprise a total cable length of approximately 600 kilometres. The Celtic Interconnector project has also received grant funding from the EU under the Connecting Europe Facility.

As you may be aware, we completed a feasibility study of a marine route between Ireland and France in 2016. As part of this study, geophysical and geotechnical / environmental marine surveys were undertaken along a route corridor between east Cork in Ireland and Brittany in France during 2014 and 2015. These surveys were carried out under two separate foreshore licences and following a review of the findings, EirGrid decided to carry out further geophysical, geotechnical and environmental marine surveys to provide additional options for the proposed cable and to avoid areas of challenging geology that was identified on the approach to the east Cork coast. These additional options consist of:

- a route following a slightly different approach route to the Ballinwilling landfall point (previously surveyed in 2014 and 2015), and
- a route to new landfall points at Redbarn and Claycastle beaches to the south of Youghal.

EirGrid successfully carried out the first phase of geophysical surveys of the aforementioned route options in October 2017, under foreshore licence FS 006722, to which your department was a prescribed consultee. EirGrid now intend to carry out the second phase of geotechnical and environmental surveys of these same routes in May 2018, as shown in Figure 1 overleaf. We are working to a tight programme for these surveys and intend to apply for a foreshore licence later this month, i.e. December 2017, and are therefore writing to you now in order to clarify our approach in advance. We expect that the Foreshore Unit will contact you in relation to our new application in the near future and we hope that the information we have provided may assist with the timely return of observations from prescribed consultees to the application process.

As you may recall, when the Marine Institute were previously contacted in January 2015 by the Foreshore Unit for observations on our previous geotechnical and environmental survey application (FS006446) the Marine Institute responded as follows:

DIRECTORS

John O'Connor
Chairman

Dr Joan Smyth
Deputy Chair

Fintan Slye
Chief Executive

Shane Brennan

Lynne Crowther

Dr Theresa Donaldson

Michael Hand

Eileen Maher

Liam O'Halloran

John Trethowan

Tom Finn
Company Secretary

EirGrid Plc
The Oval
160 Shelbourne Road
Ballsbridge
Dublin D04 FW28
Ireland
Company Registration
No. 338522

“Given the nature, scale and location of the proposed site investigations the Marine Institute is satisfied that they will not have a significant impact on the marine environment in the study area and will not interfere with other legitimate users of the area. The Marine Institute has no objections to a permit being issued.”

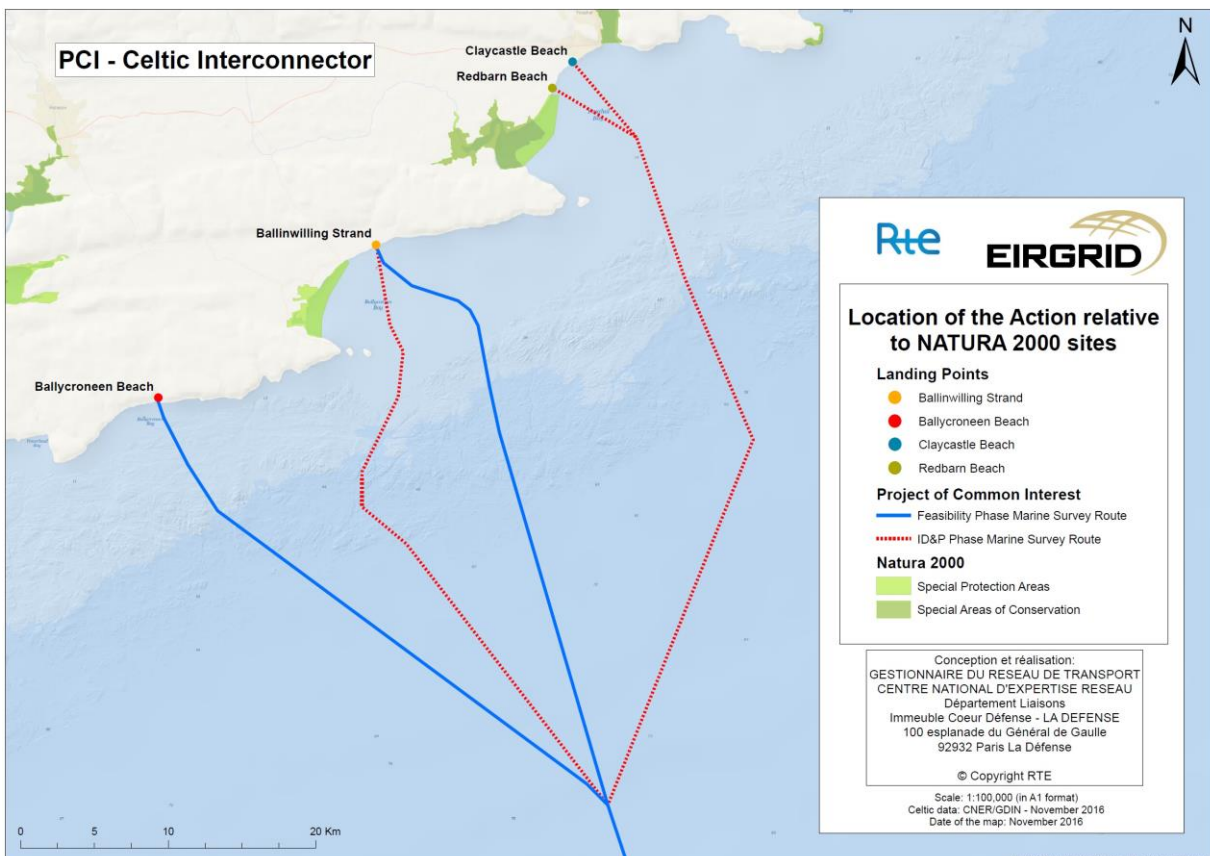


Figure 1 - Marine Survey Routes in East Cork (blue lines surveyed previously and red lines are new routes)

We can confirm that the proposed geotechnical and environmental surveys in 2018 are identical in nature and methodology to those undertaken in 2015 and only differ in location as indicated on the map in Figure 1 above.

Please do not hesitate to contact me should you require any further information on the project.

Yours sincerely,



Eoghan Tuite
Senior Project Engineer
Grid Development and Interconnection

Celtic Interconnector Project



Co-financed by the European Union
Connecting Europe Facility



Capt. Nick W. Cantwell,
Nautical Surveyor,
Marine Survey Office,
Ballyshannon T.C.,
Abbey View House,
Ballyshannon,
Co. Donegal.

www.eirgrid.com
The Oval, 160 Shelbourne Road
Ballsbridge, Dublin D04 FW28, Ireland
Telephone +353 1 677 1700
Email info@eirgrid.com

8th December 2017

Celtic Interconnector Marine Surveys

Dear Capt. Cantwell,

The Celtic Interconnector PCI project is being jointly developed by the two national Transmission System Operators, EirGrid in Ireland and its French counterpart, RTE (Réseau de transport d'électricité) to explore the feasibility of building a submarine electricity interconnector between Ireland and France. The interconnector would be a high voltage direct current (HVDC) circuit and have a capacity of approximately 700 megawatts (MW). An Ireland-France interconnector would, if developed, run between the South coast of Ireland and the North West coast of France, and would comprise a total cable length of approximately 600 kilometres. The Celtic Interconnector project has also received grant funding from the EU under the Connecting Europe Facility.

As you may be aware, we completed a feasibility study of a marine route between Ireland and France in 2016. As part of this study, geophysical and geotechnical / environmental marine surveys were undertaken along a route corridor between east Cork in Ireland and Brittany in France during 2014 and 2015. These surveys were carried out under two separate foreshore licences and following a review of the findings, EirGrid decided to carry out further geophysical, geotechnical and environmental marine surveys to provide additional options for the proposed cable and to avoid areas of challenging geology that was identified on the approach to the east Cork coast. These additional options consist of:

- a route following a slightly different approach route to the Ballinwilling landfall point (previously surveyed in 2014 and 2015), and
- a route to new landfall points at Redbarn and Claycastle beaches to the south of Youghal.

EirGrid successfully carried out the first phase of geophysical surveys of the aforementioned route options in October 2017, under foreshore licence FS 006722, to which your department was a prescribed consultee. EirGrid now intend to carry out the second phase of geotechnical and environmental surveys of these same routes in May 2018, as shown in Figure 1 overleaf. We are working to a tight programme for these surveys and intend to apply for a foreshore licence later this month, i.e. December 2017, and are therefore writing to you now in order to clarify our approach in advance. We expect that the Foreshore Unit will contact you in relation to our new application in the near future and we hope that the information we have provided may assist with the timely return of observations from prescribed consultees to the application process.

As you may recall, when the Marine Survey Office were previously contacted in January 2015 by the Foreshore Unit for observations on our previous geotechnical and environmental survey application (FS006446) the Marine Survey Office responded as follows:

DIRECTORS

John O'Connor
Chairman

Dr Joan Smyth
Deputy Chair

Fintan Slye
Chief Executive

Shane Brennan

Lynne Crowther

Dr Theresa Donaldson

Michael Hand

Eileen Maher

Liam O'Halloran

John Trethowan

Tom Finn
Company Secretary

EirGrid Plc
The Oval
160 Shelbourne Road
Ballsbridge
Dublin D04 FW28
Ireland

Company Registration
No. 338522

- This office has no objections from a navigational viewpoint to the above application.
- In addition to the publication of a Marine Notice, the applicant is required to arrange the publication of a notice in a local newspaper giving a general description of operations and approximate dates of commencement and completion.
- Full consultation with the local harbour authority is required in this matter.

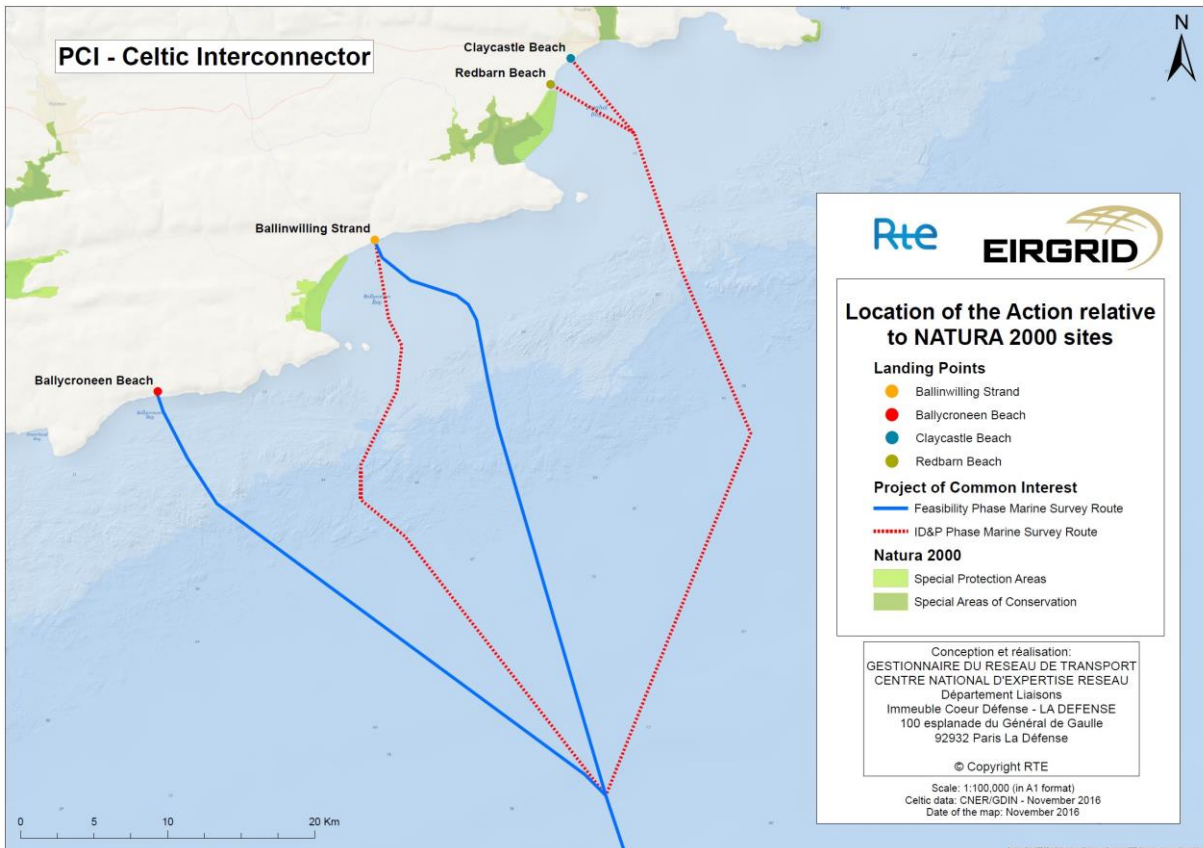


Figure 1 - Marine Survey Routes in East Cork (blue lines surveyed previously and red lines are new routes)

We can confirm that the proposed geotechnical and environmental surveys in 2018 are identical in nature and methodology to those undertaken in 2015 and only differ in location as indicated on the map in Figure 1 above.

Please do not hesitate to contact me should you require any further information on the project.

Yours sincerely,



Eoghan Tuite
Senior Project Engineer
Grid Development and Interconnection

Celtic Interconnector Project



Co-financed by the European Union
Connecting Europe Facility



www.eirgrid.com

The Oval, 160 Shelbourne Road
Ballsbridge, Dublin D04 FW28, Ireland

Telephone +353 1 677 1700

Email info@eirgrid.com

Declan Mac Gabhann,
Sea Fisheries Protection Authority (Eastern Region),
Howth Fishery Harbour Centre,
Auction Hall,
West Pier,
Howth,
Co. Dublin.

8th December 2017

Celtic Interconnector Marine Surveys

Dear Mr. Mac Gabhann,

The Celtic Interconnector PCI project is being jointly developed by the two national Transmission System Operators, EirGrid in Ireland and its French counterpart, RTE (Réseau de transport d'électricité) to explore the feasibility of building a submarine electricity interconnector between Ireland and France. The interconnector would be a high voltage direct current (HVDC) circuit and have a capacity of approximately 700 megawatts (MW). An Ireland-France interconnector would, if developed, run between the South coast of Ireland and the North West coast of France, and would comprise a total cable length of approximately 600 kilometres. The Celtic Interconnector project has also received grant funding from the EU under the Connecting Europe Facility.

As you may be aware, we completed a feasibility study of a marine route between Ireland and France in 2016. As part of this study, geophysical and geotechnical / environmental marine surveys were undertaken along a route corridor between east Cork in Ireland and Brittany in France during 2014 and 2015. These surveys were carried out under two separate foreshore licences and following a review of the findings, EirGrid decided to carry out further geophysical, geotechnical and environmental marine surveys to provide additional options for the proposed cable and to avoid areas of challenging geology that was identified on the approach to the east Cork coast. These additional options consist of:

- a route following a slightly different approach route to the Ballinwilling landfall point (previously surveyed in 2014 and 2015), and
- a route to new landfall points at Redbarn and Claycastle beaches to the south of Youghal.

EirGrid successfully carried out the first phase of geophysical surveys of the aforementioned route options in October 2017, under foreshore licence FS 006722, to which your department was a prescribed consultee. EirGrid now intend to carry out the second phase of geotechnical and environmental surveys of these same routes in May 2018, as shown in Figure 1 overleaf. We are working to a tight programme for these surveys and intend to apply for a foreshore licence later this month, i.e. December 2017, and are therefore writing to you now in order to clarify our approach in advance. We expect that the Foreshore Unit will contact you in relation to our new application in the near future and we hope that the information we have provided may assist with the timely return of observations from prescribed consultees to the application process.

DIRECTORS

John O'Connor
Chairman

Dr Joan Smyth
Deputy Chair

Fintan Slye
Chief Executive

Shane Brennan

Lynne Crowther

Dr Theresa Donaldson

Michael Hand

Eileen Maher

Liam O'Halloran

John Trethowan

Tom Finn
Company Secretary

EirGrid Plc
The Oval
160 Shelbourne Road
Ballsbridge
Dublin D04 FW28
Ireland

Company Registration
No. 338522

As you may recall, when the Sea Fisheries Protection Authority were previously contacted in January 2015 by the Foreshore Unit for observations on our previous geotechnical and environmental survey application (FS006446) the Sea Fisheries Protection Authority responded as follows:

“It is considered unlikely that the installation will interfere in any way with any sea-fishing operations.”

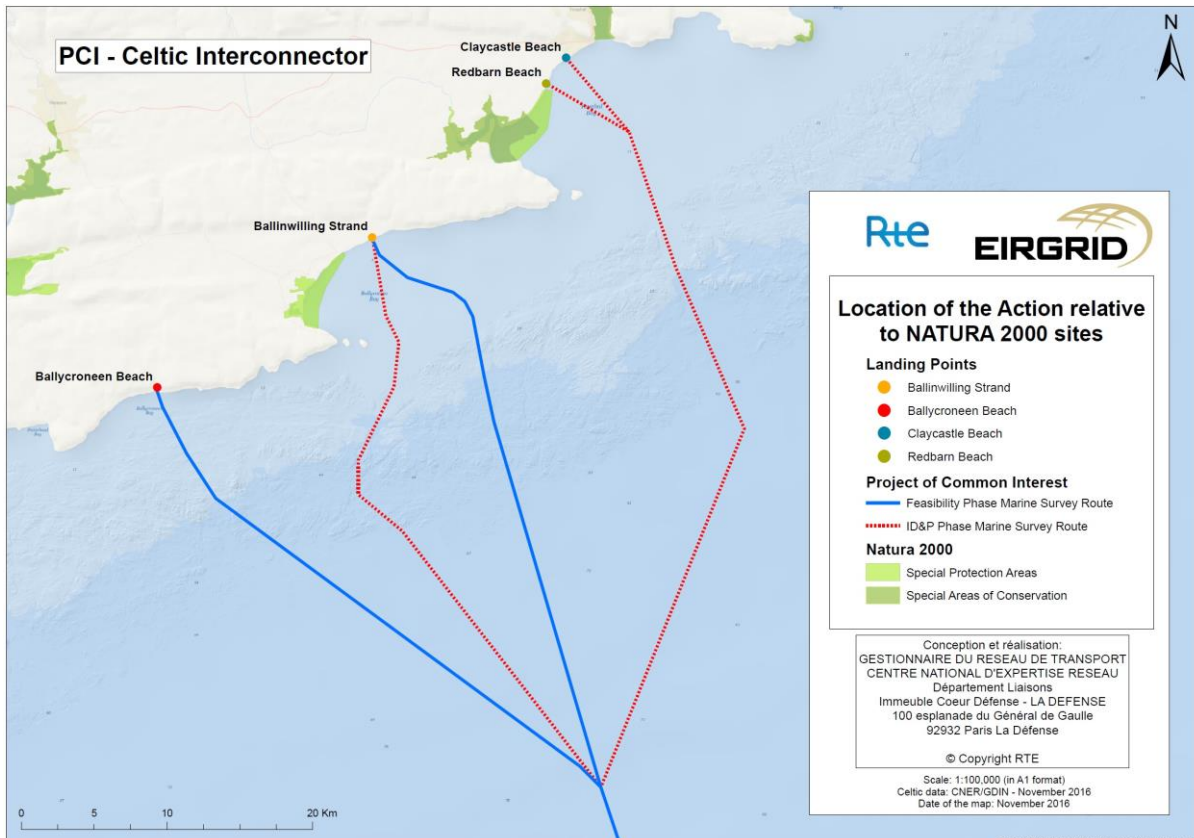


Figure 1 - Marine Survey Routes in East Cork (blue lines surveyed previously and red lines are new routes)

We can confirm that the proposed geotechnical and environmental surveys in 2018 are identical in nature and methodology to those undertaken in 2015 and only differ in location as indicated on the map in Figure 1 above. We have also appointed a Fisheries Liaison Officer for the additional survey works and would be more than happy to provide details of such to the Sea Fisheries Protection Authority if requested to do so.

Please do not hesitate to contact me should you require any further information on the project.

Yours sincerely,



Eoghan Tuite
Senior Project Engineer
Grid Development and Interconnection

Celtic Interconnector Project