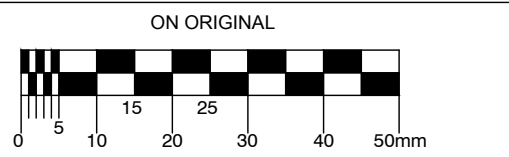
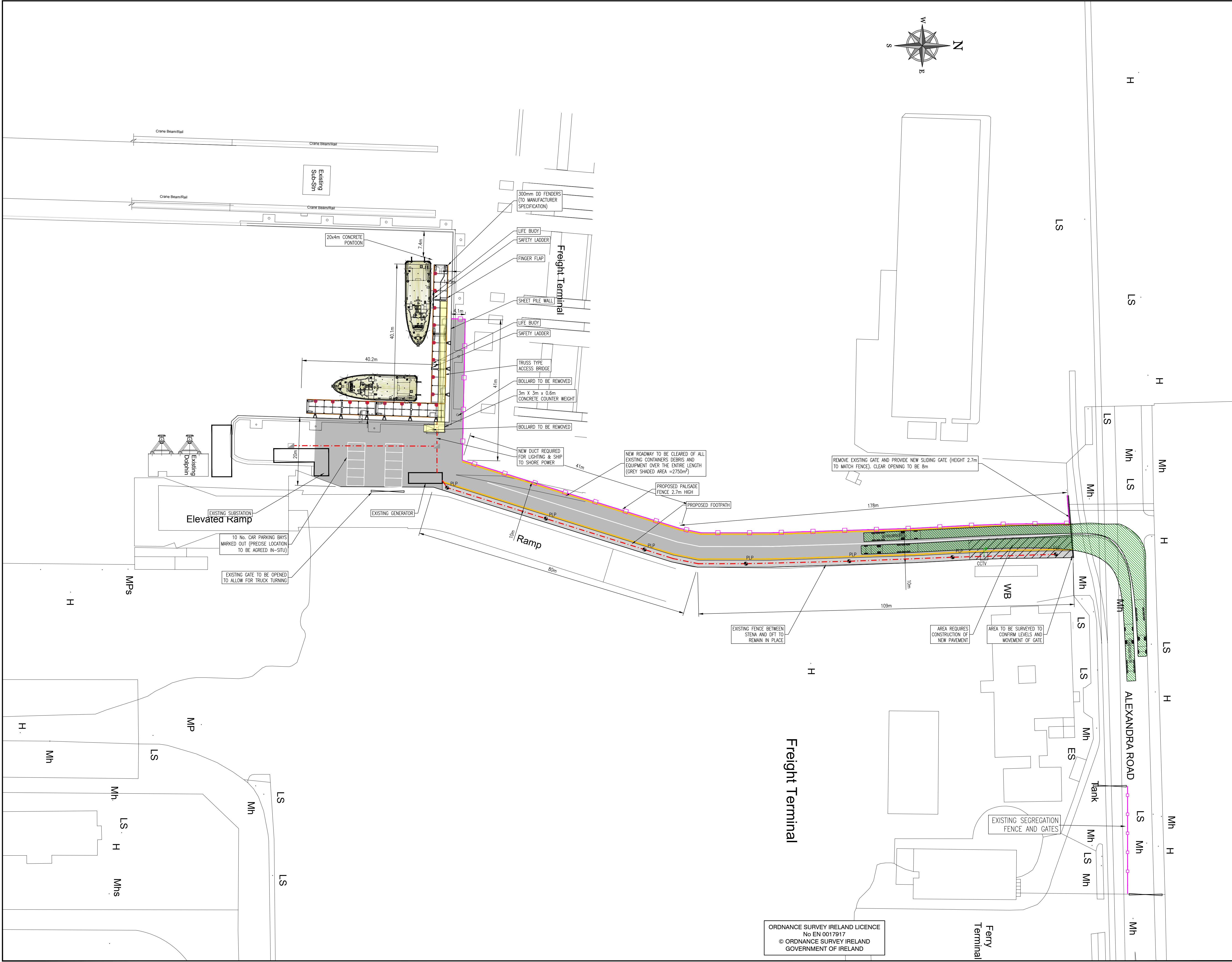
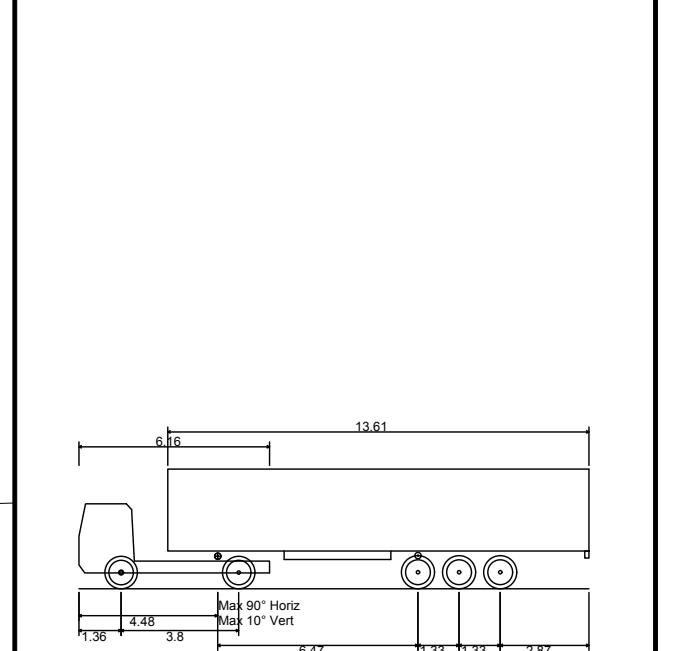


© COPYRIGHT OF THIS DRAWING IS RESERVED BY DBFL CONSULTING ENGINEERS. NO PART SHALL BE REPRODUCED OR TRANSMITTED WITHOUT THEIR WRITTEN PERMISSION.



- NOTES:
1. ALL WORKS SHALL BE CONSTRUCTED IN ACCORDANCE WITH THE SPECIFICATION FOR ROADWORKS.
 2. ALL DIMENSIONS IN METRES UNLESS SPECIFIED OTHERWISE.
 3. ALL CO-ORDINATES ARE TO IRISH TRANSVERSE MERCATOR.
 4. ALL LEVELS ARE TO ORDNANCE DATUM (MATHS HEAD).
 5. ALL TEMPORARY TRAFFIC & OPERATIONS MANAGEMENT SHALL COMPLY FULLY WITH THE CONTRACT SPECIFICATION CLAUSE 117.
 6. THE CONTRACTOR MUST WORK DIRECTLY WITH DUBLIN PORT COMPANY DEPARTMENTS.
 7. ALL VEHICULAR & OPERATIONAL ROUTES WITHIN AND SURROUNDING THE WORKS EXTENTS MUST BE MAINTAINED THROUGHOUT THE WORKS IN ACCORDANCE WITH THE CONTRACTORS APPROVED TEMPORARY TRAFFIC & OPERATIONS MANAGEMENT PLAN.
 8. CONTRACTOR SHALL EMPLOY THE SERVICES OF AN APPROVED SURVEY COMPANY TO ESTABLISH THE GRID IDENTIFIED.
 9. ALL AGGREGATES PROPOSED FOR USE ON THIS SCHEME SHALL MEET FULLY THE REQUIREMENTS OF THE CONTRACT SPECIFICATION AND IN ADDITION THE REQUIREMENTS SET OUT IN STANDARD RECOMMENDATION S.R. 21:2014 GUIDANCE ON THE USE OF U.S. EN 13242:2002 +A1:2007 -AGGREGATES FOR UNBOUND AND HYDRAULICALLY SOUND MATERIALS FOR USE IN CIVIL ENGINEERING WORK AND ROAD CONSTRUCTION.

- LEGEND
- PROPOSED PALISADE FENCE
 - PROPOSED DUCTS
 - CCTV
 - CCTV BASE
 - PLP
 - LIGHTING COLUMN



ORDNANCE SURVEY IRELAND LICENCE
No EN 0017917
© ORDNANCE SURVEY IRELAND
GOVERNMENT OF IRELAND

REV.	DATE	DESCRIPTION	BY	CHKD.
A	06.10.17	PONTOON LAYOUT UPDATED	GMC	DB

PLANNING

DESIGNED	DB	PREPARED	GMC
DATE	SEPT 2017	CHECKED	WBA

DBFL Consulting Engineers
Dublin Office: Ormond House, Upper Ormond Quay, Dublin 7, Ireland. PHONE +353 1 400 4000 FAX +353 1 400 4050
Waterford Office: Unit 2, The Chandlery, 1-2 O'Connell Street, Waterford, Ireland. PHONE +353 51 300 500 FAX +353 51 844 913
DBFL Consulting Engineers email: info@dbfl.ie site: www.dbfl.ie

PROJECT
BERTH 50 TUGBOAT ACCESS
EGRESS

DRG. TITLE
PONTOON LAYOUT

CLIENT
DUBLIN PORT COMPANY - PMO
OFFICE

SCALE	1:500 @A1	FILE REF.	170157-2003
DRG. NO.	170157-2100-1		A