

Appendix 7.1: Details of Intertidal Quadrat Surveys on the Greencastle and Greenore Point Shores

Greencastle Quadrats

Four 0.5m x 0.5m quadrats were surveyed moving from the upper part of the outcrop to just above the sand line

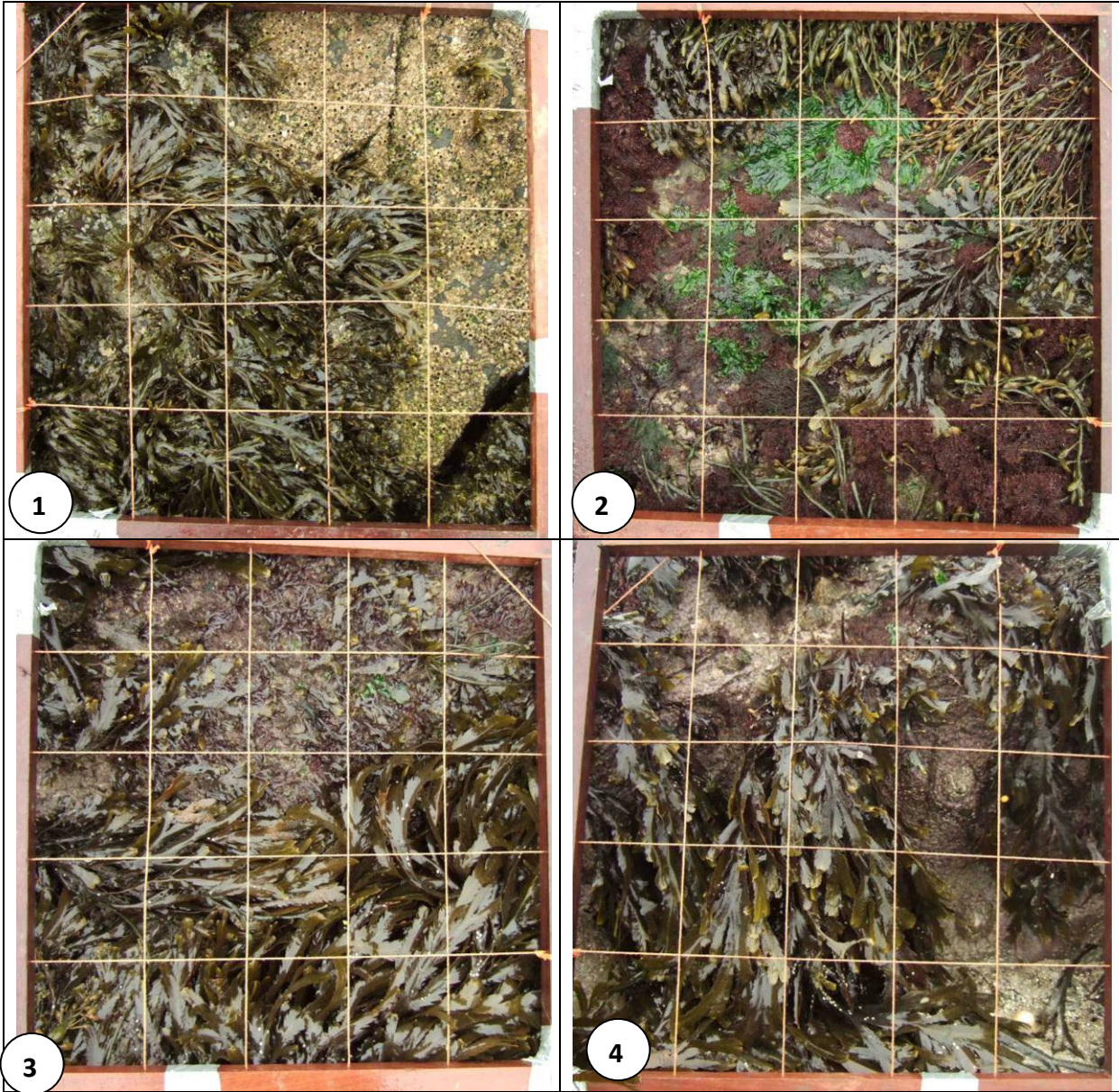


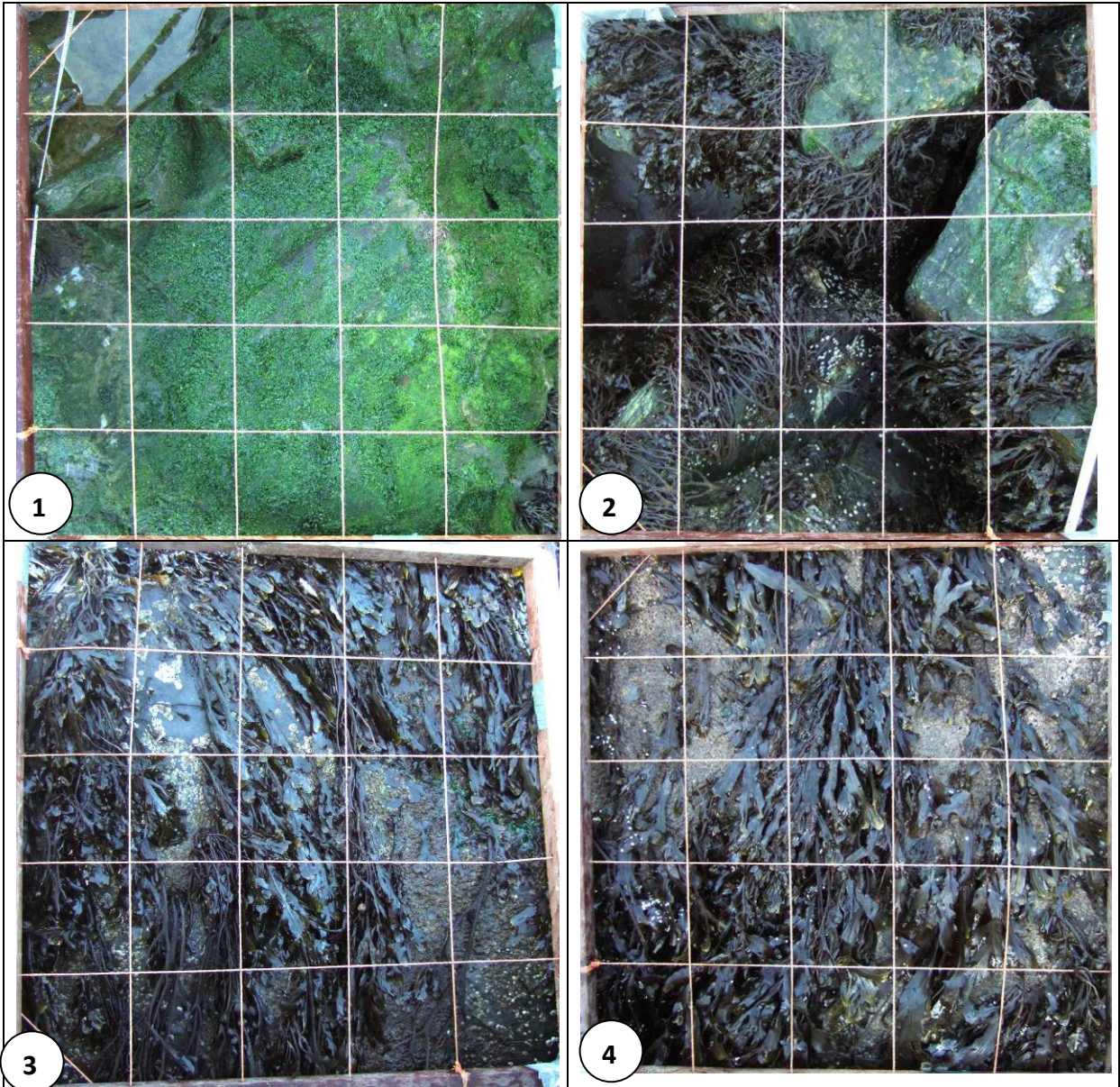
Figure 1 Photos of Quadrats 1-4 from the rocky outcrop to the east of the development

Table A1 Details of marine algae (seaweed) and invertebrates recorded in the Greencastle shore quadrats.

Quadrat code	Quadrat Contents
Q1	<i>Fucus vesiculosus</i> 52%, barnacles 84% (including <i>Chthamalus</i> , <i>Semibalanus</i> and <i>Elminius</i>), bare 16%, very small <i>Littorina rudis</i> common
Q2	Sandy layer on rock. <i>Ascophyllum</i> 14%, <i>Polysiphonia lanosa</i> 15%, <i>Ulva</i> 12%, <i>F. vesiculosus</i> 4%, <i>F. serratus</i> 8%, Encrusting calcareous red alga 4%, <i>Cladophora rupestris</i> 5%, fine red algae 6% (incl, <i>Ceramium</i> spp., <i>Polysiphonia</i> spp.), <i>Cladostephus spongiosus</i> +, <i>Lomentaria articulata</i> + <i>Patella vulgata</i> 1, <i>Halichondria panicea</i> +
Q3	<i>F. serratus</i> 60%, <i>Chondrus crispus</i> 16%, <i>Gelidium</i> 2%, Calcareous encrusting red algae 4-6%, <i>Ulva</i> ~1%, <i>C. spongiosus</i> ~1%, <i>Lomentaria articulata</i> +, <i>Sabellaria</i> colony (heavily scoured) 12%, <i>Littorina obtusata/mariae</i> 5, <i>L. littorea</i> 1. <i>Spirorbis</i> frequent. Sand cover on rock.
Q4	<i>F. serratus</i> 52%, Fine red algae 5% (mainly <i>Ceramium</i> sp) , <i>Gelidium</i> 2%, <i>L. articulata</i> 2%, <i>C. spongiosus</i> +, <i>Ulva</i> +, Calcareous encrusting red algae with sparse barnacles 60% (<i>Semibalanus</i> and <i>Verruca stroemia</i>), <i>Spirorbis</i> common, <i>Patella vulgata</i> 6, <i>L. obtusata/mariae</i> 7, Tiny mussels (?) numerous.

Greenore Quadrats

Five 0.5m x 0.5m quadrats were surveyed moving from the upper part of the transect to just above the *Laminaria* zone



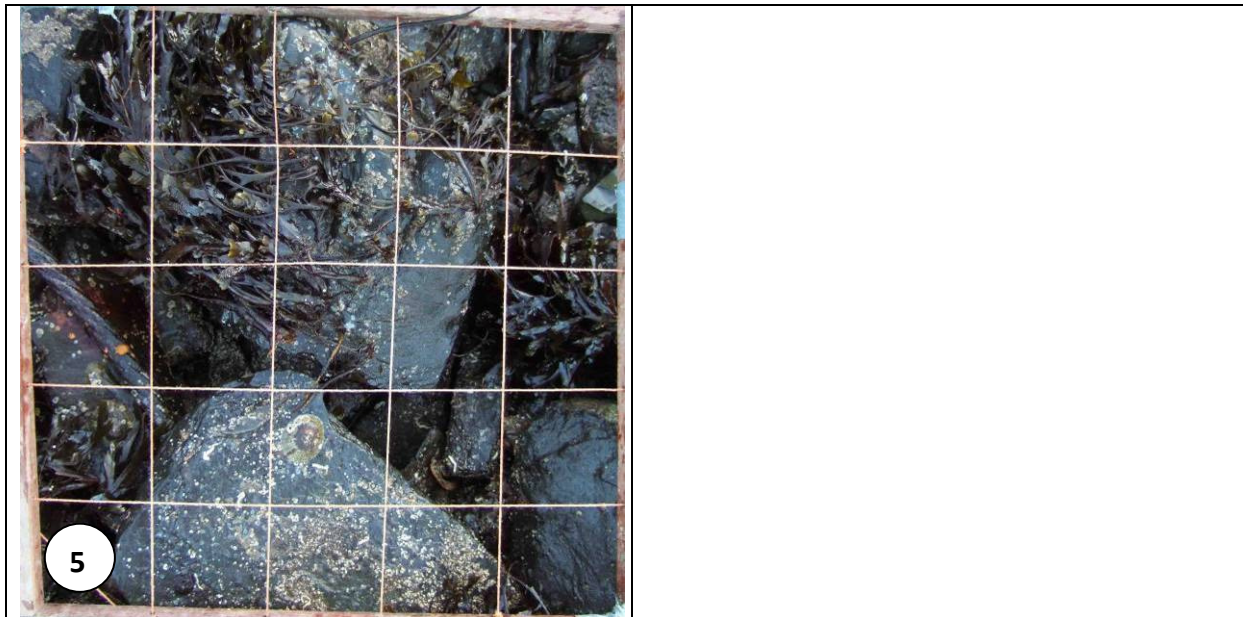


Figure A2 Photos of Quadrats 1-5 from the Greenore Point transect

Table A2 Details of marine algae (seaweed) and invertebrates recorded in the Greenore quadrats

Quadrat code	Quadrat Contents
Q1	<i>Enteromorpha</i> ~100%, <i>Pelvetia canaliculata</i> +
Q2	<i>Enteromorpha</i> (fine) 12%, <i>Pelvetia</i> 4%, <i>Fucus spiralis</i> 3%, Barnacles (<i>Semibalanus balanoides</i>) frequent
Q3	<i>F. vesiculosus</i> 48%, <i>Ulva</i> 2%, Barnacles (<i>S. balanoides</i>) 16%, <i>Patella vulgata</i> 3, <i>Littorina obtusata/mariae</i> 3
Q4	<i>F. vesiculosus</i> 42%, <i>F. serratus</i> 10%, Barnacles (<i>S. balanoides</i>) 85%, <i>L. obtusata/mariae</i> 11, <i>P. vulgata</i> 1, <i>Spirorbis</i> frequent.
Q5	<i>F. serratus</i> 25%, <i>P. vulgata</i> 3, <i>L. obtusata/mariae</i> 5, <i>Elminius modestus</i> frequent, <i>Balanus crenatus</i> frequent, <i>Pomatoceros</i> frequent, <i>Spirorbis</i> frequent, <i>Dynamena pumila</i> frequent