

Note:

Area Subject to Foreshore Licence Application -

Foreshore Area of Survey = 51.25km² (Outlined red)

Foreshore Area of Main Lay Cable = 1.025km² (contained within survey corridor)

Proposed Survey corridor is 500m wide centred on the route

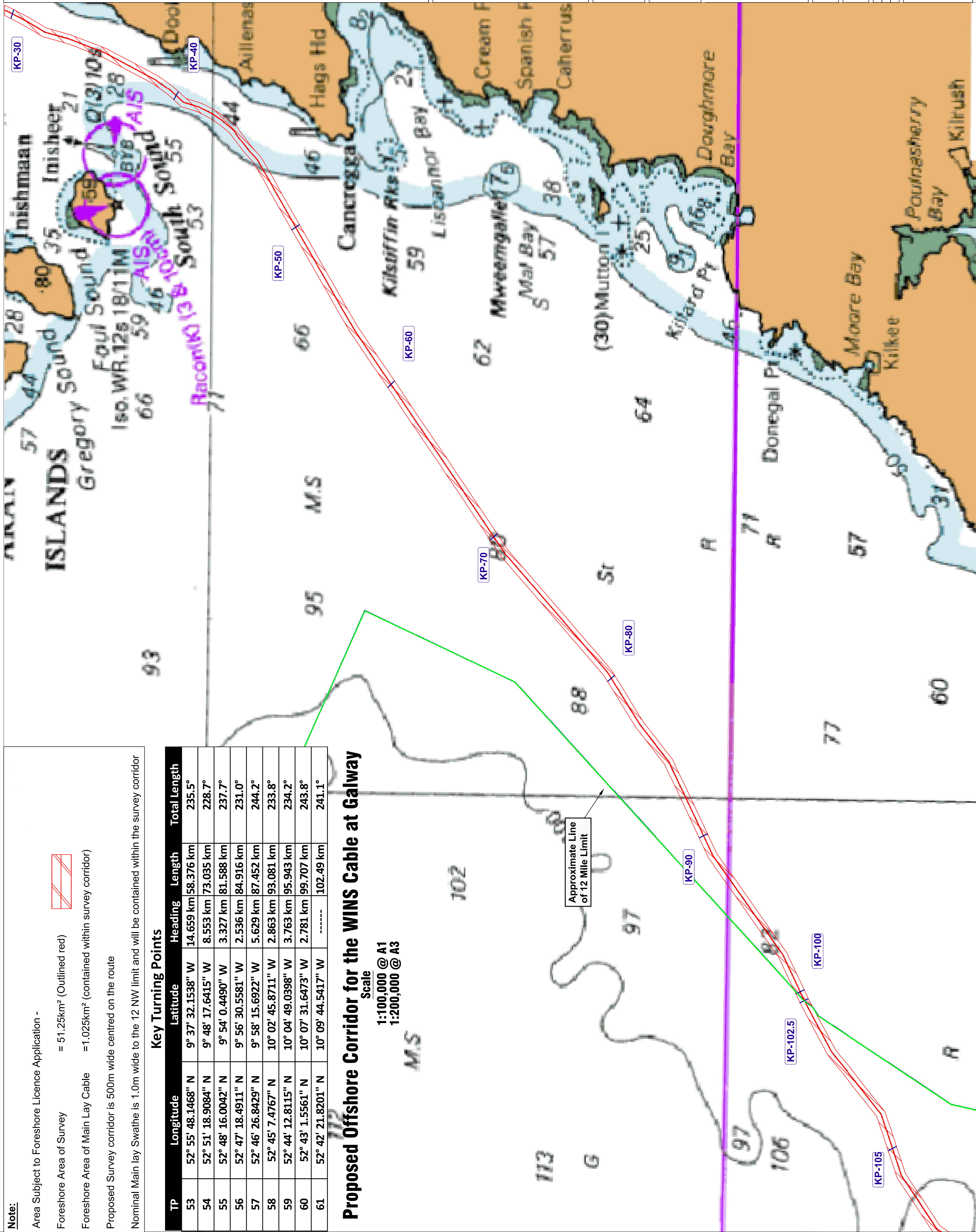
Nominal Main lay Swathe is 1.0m wide to the 12 NW limit and will be contained within the survey corridor

Key Turning Points

TP	Longitude	Latitude	Heading	Length	Total Length
53	52° 55' 48.1468" N	9° 37' 32.1538" W	14.659 km	58.376 km	235.5°
54	52° 51' 18.9084" N	9° 48' 17.6415" W	8.553 km	73.035 km	228.7°
55	52° 48' 16.0042" N	9° 54' 0.4490" W	3.327 km	81.588 km	237.7°
56	52° 47' 18.4911" N	9° 56' 30.5581" W	2.536 km	84.916 km	231.0°
57	52° 46' 26.8429" N	9° 58' 15.6922" W	5.629 km	87.452 km	244.2°
58	52° 45' 7.4767" N	10° 02' 45.8711" W	2.863 km	93.081 km	233.8°
59	52° 44' 12.8115" N	10° 04' 49.0398" W	3.763 km	95.943 km	234.2°
60	52° 43' 1.5561" N	10° 07' 31.6473" W	2.781 km	99.707 km	243.8°
61	52° 42' 21.8201" N	10° 09' 44.5417" W	-----	102.49 km	241.1°

Proposed Offshore Corridor for the WINS Cable at Galway

Scale
1:100,000 @ A1
1:200,000 @ A3



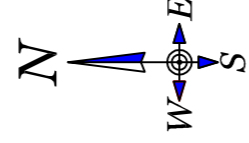
LEGEND

KP - x Kilometre Point at x km from BMH

Signed

Thomas J McMahon
BE NSc, C.Eng., FIEI, M.ASCE
McMahon Design & Management Ltd.
15 The Seapoint Building
Clontarf Road Dublin 3

Date
26/07/2018



CLIENT



PROJECT

WINS

Ref: FS006838

TITLE

Foreshore Licence Map 4
Offshore

REV

0

14/03/2018

Draft

DESCRIPTION

PROJECT NUMBER

1317

DRAWING NUMBER

1317-A-105

DRAWN BY

DF

SCALE

1:100,000 @ A1

CHECKED BY

MCM

1:200,000 @ A3

APPROVED BY

TJCM

1:200,000 @ A3



McMahon Design & Management Ltd.
- Consulting Engineers - Project Managers -
15 The Seapoint Building, Clontarf Road, Dublin 3
Tel: +353-1-2060000 Fax: +353-1-2060000
www.mcmahondesign.com