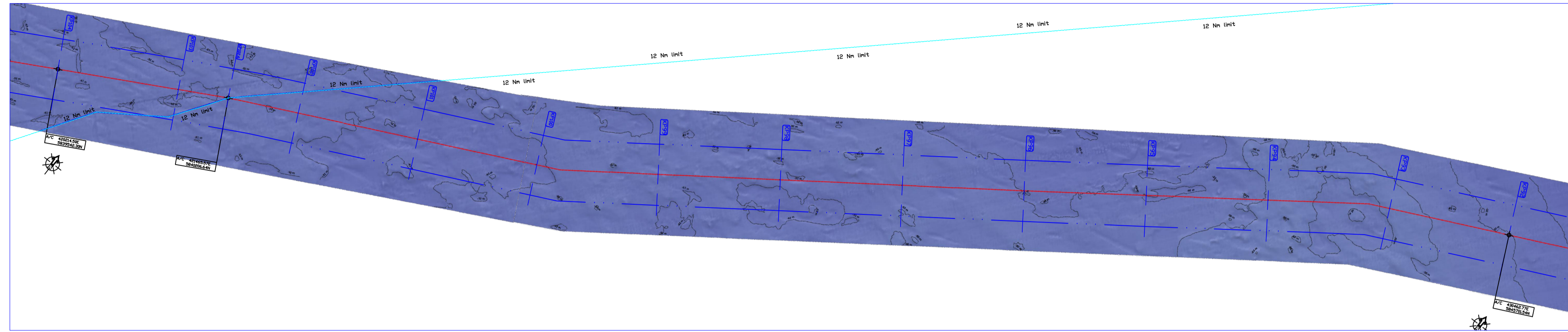
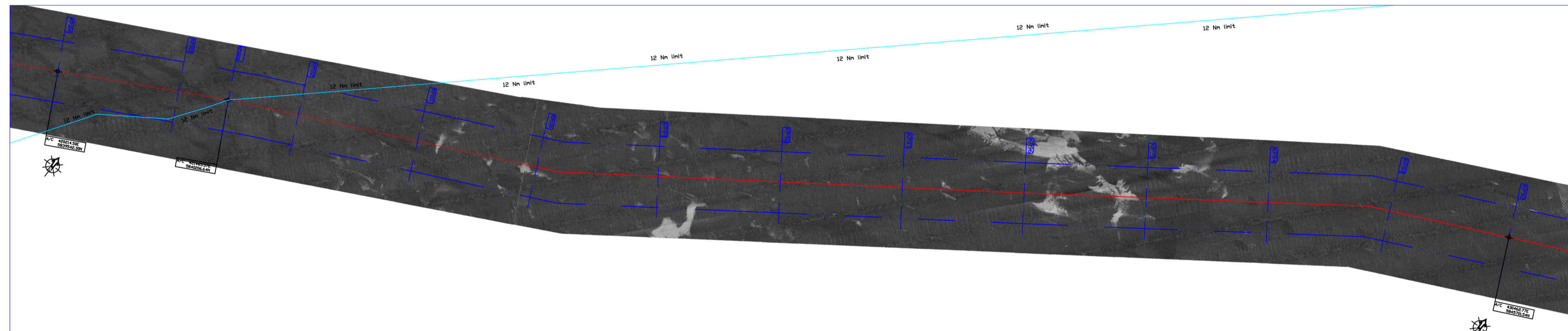


A: BATHYMETRY



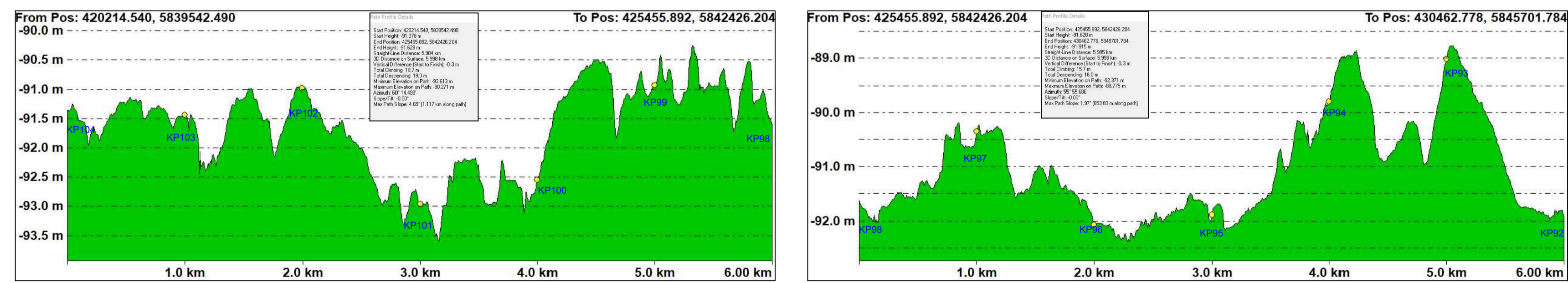
KP104 - KP92

B: SEABED FEATURES - MBES BACKSCATTER



KP104 - KP92

C: INTERPRETED LONGITUDINAL BATHYMETRIC PROFILE



D: ENGINEERING

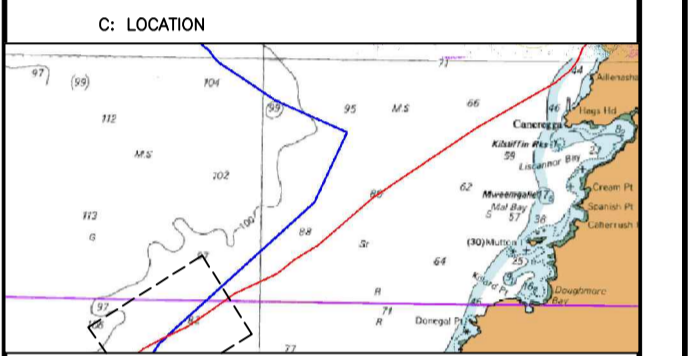
General Notes

- HIGH WATER MARK (H.W.M.)
- PROPOSED CABLE ROUTE
- KILOMETRE MARKER POST
- ROUTE CORRIDOR (500M)
- 12 NAUTICAL MILE LIMIT
- ROUTE POINT POSITION

A: BATHYMETRY
SPOT DEPTHS IN METRES LAT
BATHYMETRY CONTOURS REDUCED TO METRES LAT
ALL DIMENSIONS IN METRES

B: SEABED FEATURES

- No Data
- Class 0 Silt
- Class 0 Rock
- Class 4 Rock (High Texture)
- Class 2 Coarse to Coarse Grains
- Class 2 Coarse to Medium Sand
- Class 1 Fine Sands to Mud
- SAND WAVE CREST
- BOULDER (HEIGHT IN METRES AND ID)
- DEBRIS (DIMENSIONS LxWxH AND ID)
- AREA OF DEBRIS
- LINEAR DEBRIS (LENGTH IN METRES AND ID)
- WRECK (AS FOUND POSITION, DIM'S IN METRES AND ID)
- WRECK WITH POSITION FROM CLIENT AND ID
- MAGNETOMETER ANOMALY IN HT AND ID
- CABLE (AS FOUND POSITION)
- CPT LOCATION AND ID
- SEABED SAMPLE LOCATION AND ID



DO NOT SCALE FROM THIS DRAWING
NO LIABILITY FOR OMISSION, ERRORS OR OMISSIONS WILL BE ACCEPTED BY DEESEA FIBRE NETWORKS LTD

GEODETIC INFORMATION
Projection: UTM ZONE 29 NORTH CENTRAL MERIDIAN 9° WEST
Vertical Datum: Adgeodetic Chart Datum
Geoidetic Datum: WGS84

No.	Revision/Issue	Date
	Rev 1.1	02/03/18
	Rev 1.2	25/07/18

Firm Name and Address

 DeepSea Fibre Networks Ltd
 15 The Seapoint Building,
 Clontarf Road,
 Dublin 3
 Tel: +353-1-8536500
 www.deepseafibre.com

Project Name:
 WINS SUBSEA CABLE SYSTEM
 ROUTE CORRIDOR SURVEY DATA
 ALIGNMENT SHEET KP92 - KP104
 Project Number: 1317
 Foreshore Licence Ref: FS006838

Date collected:	Sheet
INFOMAR/INSS/MDM DATA 02-17	1317-WINS-AL-07
Drawing issued: 26 JULY 2018 Drafted by: Kevin Whyte	
Scale 1:25,000	Plot size ISO A1