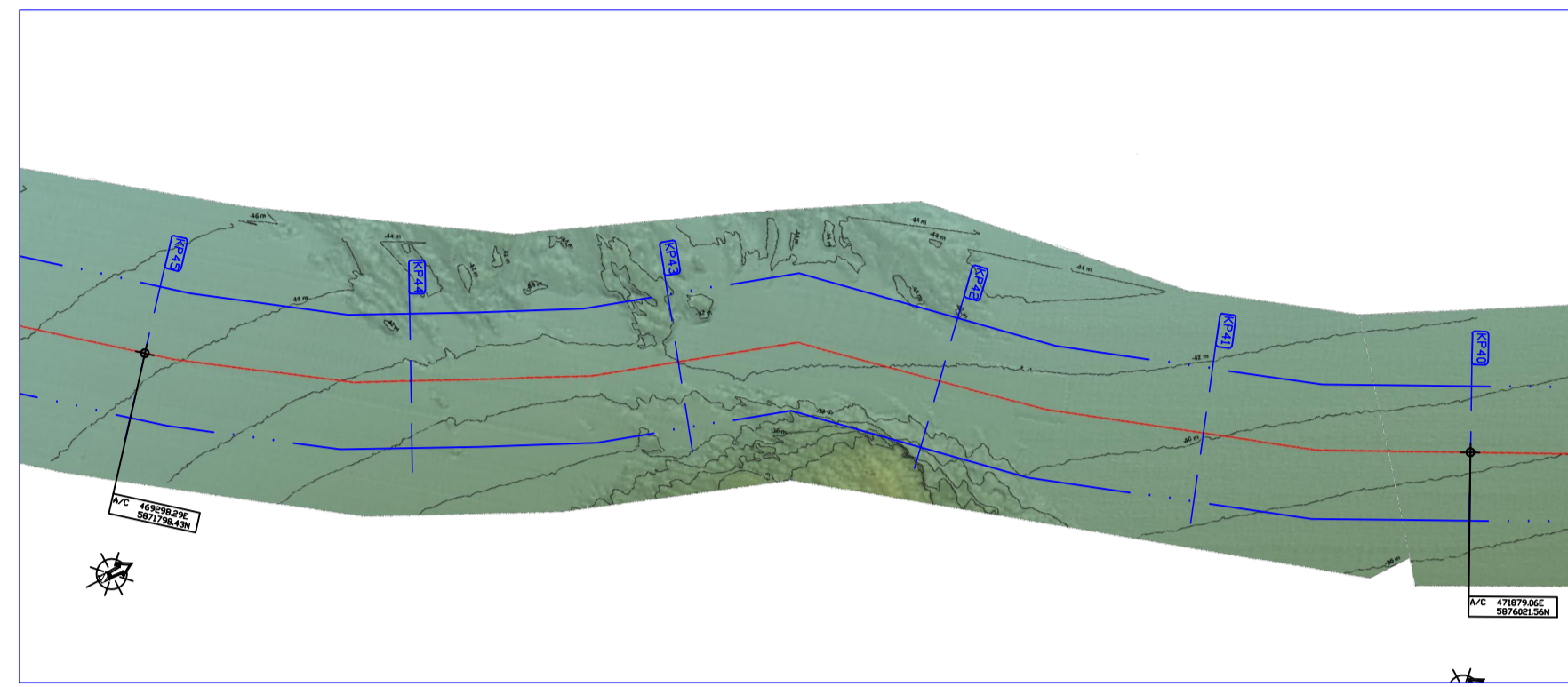
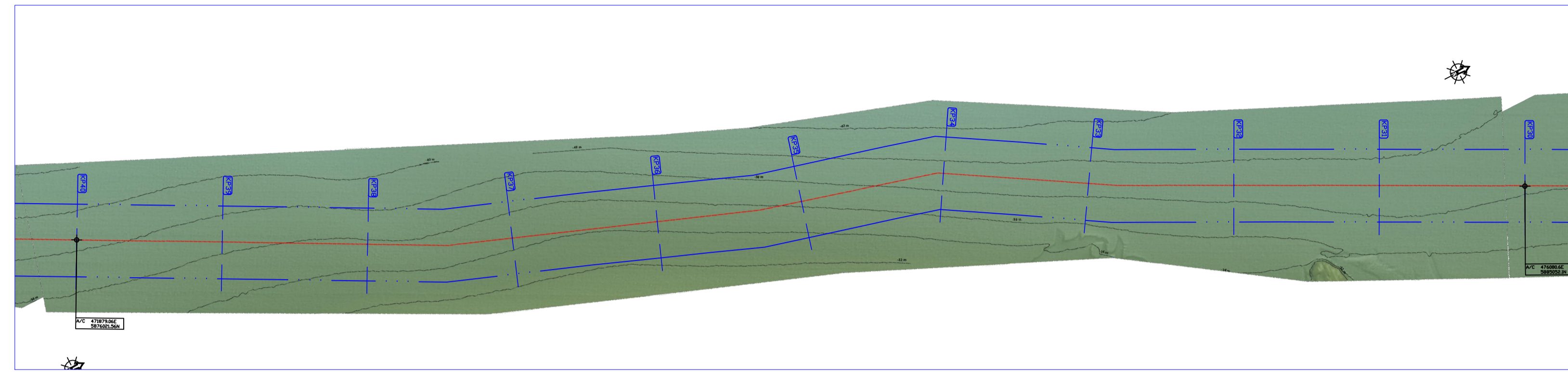


A: BATHYMETRY

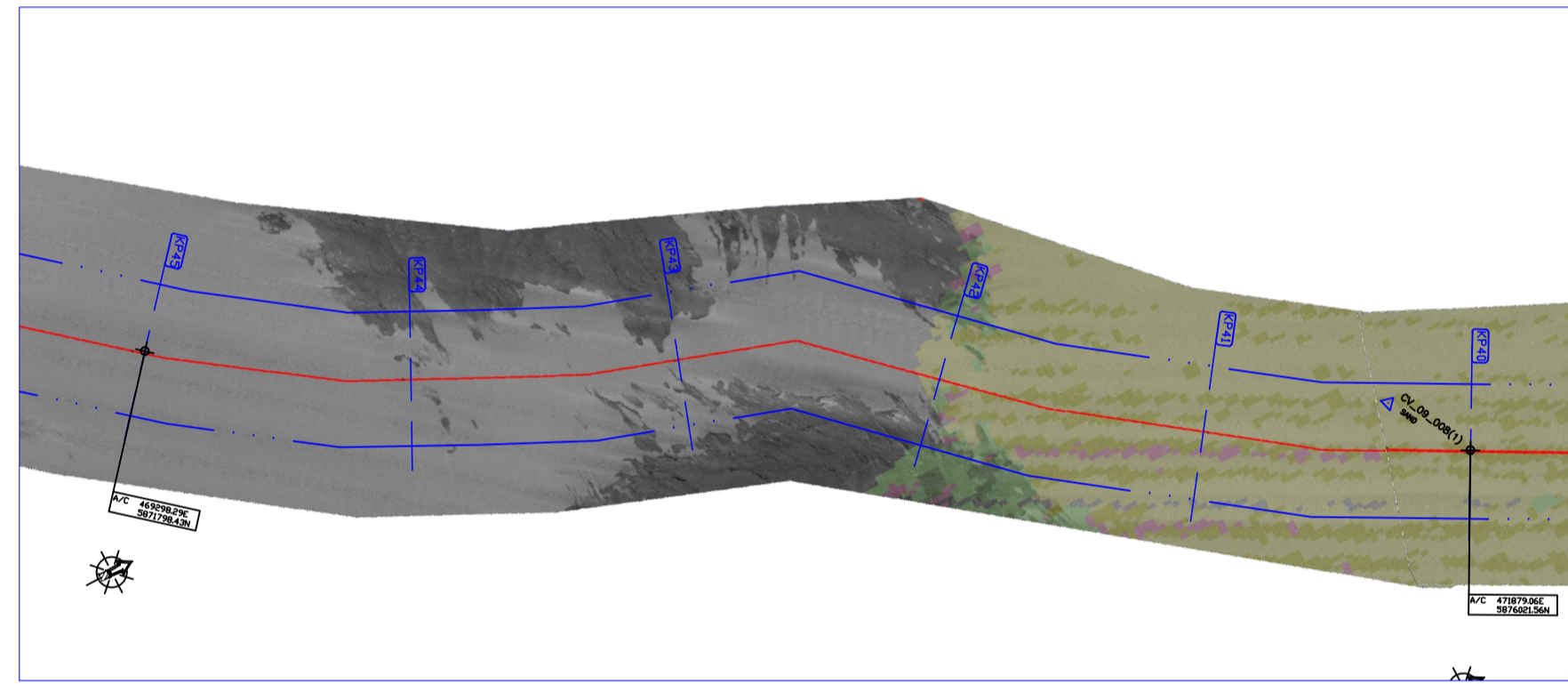


KP45 - KP40

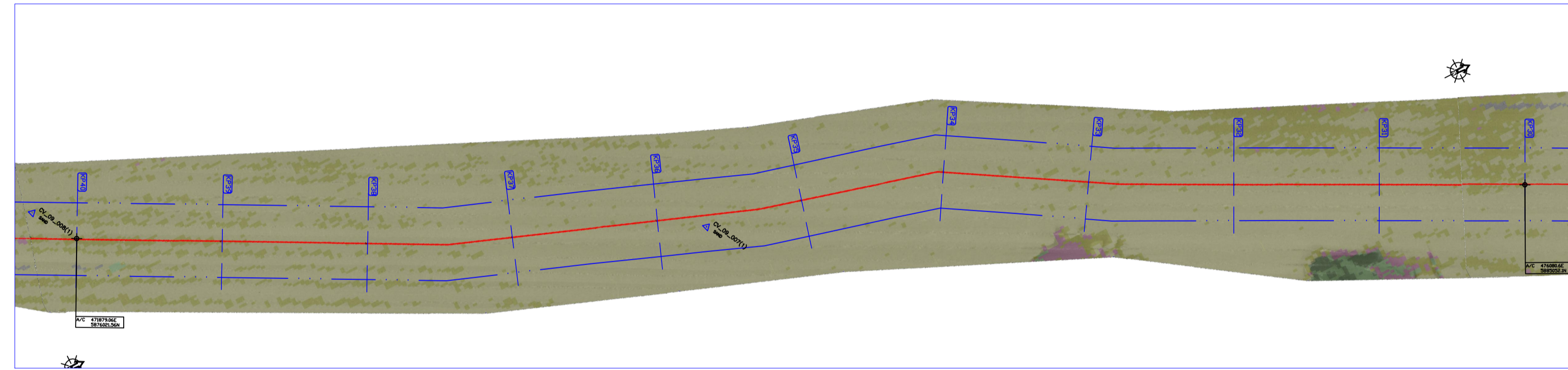


KP40 - KP30

B: SEABED FEATURES

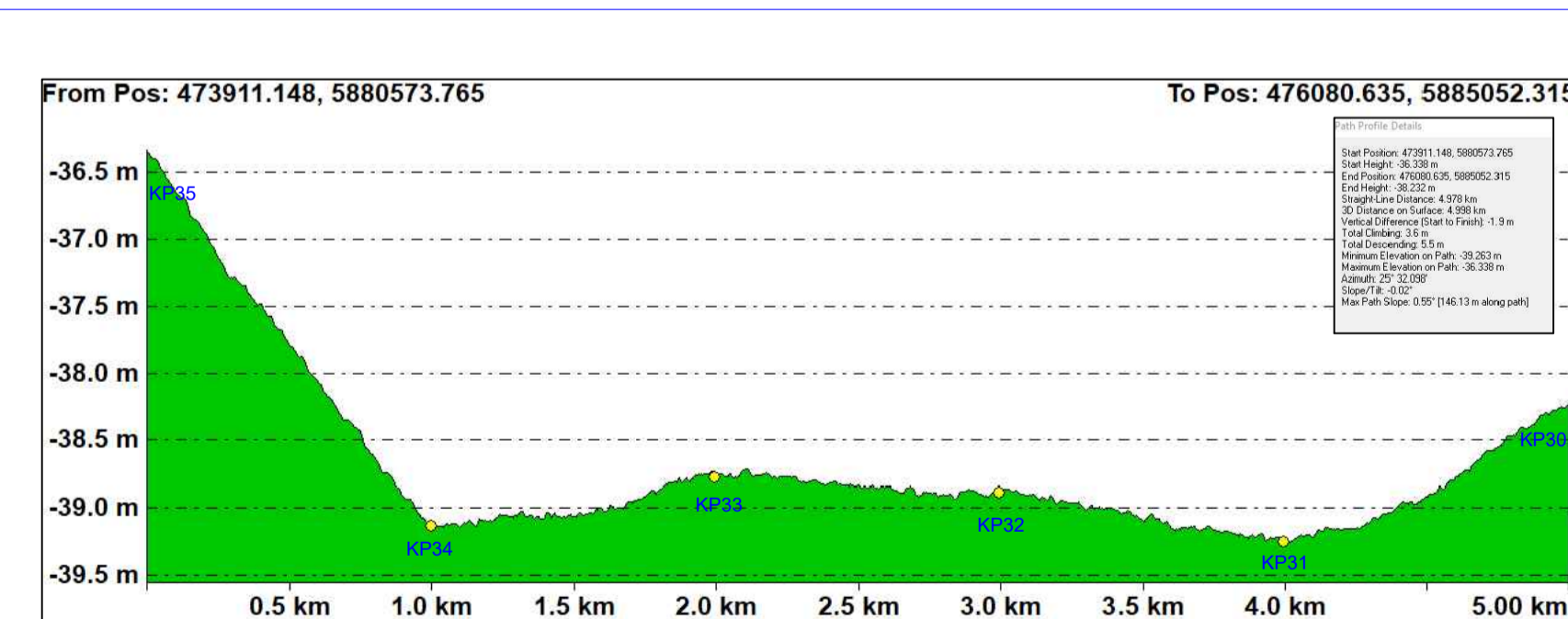
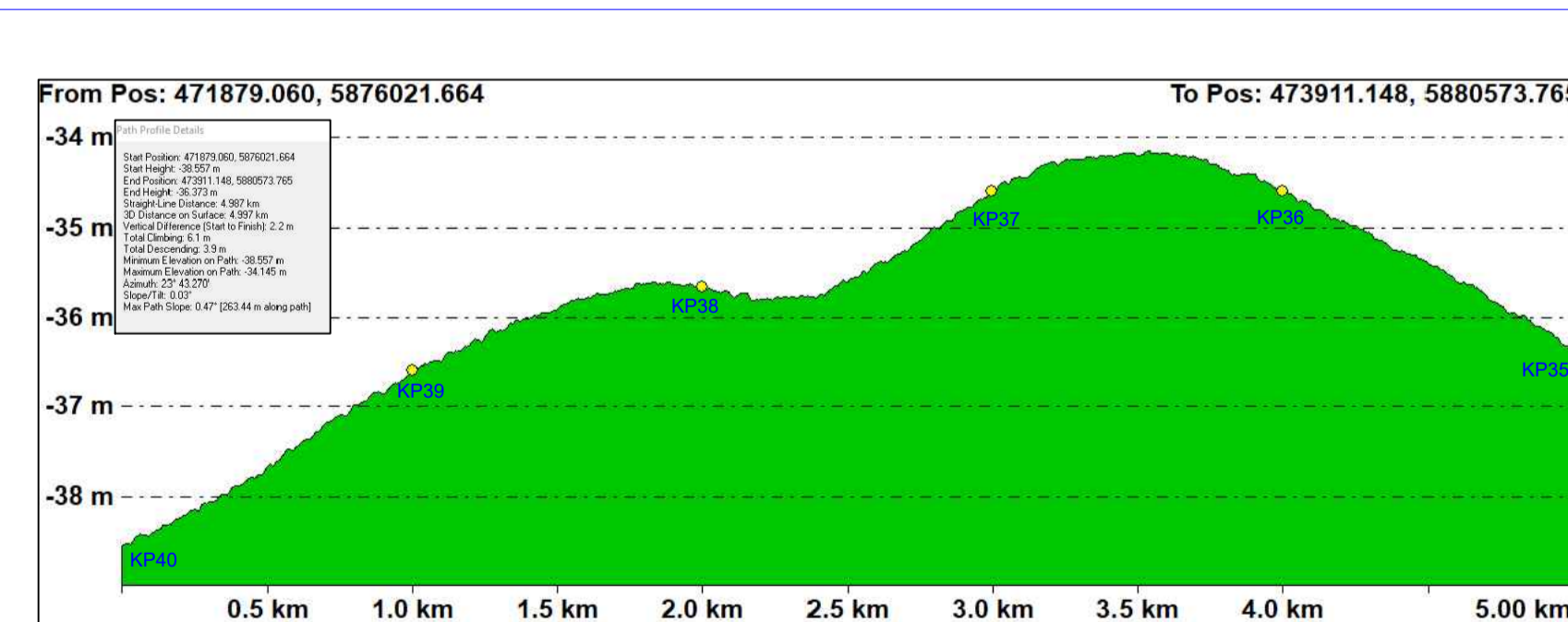
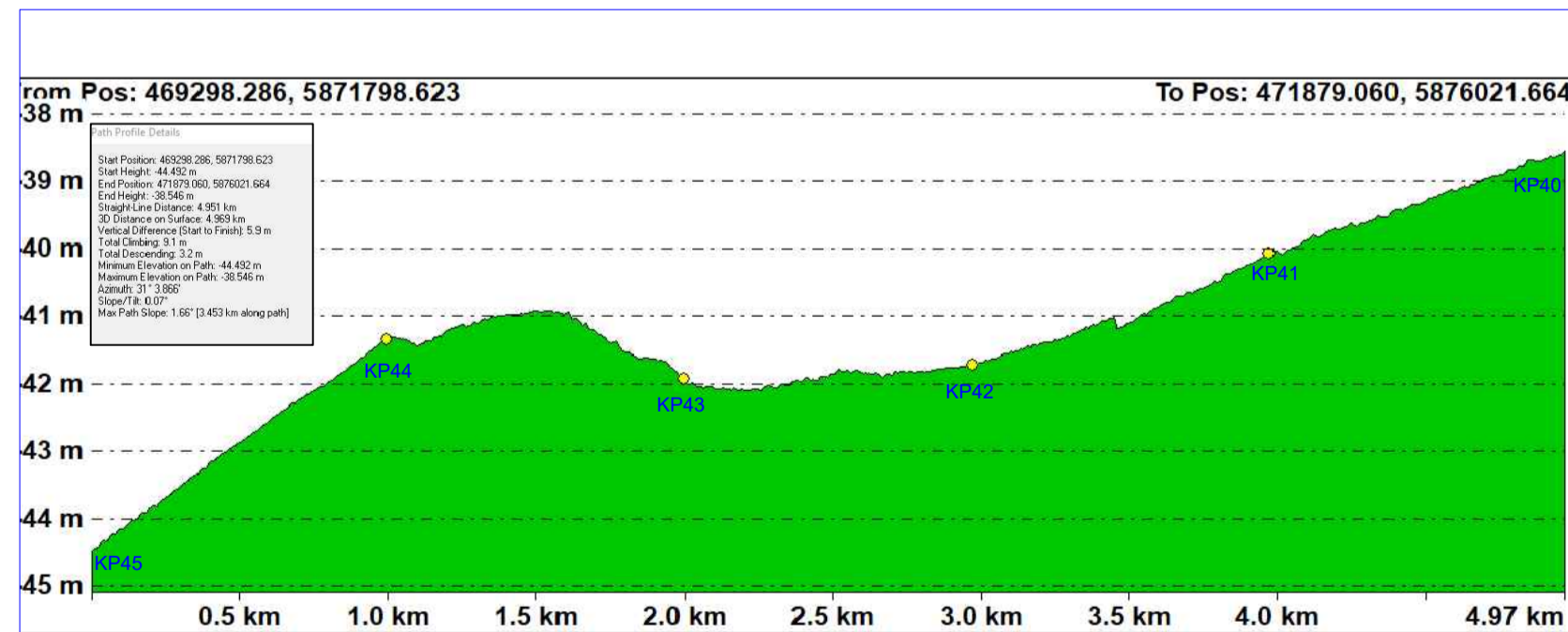


KP45 - KP40

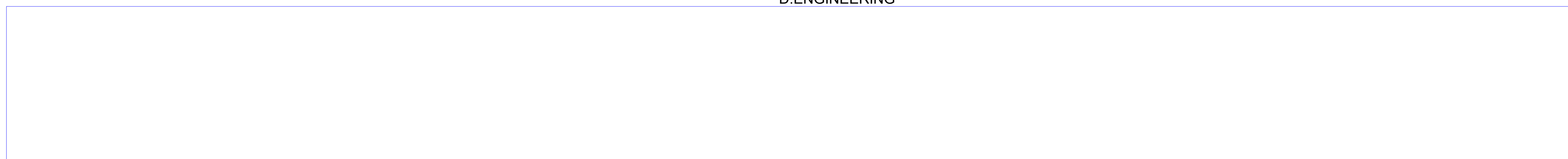


KP40 - KP30

C: INTERPRETED LONGITUDINAL BATHYMETRIC PROFILE



D: ENGINEERING



General Notes

- HIGH WATER MARK (H.W.M.)
- PROPOSED CABLE ROUTE
- KILOMETRE MARKER POST
- ROUTE CORRIDOR (500M)
- 12 NAUTICAL MILE LIMIT
- ROUTE POINT POSITION

A: BATHYMETRY
SPOT DEPTHS IN METRES LAT
BATHYMETRY CONTOURS REDUCED TO METRES LAT
ALL DIMENSIONS IN METRES

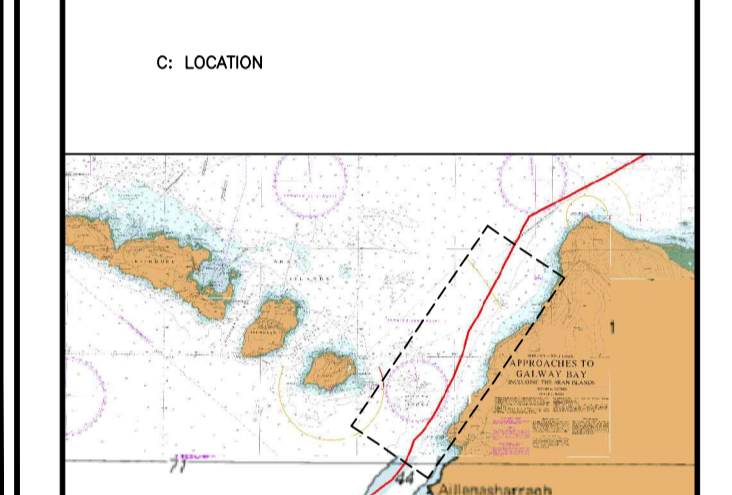
B: SEABED FEATURES

- No Data
- Class 6 Silt
- Class 5 Rock
- Class 4 Rock (High Textured)
- Class 3 Gravel to Coarse Grains
- Class 2 Coarse to Medium Sand
- Class 1 Fine Sands to Mud
- SAND WAVE CREST

BOULDER (HEIGHT IN METRES AND ID)
DEBRIS (DIMENSIONS LxWxH AND ID)
AREA OF DEBRIS
LINEAR DEBRIS (LENGTH IN METRES AND ID)
WRECK (AS FOUND POSITION, DIM'S IN METRES AND ID)
WRECK WITH POSITION FROM CLIENT AND ID
MAGNETOMETER ANOMALY IN MET AND ID
CABLE (AS FOUND POSITION)
CPT LOCATION AND ID
SEABED SAMPLE LOCATION AND ID

MDM
McMahon Design & Management Ltd.
17 The Seapoint Building, Clontarf Road, Dublin 3
Tel: +353-1-8536500
Email: info@deepsea.ie

INFOMAR



DO NOT SCALE FROM THIS DRAWING
NO LIABILITY FOR OMISSION, ERRORS OR EXCEPTIONS WILL BE ACCEPTED BY DEEPSEA FIBRE NETWORKS LTD

GEODETIC INFORMATION
Projection: UTM ZONE 29 NORTH CENTRAL MERIDIAN 9° WEST
Vertical Datum: Adgebralty Chart Datum
Geoidetic Datum: WGS84

No.	Revision/Issue	Date
	Rev 1.1	02/03/18
	Rev 1.2	25/07/18

Firm Name and Address

DeepSea Fibre Networks Ltd
15 The Seapoint Building,
Clontarf Road,
Dublin 3
Tel: +353-1-8536500
www.deepsea-fibre.com

Project Name:
WINS SUBSEA CABLE SYSTEM
ROUTE CORRIDOR SURVEY DATA
ALIGNMENT SHEET KP30 - KP45
Project Number: 1317
Foreshore Licence Ref: FS006838

Data collected: INFOMAR/INSS/MDM DATA 02-17	Sheet 1317-WINS-AL-03
Drawing issued: 26 JULY 2018 Drafted by: Kevin Whyte	
Scale 1:25,000	Plot size ISD A1