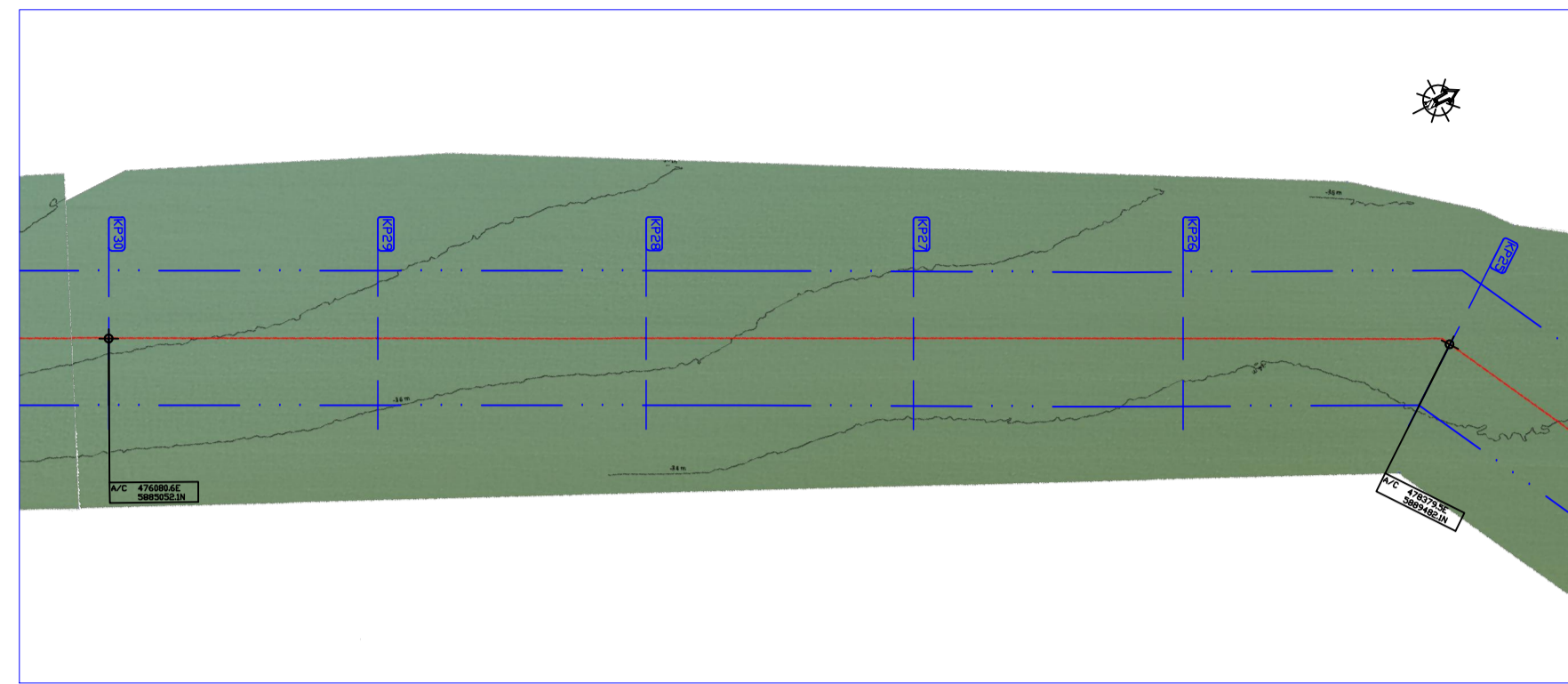
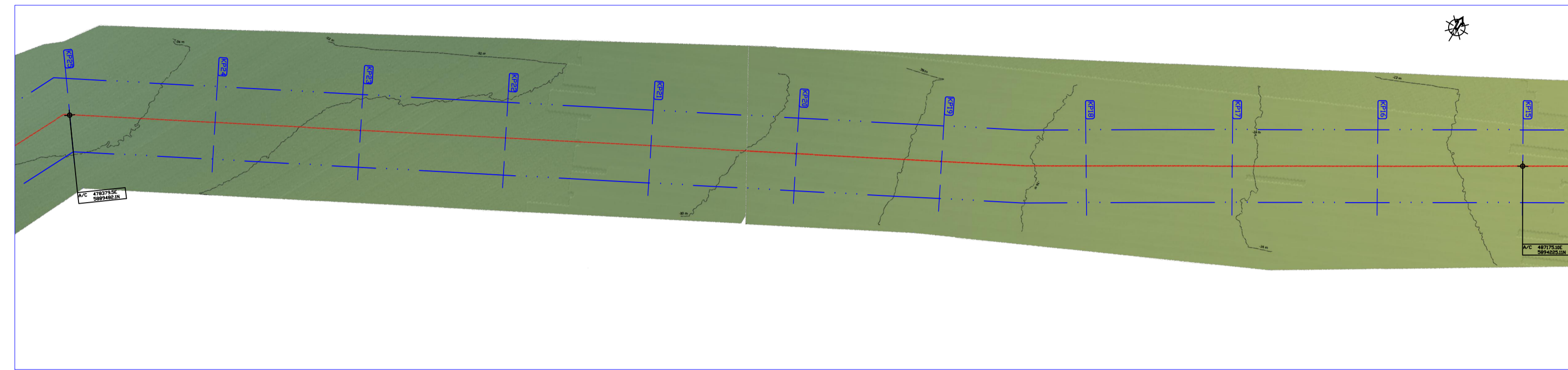


A: BATHYMETRY

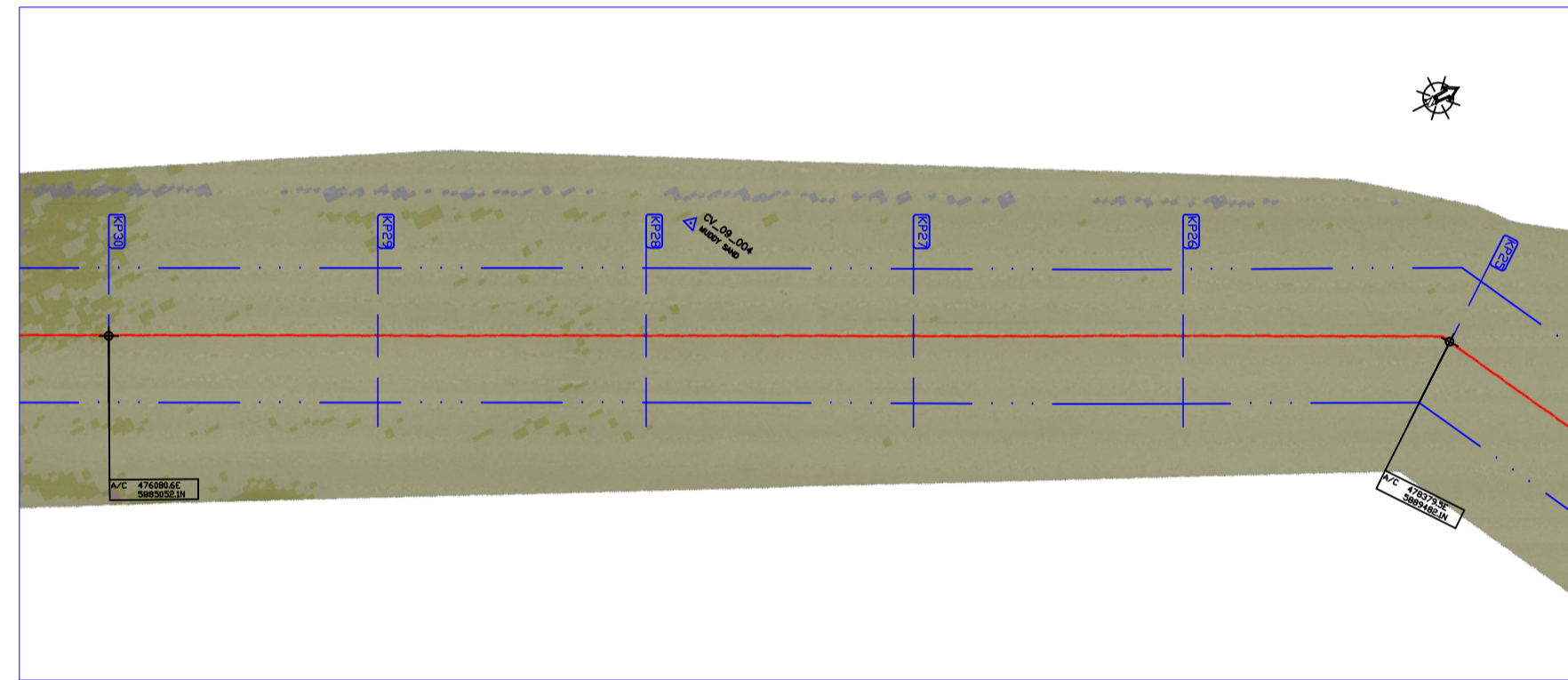


KP30 - KP25

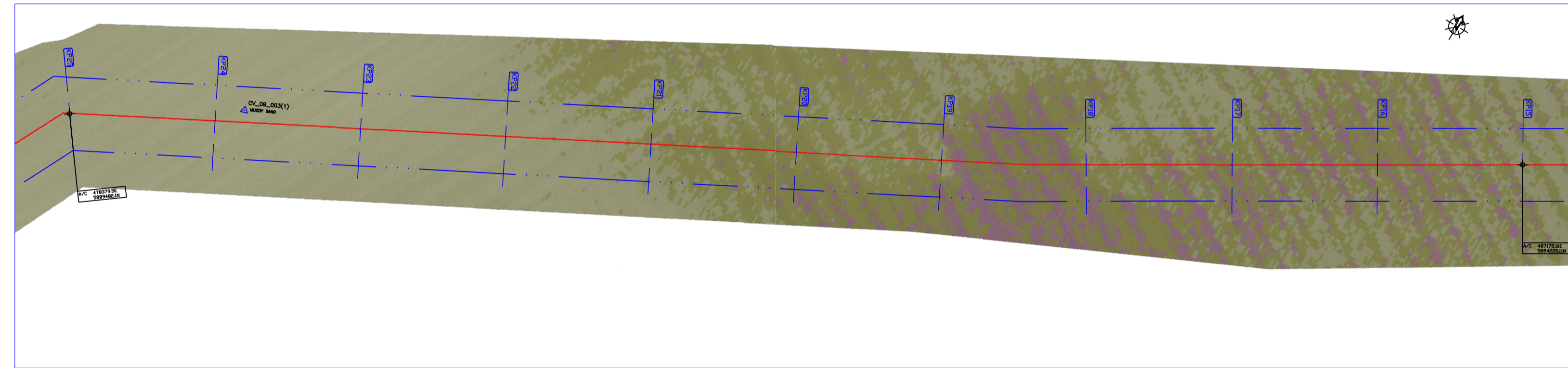


KP25 - KP15

B: SEABED FEATURES

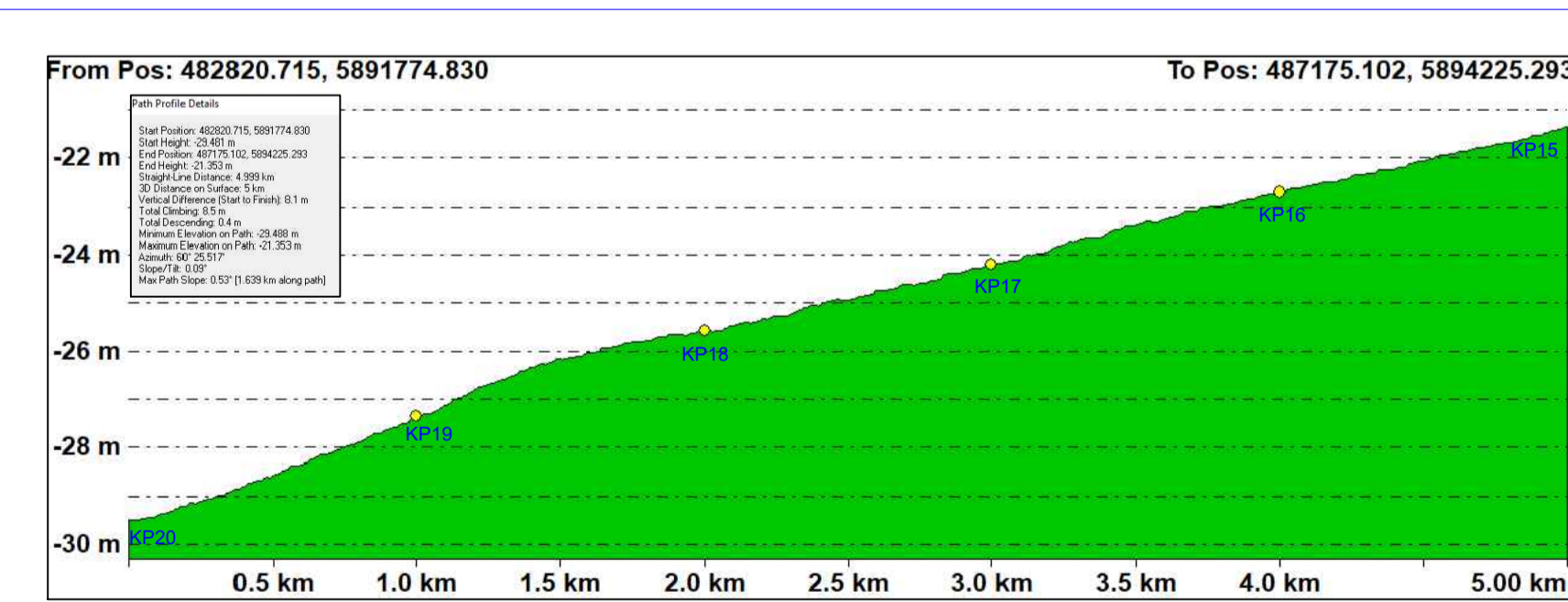
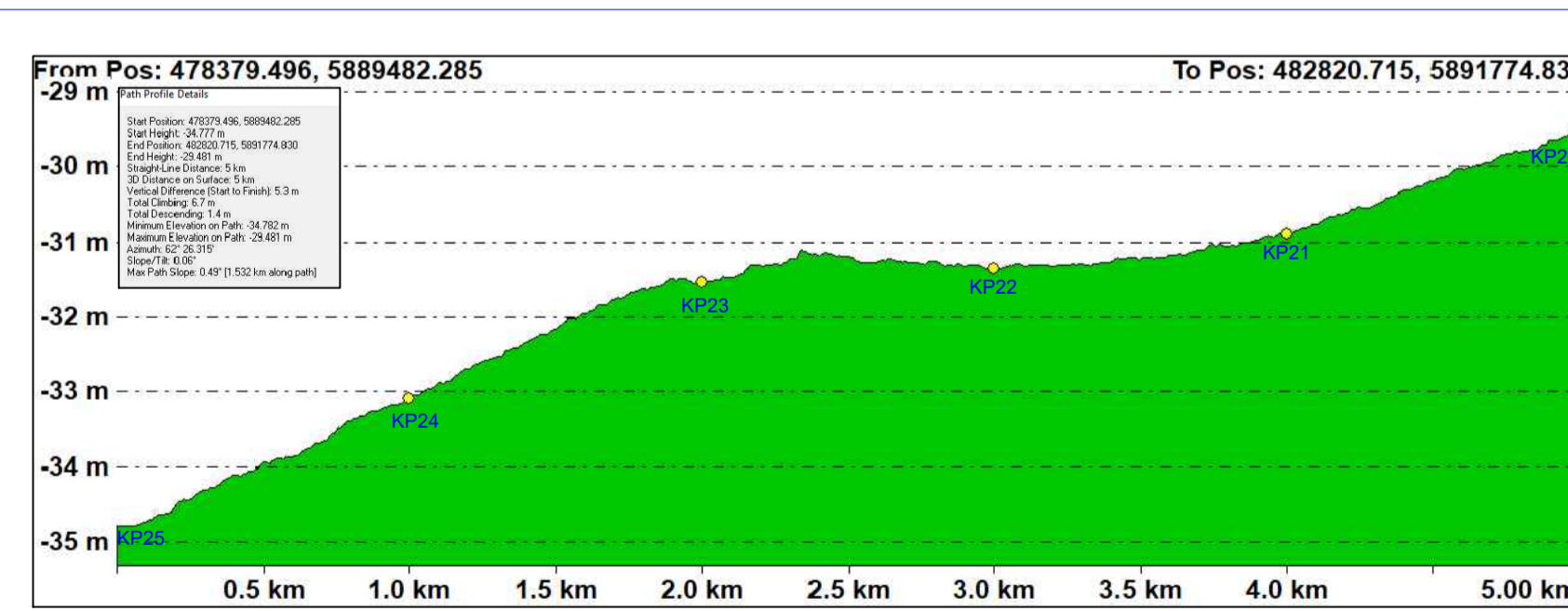
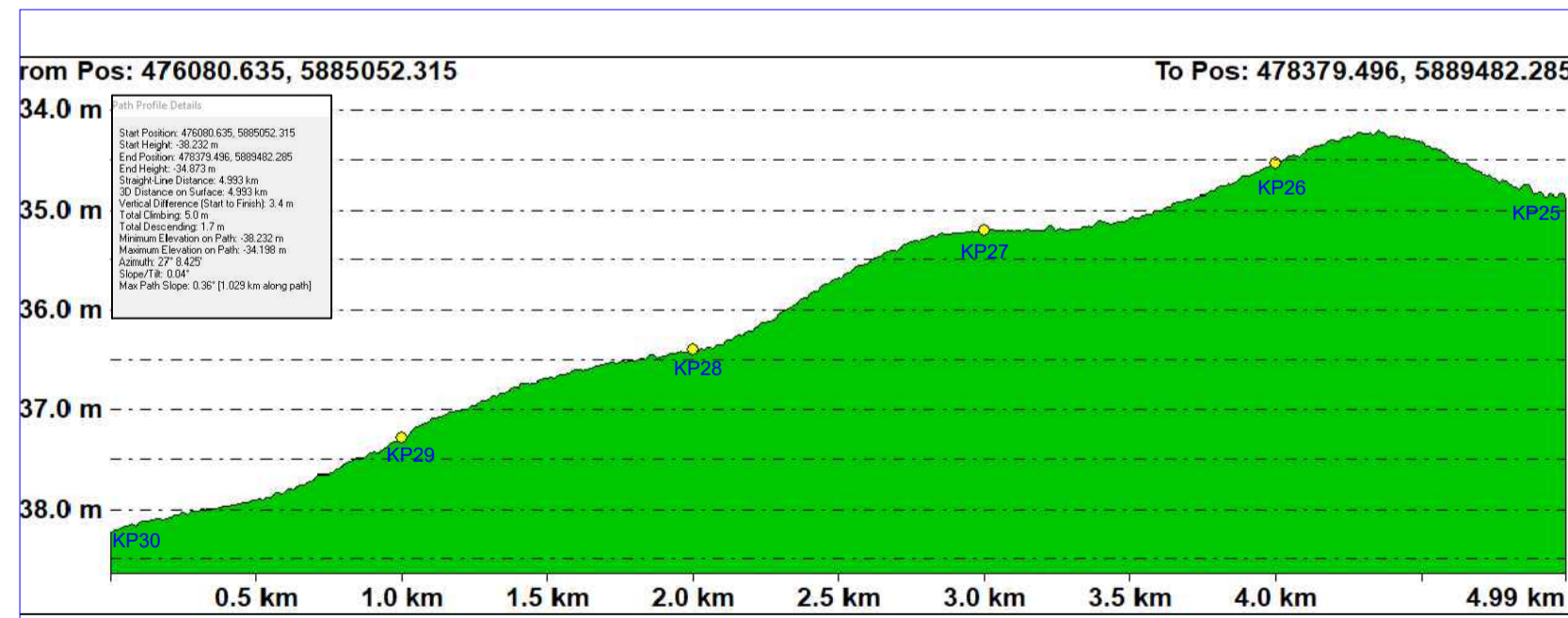


KP30 - KP25

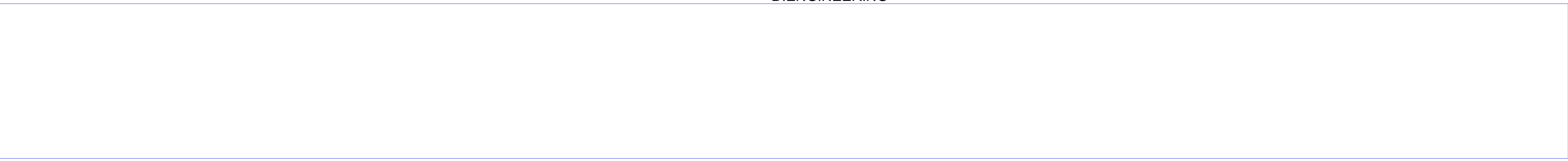


KP25 - KP15

C: INTERPRETED LONGITUDINAL BATHYMETRIC PROFILE



D: ENGINEERING



General Notes

- HIGH WATER MARK (H.W.M.)
- PROPOSED CABLE ROUTE
- KILOMETRE MARKER POST
- ROUTE CORRIDOR (500M)
- 12 NAUTICAL MILE LIMIT
- ROUTE POINT POSITION

A: BATHYMETRY  
SPOT DEPTHS IN METRES LAT  
BATHYMETRY CONTOURS REDUCED TO METRES LAT  
ALL DIMENSIONS IN METRES

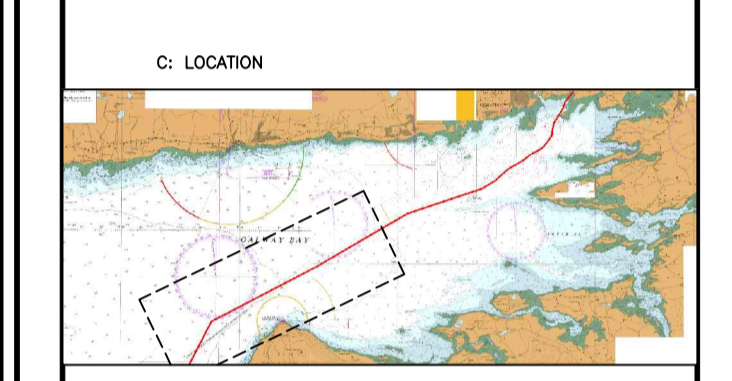
B: SEABED FEATURES

- No Data
- Class 6 Silt
- Class 5 Rock
- Class 4 Rock (High Texture)
- Class 3 Coarse to Coarse Grains
- Class 2 Coarse to Medium Sand
- Class 1 Fine Sands to Mud
- SAND WAVE CREST

BOULDER (HEIGHT IN METRES AND ID)  
DEBRIS (DIMENSIONS LxWxH AND ID)  
AREA OF DEBRIS  
LINEAR DEBRIS (LENGTH IN METRES AND ID)  
WRECK (AS FOUND POSITION, DIM'S IN METRES AND ID)  
WRECK WITH POSITION FROM CLIENT AND ID  
MAGNETOMETER ANOMALY IN HT AND ID  
CABLE (AS FOUND POSITION)  
CPT LOCATION AND ID  
SEABED SAMPLE LOCATION AND ID

MDM  
McMahon Design & Management Ltd.  
17 The Esplanade Building, Chapel Hill, Dublin 7  
Tel: +353-1-4531066 Fax: +353-1-4531068  
Email: info@mdm.ie www.mdm.ie

INFOMAR



DO NOT SCALE FROM THIS DRAWING  
NO LIABILITY FOR OMISSION, ERRORS OR EXCEPTIONS WILL BE ACCEPTED BY DEEPTSEA FIBRE NETWORKS LTD

GEODETIC INFORMATION  
Projection: UTM ZONE 29 NORTH CENTRAL MERIDIAN 9° WEST  
Vertical Datum: Adgebralty Chart Datum  
Geoidetic Datum: WGS84

No.	Revision/Issue	Date
	Rev 1.1	02/03/18
	Rev 1.2	25/07/18

Firm Name and Address

DeepSea Fibre Networks Ltd  
15 The Seapoint Building,  
Clontarf Road,  
Dublin 3  
Tel: +353-1-8536500  
www.deepseafibre.com

Project Name:  
WINS SUBSEA CABLE SYSTEM  
ROUTE CORRIDOR SURVEY DATA  
ALIGNMENT SHEET KP15 - KP30  
Project Number: 1317  
Foreshore Licence Ref: FS006838

Date collected: INFOMAR/INSS/MDM DATA 02-17 Sheet: 1317-WINS-AL-02  
Drawing issued: 15 APRIL 2018  
Drafted by: Kevin Whyte  
Scale: 1:25,000 Plot size: ISD A1