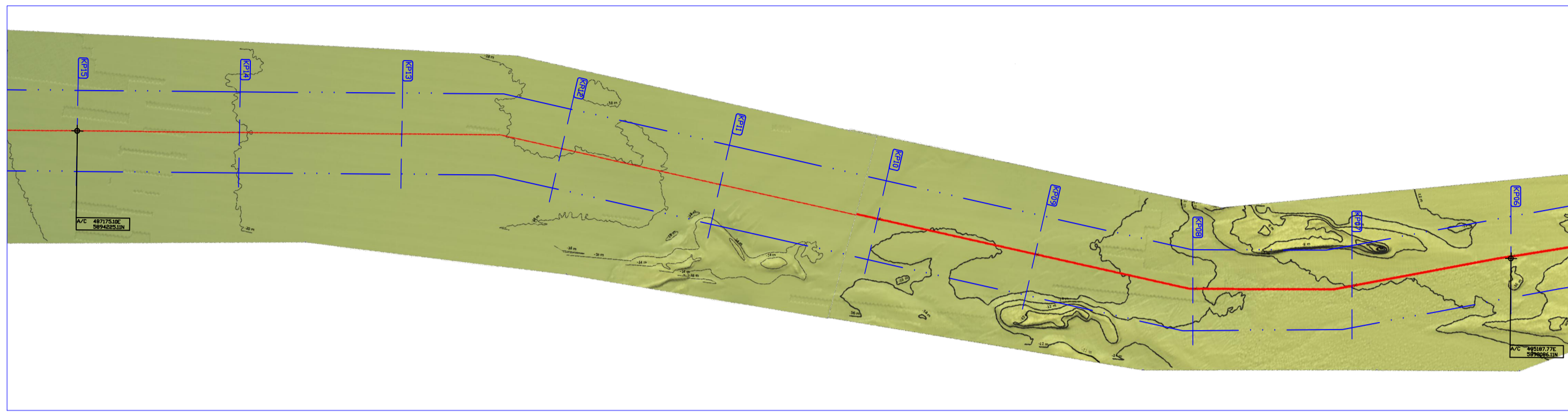
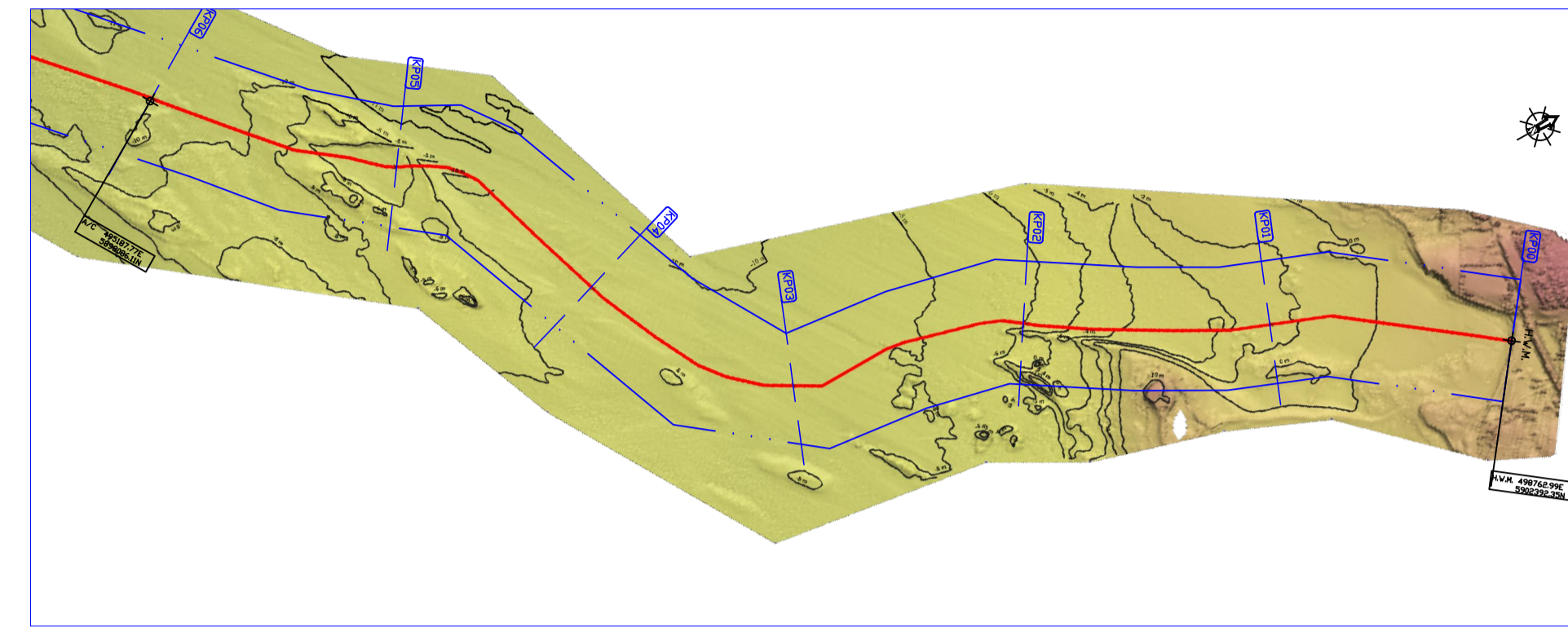


A: BATHYMETRY

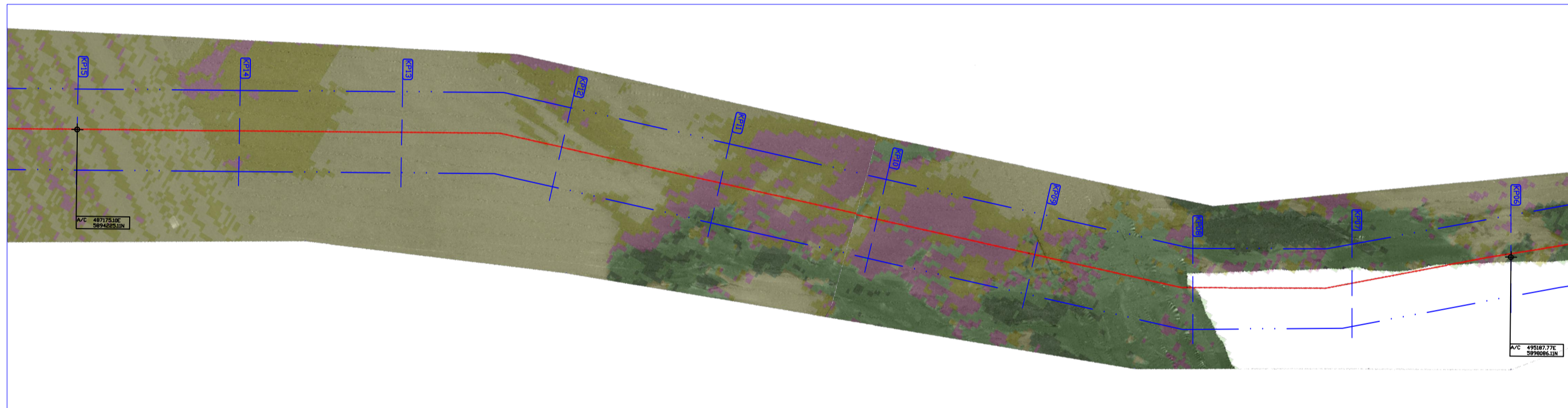


KP15 - KP06

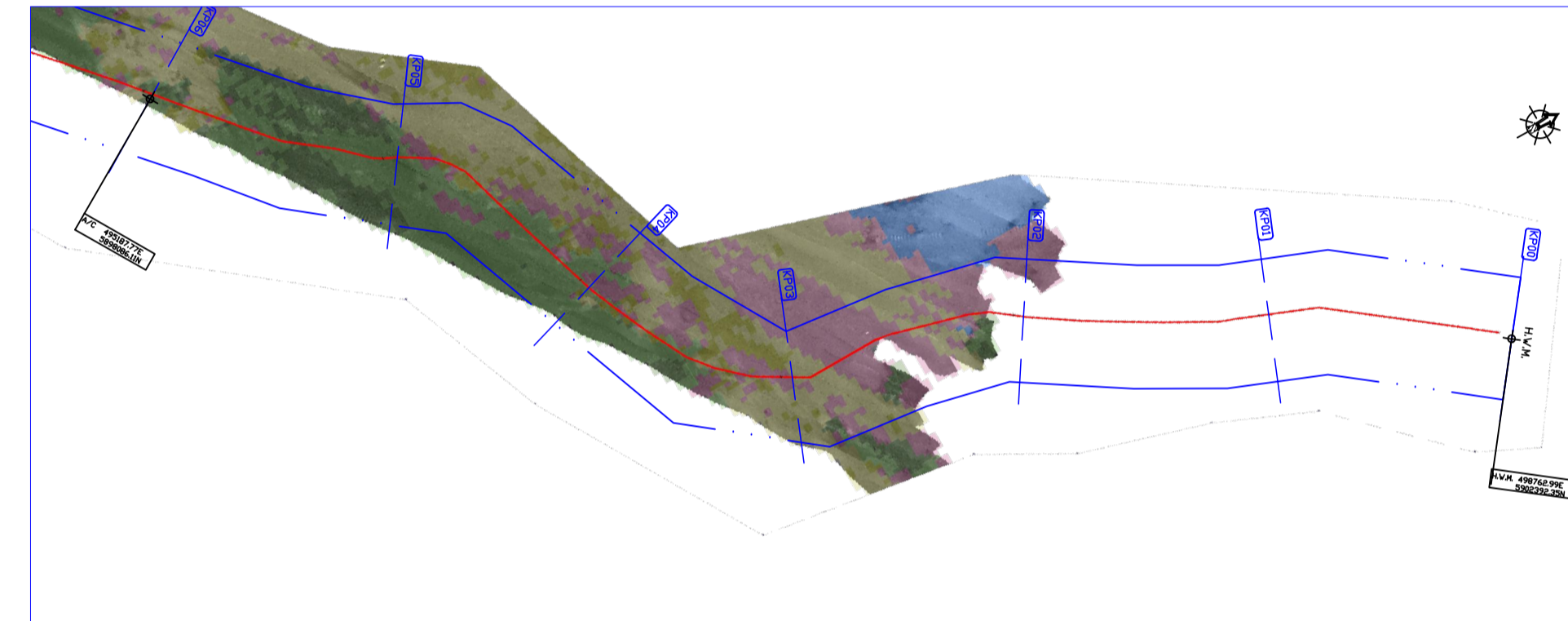


KP06 - KP00

B: SEABED FEATURES

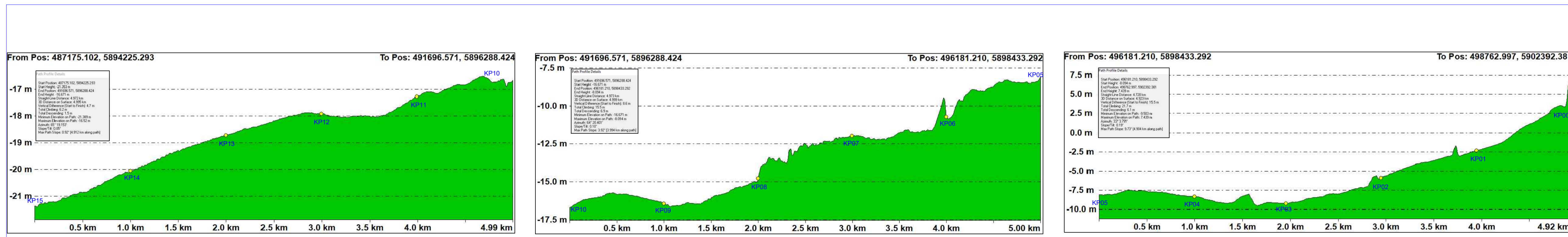


KP15 - KP06



KP06 - KP00

C: INTERPRETED LONGITUDINAL BATHYMETRIC PROFILES



D: ENGINEERING



General Notes

- HIGH WATER MARK (H.W.M.)
- PROPOSED CABLE ROUTE
- KILOMETRE MARKER POST
- ROUTE CORRIDOR (500M)
- 12 NAUTICAL MILE LIMIT
- ROUTE POINT POSITION

A: BATHYMETRY
 SPOT DEPTHS IN METRES LAT
 BATHYMETRY CONTOURS REDUCED TO METRES LAT
 ALL DIMENSIONS IN METRES

B: SEABED FEATURES

- No Data
- Class 0 Silt
- Class 1 Rock
- Class 2 Coarse to Coarse Grains
- Class 3 Coarse to Medium Sand
- Class 4 Fine Sands to Mud
- SAND WAVE CREST

BOULDER (HEIGHT IN METRES AND ID)
AREA OF DEBRIS
WRECK (AS FOUND POSITION, DIM'S IN METRES AND ID)
WRECK WITH POSITION FROM CLIENT AND ID
MAGNETOMETER ANOMALY IN MET AND ID
CABLE (AS FOUND POSITION)
CPT LOCATION AND ID
SEABED SAMPLE LOCATION AND ID

MDM
 MacMahon Design & Management Ltd
 17 The Capelin Building, Chapel Hill, Dublin 3
 Tel: +353-1-4700666 Fax: +353-1-4700668
 Email: info@mdm.ie www.mdm.ie

INFOMAR

C: LOCATION

DO NOT SCALE FROM THIS DRAWING
 NO LIABILITY FOR OMISSION, OMISSIONS OR EXCEPTIONS WILL BE ACCEPTED BY DEESEA FIBRE NETWORKS LTD

GEODETIC INFORMATION
 Projection: UTM ZONE 29 NORTH CENTRAL MERIDIAN 9° WEST
 Vertical Datum: Adgeodetic Chart Datum
 Geoidetic Datum: WGS84

No.	Revision/Issue	Date
	Rev 1.1	02/03/18
	Rev 1.2	25/07/18

Firm Name and Address
 DeepSea Fibre Networks Ltd
 15 The Seapoint Building,
 Clontarf Road,
 Dublin 3
 Tel: +353-1-8536500
 www.deepseafibre.com

Project Name:
 WINS SUBSEA CABLE SYSTEM
 ROUTE CORRIDOR SURVEY DATA
 ALIGNMENT SHEET KP00 - KP15
 Project Number: 1317
 Foreshore Licence Ref: FS006838

Data collected: INFOMAR/INSS/MDM DATA 02-17	Sheet 1317-WINS-AL-01
Drawing issued: 26 JULY 2018 Drafted by: Kevin Whyte	
Scale 1:25,000	Plot size ISD A1