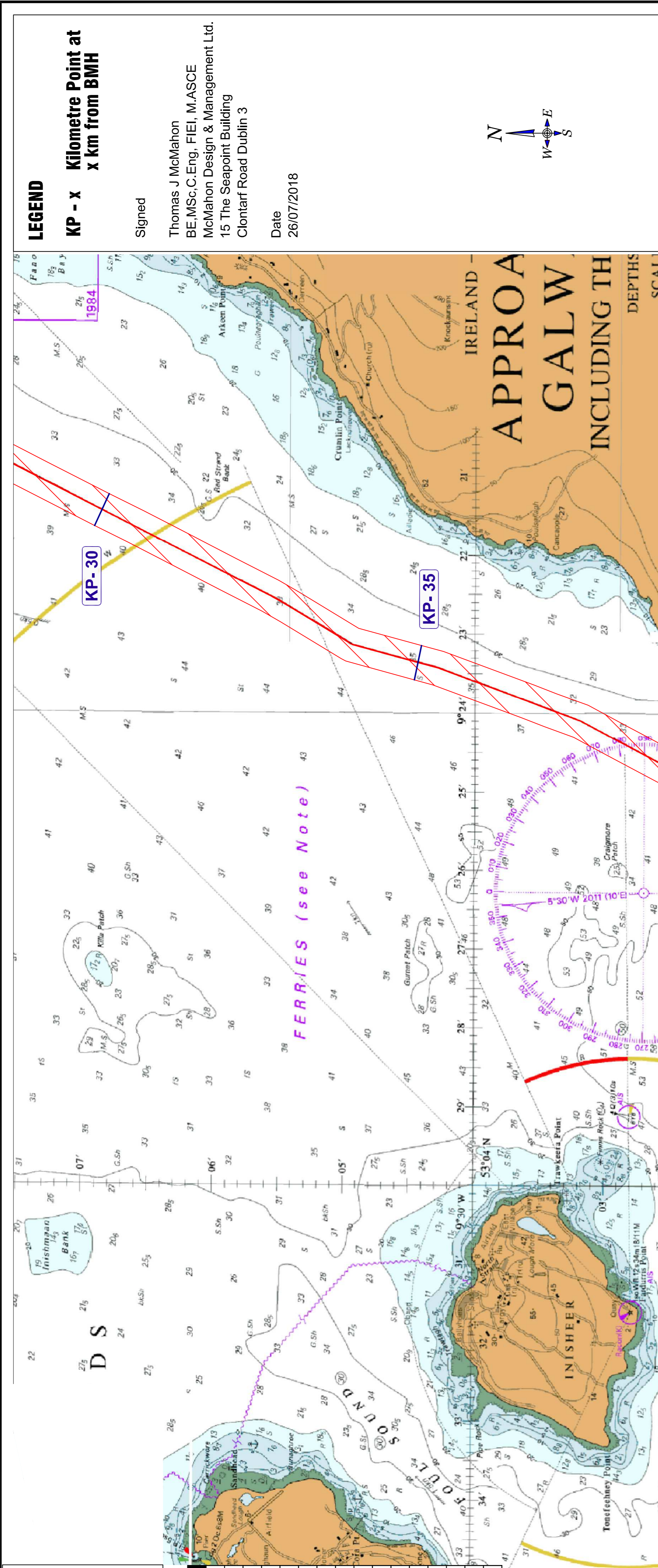


**Note:**  
 Area Subject to Foreshore Licence Application -  
 = 51.25km<sup>2</sup> (Outlined red)  
 Foreshore Area of Survey = 1.025km<sup>2</sup> (contained within survey corridor)  
 Proposed Survey corridor is 500m wide centred on the route  
 Nominal Main lay Swathe is 1.0m wide to the 12 NW limit and will be contained within the survey corridor

| TP | Longitude          | Latitude          | Heading   | Length    | Total Length |
|----|--------------------|-------------------|-----------|-----------|--------------|
| 38 | 53° 06' 6.6886" N  | 9° 22' 4.4479" W  | 1.236 km  | 31.465 km | 206.9°       |
| 39 | 53° 05' 31.0196" N | 9° 22' 34.4752" W | 1.244 km  | 32.701 km | 210.6°       |
| 40 | 53° 04' 56.4059" N | 9° 23' 8.5214" W  | 1.249 km  | 33.945 km | 195.0°       |
| 41 | 53° 04' 17.3738" N | 9° 23' 25.9196" W | 2.153 km  | 35.194 km | 200.3°       |
| 42 | 53° 03' 12.0617" N | 9° 24' 6.0699" W  | 3.129 km  | 37.347 km | 207.6°       |
| 43 | 53° 01' 42.3411" N | 9° 25' 23.8636" W | 1.019 km  | 40.476 km | 215.3°       |
| 44 | 53° 01' 15.4245" N | 9° 25' 55.4197" W | 956.53 m  | 41.495 km | 221.9°       |
| 45 | 53° 00' 52.3766" N | 9° 26' 29.6562" W | 776.05 m  | 42.452 km | 197.5°       |
| 46 | 53° 00' 28.4392" N | 9° 26' 42.1988" W | 884.89 m  | 43.228 km | 205.3°       |
| 47 | 53° 00' 2.5522" N  | 9° 27' 2.4525" W  | 675.81 m  | 44.113 km | 214.2°       |
| 48 | 52° 59' 44.4795" N | 9° 27' 22.8413" W | 834.71 m  | 44.789 km | 219.0°       |
| 49 | 52° 59' 23.4868" N | 9° 27' 50.9873" W | 442.06 m  | 45.623 km | 237.0°       |
| 50 | 52° 59' 15.6904" N | 9° 28' 10.8535" W | 1.035 km  | 46.065 km | 231.2°       |
| 51 | 52° 58' 54.7370" N | 9° 28' 54.1056" W | 573.88 m  | 47.1 km   | 226.5°       |
| 52 | 52° 58' 41.9488" N | 9° 29' 16.4026" W | 10.702 km | 47.674 km | 239.9°       |
| 53 | 52° 55' 48.1468" N | 9° 37' 32.1538" W | 14.659 km | 58.376 km | 235.5°       |



**CLIENT**



**PROJECT** WINS  
**Ref:** FS006838

**TITLE**  
 Foreshore Licence Map 3  
 South Sound

| REV | DATE       | DESCRIPTION   |
|-----|------------|---------------|
| 02  | 26/07/2018 | Final Drawing |

**PROJECT NUMBER**  
 1317

**DRAWING NUMBER**  
 1317-A-104

| DRAWN BY    | SCALE         |
|-------------|---------------|
| DF          | 1:40,000 @ A1 |
| CHECKED BY  | SCALE         |
| MCM         | 1:80,000 @ A3 |
| APPROVED BY | SCALE         |
| TLM         | 1:80,000 @ A3 |




McMahon Design & Management Ltd.  
 - Consulting Engineers - Project Managers -  
 15 The Strand Building, Clontarf, Dublin 3  
 Tel: +353-1-2060000 Fax: +353-1-2060000

**Legend**  
 KP - x Kilometre Point at x km from BMH

Signed  
 Thomas J McMahon  
 BE NSc, C.Eng, FIEI, M.ASCE  
 McMahon Design & Management Ltd.  
 15 The Strand Building  
 Clontarf Road Dublin 3

Date  
 26/07/2018

**CLIENT**



**PROJECT** WINS  
**Ref:** FS006838

**TITLE**  
 Foreshore Licence Map 3  
 South Sound


**REV** **DATE** **DESCRIPTION**

|    |            |               |
|----|------------|---------------|
| 02 | 26/07/2018 | Final Drawing |
|----|------------|---------------|

**PROJECT NUMBER**  
 1317

**DRAWING NUMBER**  
 1317-A-104

| DRAWN BY    | SCALE         |
|-------------|---------------|
| DF          | 1:40,000 @ A1 |
| CHECKED BY  | SCALE         |
| MCM         | 1:80,000 @ A3 |
| APPROVED BY | SCALE         |
| TLM         | 1:80,000 @ A3 |



McMahon Design & Management Ltd.  
 - Consulting Engineers - Project Managers -  
 15 The Strand Building, Clontarf, Dublin 3  
 Tel: +353-1-2060000 Fax: +353-1-2060000

**Proposed Inshore Corridor for the WINS Cable at Galway**  
 Scale  
 1:40,000 @ A1  
 1:80,000 @ A3

**Chart Information:**  
 Depths are in metres and are reduced to Chart Datum, while Heights are in feet and are reduced to Mean High Water Springs. All other heights are above Mean High Water Springs. Positions are referred to the WGS84 compatible datum. (CAUTION - see CHART ACCURACY NOTE).  
 CHART 22: To approach the light positions read from the names EASTWARD.  
 CHART 23: To approach the light positions read from the names EASTWARD.  
 CHART 24: To approach the light positions read from the names EASTWARD.  
 CHART 25: To approach the light positions read from the names EASTWARD.  
 CHART 26: To approach the light positions read from the names EASTWARD.  
 CHART 27: To approach the light positions read from the names EASTWARD.  
 CHART 28: To approach the light positions read from the names EASTWARD.  
 CHART 29: To approach the light positions read from the names EASTWARD.  
 CHART 30: To approach the light positions read from the names EASTWARD.  
 CHART 31: To approach the light positions read from the names EASTWARD.  
 CHART 32: To approach the light positions read from the names EASTWARD.  
 CHART 33: To approach the light positions read from the names EASTWARD.  
 CHART 34: To approach the light positions read from the names EASTWARD.  
 CHART 35: To approach the light positions read from the names EASTWARD.  
 CHART 36: To approach the light positions read from the names EASTWARD.  
 CHART 37: To approach the light positions read from the names EASTWARD.  
 CHART 38: To approach the light positions read from the names EASTWARD.  
 CHART 39: To approach the light positions read from the names EASTWARD.  
 CHART 40: To approach the light positions read from the names EASTWARD.  
 CHART 41: To approach the light positions read from the names EASTWARD.  
 CHART 42: To approach the light positions read from the names EASTWARD.  
 CHART 43: To approach the light positions read from the names EASTWARD.  
 CHART 44: To approach the light positions read from the names EASTWARD.  
 CHART 45: To approach the light positions read from the names EASTWARD.  
 CHART 46: To approach the light positions read from the names EASTWARD.  
 CHART 47: To approach the light positions read from the names EASTWARD.  
 CHART 48: To approach the light positions read from the names EASTWARD.  
 CHART 49: To approach the light positions read from the names EASTWARD.  
 CHART 50: To approach the light positions read from the names EASTWARD.  
 CHART 51: To approach the light positions read from the names EASTWARD.  
 CHART 52: To approach the light positions read from the names EASTWARD.  
 CHART 53: To approach the light positions read from the names EASTWARD.  
 CHART 54: To approach the light positions read from the names EASTWARD.  
 CHART 55: To approach the light positions read from the names EASTWARD.  
 CHART 56: To approach the light positions read from the names EASTWARD.  
 CHART 57: To approach the light positions read from the names EASTWARD.  
 CHART 58: To approach the light positions read from the names EASTWARD.  
 CHART 59: To approach the light positions read from the names EASTWARD.  
 CHART 60: To approach the light positions read from the names EASTWARD.  
 CHART 61: To approach the light positions read from the names EASTWARD.  
 CHART 62: To approach the light positions read from the names EASTWARD.  
 CHART 63: To approach the light positions read from the names EASTWARD.  
 CHART 64: To approach the light positions read from the names EASTWARD.  
 CHART 65: To approach the light positions read from the names EASTWARD.  
 CHART 66: To approach the light positions read from the names EASTWARD.  
 CHART 67: To approach the light positions read from the names EASTWARD.  
 CHART 68: To approach the light positions read from the names EASTWARD.  
 CHART 69: To approach the light positions read from the names EASTWARD.  
 CHART 70: To approach the light positions read from the names EASTWARD.  
 CHART 71: To approach the light positions read from the names EASTWARD.  
 CHART 72: To approach the light positions read from the names EASTWARD.  
 CHART 73: To approach the light positions read from the names EASTWARD.  
 CHART 74: To approach the light positions read from the names EASTWARD.  
 CHART 75: To approach the light positions read from the names EASTWARD.  
 CHART 76: To approach the light positions read from the names EASTWARD.  
 CHART 77: To approach the light positions read from the names EASTWARD.  
 CHART 78: To approach the light positions read from the names EASTWARD.  
 CHART 79: To approach the light positions read from the names EASTWARD.  
 CHART 80: To approach the light positions read from the names EASTWARD.  
 CHART 81: To approach the light positions read from the names EASTWARD.  
 CHART 82: To approach the light positions read from the names EASTWARD.  
 CHART 83: To approach the light positions read from the names EASTWARD.  
 CHART 84: To approach the light positions read from the names EASTWARD.  
 CHART 85: To approach the light positions read from the names EASTWARD.  
 CHART 86: To approach the light positions read from the names EASTWARD.  
 CHART 87: To approach the light positions read from the names EASTWARD.  
 CHART 88: To approach the light positions read from the names EASTWARD.  
 CHART 89: To approach the light positions read from the names EASTWARD.  
 CHART 90: To approach the light positions read from the names EASTWARD.  
 CHART 91: To approach the light positions read from the names EASTWARD.  
 CHART 92: To approach the light positions read from the names EASTWARD.  
 CHART 93: To approach the light positions read from the names EASTWARD.  
 CHART 94: To approach the light positions read from the names EASTWARD.  
 CHART 95: To approach the light positions read from the names EASTWARD.  
 CHART 96: To approach the light positions read from the names EASTWARD.  
 CHART 97: To approach the light positions read from the names EASTWARD.  
 CHART 98: To approach the light positions read from the names EASTWARD.  
 CHART 99: To approach the light positions read from the names EASTWARD.  
 CHART 100: To approach the light positions read from the names EASTWARD.