

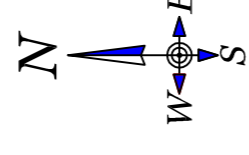
LEGEND

KP - x Kilometre Point at
x km from BMH

Signed

Thomas J McMahon
BE NSc, C.Eng., FIEI, M.ASCE
McMahon Design & Management Ltd.
15 The Seapoint Building
Clontarf Road Dublin 3

Date
26/07/2018



CLIENT



PROJECT

WINS

Ref: FS006838

TITLE

Foreshore Licence Map 2
Galway Bay

0 14/03/2018 Final Drawing

REV DATE DESCRIPTION

PROJECT NUMBER 1317

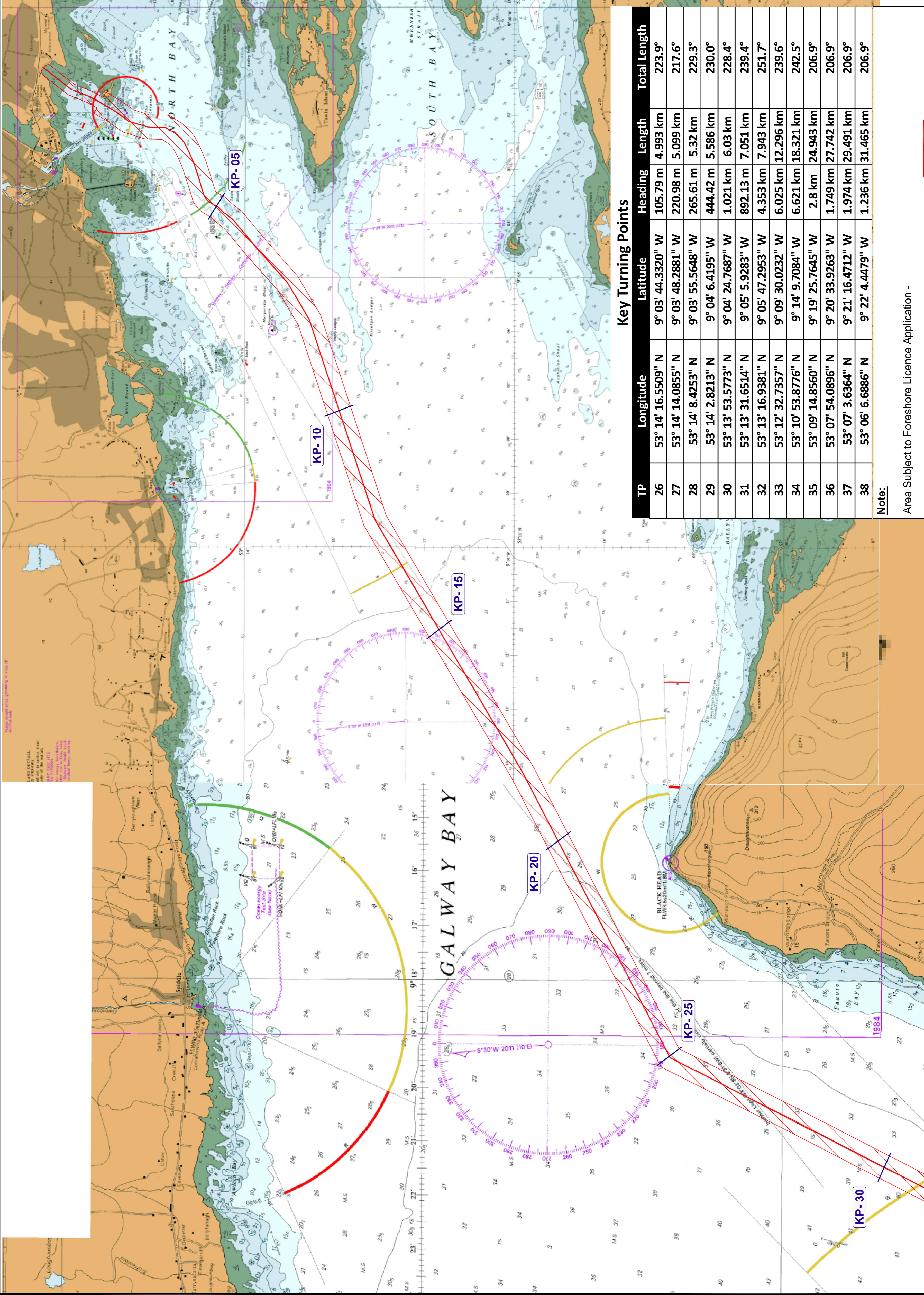
DRAWING NUMBER

1317-A-103

DRAWN BY DF SCALE

CHECKED BY MCM 1:40,000 @ A1

APPROVED BY TMCM 1:80,000 @ A3



Key Turning Points

TP	Longitude	Latitude	Heading	Length	Total Length
26	53° 14' 16.5509" N	9° 03' 44.3320" W	105.79 m	4.993 km	223.9°
27	53° 14' 14.0855" N	9° 03' 48.2881" W	220.98 m	5.099 km	217.6°
28	53° 14' 8.4253" N	9° 03' 55.5648" W	265.61 m	5.32 km	229.3°
29	53° 14' 2.8213" N	9° 04' 6.4195" W	444.42 m	5.586 km	230.0°
30	53° 13' 53.5773" N	9° 04' 24.7687" W	1.021 km	6.03 km	228.4°
31	53° 13' 31.6514" N	9° 05' 5.9283" W	892.13 m	7.051 km	239.4°
32	53° 13' 16.9381" N	9° 05' 47.2953" W	4.353 km	7.943 km	251.7°
33	53° 12' 32.7357" N	9° 09' 30.0232" W	6.025 km	12.296 km	239.6°
34	53° 10' 53.8776" N	9° 14' 9.7084" W	6.621 km	18.321 km	242.5°
35	53° 09' 14.8560" N	9° 19' 25.7645" W	2.8 km	24.943 km	206.9°
36	53° 07' 54.0896" N	9° 20' 33.9263" W	1.749 km	27.742 km	206.9°
37	53° 07' 3.6364" N	9° 21' 16.4712" W	1.974 km	29.491 km	206.9°
38	53° 06' 6.6886" N	9° 22' 4.4479" W	1.236 km	31.465 km	206.9°

Note:

Area Subject to Foreshore Licence Application -

Foreshore Area of Survey = 51.25km² (Outlined red)

Foreshore Area of Main Lay Cable = 1.025km² (contained within survey corridor)

Proposed Survey corridor is 500m wide centred on the route

Nominal Main lay Swathe is 1.0m wide to the 12 NW limit and will be contained within the survey corridor



Proposed Inshore Corridor for the WINS Cable at Galway

Scale
1:40,000 @ A1
1:80,000 @ A3