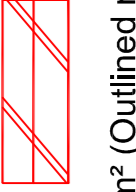
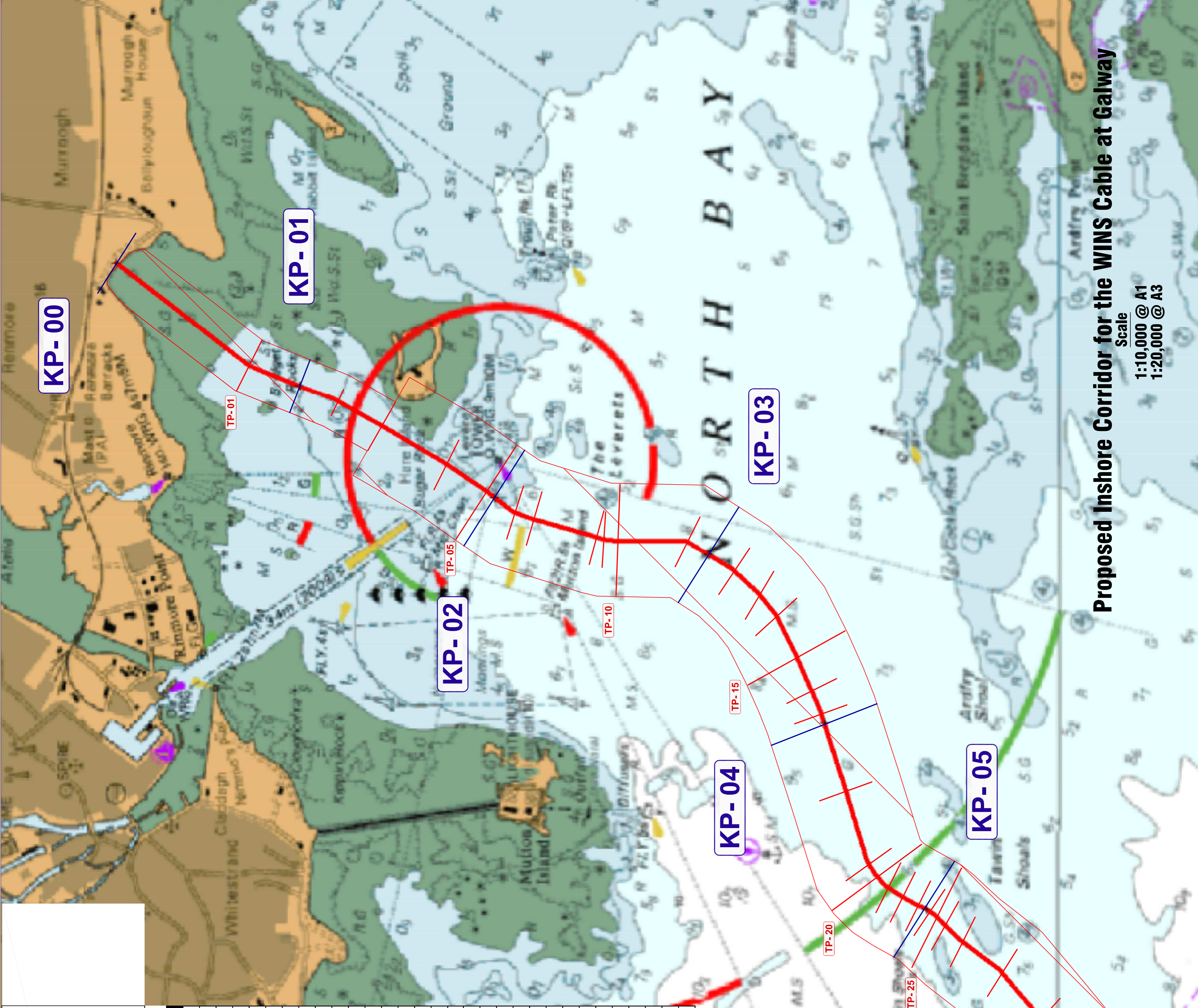


Note:

- Area Subject to Foreshore Licence Application - 
- Foreshore Area of Survey = 51.25km² (Outlined red)
- Foreshore Area of Main Lay Cable = 1.025km² (contained within survey corridor)
- Proposed Survey corridor is 500m wide centred on the route
- Nominal Main lay Swathe is 1.0m wide to the 12 NW limit and will be contained within the survey corridor

TP	Longitude	Latitude	Heading	Length	Total Length
0	53° 16' 14.7719" N	9° 01' 6.7752" W	739.96 m	----	217.6°
1	53° 15' 55.8108" N	9° 01' 31.1369" W	739.96 m	201.9°	201.9°
2	53° 15' 43.4545" N	9° 01' 39.4069" W	431.39 m	1.152 km	209.4°
3	53° 15' 36.9345" N	9° 01' 45.5372" W	333.68 m	1.383 km	210.7°
4	53° 15' 27.6553" N	9° 01' 54.7320" W	214.81 m	1.717 km	213.9°
5	53° 15' 21.8868" N	9° 02' 1.1921" W	154.12 m	1.931 km	217.3°
6	53° 15' 17.9220" N	9° 02' 6.2322" W	89.993 m	2.086 km	202.4°
7	53° 15' 15.2298" N	9° 02' 8.0788" W	285.8 m	2.176 km	195.6°
8	53° 15' 16.3256" N	9° 02' 12.2252" W	34.804 m	2.461 km	197.2°
9	53° 15' 3.2501" N	9° 02' 12.7799" W	63.902 m	2.496 km	188.4°
10	53° 15' 3.2052" N	9° 02' 13.2832" W	306.39 m	2.56 km	179.9°
11	53° 14' 53.2941" N	9° 02' 13.2585" W	243.43 m	2.866 km	210.7°
12	53° 14' 46.5248" N	9° 02' 19.9647" W	153.6 m	3.11 km	222.5°
13	53° 14' 42.8606" N	9° 02' 25.5594" W	121.84 m	3.263 km	231.9°
14	53° 14' 40.4273" N	9° 02' 30.7280" W	204.84 m	3.385 km	243.2°
15	53° 14' 37.4347" N	9° 02' 40.5835" W	154.9 m	3.59 km	246.1°
16	53° 14' 33.9532" N	9° 02' 48.2194" W	115.5 m	3.745 km	247.2°
17	53° 14' 30.4683" N	9° 03' 53.9592" W	356.37 m	3.861 km	252.4°
18	53° 14' 30.4683" N	9° 03' 12.2767" W	338.22 m	4.217 km	253.6°
19	53° 14' 27.3822" N	9° 03' 29.7736" W	68.214 m	4.555 km	237.0°
20	53° 14' 26.1793" N	9° 03' 32.8572" W	67.356 m	4.623 km	229.5°
21	53° 14' 24.7635" N	9° 03' 35.6178" W	75.401 m	4.691 km	213.0°
22	53° 14' 22.7173" N	9° 03' 37.8305" W	78.018 m	4.766 km	210.9°
23	53° 14' 20.5513" N	9° 03' 39.9896" W	58.068 m	4.844 km	204.3°
24	53° 14' 18.8400" N	9° 03' 41.2804" W	40.916 m	4.902 km	212.4°
25	53° 14' 17.7221" N	9° 03' 42.4612" W	50.147 m	4.943 km	223.8°
26	53° 14' 16.5509" N	9° 03' 44.3320" W	105.79 m	4.993 km	223.9°
27	53° 14' 14.0855" N	9° 03' 48.2881" W	220.98 m	5.099 km	217.6°
28	53° 14' 8.4253" N	9° 03' 55.5648" W	265.61 m	5.32 km	229.3°
29	53° 14' 2.8213" N	9° 04' 6.4195" W	444.42 m	5.586 km	230.0°
30	53° 13' 53.5773" N	9° 04' 24.7687" W	1.021 km	6.03 km	228.4°



Proposed Inshore Corridor for the WINS Cable at Galway
 Scale
 1:10,000 @ A1
 1:20,000 @ A3

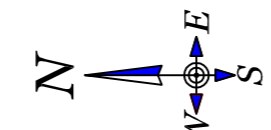
LEGEND

KP - x Kilometre Point at x km from BMH

Signed

Thomas J McMahon
 BE NSc, C.Eng, FIEI, M.ASCE
 McMahon Design & Management Ltd.
 15 The Seapoint Building
 Clontarf Road Dublin 3

Date
 26/07/2018



CLIENT



PROJECT

WINS

Ref: FS006838

TITLE

Foreshore Licence Map 1
 Inshore

REV

DATE

DESCRIPTION

02 26/07/2018 Final Drawing

PROJECT NUMBER

1317

DRAWING NUMBER

1317-A-102

DRAWN BY

DF

SCALE

1:10,000 @ A1

CHECKED BY

MCM

APPROVED BY

TJCM

1:20,000 @ A3

