



Rialtas na hÉireann  
Government of Ireland

# National Public Health Emergency Team (NPHET) for COVID-19 Governance Structures

26<sup>th</sup> June 2020

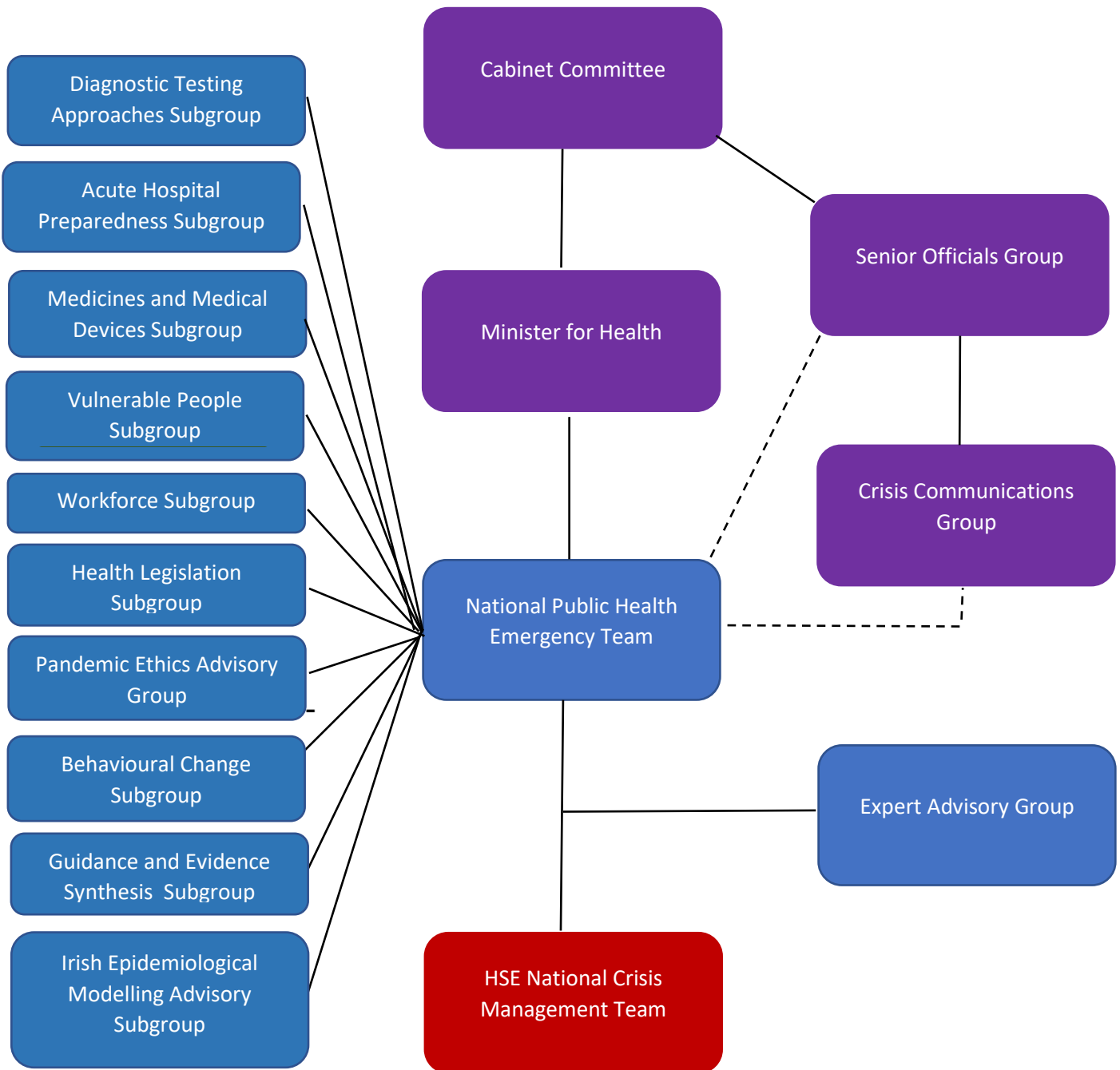
The information in this document is correct as at the date of the document.

Version control: This is the 2<sup>nd</sup> edition which supercedes the version published on 28<sup>th</sup> April 2020.

# Contents

- Overview Diagram of Governance for COVID-19** ..... 3
- Introduction** ..... 4
- The National Public Health Emergency Team (NPHEM)** ..... 6
  - Chair: ..... 6
- The Expert Advisory Group (EAG) to the NPHEM** ..... 7
- NPHEM Subgroups** ..... 8
  - Acute Hospital Preparedness Subgroup of NPHEM .....8
  - Behavioural Change Subgroup of NPHEM .....9
  - Guidance and Evidence Synthesis Subgroup of NPHEM .....10
  - Irish Epidemiological Modelling Advisory Group (IEMAG) - Subgroup of NPHEM .....11
  - Health Legislation Subgroup of NPHEM .....12
  - Medicines and Medical Devices Criticality Assessment Subgroups of NPHEM .....13
  - Pandemic Ethics Advisory Group - Subgroup of NPHEM .....14
  - Vulnerable People Subgroup of NPHEM .....14
  - Health Sector Workforce Subgroup of NPHEM .....15
  - Diagnostic Testing Approaches Subgroup of NPHEM .....16
- Wider Cross-Government COVID-19 Governance** ..... 17
  - Special Cabinet Committee on the Government Response to COVID-19 .....17
  - Crisis Communications Group .....18
  - HSE National Crisis Management Team .....18
- Appendix 1 – NPHEM Membership Details** ..... 19
- Appendix 2 – Expert Advisory Group Membership Details** ..... 20
- Appendix 3 – Subgroup Membership Details** ..... 22
  - Acute Hospitals .....22
  - Behavioural Change .....22
  - Guidance and Evidence Synthesis .....22
  - Irish Epidemiological Modelling Advisory Group (IEMAG) .....23
  - Health Legislation Subgroup .....24
  - Medicines and Medical Devices Criticality Subgroups .....24
  - Pandemic Ethics Advisory Group .....26
  - Vulnerable People Subgroup .....26
  - Health Sector Workforce Subgroup .....27
  - Diagnostic Testing Approaches .....27

## Overview Diagram of Governance for COVID-19



## Introduction

### **Purpose of this Document:**

This document provides an overview of the current governance structure in place for the National Public Health Emergency Team (NPHE) for COVID-19, the Expert Advisory Group (EAG) and NPHE subgroups.

### **Ireland's National Response to COVID-19:**

Ireland's national response to COVID-19 is supported by a dedicated governance structure to ensure a public health-led, whole-of-society approach.

The Government established the Special Cabinet Committee on COVID-19, chaired by the Taoiseach on 3<sup>rd</sup> March 2020. The Committee is supported by a Senior Officials Group and a dedicated Crisis Communications Group which coordinates a whole-of-Government communications response. Ireland's National Action Plan in response to COVID-19 (Coronavirus)<sup>1</sup> was published on 16<sup>th</sup> March 2020.

### **National Public Health Emergency Team (NPHE):**

The National Public Health Emergency Team (NPHE) is the mechanism for coordinating the health sector response to significant public health emergencies. It facilitates the sharing of information between the Department of Health and its agencies. It is a long-standing structure which has been utilised over many years to provide a forum to steer strategic approaches to public health emergencies in Ireland and mobilise the necessary health service responses. National Public Health Emergency Teams have been established in recent years in response to public health threats including H1N1 (swine flu) and CPE (Carbapenemase producing Enterobacteriales), for example. Recommendations and updates from National Public Health Emergency Teams are communicated to the relevant parties to inform policy and operational approaches, depending on the nature of the emergency. Key to this is the role of the Minister for Health, who receives recommendations and updates for consideration in terms of health policy and further consideration, if needed, for a wider cross-Government approach. This public health approach is in line with the advice of the World Health Organization (WHO).

The National Public Health Emergency Team (NPHE) for COVID-19 was established on 27<sup>th</sup> January 2020 in the Department of Health and is chaired by the Chief Medical Officer. The NPHE oversees and provides national direction, guidance, support and expert advice on the development and implementation of a strategy to contain COVID-19 in Ireland. It advises Government on the public health aspects of what is a cross-Government response to COVID-19 as informed by Ireland's National Action Plan in response to COVID-19 (Coronavirus), published on 16<sup>th</sup> March.

The NPHE's membership is multi-disciplinary and multi-sectoral in line with best international practice. Membership comprises representatives from across the health and social care service including the Department of Health (DOH), Health Service Executive (HSE), Health Protection Surveillance Centre (HPSC), Health Information and Quality Authority (HIQA), Health Products Regulatory Authority (HPRA) and others with relevant expertise in health and/or other related

---

<sup>1</sup> Available at: <https://www.gov.ie/en/publication/47b727-government-publishes-national-action-plan-on-covid-19/> Updated 16<sup>th</sup> March 2020

matters. Given the nature of the work involved, the need for a timely assessment and response and the flexibility in terms of the disease progression, the membership of the NPHET has evolved since January to encompass additional experts. This may change further over time in line with the expertise required across the response.

The Chief Clinical Officer, National Director of Acute Operations and National Director for Community Operations are among the representatives of the HSE. The NPHET also communicates directly and regularly with the HSE National Crisis Management Team which leads and manages the HSE's response.

This work is supported by an Expert Advisory Group and a number of subgroups; the Chairs of which are members of the NPHET. Expert advisors and/or other stakeholders are also invited to attend meetings from time to time.

In light of the seriousness of the COVID-19 pandemic and the pace of the health service response required, the NPHET currently holds one scheduled standing meeting each week and may meet more frequently if needed.

The NPHET applies high standards of governance in the conduct of its business. Actions, decisions and recommendations arising from NPHET meetings are made by consensus and on a collective basis. The specific actions, decisions and recommendations arising from each meeting are reviewed by the members present at the end of each meeting prior to adoption by the NPHET.

### **Communications and Transparency**

Directly following each meeting, the recommendations of the NPHET are communicated by letter to the Minister for Health for consideration, and these recommendations are used to assist Government in informing its decisions in responding to the public health emergency.

The relevant actions and decisions arising from each meeting are also communicated to the HSE CEO by letter on the day of the meeting.

The NPHET is committed to transparency in how it conducts its business. Actions and recommendations arising from the NPHET meetings are communicated publicly and are announced through press releases. In addition, the Department of Health and NPHET members provide regular media briefings to this end. Planned briefings are now scheduled twice each week. There is also a dedicated webpage on the Department of Health website<sup>2</sup> where agendas and minutes of previous meetings are published once approved by the NPHET. The NPHET Secretariat work diligently to finalise the minutes of the meetings as quickly as possible after the meetings, bearing in mind the pace of the current pandemic public health crisis.

In addition, the Department of Health COVID-19 response team continues to serve the political system, respond to queries and concerns from the public and proactively communicate via traditional and social media.

---

<sup>2</sup>NPHET Website: <https://www.gov.ie/en/collection/691330-national-public-health-emergency-team-covid-19-coronavirus/>

## The National Public Health Emergency Team (NPHET)

The National Public Health Emergency Team (NPHET) was established on the 27<sup>th</sup> January 2020 when it met for the first time. Secretariat is provided by the Department of Health.

There is a dedicated webpage for the NPHET available at: <https://www.gov.ie/en/collection/691330-national-public-health-emergency-team-covid-19-coronavirus/>

**Chair:** Dr Tony Holohan, Chief Medical Officer, Department of Health.

**Date Established:** 27<sup>th</sup> January 2020

**Date of First Meeting:** 27<sup>th</sup> January 2020

**Mandate:** The NPHET will oversee and provide direction, guidance, support and expert advice on the development and implementation of a strategy to contain coronavirus in Ireland. It facilitates the sharing of information between the Department of Health and its agencies. It provides a forum for agreement on strategic approaches to public health emergencies.

### Terms of Reference:

1. Oversee and provide direction, guidance, support and expert advice across the health service and the wider public service, for the overall national response to Coronavirus, including national and regional and other outbreak control arrangements.
2. Consider the most up to date national and international risk assessments and consider any implications for the national response.
3. Direct the collection and analysis of required data and information, as needed.
4. Review on an on-going basis the situational analyses and evaluation having regard to reports received, expert advice, international guidance and assurance regarding optimal use of resources.
5. Liaise with relevant organisations and stakeholders, to include other Government departments, statutory and voluntary agencies, international bodies and the relevant regulators.
6. Direct and ensure an effective communications system at local, regional and national levels.
7. Evaluate on an on-going basis the readiness of the health service to manage and sustain the containment of Coronavirus with a view to standing down the NPHET at the appropriate time, as determined by the Chair in consultation with the group.

**Membership:** The NPHET membership consists of representatives from the Department of Health (DOH), Health Service Executive (HSE), Health Protection Surveillance Centre (HPSC), Health Information and Quality Authority (HIQA), Health Products Regulatory Authority (HPRA) and other persons with relevant expertise in health and/or other matters. The Chair of the Expert Advisory Group of the NPHET Subgroups are members of the NPHET.

Expert advisors and/or other stakeholders may be invited to attend meetings from time to time.

## The Expert Advisory Group (EAG) to the NPHE

The Expert Advisory Group (EAG) was established on Wednesday 5<sup>th</sup> February 2020 and first met on that date. It is supported by secretariat from the Health Protection Surveillance Centre and the Department of Health.

There is a dedicated webpage available at: <https://www.gov.ie/en/collection/0f6a2-minutes-from-meetings-of-the-covid-19-expert-advisory-group/>

**Chair:** Dr Cillian de Gascun, Director, National Virus Reference Laboratory (NVRL)

**Date Established:** 5<sup>th</sup> February 2020

**Date of First Meeting:** 5<sup>th</sup> February 2020

**Mandate:** The Expert Advisory Group is an important source of independent, ongoing expert advice and support in public health emergencies.

### **Terms of Reference:**

Having regard to the national and international research and developments in relation to 2019-nCoV, and any other evidence it deems appropriate, the Expert Reference Group is asked:

1. To function as an expert sub-group of the National Public Health Emergency Team (NPHE) that will monitor and review this evidence and provide expert advice to the NPHE, the Health Service Executive and others as appropriate.
2. To review current advice and guidance on 2019-nCoV preparedness and response, identify gaps, and update and provide clear, evidence-based expert advice on preparedness and response.

**Membership:** The Expert Advisory Group is a multidisciplinary group with experts from all relevant medical and scientific specialities, leading experts from academia and a patient representative.

### **EAG Research Subgroup:**

A Research Subgroup was established by the Expert Advisory Group on 18<sup>th</sup> March 2020 to assist in its work.

**Chair:** Prof. Colm Bergin, Consultant Infectious Diseases, St. James's Hospital and Professor of Medicine, Trinity College Dublin.

**Date Established:** 18<sup>th</sup> March 2020

### **Terms of Reference:**

1. Interface with the EAG and NPHE to capture current and emerging priority research topics or cross-cutting issues and to consider how these can be actioned by Government Departments, agencies, the research community or other.
2. Explore and provide advice on potential collaborative opportunities to advance COVID-19 research, including opportunities at North-South, European and International levels.
3. Monitor and track developments and opportunities arising from the European Commission/Innovative Medicines Initiative research calls (and any future planned developments by DG Research and DG Sante).

**Membership:** The EAG Research Subgroup is a multidisciplinary group with representatives from the Department of Health, Health Service Executive, Health Research Board, Science Foundation Ireland and leading experts from academia.

## NPHET Subgroups

### Acute Hospital Preparedness Subgroup of NPHET

The Acute Hospital Preparedness Subgroup of NPHET was established on the 3<sup>rd</sup> March and met for the first time on 4<sup>th</sup> March 2020. Secretariat is provided by the Department of Health.

There is a dedicated webpage available at: <https://www.gov.ie/en/collection/32f5f-national-public-health-emergency-team-nphet-covid-19-subgroup-acute-hospital-preparedness/>

**Chair:** Ms Tracey Conroy, Assistant Secretary, Acute Hospitals Policy Division, Department of Health.

**Date Established:** 3<sup>rd</sup> March 2020

**Date of First Meeting:** 4<sup>th</sup> March 2020

**Mandate:** This subgroup of NPHET provides oversight and assurance on the preparedness of the acute hospital system to deal with a significant increase in hospital admissions and for the reception and care of those presenting with COVID-19.

#### Terms of Reference:

The subgroup will provide oversight and assurance that preparedness plans are in place and are being implemented across the public hospital system. In particular, the subgroup will provide assurance to the NPHET that the HSE has:

1. Developed a delivery model for the management of COVID-19 with a focus on isolation facilities in acute hospitals and developed proposals to access additional capacity.
2. Established a baseline of the critical care capacity and developed specific surge critical care capacity plans for each hospital and identified additional major surge critical care capacity. These plans should include consideration of ethical guidelines on patient pathways.
3. Considered the role of private hospitals to support business as usual, as well as additional capacity for treatment of COVID-19 patients.
4. Reviewed the preparedness of mortuary facilities.
5. Assessed the capacity and responsiveness of the National Ambulance Service (NAS) and any issues that arise in relation to national ambulance services.

**Membership:** The Acute Hospital Preparedness Subgroup is a multidisciplinary group with representatives from the Department of Health (DOH), Health Service Executive (HSE), National Purchase Treatment Fund (NPTF) and the private hospital sector.

**Current Position:** The intention to stand down this Subgroup was advised to the NPHET on 18 June, in the context of a review of its work since inception. This change recognises that in a more stable environment for acute hospitals with regard to COVID-19, it is timely to move to a more strategic focus on the challenges arising in both the short and long-term, within a wider integrated care



context. This will be part of ongoing engagement between the Department and the HSE. Accordingly the Acute Hospital Preparedness Subgroup was stood down following the meeting of 23 June 2020, with the proviso that it will be reconvened when and if required.

## **Behavioural Change Subgroup of NPHE**

A Behavioural Change Subgroup of NPHE was established on 18<sup>th</sup> March 2020. Secretariat is provided by the Department of Health.

There is a dedicated webpage available at: <https://www.gov.ie/en/collection/3008f6-the-national-public-health-emergency-team-nphet-covid-19-subgroup-be/>

**Chair:** Ms Kate O’Flaherty, Head of Health and Wellbeing, Department of Health.

**Date Established:** 18<sup>th</sup> March 2020

**Date of First Meeting:** 18<sup>th</sup> March 2020

**Mandate:** Ireland’s National Action Plan in response to COVID-19 recognises how, as a society, we must all adopt behaviours that enable us, as a society to interrupt transmission.

The most important actions we can all take, and sustain, are those related to hand washing, respiratory hygiene and social distancing, as well as following the most up-to-date public health advice on how to manage infection and self-isolation. In addition, the Plan recognises the importance of building and maintaining solidarity, community spirit and resilience across the population for the duration of the national COVID-19 response.

Behavioural science can provide vital insights and evidence to support communications and other interventions required to drive and sustain behavioural change, as well as respond to emerging concerns, including misunderstanding or non-adherence to public health guidance and message fatigue.

### **Terms of Reference:**

1. Provide evidence-based, expert analysis and advice from the national and international literature and research to understand key population behaviours and drivers
2. Establish robust processes to support the work of, and collaborate with, the Communications Group
3. Analyse data generated through research processes conducted to listen to the public (including through media and social media monitoring, qualitative research, data analytics) to understand and address emerging concerns
4. Establish processes, in collaboration with the Communications Group, to measure and analyse the impact of ongoing communications and interventions designed to drive behaviour change and support resilience
5. Design, implement and analyse rapid behavioural studies or other research measures to support optimal impact of ongoing communications and interventions, address emerging or anticipated issues and concerns, or as requested by NPHE
6. Collaborate with relevant partners to inform solutions to emerging issues

7. Provide timely analysis and advice to the Communications Group and to NPHEt to inform relevant decision-making and communications outputs
8. Agree Subgroup *modus operandi*
9. Report to NPHEt as required

**Membership:** The Behavioural Change Subgroup is a multidisciplinary group with representatives from the Department of Health (DOH), Economics and Social Research Institute (ESRI), Safefood, Sustainable Energy Authority of Ireland (SEAI) and leading experts from academia and clinical practice.

## **Guidance and Evidence Synthesis Subgroup of NPHEt**

The Guidance and Evidence Synthesis Subgroup of NPHEt was convened, following a recommendation by NPHEt, on the 16<sup>th</sup> March 2020. Secretariat is provided by the Department of Health.

There is a dedicated webpage available at: <https://www.gov.ie/en/collection/07d750-nphet-covid-19-subgroup-guidance-and-evidence-synthesis/>

**Chair:** Dr Máirín Ryan, Deputy Chief Executive and Director of Health Technology Assessment, Health Information and Quality Authority (HIQA)

**Date Established:** 16<sup>th</sup> March 2020

**Date of First Meeting:** 27<sup>th</sup> March 2020

**Mandate:** The NPHEt Subgroup on Guidance and Evidence Synthesis will report to NPHEt on the public health and clinical guidance relating to COVID-19, currently in development and to be developed in Ireland. In addition, the subgroup will provide assurance to the NPHEt on coordination of surge evidence synthesis capacity to support the development of guidance and to inform decision making by NPHEt and related bodies.

### **Terms of Reference:**

1. To coordinate information to support the development of public health and clinical guidance relating to COVID-19.
2. To coordinate surge evidence synthesis capacity to support the development of public health guidance.
3. To coordinate surge evidence synthesis capacity to support the development of models of care and clinical guidance (as determined and prioritised by the NPHEt and/or the HSE Office of the Chief Clinical Officer (CCO)).
4. To provide a mechanism to enable rapid evidence synthesis in response to the requirements of the Expert Advisory Group (EAG) reporting to the NPHEt.
5. To ensure capacity for evidence synthesis to support the work of the NPHEt as required.
6. To coordinate requests to HIQA for rapid Health Technology Assessment as required by NPHEt
7. To regular progress reports to the NPHEt on the work of the NPHEt Subgroup on Guidance and Evidence Synthesis.

**Membership:**

The Guidance and Evidence Synthesis Subgroup is made up of representatives from the Expert Advisory Group (EAG), Department of Health (DoH), Health Service Executive (HSE), Health Protection Surveillance Centre (HPSC), and Health Information and Quality Authority (HIQA).

**Irish Epidemiological Modelling Advisory Group (IEMAG) - Subgroup of NPHE**

The Irish Epidemiological Modelling Advisory Group (IEMAG) has been established as a subgroup of the NPHE on 11<sup>th</sup> March 2020. Secretariat is provided by the Department of Health.

There is a dedicated webpage available at <https://www.gov.ie/en/publication/dc5711-irish-epidemiology-modelling-advisory-group-to-nphet-technical-notes/>

**Chair:** Prof. Philip Nolan, President, National University of Ireland, Maynooth.

**Date Established:** 11<sup>th</sup> March 2020

**Date of First Meeting:** 11<sup>th</sup> March 2020

**Mandate:**

In response to the global pandemic COVID-19, and the acknowledged requirement to plan appropriately, the Chief Medical Officer (CMO) of the Department of Health (DOH) has established an expert group to provide advice and expertise in the area of epidemiology data modelling.

The objective of the group is to develop infectious disease mathematic modelling capacity to enable real time modelling of COVID-19 in the Irish population. This will inform and predict the likely impact in the short and medium term, and thus assist and enable evidence-based decisions on how best to respond to COVID-19.

The function of the group is in an advisory capacity reporting into the National Public Health Emergency Team (NPHE). The group will hereby be known as the COVID-19 Irish Epidemiological Modelling Advisory Group (IEMAG).

IEMAG organise its work through three working groups ((i) epidemiology modelling (ii) demand/ supply modelling and (iii) geospatial mapping), with regular plenary meetings.

**Terms of reference**

The COVID-19 IEMAG are tasked with providing expert advice to NPHE and the Department of Health in terms of COVID-19 epidemiology modelling including the following:

1. Gather evidence and monitor the epidemiological characteristics of the COVID-19 outbreak in Ireland and the pandemic internationally.
2. To develop epidemiological models to forecast the COVID-19 outbreak in the Republic of Ireland, monitor the impact of public health interventions, and model probable scenarios for numbers of new cases of COVID-19 over time.
3. To estimate the potential impact of COVID-19 on health services and health systems in the Republic of Ireland by developing a capacity and demand model and to investigate how best to utilise resource to meet expected demand.
4. To monitor and model the geospatial characteristics of the outbreak in Ireland.
5. Oversee the development of and reporting from a central COVID-19 data repository hosted by CSO (Central Statistics Office) and OSI(Ordinance Survey Ireland)

6. To collaborate with colleagues in Northern Ireland in support of the agreed programme of co-operation and collaboration
7. To engage with international counterparts to support this programme of work
8. To produce regular reports detailing the above information for presentation to the National Public Health Emergency Team (NPHE)
9. To perform such other analyses or provide other advice as may be required from time to time by the CMO or NPHE.

**Membership:** The group is chaired by Professor Philip Nolan who oversees a joined-up and comprehensive programme of data analysis and modelling work.

Membership comprises leading experts from academia, the Economic and Social Research Institute (ESRI), Health Service Executive (HSE), Health Protection Surveillance Centre (HPSC), Health Information and Quality Authority (HIQA) and others.

### **Health Legislation Subgroup of NPHE**

A Health Legislation Subgroup of NPHE was established on 6<sup>th</sup> March 2020. Secretariat is provided by the Department of Health.

**Chair:** Mr Colm Desmond, Assistant Secretary, Division of Corporate Legislation, Mental Health, Drugs Policy and Food Safety, Department of Health.

**Date Established:** 6<sup>th</sup> March 2020

**Date of First Meeting:** 10<sup>th</sup> March 2020

**Mandate:** The NPHE Subgroup on Health Legislation will assess existing legislative provisions which provide for necessary measures around public health/infectious diseases and whether they are sufficient for the purposes of addressing urgent needs which may arise in the present situation.

#### **Terms of reference**

1. Identify relevant legislation in the health sector applicable in a possible public health emergency;
2. Identify legislation in other departments which might be necessary to apply in a possible public health emergency;
3. Compile a comprehensive framework of specific provisions in 1. and 2. and obtain legal advice as to their applicability, or whether amendments may be required to (i) primary legislation (ii) by way of statutory instrument/regulation;
4. Assess drafting and other capacity requirements for any legal measures;
5. Make recommendations to COVID-19 Co-ordination Group on necessary measures, and agree drafting capacity requirements within DOH, other departments, and with AGO/OPC;
6. Agree a communications statement around necessary legal measures;
7. Agree Subgroup Modus Operandi for progressing TOR;
8. Report to NPHE through (i) progress updates, (ii) recommended action based on the phases advised.

**Membership:** The Health Legislation Subgroup is made up of representatives from the Department of Health (DOH), Department of Justice and Equality (DJE), Department of Housing, Planning and Local Government (DHPLG), Department of Children and Youth Affairs (DCYA), Department of Education and Skills (DES), Office of the Attorney General, Office of the Parliamentary Counsel and other Government Departments, as required.

## **Medicines and Medical Devices Criticality Assessment Subgroups of NPHE**

The Medicines and Medical Devices Criticality Assessment Subgroups of NPHE was established on the 3<sup>rd</sup> March 2020 and met for the first time on 5<sup>th</sup> March. Secretariat is provided by the Department of Health.

**Chair:** Mr Fergal Goodman, Assistant Secretary, Primary Care Division, Department of Health

**Date Established:** 3<sup>rd</sup> March 2020

**Date of First Meeting:** 5<sup>th</sup> March 2020

**Mandate:** The Medicines Criticality Assessment Group and the Medical Devices Criticality Assessment Group were previously set up as subgroups to the Department of Health Brexit operation group, chaired by HSE/HPRA, to work on Brexit related supply issues. The groups have now been requested to refocus their efforts on COVID-19 related medicines and medical devices supply issues and shortages. For all COVID-19 related work, the groups will be considered subgroups of the National Public Health Emergency Team (NPHE).

**Terms of Reference:** The Medicines Criticality Assessment Subgroup and Medical Devices Criticality Assessment Subgroup will:

1. Establish extent of the availability of medicines and medical devices used in the following:
  - Diagnosis of COVID-19 (as per agreed diagnostic strategies) (including testing equipment)
  - Treatment of COVID-19 (Antivirals)
  - Treatment of secondary bacterial infections in patients with COVID-19 (pneumonia etc)
  - Supportive Treatments used in patients with COVID-19
    - Treatments to manage disease at home
    - Treatments to manage disease in hospitals, including in ICU care
    - Devices and consumables used
  - Personal Protection
2. Conduct ongoing horizon scanning activities to ensure that any potential medicines and medical devices shortages caused by COVID-19 related issues and any potential medicines, device or equipment shortages not directly related to COVID-19 but which could have a high impact on patients and healthcare professionals, are identified as early as possible
3. Oversee the response to medicines and medical devices shortages caused by COVID-19 related issues and any medicines, device or equipment shortages not directly related to COVID-19 but which could have a high impact on patients and healthcare professionals

**Membership:** The Medicines Criticality Assessment Group and Medical Devices Criticality Assessment Group comprises members from the Department of Health (DoH), Health Products Regulatory Authority (HPRA) and Health Service Executive (HSE).

## **Pandemic Ethics Advisory Group - Subgroup of NPHE**

A Pandemics Ethics Advisory Group (PEAG) has been established on 19<sup>th</sup> March 2020. Secretariat is provided by the Department of Health.

There is a dedicated webpage available at: <https://www.gov.ie/en/collection/504017-nphet-covid-19-subgroup-pandemic-ethics-advisory-group-peag/>

**Chair:** Dr Siobhán O’Sullivan, Chief Bioethics Officer, Department of Health

**Date Established:** 19<sup>th</sup> March 2020

**Date of First Meeting:** 23<sup>rd</sup> March 2020

**Mandate:** The purpose of the Pandemic Ethics Advisory Group is to act as an advisory body to Government, policymakers and health service providers.

### **Terms of reference:**

1. To function as an expert sub-group of the National Public Health Emergency Team (NPHE) that will review and answer ethical questions relating to COVID-19 preparedness and response.
2. To provide expert ethical advice to the NPHE, the Department of Health, the HSE and others as appropriate.

**Membership:** The Pandemics Ethics Advisory Group (PEAG) is a multidisciplinary group with representatives from the Department of Health (DOH), Irish Patients Association, advocacy groups and leading experts from academia and clinical practice. The membership of PEAG will be kept under review and can be supplemented if additional expertise is required.

## **Vulnerable People Subgroup of NPHE**

The Vulnerable People Subgroup of NPHE was established on the 3<sup>rd</sup> March 2020. Secretariat is provided by the Department of Health.

There is a dedicated webpage available at: <https://www.gov.ie/en/collection/301f5e-the-national-public-health-emergency-team-nphet-subgroup-vulnerable-/>

**Chair:** Dr Kathleen MacLellan, Assistant Secretary, Social Care Division, Department of Health

**Date Established:** 3<sup>rd</sup> March 2020

**Date of First Meeting:** 6<sup>th</sup> March 2020

**Mandate:** To provide oversight and assurance with regard to the specific preparedness, measures and actions that need to be taken to protect vulnerable groups and individuals in society. An integrated cross-Government approach is being taken by the Subgroup with the responsibility for the

implementation of actions to support the vulnerable groups remaining with the relevant Department/Agency.

The term vulnerable people is being used to include older people, people with a disability, mental health service users, those with an underlying illness or condition, children in care and those accessing social inclusion services (not an exhaustive list).

**Terms of Reference:**

1. Identify categories of vulnerable people
2. Identify State Agencies responsible for service provision
3. Design a standardised checklist to provide assurance that measures are in place, updated in line with NPHEP directions, approved at appropriate senior level<sup>3</sup> and implemented. Such measures are likely to include:
  - Guidance for service users, families and staff
  - Communications plan
  - Compliance with data protection regulations
  - Preparedness plan to include containment measures; mitigation measures; hand hygiene, personal protective equipment (PPE) and waste management; environmental cleaning; patient/people placement where relevant - moving of patients/people in the facility, visitor access
  - Capacity Contingency Plan
  - Business Continuity Plan.
4. Establish communication processes for completed standardised checklist to the Subgroup
5. Design the Subgroup Assurance Framework
6. Agree Subgroup Modus Operandi
7. Report to NPHEP:
  - Progress Updates
  - Escalation of high risks as appropriate.

**Membership:** The Vulnerable People Subgroup is a multidisciplinary group with representatives from the Department of Health (DOH), Health Service Executive (HSE), Department of Justice and Equality (DJE), Department of Defence (DOD), Department of Housing, Planning and Local Government (DHPLG), Department of Children and Youth Affairs (DYCA), Department of Rural and Community Development (DRCD), Department of Education and Skills (DES), Department of Finance (DOF), Department of Public Expenditure and Reform (DPER), the Voluntary Sector, other Agencies, Regulator(s) and a public representative

### **Health Sector Workforce Subgroup of NPHEP**

The Health Sector Workforce Subgroup of NPHEP was established on 5<sup>th</sup> March 2020. Secretariat is provided by the Department of Health.

---

<sup>3</sup> Responsibility to ensure that all content and actions are in line with NPHEP directions lies with the relevant Departments/Agencies.

There is a dedicated webpage available at: <https://www.gov.ie/en/collection/fdb0c7-national-public-health-emergency-team-nphet-covid-19-subgroup-workfo/>

**Chair:** Mr Paul Bolger, Director, Resources Division, Department of Health.

**Date Established:** 5<sup>th</sup> March 2020

**Date of First Meeting:** 6<sup>th</sup> March 2020

**Mandate:** The Mandate for the Workforce Subgroup is in line with Action 6 of Ireland’s National Action Plan in response to COVID-19 to ensure the “*Expanding and protecting of our health workforce and essential workers*”.

**Terms of Reference:**

*Scope:* Ensuring that the Health Sector Workforce is supported to meet the increase in demand associated with the response to COVID-19 is a key priority. This subgroup will focus on HR and strategic workforce issues arising and provide assurance to the NPHET in this regard. In particular, measures to protect staff and ensure continuity of service will be reviewed, taking account of emerging clinical and international evidence and advice.

*Programme of Work:*

1. Ensure arrangements are put in place by employers to protect staff and to ensure staff safety at work.
2. Identify actions and develop guidelines to remove roadblocks to efficient deployment of personnel resources.
3. Agree measures are in place to provide the necessary flexibility to address urgent staffing requirements.
4. Consider where appropriate other arrangements to maximise the pool of workers available to the health sector.
5. Consider workforce related output from other subgroups of the NPHET.

**Membership:** The Health Sector Workforce Subgroup is made up of representatives from the Department of Health (DOH), Health Service Executive (HSE) and Department of Public Expenditure and Reform (DPER).

## **Diagnostic Testing Approaches Subgroup of NPHET**

The Diagnostic Testing Approaches Subgroup of NPHET was established on 29 April 2020. Secretariat is provided by the Department of Health.

There is a dedicated webpage available at: <https://www.gov.ie/en/collection/0a1e9-nphet-diagnostic-testing-approaches-subgroup/>

**Chair:** Dr Alan Smith, Deputy Chief Medical Officer, Department of Health.

**Date Established:** 29<sup>th</sup> April 2020

**Date of First Meeting:** 30<sup>th</sup> April 2020



**Mandate:** Following completion of the HIQA Rapid health technology assessment of alternative diagnostic testing approaches for the detection of severe acute respiratory syndrome coronavirus 2 (SARS-CoV-2) the recommended the establishment of a NPHEt subgroup on diagnostic testing approaches. The mandate of the Subgroup on Diagnostic Testing Approaches is to report to NPHEt with a strategic framework for implementation within the existing HSE COVID-19 Testing Programme.

**Terms of Reference:**

1. To summarise and describe the scientific rationale, type of technology, potential operational utility and location of alternative testing methodologies.
2. To outline a strategic direction for how potential developments in testing will be used when available and independently validated
3. To make recommendations that are consistent with ensuring the resources committed to testing methodologies can be used as flexibly and as efficiently as possible.
4. To monitor developments in test evaluations (by ECDC and WHO) so preparation for and implementation of the strategic framework is timely
5. To provide regular updates to the NPHEt on the work of the Subgroup.

**Out of scope**

The evaluation of individual industry/manufacturers submissions on alternative *in-vitro* devices (IVDs).

The implementation of the strategy – on completion of the strategic framework that its report and recommendations will be submitted from NPHEt to HSE regarding implementation.

**Membership:** The Diagnostic Testing Approaches Subgroup is made up of representatives from the Department of Health, National Virus Reference Laboratory (NVRL), HPSC, HSE, HIQA, HPRA and other persons with relevant expertise in health and/or other matters.

## Wider Cross-Government COVID-19 Governance

### Special Cabinet Committee on the Government Response to COVID-19

**Chair of Cabinet Committee:** Taoiseach

**Date Established:** 3<sup>rd</sup> March 2020

**Date of First Meeting:** 9<sup>th</sup> March 2020

The Government established a Special Cabinet Committee on the Government Response to COVID-19 on 3<sup>rd</sup> March 2020.

The Special Cabinet Committee is supported by a Senior Officials Group across all Departments and a dedicated Crisis Communications Group which coordinates a whole-of-Government communications response.

## **Crisis Communications Group**

**Chair:** Ms Elizabeth Canavan, Assistant Secretary, Department of the Taoiseach

**Date Established:** 17<sup>th</sup> March 2020

**Date of First Meeting:** 18<sup>th</sup> March 2020

A Crisis Communications Team has been established in the Government Information Service to formulate and implement a co-ordinated all-of-Government response to ensure maximum clarity for citizens, business, and the wider community. The team is made up of senior representatives of all Government Departments, the HSE, An Garda Síochána, Tusla, and the Defence Forces.

## **HSE National Crisis Management Team**

The HSE's strategic level leadership for Major Emergency Event or serious incident is the National Crisis Management Team and this group has been established for COVID-19.

## Appendix 1 – NPHE Membership Details

Membership at a point in time reflects the work ongoing. Expert advisors and / or other stakeholders may be invited to attend meetings from time to time.

Dr Tony Holohan ( <b>Chair</b> )	Chief Medical Officer, Department of Health (DOH)
Prof Colm Bergin	Consultant Infectious Diseases, St. James's Hospital and Professor of Medicine, Trinity College Dublin
Mr Paul Bolger	Director, Resources Division, DOH
Dr Eibhlin Connolly	Deputy Chief Medical Officer, DOH
Ms Tracey Conroy	A/Sec, Acute Hospitals Division, DOH
Dr John Cuddihy	Interim Director, Health Protection Surveillance Centre (HPSC)
Dr Cillian de Gascun	Director, National Virus Reference Laboratory (NVRL), UCD, Consultant Virologist
Mr Colm Desmond	A/Sec, Corporate Legislation, Mental Health, Drugs Policy and Food Safety Division, DOH
Dr Lorraine Doherty	National Clinical Director for Health Protection, HPSC, HSE
Dr Mary Favier	President, Irish College of General Practitioners (ICGP)
Dr Ronan Glynn	Deputy Chief Medical Officer, DOH
Mr Fergal Goodman	A/Sec, Primary Care Division, DOH
Dr Colm Henry	Chief Clinical Officer, HSE
Dr Kevin Kelleher	Asst. National Director, Public Health, HSE
Mr David Leach	Deputy National Director of Communications, HSE
Dr Kathleen Mac Lellan	A/Sec, Social Care Division, DOH
Dr Jeanette Mc Callion	Medical Assessor, Health Products Regulatory Authority (HPRA)
Mr Tom McGuinness	Asst. National Director, Office of Emergency Planning, HSE
Dr Siobhán Ní Bhrian	Lead for Integrated Care, HSE
Prof Philip Nolan	President, National University of Ireland, Maynooth
Ms Kate O'Flaherty	Head of Health and Wellbeing, DOH
Dr Darina O'Flanagan	Special Advisor to the NPHE, DOH
Dr Siobhan O'Sullivan	Chief Bioethics Officer, DOH
Dr Michael Power	National Clinical Lead, Critical Care Programme, HSE Consultant in Anaesthetics / Intensive Care Medicine, Beaumont Hospital
Mr Phelim Quinn	Chief Executive Officer, HIQA
Dr Máirín Ryan	Deputy Chief Executive and Director of Health Technology Assessment, HIQA
Dr Alan Smith	Deputy Chief Medical Officer, DOH
Dr Breda Smyth	Director of Public Health Medicine, HSE
Mr David Walsh	National Director, Community Operations, HSE
Ms Deirdre Watters	Head of Communications, DOH
Mr Liam Woods	National Director, Acute Operations, HSE

## Appendix 2 – Expert Advisory Group Membership Details

Membership at a point in time reflects the work ongoing. Expert advisors and / or other stakeholders may be invited to attend meetings from time to time. The table below reflects membership at 16<sup>th</sup> April 2020:

Dr Cillian de Gascun <b>(Chair)</b>	Director National Virus Reference Laboratory (NVRL), UCD, Consultant Virologist
Prof Colm Bergin	Consultant Infectious Diseases, St. James's Hospital and Professor of Medicine, Trinity College Dublin
Prof Karina Butler	Chair, National Immunisation Advisory Committee, Consultant in Paediatric Infectious Diseases
Dr Jeff Connell	Head of Testing, NVRL, University College Dublin
Prof Martin Cormican	HSE National Clinical Lead Healthcare Associated Infections and Antimicrobial Resistance Team, Consultant Microbiologist
Dr Aoife Cotter	Consultant Infectious Diseases, National Isolation Unit
Dr John Cuddihy	Interim Director, Health Protection Surveillance Centre (HPSC)
Dr Lorraine Doherty	National Clinical Director Health Protection, HSE
Dr Aurelie Fabre	Consultant Histopathologist
Prof Sean Gaine	Consultant Respiratory Physician
Ms Josephine Galway	Director of Nursing for Infection Control, HSE
Dr Ronan Glynn	Deputy Chief Medical Officer, DOH
Dr Vida Hamilton	HSE National Clinical Advisor and Group Lead, Acute Hospitals
Dr David Hanlon	HSE National Clinical Advisor and Group Lead for Primary Care
Dr Derval Igoe	Consultant Public Health Medicine, NVRL/HPSC
Dr Ciara Martin	Consultant in Paediatric Medicine
Dr Jeanette McCallion	Medical Assessor, Health Products Regulatory Authority
Ms Helen Murphy	Infection Prevention and Control Nurse Manager, Lead Nurse for Antimicrobial resistance and Healthcare Associated Infections (AMR/HCAIs), HPSC
Mr Damien Nee	Patient Representative
Prof Michael O'Connell	Master of the Coombe Women and Infants University Hospital
Dr Gerard O'Connor	Consultant Emergency Medicine
Dr Joanne O'Gorman	Consultant Microbiologist
Dr Colman O' Loughlin	Consultant Intensive Care Medicine
Dr Margaret O' Sullivan	Chair, National Zoonoses Committee & Consultant Public Health Medicine
Dr Alan Smith	Deputy Chief Medical Officer, DOH
Dr Lynda Sisson	Consultant in Occupational Medicine
Dr Lelia Thornton	Consultant in Public Health Medicine, HPSC

### EAG Research Subgroup Membership:

Prof. Colm Bergin <b>(Co-Chair)</b>	Consultant Infectious Diseases, St. James's Hospital and Professor of Medicine, Trinity College Dublin
Prof Cliona O'Farrelly <b>(Co-Chair)</b>	Professor Comparative Immunology, Biochemistry, Trinity College Dublin
Prof Orla Feely	Vice President for Research, Innovation and Impact University College Dublin
Dr Mark Ferguson	Director General, Science Foundation Ireland (SFI)

Dr Sarah Gibney	Senior Researcher, Research Services and Policy Unit and IGEEES, Department of Health
Prof Stephen Kinsella	Associate Professor of Economics, University College Limerick
Dr Teresa Maguire	Head of Research Services and Policy Unit, DOH
Dr Mairead O'Driscoll	Director of Research Strategy and Funding, Health Research Board (HRB)
Dr Siobhán O'Sullivan	Chief Bioethics Officer, DoH
Prof Ivan Perry	Professor of Public Health, University College Dublin
Dr Ana Terres	Head of Research and Development, HSE

## Appendix 3 – Subgroup Membership Details

### Acute Hospitals

#### Membership:

Ms. Tracey Conroy ( <b>Chair</b> )	Acute Hospitals Policy Division, DOH
Ms. Fiona Bonas	Interim Director, HSE National Cancer Control Programme
Ms. Sarah Cooney	Principal Officer, Social Care Division, DOH
Mr. Gordon Dunne	CEO, Hermitage Clinic
Mr. Martin Dunne	National Director, National Ambulance Service, HSE
Dr. Vida Hamilton	National Clinical Adviser and Group Lead, Acute Hospitals, HSE
Ms. Rachel Kenna	Deputy Chief Nursing Officer, DOH
Mr. David Noonan	Principal Officer, Primary Care Division, DOH
Ms Celeste O’Callaghan	Principal Officer, Acute Hospitals Policy Division, DOH
Dr Michael Power	Consultant in Anaesthetics / Intensive Care Medicine, Beaumont Hospital; National Clinical Lead, Critical Care Programme, HSE
Mr. Liam Sloyan	CEO, National Treatment Purchase Fund
Mr. David Smith	Director, Scheduled and Unscheduled Care Performance Unit, DOH
Mr. Liam Woods	National Director Acute Operations, HSE

### Behavioural Change

#### Membership:

Ms Kate O’Flaherty ( <b>Chair</b> )	Head of Health and Wellbeing, Department of Health (DOH)
Prof Molly Byrne	School of Psychology, National University of Ireland, Galway (NUIG)
Prof Liam Delaney	Professor of Economics, University College Dublin (UCD)
Prof Pete Lunn	Head of Behavioural Research Unit, Economic and Social Research Institute (ESRI)
Dr Aileen McGloin	Director, Marketing and Communications, Safefood
Dr Robert Mooney	Communications Unit, Department of Health (DOH)
Ms Orla Muldoon	Head of Department of Psychology, University of Limerick (UL)
Mr Robert Murphy	Research Services and Policy Unit, Department of Health (DOH)
Mr Karl Purcell	Programme Manager, Behavioural Economics Unit, Sustainable Energy Authority of Ireland (SEAI)

### Guidance and Evidence Synthesis

#### Membership: (to be expanded as necessary)

Dr Máirin Ryan ( <b>Chair</b> )	Director of Health Technology Assessment (HTA), Health Information and Quality Authority (HIQA)
Mr Tim Carey	Assistant National Director, Clinical Design and Innovation (CDI), Office of CCO (Chief Clinical Officer), HSE
Prof. Maire Connolly	School of Medicine, National University of Ireland, Galway
Prof. Martin Cormican	HSE National Clinical Lead Healthcare Associated Infections and Antimicrobial Resistance Team, Consultant Microbiologist,
Dr Patricia Harrington	Head of Health Technology Assessment, HIQA
Ms Anne Horgan	Planning and Performance Lead, Clinical Design and Innovation (CDI), Office of the Chief Clinical Officer (CCO), HSE
Ms Claudine Hughes	Clinical Effectiveness Unit, DOH
Dr Derval Igoe	Specialist in Public Health Medicine, NVRL/HPSC
Ms Tanya King	Deputy Chief Nursing Officer, DOH

Dr Teresa Maguire	Head of Research Services Unit, DOH
Ms Ciara Mellett	Programme Manager, Slaintecare, DOH
Ms Shelley O'Neill	Programme Manager, HIQA
Dr Mary O'Riordan	Specialist in Public Health Medicine, HPSC
Dr Niamh O'Rourke	COVID-19 Public Health Guidance Teamn, HPSC
Dr Alan Smith	Deputy Chief Medical Officer, DOH
Dr Conor Teljeur	Chief Scientist, HIQA
Dr Ana Terres	Assistant National Director, Head of Research and Evidence, HSE

## Irish Epidemiological Modelling Advisory Group (IEMAG)

The following are considered members of the COVID-19 IEMAG:

Prof. Philip Nolan ( <b>Chair</b> )	Maynooth University
Ms Ann Barbar	University College Dublin, UCD
Prof. Alan Barrett	CEO, Economic and Social Research Institute (ESRI)
Prof. Chris Brunsdon	National Centre for Geocomputation, Maynooth University
Prof. Francis Butler	School of Biosystems and Food Engineering, University College Dublin, UCD
Mr Alan Cahill	Statistics and Analytical Services, Department of Health (DoH)
Prof. Maire Connolly	School of Medicine, National University of Ireland, Galway
Mr Malachy Corcoran	Principal Officer, Scheduled and Unscheduled Care Performance Unit, Department of Health (DoH)
Dr Jim Duggan	Information Technology, National University of Ireland, Galway (NUIG)
Prof. James P Gleeson	Dept. of Mathematics and Statistics, University of Limerick
Mr Justin Gleeson	Director, All-Ireland Research Observatory (AIRO)
Mr Conor Keegan	Economic and Social Research Institute (ESRI)
Dr Sean Lyons	Economic and Social Research Institute (ESRI)
Dr Jamie Madden	Biostatistician, at Centre for Veterinary Epidemiology and Risk Analysis (CVERA), UCD, University College Dublin, UCD
Mr David McEvoy	University College Dublin, UCD
Mr Guy McGrath	University College Dublin, UCD
Prof. Simon More	Professor of Veterinary Epidemiology and Risk Analysis, University College Dublin, UCD
Prof. Brendan Murphy	School of Mathematics and Statistics, University College Dublin, (UCD)
Ms Megan O'Driscoll	School of Public Health, Imperial College London, Institut Pasteur, Paris
Dr Darina O'Flanagan	Special Advisor to the NPHE, Department of Health (DoH)
Mr Ajay Oza	HSE Health Protection Surveillance Centre (HPSC)
Dr Mairin Ryan	Director of Health Technology Assessment (HTA), Health Information and Quality Authority (HIQA)
Dr Breda Smyth	Director of Public Health Medicine, HSE
Dr Conor Teljeur	Chief Scientist, Health Information and Quality Authority (HIQA)
Prof. Patrick Wall	School of Public Health, University College Dublin, UCD
Prof. Cathal Walsh	Dept. of Mathematics and Statistics, University of Limerick

## Health Legislation Subgroup

### Membership:

Mr Colm Desmond ( <b>Chair</b> )	Assistant Secretary, Department of Health (DOH)
Mr Kieran Cashman	Professional Regulation Unit, DOH
Mr Micheál Corry	Legal Unit, DOH
Mr Tom Deegan	Department of Education and Skills
Mr Nicholas Donnelly	Department of Justice and Equality
Ms Maria Egan	Medicines, Controlled Drugs and Pharmacy Legislation Unit, DOH
Ms Audrey Hagerty	Food Unit, DOH
Ms Margaret Kelleher	Office of the Parliamentary Counsel
Mr Eamonn Kelly	Department of Housing, Planning and Local Government
Ms Siobhan Kennan	Professional Regulation Unit, DOH
Ms Mary Johnson	Department of Children and Youth Affairs
Mr Liam McCormack	Corporate Legislation Unit, DOH
Ms Siobhan McEvoy	Environmental Health Unit, DOH
Ms Emma-Jane Morgan	Eligibility Policy Unit, DOH
Ms Christine O'Rourke	Office of the Attorney General
Mr Randall Plunkett	Medicines, Controlled Drugs and Pharmacy Legislation Unit, DOH
Mr Anthony Prendergast	Corporate Legislation Unit, DOH
Ms Bernadette Ryan	Corporate Legislation Unit, DOH
Mr Daniel Shine	Communicable Diseases Control Policy Unit, DOH
<i>And other Government Departments, as required</i>	

## Medicines and Medical Devices Criticality Subgroups

### Membership:

<b>Medicines Criticality Assessment Group</b>	
Mr Fergal Goodman ( <b>Chair</b> )	Assistant Secretary, Primary Care Division, DOH
Prof. Colm Bergin	Consultant Infectious Diseases, St. James's Hospital and Professor of Medicine, Trinity College Dublin
Ms AnneMarie Defrein	National Cancer Control Programme (NCCP), HSE
Mr Shane Doyle	Pharmacist, Acute Hospital Drug Management Programme (AHDMP), HSE
Dr Caitriona Fisher	Director of Quality, Scientific Affairs & Communication, Health Products Regulatory Authority (HPRA)
Ms Kathy Hassell	Pharmacist, Primary Care Reimbursement Service (PCRS), HSE
Ms Patricia Heckmann	Chief Pharmacist, National Cancer Control Programme (NCCP), HSE
Ms Mary Hyland	Pharmacist, Medicines, Controlled Drugs & Pharmacy Legislation Unit, DOH
Ms Maeve Hynes	Pharmacist, HSE
Dr. Lucy Jessop	Director, National Immunisation Office (NIO), HSE
Ms Lisa Kelly	Pharmacist, Primary Care Eligibility & Reimbursement Service (PCERS), HSE
Ms Fionnuala King	Chief Pharmacist, Acute Hospital Drug Management Programme (AHDMP), HSE



Ms Kate Mulvenna	Chief Pharmacist, Primary Care Eligibility & Reimbursement Service (PCERS), HSE
Prof. Pat Murray	Consultant Physician, Mater Misericordiae University Hospital (MMUH) and St. Vincent's University Hospital, HSE
Ms Barbara Henry	Health Products Distribution Inspections Manager (Acting), Health Products Regulatory Authority (HPRA)
Ms Mairead O'Connor	Pharmacy Lead in Infectious Diseases, Mater Misericordiae University Hospital (MMUH)
Mr Laurence O'Dwyer	Scientific Affairs Manager, Health Products Regulatory Authority (HPRA)
Ms Emer O'Neill	Health Products Distribution Manager (Acting), Health Products Regulatory Authority (HPRA)
Mr Brefnie O'Rourke	Community Pharmacy, Dental, Optical and Aural Policy Unit, DOH
Ms Muriel Pate	Medication Safety Pharmacist, National Quality Improvement Team, HSE
Ms Marie Philbin	Chief Antimicrobial Pharmacist, Antimicrobial Resistance and Infection Control (AMRIC), HSE
Ms Gráinne Power	Director, Human Products Authorisation and Registration, Health Products Regulatory Authority (HPRA)
Dr Michael Power	National Clinical Lead, Critical Care Programme
Mr Risteard Prendergast	Pharmacist, Primary Care Eligibility & Reimbursement Service (PCERS), HSE
Mr Eamonn Quinn	Medicines, Controlled Drugs & Pharmacy Legislation Unit, DOH
Mr Darren Scully	Medicinal Product Shortages Lead, Health Products Regulatory Authority (HPRA)

<b>Medical Devices Criticality Assessment Group</b>	
Mr Fergal Goodman ( <b>Chair</b> )	Assistant Secretary, Primary Care Division, DOH
Ms Emma Benton	GM Office of the National Clinical Advisor and Group Lead for Acute Hospital Operations Division, HSE
Mr David Bolger	Capital Infrastructure Unit, DOH
Mr Sean Bresnan	Head of Procurement, HSE
Ms Sinead Duggan	Communication and Policy Lead, Health Products Regulatory Authority (HPRA)
Mr Ger Flynn	National Clinical Head of Medical Devices, HSE
Ms Nicola Hickie	Regulatory and Policy Manager, Health Products Regulatory Authority (HPRA)
Ms Mary Hyland	Pharmacist, Medicines, Controlled Drugs & Pharmacy Legislation Unit, DOH
Mr Niall MacAleenan	Head of Medical Devices Department, Health Products Regulatory Authority (HPRA)
Ms Judith Martin	In-vitro Diagnostics (IVD) lead, Assessment & Surveillance, Health Products Regulatory Authority (HPRA)
Ms Karen McNamara	Medicines, Controlled Drugs & Pharmacy Legislation Unit, DOH
Prof. George Mellotte	Clinical Director, National Renal Office, HSE
Prof Ross Morgan	Consultant Respiratory Physician, Beaumont Hospital, HSE
Mr Colm O'Loughlin	Medicines, Controlled Drugs & Pharmacy Legislation Unit, DOH
Mr Brefnie O'Rourke	Community Pharmacy, Dental, Optical and Aural Policy Unit, DOH
Mr Martin Quinlivan	Acting Head of Sourcing & Contracts, HSE

Mr Brendan White	Director of Sourcing, Health Business Services (HBS) Procurement, HSE
------------------	---

## Pandemic Ethics Advisory Group

### Membership:

Dr Siobhán O'Sullivan <b>(Chair)</b>	Chief Bioethics Officer, DoH
Dr Louise Campbell	Medical Ethics, School of Medicine, NUI Galway
Dr Barry Lyons	Consultant, Dept. of Anaesthesia & Critical Care Medicine, CHI Crumlin
Dr Joan McCarthy	Healthcare Ethics, School of Nursing and Midwifery, UCC
Mr Stephen McMahon	Director, Irish Patients Association
Dr Simon Mills SC	Law Library
Dr Andrea Mulligan BL	School of Law, TCD
Prof. David Smith	Healthcare Ethics and Law, RCSI
Mr Mervyn Taylor	Executive Director, Sage Advocacy

## Vulnerable People Subgroup

### Membership:

Dr Kathleen Mac Lellan <b>(Chair)</b>	A/Sec, Social Care Division, Department of Health
Ms Carol Baxter	Assistant Secretary, Department of Justice and Equality
Mr David Buckley	Department of Defence
Ms Louise Carrigan	Accountant Finance Unit, Department of Health
Ms Sheila Caulfield	Healthy Ireland Communications Project Lead, Department of Health
Mr Andy Conlon	Principal Officer, Primary Care, Department of Health
Ms Sarah Cooney	Principal Officer, Older Persons Projects Unit, Department of Health
Mr Malachy Corcoran	Principal Officer, Governance & Performance, Department of Health
Dr John Devlin	Executive Clinical Lead, Irish Prison Service
Ms Brigid Doherty	CEO, Patient Focus (Public Representative)
Ms Mary Dunnion <i>(Alternate: Ms Susan Cliffe)</i>	Director of Regulation and Chief Inspector of Social Services, Health Information and Quality Authority
Ms Mairead Emerson	Civil Service Human Resources, DPER
Dr Margaret Fitzgerald	National Public Health Lead Social inclusion and Vulnerable groups, Public Health Specialist
Joan Johnston <i>(Alternate: Ms Suzanne McCormack)</i>	Chronic Disease air, COPD Support Ireland
Ms Eileen Gleeson <i>(Alternate: Ms Mary Flynn)</i>	Director of the Dublin Region Homeless Executive, Local Government Management Agency
Ms Klare Havelin	Department of Finance and Public Expenditure & Reform
Ms Mary Hurley <i>(Alternate: Mr David Kelly)</i>	Assistant Secretary, Department of Housing, Planning and Local Government
Mr Michael Kirrane	Assistant Secretary, Department of Justice and Equality
Dr Clare Lewis	Deputy Chief Nursing Officer, Department of Health
Mr Dave Maguire	Principal Officer, Mental Health Unit, Department of Health
Dr Caitriona Mc Carthy	Public Health Specialist, National Cancer Control Programme (NCCP), HSE
Dr Joanne Mc Carthy	Disability Federation Ireland, Disability Umbrella Groups Representative

Ms Suzanne Mc Cormack	Irish Thoracic Society, Chronic Disease Representative
Mr Sean Moynihan	CEO, Alone, Voluntary Sector
Ms Bairbre Nic Aongusa	Assistant Secretary, Department of Rural and Community Development
Ms Celeste O'Callaghan	Principal Officer, Acute Hospitals, Department of Health
Mr Albert O'Donoghue	Principal Officer, Department of Children and Youth Affairs
Mr Jim Ryan	Head of Operations Mental Health, Community Operations, Health Service Executive
Ms Máirín Ryan	Deputy Chief Executive and Director of Health Technology Assessment, HIQA
Mr David Buckley	Principal Officer, Department of Defence
Mr Daltan Tattan	Assistant Secretary, Department of Education and Skills
Ms Rosemary Smyth	Director Standard and Quality Assurance, Mental Health Commission

## Health Sector Workforce Subgroup

### Membership:

Mr Paul Bolger ( <b>Chair</b> )	Director, Resources Division, DOH
Mr Stephen Brophy	Principal Officer, Governance and Performance Division, DOH
Ms Patsy Carr	Principal Officer, Social Care Division, DOH
Ms Mairead Emerson	Civil Service Human Resources, DPER
Ms Anne Marie Hoey	National Director of Human Resources, HSE
Ms Dympna Kavanagh	Chief Dental Officer, DOH
Ms Rachel Kenna	Deputy Chief Nursing Officer, Office of the Chief Nursing Officer, DOH
Ms Siobhan Kennan	Principal Officer, Professional Regulation Unit, DOH
Dr Teresa Maguire	Head of Research Services and Policy Unit, DOH
Mr Cian McCarthy	Health Vote, DPER
Ms Jackie Nix	Community Operations Human Resources, HSE
Mr David Noonan	Principal Officer, Primary Care Division, DOH
Mr Gerry O'Brien	Principal Officer, People, Pay & Superannuation Unit, DOH
Mr David O'Connor	Disability Unit, DOH
Mr Kevin O'Farrell	Public Service Pay and Pensions, DPER
Ms Joan Regan	Principal Officer, Acute Hospitals Policy Division, DOH
Ms Eilish Timoney	People, Pay and Superannuation Unit, DOH
Ms Colette Walsh	Head of Human Resources, National Ambulance Service, HSE
Ms Philippa Withero	Assistant National Director of Human Resources, HSE
Ms Amanda Younge	Industrial Relations Unit, DOH

## Diagnostic Testing Approaches Subgroup

### Membership:

Dr Alan Smith ( <b>Chair</b> )	Deputy Chief Medical Officer, DOH
Prof Colm Bergin	Consultant Infectious Diseases, St. James's Hospital and Professor of Medicine, Trinity College Dublin
Prof Martin Cormican	National Clinical Lead Healthcare Associated Infections and Antimicrobial Resistance Team, HSE
Dr John Cuddihy	Interim Director, Health Protection Surveillance Centre (HPSC)
Dr Lorraine Doherty	National Clinical Director for Health Protection, HPSC, HSE

Dr Cillian De Gascun	Director, Consultant Virologist, National Virus Reference Laboratory
Dr Colm Henry	Chief Clinical Officer, HSE
Ms Mary Hyland	Medicines and Medical Devices Criticality Group, DOH
Mr Philip Kelly	Scientific Officer, Medical Advices, HPRA
Dr Mary Keogan	National Clinical Lead, National Clinical Programme for Pathology
Ms Judith Martin	In Vitro Diagnostic Lead, Assessment and Surveillance, Medical Devices, HPRA
Ms Karen McNamara	Medicines and Medical Devices Criticality Group, DOH
Dr Máirín Ryan	Director of Health Technology Assessment (HTA), Health Information and Quality Authority (HIQA)