



An Roinn Talmhaíochta,
Bia agus Mara
Department of Agriculture,
Food and the Marine



Co-funded by
the European Union

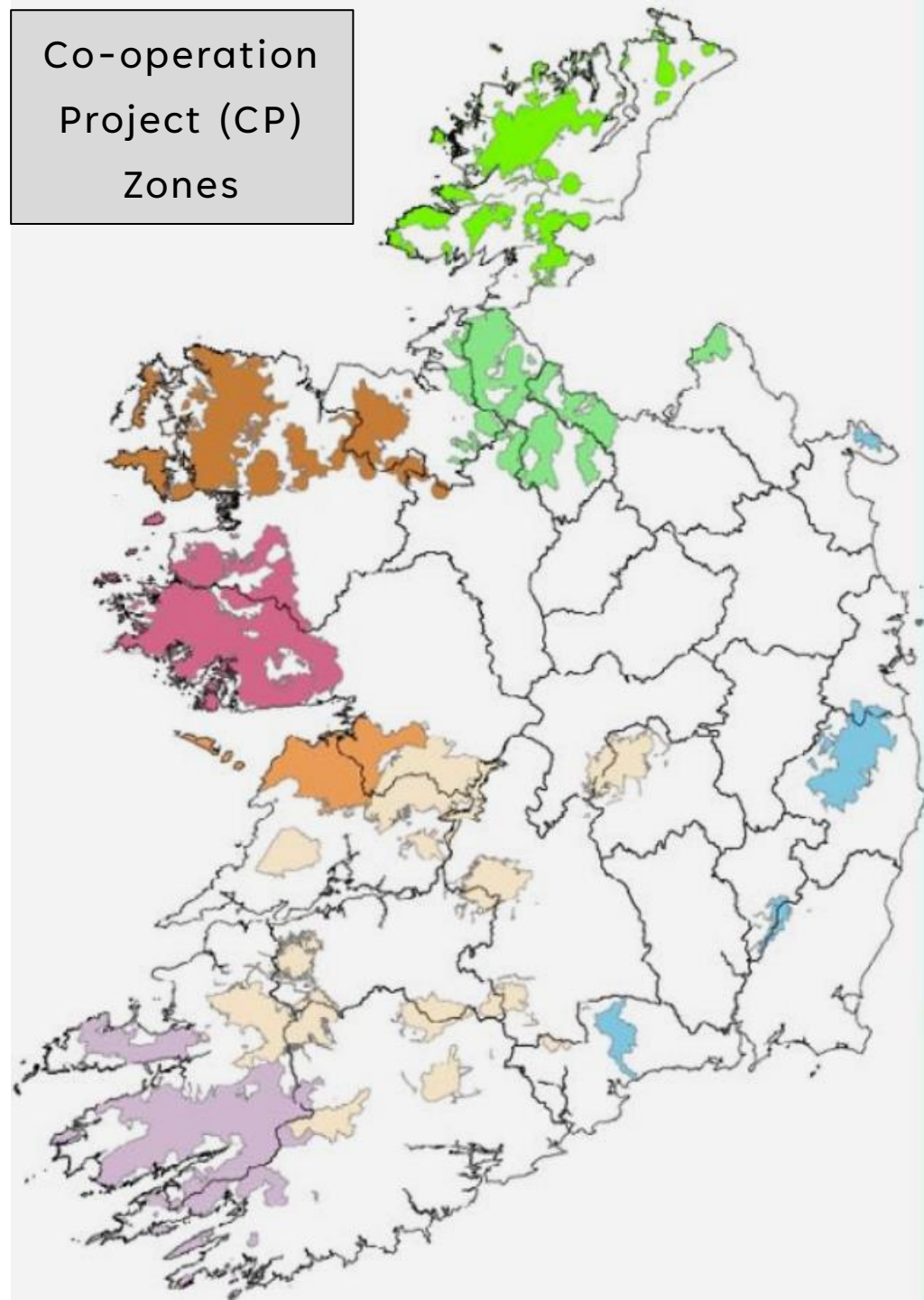
ACRES
D O N E G A L
CO-OPERATION PROGRAMME

ACRES ADVISOR NPI TRAINING

Agenda

- **ACRES Donegal**
 - Local Action Plan and Sub Delivery Regions
 - Update
- **NPI's**
 - Setting the scene for NPI's
 - Sources of information
- **Over to West Connaught CP**

Co-operation
Project (CP)
Zones



ACRES Donegal



ACRES Breifne



ACRES West Connacht



ACRES West Connacht



ACRES Burren Aran



ACRES Munster South Connacht



ACRES Kerry West Cork




ACRES Leinster

8 CP Zones

Comprising mainly extensively farmed upland areas. Based on protected areas (SAC/SPA), non-designated areas of importance and priority water catchments

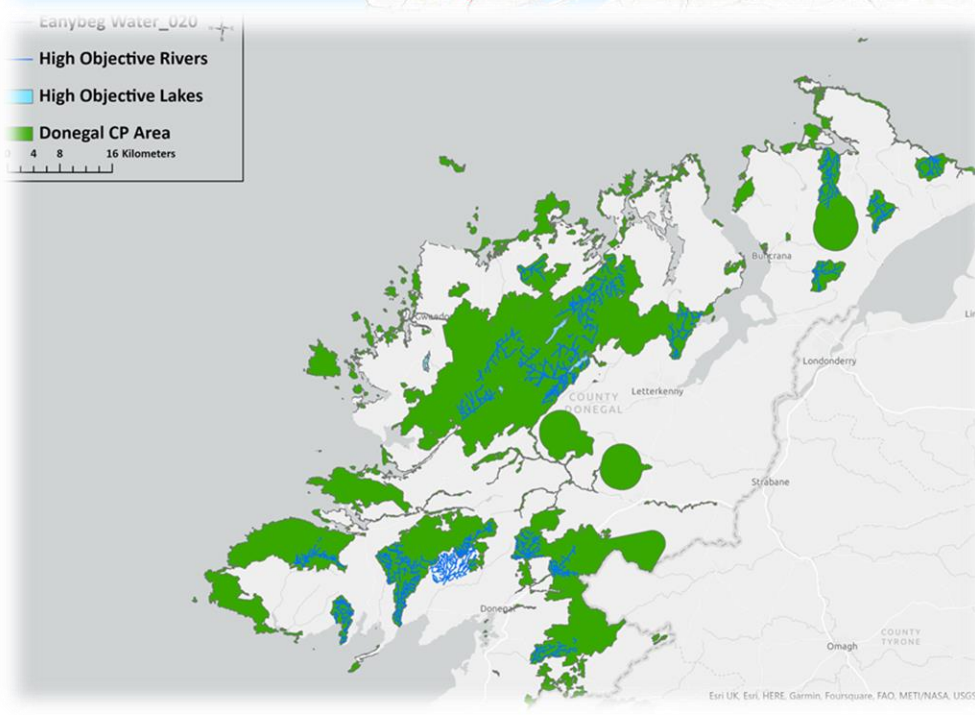
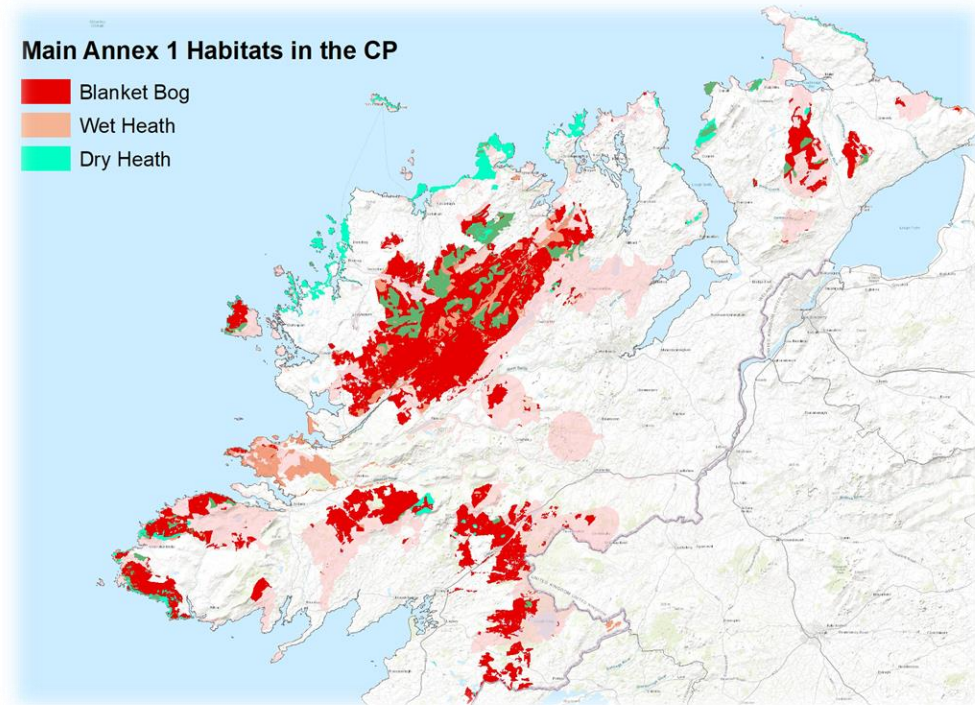
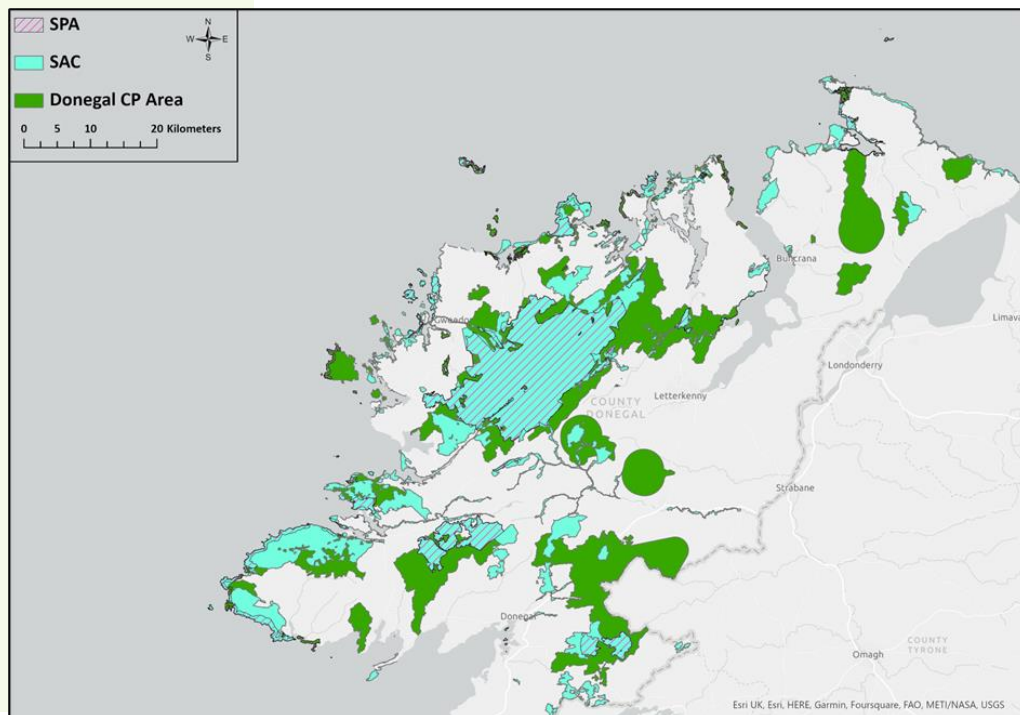
ACRES

CP Team		@	Phone
ACRES Donegal	@ACRESDonegal	info@acresdonegal.ie	087 3381548
ACRES Breifne	@ACRESBreifne	info@acresbreifne.ie	091 9856508
ACRES West Connacht	@ACRESWestConnacht	info@acreswestconn.ie	097 82696
ACRES West Connacht	@ACRESWestConnacht	info@acreswestconn.ie	097 82696
ACRES Burren Aran	@ACRESBurrenAran	info@acresburrenaran.ie oileainerann@acresburrenaran.ie	065 708 9000 083 152 3930
ACRES Munster South Connacht	@ACRESBreifne	info@acresmsc.ie	091 792865
ACRES Kerry West Cork	@ACRESKerryWCork	pdeane@skdp.net	098 203 1034
ACRES Leinster	@ACRESBreifne	info@acresleinster.ie	091 792865

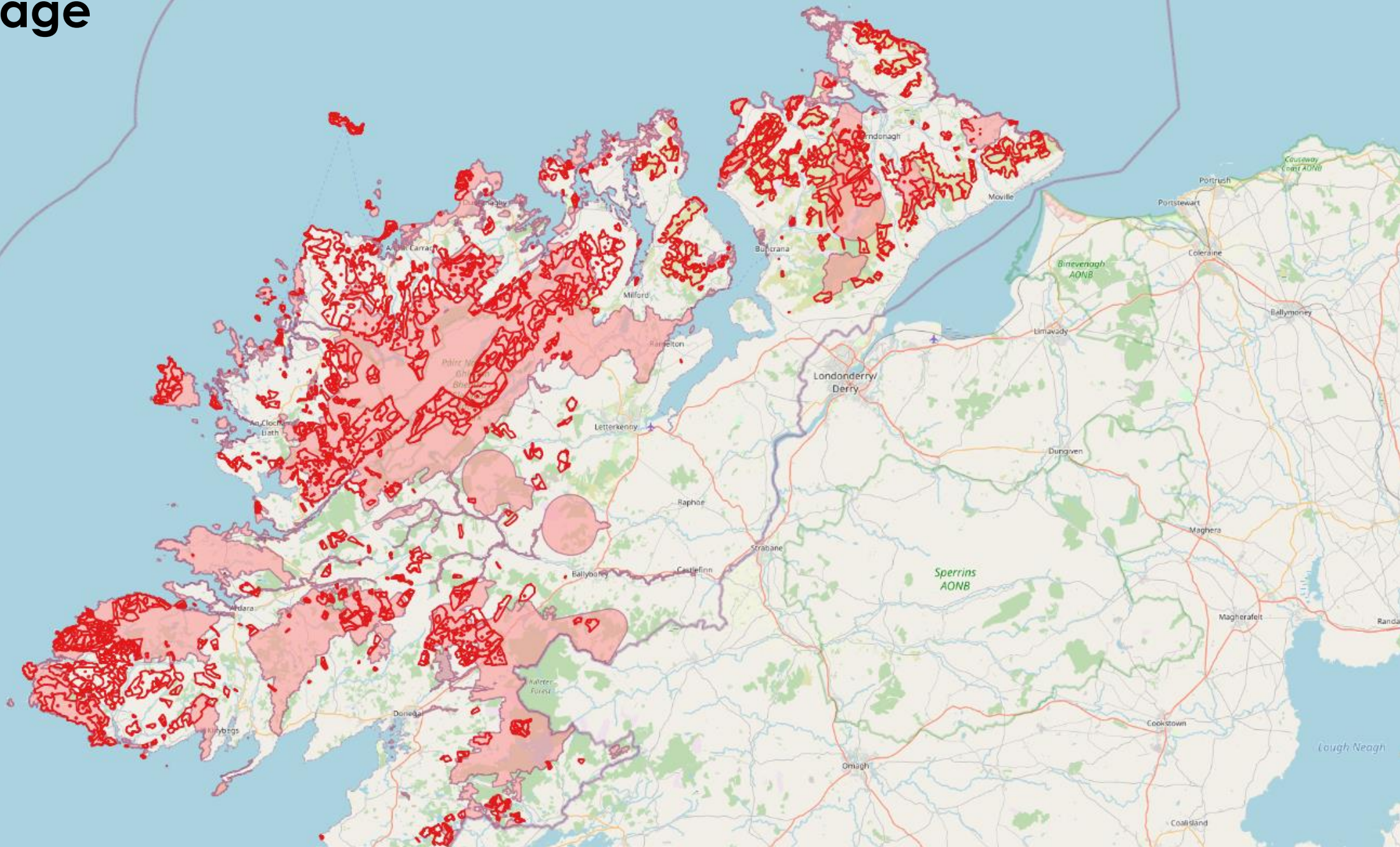
LOCAL ACTION PLAN

ENVIRONMENTAL PRIORITY TARGETS

- Local Action Plan developed by each CP team
- Identifies local objectives based on available data from NPWS, EPA, and other datasets.
- Aim to provide multiple benefits
- **Water quality** will be a priority in most areas
- **Climate adaptation** and mitigation is a major focus for this round of CAP e.g. carbon sequestration and storage; drought, flood and wildfire resilience.
- **Key species and habitats** e.g. Marsh Fritillary, Curlew, Freshwater Pearl Mussel etc.



Commonage

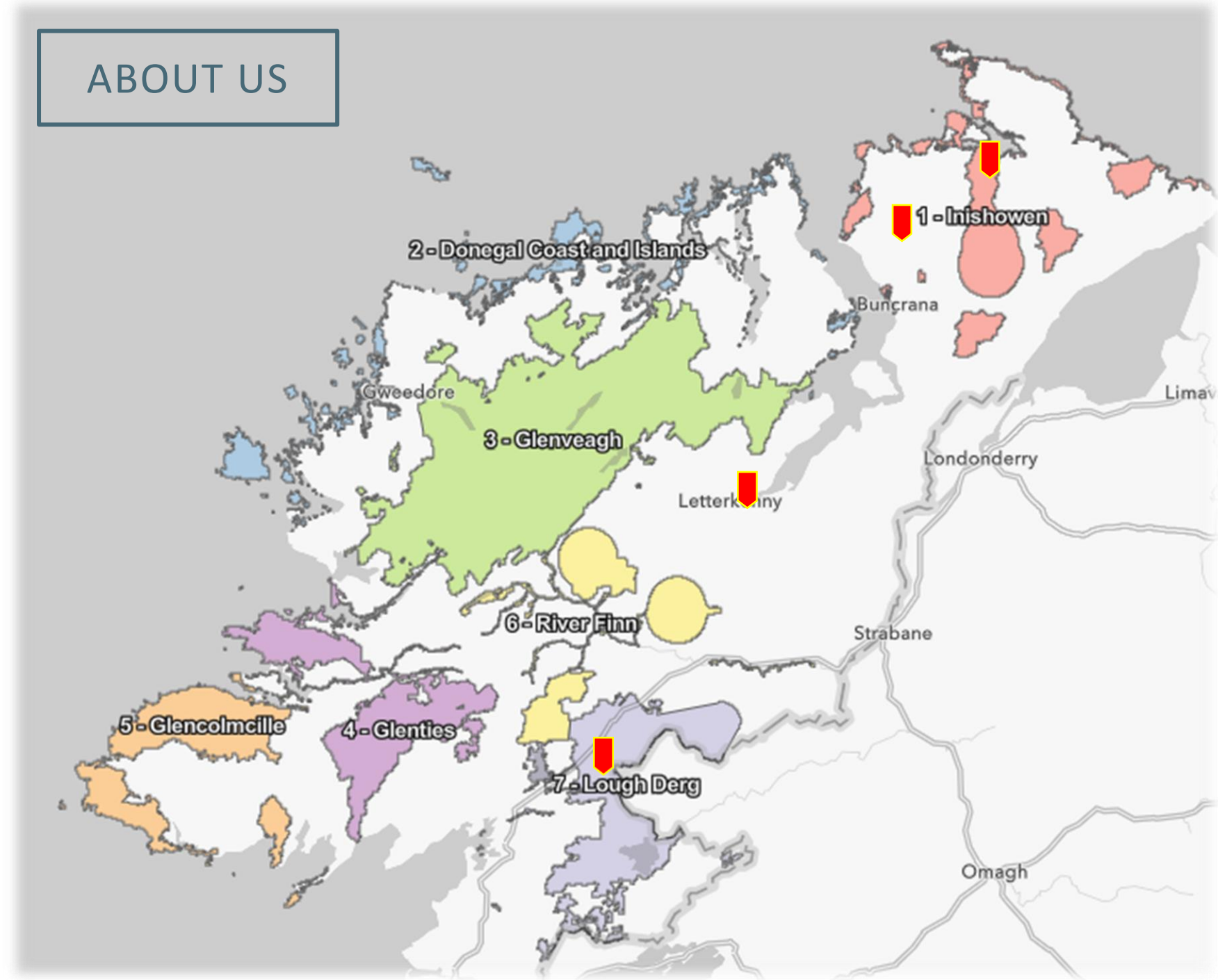


ABOUT US

Team Office's in Donegal
Town, Letterkenny, Drumfries
and Carndonagh (in red).

CP zone divided into 7 sub-
regions:

- *Inishowen;*
- *Glenveagh;*
- *Lough Derg;*
- *Glenties;*
- *Glencolmcille;*
- *River Finn; and*
- *Donegal Coast and Islands.*




Designated sites

EU Designated Sites

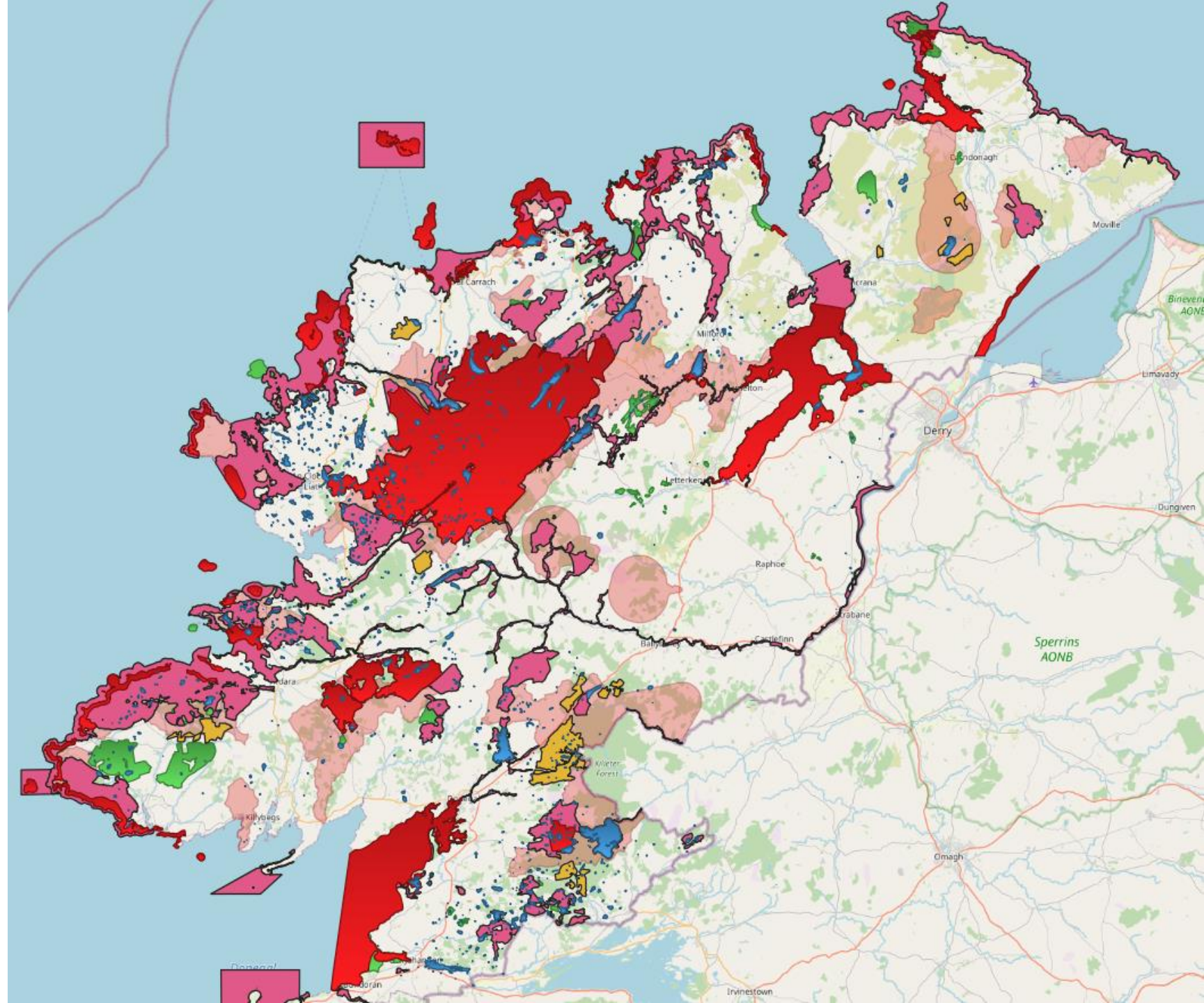
47 (SACs)

26 (SPAs)

Nationally Designated Sites:

 12 NHAs

77 pNHAs



Targeting and Monitoring

- Establish specific, measurable, actionable, realistic and time-bound (SMART) targets and Key Performance Indicators that will measure positive impacts on biodiversity.
- Targets focused on measurable results-based outcomes and actions with a strong evidence base for effectiveness.
- Collection of baseline data in 2023 e.g. breeding wader site surveys; marsh fritillary data/surveys of known populations within CP zone.
- Water quality data; monitoring from LAWPRO, ASSAP and EPA.
- National monitoring schemes >>>.

Species/species groups	Type of programme	Further detail
Wintering waterbirds	Annual national programme	Irish Wetland Bird Survey; an ongoing long-term dataset
Breeding waders	Rolling national programme	Surveys of key sites across a number of habitats (including machair and uplands)
Marsh fritillary	Rolling national programme	Annual monitoring of sample of sites using web counts; use of incidental records from butterfly atlas surveys
Wet heath, blanket bog, transition mires (blanket bogs and uplands), Rhynchosporion depressions (on blanket bog)	Rolling national programme	Ongoing National Survey of Upland Habitats (NSUH) programme. Monitoring at previously surveyed sites; baseline survey at new sites. Ties in with WAN IP in the relevant geographical area. Other elements to be considered include ecotope mapping, hydrological surveys

Donegal Acres Summer update


- Completing Scoring of Commonage Plots
- Some pressures / threats that found whilst scoring
 - Invasives
 - Dumping
 - Water pressures
 - Overgrazing / Undergrazing
- NPI Farmer Information events



Non-Productive Investments

- A Total of €17,500 is available for NPIs & LA's over the 5 years.
- Important to note that **€52,500 is available for CP participants.** In the event that land is scored low then and core payment < **€7,000** per annum additional money will be available for NPI/LA i.e. **>€ 17,500.**
- CP Team will work with Advisors and farmers to identify appropriate actions.
- CP team will screen proposed actions.


ACRES CP Draft NPI specification




ACRES
Agri-Climate Rural Environment Scheme

ACRES Co-operation Draft Non Productive Investments Specification

Draft October 2023



An Roinn Talmhaíochta,
Bia agus Mara
Department of Agriculture,
Food and the Marine



The European Agricultural Fund
for Rural Development

ACRES NPI Action	Units	Minimum to be delivered	Maximum units payable per NPI-Annual Works Plan	Payment Rate	Maximum Payment per NPI-Annual Works Plan	Maximum Units Payable per 5-year ACRES Contract
NPI Habitat/Wildlife Support						
NPI Barn Owl/Kestrel Nest Box	Box	1	6	€294.40	€1,766.40	6
NPI Bat Boxes	Box	3	15	€56.43	€846.45	15
NPI Bracken Strimming	Hectare	0.01	2	€835.44	€1,670.88	
NPI Bracken Mechanical	Hectare	0.01	6	€242.76	€1,456.56	
NPI Conservation of Cultural Heritage Sites on Arable Land	Unit	1	10	€299.91	€2,999.10	10
NPI Conservation of Cultural Heritage Sites on Grassland	Unit	1	10	€133.71	€1,337.10	10
NPI Field Margin 3m	Metre	10	500	€5.45	€2,725.00	500
NPI Hedge Rejuvenation	Metre	10	200	€18.88	€3,776.00	
NPI Planting New Hedgerows	Metre	10	300	€23.10	€6,930.00	
NPI Planting Traditional Orchard 10 trees	Orchard	1	2	€1,302.61	€2,605.22	2
NPI Planting Trees	Tree	3	120	€31.17	€3,740.40	
NPI Repair of Traditional Stone Wall 2 sides	Metre	10	1000	€3.03	€3,030.00	
NPI Repair of Traditional Stone Wall 1 side	Metre	10	500	€1.59	€795.00	
NPI Riparian Margin Tree planting	Tree	10	120	€13.93	€1,671.60	
NPI Riparian Margin	Metre	10	1000	€5.50	€5,500.00	
NPI Riparian Margin (Sheep fencing)	Metre	10	1000	€9.48	€9,480.00	
NPI Rodenticide Free Rodent Control	Unit	1	6	€272.06	€1,632.36	6
NPI Small Woodland 160 trees 0.05Ha	Woodland (160 trees)	1	2	€1,247.48	€2,494.96	2
NPI Small Woodland 300 trees 0.09Ha	Woodland (300 trees)	1	2	€2,309.20	€4,618.40	2
NPI Swallow Boxes	Box	3	12	€29.32	€351.84	12
NPI Swift Boxes	Box	3	9	€134.04	€1,206.36	9
NPI Wader Scrapes	Scrape	1	5	€265.28	€1,326.40	5
NPI Wild Bird Cover Plot	Hectare	0.25	3	€1,286.00	€3,858.00	
NPI Wild Bird Cover Strips	Metre	50	400	€5.41	€2,164.00	
NPI Winter Stubble	Hectare	0.04	50	€119.42	€5,971.00	

Non-Productive Investments

Actions which...

1. Should help increase the field score
2. Enhance biodiversity on the farm
3. Generate additional farm income

Non-Productive Investments

Habitat Creation

- Hedgerows
- Traditional orchard
- Planting trees
- Riparian margins
- Wild bird plots and strips

Wildlife Supports

- Barn Owl/Kestrel Nest Box/Bat Box
- Swallow / Swift box
- Rodenticide free rodent control
- Wader scrapes
- Bracken Management

Infrastructure

- Repair of stone walls
- Culverts
- Fencing
- Gates
- Mobile cattle feed troughs
- Mobile feed storage bins
- Pasture and solar pumps
- Water troughs/storage tanks
- Rainwater catchers

Water Quality

- Riparian Margins
- Culverts
- Pumps
- Water Tanks / Troughs
- Solar Fencing Unit

ADDITIONAL PAYMENTS FOR ECOSYSTEM SERVICES

WOODLAND

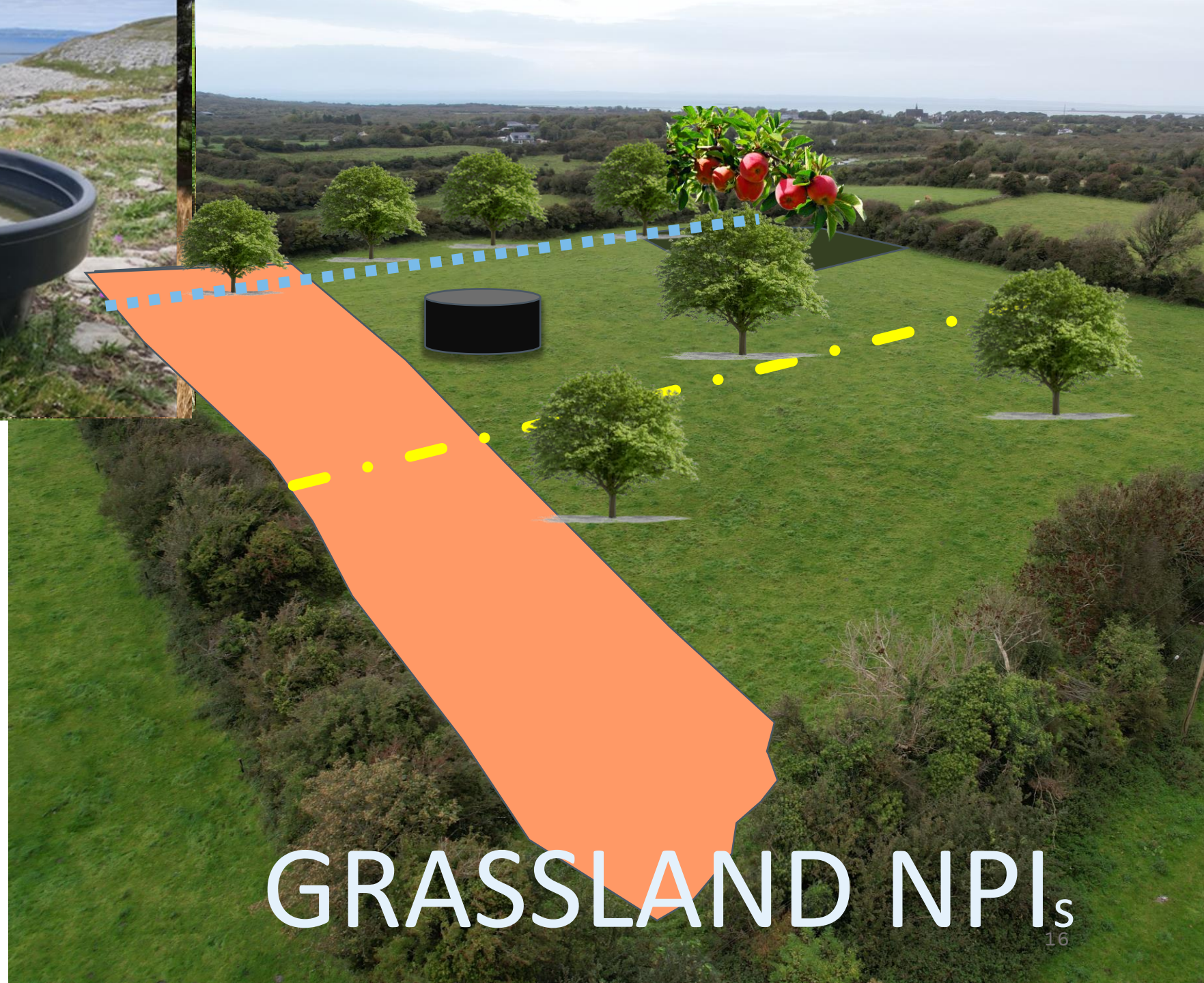
SPECIES-RICH
GRASSLANDS

HEDGEROWS

WHILE STILL
PRODUCING
AGRICULTURAL
PRODUCTS

GOOD WATER
QUALITY





HEDGE PLANTING
HEDGE INFILLING
WILD BIRD COVER
TRADITIONAL ORCHARDS
PLANTING TREES
RIPARIAN MARGINS
WATER TROUGHS

GRASSLAND NPI_s

ROUGH GRAZING NPIs

HEDGEROW PLANTING

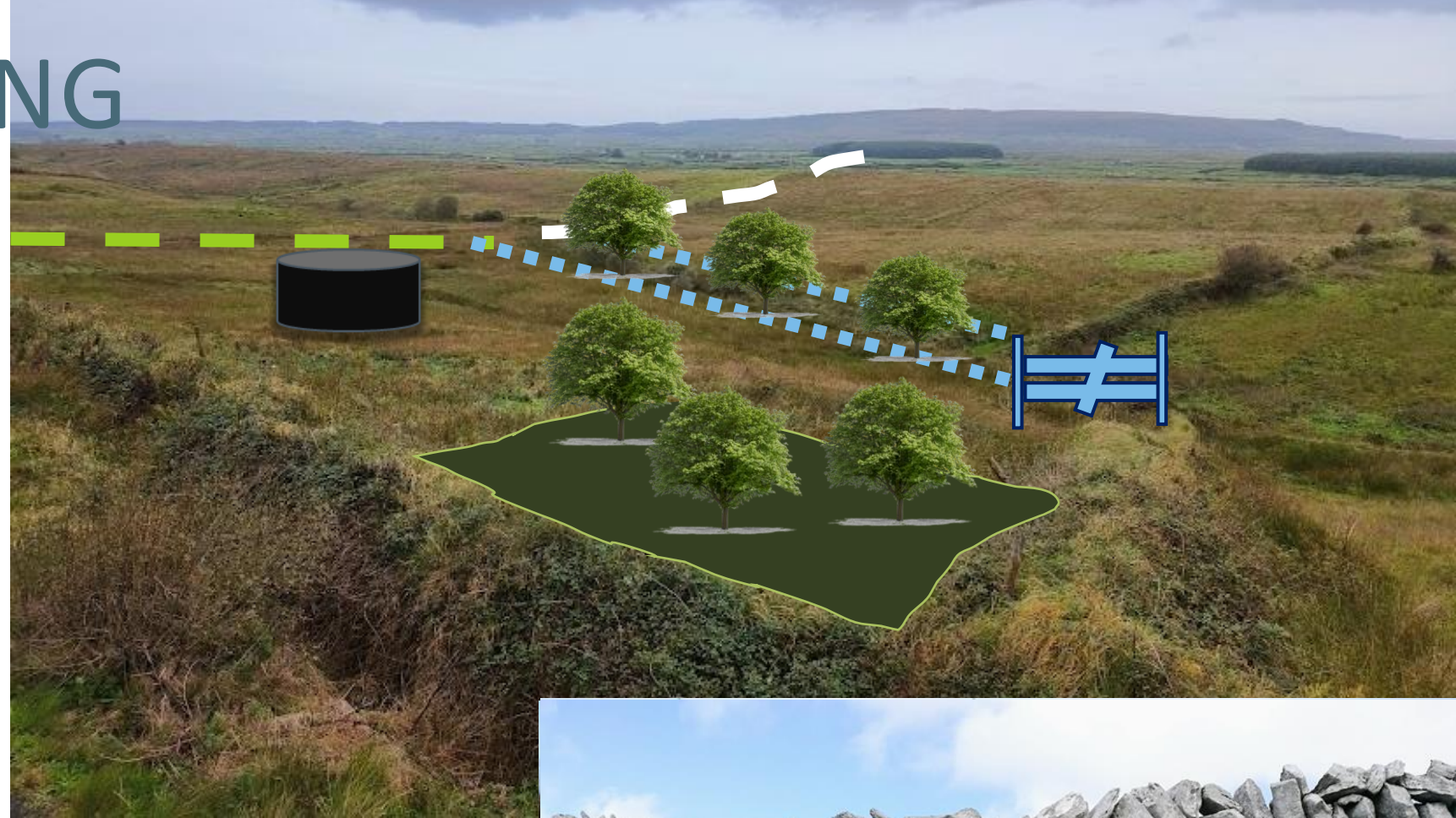
STONE WALL REPAIR

PLANTING TREES

RIPARIAN MARGIN

GATE INSTALLATION

WATER TROUGH INSTALLATION



FARMYARD NPIS



BARN OWL BOXES

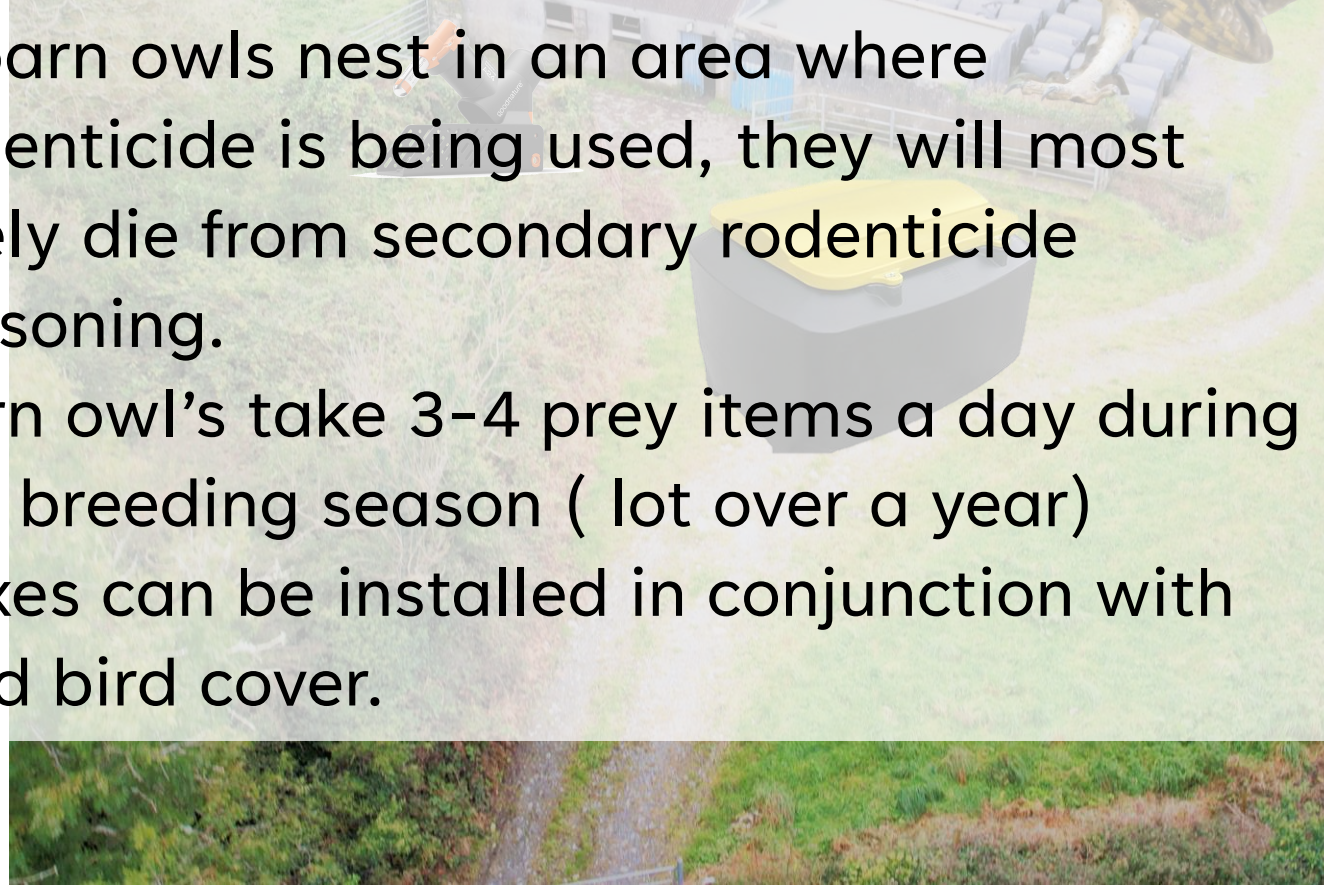
RODENTICIDE-FREE RODENT
CONTROL

FEED STORAGE BINS

SWIFT BOXES

BAT BOXES

- If barn owls nest in an area where rodenticide is being used, they will most likely die from secondary rodenticide poisoning.
- Barn owl's take 3-4 prey items a day during the breeding season (lot over a year)
- Boxes can be installed in conjunction with wild bird cover.



NPI – Wader Scrape

- To create opportunities for waders to feed and to support aquatic insects through the creation of small, shallow, and often seasonal pools.
- Only available on fields that have a scorecard submitted and targeted at fields used by breeding waders.
- Creation of a shallow scrape with a minimum surface area of 48m² and no larger than 225m²



B Wet features & hydrology

Poor: No accessible wet features for foraging birds.	-10	
Limited: Wet features rare. Or if present, too dry and/or over vegetated and/or too steep.	0	
Good: Wet features present, but plot could be improved by increasing the amount /quality.	10	
Excellent: Features of appropriate slope, wetness and vegetation cover	15	

General Considerations

- Signals will be from scorecards to get NPIs done – not points you scored but ones you lost. Use lost scores for signposts.
- Picking actions, actions to things on scorecard - bad mark for field boundaries then suggest plant hedgerow.
- There are options within specification that may be favoured by your customers but factor in what is going to deliver best environmental outcome and in turn scorecard improvements
- Plan out application with your expert knowledge and understanding using all relevant data to you in terms of GLAM in conjunction with specification.

Essential Information when considering NPI application

- Submitted Scorecards
- GLAM
- List of Non-Productive Investments for ACRES Co-operation
- Specification for Non-Productive Investments for ACRES Co-operation

<https://www.gov.ie/en/service/f5a48-agri-climate-rural-environment-scheme-acres/#non-productive-investments>

ACRES

DONEGAL

CO-OPERATION PROGRAMME



/acresdonegal

www.acresdonegal.ie



An Roinn Talmhaíochta,
Bia agus Mara
Department of Agriculture,
Food and the Marine



Inishowen
Development
Partnership

INISHOWEN
FARM INNOVATIONS

Go raibh maith agaibh!



Thank You!

Drumfries, Clonmany
Co. Donegal, F93 N793

Tel: 087 3381548

email: info@acresdonegal.ie