



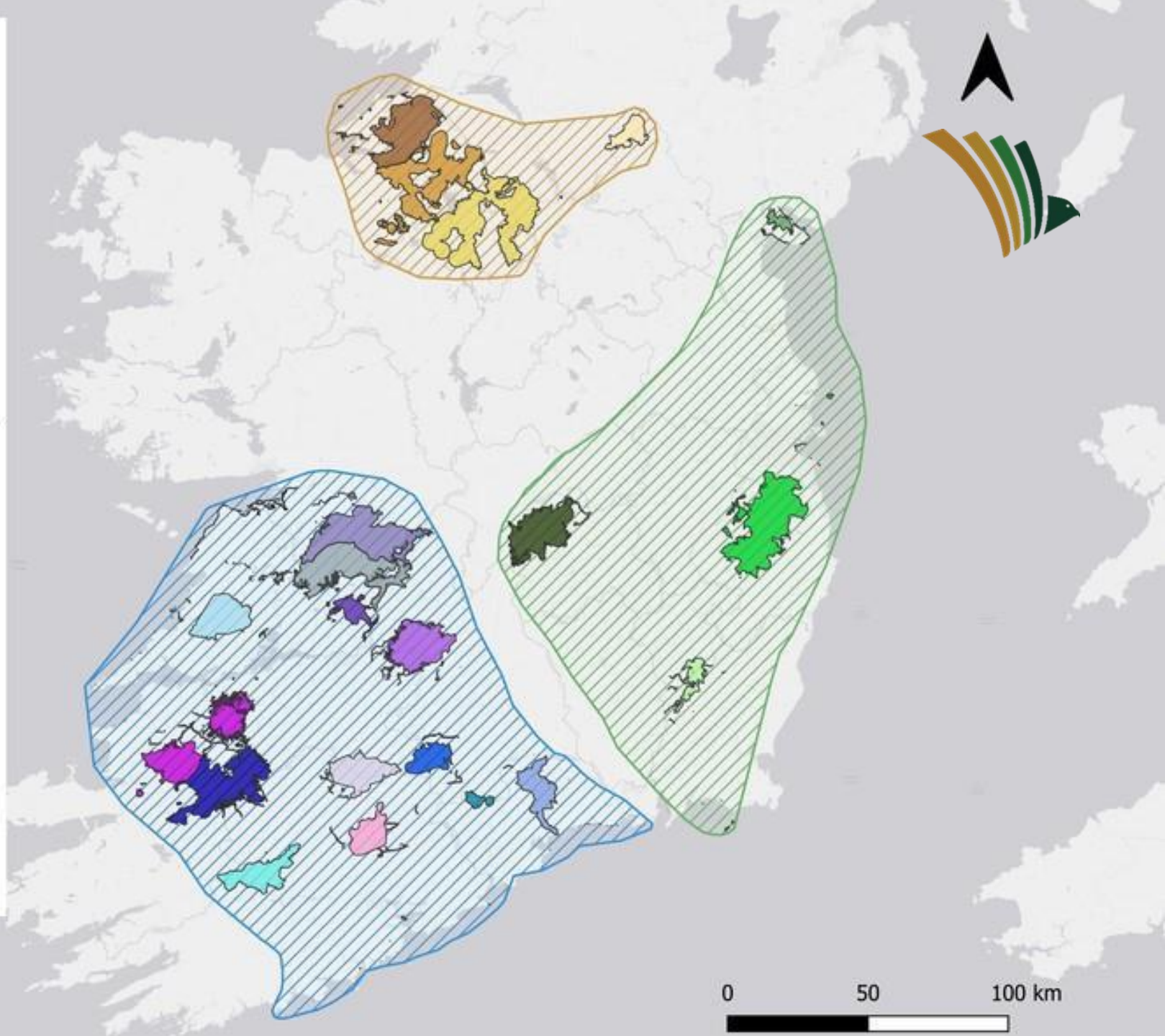
ACRES Breifne
ACRES Leinster
ACRES Munster South Connacht

CP PROJECT TEAM



- Our goal is to help farmers to deliver for climate, for habitats, for water and for our shared heritage
- Authority is delegated to the maximum extent possible
- Local Teams support the participating farmer and the advisor
- Administration and Technical Staff are there to support the Local Teams

REGIONAL STRUCTURES

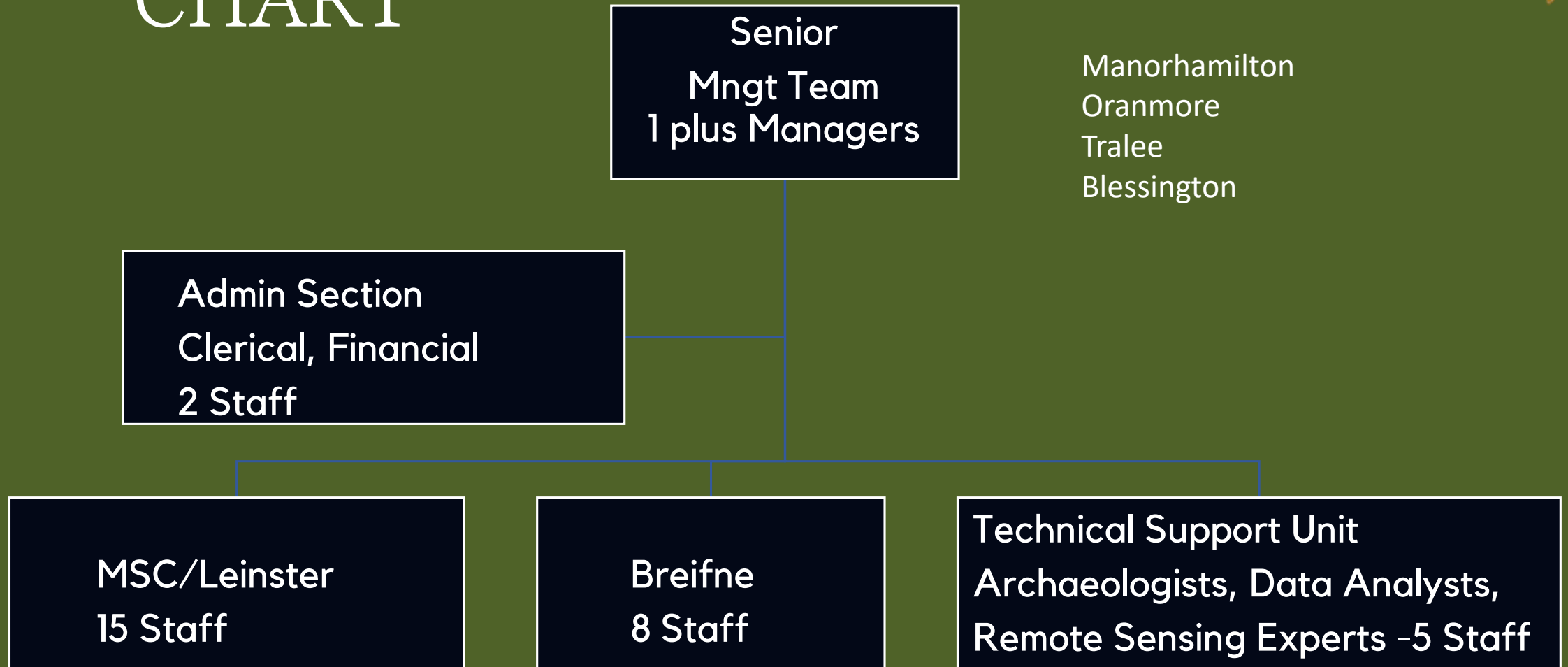


ORGANISATION CHART



Offices in

Manorhamilton
Oranmore
Tralee
Blessington



Current Workforce is 31

STEERING GROUP

- Farmer Representatives
- Private Advisors
- Teagasc
- Local NPWS
- DAFM



LOCAL ACTION FUND

- Micro grants of up to €5,000 available to farmers, community groups and schools for projects that could not be supported directly by the ACRES Scheme
- Project must normally be linked to local objectives
- Micro Projects are financed by the Hen Harrier Project

LOCAL AREA PARTNERSHIP

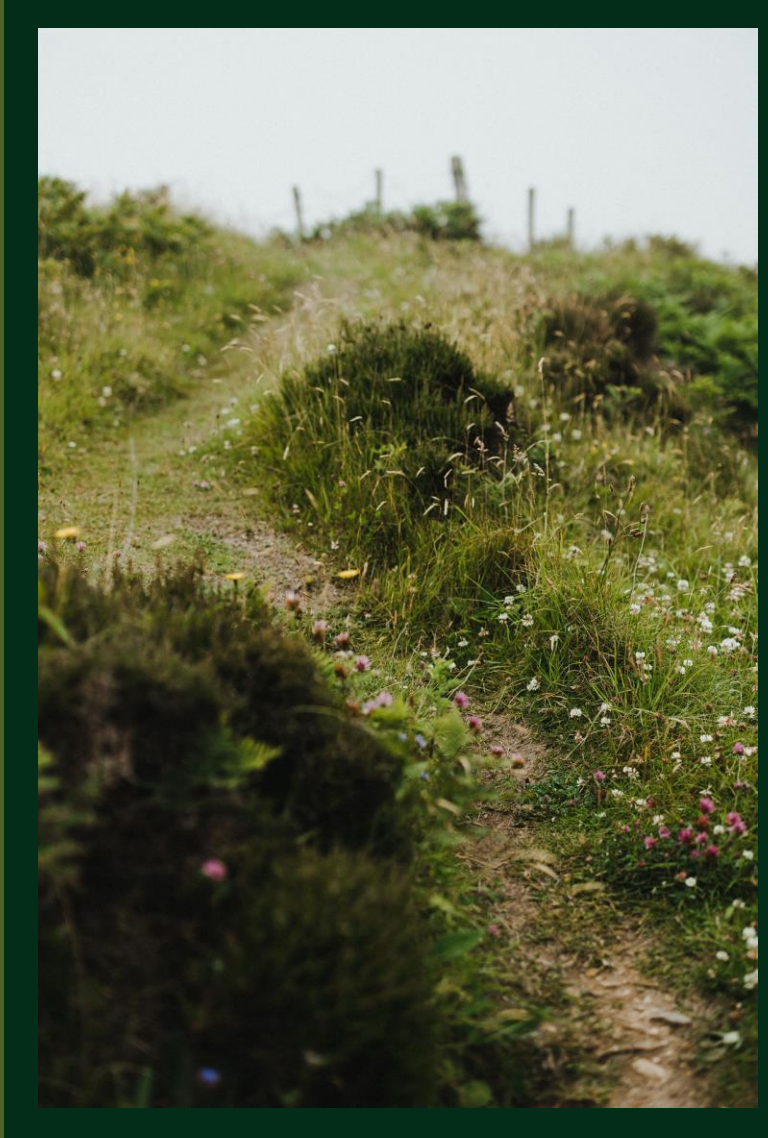
- Roughly 1 for every 300-500 farmers
- 2-3 farmers,
- 1 or 2 advisors active in the area
- Local Project Officer
- Determine Local Priorities for training, open days,
- Deliver some training with support from the team
- Advisors and Farmers will be paid for their time
- 1-2 year term

LOCAL AREA PLAN OBJECTIVES

Each Area has local objectives

These go down to Land Parcel level

- Water is an objective everywhere
- The habitat on the Scorecard is always an objective
- Certain Species
 - Barn Owl, Kestrel, Chough, Freshwater Pearl Mussel, Lesser Horseshoe Bat, Hen Harrier, Waders are objectives in areas where they are present
- Local Objectives will be accessible on our website and through GLAMS



SELECT NPIS APPROPRIATE FOR LOCAL OBJECTIVES

- Water – Riparian zones, Water Troughs, Pasture Pumps, Solar Pumps, Fencing of watercourses
- Barn Owl/ Kestrel – Nest Boxes, Planting New Hedgerows, Hedgerow rejuvenation, Wild Bird Cover, Rodenticide Free Rodent Control
- Hen Harrier – Wild Bird Cover, Planting new Hedgerows, Rodenticide Free Rodent Control
- Lesser Horseshoe Bat – Planting new Hedgerows
- Waders – Wader Scrapes (not within 200 m of Woodlands or Forestry), on peatlands action is only permitted on Cutover bog
- If in doubt, contact the CP team before applying
- Remember all actions on Commonage are Landscape Actions, the CP team will apply for these on behalf of the farmer



SCORECARDS AS A GUIDE

- The completed Scorecard is a signpost to a better Score and a better payment.
 - Low Score for Field Boundaries then avail of Planting New Hedgerows or Stonewall maintenance.
 - Low Score for Hydrological Integrity then avail of Riparian Margins, Culverts, Fencing, Planting New Hedgerows, Water troughs, Pasture Pumps, Water trough
- Landscape Actions will in time provide support for actions connected to hydro morphology and Invasive Species





RIGHT ACTION IN THE RIGHT PLACE

Prevent Damage from inappropriate location of Actions

- Validations in GLAMS prevent some inappropriate actions, e.g., Wild Bird Cover in a Scrub Woodland field

• Screening of all proposed NPI will provide extra protection

• Screening for Appropriate Assessment is a legal requirement

- ACRES CP Screening goes further than Appropriate Assessment considering if NPI are a risk to Monuments, to Wildlife or third parties
- CP teams will carry out the Screening
- No Action is approved until it is approved on GLAMS and a Works Plan is issued.
- Stress to the farmer not to carry out any works until they get approval.



IMPORTANCE OF PLACE

SCREENING

- Actions must be delivered where authorised, very limited tolerance for deviation
- If an Action Screens in at a given location, it cannot be assumed that it would pass in the next field or even 100 m away in the same field
- If an Action was applied for in the wrong place or the farmer changes his mind or encounters practical difficulties, withdraw the action, apply again in the next application window
- Do not deliver the action in a new location, it will be unauthorised and will not be paid on.

EXCLUDED HABITATS

No NPIs will be approved in

- Intertidal Areas
- Marram Grass Dunes
- Sea Cliffs
- Salt Marsh
- Caves 20m buffer around mouth of the cave
- Mountain Cliffs
- Scree Slopes
- Bog Woodlands
- Other Wet Woodland
- Yew Woodland
- Juniper Scrub
- Lakes and Ponds
- Natural Water Courses
- Reedbeds
- Restricted Habitats
 - Turloughs & Mineral Flushes - Stonewall Maintenance only



HIGH RISK OF REJECTION

- NPIs near Monuments, particularly those where delivery involves ground disturbance, e.g., Culverts or Wader Scrapes
- Locations near watercourses or drains particularly actions that involve removal of vegetation, e.g., Wild Bird Cover
- Tree Planting Actions, Planting New Hedgerows, Orchards in Wader fields or Geese and Swan areas hotspots
- Wild Bird Cover near public roads or buildings
- Barn Owl Boxes near Motorways or Railways (500m)
 - Kestrel boxes may still be approved here
- Tree Planting Actions, Planting New Hedgerows, Orchard or Wild Bird Cover over 500m altitude
- Wader Scrapes near Forestry (200m)
- Applications that do not contribute to realizing the objectives in the Local Area Plan
 - Only fencing or gates applied for

If in doubt, contact the Project team before applying



INFRASTRUCTURE NPI

INCREASE ABILITY TO DELIVER IMPROVEMENT THROUGH MANAGEMENT

- Managing the movement of livestock facilitates Rotational Grazing
- Giving Pastures a rest allows plants to recover after grazing
- Prevents favoured plants from being grazed out
- Protects water by keeping livestock out of water courses and drains

FENCING AND GATES

- Increases farmer's ability to manage the movement of livestock around the farm

WATER TROUGHS AND PASTURE PUMPS

- Protects Watercourses by providing safer drinking points for livestock
- Do not locate them beside drains or water courses, they will fail screening
- Do not locate them beside gates or in field corners
- Concrete troughs or big plastic troughs in middle of fields or midway along the length of the longest boundary, facilitates dividing fields into paddocks for rotational grazing
- Use hardcore to firm up area around troughs



HABITAT ENHANCEMENT & WILDLIFE SUPPORT

PLANTING NEW HEDGEROW

- Improves scores on Grassland and Rough Grazing Scorecards
- Wildlife Corridors, increases connectivity for wildlife, e.g., Lesser Horseshoe Bats
- Provides nesting opportunities for small birds
- Provides food source for birds and mammals
- Linear features are used by Hen Harriers for hunting
- Can impede nutrient pathways from sources to receiving channels

WILD BIRD COVER

- Supports Pollinators
- Insects are important food supply for birds feeding their chicks
- Supports small birds and mammals in the Winter
- Creates Hunting opportunities for Barn Owls, Hen Harriers, and Kestrels



HABITAT ENHANCEMENT & WILDLIFE SUPPORT

BRACKEN MANAGEMENT

Priority is to stop expansion of bracken into high value grassland or dry heath

- Avoid steep slopes, riparian areas
- Focus on the periphery blocks rather than trying to break up the block
- One exception is around access points to reduce risk from ticks
- Blocks over 1 ha will fail default screening, use multiple small blocks rather than one big block
- Repeated cutting is required, starting as the fronds unfurl and repeated several times throughout the season
- No chemical control is allowed
- Significant risk of disturbance to ground nesting birds if carried out incorrectly, action will not be approved near Hen Harrier nesting/ roosting areas or near Curlew nesting areas



WILD BIRD COVER



Very valuable for small birds and small rodents
Creates hunting opportunities for Barn Owl, Hen Harrier and Kestrel
Don't put near a water course or drain, tilled land is a source of sediment
Don't put near a road, no point in drawing in small birds to be roadkill
Don't put near buildings, Rodents can cause a nuisance

Summary

- NPIs are a core part of ACRES Co-Operation
- Along with the Habitat payment and the Landscape Actions they give every farmer the opportunity to draw down up to €52,500
- NPIs support the farmer to address issues on their farm, issues that are holding back their habitat payments
- NPIs allow the farmer to make a meaningful contribution to realizing local objectives

