

West Connacht Cooperation Project

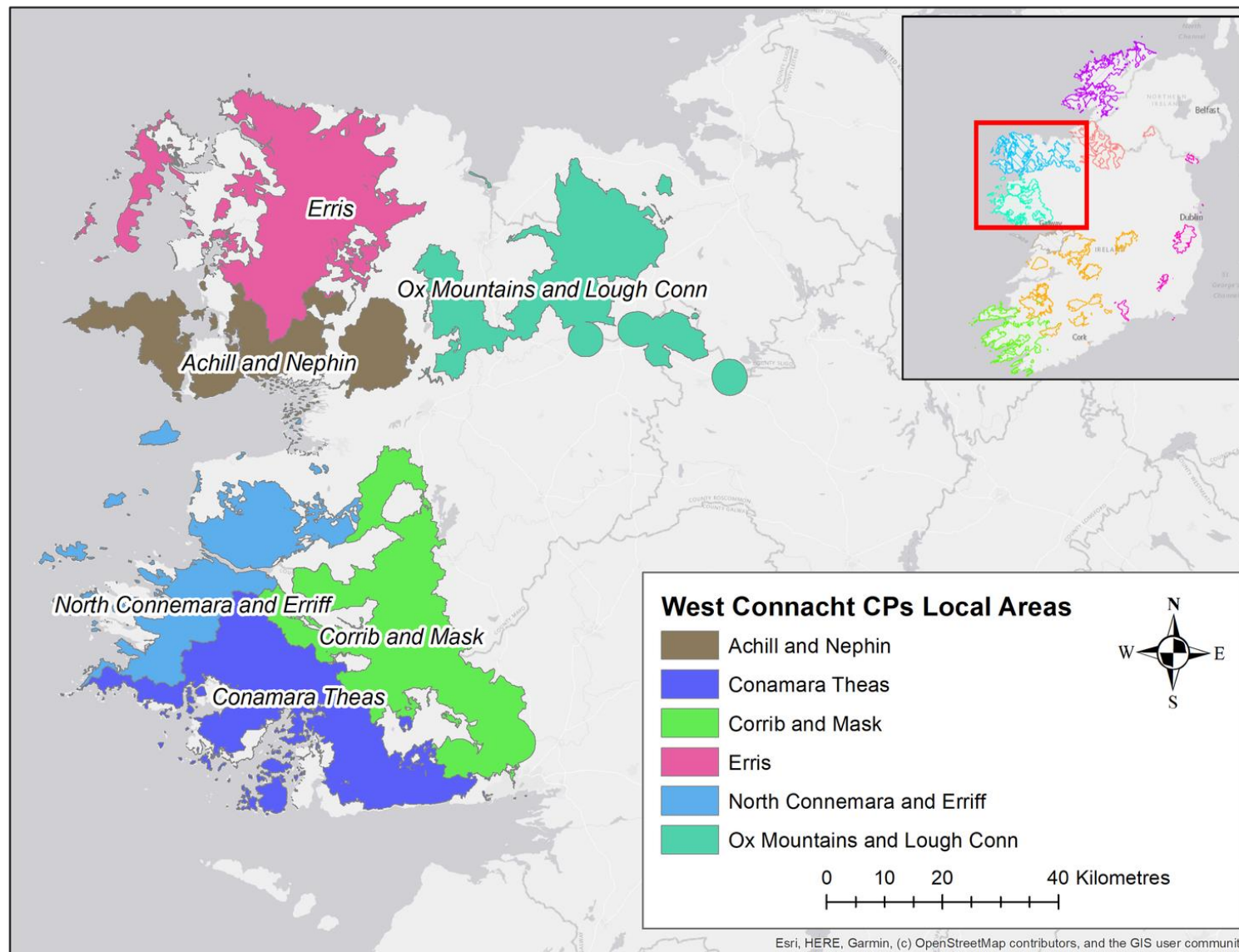


**Funded by
the European Union**



An Roinn Talmhaíochta,
Bia agus Mara
Department of Agriculture,
Food and the Marine

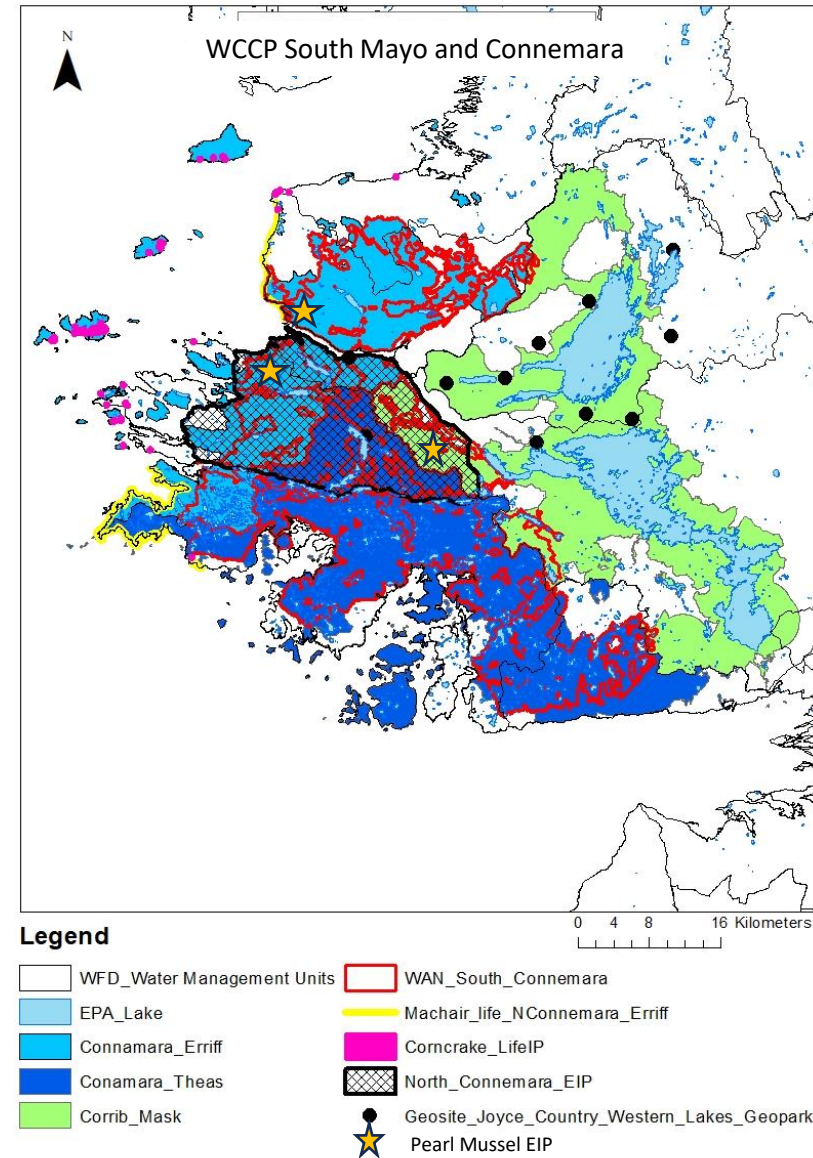
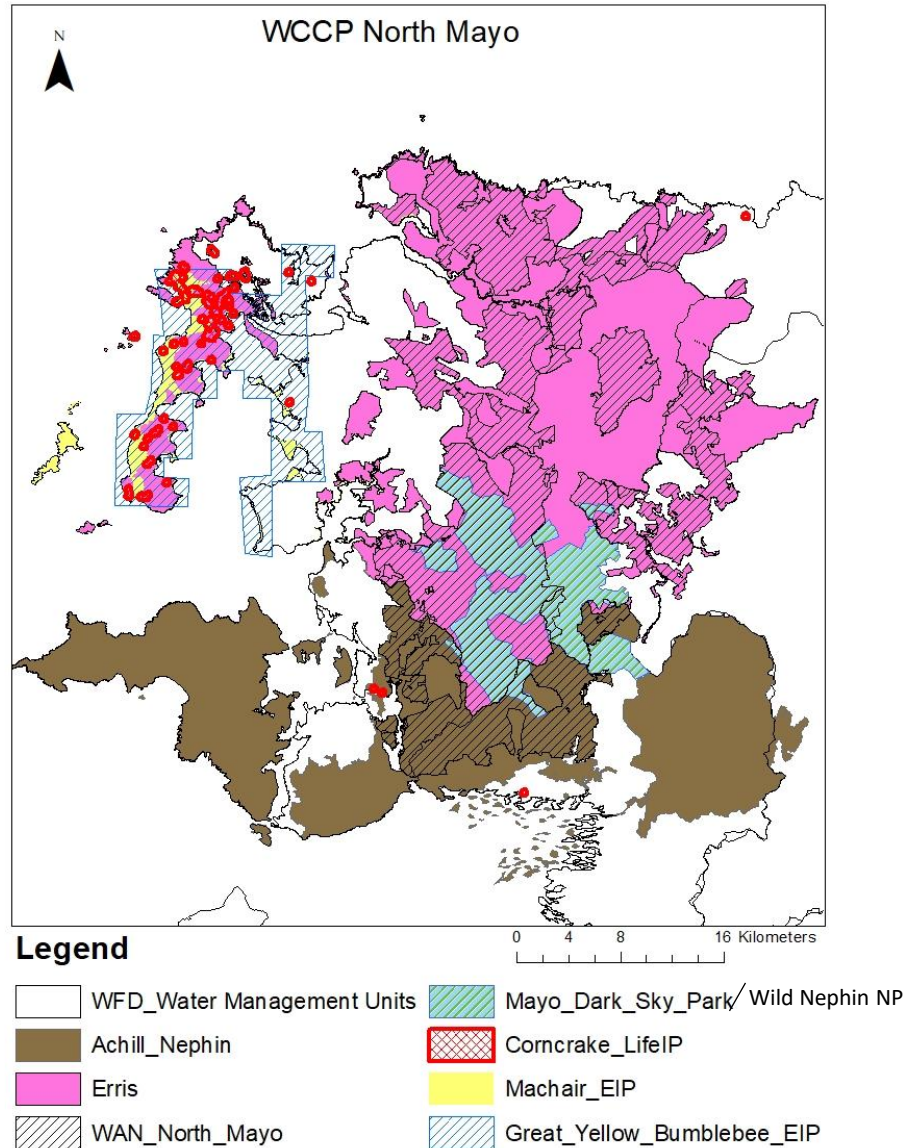




ACRES West Connacht are working directly with approximately 5000 farmers

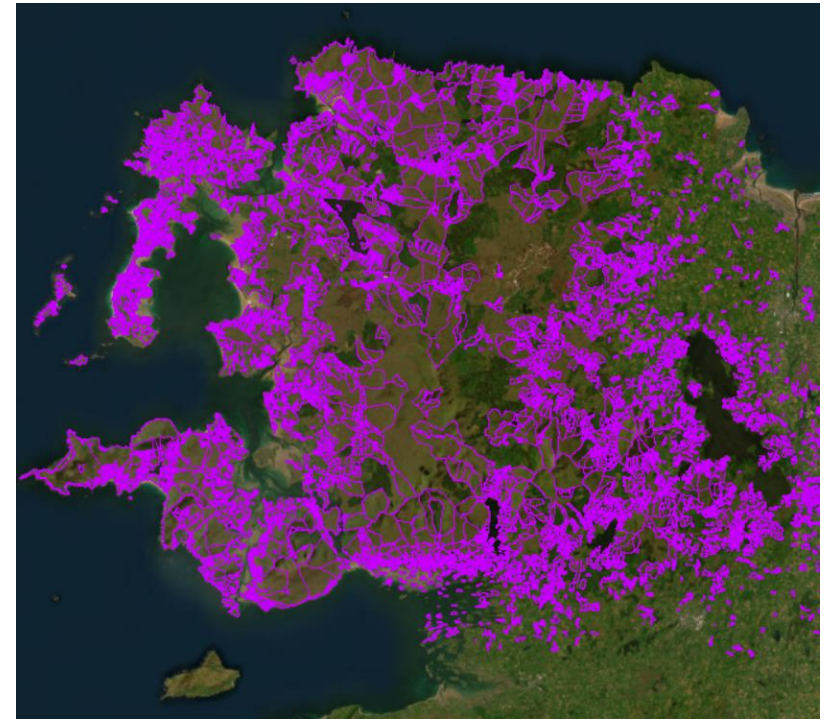


ACRES WCCP overlap with WAN and other programmes/EIP's



Protected Areas

47% of North-West Connacht CP and
62% of South Mayo/Connemara CP
occurs within European designated sites.



Protected Areas

Special Areas of Conservation (SAC) (65)

Special Protection Areas (SPA) (26)

Natural Heritage Areas (NHA) (20)

Habitats

- Peatland



- Coastal: Machair, bay, saltmarsh



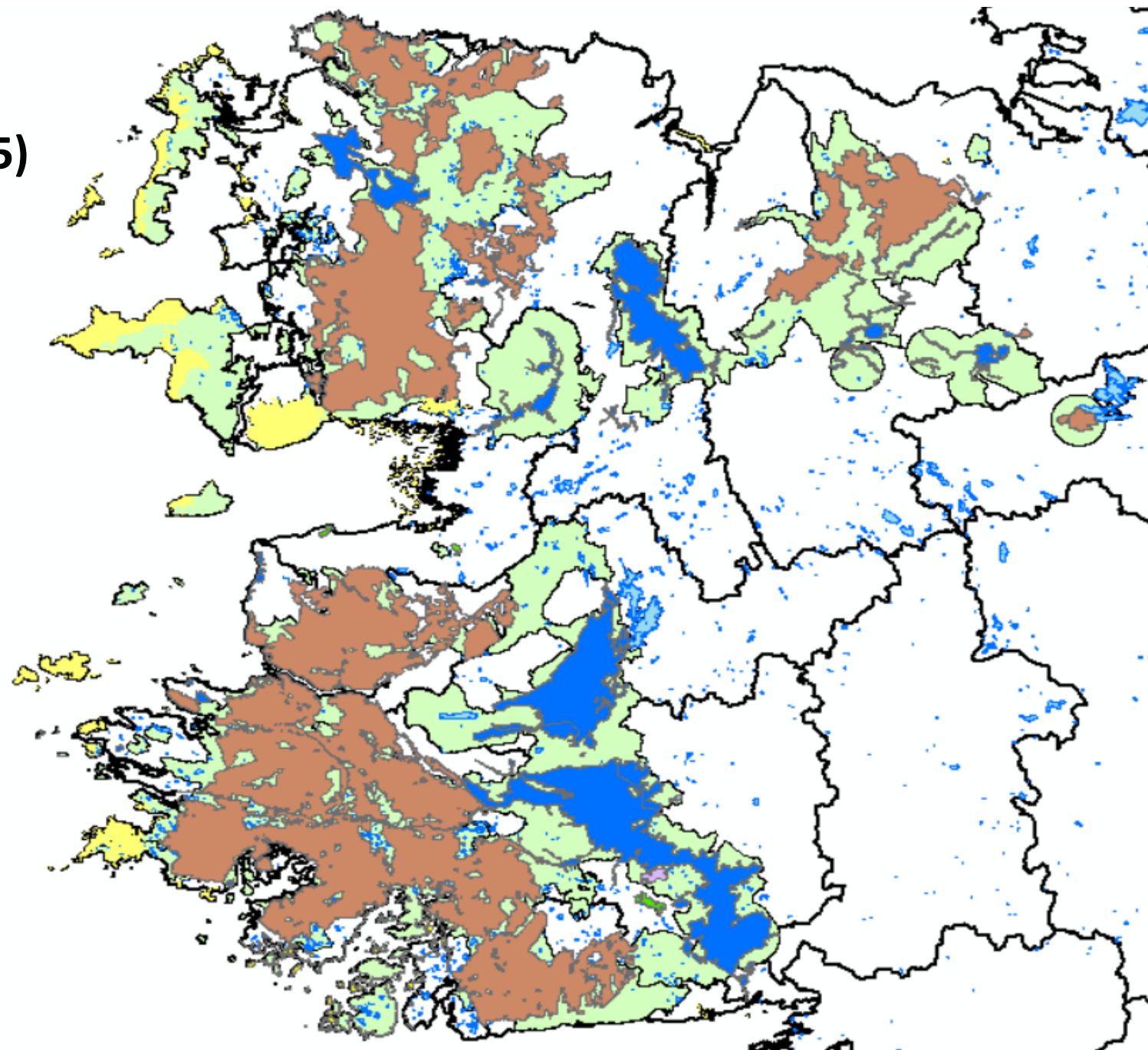
- Water: Rivers, Lakes



- Woodland



- Limestone, caves



Protected Areas

SAC (65)

SPA (26)

NHA (20)

Habitat	Birds
Tidal Mudflats and Sandflats	Red-throated Diver (<i>Gavia stellata</i>) (2)
Large Shallow Inlets and Bays	Great Northern Diver (<i>Gavia immer</i>) (3)
Reefs	Slavonian Grebe (<i>Podiceps auritus</i>) (2)
Atlantic Salt Meadows	Light-bellied Brent Goose (<i>Branta bernicla hrota</i>) (3)
Mediterranean Salt Meadows	Common Scoter (<i>Melanitta nigra</i>) (4)
Perennial Vegetation of Stony Banks	Red-breasted Merganser (<i>Mergus serrator</i>)
Annual Vegetation of Drift Lines	Ringed Plover (<i>Charadrius hiaticula</i>) (3)
Wet Heath	Sanderling (<i>Calidris alba</i>) (2)
Dry Heath	Dunlin (<i>Calidris alpina</i>) (3)
Juniper Scrub	Bar-tailed Godwit (<i>Limosa lapponica</i>) (3)
Siliceous Rocky Slopes	Curlew (<i>Numenius arquata</i>) (3)
Siliceous Scree	Sandwich Tern (<i>Sterna sandvicensis</i>) (3)
Oligotrophic Waters containing very few minerals	Golden Plover (<i>Pluvialis apricaria</i>) (6)
Dystrophic Lakes	Merlin (<i>Falco columbarius</i>) (4)
Transition Mires	Whooper Swan (<i>Cygnus cygnus</i>) (1)
Rhynchosporion Vegetation	Red-breasted Merganser (<i>Mergus serrator</i>)
Floating River Vegetation	Fulmar (<i>Fulmarus glacialis</i>) (1)
Wetland and Waterbirds	Shag (<i>Phalacrocorax aristotelis</i>) (1)
Alkaline Fens	Common Gull (<i>Larus canus</i>) (6)
Active raised bogs	Kittiwake (<i>Rissa tridactyla</i>) (1)
Transition mires and quaking bogs	Guillemot (<i>Uria aalge</i>) (1)
Degraded raised bogs still capable of natural regeneration	Razorbill (<i>Alca torda</i>) (1)
Depressions on peat substrates of the Rhynchosporion	Chough (<i>Pyrrhocorax pyrrhocorax</i>) (1)
Large Shallow Inlets and Bays	Cormorant (<i>Phalacrocorax carbo</i>) (2)
Atlantic Salt Meadows	Manx Shearwater (<i>Puffinus puffinus</i>) (1)
Coastal Lagoons	Barnacle Goose (<i>Branta leucopsis</i>) (2)
Alpine and Subalpine Heaths	Arctic Tern (<i>Sterna paradisaea</i>) (3)
Juniper Scrub	Corncrake (<i>Crex crex</i>) (1)
Machairs	Storm Petrel (<i>Hydrobates pelagicus</i>) (1)
Oligotrophic to Mesotrophic Standing Waters	Black-throated Diver (<i>Gavia arctica</i>) (1)
Old Oak Woodlands	Grey Heron (<i>Ardea cinerea</i>) (1)
Hard Water Lakes	Wigeon (<i>Anas penelope</i>) (1)
Lowland Hay Meadows	Teal (<i>Anas crecca</i>) (1)
Molinia Meadows	Red-breasted Merganser (<i>Mergus serrator</i>)
Blanket Bogs (Active)	Redshank (<i>Tringa totanus</i>) (1)
Hydrophilous Tall Herb Communities	Turnstone (<i>Arenaria interpres</i>) (1)
Perennial Vegetation of Stony Banks	Black-headed Gull (<i>Chroicocephalus ridibundus</i>) (2)
Humid Dune Slacks	Common Tern (<i>Sterna hirundo</i>) (2)
Dunes with Creeping Willow	Little Tern (<i>Sterna albifrons</i>) (1)
Decalcified Dune Heath	Gadwall (<i>Anas strepera</i>) (1)
Fixed Dunes (Grey Dunes)	Shoveler (<i>Anas clypeata</i>) (1)
Marram Dunes (White Dunes)	Tufted Duck (<i>Aythya fuligula</i>) (2)
Embryonic Shifting Dunes	Coot (<i>Fulica atra</i>) (1)
Large Shallow Inlets and Bays	Greenland White-fronted Goose (<i>Anser albifrons flavirostris</i>) (2)
Vegetated sea cliffs of the Atlantic and Baltic coasts	Lesser Black-backed Gull (<i>Larus fuscus</i>) (1)
Salicornia Mud	Lapwing (<i>Vanellus vanellus</i>) (1)
Turloughs	Pochard (<i>Aythya ferina</i>) (1)
Orchid-rich Calcareous Grassland	Hen Harrier (<i>Circus cyaneus</i>) (1)
Cladium Fens	
Limestone Pavement	
Lowland Hay Meadows	
Calcareous Rocky Slopes	
Caves	
Perennial Vegetation of Stony Banks	
Orchid-rich Calcareous Grassland	
Raised Bog (Active)	
Degraded Raised Bog	
Blanket Bogs (Active)	
Petrifying Springs	
Bog Woodland	
Siliceous Rocky Slopes	

61

Fauna
Freshwater Pearl Mussel (<i>Margaritifera margaritifera</i>) (5)
Brook Lamprey (<i>Lampetra planeri</i>)
Bottle-nosed Dolphin (<i>Tursiops truncatus</i>) (2)
Grey Seal (<i>Halichoerus grypus</i>) (2)
Marsh Fritillary (<i>Euphydryas aurinia</i>) (2)
Common (Harbour) Seal (<i>Phoca vitulina</i>) (3)
Lesser Horseshoe Bat (<i>Rhinolophus hipposideros</i>) (1)
Otter (<i>Lutra lutra</i>) (6)
White-clawed Crayfish (<i>Austropotamobius pallipes</i>) (2)
Sea Lamprey (<i>Petromyzon marinus</i>) (2)
Atlantic Salmon (<i>Salmo salar</i>) (6)
Geyer's Whorl Snail (<i>Vertigo geyeri</i>) (2)
Narrow-mouthed Whorl Snail (<i>Vertigo angustior</i>) (1)
Brook Lamprey (<i>Lampetra planeri</i>) (2)

14

Flora
Marsh Saxifrage (<i>Saxifraga hirculus</i>)
Killarney Fern (<i>Trichomanes speciosum</i>)
Slender Naiad (<i>Najas flexilis</i>)
Slender Green Feather-moss (<i>Drepanocladus vernicosus</i>)
Petalwort (<i>Petalophyllum ralfsii</i>)

5

48

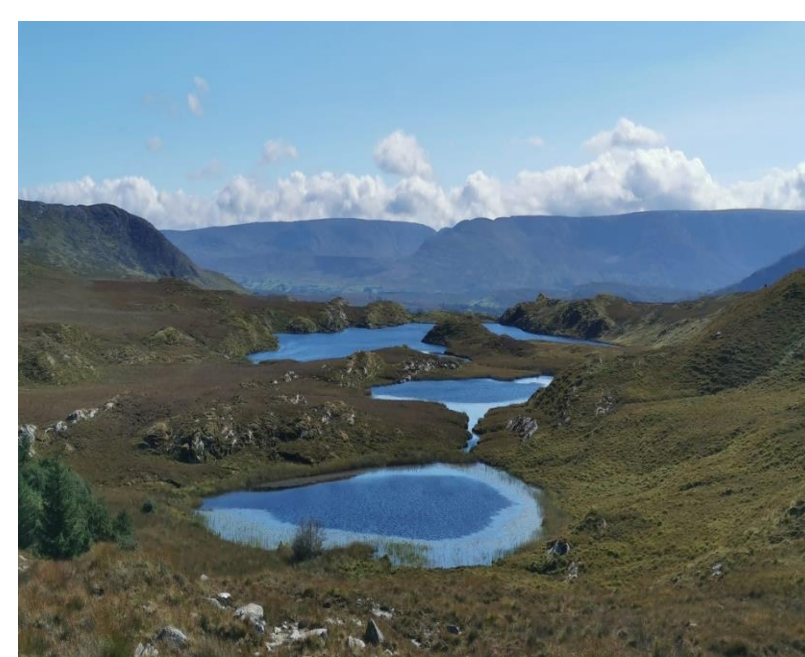




Peat/Heathland



Machairs/Dune's systems



Oligotrophic lakes



Species rich grasslands



Freshwater Pearl Mussel/Salmonid

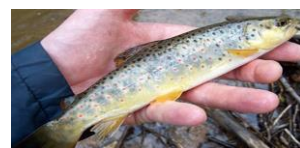
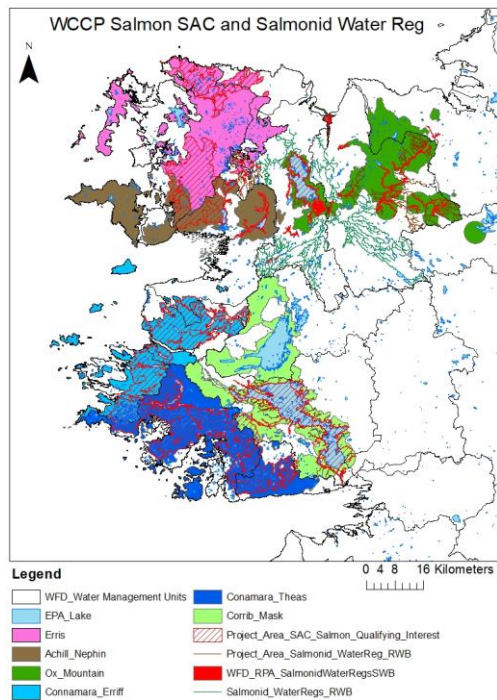


Chough/Breeding Waders



Photo: Corncrake Life

Corncrake /Hen Harrier Winter Roost sites



Photos: Birdwatch Ireland



Photo: Birdwatch Ireland

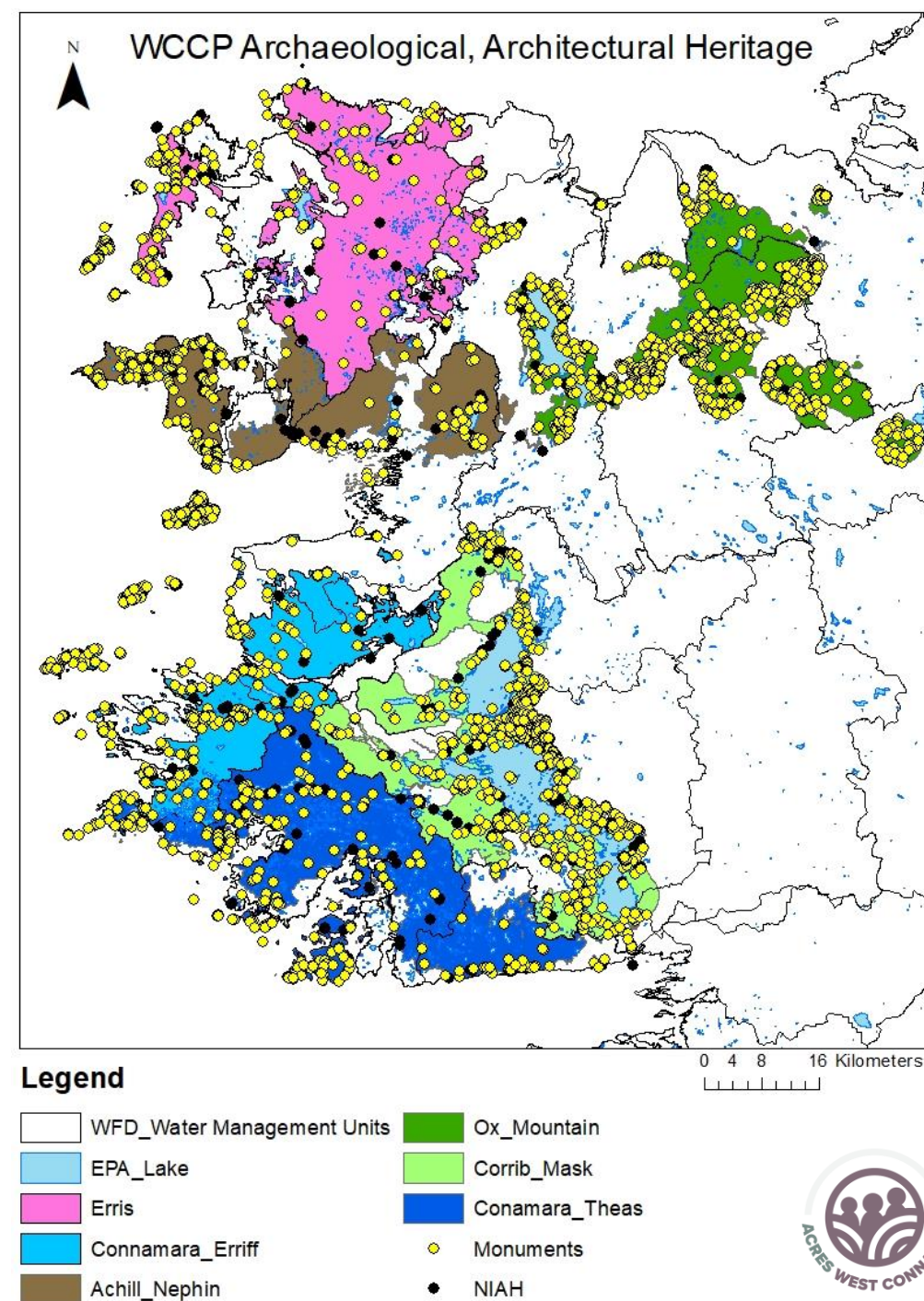
Archaeology



MacDara's Island, Connemara



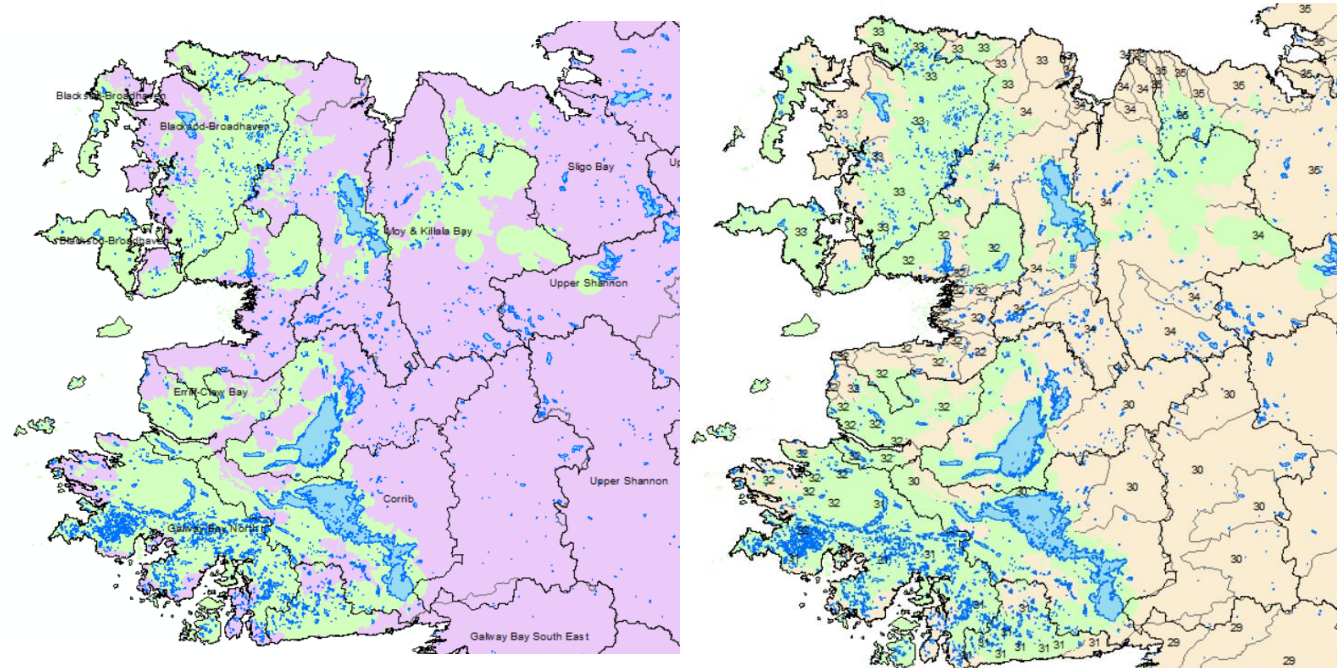
Inishkea South: Early Christian settlement on the island, prayer huts.



Hydrology

ACRES West Connaght North-West Mayo	WFD Hydrological Area
Erris	Blacksod-Broadhaven Moy and Killala Bay
Ox Mountain and Lough Conn	Sligo Bay Upper Shannon Moy and Killala Bay
Achill and Nephin	Blacksod-Broadhaven Erriff-Clew Bay Moy and Killala Bay
South Mayo Connamara	
North Connemara and Erriff	Erriff-Clew Bay
Conamara Theas	Galway Bay North
Corrib and Mask	Corrib Catchment

- There are 12 water catchments
- There are 76 sub-catchments
- 217 Lakes
- 314 Rivers



Water Framework Directive

Rivers and Lakes at risk of not achieving WFD good or high ecological status within WCCP.



Waterbody name	Waterbody type	WDF Status	Significant Pressure
Glenamoy_010	River	At Risk	Agri/For
Glenamoy_020	River	At Risk	Agri/ Hymo/ Other
Shanvolahan_010	River	At Risk	For, Hymo, Peat
Castlehill	River	At Risk	Agri
Clydagh_020	River	At Risk	For
Deel (Crossmolina)_050	River	At Risk	Other
Eignagh_020	River	At Risk	Hymo
Eignagh_030	River	At Risk	Hymo
Glenree_020	River	At Risk	Hymo
Moy_010	River	At Risk	Ag, For, Hymo
Moy_040	River	At Risk	Hymo
Mullaghanoë_010	River	At Risk	Ag, For, Hymo
Owengarve (Sligo)_010	River	At Risk	Hymo
Owengarve (Sligo)_020	River	At Risk	Hymo
Sonnagh (Moy)_010	River	At Risk	Ag, Hymo
Yellow (Knock)_010	River	At Risk	For, Hymo
Crumpaun_020	River	At Risk	For
Glenamong_010	River	At Risk	Ag/For
Glenisland_010	River	At Risk	Agri/For
Newport (Mayo)_010	River	At Risk	For, M+Q
Owengarve (Mayo)-010	River	At Risk	For/Hymo
Owengarve (Mayo)_020	River	At Risk	Ag/Hymo
Skeragh_010	River	At Risk	For
Bundorragha-020	River	At Risk	Hymo, Ind, other
Bunowen (Louisburgh)_010	River	At Risk	Agri, DWW, Peat
Carrownisky_020	River	At Risk	AG, DWW
Dawros_040	River	At Risk	Peat
Derryehorraun_010	River	At Risk	DWW, Peat.
Cashla_010	River	At Risk	For, Other, Peat
Gowlabeg_010	River	At Risk	Agri
Invermore_010	River	At Risk	For
Invermore_020	River	At Risk	For, DWW,Peat
Knockadoagh_020	River	At Risk	M+Q, Other, Peat
Owengowla	River	At Risk	Agri
Polleen_010	River	At Risk	Hymo
Recess_010	River	At Risk	Agri
Tooreenacoona_010	River	At Risk	For
Aille(Mayo)_010	River	At Risk	Other
Aille (Mayo)_030	River	At Risk	Argi, For
Aghinish_010	River	At Risk	Agri, Hymo
Clare (Galway)_010	River	At Risk	Agri, Hymo, Peat
Clare (Galway)_060	River	At Risk	Hymo
Clare (Galway)_080	River	At Risk	Hymo
Clare (Galway)_090	River	At Risk	Hymo
Cregg_010	River	At Risk	Hymo
Cammanagh-010	River	At Risk	Hymo
Finny_010	River	At Risk	Hymo
Glengawbeg_010	River	At Risk	Hymo
Headford Stream_020	River	At Risk	Agri
Owenbrin_020	River	At Risk	For, Hymo
Owenriff_Corrib)_010	River	At Risk	Hymo
Owenriff (Corrib)_020	River	At Risk	Hymo, Other
Maumwee	Lake	At Risk	Hymo

Waterbody name	Waterbody type	WDF Status	Significant Pressure
Cross	Lake	At Risk	Agri
Carrowmore	Lake	At Risk	Other
Cullin	Lake	At Risk	Ag, Other
Conn	Lake	At Risk	Other
Beaghcauneen	Lake	At Risk	Other
Aughrusbeg	Lake	At Risk	Other
Tully	Lake	At Risk	Ag
Nambrackmore Cushatrower	Lake	At Risk	Other
Maumwee	Lake	At Risk	Hymo
Ross GY	Lake	At Risk	Other
Loughanillaun Maan Cross	Lake	At Risk	Hymo
Mask	Lake	At Risk	Agri, DWW, Other

10 LAKES



42 Rivers

WCCP Threats and Pressures

- Hydromorphology impacts
- Organic and chemical pollution
- Eutrophication
- Invasives species
- Peat extraction or alteration
- Grazing pressures
- Fire risk/Unprescribed burning
- Dumping
- Land abandonment
- Quarrying

The extent of these threats will become apparent in the scorecard results.



Area of heavy poaching



Dumping





Exposed Peatland soils



Machair Connemara



Bracken Management



Turbary on commonage



Exposed substrate/ destabilised Machair



Invasive Species

Water Quality



Very important in all areas



Working within blue dot catchments



Right measure in the right place



Use PIP maps to target water quality measures

Water Quality





it is important to allow continuous vegetation cover through sustainable stocking rates, to try and reduce the impacts of overgrazing and protect watercourses (FPM habitats).



Fenced Drain



Developing Buffer Zone along main River Channel



Screening Matrix and Appropriate Assessment

All actions have gone through a screening process

Screening all records which overlap with proposed NPI action:

1. Spatial features (OS waterline, archaeology, slope, motorway, woodland etc)
2. Designations (SCA/SPA and qualifying interests)
3. Local Area Plan Objectives
4. Scorecard data

AA process and risk of rejection

- GLAMS may reject NPI:
 - CP land only
 - Non CP parcels only
 - Non-CP Parcels or parcels declared as arable
 - Farm buildings
 - OSI marked watercourses
- Upon submission all NPI will go through a screening process to ensure it can be delivered at minimal risk to habits and species.

Excluded Habitats:

NPIs will not be delivered on the following.

- Intertidal areas
- Saltmarshes
- Marram grass dunes
- Sea cliffs
- Mountain cliffs
- Scree Slopes
- Caves
- Reedbeds
- Permanent natural watercourses
- Juniper Scrub
- Yew woodlands
- Mineral Flushes

Reason for rejection of NPI Actions include:

- **Action not suitable for the habitat e.g. Coastal and Peatlands:**



NPI Actions not allowed on Coastal/Peatland sites include: Wild Bird Cover Strips, Winter Stubble. Small woodland 160/300 trees, Planting new hedgerows, Field Margin 3m, Planting traditional orchards.

Action not suitable for bird species



Breeding Wader

Parcels closed from 15th March - 30th June

NPI Action not allowed in known Breeding Wader sites:
Wild Bird Cover Strips, Winter Stubble. Small woodland
160/300 trees, Planting new hedgerows, Field Margin
3m, Planting traditional orchards.



Hen Harrier

Winter Areas used August - March

NPI Action not allowed in NPI Action not
allowed in known Hen Harrier Winter
Areas include Bracken strimming
/mechanical, removal of scrub.

Protect and Maintain what is already there:

Action not suitable for:

- Species rich grassland, no need for any action to enhance biodiversity.
- Woodland
- NPI Culvert – only allowed on drains not on OSI water line
- Area of cultural heritage/Zone of notification of an archaeological monument.

Contact us

Email: info@acreswestconn.ie

Website: <https://www.acreswestconnacht.ie/>

Twitter: @ACRESWestConn

Facebook: ACRES West Connacht

Advisor WhatsApp group

All local area staff contact information will be available on the website

