



SOUTH KERRY DEVELOPMENT  
PARTNERSHIP CLG.

# ACRES CO-OPERATION PROJECT KERRY WEST CORK

## ACRES

Agri-Climate Rural Environment Scheme



An Roinn Talmhaíochta,  
Bia agus Mara  
Department of Agriculture,  
Food and the Marine



**Funded by  
the European Union**



SOUTH KERRY DEVELOPMENT  
PARTNERSHIP CLG.

# ACRES CO-OPERATION PROJECT KERRY WEST CORK

- ▶ South Kerry Development Partnership tendered for and secured the contract to roll out the ACRES CP in Kerry & West Cork on behalf of DAFM, based on success of the award winning MacGillycuddy Reeks & Eco-social farming EIP Projects, and locally led on the ground experience working with farmers and the farming communities in South Kerry for over 30 years.
- ▶ South Kerry Development Partnership (SKDP) is a local development not for profit company, focussing on rural & community development, since 1991.
- ▶ SKDP rolls out many programmes including: LEADER (RDP), SICAP, The Walks Scheme, The Local Employment Service, Rural Social Schemes, TÚS and Skillnet.



# ACRES CO-OPERATION PROJECT KERRY WEST CORK

## CP Team

- ▶ Patricia Deane, Project Manager
- ▶ Mary Toomey- Senior Ecologist
- ▶ Marianah Sahmad- Project Administrator
- ▶ Stephen O'Shea- Beaufort
- ▶ Luke Myers- Beaufort
- ▶ Michael Morrissey- Camp
- ▶ Catherine Heduan-Camp
- ▶ Dáire O'Hare Doherty- Kenmare
- ▶ Tiernan O'Shea- Kenmare
- ▶ Howard Cross- Bantry
- ▶ Brogan Jones- Bantry
- ▶ Rhona Coughlan-Camp
- ▶ Luke Sullivan-Beaufort
- ▶ Caoimhe Mulcahy-Kenmare
- ▶ William Hayes-Bantry
- ▶ Stephen Mulkearn-Bantry
- ▶ Fiach Byrne-Camp
- ▶ Siún Ní Cheallaigh- Non CP Commonages

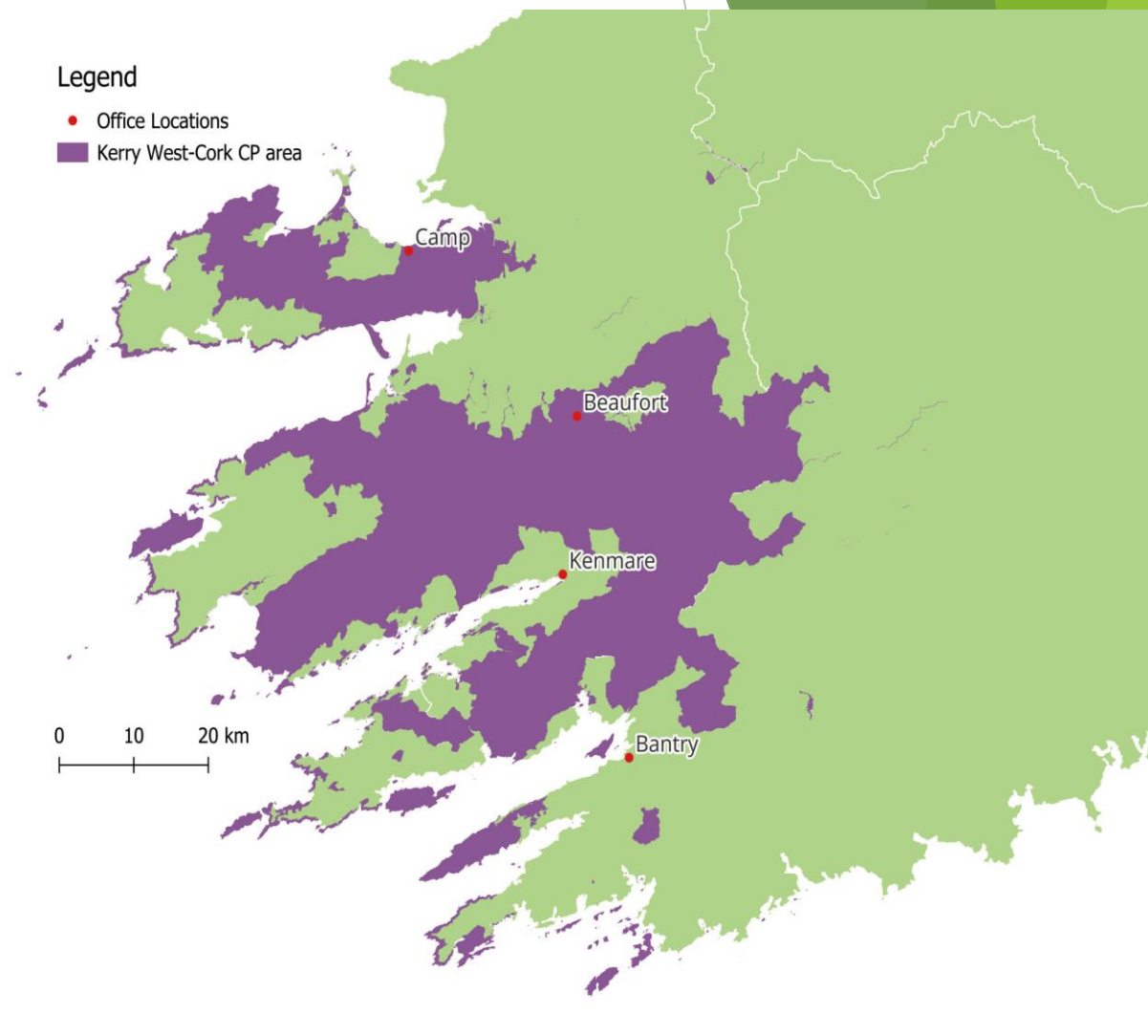


SOUTH KERRY DEVELOPMENT  
PARTNERSHIP CLG.

# ACRES CO-OPERATION PROJECT KERRY WEST CORK

## CP Team offices

- Camp- Dwyer's Digital Hub,
- Beaufort Village- The Old Barracks,
- SKDP Offices, 21 Henry Street, Kenmare &
- West Cork Development Partnership, The Warner Centre, Bantry.





SOUTH KERRY DEVELOPMENT  
PARTNERSHIP CLG.

# ACRES CO-OPERATION PROJECT KERRY WEST CORK

## CP Team

- ❖ Team have varying skillsets- from working on previous EIP projects: Pearl Mussel, IRD Duhallow Farming for Blue Dot Catchment, Eco-social farming & MacGillycuddy Reeks, farm advisory experience, environmental consultancy with qualifications in Ecology, Ecological Assessments, Environmental Science, Wildlife Biology, Zoology, Climate Change with specialist ornithologists, hydrologists etc.



SOUTH KERRY DEVELOPMENT  
PARTNERSHIP CLG.

# ACRES CO-OPERATION PROJECT KERRY WEST CORK

## Local Action Plan

***‘To work closely with the custodians of the land - the farmers and their farm advisors to support them to improve the environmental and agricultural condition of their land in a sustainable manner’.***

- ▶ The ACRES Kerry/ West Cork CP Project has five high level objectives:
  - 1) The protection of watercourses;
  - 2) Supporting carbon storage and sequestration and the protection of rare and threatened habitats;
  - 3) Supporting the conservation of rare and threatened species;
  - 4) The management of invasive species and
  - 5) Delivery of training to farmers & advisors.

# ACRES CO-OPERATION PROJECT KERRY WEST CORK

- 37 Special Areas of Conservation (SACs)
- 14 Special Protection Areas (SPAs)
- 9 Natural Heritage Areas (NHAs)
- 66 Proposed Natural Heritage Areas (pNHAs)
- ▶ Within these sites there are:
  - 40 Annex I Habitats
  - 20 Annex species (excluding birds)
  - 14 Annex I Birds (plus 31 other rare or threatened bird species for which the SPAs are designated)
  - 40% of watercourses have high-status objective
  - 3359 National Monuments



# ACRES CP- Kerry West Cork- possible NPIs



SOUTH KERRY DEVELOPMENT  
PARTNERSHIP CLG.



Gappy hedgerow

Photo credit: MacGillycuddy Reeks EIP



Hedge rejuvenation- spindle

Photo credit: Eco-Social Farming EIP



Hedge rejuvenation- hedge  
laying adjacent to earth bank

Photo credit: Eco-Social Farming EIP



# ACRES CP- Kerry West Cork- possible NPIs

- New hedgerows- this action is unavailable on within archaeological monument buffer zones and within 30 m of an archaeological monument.
- Not available on SAC/SPA non CP parcels
- Is not be permitted on a peatland scorecard, and consider suitability of applying in other areas i.e. Chough, coastal etc.
- Not available on a field boundary, unless farmer has control of and access to both sides.





# ACRES CP- Kerry West Cork-possible NPIs



SOUTH KERRY DEVELOPMENT  
PARTNERSHIP CLG.



\* Tree  
planting not a  
suitable  
action  
adjacent to a  
Pearl Mussel  
catchment

(Photo credit: Pearl Mussel Project Ltd)

Bank erosion and river sedimentation-Riparian Margin (Sheep Fencing)



# ACRES CP- Kerry West Cork- need to follow NPI specifications





# ACRES CP- Kerry West Cork- possible NPIs



Riparian Zone. Pasture Pump- need to be at least 20m from a watercourse, as per NPI specifications.



Solar Powered Pump  
Photo credit: IRD Duhallow Farming for  
Blue Dot Catchment EIP



# ACRES CP- Kerry West Cork- Considerations



**Selecting Features** - Click on the map on the feature you want to select. A window will appear if there is more than one selectable feature at the point where you have clicked. Click on an item from the list in the window to select the feature.

**Select Feature**

ID	Label	Layer
3437817	--	NMS - Sites and Monuments 16
13049	--	NMS - Sites and Monuments 21
1883990	KWC1593627	Grassland-WP
49126712	D11615059	All Parcels

**Summary**

Label:  
Layer Name: TDTP\_NATIONAL\_MONUMENTS\_21  
Layer Title: NMS - Sites and Monuments 21  
Unique ID: 13049

**History**

**Attributes**

BUFF\_DIST: 75  
CLASSCODE: RATH  
CLASSDESC: Ringfort - rath  
CO\_ID: 5  
CREATION\_DATE: 2021-04-15 19:53:20.0  
ENTITY\_ID: C016010  
FEATURE: 415  
ITM\_E: 481615  
ITM\_N: 538546  
LATITUDE: 51.586988  
LINKS: [Click here to view](#)  
LONGITUDE: -9.708459  
ORIG\_FID: 13048  
SMRS: C0129-006----  
UPDATE\_DATE: 2021-04-15 19:53:20.0

**Geometry Information**



# ACRES CP- Kerry West Cork-possible NPIs



SOUTH KERRY DEVELOPMENT  
PARTNERSHIP CLG.

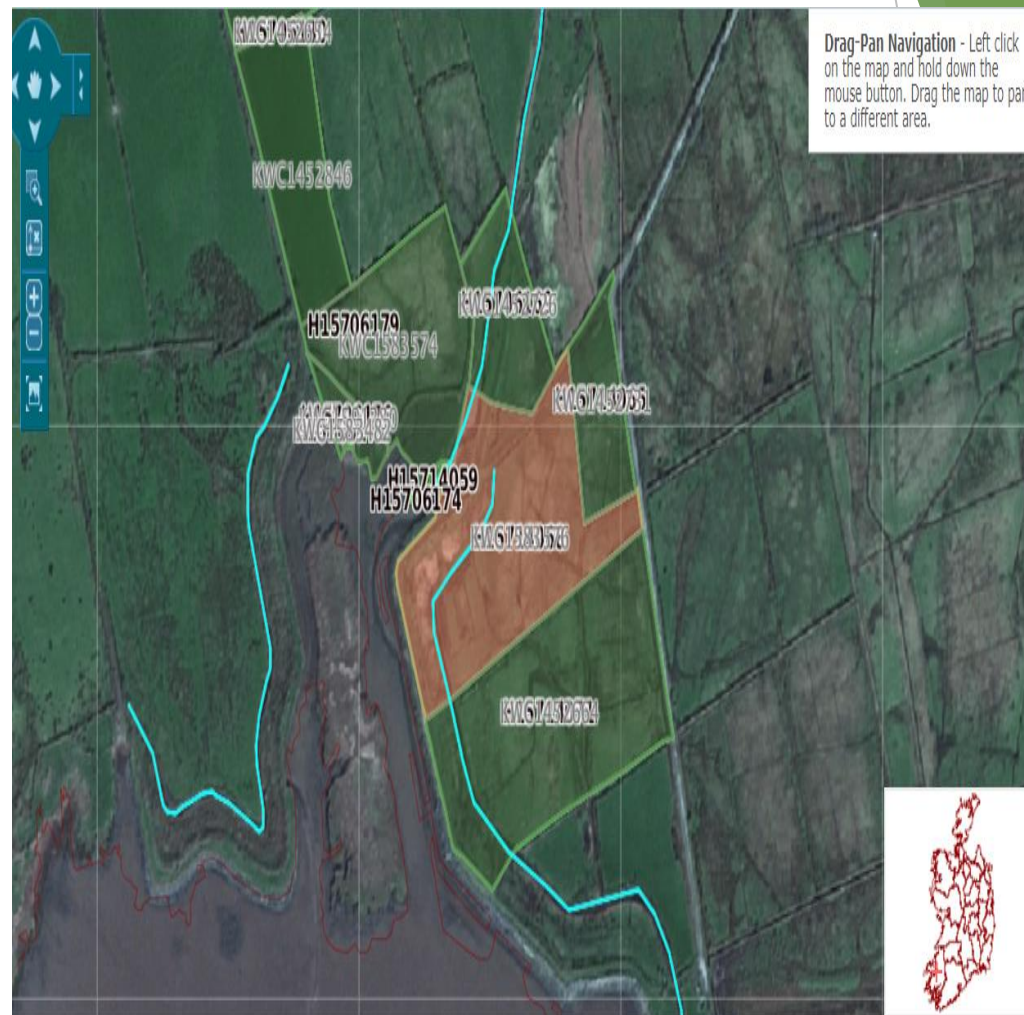
Update

Layer Grouping Layer Precedence

- ☐ AgriSnap Photos (Agent)
- ☒ All Parcels
- ☐ All Sub Features
- ☐ Co-operation Project Zone
- ☒ Counties
- ☐ GLAS Chough
- ☐ GLAS Hen Harrier
- ☒ OPW arterial drainage
- ☐ PMP Commonage habitat plots
- ☐ PMP Private habitat plots
- ☐ Raised bog 250m buffer
- ☐ EPA
- ☐ GSI
- ☐ National Monument Service
- ☐ NPWS



Culvert- not permitted on a natural watercourse or arterial drainage channels.



Drag-Pan Navigation - Left click on the map and hold down the mouse button. Drag the map to pan to a different area.

Check GLAM layer for OPW arterial drainage



# ACRES CP- Kerry West Cork-possible NPIs



SOUTH KERRY DEVELOPMENT  
PARTNERSHIP CLG.



Not suitable for bracken treatment-  
slope & protecting watercourse



Bracken treatment-after  
1<sup>st</sup> cut



# ACRES CP- Kerry West Cork-possible NPIs



Water trough- 20m from  
watercourses

Photo credit: IRD Duhallow Farming for Blue  
Dot Catchment EIP



Riparian Planting (this example does not  
have tree guard or stake)

Photo credit: IRD Duhallow Farming for Blue Dot  
Catchment EIP



# ACRES CP- Kerry West Cork- Considerations



- ▶ When planning NPIs:
  - Care when planning any NPIs adjacent to watercourses
  - Consideration of archaeological monuments in field
  - Be mindful of existing habitat type, or known species in the area i.e. Pearl Mussel
  - Refer to specifications when planning all actions with farmers
  - Consider NPIs to improve results based score
  - Consult with CP Team for advice if needed



Thank you all for listening!

Questions?