

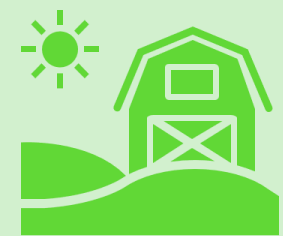


An Roinn Talmhaíochta,  
Bia agus Mara  
Department of Agriculture,  
Food and the Marine

# Non-Productive Investments

Advisor Training  
October 2023

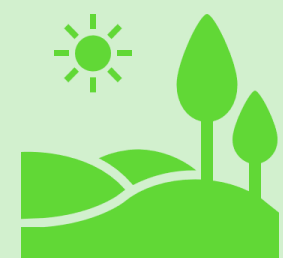
# What are Non-Productive Investments?



Farm-level standalone actions available to ACRES CP participants to address issues in low scoring parcels.



Contribute to the local conservation objectives and increase your clients' scores and payments.



To be undertaken on advice of the advisor and supported by the CP Team as part of an ACRES participant's Annual Work Plan.



# NPI categories



- Habitat and Wildlife Support



- Farm Infrastructure



- Scrub/Track – Burren/Aran CP zone only



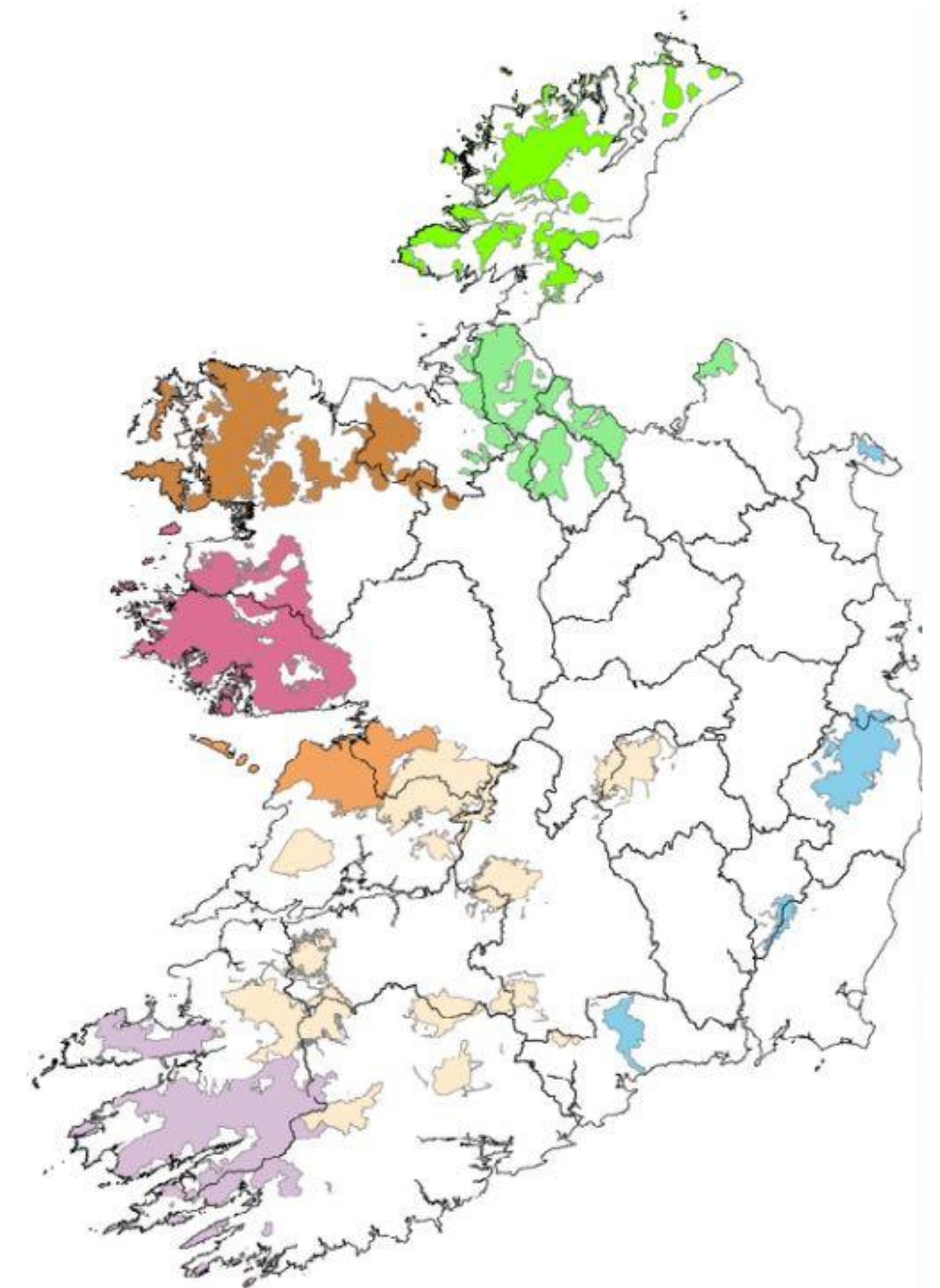


NPI Habitat and Wildlife Support	NPI Infrastructure	NPI Scrub/Track
<ul style="list-style-type: none"><li>○ Barn Owl/Kestrel Nest Box</li><li>○ Bat Boxes</li><li>○ Bracken Strimming</li><li>○ Bracken Mechanical</li><li>○ Conservation of Cultural Heritage Sites Arable</li><li>○ Conservation of Cultural Heritage Sites Grassland</li><li>○ Field Margin 3m</li><li>○ Hedge Rejuvenation</li><li>○ Planting New Hedgerows</li><li>○ Planting Traditional Orchard 10 trees</li><li>○ Planting Trees</li><li>○ Repair of Traditional Stone Wall 1 or 2 sides</li><li>○ Riparian Margin Tree planting</li><li>○ Riparian Margin</li><li>○ Riparian Margin (Sheep fencing)</li><li>○ Rodenticide Free Rodent Control</li><li>○ Small Woodland 160 trees 0.05Ha</li><li>○ Small Woodland 300 0.09Ha</li><li>○ Swallow Boxes</li><li>○ Swift Boxes</li><li>○ Wader Scrapes</li><li>○ Wild Bird Cover Plot</li><li>○ Wild Bird Cover Strips</li><li>○ Winter Stubble</li></ul>	<ul style="list-style-type: none"><li>○ Culverts</li><li>○ Fencing Barbed Wire</li><li>○ Fencing Permanent Electric</li><li>○ Fencing Sheep Wire</li><li>○ Installation of Gates</li><li>○ Installation of Heritage Gates</li><li>○ Mobile Cattle Feed Troughs</li><li>○ Mobile Feed Storage Bins</li><li>○ Pasture Pumps</li><li>○ Rainwater Catchers</li><li>○ Solar Electric Fencer Unit</li><li>○ Solar Pumps</li><li>○ Water Storage Tanks</li><li>○ Water Troughs</li></ul>	<ul style="list-style-type: none"><li>○ Area Scrub Removal Hand Tools High</li><li>○ Area Scrub Removal Hand Tools Med</li><li>○ Area Scrub Removal Hand Tools Low</li><li>○ Area Scrub Removal Hand Tools Scattered</li><li>○ Strip 2m Scrub Removal Hand Tools High</li><li>○ Strip 2m Scrub Removal Hand Tools Low</li><li>○ Strip 4m Scrub Removal Hand Tools High</li><li>○ Strip 4m Scrub Removal Hand Tools Low</li><li>○ Track Re-Surfacing Gravel</li></ul>

Detailed list of NPIs

# Role of CP Teams

- Work with the Department to develop the list of NPI actions available
- Provide advisors and farmers with local, detailed, expert advice on how to maintain and improve habitats at farm and landscape level by way of Non-Productive Investments and Landscape Actions
- Screen NPI Annual Works Plan (AWP)



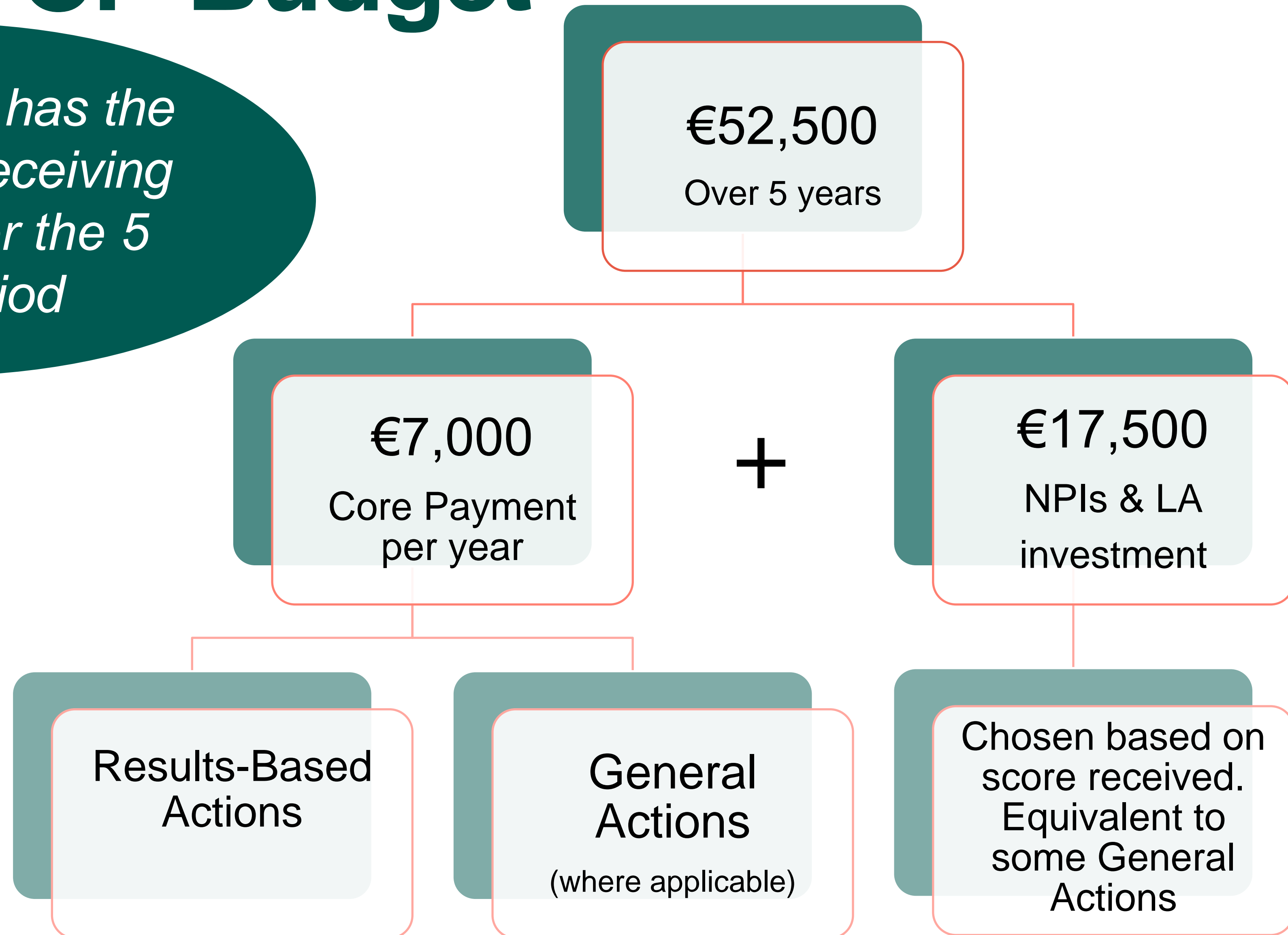
8 CP Zones  
5 CP Teams



# ACRES CP Budget



*Every farmer has the potential of receiving €52,000 over the 5 year period*



# NPI & LA Budget



- €17,500 over the 5-year period
- If max Core Payment not reached in any one year - the balance will also be incorporated into the NPI / Landscape action budget
- Funds available for the life of the contract provided:
  - Overall total of €52,500 is not exceeded
  - At least €7,000 is available for Core payment each year

# Example



Year 1: Core results-based payment = €5,250

Max Core payment €7,000

$€7,000 - €5,250 = €1,750$

Year 2: NPI/LA budget increased by €1,750

***A low score in Year 1 does not mean those funds are lost to your clients.***



# Application, Approval & Payment



## Application & Screening

- Open GLAM to create NPI Annual Works Plan (1 per year).
- Draw all and any actions as appropriate. Save and Submit.
- CP Team screens all actions

## Approval

- DAFM process - usual validations procedure.
- Approval/rejection letter issues.

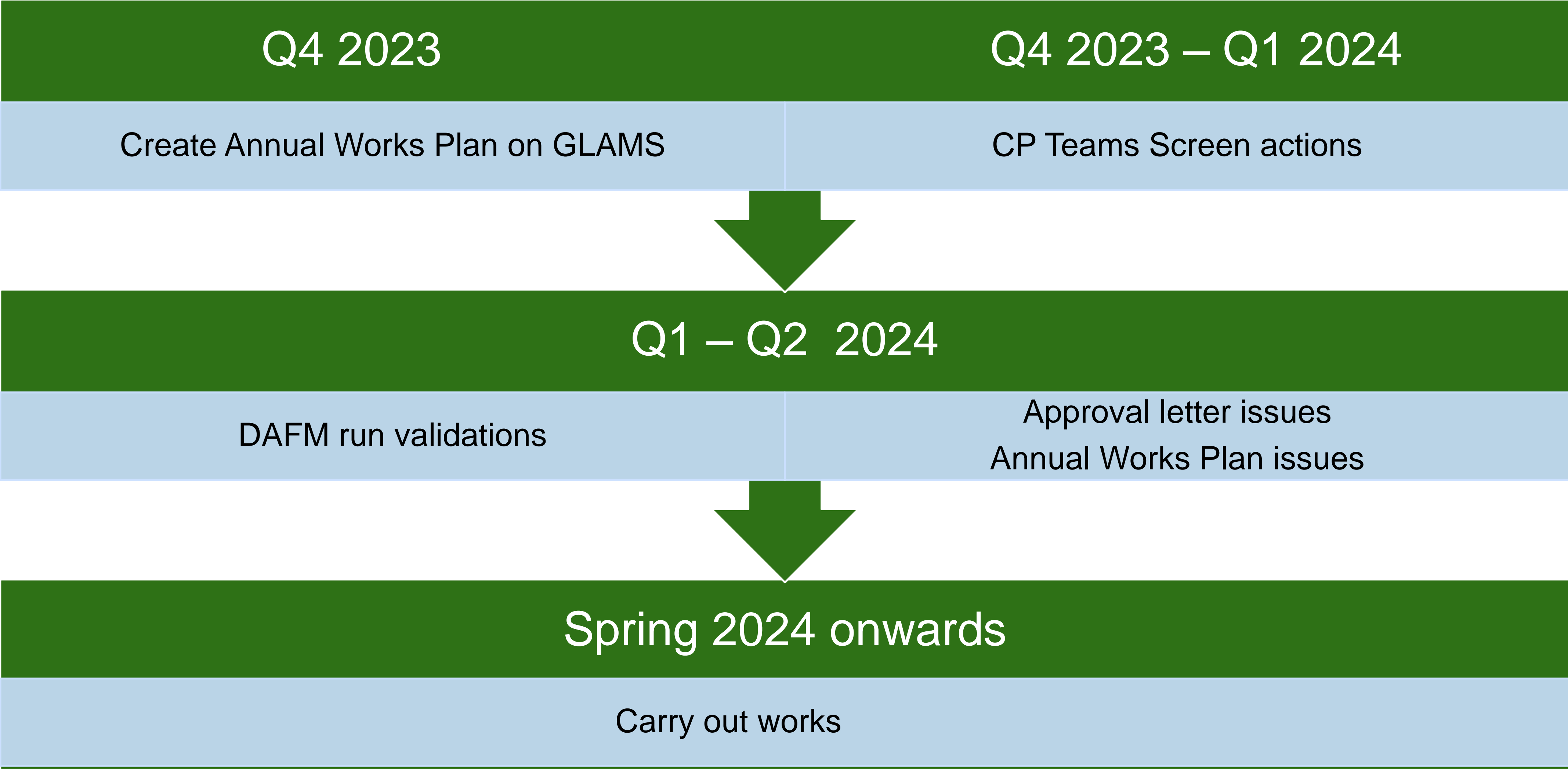
## Works

- Only on receipt of approval letter from DAFM may works commence. Screening decision on GLAM screen is not approval decision

## Payment

- One payment claim per Annual Woks Plan approved.

# NPI Timeline







Further Questions

[acrescp@agriculture.gov.ie](mailto:acrescp@agriculture.gov.ie)

[www.gov.ie/ACRES](http://www.gov.ie/ACRES)