

# IRELAND NORTH WEST COAST CROHY HEAD TO BLOODY FORELAND INCLUDING ARAN ISLAND

DEPTHS IN METRES  
SCALE 1:30 000

Depths are in metres and are reduced to Chart Datum, which is approximately the level of Lowest Astronomical Tide.  
 Heights are in metres. Underlined figures are drying heights above Chart Datum. Vertical clearance heights are above Highest Astronomical Tide. All other heights are above Mean High Water Springs.  
 Positions are referred to Ordnance Survey of Ireland Datum which is NOT a WGS84 compatible datum (see SATELLITE-DERIVED POSITIONS note).  
 Navigational marks: IALA Maritime Buoyage System - Region A (Red to port).  
 Projection: Transverse Mercator.  
 Source: The origin, scale, date and limits of the hydrographic information used to compile the chart are shown in the Source Diagram. The topography is derived chiefly from Ordnance Survey of Ireland maps.

**SATELLITE-DERIVED POSITIONS**  
 (CAUTION - see CHART ACCURACY Note)  
 Positions obtained from Global Navigation Satellite Systems, such as GPS, are normally referred to WGS84 Datum. Such positions must be adjusted by 0-04 minutes EASTWARD before posting on this chart.  
 Example:  
 WGS84 Position 55°05'22N 8°28'07W  
 lat/long adjustments 0-00 0-04 E  
 Adjusted Position 55°05'22N 8°28'03W

**CHART ACCURACY**  
 Owing to the age and quality of the source information, some detail on this chart may not be positioned accurately. Particular caution is advised when navigating in the vicinity of dangers, even when using an electronic positioning system such as GPS.

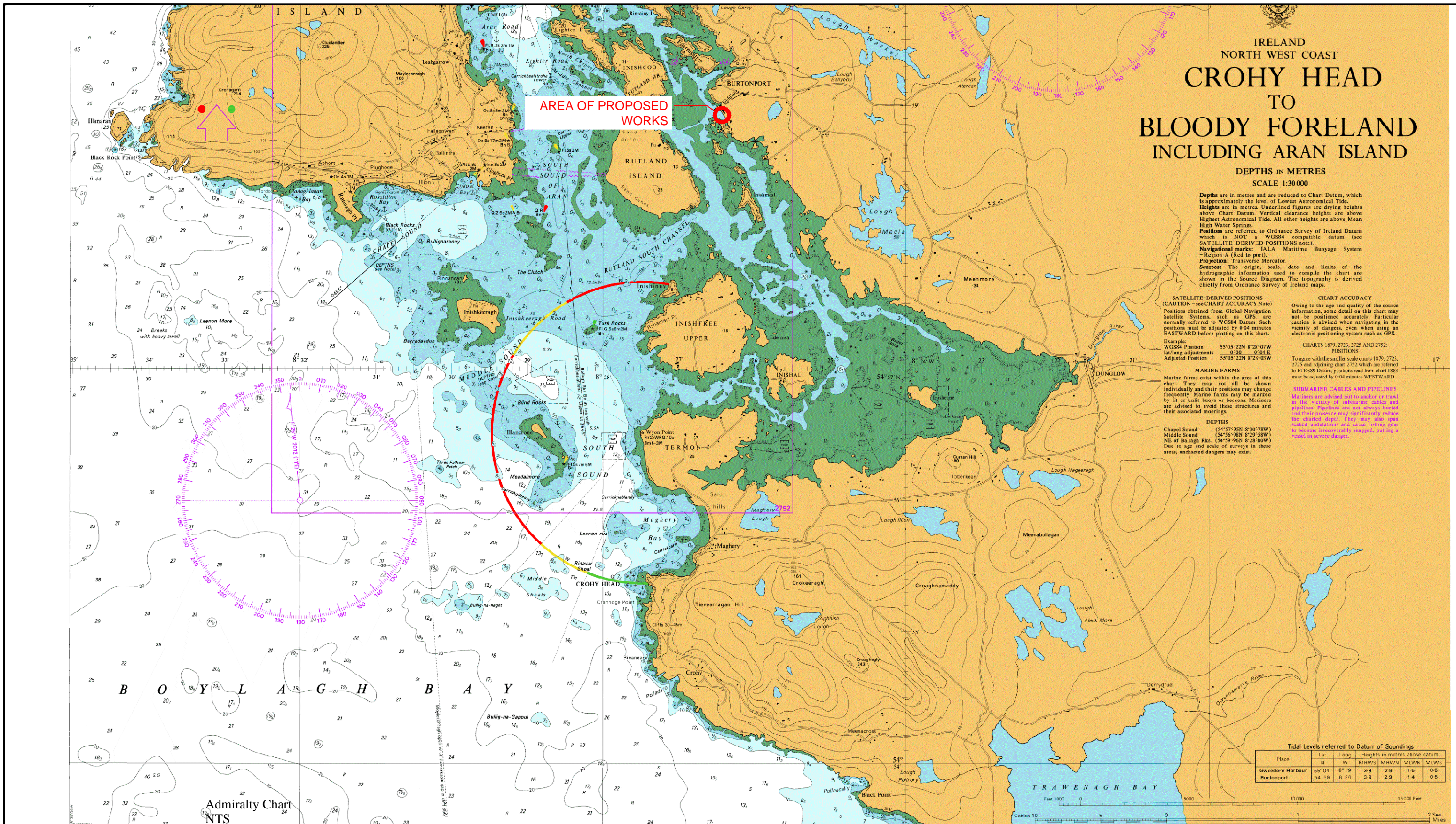
**CHARTS 1879, 2723, 2725 AND 2752**  
 POSITIONS  
 To agree with the smaller scale charts (1879, 2723, 2725 and adjoining chart 2752 which are referred to ETRS89 Datum, position read from chart 1883 must be adjusted by 0-04 minutes WESTWARD.

**MARINE FARMS**  
 Marine farms exist within the area of this chart. They may not all be shown individually and their positions may change frequently. Marine farms may be marked by lit or unlit buoys or beacons. Mariners are advised to avoid these structures and their associated moorings.

**DEPTHS**  
 Chapel Sound (54°57'05N 8°30'78W)  
 Middle Sound (54°56'08N 8°29'58W)  
 NE of Balagh Rks. (54°59'06N 8°28'80W)  
 Due to age and scale of surveys in these areas, uncharted dangers may exist.

**SUBMARINE CABLES AND PIPELINES**  
 Mariners are advised not to anchor or trawl in the vicinity of submarine cables and pipelines. Pipelines are not always buried and their presence may significantly reduce the charted depth. They may also span seabed undulations and cause fishing gear to become irretrievably snagged, posing a vessel in severe danger.

Tidal Levels referred to Datum of Soundings						
Place	Lat		Long		Heights in metres above datum	
	N	W	MHWS	MHWN	MLWN	MLWS
Gweedore Harbour	56°04'	8°19'	3.8	2.9	1.5	0.5
Burtonport	54.59	8°28'	3.9	2.9	1.4	0.5



**Comhairle Chontae Dhún na nGall**  
**Donegal County Council**  
**Roads & Transportation Services**  
 Tel:(074)9172222 Fax:(074)9141793 www.donegal.ie  
 J. McLaughlin Director of Roads & Transportation



Rev	By	Date	Description
DMS I.D.			UPN-8888-Rev A.

Filepath: \\dcc-filer\marine\DAFM\DAFM 2022\Burtonport Phase 3\CAD		Drawing No: <b>AD 01</b>	Revision: -
Project: Burtonport Phase 3			
Component: Foreshore Lease Plan			
Title: Admiralty Chart			
Drawn: RH	Scales: NTS		
Checked: CS	Filename: Burtonport Foreshore Plan		
Approved: CM	Date: 17/02/2022		