



Provision and Management of Recreation Facilities and Infrastructure **2022**

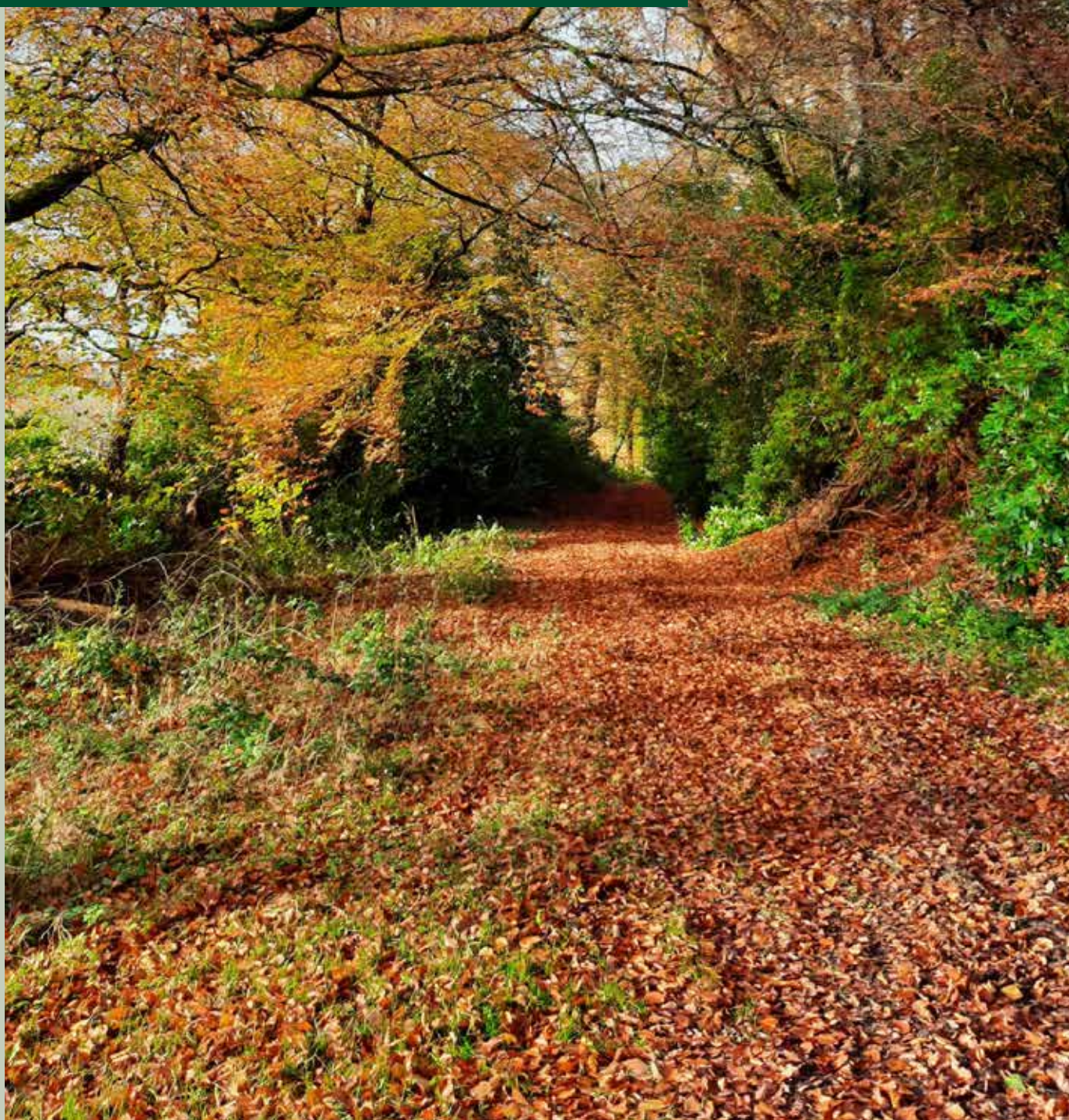
Report to the Department of Rural and Community
Development Provision and Management of
Recreation Facilities and Infrastructure


COILLTE



An Roinn Forbartha
Tuaithe agus Pobail
Department of Rural and
Community Development

Coillte's purpose is to manage the State forests on behalf of the people of Ireland and aims to deliver the multiple benefits of its forests to create a greener future for all.



Introduction

Coillte is the custodian of more than 440,000 hectares of forest and land making it Ireland's largest forest manager. Coillte aims to balance and deliver the multiple benefits of its forests for climate, nature, wood and people. Coillte is the largest provider of outdoor recreation in Ireland with 260 forest recreational areas, twelve forest parks and six mountain bike centres nationwide.

From our Forest Parks to the smallest neighbourhood forest, our property sees an estimated **25m** individual visits annually from local and overseas recreation visitors.

In April 2022, Coillte launched its **New Forestry Strategic Vision** to optimise its contribution to Ireland's Climate Targets. This new forestry strategic vision which aims to deliver multiple benefits from its forests and bring more focus to climate action, setting ambitious new targets on biodiversity and recreation, while continuing to deliver for the forest and wood products industry.

Below is a brief look at Coillte's New Forestry Strategic Vision. As you can see Recreation is a key component in it.

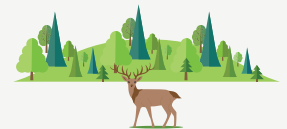
Forests for climate

- Create new forests which will sink more carbon
- Manage our estate to increase carbon storage
- Redesign peatland forests to improve carbon balance
- Generate renewable energy to power homes



Forests for nature

- Increase the area managed primarily for biodiversity
- Enhance and restore existing biodiversity value
- Transform areas of our estate to create new habitats



Forests for wood

- Provide a sustainable supply of certified timber
- Promote the increased use of wood products
- Develop new innovative high-value wood products



Forests for people

- Provide more recreation areas to benefit wellbeing
- Enable world class visitor destinations for tourism
- Create new jobs in rural communities



Strong visitor levels continue today and underline the important role our forests play in supporting peoples' mental and physical wellbeing along with the importance of Coillte continuing to deliver 'Forests for people'.

Access to green-space, woods, forest, hills and water is absolutely vital to the long-term mental and physical health and well-being of the population. The demand for green space was emphasised during the lockdown in 2020, when people sought refuge in the outdoors.

Coillte offers visitors extensive and easy access to outdoor recreation infrastructure from our open access policy, forest roads, way marked trails to our Forest Parks.

In many locations, Coillte provide the platform for businesses to run successfully. These local businesses work hand in hand with Coillte's recreation infrastructure at some of our popular recreation areas. Examples such as bike hire businesses at Ballyhoura (Limerick), Ticknock (Dublin) and Ballinastoe (Wicklow). Cafés have been established at Ards Forest Park (Donegal), Curragh Chase Forest Park (Limerick) and Donadea Forest Park (Kildare) and various other sites across the country.

Coillte also provide access to our lands under permits/license agreements for those operating as outdoor recreation guides and instructors.

Our ongoing management and maintenance of our forests, parks, trails, picnic areas, playgrounds attract a steady stream of visitors thus creating the support needed for these businesses.

The importance of managing and maintaining high-quality, enjoyable and safe access to the outdoors continues to be a priority for Coillte as more and more turn to active outdoor recreation in the future. However, the provision of recreation as a service incurs significant costs to Coillte as the provider, not only in terms of capital costs, but also in the cost of management and maintenance.

Recognising this fact and the important public good that Coillte provides in this area, The Department of Rural Community Development (DRCD) has a strategic partnership in place with a Memorandum of Understanding (MoU) with Coillte. The MoU agrees to provide €3 million each year for the period 2022-2026 to Coillte to enhance recreational facilities on Coillte land. This will provide continued maintenance, future upgrades and enhancements to our much-loved recreational offering and to support increased tourism and economic activity in rural areas.

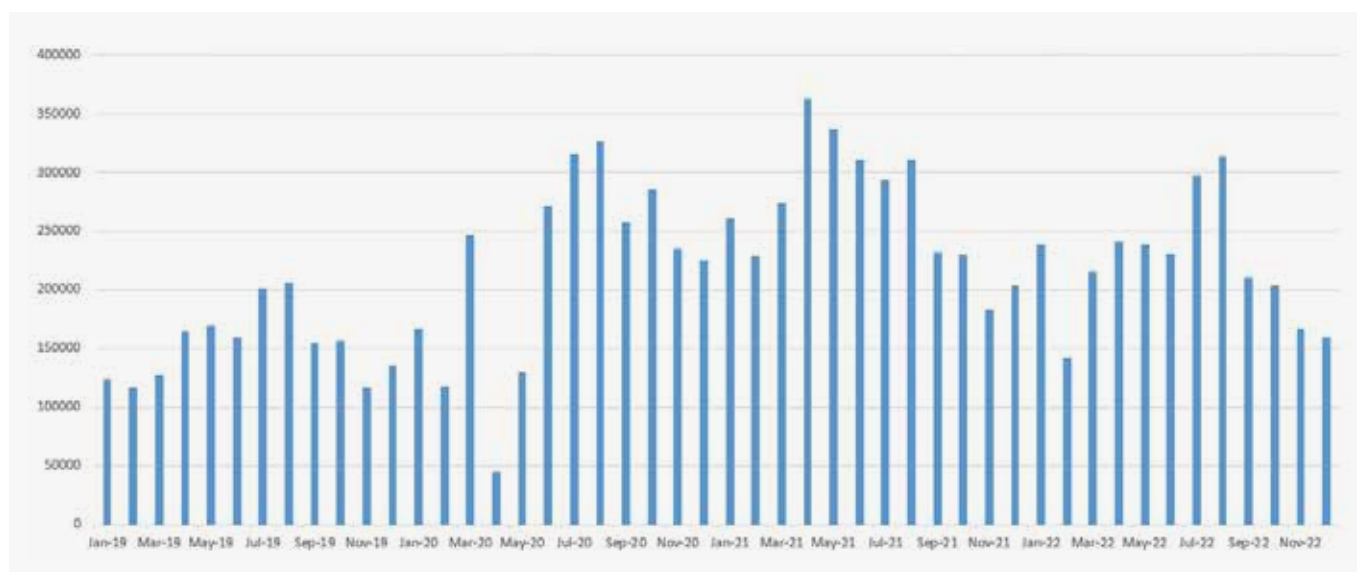
This builds on the previous 5-year agreement which provided funding of €11 million over the period 2017-2021 and supported projects such as:

- **Donadea Forest Park, Co Kildare:** Significant upgrade to entrance and parking area, as well as the provision of toilet units
- **Devil's Glen, Co Wicklow:** Replacement of three footbridges and full upgrade of access route into the car park.
- **Rossmore Forest Park, Co Monaghan:** Upgrade of Existing Toilet Block
- **Cong/Clonbur, Co. Mayo-Co. Galway:** Full upgrade to 4kms of trails behind Cong Abbey; 700m new trail to access viewing point and 500m new trail to facilitate equestrian access to the forest.

This report shows that all work carried out with the support of DRCD in 2022, was done to a high standard and enhanced Coillte's offering to visitors and recreation users, thus providing a valuable service to the public.

Coillte recorded a significant increase in visitor numbers to its Forest Parks and recreation sites over the past two years, with a doubling of visitor numbers at some of its most popular sites. This important strategic partnership will assist Coillte in upgrading facilities to meet the increased demand for access to these amenities.

Visitor Trends 2019 to 2022



Note: This chart shows visitor numbers at 47 selected Coillte sites. It is not a full count, but is a reliable indicator of visitor number growth across the entire Coillte estate from 2019 to 2022.

Note: Visitor numbers have remained high since 2019.

Managing and maintaining high-quality, enjoyable and safe access to our outdoor recreation spaces and forests is very important. Coillte continue to review and address issues that were identified in 2020 and aim to enhance and increase the recreational offering across the estate, with a particular emphasis on community-based forests. Our forests have the ability to absorb significant visitor numbers, however trailhead facilities as mentioned above and access need to be addressed and improved.

Some of those issues were:

- lack of car-parking availability at all sites, not just at the most popular destinations
- a need for improved trail surfaces and facilities to cater for access to outdoor recreation for those with limited ability.
- the need to improve visitor services at many sites including refreshments, information, and other services such as bike hire, etc.

Coillte believes that there is capacity and willingness to close these gaps at our forest sites and recreation areas, if supported to do so in the future. As mentioned above, Coillte have and will continue to partner with many privately-run, small, local businesses to provide a platform for visitor services, however good, safe and enjoyable recreation infrastructure is fundamental to any solid offering to the public.

Our ambition is to work with Department of Rural and Community Development and others to do this over the coming years.

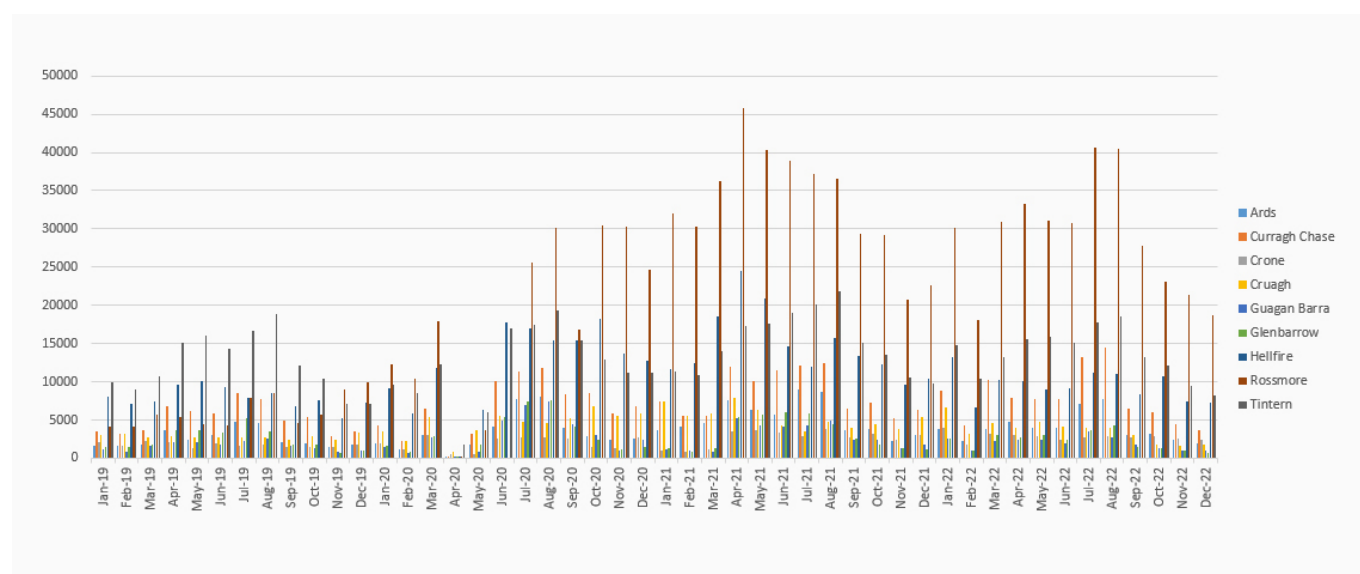
Comparison of Selected Sites from 2019 to 2022

The below charts shows a full count for all visitors at each selected site by year.

	Forest Location	Total Visitors 2019	Total Visitors 2022
1	Ticknock, Co. Dublin	233,038	275,155
2	Rossmore, Co. Monaghan	80,784	346,355
3	Donadea, Co. Kildare	78,900	154,635
4	Tintern Abbey, Co. Wexford	147,255	164,196
5	Ards Forest Park, Co. Donegal	30,896	48,159
6	Hazelwood, Co. Sligo	80,698	81,415
7	Curragh Chase, Co. Limerick	62,135	94,439
8	Mullaghreelan, Co. Kildare	29,276	87,328
9	Guagan Barra, Co. Cork	19,525	31,668
10	Killykeen, Co. Cavan	62,888	87,139

Notes: Nomad Counter uses infra-red heat sensors to measure visitors to the forest.

A Magnetometer (vehicle counter) measures cars and assumes 2.5 people per vehicle.



Note: the continued upward growth in visitor numbers as the country emerged from Covid lockdown and as we ventured further out into our outdoor recreation sites and forests.

Annual recreation maintenance programme – 2022–2026

The annual programme is agreed between Coillte and the Department of Rural and Community Development (DRCD) and up to a maximum of €3m per annum is funded by the DRCD to cover a maximum of 80% of Coillte's total costs.

Under the programme delivered in 2022, the key deliverables were:

- Maintenance and upgrading of National Looped Walks, key local trails, forest parks, picnic areas and off-road cycle trails
- Maintenance and upgrading of the National Waymarked Ways
- Maintenance of recreation infrastructure such as boardwalks, bog-bridges, gates, signage, stiles and waymarking
- The national trails register and maintaining the database in conjunction with Sport Ireland Outdoors
- Providing and maintaining visitor information on social media channels and online via Coillte's website to the public on recreation sites and trails, trail closures, diversions and upgrades

Our programme is consistent with delivering on Comhairle na Tuaithe strategies for improved access to walking and cycling, innovative activities and attractions and improving the availability of recreation infrastructure and facilities in the outdoors. Coillte welcomes the development of Embracing Ireland's Outdoors - National Outdoor Recreation Strategy 2023-2027 which was launched in November 2022. Coillte had a key role in the development of this strategy and will continue to support its implementation it across the estate.

Delivering the annual programme

The work within Coillte's recreation team focusses mainly on the continual improvement of trail infrastructure and recreation sites on the forest estate across the country. This entails assessment of trails each year and preparation of maintenance plans for each trail or site. From the maintenance plans, work packages are prepared, and contract or internal staff are engaged to carry out the works. This is overseen by our forest management staff around the country and checked by the trail managers from the recreation team.

In 2022, maintenance work was carried out on almost 300 recreation sites and long-distance trails. This included maintenance on 20 of the National Waymarked Ways, 5 offroad cycle trail centres, trails and facilities at 12 of Coillte's forest parks and more than 140 other local trails and forest sites across the forest estate. Note that the works carried out to Coillte's main recreation sites and trails are listed later in this report, but many other smaller forest properties are used by local residents on a daily and weekly basis. The works at these sites are generally minor repairs / maintenance and the sites are too numerous to list in this report.

Management of recreation-related issues by recreation staff

The Recreation team cover huge areas, each covering several counties. As well as overseeing Coillte's own recreation programme, the team are regularly approached by local community groups, local development partnerships and County Councils to develop new recreation offering solely on Coillte property or as part of a larger project. Where possible, the team assist these groups in the creation or enhancement of this recreation infrastructure. Coillte have always engaged with local communities and have very positive and successful relationships across the country. Much of the funding for these initiatives is sourced from DRCD through Rural Development Funding/ LEADER programme by community groups and others.

Since the inception of DRCD's Outdoor Recreation Infrastructure Scheme (ORIS), many groups have looked to Coillte as the obvious choice for recreation development. As ORIS funding was granted to these groups, the recreation team in Coillte managed and assisted with delivery of valuable new infrastructure – trails, trail furniture, signage, etc. Valuable resources are brought to the projects from these sources and through working closely with the recreation team in Coillte, many new and improved recreation facilities for the public are delivered. These projects are vital in ensuring that local initiatives from community groups, partnership companies, Rural Recreation Officers and others are facilitated on Coillte lands. Coillte have established a Memorandum of Understanding and licence format to allow community groups to access forest lands for these projects and to drawdown funding under DRCD-funded schemes.



Case Studies

CAPITAL PROJECTS

GLANDUFF, KILBRITTAN, CO. CORK



Upgrade and resurfacing of entrance to Forest Recreation site.

CAPITAL PROJECTS

FARRAN FOREST PARK, COACHFORD, CO. CORK

BEFORE



Full reconstruction of
entrance to Forest Park.

AFTER



CAPITAL PROJECTS

GLANTENNASSIG, CASTLEGREGORY, CO. KERRY



Installation of new access control gate.

CAPITAL PROJECTS

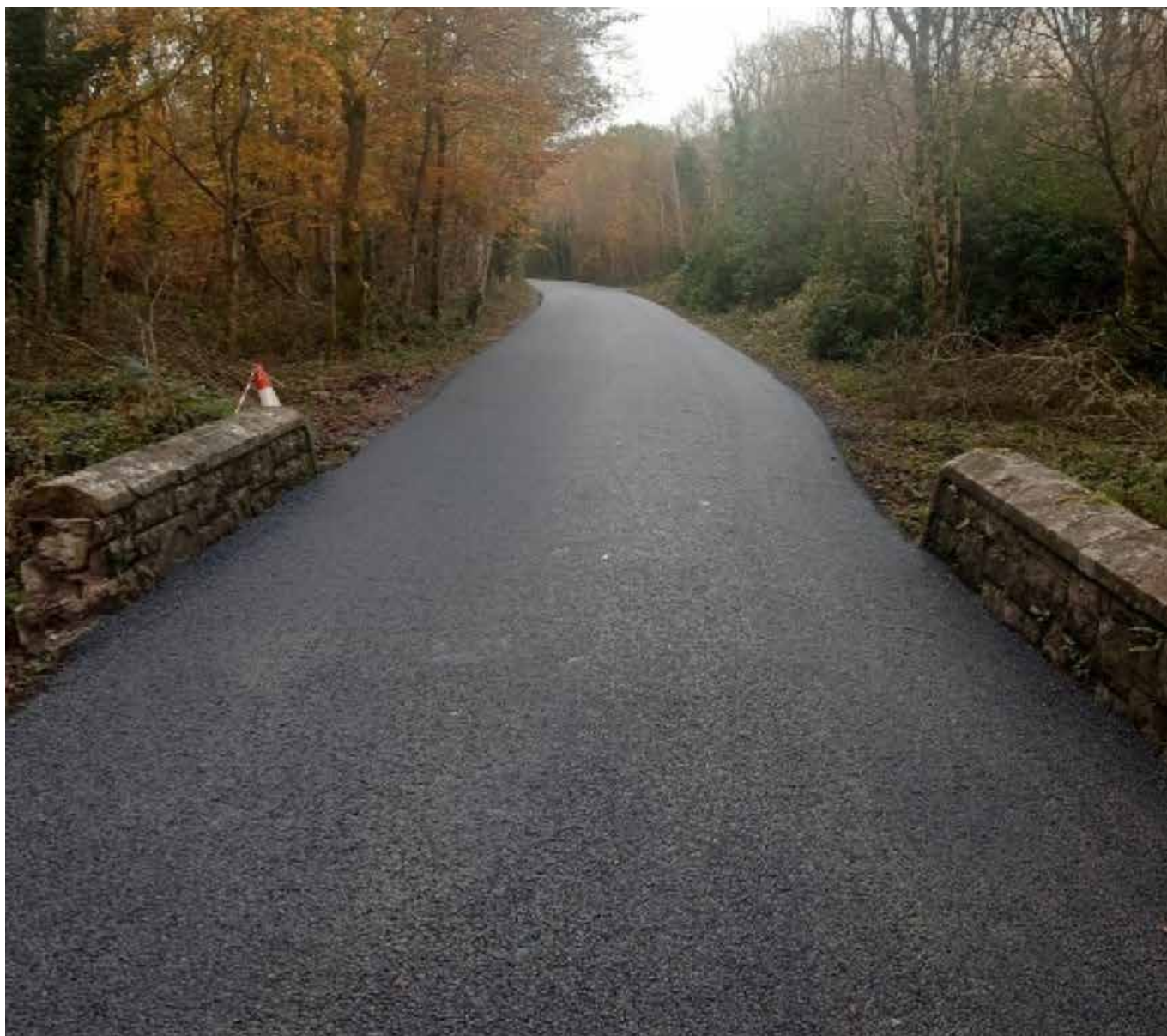
WARRENCOURT, CO. CORK



Upgrade and resurfacing of
entrance to Forest Recreation site.

CAPITAL PROJECTS

LISSADELL, CO. SLIGO (STAGE 2 OF 3/4)



This was the first section of the access route to be completed. The middle section was done last year under capital funding as it was badly damaged. Lissadell is an area of seafront with a beach and a green area alongside a mixed woodland and a maintained trail through this woodland which concludes at a Bird Hyde overlooking an area for bird watching.



CAPITAL PROJECTS

ARDS, CO. DONEGAL (STAGE 2 OF 4)



This was the second section of road in from the entrance to the park to be done. Wonderfully scenic forest park on the shores of Sheep Haven Bay, with an array of activity options, from walking, picnicking, birdwatching and a top class playground which has also been improved in recent years through maintenance funding.

CAPITAL PROJECTS

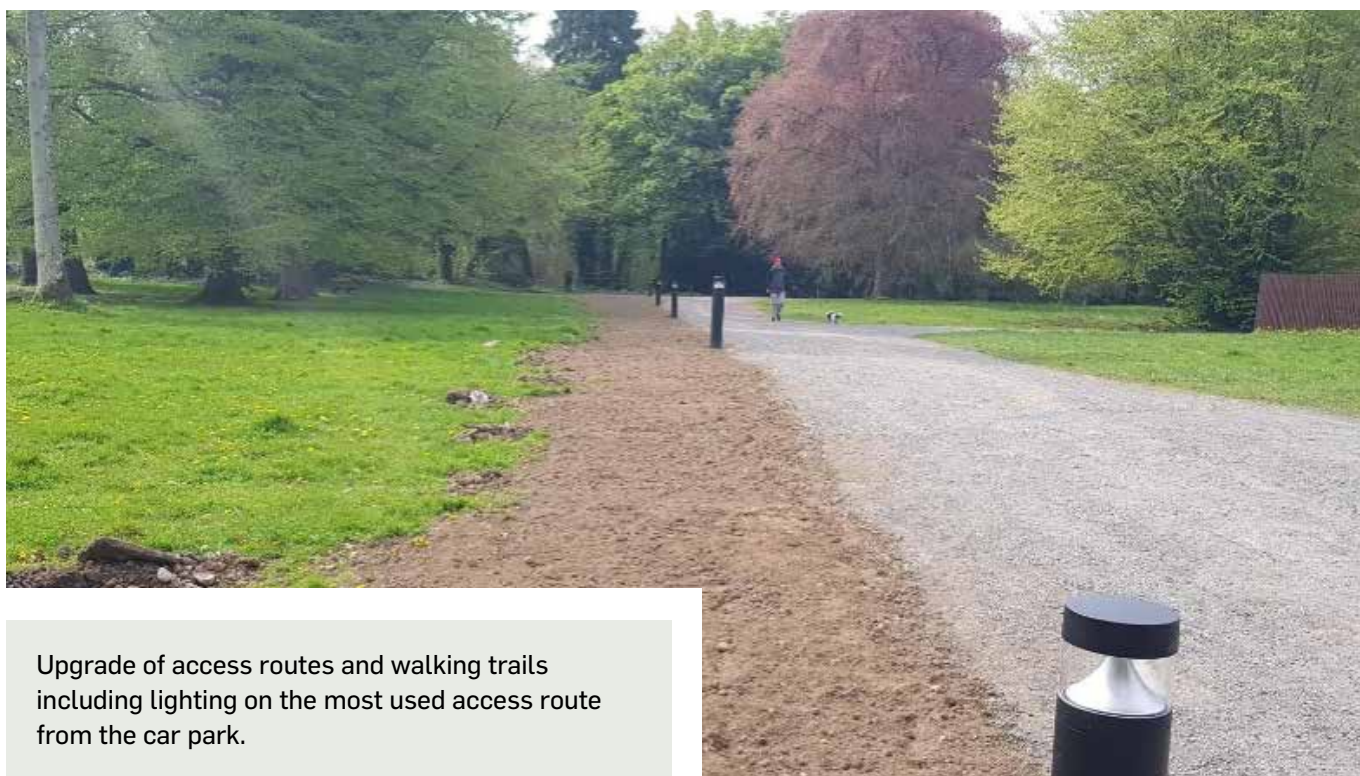
TICKNOCK FOREST, CO. DUBLIN



Ticknock Forest in Co. Dublin is one of Coillte's most popular destinations. The forest recreation area has both walking and mountain biking trails, it is located in the rural area west of Stepside Village and north of Glencullen Village. In 2022 DRCD funding was matched with Dublin Mountains Partnership funding to upgrade a large area of Ticknock carpark and access road, this included resurfacing in excess of 3,900 m², deepening carpark spaces to facilitate bike racks mounted on car boots, line-painting including the marking of two additional accessible carpark spaces and the installation of a pedestrian crossing linking two walking trails. The works have transformed the carpark and the visitor experience. Visit: www.dublinmountains.ie

CAPITAL PROJECTS

DONADEA FOREST PARK, CO. KILDARE



Upgrade of access routes and walking trails including lighting on the most used access route from the car park.

CAPITAL PROJECTS

AVONDALE FOREST PARK, CO. WICKLOW



All trails were re-aligned and upgraded, including a brand-new way marking system.

A new multi access route was developed and surfaced allowing it to be used by wheelchairs also accommodating age friendly users, with multiple seating areas on the 800m route.

Sections of the river walk were also upgraded including a new foot bridge and secure railing along a steep drop off down to the river.

MAINTENANCE PROJECT CASTLEFREKE, RATHBARRY, CO. CORK



As part of a collaborative project with the local community group, Clonakilty Area Sports Group, West Cork Development Partnership and Cork County Council, Coillte carried out some trail upgrades, installed a new footbridge and created a new trail in the main carpark.

MAINTENANCE PROJECT KILLINTHOMAS, CO. KILDARE



A popular recreation and nature site in Kildare, trails throughout the property were upgraded and re-surfaced.

MAINTENANCE PROJECT DERRYCARNE, CO. LEITRIM



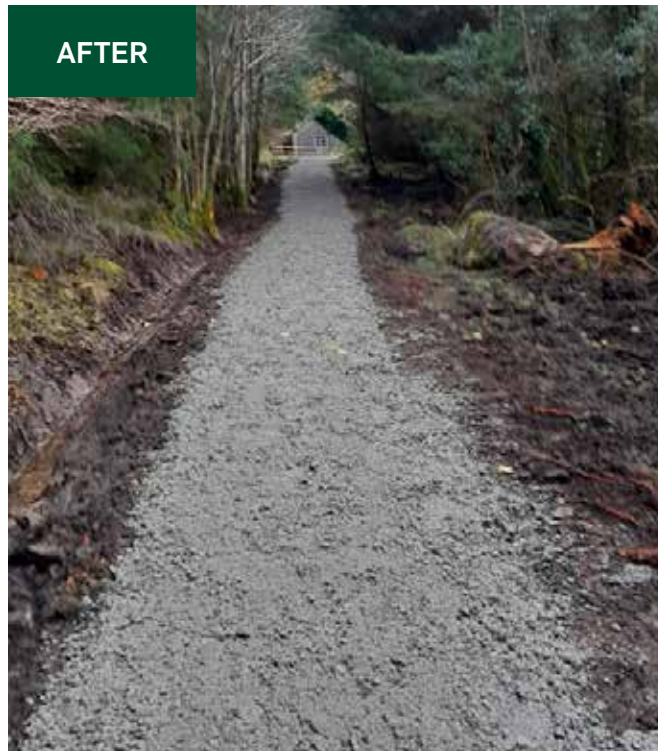
In conjunction with Leitrim County Council who had an ORIS project in Derrycarne to upgrade the trails, Coillte added to the project and got new signs and picnic units made to enhance the project.

MAINTENANCE PROJECT KILTYCLOGHER, CO. LEITRIM

BEFORE



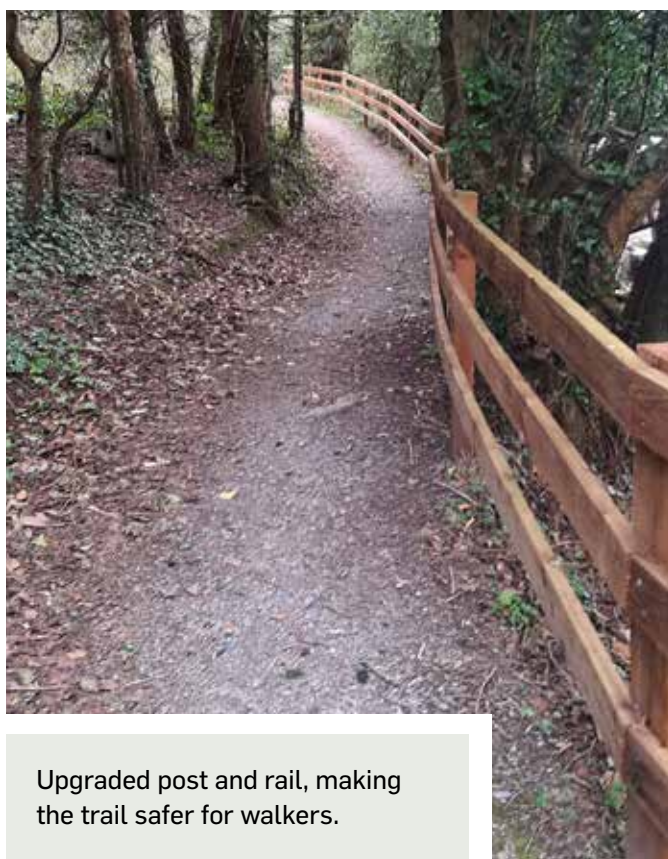
AFTER



In partnership with the local community group and the RRO Bryan Fennell, a section of the Leitrim Way and a local access route was upgraded and resurfaced.

MAINTENANCE PROJECT

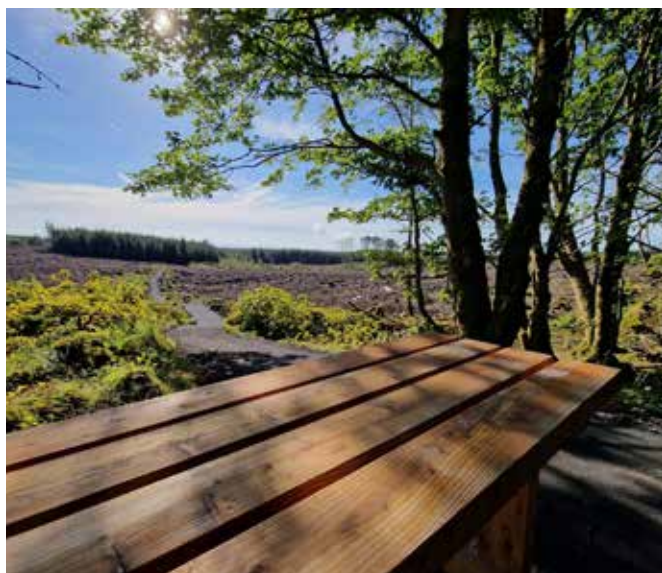
RINEEN, SKIBBEREEN, CO. CORK



Upgraded post and rail, making the trail safer for walkers.



MAINTENANCE PROJECT BLANEMORE, CO. MAYO



Trails were changed from boardwalk to gravel, replacement seats and Decking (viewing point) beside the lake. Maintenance money delivered a significant upgrade to an already popular north Mayo recreation site to benefit the communities of Moygownagh, Crossmollina and Ballycastle to name a couple. It is an area steeped in history and home to many examples of archaeology going back c6000yrs, these trail upgrades have increased the recreation value of this location making it an excellent place to walk or wheel over 5kms of trail.

MAINTENANCE PROJECT

DERROURA MTB TRAILS, CO. GALWAY



Trail maintenance in Derrouora MTB trails concentrated on highest priority points to improve rider safety and more works are planned to help Derrouora realise its potential alongside more recently constructed trail centres.

MAINTENANCE PROJECT BELLEEK, CO. MAYO



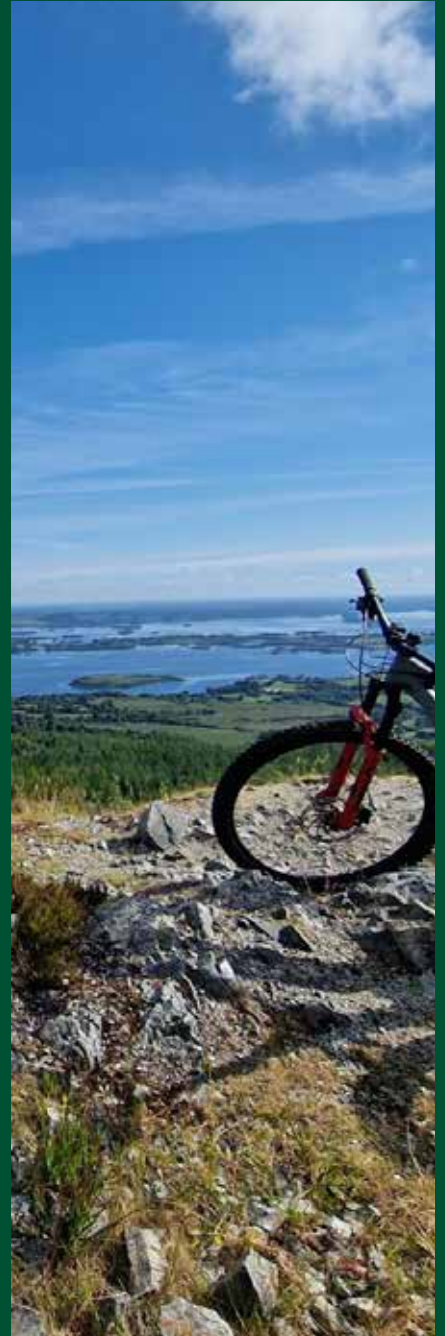
DRCD maintenance moneys provided a much needed improvement to the parking facilities in Belleek at the touch point of the new Ballina to Killala greenway, this co-ordination of works with our partners in the Mayo County Council show what great outcomes can be achieved through collaboration with communities and local authorities.

MAINTENANCE PROJECT TOURMAKEADY, CO. MAYO



Play areas were revitalised and shelters and outdoor classroom installed.





Appendix

Appendix 1 – Sites maintained with DRCD funding contribution in 2022

County	Site/trail Name	Nearest Town	Works Undertaken
All	Signage design and supply	Various	For replacement, additional and new signage requirements.
All	Visitor counters	Various	Continued data collection using visitor counters at 47 sites.
All	Website/ Mapping	Various	Website upgrade and mapping surveys.
Cavan	Bailieboro	Bailieboro	General maintenance. Painting of barriers, dogs on leads signage, etc.
Cavan	Bawnboy	Bawnboy	General maintenance. Paint markers and new map board.
Cavan	Burren	Blacklion	General maintenance. New locks and tree surgery near entrance to car park.
Cavan	Deerpark	Virginia	General maintenance. Removal of vegetation on road. Replaced old markers. Clean and repaired tables.
Cavan	Dun an Ri Forest Park	Kingscourt	General maintenance. Map boards signs for car park. Riverbank restoration work to protect trails on riverbank.
Cavan	Killykeen Forest Park	Killykeen	Creation of a link trail 40m from new map boards to cycle trail to Killeshandra, installed two dismount gates on slope down to bridge. Maintenance of trails, new signage including new maps/ mapping boards/ marker posts.
Clare	Ballycuggaran	Killaloe	General maintenance, large repair to washed out trail sections, dangerous trees removal, blowing leaves etc.
Clare	East Clare Way (Knocknageeha)		General maintenance, path repair and removal of windblown trees.
Clare	Gragans Wood	Ballyvaughan	General maintenance.
Clare	Kilrush	Kilrush	General maintenance, removal of windblown trees, blowing leaves etc.

Appendix 1 – Sites maintained with DRCD funding contribution in 2022

County	Site/trail Name	Nearest Town	Works Undertaken
Clare	Mountainpark	Woodford	General maintenance, removal of windblown trees, blowing leaves etc.
Cork	Ardarou	Glenville	General maintenance.
Cork	Ballard	Kilworth	General maintenance.
Cork	Ballyannan	Midleton	General maintenance.
Cork	Castleblagh	Ballyhooley	General maintenance.
Cork	Castlemartyr	Castlemartyr	General maintenance.
Cork	Corrin	Fermoy	General maintenance. Upgrade to back forest road post harvesting.
Cork	Curragh	Midleton	General maintenance.
Cork	Glansheskin	Kilworth	General maintenance.
Cork	Glenabo	Fermoy	General maintenance, hedge cutting.
Cork	Glenanair	Ardpatrick	General maintenance, windblow.
Cork	Glenbower/ Killeagh	Killeagh	General maintenance.
Cork	Kilquane	Knockraha	General maintenance.
Cork	Marlogue	Cobh (Great Is)	General maintenance.

Appendix 1 – Sites maintained with DRCD funding contribution in 2022

County	Site/trail Name	Nearest Town	Works Undertaken
Cork	Moanbaun/ Main Block	Watergrasshill	General maintenance.
Cork	Rostellan	Aghada	General maintenance.
Cork	Beara Way	Teernahillane, Castletownbere	Trail remedial work. New drainage cut into ground to divert water off track.
Cork	Carrigfadda	Rosscarbery	Maintenance.
Cork	Castlefreke	Rathbarry	Maintenance including hedge cutting, tree surgery.
Cork	Curraghbinny	Carrigaline	General maintenance. Tree surgery, hedge cutting maintenance and invasive species control.
Cork	Dromillihy	Leap	General maintenance. New threshold.
Cork	Dromkeen	Inishannon	General maintenance, hedge cutting, invasive species control tree surgery and trail upgrade.
Cork	Dunboy	Castletownbere	Maintenance works.
Cork	Farran Forest Park	Coachford	General maintenance, hedge cutting, tree surgery, deer enclosure replacement and paint playground (new entrance works on Capex sheet).
Cork	Garrettstown	Garrettstown	General maintenance and hedge cutting.
Cork	Glanduff/ Kilbrittain	Kilbrittain	General maintenance, hedge cutting. New threshold and path upgrade.
Cork	Guagán Barra Forest Park	Ballingeary	General maintenance and hedge cutting. Trail, car park and toilet block maintenance.
Cork	Island Wood	Newmarket	General maintenance. New bollards around trail head.

Appendix 1 – Sites maintained with DRCD funding contribution in 2022

County	Site/trail Name	Nearest Town	Works Undertaken
Cork	Oldcourt	Rochestown, Cork city	Maintenance and monitoring of anti-social behaviour.
Cork	Pooleen	Glengarriff	Maintenance and upgrade trail from car park.
Cork	Rineen	Union Hall	General maintenance. New handrail, trail repairs.
Cork	Warrencourt	Macroom	Maintenance, install new signs, hedge cutting.
Donegal	Ards Forest Park	Dunfanaghy	General maintenance. Path repair, bridge repair and new picnic benches.
Donegal	Ballykeeran	Kilmacrennan	General maintenance. Drainage and path repairs/ resurfacing.
Donegal	Bonny Glen/ Clooney Wood	Portnoo	General maintenance. Resurfacing of path along Lough Namanagh (adjacent to Clooney Wood which is a large Neighbourwood Scheme).
Donegal	Church Hill	Letterkenny	General maintenance. Strimming and some drainage repairs.
Donegal	Corravaddy	Letterkenny	General maintenance and path repairs.
Donegal	Drumboe	Stranorlar	General maintenance. Path maintenance and replacement of timber railings.
Donegal	Drumharriff	Pettigo	General maintenance. Resurface remaining sections of paths. Some drainage works and erect timber railings at car park side.
Donegal	Drumonaghan (Ballyair)	Ramelton	General maintenance. Minor drainage works.
Donegal	Knader	Ballyshannon	General maintenance. Hedge cutting and rhododendron cutting along the paths and roadways.
Donegal	Lough Eske/ Rossylongan	Donegal	General maintenance. Path maintenance, extend car park and remove rhododendron from paths.

Appendix 1 – Sites maintained with DRCD funding contribution in 2022

County	Site/trail Name	Nearest Town	Works Undertaken
Donegal	Monellan	Killygordon	General maintenance. Path repairs and drainage. Hedge cutting and invasive species control.
Donegal	Mullaghagarry	Ballybofey	General maintenance. Hedge cutting and strimming along path edges.
Donegal	Murvagh	Donegal	General maintenance. Tree surgery works along paths required
Donegal	Pilgrim path (Lough Derg)	Pettigo	General maintenance. Potholes filled on forest road section and drainage on sections of the pathways.
Donegal	Woodquarter	Milford	General maintenance. Minor drainage upgrades.
Dublin	Hell Fire	Old Bawn	General maintenance. Dog fence at Hellfire.
Galway	Aghrane	Ballygar	General maintenance and removal of windblown trees.
Galway	Ardnageeha	Cong	General maintenance, tree surgery, blowing leaves etc.
Galway	Castlegrove	Tuam/ Kilconly	General maintenance.
Galway	Cong	Cong	General maintenance, dangerous trees, blowing leaves etc.
Galway	Derroura	Maam Cross	General maintenance and trail repair on the back loop.
Galway	Inchagoill Island	Cong/ Oughterard	General maintenance, path repair and removal of windblown trees.
Galway	Portumna Forest Park	Portumna	General maintenance, path, carpark and wall repair and removal of windblown trees.
Galway	Roscahill	Roscahill	General maintenance.

Appendix 1 – Sites maintained with DRCD funding contribution in 2022

County	Site/trail Name	Nearest Town	Works Undertaken
Galway	Rosturra	Woodford	General maintenance, path repair and removal of windblown.
Galway	Woodlawn	Woodlawn	Maintenance and tree surgery.
Kerry	Ballygamboon	Tralee	General maintenance, strimming, check picnic tables.
Kerry	Caragh Lake	Killorglin	Trail and car park maintenance, windblown trees, car park maintenance, water damage/repair. Road repairs Killaclohane.
Kerry	Glannageenty	Castleisland	General maintenance. Cleared windblown trees from trail.
Kerry	Glanteenassig	Castlegregory	General maintenance. Bog bridge maintenance (post and rail), forest road repairs.
Kerry	Kimego	Caherciveen	General maintenance, car park works.
Kerry	Lyracrumpane	Listowel	General maintenance, trail repair.
Kerry	Pike Wood	Killarney	General maintenance to benches, trail and grass cutting. Remove windblow trees.
Kerry	Rossacroo	Kilgarvan	General maintenance of trail.
Kildare	Donadea Forest Park	Prosperous	Ongoing maintenance and management. Major dangerous tree felling around all trails and lake edges where public congregate.
Kildare	Killinthomas	Rathangan	General site maintenance. Major work carried out in the carpark to improve surface.
Kilkenny	Castlemorris	Kilkenny	Repair of the pathways and surface some of the wetter area. Cutting and maintenance of the hanging laurels along part of the trail.
Kilkenny	Coill an Fhaltaigh/Woodlands	Kilkenny	General site maintenance.

Appendix 1 – Sites maintained with DRCD funding contribution in 2022

County	Site/trail Name	Nearest Town	Works Undertaken
Kilkenny	Jeninstown & Ballyrafton	Kilkenny	General maintenance. Re-surfacing of the Car Park and replacement of all the picnic tables. Toilet refurbishment in CapEx sheet.
Laois	Slieve Bloom Way	Rosenallis	Way markers and signage updated/replaced.
Leitrim	Derrynahimmirk/ Fowleys Falls	Kiltyclogher	General maintenance, path repair and removal of windblown trees.
Leitrim	Glencar Waterfall	Sligo	General maintenance. Windblown trees.
Leitrim	Derrycarne	Carrick-on-Shannon	Ongoing maintenance, grass cutting, road cleaning etc.
Leitrim	Glenfarne	Glenfarne	General maintenance.
Leitrim	Leitrim Way	Dergvone	Upgrade to a section of trail in conjunction with the local community and the RRO. Tree surgery and opening of water courses.
Leitrim	Scardan waterfall	Drumkeeran	General Maintenance, grass cutting and necessary repairs to boardwalk.
Limerick	Ballyhoura (incl MTB)	Ardpatrick	General maintenance and trail upgrade.
Limerick	Galty Castle	Kilbehenny	General maintenance, replaced signage.
Limerick	Glenstal	Murroe	General maintenance.
Limerick	Curragh Chase Forest Park	Kildimo	General maintenance, grass cutting, drainage around swings, invasive species control, tree surgery and repairs to campgrounds.
Limerick	Foynes	Foynes	General maintenance, car park and trail maintenance.
Limerick	Liskennett (new)	Croom	Repair to signage, barrier. Trails repair after storm damage.

Appendix 1 – Sites maintained with DRCD funding contribution in 2022

County	Site/trail Name	Nearest Town	Works Undertaken
Longford	Derrycassan	Granard	General maintenance. Windblown trees, storm tidy up, repairing trails etc
Longford	Gowna/ Mulrick	Gowna	General maintenance. Windblown trees, storm tidy up and repairing trails.
Longford	Newcastle	Ballymahon	General maintenance. Windblown trees, storm tidy up, repairing trails.
Longford	Rathcline	Lanesboro	General maintenance. Windblown trees, storm tidy up, repairing trails
Louth	Carlingford/Sliabh Foye	Carlingford	General maintenance. Paint picnic tables, install BBQ grids on tables, painting of barriers, additional signage for walk reroute. Replace interpretive sign for Carlingford lough landscape 30+ years old Forest service logo. Repairs to tarmac surface on road.
Louth	Ravensdale	Ravensdale	General maintenance. Paint picnic tables install BBQ grids, repairs to trails after MTB activities.
Louth	Townley Hall	Tullyallen	Marker posts to be painted/replaced where required, repairs to trails after MTB activities. Painting of barriers. New entrance works listed on CapEx sheet.
Mayo	Belleek wood	Ballina	General maintenance. Improvement to the parking facilities at a new junction on the Ballina to Killala greenway. Collaboration with local communities and Mayo CoCo.
Mayo	Blanemore/ Tawnywaddyduff	Moygownagh	General maintenance. Trails were changed from bog bridge to gravel, replacement seats and decking (viewing point) beside the lake.
Mayo	Brackloon wood	Westport	General maintenance. No parking signage and directional signage.
Mayo	Castlemagarrett (Claremorris)	Claremorris	General maintenance. New seats and invasive species control.
Mayo	Clydagh Bridge	Castlebar	General maintenance.
Mayo	Drummin	Foxford	General maintenance and strimming of paths.

Appendix 1 – Sites maintained with DRCD funding contribution in 2022

County	Site/trail Name	Nearest Town	Works Undertaken
Mayo	Knockranny (Westport)	Westport	General maintenance. Support work to neighbourwood project.
Mayo	Moorehall	Ballintubber	General maintenance.
Mayo	Raheens	Castlebar	General maintenance.
Mayo	Sheskin		Ballycastle to Bellacorrick: Boardwalk repair, drainage, signage, markers, monitoring and removal of illegal dumping and tree surgery.
Mayo	Teevenish / Knockranny		Waymarked trail impassable due to flooded section.
Mayo	Tourmakeady	Tourmakeady	General maintenance. Invasive species control. Play areas were revitalised and shelters and outdoor classroom installed.
Meath	Summerhill	Summerhill	Trail maintenance and new signage. Replaced carpark railings.
Monaghan	Black Island	Castleblaney	General maintenance. Clean vegetation from narrower sections of trail, spread stone on this area. Spread stone on other areas where required also in combination with drainage maintenance.
Monaghan	Rossmore Forest Park	Monaghan	General maintenance. Replace fence with barbed wire to plain wire near twin lakes on new cycle route. Pruning of Oak trees to allow cyclist use routes.
Offaly	Castletown (Kinnitty)	Kinnitty	General maintenance. Tree surgery, strimming of paths and pruning of high branches.
Roscommon	Correen	Ballinasloe	General maintenance.
Roscommon	Derryvunny	Carrigeenroe	General maintenance. Tree surgery along walkway.
Roscommon	Lough Key Forest Park	Boyle	General maintenance. Path upgrades and repairs to fairy bridge.

Appendix 1 – Sites maintained with DRCD funding contribution in 2022

County	Site/trail Name	Nearest Town	Works Undertaken
Roscommon	Miners' way/Historical trail	Arigna	General maintenance and tree surgery.
Roscommon	Mote Park	Roscommon	General maintenance and tree surgery.
Sligo	Glen Wood	Coolaney	General maintenance. Path repairs, carpark maintenance and grass strimming.
Sligo	Gortarowey	Sligo	General maintenance. Path repairs due to flooding and removal of windblown trees.
Sligo	Hazelwood	Sligo	General maintenance. Path repairs, windblown trees and seats replaced.
Sligo	Lissadell	Sligo	General maintenance. Grass strimming, full maintenance, repainting benches, etc..
Sligo	Rathcarrick	Strandhill	General maintenance. Path repairs, step repairs and removal of windblown trees.
Sligo	Rathscanlon	Tubbercurry	General maintenance.
Tipperary	Bansha Woods	Bansha	General maintenance.
Tipperary	Bishops Wood/ Gortarush	Dundrum	General maintenance.
Tipperary	Devils Bit trail	Borrisoleigh	General maintenance.
Tipperary	Doonane/Ballyhourigan	Killoscully	General maintenance.
Tipperary	Glengarra	Mitchelstown	General maintenance.
Tipperary	Gortavoher/ Ardloman	Glen of Aherlow	Maintenance of car park surface.

Appendix 1 – Sites maintained with DRCD funding contribution in 2022

County	Site/trail Name	Nearest Town	Works Undertaken
Tipperary	Greenfield	Cappawhite	General maintenance and removal of wind blown trees.
Tipperary	Killballyboy	Cappamore	General maintenance, leave blowing and tree surgery.
Tipperary	Marl Bog	Dundrum	General maintenance, water issues repaired and bridge repair.
Tipperary	Slieve Felim Way	Rearcross	Upgrade works on the Rearcross side, gravel on the entrance where some walkers park and a rock amour. Drainage work along the route following harvesting operations.
Tipperary	Sopwell	CloghJordan	General maintenance.
Waterford	Carey's Castle	Clonmel	General maintenance. Bollards to prevent scramblers accessing site.
Waterford	Colligan	Dungarvan	General maintenance, check hedge cutting, strimming.
Waterford	Dromana	Villierstown	General maintenance.
Waterford	Glenshelane	Cappoquin	General maintenance to trails and car park. Removal of wind blown trees.
Waterford	Kilclooney	Rathcormack	General maintenance.
Waterford	Marlfield	Clonmel	General maintenance, tree surgery.
Westmeath	Ballinafid (Kilpatrick)	Mullingar	Complete trail upgrade to include NIS recommendations. Installed waymark signs.
Westmeath	Carn Park (Westmeath Way)	Athlone	General maintenance. Install new boardwalk and platform.
Westmeath	Moydrum	Athlone	Trail maintenance and treatment of furniture and railings.

Appendix 1 – Sites maintained with DRCD funding contribution in 2022

County	Site/trail Name	Nearest Town	Works Undertaken
Westmeath	Mullaghmeen	Oldcastle	General maintenance. Roads and trails upgraded. Arboretum area upgraded.
Wexford	Bree Hill	Enniscorthy	General maintenance. Upgrade carpark.
Wexford	Camolin Park	Enniscorthy	General maintenance. Upgrade existing trail and built new trail to create a loop in Camolin Park.
Wexford	Carrickbyrne	New Ross	General site maintenance. Trail work.
Wexford	Coolmelagh	Bunclody	Hedge-cutting; trail maintenance.
Wexford	Courtown	Gorey	General site maintenance.
Wexford	Dunanore		Supply machine, materials, and bollards to upgrade the car park in Dunanore; some dangerous trees removed.
Wexford	Oaklands	New Ross	General site maintenance.
Wexford	Tara Hill	Gorey	General site maintenance.
Wexford	Tintern	New Ross	General maintenance. Lining of the Car park. 39 parking spaces including 2 disabled spaces. Installation and supply of kerbing along the edge of the car park by the road leading to the Abbey. Trail maintenance.
Wexford	Park Wood		Upgrade walking trail.
Wicklow	Avondale Forest Park	Rathdrum	Ongoing maintenance works in the wider park, dangerous trees felled and rear entrance repaired at back of site.
Wicklow	Ballinastoe MTB	Roundwood	General maintenance. Remedial works at carpark

Appendix 1 – Sites maintained with DRCD funding contribution in 2022

County	Site/trail Name	Nearest Town	Works Undertaken
Wicklow	Djouce (Deerpark)	Roundwood	General maintenance.
Wicklow	Glendalough/ Ballard		Trail repair works on the upper lake trail.
Wicklow	Kindlestown	Greystones	General site maintenance.
Wicklow	Wicklow Way	Various	Stump of the Castle trail repairs, Devils glen works, Tinakilly trail maintenance and Ballard dog fence.

For more information about Coillte,
please contact us at:

Coillte,
Dublin Road,
Newtownmountkennedy,
Co. Wicklow,
A63 DN25.

Tel: 1890 367 378
Email: info@coillte.ie
www.coillte.ie



An Roinn Forbartha
Tuaithe agus Pobail
Department of Rural and
Community Development