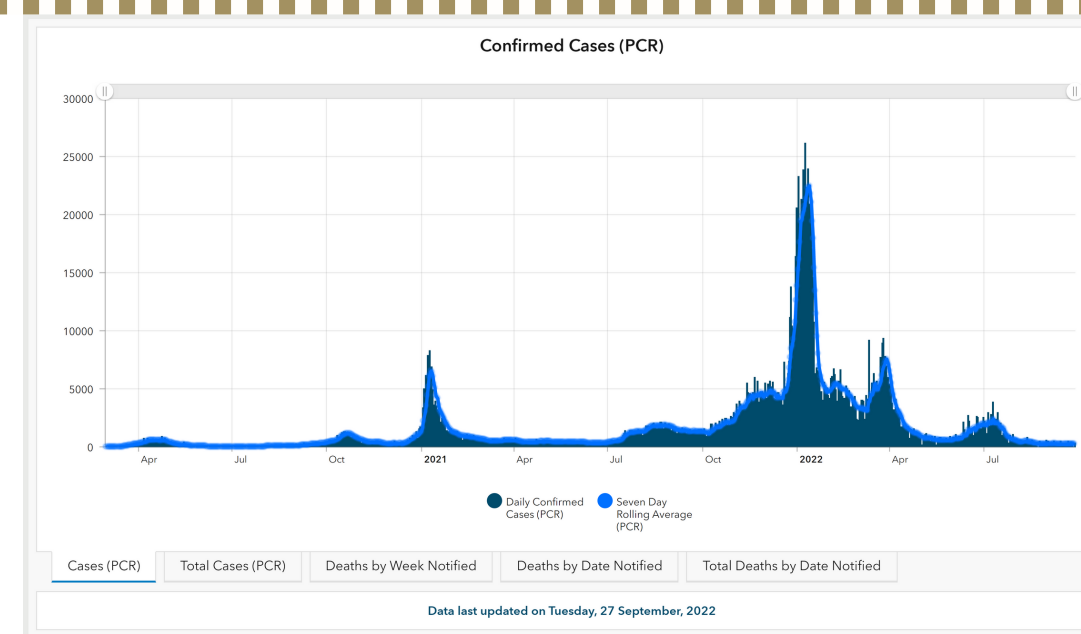


- **Winner: 'Public Sector Analytics Project of the Year', Analytics Institute Awards 2022**
- **Winner: Esri 'Special Achievement in GIS Award' August 2021**
- **Finalist: Civil Service Excellence & Innovation Awards 2021**



Objectives

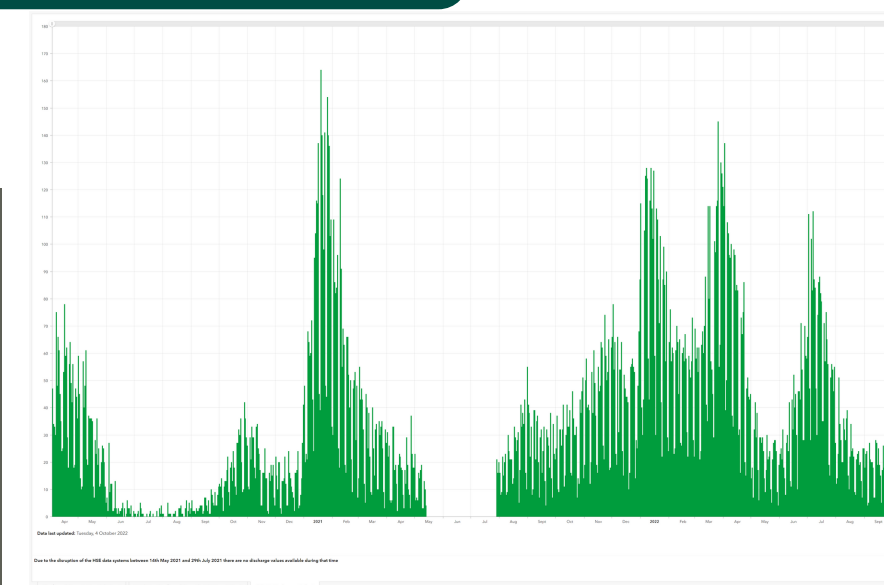
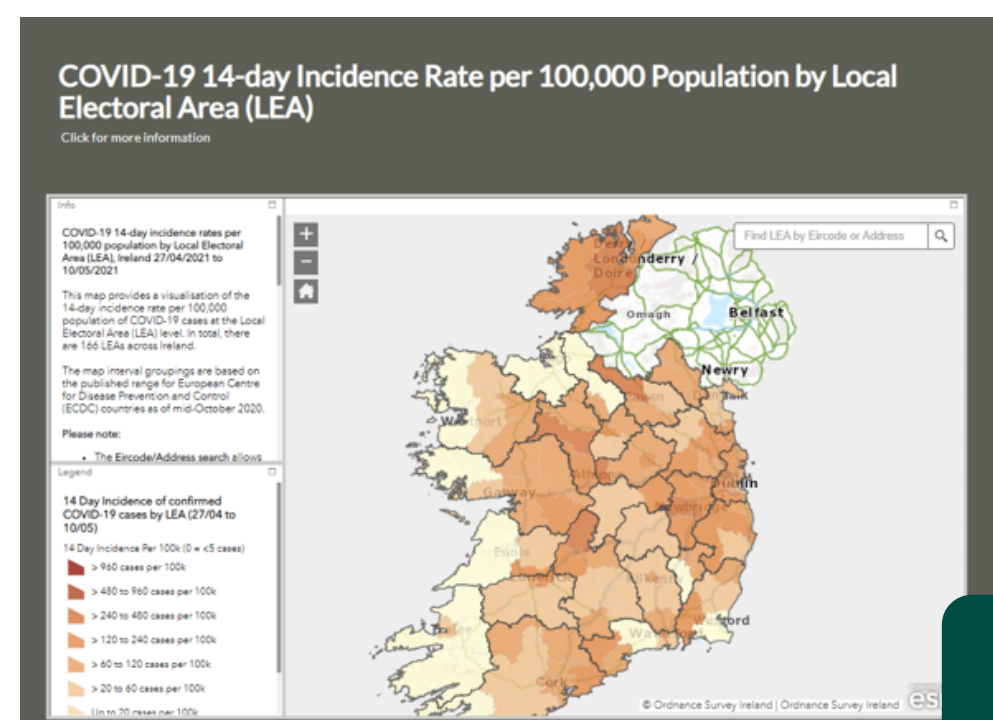
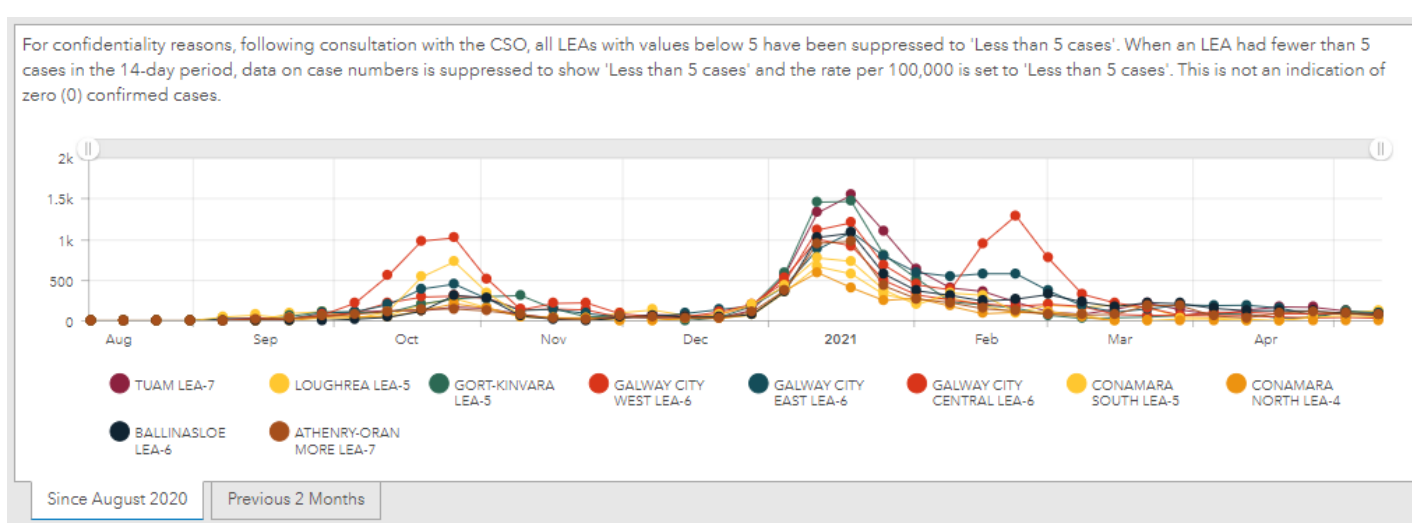
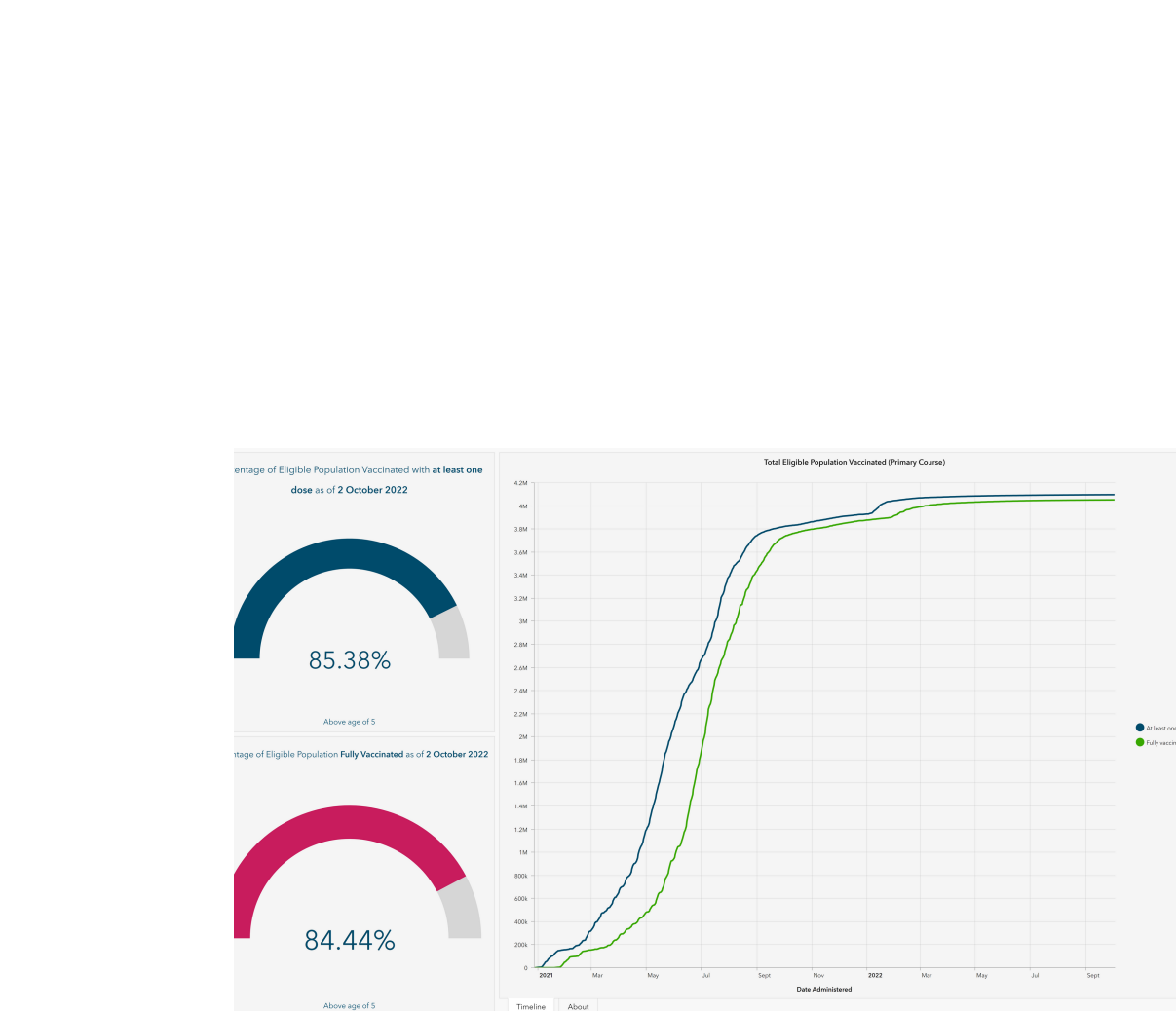
- **Trusted & accessible** source of regularly updated COVID-19 data
- All data available as **open data**
- Minimise burden on **data providers**

Collaboration & Governance

- GeoHive COVID-19 Response Coordination Group leveraged existing GeoHive spatial platform (ArcGIS) used for reporting Sustainable Development Goals
- **Ireland' COVID-19 Data Hub launched 18 March 2020, fully public hub in June 2020**
- Collaboration between DOH, OSi, CSO HPSC, HSE, HIU, AIRO
- COVID-19 Data Coordination Group coordinates activities of public service bodies collecting & disseminating COVID-19 data & oversees the Data Hub

First Phase

- **Confirmed COVID-19 Cases & Deaths** (HPSC/DOH) - Pre-existing CIDR system
- **Daily COVID-19 number in acute hospitals** (HSE) - New data system
- **COVID-19 cases in ICU** (NOCA, ICU-BIS) - New data system
- **Lab testing** (Deloitte/HSE/HPSC) - New data system

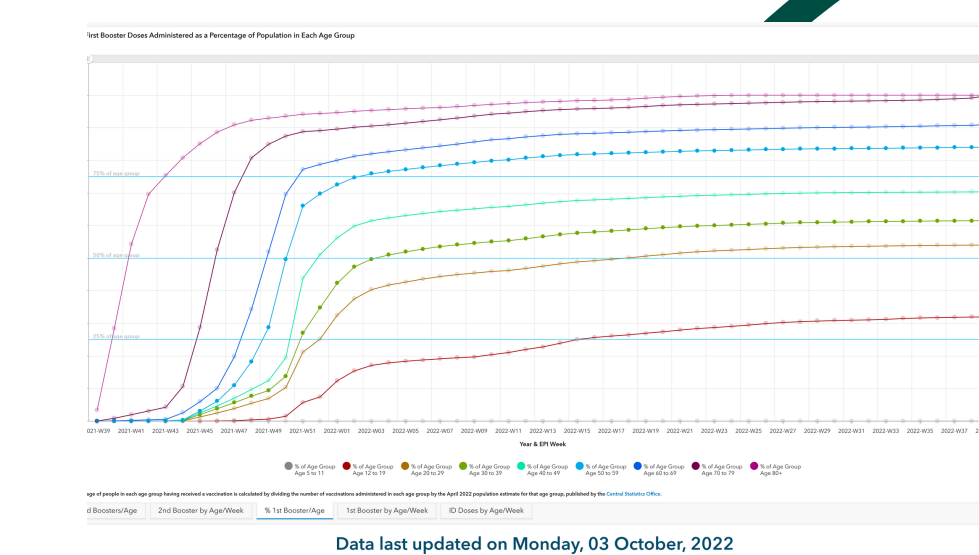


Hub Expansion

- August 2020: **Local Electoral Area map** (HPSC/HIU/CSO/AIRO) - Geocoded cases from CIDR
- January 2021: **Vaccination data** (Covaxx/DOH) - New data system
- January 2022: **Positive Antigen Results** (HSE/DOH) - New data system

Latest Developments

- Data on **Booster Vaccinations** in line with policy changes
- Reduced frequency of reporting
- Local Electoral Area data no longer updated



COVID-19 Cases Data

Where is data on confirmed COVID-19 cases sourced?

What does Registered Positive Antigen mean?

COVID-19 Deaths Data

How is a COVID-19 death defined?

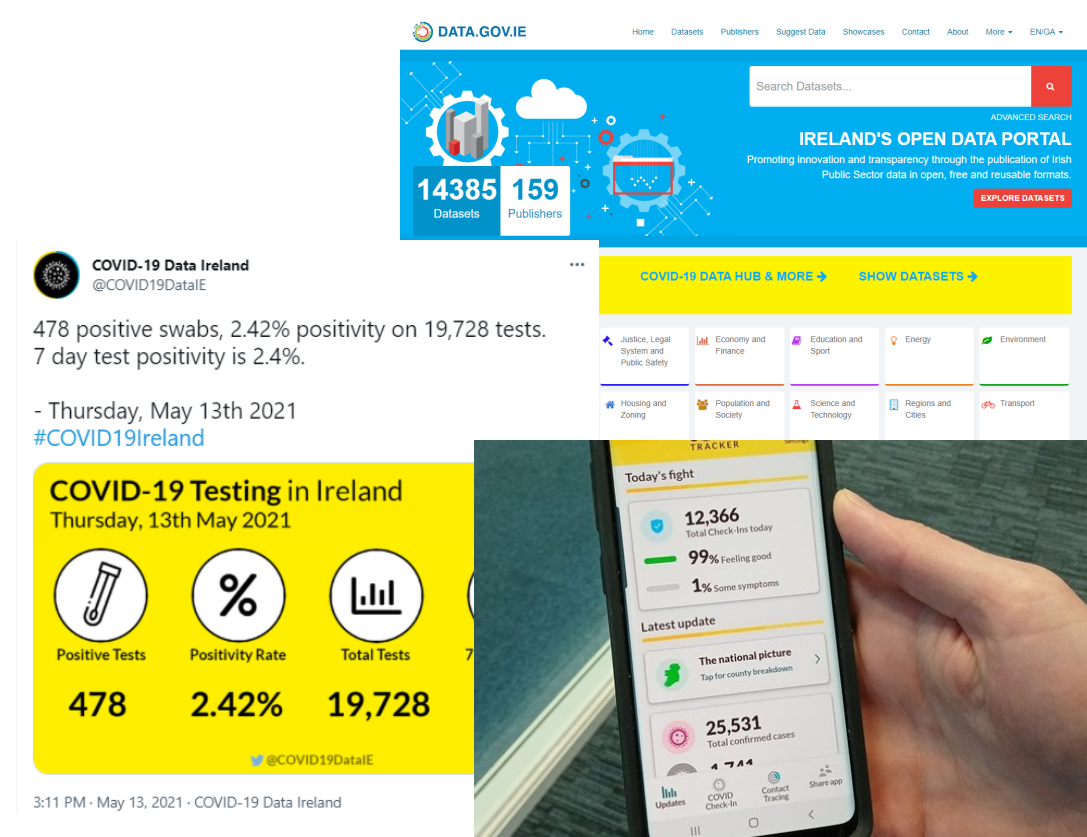
How is surveillance data on COVID-19 deaths collected?

How is death data reported on the COVID-19 Data Hub?

Why might surveillance data on COVID-19 deaths reported by HPSC differ from CSO Vital Statistics on deaths?

Open Data

- **All data** available as open data
- FAQ section offers **methodology & metadata**
- **Key users** e.g. HSE COVID-19 Tracker App; Our World in Data; Johns Hopkins; WHO; Media; Citizen data scientists ...



Lessons Learned

- **Lack of common unique patient identifier** across data systems was a challenge
- **Intense public & political scrutiny** required very clear metadata & messaging on complexity behind data
- Capacity of **long established data systems** to meet new data needs
- Creation of **new data systems** has had long term benefits e.g. Covax
- Easy access to high quality, timely & understandable COVID-19 data & visualisations helped **build awareness among citizens** of rationale behind public health interventions
- Learnings **for other national data hubs** e.g. data on Ukrainian refugees & input to **international reviews of dashboards** e.g. WHO European Region