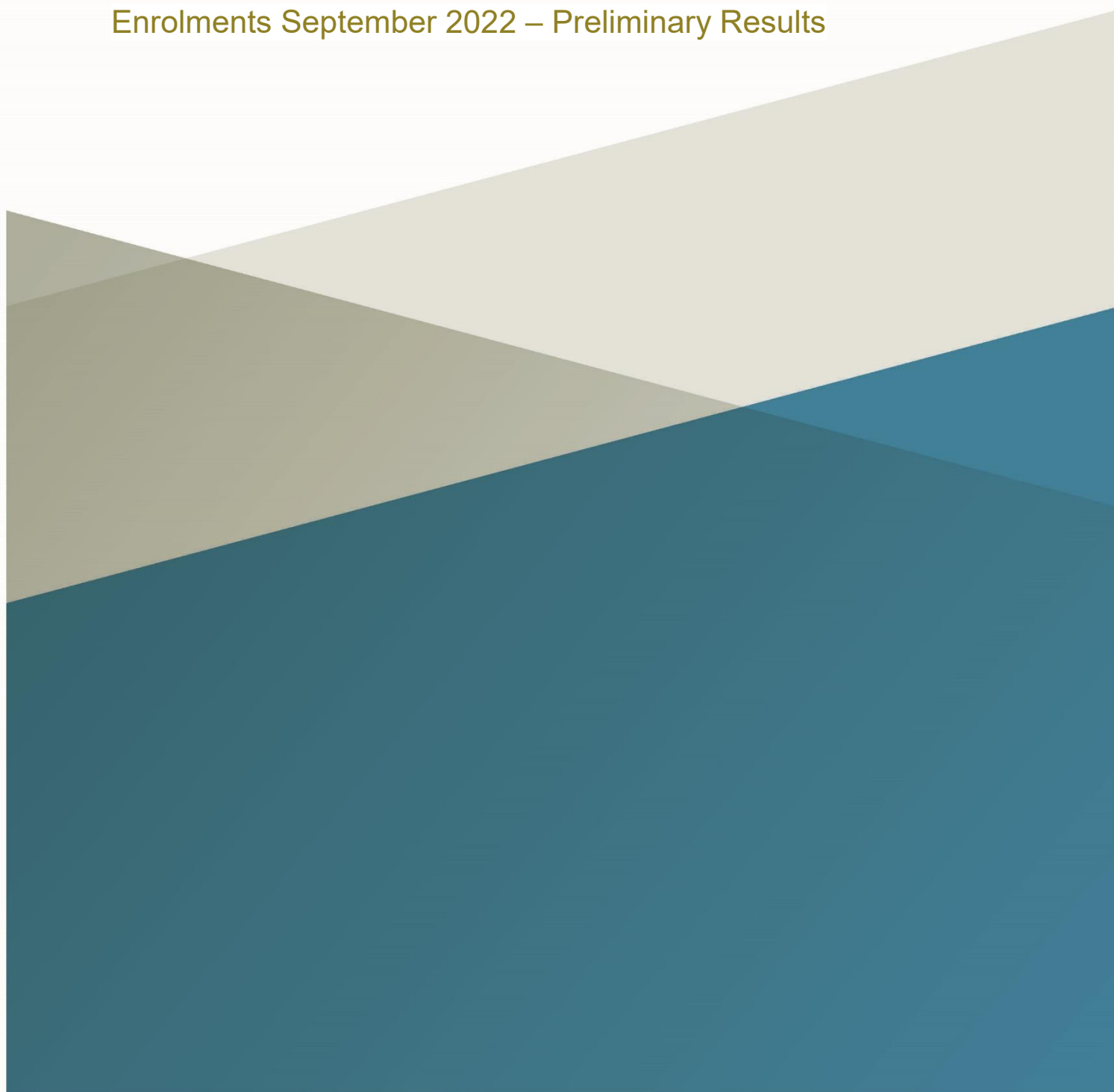




An Roinn Oideachais  
Department of Education

## Statistical Bulletin

Enrolments September 2022 – Preliminary Results



### **January 2023**

This report may be accessed at:

<https://www.gov.ie/en/publication/055810-education-statistics/>

For further information please contact by e-mail at:

[Statistics@education.gov.ie](mailto:Statistics@education.gov.ie)

## Enrolments September 2022 – Preliminary Results

This Statistical Bulletin presents first results on enrolments in mainstream primary and post-primary schools on 30th September 2022. The data is preliminary in nature, final data will be published in June 2023. Please note that enrolment data includes enrolments of Ukrainian children. Further data on Ukrainian enrolments can be found in the appendix to this document.

**Primary:** Total enrolments in mainstream primary schools stood at 549,189 in September 2022, an increase of 3,083 pupils, or 0.6 per cent, on September 2021 (546,106). Enrolments in primary schools have been falling since 2018 and this increase in 2022 is driven by Ukrainian enrolments which stood at 7,420 in September 2023. Excluding Ukrainian pupils' enrolments stood at 541,769 a fall of 4,337 on September 2021. This change is reflected in enrolments by school ethos, administrative county, etc.

All further analysis in this Bulletin includes Ukrainian pupils.

The number of girls increased by 929 pupils, from 267,160 to 268,089 and the number of boys increased by 2,154 from 278,946 to 281,100.

Figure 1 presents percentage of total enrolments by school ethos. Total enrolments in Catholic schools stood at 488,076 in September 2022, representing 88.9 per cent of all pupils, down from 89.2 per cent in 2021. Enrolments in multi-denominational schools stood at 42,981, accounting for 7.8 per cent of the total (up from 7.6% in 2021), while Church of Ireland schools had enrolments of 16,194 representing 2.9 per cent of all pupils. Other faiths accounted for 1,938 pupils, or 0.4 per cent.

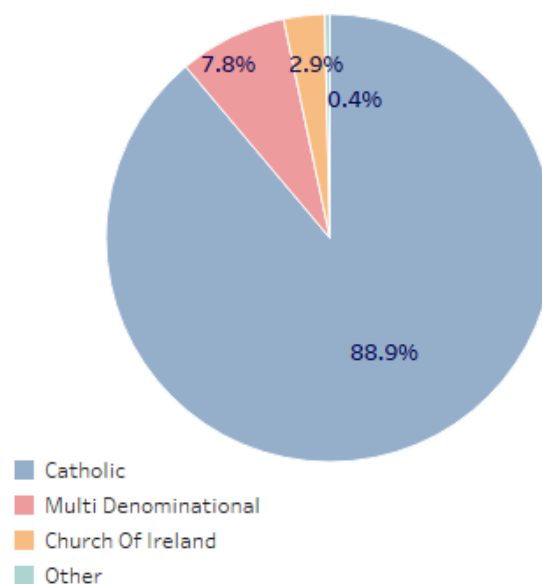


Figure 1. Enrolments in mainstream primary schools by school ethos, September 2022

Figure 2 presents the absolute and percentage change by ethos. The fastest growing category in both percentage and absolute terms was multi-denominational schools which increased by 3.6 per cent with an additional 1,479 pupils. This compares with Catholic schools which increased by 0.2 per cent, or 1,058 pupils. *Note: the category multi-denominational includes inter-denominational schools.*

Figure 2. Absolute and percentage change in enrolment in mainstream schools, by ethos, 2021, 2022

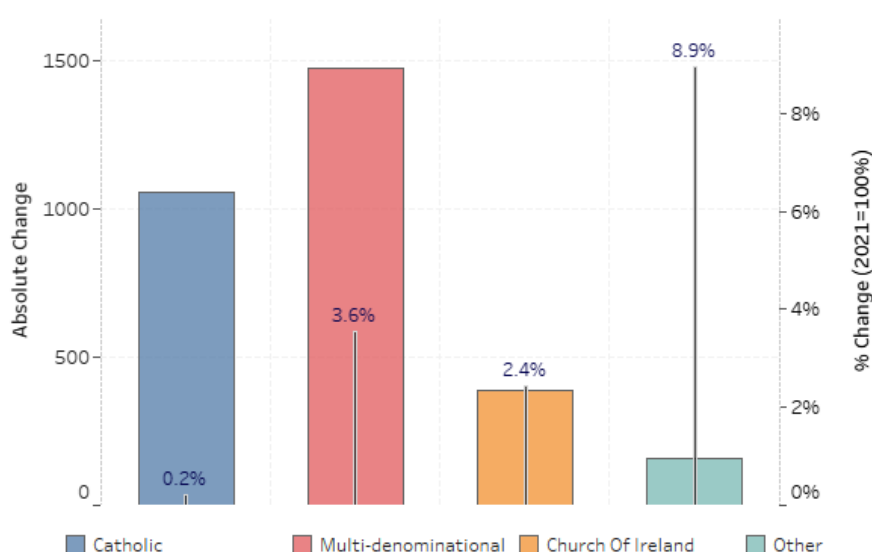


Table 1 presents schools by ethos from 2012 to 2022. Between 2018 and 2022 the number of schools with a Catholic ethos fell by 37, from 2,776 to 2,739 while those with a multi-denominational<sup>1</sup> ethos rose by 30, from 136 to 166. As illustrated in Figure 3 this is a part of a longer-term trend, with the number of Catholic schools falling by 118 in the last ten years, while the number of multi-denominational schools has risen from 97 to 166, an increase of 71.1 per cent.

Table 1. Mainstream primary schools by ethos, 2012 – 2022

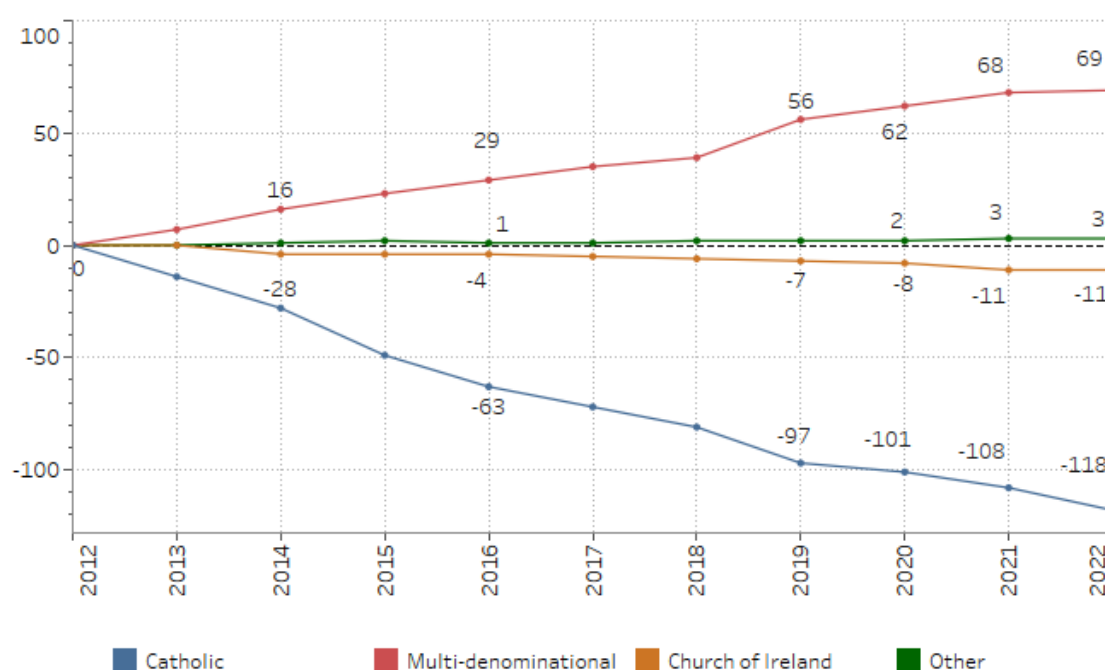
	<i><b>Catholic</b></i>	<i><b>Church of Ireland</b></i>	<i><b>Multi-denominational<sup>1</sup></b></i>	<i><b>Other</b></i>	<i><b>Total</b></i>
2022	2,739	168	166	22	3,095
2021	2,749	168	165	22	3,104
2020	2,756	171	159	21	3,107
2019	2,760	172	153	21	3,106
2018	2,776	173	136	21	3,106
2017	2,785	174	132	20	3,111
2016	2,794	175	126	20	3,115
2015	2,808	175	120	21	3,124
2014	2,829	175	113	20	3,137
2013	2,843	179	104	19	3,145
2012	2,857	179	97	19	3,152

<sup>1</sup> The category multi-denominational includes inter-denominational schools.

The changes in school numbers by ethos have occurred due to various reasons, such as, closure of small schools, where enrolments have declined, amalgamation of schools which are in a close proximity to each other, and the opening of new multi-denominational schools in response to parental choice.

These trends in closures, amalgamations and openings have led to a gradual decline overall in the number of primary schools. Despite these changes, Catholic schools still comprise the vast majority of mainstream primary schools, with 88.5 per cent of schools having a Catholic ethos in 2022.

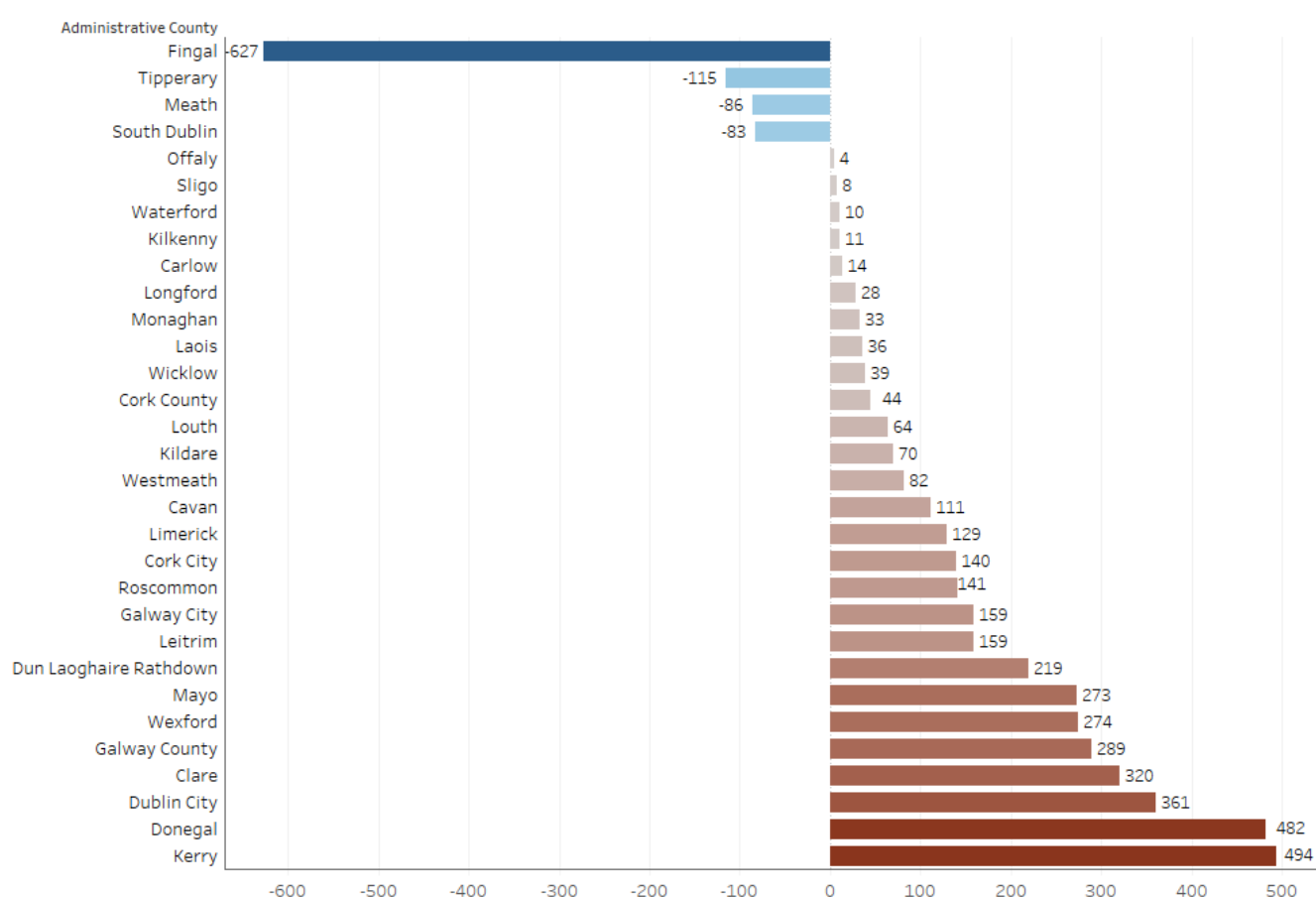
Figure 3. Absolute change in school numbers by ethos since 2012



## Change by administrative county

When the change in enrolments since 2021 by administrative county is examined, the data shows that the largest decrease in enrolments occurred in Fingal County Council (627), followed by Tipperary County Council (115). Most of counties showed an increase in enrolments as a result of enrolment of Ukrainian pupils, with a major increases in Donegal (482) and Kerry (494) in particular.

Figure 4. Absolute change in enrolments by administrative county, 2021, 2022



**Post-primary:** Total enrolments in post-primary schools stood at 406,457 at September 2022 an increase of 14,759 pupils, or 3.8 per cent, on September 2021 (391,698). This includes enrolments of 4,389 Ukrainian pupils (in September 2022), and excluding these pupils enrolments increased by 10,370. The number of girls stood at 201,164 while the number of boys stood at 205,293.

Figure 5 presents percentage of total enrolments by school ethos. Catholic schools dominated with 197,801 pupils. There were 193,391 pupils in multi-denominational schools<sup>2</sup> and 12,209 in Church of Ireland schools. Figure 6 shows the absolute and percentage change by ethos. Pupils in multi-denominational schools increased by 5.5 per cent (10,076 pupils) over the twelve months, which was ahead of the rise in Catholic schools which saw their numbers rise by 4,190 (2.2%). Church of Ireland schools saw an increase in enrolments, by 431 (3.7%).

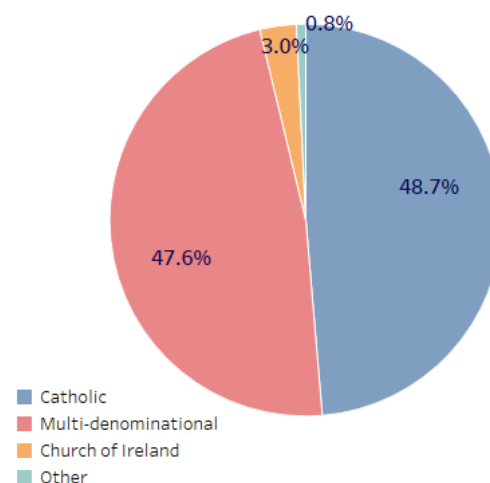
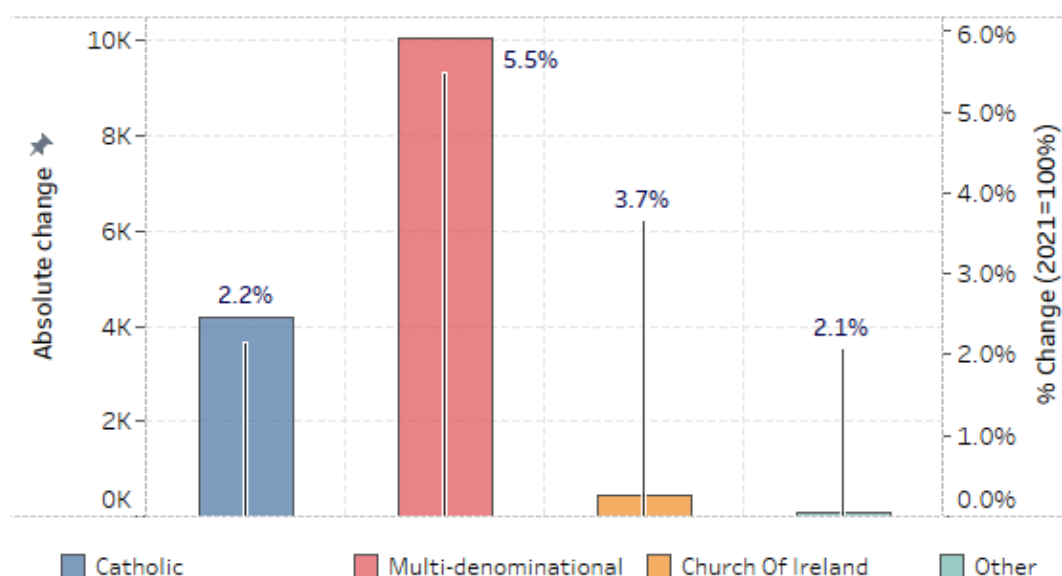


Figure 5. Enrolments in post-primary schools by school ethos, September 2022

Figure 6. Absolute and percentage change in enrolment in post-primary schools, by ethos, 2021, 2022



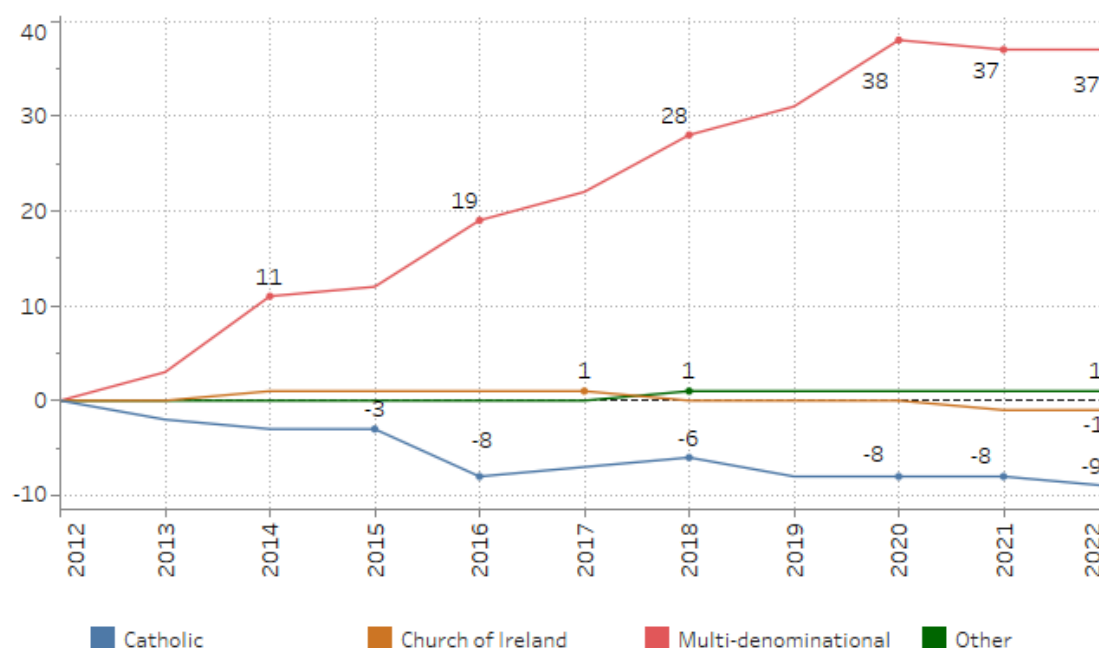
<sup>2</sup> The majority of schools under the patronage of the Education and Training Boards (ETBs) were categorised as inter-denominational up to 2018. 181 schools have since changed their description to multi-denominational but for the purpose of this report inter-denominational are combined with multi-denominational schools. For a full list of schools by ethos see the list of individual schools on the Department's website.

The number of post-primary schools has been gradually rising for the last number of years, going from a low of 699 in 2012 to 730 in 2020. As can be seen in Table 2, this growth has been led by multi-denominational schools, which have increased by 11.5 per cent in the last 10 years from 321 in 2012 to 358 in 2022. In the same period the number of Catholic schools has decreased by 2.6 per cent, from 352 to 343.

Table 2. Post-primary schools by ethos, 2012 – 2022

	<i>Catholic</i>	<i>Church of Ireland</i>	<i>Multi-denominational<sup>3</sup></i>	<i>Other</i>	<i>Total</i>
2022	343	21	358	5	727
2021	344	21	358	5	728
2020	344	22	359	5	730 <sup>4</sup>
2019	344	22	352	5	723
2018	346	22	349	5	722
2017	345	23	343	4	715
2016	344	23	340	4	711
2015	349	23	333	4	709
2014	349	23	332	4	708
2013	350	22	324	4	700
2012	352	22	321	4	699

Figure 7. Absolute change in post-primary school numbers by ethos since 2012

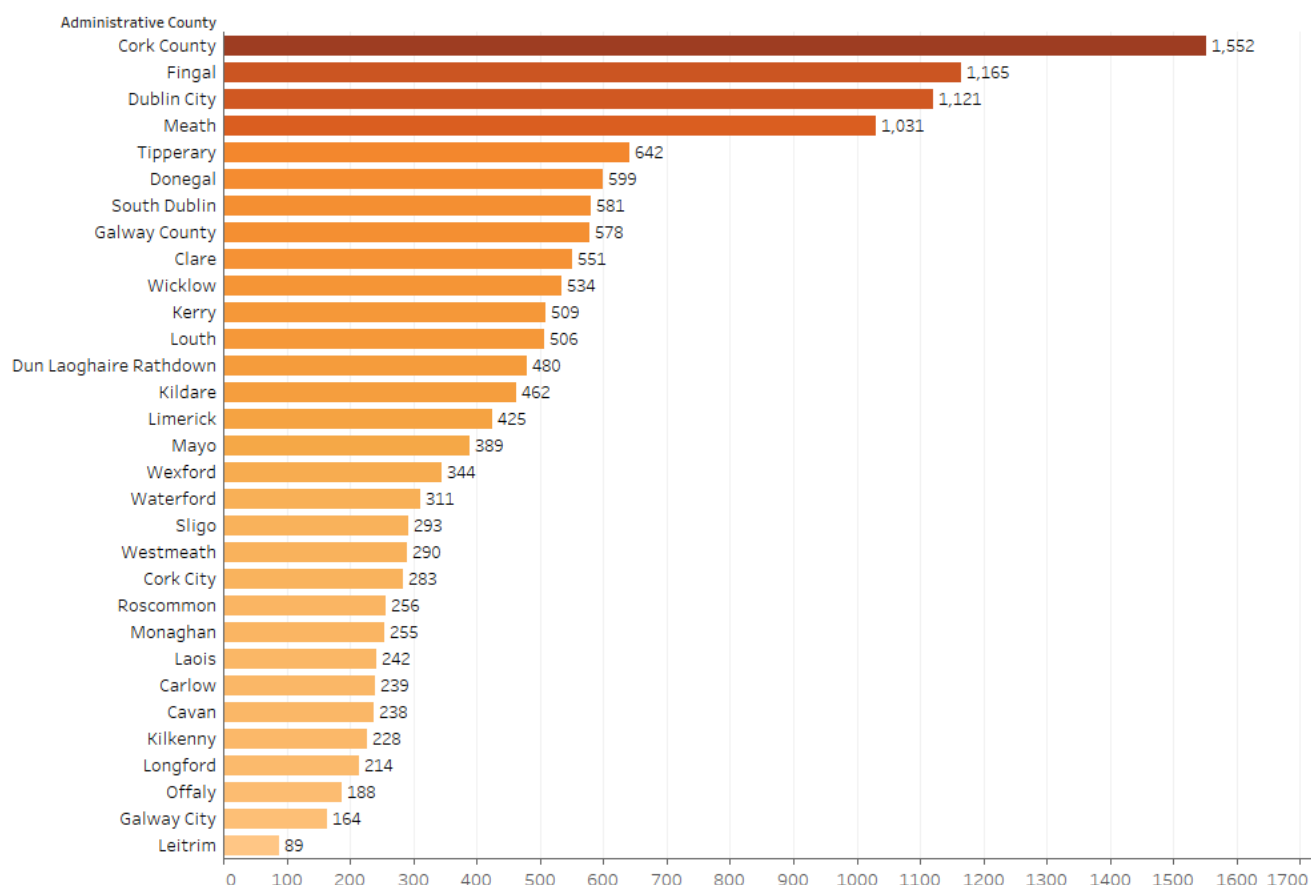




## Change by administrative county

Figure 8 shows the change in enrolments by administrative county since 2021. Cork County and Fingal show the largest increases, 1,552 and 1,165 pupils, respectively. The smallest increase occurred in Leitrim (89) and Galway City Council (164).

Figure 8. Absolute change in enrolments by administrative county, 2021, 2022



## All schools

Table 3 shows the primary and post-primary enrolments by schools ethos for years 2021 and 2022, and percentage change on 2021. As can be seen, the largest increase in both sectors combined occurred in multi-denominational schools with rises of 5.1 per cent between 2021 and 2022, followed by 4.6 per cent increase in other school ethos.

Table 3. Primary and post-primary schools enrolments by school ethos, 2021, 2022

	<i><b>Ethos/Religion</b></i>	<i><b>2021</b></i>	<i><b>2022</b></i>	<i><b>Difference (2021=100%)</b></i>
<i>Primary</i>	Catholic	487,018	488,076	0.2
	Church of Ireland	15,807	16,194	2.4
	Multi-denominational	41,502	42,981	3.6
	Other	1,779	1,938	8.9
<i>Post-primary</i>	Catholic	193,611	197,801	2.2
	Church of Ireland	11,778	12,209	3.7
	Multi-denominational	183,315	193,391	5.5
	Other	2,994	3,056	2.1
<i>Primary &amp; Post-primary</i>	Catholic	680,629	685,877	0.8
	Church of Ireland	27,585	28,403	3.0
	Multi-denominational	224,817	236,372	5.1
	Other	4,773	4,994	4.6

### Background Notes:

The source for this data is the Annual Census for 2022/2023, which is returned via the Primary/Post-Primary Online Database (POD/P-POD). The primary level data is reporting enrolments in mainstream schools only. Data is anchored on the census data of 30th September 2022. Note that only schools aided by the Department of Education are included in this report.

This data is provisional and was published in December 2022. Final data will be published in June 2023. The final data will replace the provisional data.

Queries should be sent to [statistics@education.gov.ie](mailto:statistics@education.gov.ie) or by phone at 01-889 2311.

The detailed Excel data tables for previous years can be downloaded here:

<https://www.gov.ie/en/collection/63363b-data-on-individual-schools/>

## Appendix: Ukrainian pupils' enrolments

The enrolment data shown below provides insights into Ireland's response to the Ukrainian crisis, particularly, the primary and secondary school pupils' enrolments who arrived from Ukraine since the start of Russian invasion of Ukraine, i.e., 24 February 2022.

### A.1 Primary

As of 22nd December 2022, there were 8,823 Ukrainian pupils enrolled in primary level, i.e., an increase by 3,780 (75.0%) since 29th June (5,043). Table A.1.1 shows enrolment by standards with the highest enrolment in junior infants' class (13.7%).

Table A.1.1 Ukrainian pupils' enrolment in primary schools by standard

<i>Standard</i>	<i>Total to date</i>	<i>%</i>
Junior Infants	1,210	13.7%
Senior Infants	948	10.7%
First Class	1,000	11.3%
Second Class	1,190	13.5%
Third Class	1,170	13.3%
Fourth Class	1,091	12.4%
Fifth Class	1,143	13.0%
Sixth Class	1,031	11.7%
Special Class	40	0.5%
Total	8,823	100.0%

In total there were 1,495 primary schools where Ukrainian pupils were enrolled, of which 283 schools had 10 or more pupils and 192 schools had 10% or more Ukrainians enrolled in (Tab A.1.2).

Table A.1.2 Primary schools with Ukrainian pupils' enrolment

<i>Primary Schools</i>	<i>No.</i>
Schools with enrolments	1,495
Schools with 10 or more Ukrainian Pupils	283
Schools with 10% or more Ukrainian Pupils	192

The enrolment distribution by County is shown in Tab A.1.3 where it can be seen that Dublin has the highest per cent of Ukrainian enrolments (13.8%) with Kerry being the second (10.0%).

Table A.1.3 Ukrainian pupils' enrolment in primary schools by County

<i>County</i>	<i>Total to date</i>	<i>%</i>
Dublin	1,216	13.8%
Kerry	879	10.0%
Cork	872	9.9%
Donegal	752	8.5%
Clare	570	6.5%
Galway	555	6.3%
Mayo	485	5.5%
Wexford	433	4.9%
Wicklow	293	3.3%
Limerick	284	3.2%
Meath	270	3.1%
Waterford	248	2.8%
Cavan	213	2.4%
Louth	212	2.4%
Leitrim	191	2.2%
Westmeath	179	2.0%
Tipperary	162	1.8%
Kilkenny	155	1.8%
Roscommon	145	1.6%
Sligo	142	1.6%
Kildare	137	1.6%
Laois	112	1.3%
Carlow	109	1.2%
Offaly	96	1.1%
Longford	57	0.6%
Monaghan	56	0.6%
Total	8,823	100.0%

## A.2 Post-primary

As of 22nd December 2022, there were 4,930 Ukrainian pupils enrolled in post-primary level, i.e., an increase by 2,692 (120.3%) since 29th June (2,238). Table A.2.1 shows enrolment by programme with the highest enrolment in JC1 (25.6%).

Table A.2.1 Ukrainian pupils' enrolment in post-primary schools by programme

<i>Programme</i>	<i>Total to date</i>	<i>%</i>
JC1	1,261	25.6%
JC2	1,161	23.5%
JC3	656	13.3%
TY	624	12.7%
LC1	1,068	21.7%
LC2	160	3.2%
Total	4,930	100.0%

In total there were 569 post-primary schools where Ukrainian pupils were enrolled, of which 154 schools had 10 or more pupils and 26 schools had 10% or more Ukrainians enrolled in (Tab A.2.2).

Table A.2.2 Primary schools with Ukrainian pupils' enrolment

<i>Post-Primary Schools</i>	<i>No.</i>
Schools with enrolments	569
Schools with 10 or more Ukrainian Pupils	154
Schools with 10% or more Ukrainian Pupils	26

The post-primary schools enrolment distribution by County is shown in Tab A.2.3 where it can be seen that, similar to the primary schools distribution, Dublin has the highest per cent of Ukrainian enrolments (13.7%) with Kerry being the second (10.0%).

Table A.2.3 Ukrainian pupils' enrolment in post-primary schools by County

<i>County</i>	<i>Total to date</i>	<i>%</i>
Dublin	674	13.7%
Kerry	494	10.0%
Cork	482	9.8%
Donegal	405	8.2%
Clare	332	6.7%
Galway	313	6.3%
Mayo	252	5.1%
Wexford	204	4.1%
Limerick	178	3.6%
Louth	174	3.5%
Wicklow	170	3.4%
Waterford	131	2.7%
Sligo	127	2.6%
Meath	115	2.3%
Leitrim	110	2.2%
Tipperary	110	2.2%
Kilkenny	108	2.2%
Cavan	87	1.8%
Kildare	83	1.7%
Westmeath	79	1.6%
Laois	77	1.6%
Carlow	61	1.2%
Longford	56	1.1%
Roscommon	48	1.0%
Offaly	35	0.7%
Monaghan	25	0.5%
Total	4,930	100.0%