


**LIMISTÉAR FAOI
CHAOMHNIÚ SPEISIALTA MOLTA
CANDIDATE
SPECIAL AREA OF CONSERVATION**

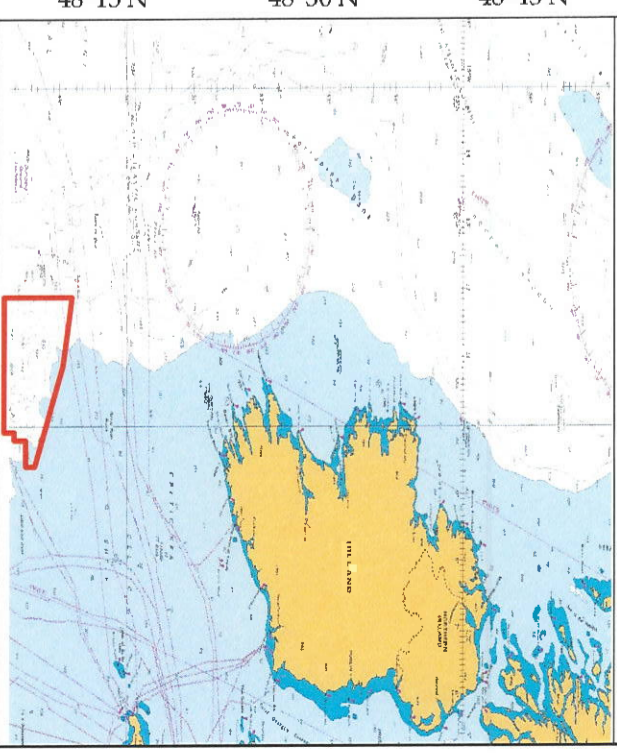
 Limistéar faoi Chaomhnú Speisialta Molta
Candidate Special Area of Conservation

Southern Canyons cSAC

002278

Achar / Area 1,443,429 ha

Córas Comhordanáidí Tíreolaíochta /
Geographic Co-ordinate System: WGS84

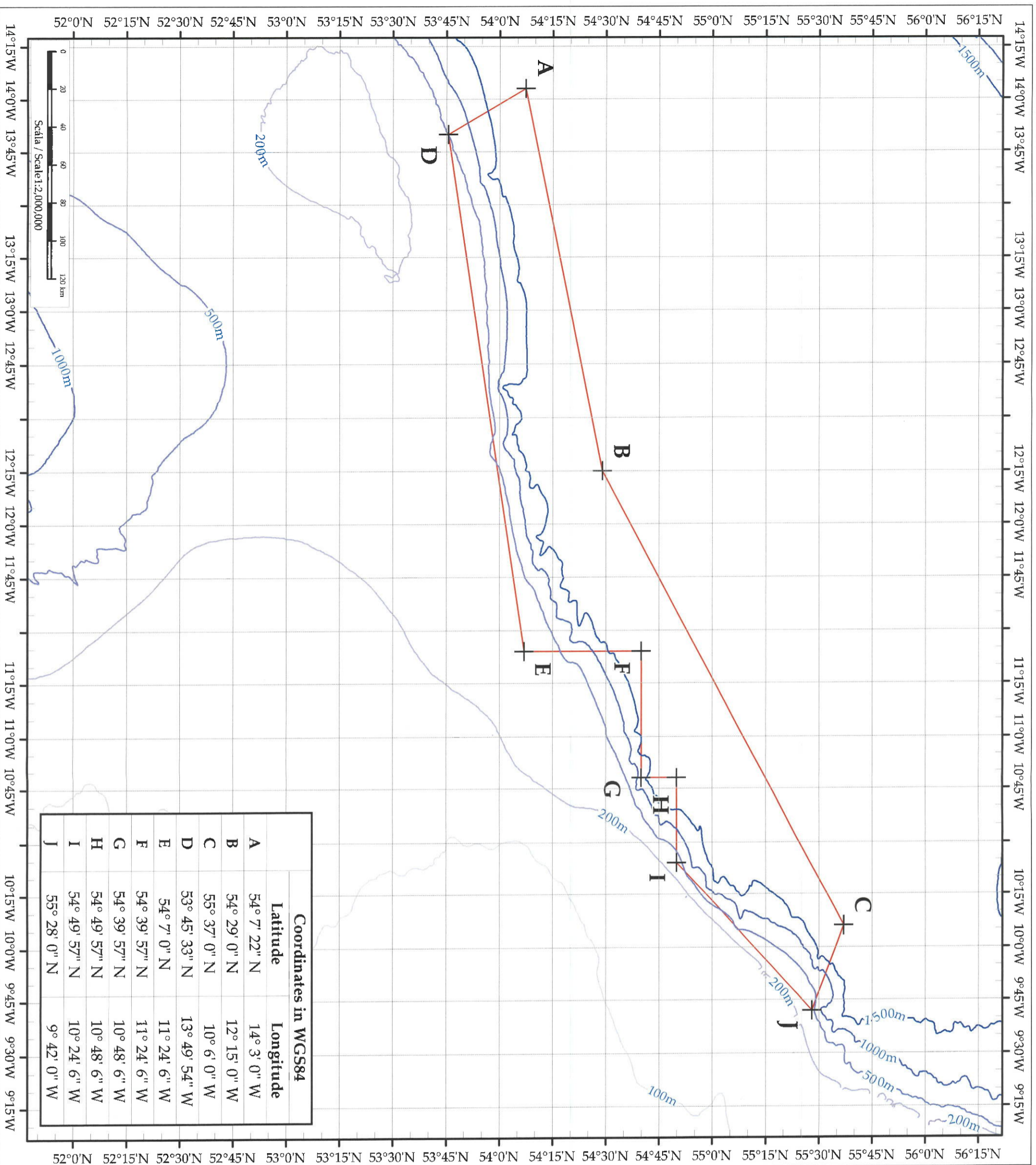


An Roinn Tíbhochta,
Rialtais Áitiúil agus Oidhreacht
Department of Housing,
Local Government and Heritage




Achar ríofa de réir ETRS89 LAEA. Europe (Uamhert Azimutal Equal Area)
Area Calculated in ETRS89 LAEA Europe (Uamhert Azimutal Equal Area)
Ta na comhrannáil bailinveadúnacha díortha as sonraí Shuirbhíreacht
Náisiúnta na hÉireann ar Ghrianghraf na Farraige © Suirbhíreacht Chieolaíochta na hÉireann
Bathymetric contours are derived from Irish National Seabed Survey data.

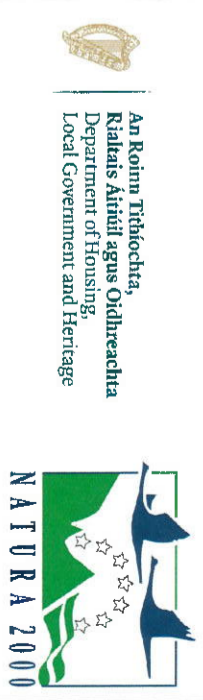
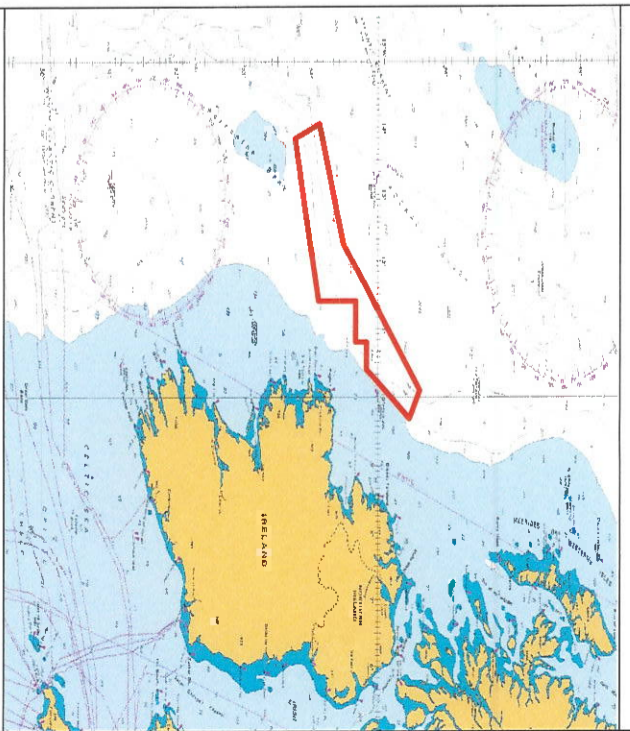
© Geological Survey of Ireland
© Uimh. Cheadúnais 102009.014 an UK Hydrographic Office
© UK Hydrographic Office Licence No. 102009.014



**LIMISTÉAR FAOI
CHAOMHNÚ SPEISIALTA MOLTA
CANDIDATE
SPECIAL AREA OF CONSERVATION**

 Limistéar faoi Chaomhnú Speisialta Molta
Candidate Special Area of Conservation

Porcupine Shelf cSAC
002267
Achar / Area 1,479,442 ha
Córas Comhordanáidí Tíreolaíochta /
Geographic Co-ordinate System: WGS84



Achar foirne de réir ETRS89 LAEA. Europe (lambert Azimuthal Equal Area)
Tá na comhrianta bainneadánacha díortha as sonraí Shuirbhíreacht
Náisiunta na hÉireann ar Chinnneall na Farraige. © Suirbhíreacht Gheolaíochta na hÉireann
Bathymetric contours are derived from Irish National Seabed Survey data.
© Geological Survey of Ireland
© Umh. Cheadunais 102009.014 an UK Hydrographic Office
© UK Hydrographic Office Licence No. 102009.014