

Update for NPHER

23rd July 2020



IEMAG



Daily Statistics - The following figures update daily at approximately 19.00

Total Confirmed

25,819

Daily Confirmed

17

Total Deaths

1,754

Daily Deaths

1

ICU Totals - The following figures update daily at approximately 11.00 and 18.45

ICU Capacity % (% Occ Beds / Max Capacity)

67.7

COVID in ICU

6

Suspected COVID in ICU

8

New COVID Cases (Last 24hrs)

0

Susp. COVID Cases (Last 24hrs)

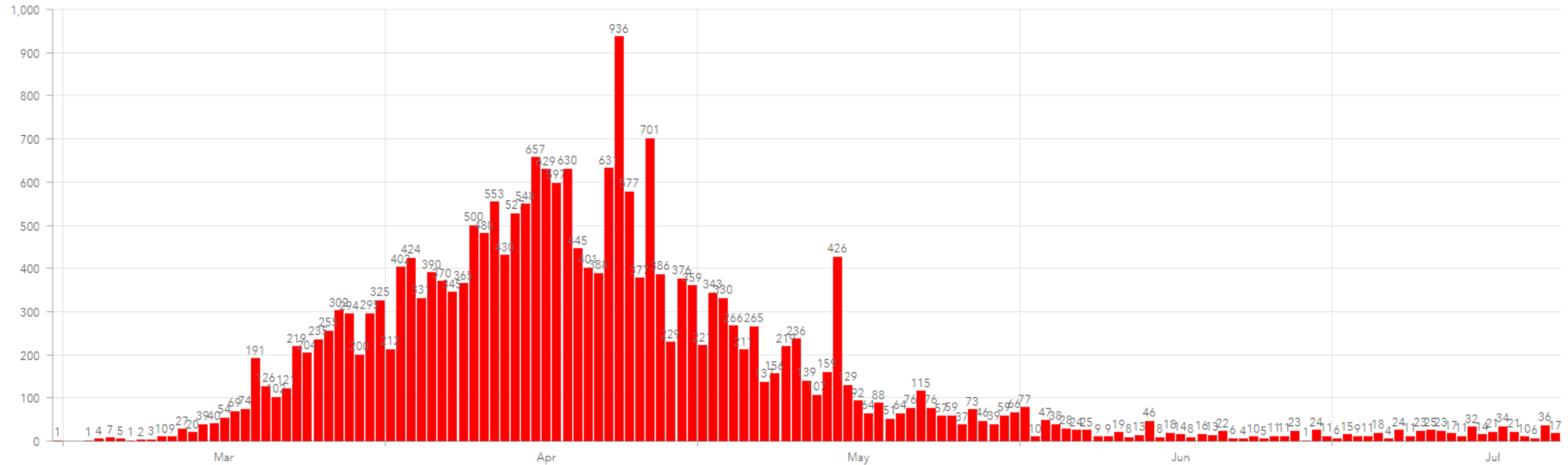
0

COVID Discharges (Last 24 hrs)

0

COVID in ICU (Ventilation)

4



Weekend effects on reporting

EPI week	Day of reporting		
	Sunday	Monday	Tuesday
Week 28 (5 th -11 th July)	18	4	24
Week 29 (12 th -18 th July)	17	11	32
Week 30 (19 th -25 th July)	9	6	36

Weekend effect seen over past three weeks

Cases over the fortnight to midnight 21/07/2020

287 cases notified – incidence 6.03/100,000 last 14 days

209 with epi date – incidence 4.39/100,000 last 14 days

Table 4: Number of confirmed COVID-19 cases by most likely transmission source notified from 08/07/2020 to midnight 21/07/2020

Most likely transmission source	Number of cases	Percent
Travel related	56	19.51%
Close contact with a known confirmed case	71	24.74%
Healthcare setting acquired: patient	8	2.79%
Healthcare setting acquired: staff	43	14.98%
Community transmission	80	27.87%
Under investigation	29	10.10%
Total	287	100.00%

Cases spread across 21 counties

11 of which had ≤ 5 cases

County	Cases
Dublin	166
Kildare	27
Cork	15
Meath	11
Wicklow	13
Galway	7
Donegal	6
Kerry	6
Louth	6
Waterford	6
Others	≤ 5

Occupation	% of notified cases
Health and related workers	23%
Building and construction workers incl. Engineering	9%
Students incl. schoolchildren	6%
Not Specified/Not Stated	47%

Age	No.
≤ 24	75
25-64	177
65+	34

CHO area 6: Dublin South East, Dun Laoghaire, Wicklow

CHO6	Latest date	Number of cases in past 14 days based on event date	14 day Incidence rates based on event date	Number of cases in past 14 days based on epi date	14 day incidence rates based on epi dates
All cases	20/07/2020	44	11.5	34	8.9
Excl. outbreaks	20/07/2020	24	6.3	18	4.7

CHO area 7: Dublin South Central, Dublin South West, Dublin West, Kildare and West Wicklow

CHO7	Latest date	Number of cases in past 14 days based on event date	14 day Incidence rates based on event date	Number of cases in past 14 days based on epi date	14 day incidence rates based on epi dates
All cases	20/07/2020	89	12.6	78	11.0
Excl. outbreaks	20/07/2020	62	8.8	56	7.9

CHO area 9: Dublin North West, Dublin North and Dublin North Central

CHO9	Latest date	Number of cases in past 14 days based on event date	14 day Incidence rates based on event date	Number of cases in past 14 days based on epi date	14 day incidence rates based on epi dates
All cases	20/07/2020	66	10.6	55	8.9
Excl. outbreaks	20/07/2020	51	8.2	48	7.7

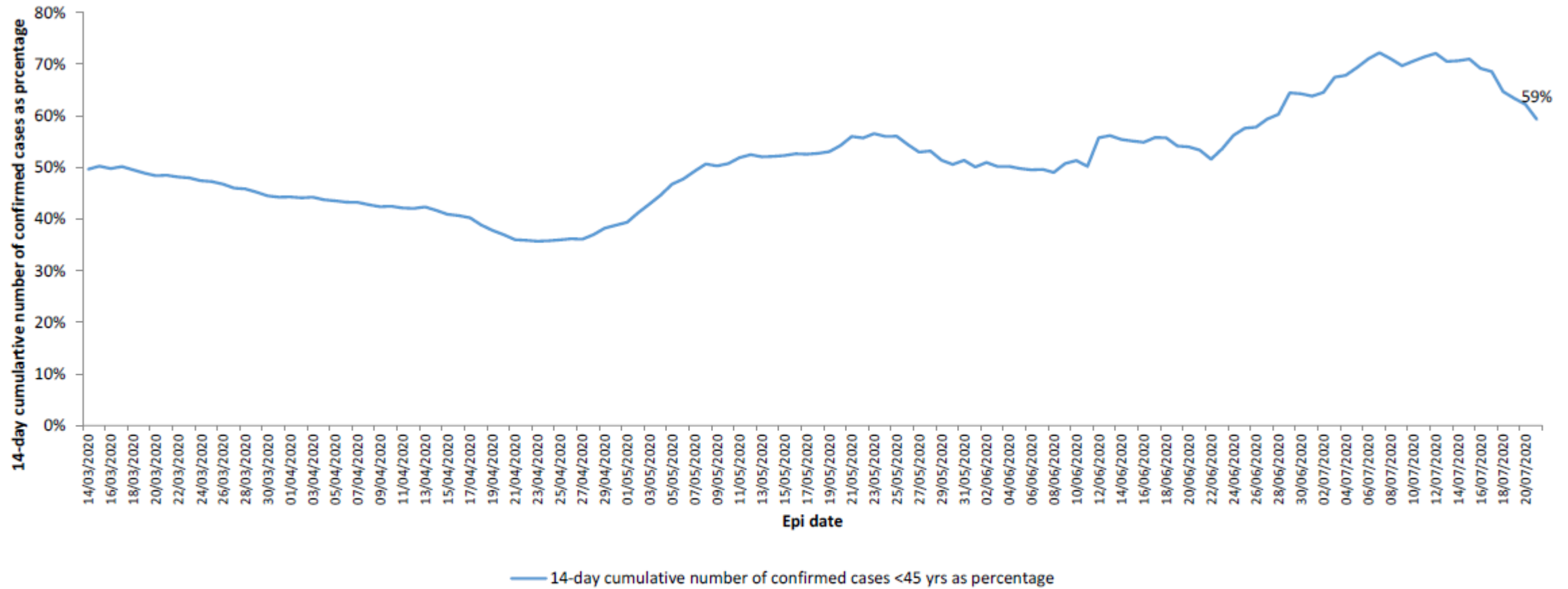


Figure 2: Fourteen-day cumulative number of confirmed COVID-19 cases <45 yrs notified to midnight July 21st for epi dates in the period March 14th to July 21st 2020, as percentage of all confirmed cases

Note: The number for the most recent days may adjust in the coming days as new cases are reported with epi dates in the current period

Data source: CIDR as of July 22nd at 13:35

Contact tracing data 05/07 - 19/07

Age Group	Average number of contacts
0-9	6.3
10-19	8.4
20-29	6.2
30-39	4.2
40-49	7.1
50-59	5.5
60-69	5.4
70-79	2.9
80+	5.0
Total	5.6

Outbreaks by setting/population

Number of outbreaks notified increased by 216 last week. 201 of these were associated with private households.

1 additional outbreak in a vulnerable group which occurred in April.

Table 1: Number of COVID-19 outbreaks notified in Ireland by outbreak setting and by closure status, up to midnight on Saturday 18/07/2020, N=2,145.

	Closed	Open	Total
Hospital	87	16	103
Nursing home	227	40	267
Community Hospital/Long-stay unit	28	2	30
Residential institution	160	13	173
Private house	1343	71	1414
Workplace	39	10	49
Travel related	23	5	28
Extended family	31	5	36
Community outbreak	11	3	14
Hotel	2	0	2
Public house	4	1	5
Restaurant / Café	1	1	2
Retail outlet	4	0	4
Other	10	2	12
Unknown	1	0	1
Not specified*	5	0	5
Total	1976	169	2145



*Outbreak setting is under investigation with the relevant public health departments

Table 3. Number of COVID-19 outbreaks in settings involving vulnerable populations, including the Roma community, Irish Traveller community, outbreaks in Direct Provision Centres, facilities for the homeless/those with addiction issues and prisons notified up to midnight on 18/07/2020 and laboratory confirmed cases linked to these outbreaks. *Data source: CIDR*

Vulnerable populations	Number of outbreaks notified			Laboratory confirmed cases linked to outbreaks				
	Week 29	Week10-29	Number open	Cases notified in week 29 2020	Total cases	Total hospitalised cases	Total ICU cases	Total number dead
Roma community	0	4	1	0	42	10	5	4
Irish Traveller community	0	8	2	0	65	4	2	0
Direct provision centres	1	17	0	2	184	12	0	0
Homeless^ / those with addiction issues	0	4	0	0	15	5	1	2
Prisons	0	6	0	0	24	2	0	0
Total	1	39	3	2	330	33	8	6

^ this includes some facilities that provide long term supported accommodation. Also includes staff of homeless facilities.

Data source: CIDR

COVID-19 Hospitalisations

Total Confirmed COVID-19 Cases

8am	2pm	8pm
14	13	14

Total Confirmed COVID-19 Cases (past 24hrs)

8am	2pm	8pm
2	3	1

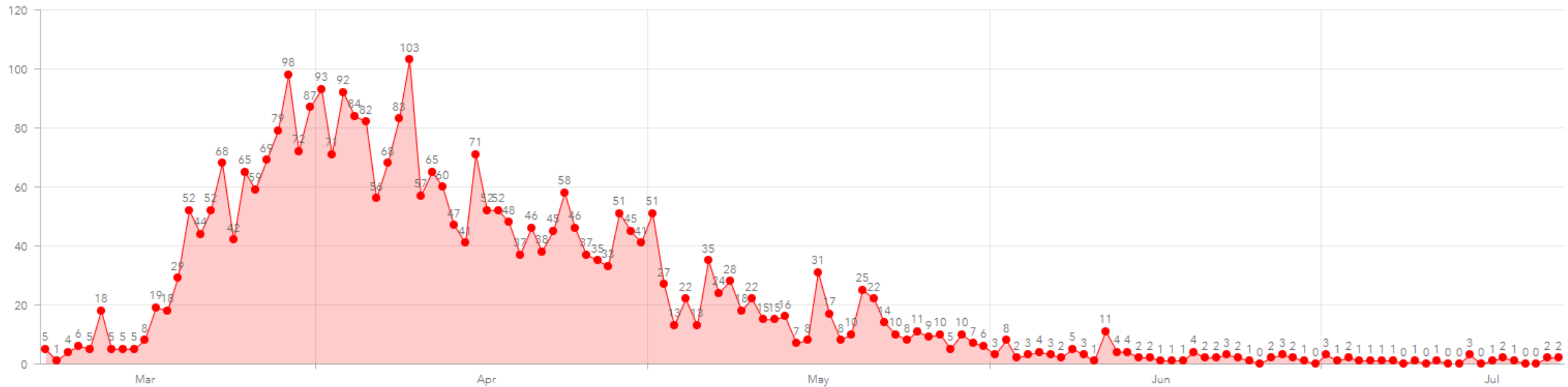
Suspected Cases Awaiting Results

8am	2pm	8pm
189	164	141

Profile of C-19 Positive (8am - Last 24hrs)

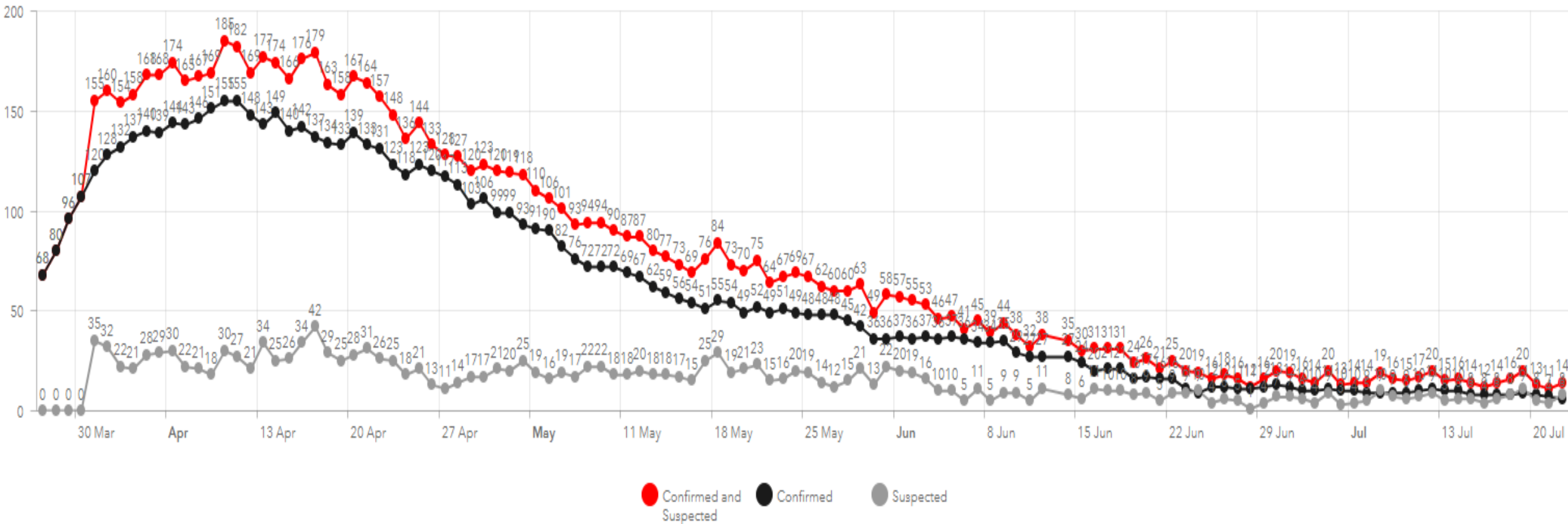
New Admissions	Discharges	Deceased
3	0	2

New COVID-19 Cases in Acute Hospitals - Last 24 Hours



ICU

14 cases; 6 confirmed and 8 suspect cases



Total Tests Completed

579,088

Total Positive Tests

29,017

Positive Rate (%)

5

All Tests Completed

Tests Completed

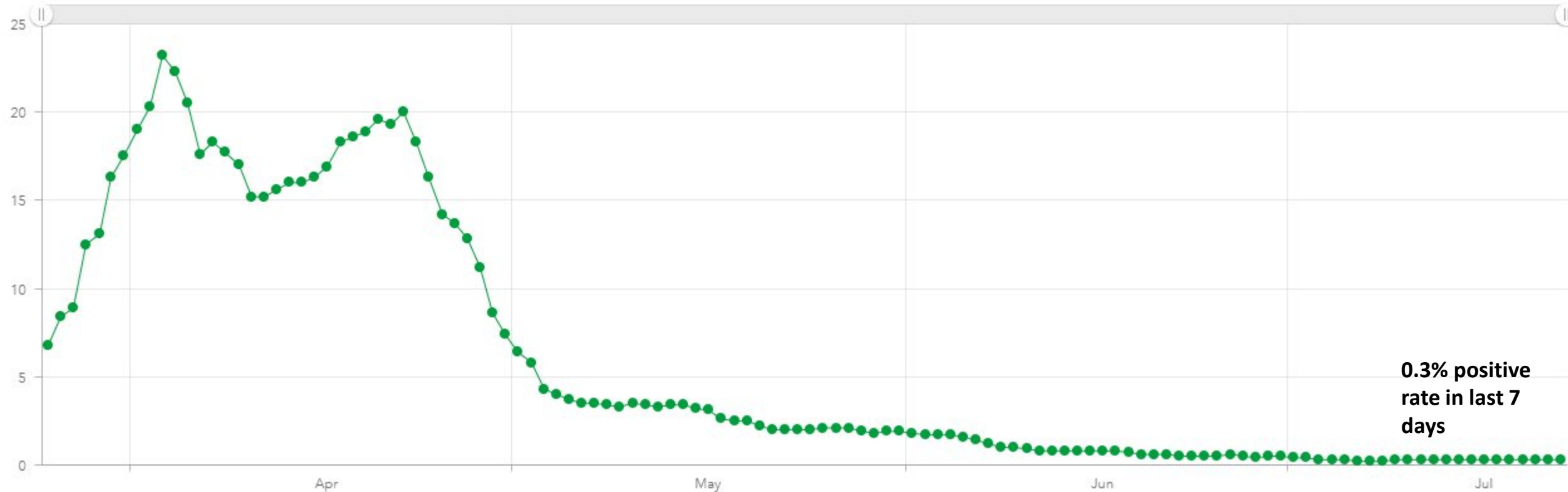
4,599

in last 24 Hours

Tests Completed

51,342

in last 7 Days



0.3% positive rate in last 7 days

Close Contacts

Average number per case last 7 days – 5.4

Median number per case last 7 days – 4.5

Referral to appointment 0.9 days

Swab to lab result overall 1.1 day (Community 1.2 days, Hospital 0.5 days)

Time to complete contact tracing – 0.9 days

End to end – referral to completion of contact tracing 1.85 days



Age specific sentinel GP ILI consultation rate per 100,000 population by week



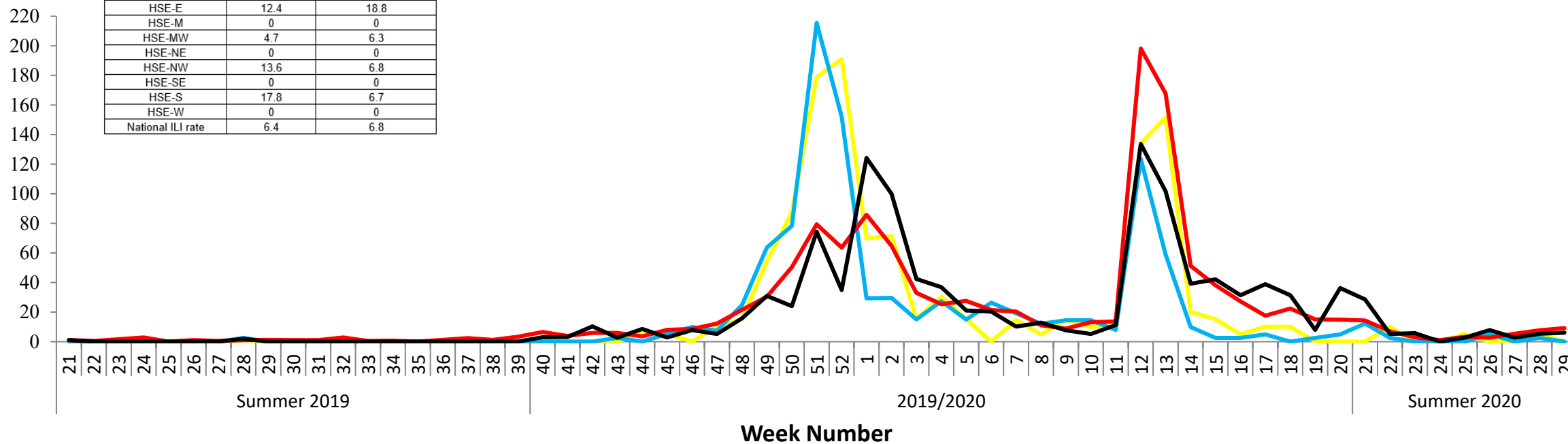
— 0-4 years
 — 5-14 years
 — 15-64 years
 — ≥ 65 years

Week	Reporting Population	ILI number	National rate per 100000	#Practices	# Practitioners	% Practices Reporting
28	280,463	18	6.4	56	145	98.2
29	248,900	17	6.8	47	127	82.6

Week	0-4 years	5-14 years	15-64 years	≥ 65 years
28	5.1	2.5	7.6	5.3
29	0.0	0.0	9.2	6.0

	28	29
HSE-E	12.4	18.8
HSE-M	0	0
HSE-MW	4.7	6.3
HSE-NE	0	0
HSE-NW	13.6	6.8
HSE-SE	0	0
HSE-S	17.8	6.7
HSE-W	0	0
National ILI rate	6.4	6.8

ILI rate per 100,000 population



Summary



- Globally the pandemic is continuing to accelerating in both numbers of cases and deaths.
- 14.8 million cases total. Increase of over 1.6 million in 7 days – 11% increase
- 53% of cases from the Americas. The Americas have the highest incidence of all continents (7,630 cases per 1 million population vs 3,345 cases per 1 million population in Europe).
- Many countries have no or very limited testing
- Considerable uncertainty regarding future course of the disease for some countries and regions.
- Information quality issues may impact our ability to fully understand the situation aboard.



Summary

ICU Admissions stable

Case count stable

Hospital admissions stable

Deaths stable

Testing positivity rate stable

Growth rate stable

Emerging Notes of caution

Reproductive number variable , above or close to 1.

14 day incidence increased versus last week

High proportion of cases in young people

Ongoing proportion of travel-associated cases and clusters

? Complexity of cases increasing