



Health Protection Surveillance Centre

# **COVID-19 update for NPHET**

Epi Team, HPSC, 04/05/2020

# Cases of COVID-19 notified in Ireland, as of May 4<sup>th</sup> 2020 at 11:15 compared with the same time on May 3<sup>rd</sup>

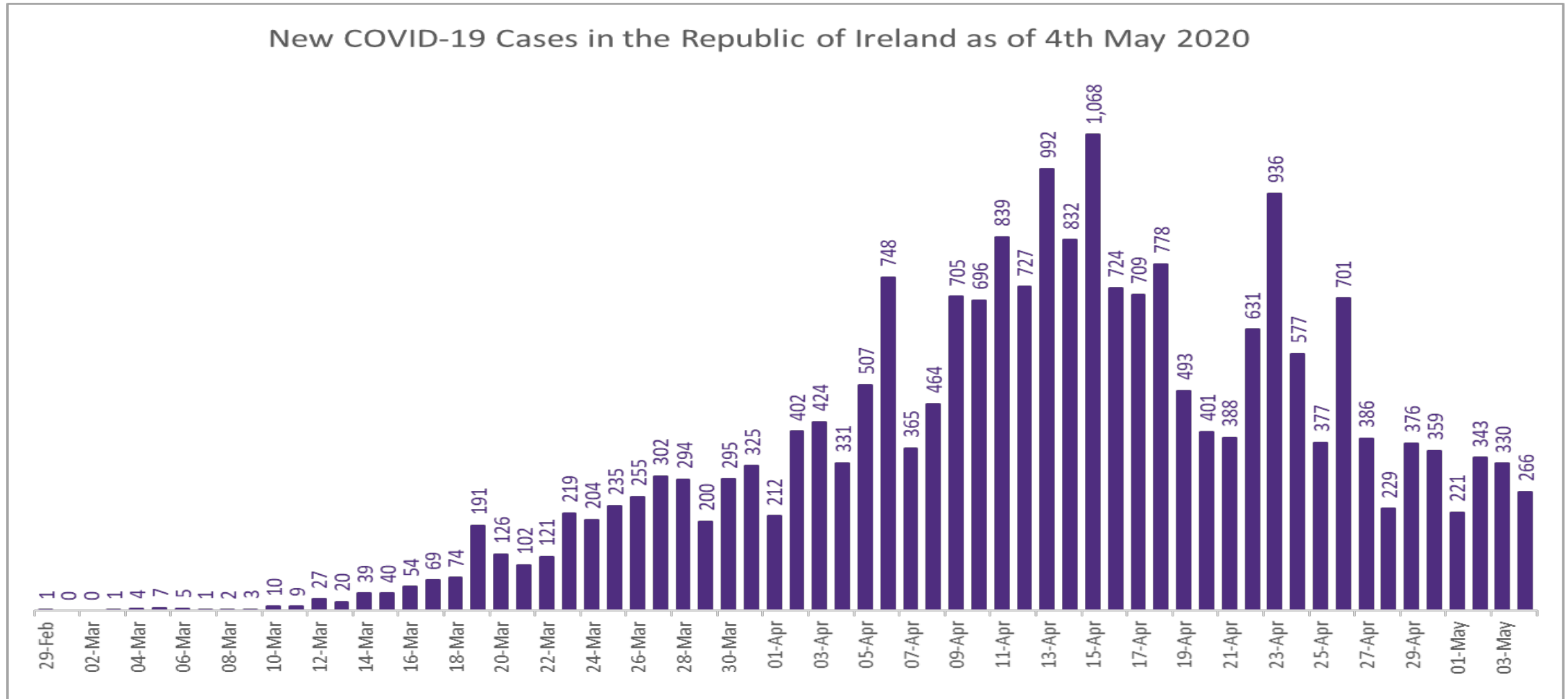


Number of events on CIDR as of:	04/05/2020 at 11:15	03/05/2020 at 11:15	Difference
COVID-19	21772	21506	266
Number hospitalised	2875	2837	38
Number admitted to ICU	365	363	2
Number of deaths	1088	1073*	15

\* Data amended to reflect validations in the past 24hr

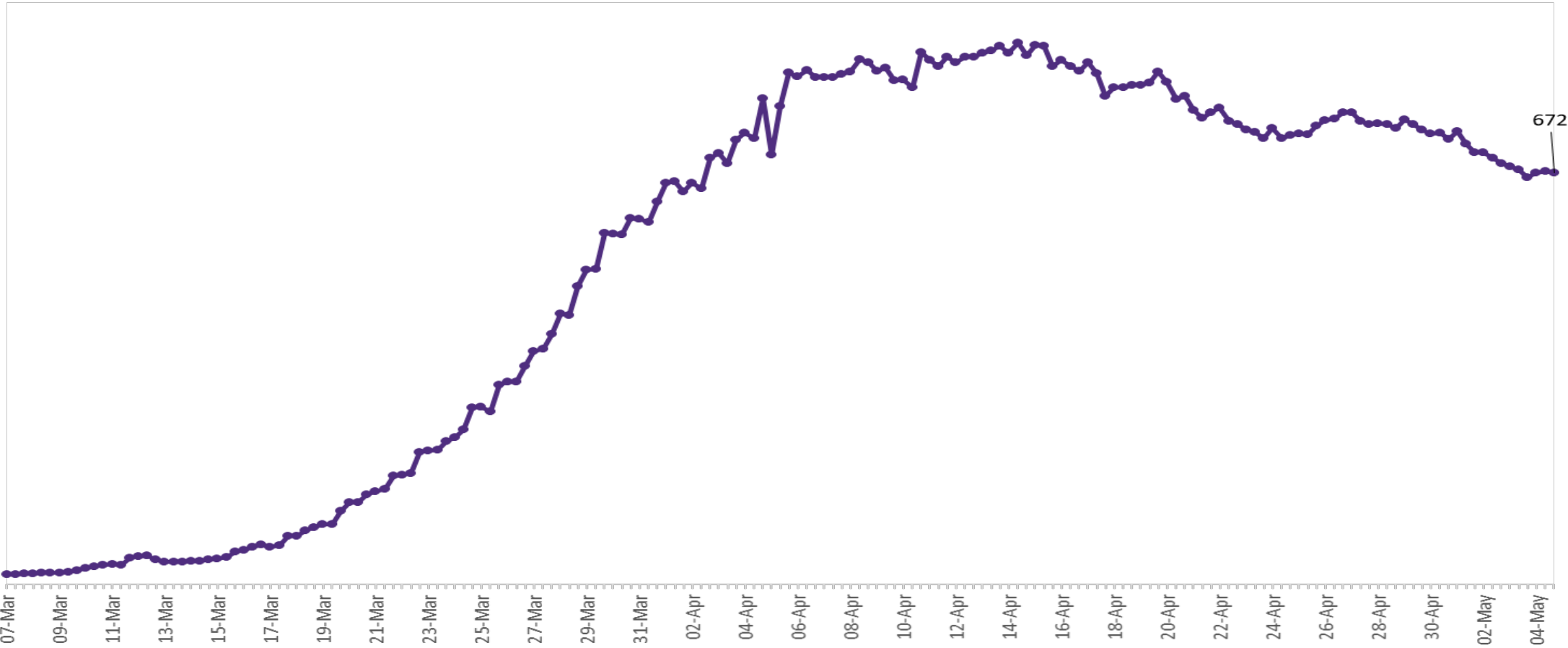
Daily totals reflect actual counts reported up to 11:15 am on 04/05/2020. Each day there may be updates to previously reported figures. This means that previously published daily counts will not necessarily sum to the latest cumulative figure. It also means that today's cumulative count may not match the sum of the previous day's cumulative count and today's daily count. This is due to ongoing data validation and data quality checks

## New Confirmed COVID-19 Cases in the Republic of Ireland as of 4<sup>th</sup> May 2020



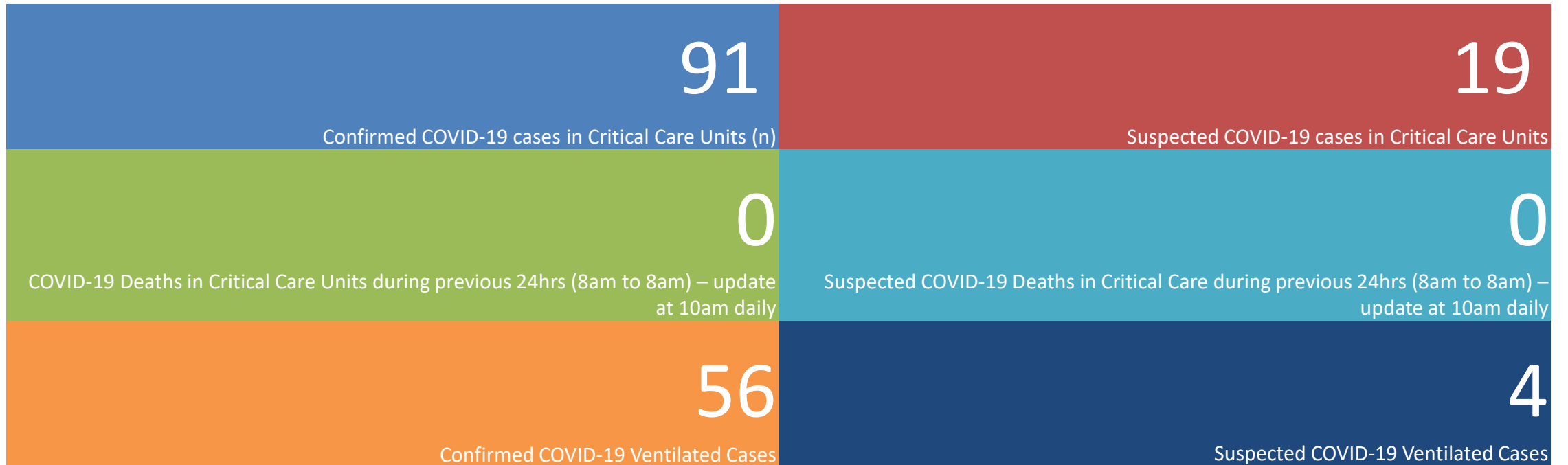
# Number of Confirmed COVID-19 cases admitted across 29 acute sites (including CHI)

Number of Confirmed COVID-19 Cases Admitted on Site at 0800hrs, 1400hrs and 2000hrs

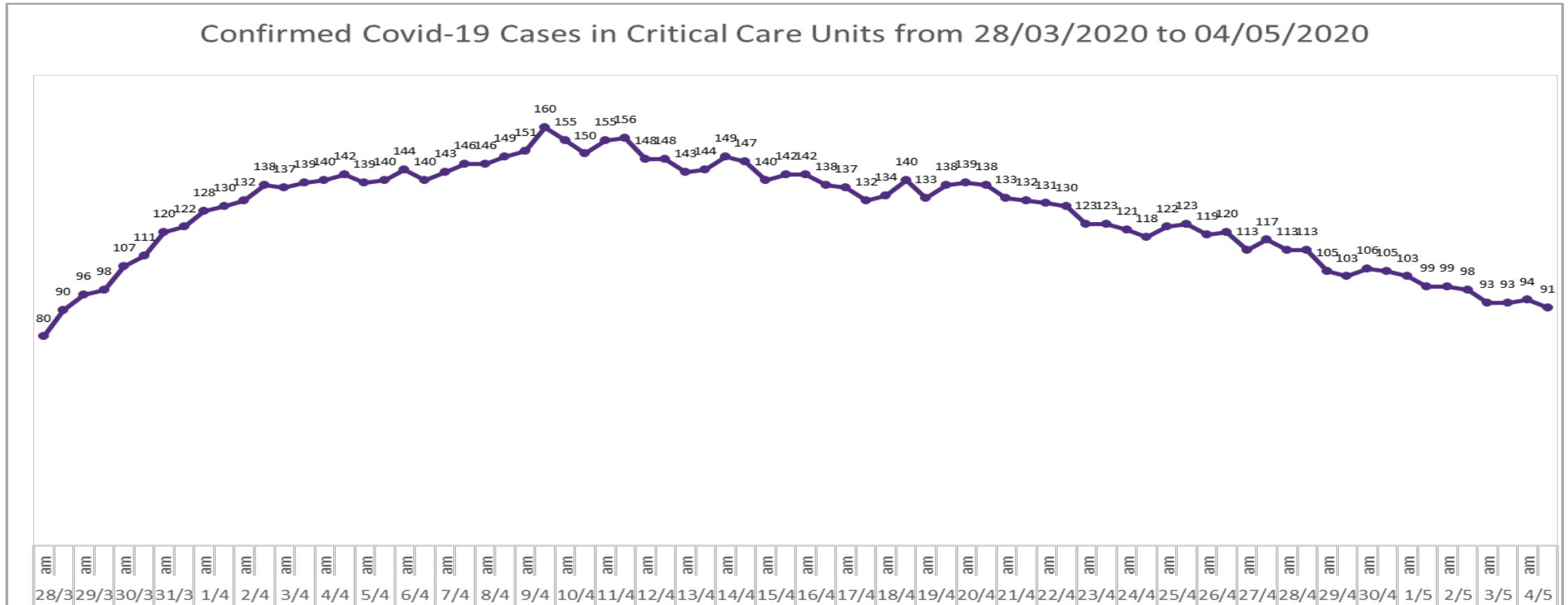


Source: SBAR Portal

## Critical Care Summary as at 1830hrs, 4<sup>rd</sup> May 2020



## Confirmed COVID-19 Cases in Critical Care Units



# Number of deaths in COVID-19 cases reported in Ireland as of May 4th 2020 at 11:13



	Deaths	% by case classification
Number of deaths in confirmed cases	1,088	82.49%
Number of deaths in probable cases*	91	6.90%
Number of deaths in possible cases*	140	10.61%
Total deaths	1,319	100.00%

**\*Number of deaths in probable and possible cases: 231**

# Number of COVID-19 outbreaks by outbreak setting and week notified in Ireland up to midnight on May 2<sup>nd</sup> 2020, N=702



Outbreak setting	Week of Outbreak Notification									
	10	11	12	13	14	15	16	17	18	Total
Nursing home	0	0	4	19	55	69	22	40	16	225
Community Hospital/Long-stay unit	0	0	0	0	11	5	0	10	3	29
Residential institution	0	0	0	6	26	23	24	32	23	134
Hospital	0	2	4	16	23	14	12	8	9	88
Community outbreak	0	0	0	2	2	3	2	0	2	11
Hotel	0	0	0	1	0	0	0	0	0	1
Public house	0	0	0	2	1	0	0	1	0	4
Retail outlet	0	0	0	0	1	0	0	0	2	3
Workplace	0	1	2	1	1	5	5	8	8	31
Travel related	1	4	6	5	4	0	0	1	0	21
Extended family	0	1	4	3	2	1	0	4	0	15
Private house	0	2	4	16	15	12	14	20	43	126
Other	0	0	0	3	1	3	3	2	0	12
Not Specified	0	0	0	0	0	0	1	0	1	2
<b>Total</b>	<b>1</b>	<b>10</b>	<b>24</b>	<b>74</b>	<b>142</b>	<b>135</b>	<b>83</b>	<b>126</b>	<b>107</b>	<b>702</b>

Note: 39 of 107 (36%) COVID-19 outbreaks notified during week 18 2020, were due to batch reporting of family outbreaks in private houses in HSE-South. These family outbreaks occurred during March and April 2020

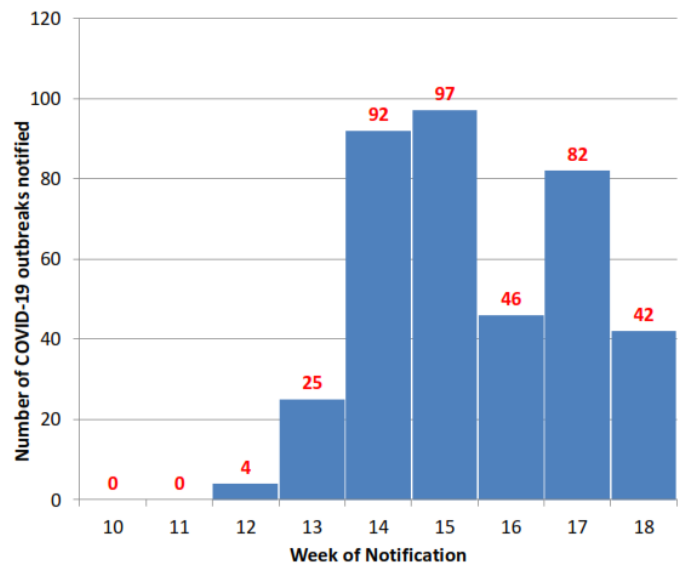
Data source: CIDR May 4<sup>th</sup> 08:40



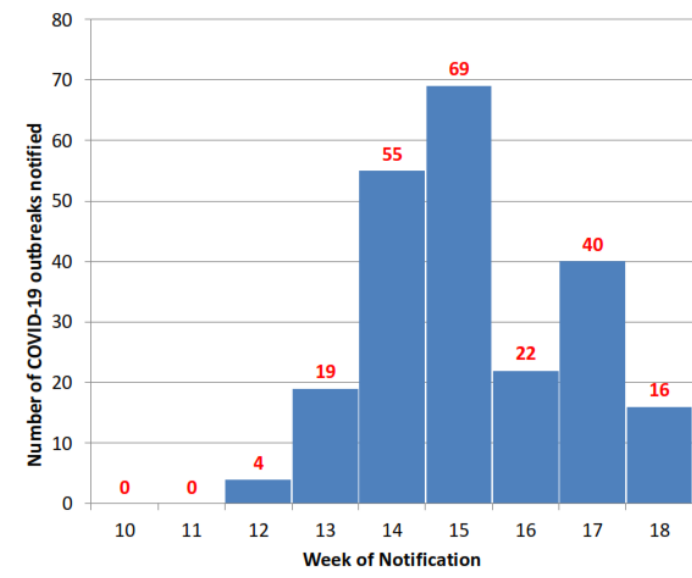


# Number of COVID-19 outbreaks in (A) all residential facilities, (B) Nursing Homes and (C) Hospital settings notified in Ireland by week of notification, up to midnight on May 2<sup>nd</sup> 2020

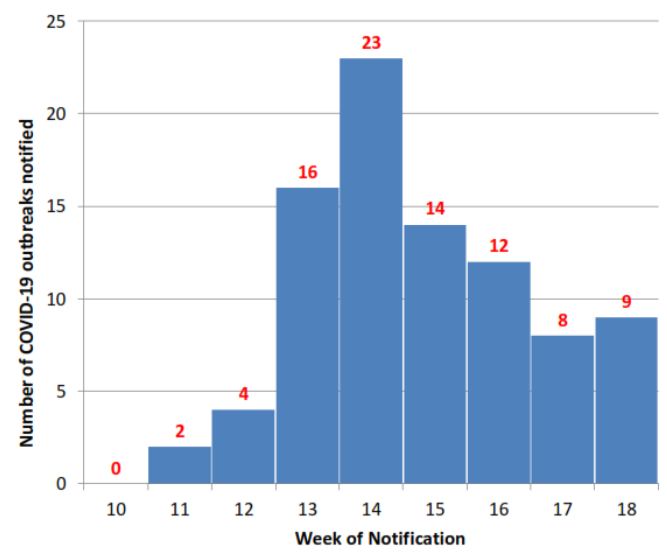
A - All Residential Facilities



B - Nursing Homes

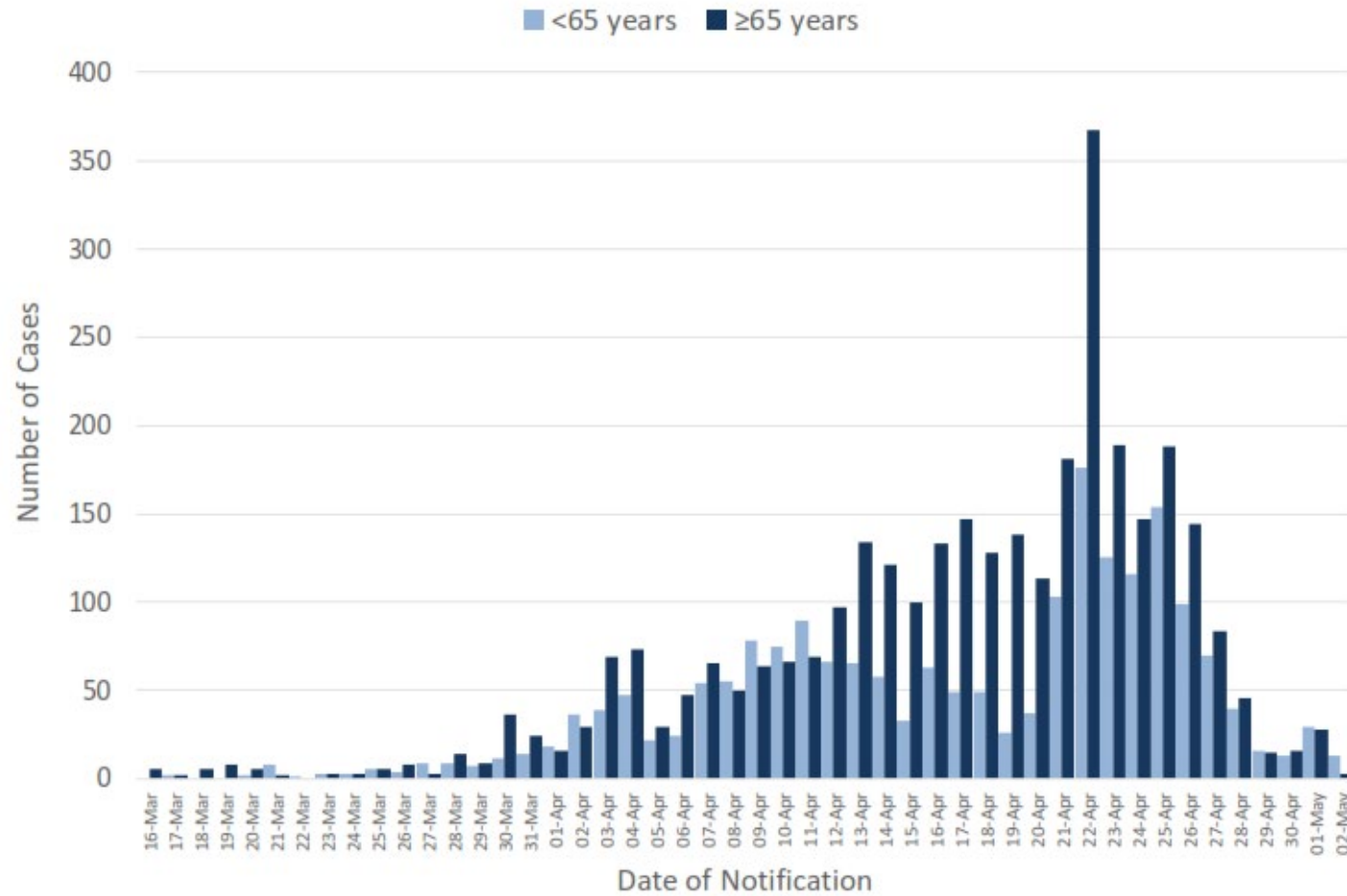


C - Hospital settings



Data source: CIDR May 4<sup>th</sup> 08:40

# Number of COVID-19 laboratory confirmed cases linked to outbreaks in Residential Facilities by age group (<65 year and ≥ 65 years) and by date of notification, up to midnight May 2nd 2020



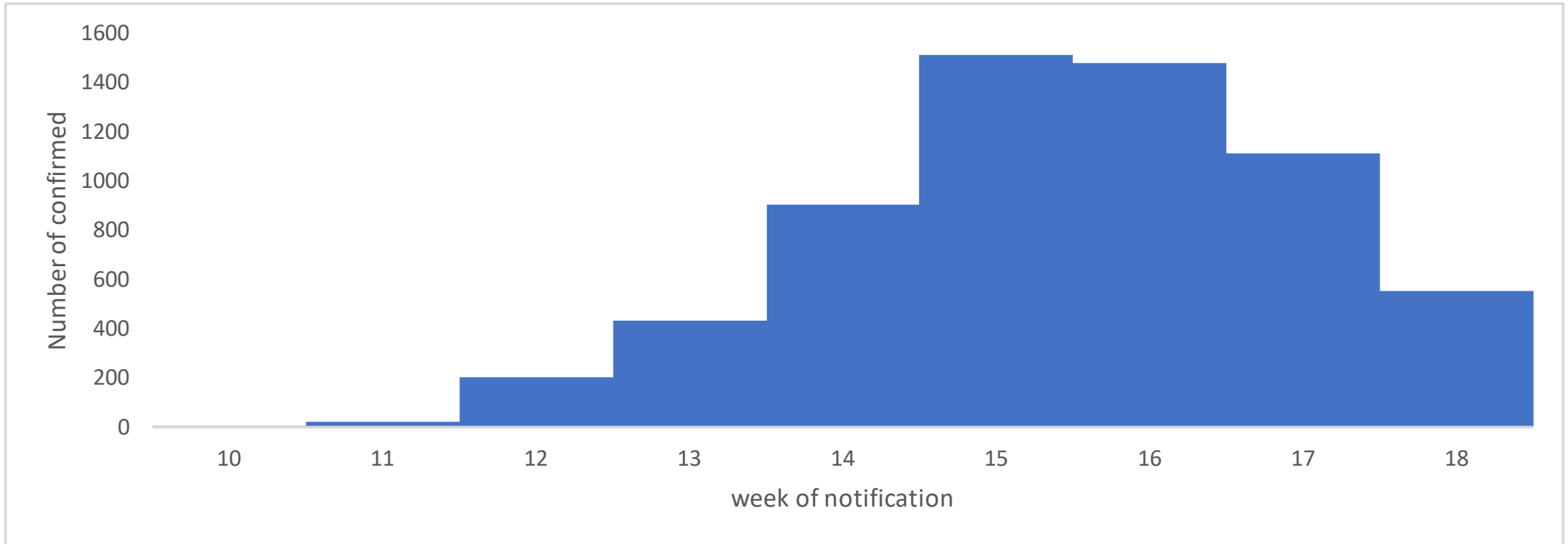
Data source: CIDR May 4<sup>th</sup> 08:40

# Number of notified COVID-19 cases who died (possible, probable and confirmed) and were linked to COVID-19 outbreaks in Acute Hospital Settings and Residential Facilities by setting and HSE-Area, as of midnight May 2<sup>nd</sup> 2020

HSE-Area	Residential Facilities				Hospitals	All Acute Hospital and Residential Facilities
	Nursing homes	Community Hospitals / Long-stay units	Residential institutions	All Residential Facilities		
East	420	32	27	479	21	500
Midlands	15	12	0	27	7	34
MidWest	35	0	0	35	8	43
NorthEast	135	0	2	137	8	145
NorthWest	15	14	1	30	2	32
SouthEast	22	3	1	26	8	34
South	9	10	5	24	10	34
West	34	1	4	39	7	46
<b>Total</b>	<b>685</b>	<b>72</b>	<b>40</b>	<b>797</b>	<b>71</b>	<b>868</b>

Data source: CIDR May 4<sup>th</sup> 08:40

# Number of confirmed COVID-19 cases in HCW by week of notification, to May 2<sup>nd</sup> 2020



Note: there may be a delay in capturing information on HCW status on CIDR and thus not all recent HCW cases may be captured in this figure

Data source: CIDR as of May 4<sup>th</sup>