



Mel
Ryan
School

DREAM IT. BELIEVE IT. ACHIEVE IT.

Response to Ireland's Education for Sustainable Development Strategy to 2030 Consultation Paper





We are grateful for the opportunity to respond to the Government of Ireland's Consultation Paper on Ireland's ESD to 2030 Strategy. In our submission we hope to demonstrate the value and importance of addressing the social factors impacting young people today. We aim to do this by targeting education of the psychological system.

This document is submitted by Naomi Wardle MSCSI, MRICS and Mel Ryan on behalf of;

Mel Ryan School,

Blackrock, Co. Dublin

www.melryanschool.ie

melryanschool@gmail.com

Ph: 086 8372364 - Mel Ryan

Background to the Mel Ryan School

Founded in 2011, with just two students, Mel Ryan began teaching life skills, (including communications skills, building confidence, resilience, emotional intelligence and empathy) through the medium of the arts. The school rapidly grew and, having enhanced the lives of hundreds of children and teenagers over a ten year period, today has over 500 students, operating from seven venues in South Dublin. Mel, along with her team of nine staff, is still passionate about instilling this valuable training, particularly in the current mental health crisis, and reaching as many young people as possible. During the school closure (due to Covid 19) Mel and two of her team invested in research and training for the development of a new programme for the school. This programme will offer health education and resilience training to primary and secondary schools across the country.

The iheart Programme (Innate Health Education And Resilience Training)

We, at the Mel Ryan School, are the first to bring the iheart Programme to Ireland although it is now well established in the UK and in 18 other countries around the world. This programme has been accredited by the UK Department of Education's International Quality Standard for the delivery of high-quality Information, Guidance and Advice (IAG). A relatively new curriculum, founded in 2018, iheart has had a significant impact globally. A recent study completed by Youthsight in January 2021 measures the significant impact of the programme to date (see appendix 1).

iheart is a preventative-based early intervention approach to providing a baseline education of how the psychological system works. Having a better understanding of how our minds work, and how others work, facilitates improved communication and understanding, allowing for reduced conflict, improved empathy, improved resilience and the confidence to respond to situations appropriately.

The programme is interactive and carefully structured. It explores topics that affect young people's daily lives, such as stress, anxiety, future uncertainty, relationships, prejudice, self-image, bullying, anger, addictions and social media. We use a scaffolded approach to learning, each session has its own clear learning objective and a dynamic blend of interactive discussions, activities, self-reflection and video clips. The key messages are continually reinforced week on week, which allows the children to gain a deep understanding of the content.

When we understand how our psychological system works, we have a better understanding of how we think and feel, and how other people think and feel. We can better understand their perspective, their behaviour and are better equipped to deal with adversity; it gives us the resilience to access innate wellbeing regardless of what is going on around us or happening to us. Understanding, expressing and managing our own emotions and understanding the emotions of others builds our emotional wellbeing and emotional intelligence as the essence of emotional intelligence is self-awareness, empathy and compassion. This understanding empowers young people to realise that they have everything they need inside of them to navigate their world and cope with whatever challenges are ahead of them.

Three of the Mel Ryan School team are trained to facilitate the programme (Mel Ryan, Astrid Courtney and Naomi Wardle). As facilitators we host each session in person on a weekly basis, the entire curriculum comprises 11x1hr weekly sessions aimed at 10 to 17 year olds.

Approach to learning

The programme avails the four core learning profiles within pedagogy;

- Auditory; through the use of carefully designed and edited video clips, which features a mix of real life situations and character based storytelling
- Tactile/ kinaesthetic; each session incorporates an element of movement, for example one class uses playdough to represent our ability to create our own reality- another session uses jenga blocks to demonstrate over-thinking
- Visual; the programme uses analogies and symbols, for example a poster of the sun is used as an analogy to help us understand that our wellbeing is innate
- Reading & writing; throughout the programme the use of worksheets, questionnaires and feedback reports give children the opportunity absorb information by reading/ writing

This approach allows for a transformational learning experience; as it leads to a profound change in our thoughts, feelings, perspectives and behaviours. It facilitates a radical shift of consciousness that permanently alters our way of being in the world and facilitates the development of synaptic pathways, continually building over the 11 week programme.

We know that the most efficient way of remembering is to “say as you do”- putting learning immediately into action. The iheart programme promotes role plays and real life situations to build self belief. If a child can believe that they can do it, it's a major predictor of whether or not the learnings are transferred.

Evidence and support

The evidence supporting the impact of iheart's approach in strengthening the mental health of young people are presented in multiple formats;

- Self-reporting surveys administered pre- and post-programme
- Responses to qualitative research questions
- Voluntary in depth interviews
- Case studies

iheart commits to building upon a robust evidence base, demonstrating the efficacy of the work through the measurement of the impact of the iheart programme.

Some other programmes lack feasible impact or improvement on mental wellbeing due to gaps between implementation and sustainable integration. The emphasis on mental wellbeing requires a focus of the core cause of psychological discomfort as opposed to the symptoms. The iheart programme methodologically instigates a process for participants to uncover their innate resilience which provides the potential for a lifelong solution.

iheart implements 3 key principles that educate young people on the workings of our psychological system;

1. Prevention (versus crisis intervention)
2. Mental wellness (versus mental illness)
3. Education (versus raising awareness/ acute treatment)

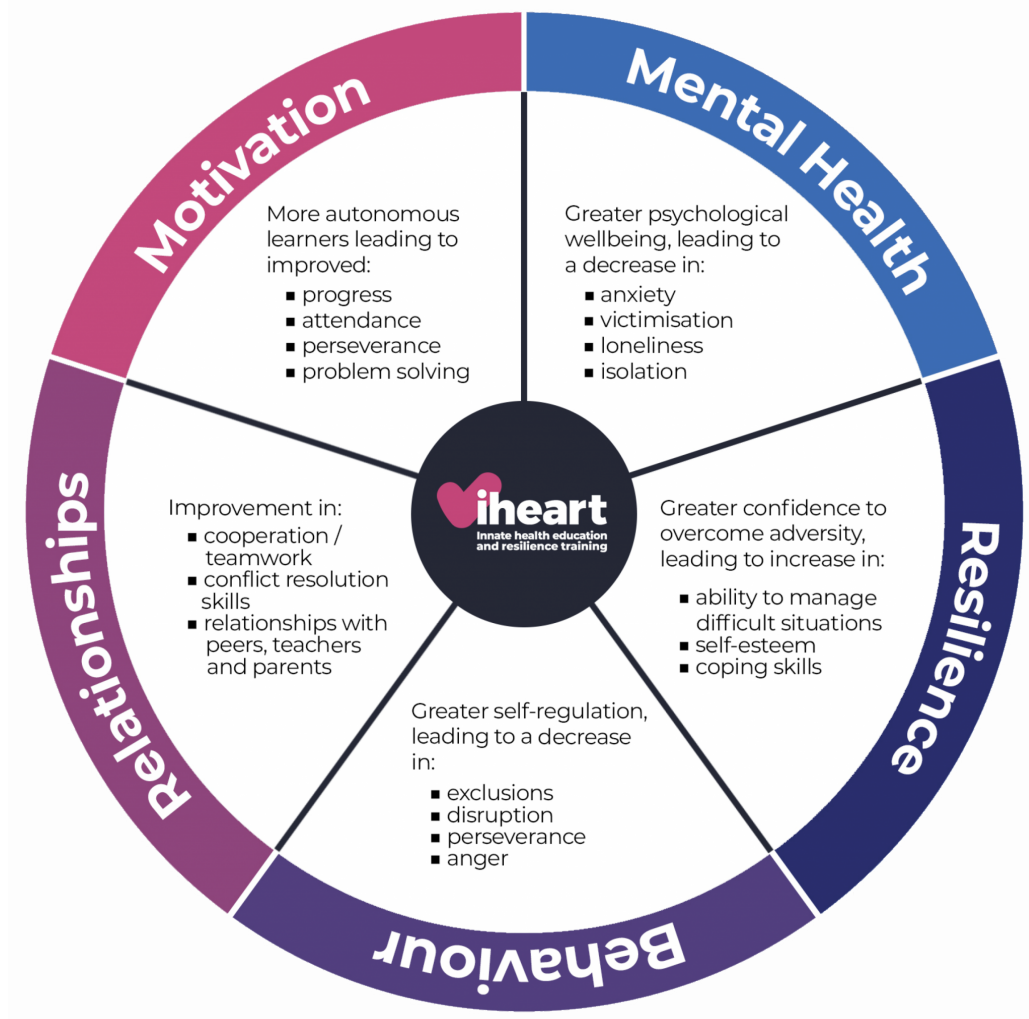
A recent publication of an academic paper in the Journal of Public Mental Health “Evaluation of the iheart mental health education programme on resilience and wellbeing of UK secondary school adolescents” was co-authored by leading academics Professors Anthony Kessel and Thomas Kelley, and Doctors Andrew Solomon and Rosalyn Collings, with assistance and input from members of the iheart team, Charlotte Monnickendam and Brian Rubenstein.

The purpose of this paper was to present the findings of a preliminary study conducted two years ago based on the iheart Programme for Young People to a cohort of secondary school pupils from across several schools in the UK. The study observed that taken together, the quantitative and qualitative results are highly encouraging, highlighting how key mental wellbeing indicators such as impulse control and emotional resilience provided positive findings. The paper concluded that "iheart may be a promising new intervention offering a step change in mental health education for improving resilience, mental wellbeing and the ability for participants to navigate psychological challenges."

Impact and Outcomes

Based on the iheart Impact & Outcomes Framework, we can expect to see the following improvements in the lives of young people we work with;

- Mental Health
- Resilience
- Behaviour
- Relationships
- Motivation



A complete review of the research and findings of the evidence of these outcomes is documented on the iheart website; www.iheartprinciples.com, however the most compelling evidence is a recent study (undertaken by Youthsight, the largest research agency in the UK specialising in young people, dated Jan 21), which shows that although a typical young person's mental health and resilience has worsened during the pandemic, the mental health of those who have taken part in the iheart programme actually remains stable. Pupils have managed to take their learnings from iheart and apply them to these unprecedented, extraordinary times, and in some cases has returned mental health levels back to pre-pandemic levels." (See appendix 2.)

Further information and evidence about the programme are available on both www.iheartprinciples.com and www.melryanschool.ie websites. On the homepage of the iheart website there is a short video which is excellent in encapsulating what the programme offers.

Research

The importance of social development is documented in the Consultation Paper, and this is further supported by evidence and objectives set out by the Department of Education, the National Council for Curriculum Assessment, NEPS and WHO, which we summarise below for reference;

The White Paper on Education sets out the core aims, principles and policies for the Irish Education System, and it states that the aim is to; "Nurture a sense of personal identity, self esteem and awareness of ones particular abilities, aptitude and limitations, combined with a respect for the rights and beliefs of others to create tolerant, caring and politically aware members of society. To ensure that Ireland's young people acquire a keen awareness of their nation and European Heritage and Identity, coupled with a global awareness and a respect and care for the environment, through the development of key skills such as;

- Being personally effective
- Communicating
- Critical and creative thinking
- Working with others
- Managing myself
- Staying well.

The National Council for Curriculum and Assessment states that; "Across the developed and the developing world schooling finds itself at the centre of a set of global concerns about the future of the planet, about food and water security, and about the movement of peoples in the face of climate disasters. The global economic crisis adds to these concerns and increasingly, schools are being asked not simply to teach students about these issues but to shape the next generation of creative problem solvers who can quite literally, 'save the world'." (Innovation and Identity, Ideas for the new junior cycle, NCCA, 2010).

NEPS Wellbeing Policy Statement and Framework for Practice 2018-2023 Advises that “there is overwhelming evidence that children and young people learn more effectively if they are happy in their work, believe in themselves and feel supported” It also states that “wellbeing is comprised of many interrelated aspects including; being active, responsible, connected, resilient, appreciated, respected and aware”

The World Health Organisation states that “wellbeing is present when a person realises their potential, is resilient in dealing with the normal stresses of their life, takes care of their physical wellbeing, and has a sense of purpose, connection and belonging to a wider community.”

We believe that the implementation of the iheart programme in schools can help to meet some of the core aims and objectives set out above.

What's next?

As previously mentioned, our school is the first to bring iheart to Ireland. We aim to deliver the programme to our students in our own school, and we are in discussions with a number of schools in our locality to identify if there are any opportunities to deliver this programme during the school day. However, we have two main challenges;

Recognition and support from the Department of Education

There are many programmes that are currently being marketed to schools. While these may be valuable additions to children's education, it is our belief that this specific programme is fundamental to a young person's development. Therefore we strongly believe that this programme should be supported by the Department of Education and if possible that time should be allocated in the curriculum to accommodate it.

Programme Cost

In order to facilitate the iheart programme in schools there is a cost associated with it, which covers the time spent in the classroom by the facilitators, the resources used in class, necessary technology and materials. Some schools will be in a position to pay for this, however many will not. We strongly believe that this programme should be available to all children, and that cost should not be a barrier to this fundamentally important education. Therefore assistance in the form of funding would allow for a more advanced roll out of the programme.

Further information

Should you have any further queries regarding this programme we would be happy to have the opportunity to discuss this further with you.

Please feel free to contact Mel Ryan on 086 837 2364.

Appendix 1: Youthsight Study on behalf of iheart

Appendix 2: iheart curriculum content

Appendix 3: Evidence and impacts of iheart programmes



curriculum outline

Session One

Welcome to iheart – a new way of understanding your mind

Session Two

Our psychological system is an intelligent system

Session Three

We have everything we need inside!

Session Four

The mechanics of how our psychological system works

Session Five

I feel stressed & anxious – no wonder I am so unmotivated

Session Six

I can't stop worrying about the future

Session Seven

Can we think differently and still get along?

Session Eight

Labels are for Jars, not for people

Session Nine

Help, I'm being bullied! Help, I can't control my anger!

Session Ten

I can't stop using my phone! Am I addicted?

Session Eleven

Summing up my iheart journey





iheart:

Programme evaluation

January 2021

 **iheart YouthSight**

Executive Summary



COVID-19 has resulted in a deterioration in school pupils' mental health over the past year.

On the whole, the post-iheart wave saw pupils' emotions stabilise and start to recover from the rapid drop since the pandemic.

At a time where pupils are extremely vulnerable to mental health issues, the iheart programme has helped pupils manage their emotions despite the current stressful and tough times. iheart has also empowered young people with confidence in their ability to access their resilience in difficult times.

Who is YouthSight?

We are an award-winning research agency.

We help our clients become more impactful through actionable **Gen Z** and **Millennial** insights.

As our clients generally struggle with how to measure long-term sustainable impact of their programmes, activities and services, we work with them to gain insights by embracing fresh trends, understanding youth culture and trusting our knowledge of youth audiences.





Contents:

Sample and methodology	5
The context	7
iheart's impact on pupils	14
Case studies and teacher testimonials	25
Learnings from this research	30

Sample and Methodology

Methodology

A 4-minute online survey was carried out before pupils took part in the iheart programme (pre-wave).

The same survey was then carried out once pupils had finished the iheart programme (post-wave).

We asked:

- How often different emotions are felt
- Ability to problem-solve and cope in stressful situations
- Motivation at school
- Cohesion with peers/teachers at school

Sample

The sample was obtained through iheart, from their partner schools.

We surveyed:

- A sample of 416 pupils in the pre-wave* and 254 pupils in the post-wave
- Pupils were either in Year 6, 7 or 8 from schools in Greater London

*We originally surveyed a sample of 530 in the pre-wave, but owing to COVID-19 interruption, we surveyed 254 pupils in the post-wave, from 6 of the 15 participating schools. We therefore could only include the schools where over 50% took part in the post-wave.

Control sample

We used a control group as a baseline general population measure of wellbeing in March 2020, using the same pre/post-wave questionnaire.

We surveyed:

- A sample of 524 Year 5 - Year 11 school students
- Pupils were from schools across the UK

As the control cell was carried out before the Covid-19 pandemic, it provides us with a baseline of pupils' wellbeing before the pandemic.

Students completed the 10 sessions comprising the iHeart programme

Session 1: Welcome to iheart

What is iheart and why is it helpful

Session 2: Intelligent systems

Our psychological system is reliable, predictable, intelligent and amazing

Session 3: We have everything we need inside!

Our wellbeing is built-in; nothing can give it to us

Session 4: How our amazing psychological system works

Thinking arises within our psychological system and is brought to life as our feelings

Session 5: Stress & Anxiety - barriers to motivation and learning

No one and no thing have the power to take away our wellbeing and make us feel stressed, anxious or worried

Session 6: Worrying about the future

As we know that a future event cannot take away our wellbeing, worrying about it makes less sense

Session 7: Can we think differently and still get along?

As everyone experiences their own thinking - separate realities - we can see things differently and still be friends

Session 8: Labels are for Jars!

As we are not born with a self-image, identity or label, we are so much more than we think

Session 9: Cyber bullying, bad behaviour & anger

As no one and no thing can take away our wellbeing - not even a bully - we are psychologically safe

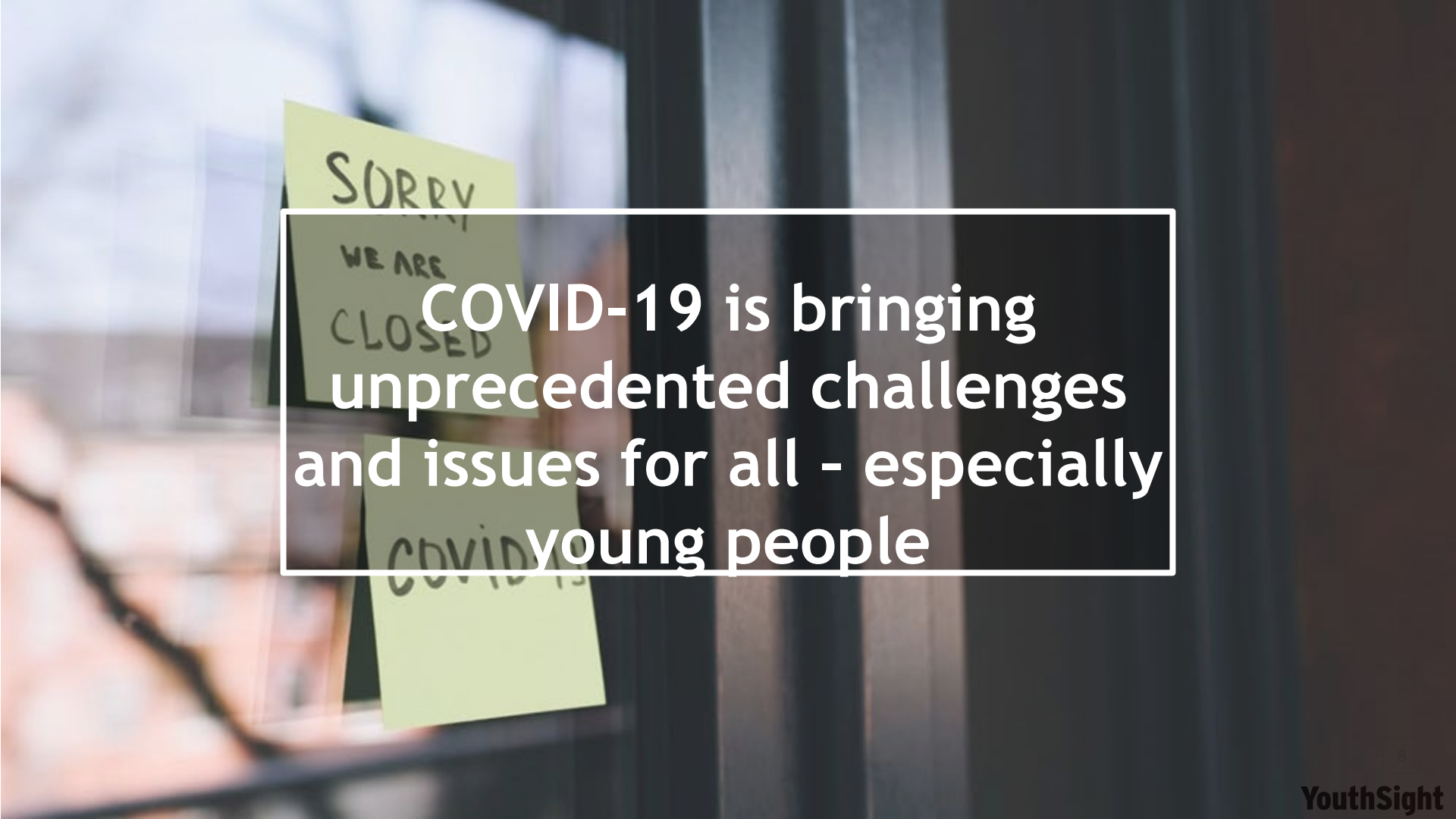
Session 10: Breaking habits and addictions

When we attach our wellbeing to something else, we feel compelled to engage in certain behaviours to get relief from a bad feeling or to get a better feeling



The context



A hand is holding a white rectangular sign with a black border. The sign contains the text "COVID-19 is bringing unprecedented challenges and issues for all - especially young people" in white, bold, sans-serif font. In the background, there are several yellow sticky notes attached to a dark surface. One sticky note says "SORRY", another says "WE ARE CLOSED", and a third says "COVID-19".

**COVID-19 is bringing
unprecedented challenges
and issues for all - especially
young people**

Fieldwork was carried out during the pandemic - a stressful and worrying time for all

The fieldwork was carried out during the uncertainty of Covid-19, including a second lockdown in England and the rise of the second wave. At this time, schools were facing increasing pressure to close their doors yet again, just as they'd reopened.

This was unquestionably a stressful and worrying time for all, especially young people.



Covid: 'No logic' to keeping schools open in London



Covid: keeping England's schools open 'will lead to another lockdown'

Education unions call for schools to shut and university teaching to move online

20th March:
The first national lockdown - schools close and online learning is implemented for the first time.

September:
New school year starts. After months of online learning, schools open their doors again.

31st October:
Four week lockdown announced in England. Schools remain open.

19th December London and much of the South and East of England moved to Tier 4. Christmas policy U-turn. Pressure to close schools amounts.

March - June

July - August

September

October

November

December

Control group fieldwork
Early March
(before lockdown)

Pre-iHeart fieldwork
Early October

iHeart programme (10 weeks)

Post-iHeart fieldwork
Early/mid-December

Years 6,7 and 8 are key transitional years in 'normal' times, but this year they are facing even more upheaval

The typical pupil's mindset at the start of their first term (September)

Year 6s are excited about finishing primary school and moving onto the next chapter of their lives at secondary school

Year 7s are excited about starting their first year in secondary school, making new friends and meeting new teachers

Year 8s are also looking forward to a new school year, no longer being the youngest in the school

The typical pupil's mindset during Covid-19 at the start of their first term (September)...

Year 6s feel uncertain about what the next chapter of their lives could look like; will secondary school be virtual or in person when it's their turn?

Year 7s are being thrown into the new environment of secondary school, and are experiencing heightened levels of stress, uncertainty & behavioural issues

Year 8s, have been separated from their school friends and experienced a lockdown summer of isolation

Children are not just having their education stripped away - not being at school has a wider and potentially lasting impact too



SAFEGUARDING: School is a safe space for young people. An estimated **160,000 children are living in households where domestic abuse is taking place**. Children may be confined to a home which is not a safe place for them. Online safeguarding is also an issue as more children spend time online in lockdown - **79% of children (12-15) had potentially harmful online experiences over a year**.



DISRUPTED ROUTINE: **Disrupted routines can cause distress** for those suffering from anxiety, eating disorders and other mental health difficulties. School is an important source of support for many young people, as well as being a **respite and providing structure** for those who have a difficult time at home.

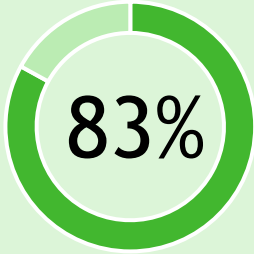


DIET AND EXERCISE: Despite the government giving out food vouchers, there are concerns that households on particularly low incomes **will struggle to provide a good standard of nutrition**. Prior to the lockdown, 50% of children regularly took part in some extracurricular sporting activity and many more were active through school. We are likely to see an **impact on children's mental health as a result of reduced exercise and poor nutrition**.



DIGITAL DISPARITY: Around **7% of children do not have access to a fixed broadband connection**, and 2% do not have any access to the Internet at home. This means they will **struggle to access any online learning tools**, and **struggle to keep in contact with friends and family**, further impacting mental health.


During a global pandemic, wellbeing and resilience is really being challenged, making iheart more important now than ever



of young people have said the **Coronavirus pandemic** has made their **mental health worse**



A **quarter** of young people who were accessing mental health support before the crisis are **no longer receiving it**



“It couldn’t be more pertinent than now to teach kids about wellbeing and resilience” - Teacher at Elmgrove School

Navigating such unprecedented times, we would expect young peoples' mental health to deteriorate

Therefore, ensuring mental health remains stable at such a challenging time is of great value and would be seen as a very positive result right now.

iheart's impact on pupils





Throughout this section we will be looking at 3 different waves of data:

1.

Control (pre-Covid)

This was carried out in March 2020, **before the pandemic** amongst the general population of Year 5-11 pupils.

The control data acts as a pre-Covid baseline, measuring how the pandemic has impacted pupils' emotions and behaviours and how in turn, the iheart programme may have helped stabilise emotions and return them back to pre-Covid levels during this turbulent time.

2.

Pre-iheart

This was carried out at the **very start of the iheart programme**, to measure pupils' wellbeing before the programme.

3.

Post-iheart

This was carried out at the **very end of the iheart programme**, to measure pupils' wellbeing at the end of the programme.

Comparing this to pre-iheart and the control data, we can see the impact the iheart programme has had.

Some context to keep in mind when reading this presentation...

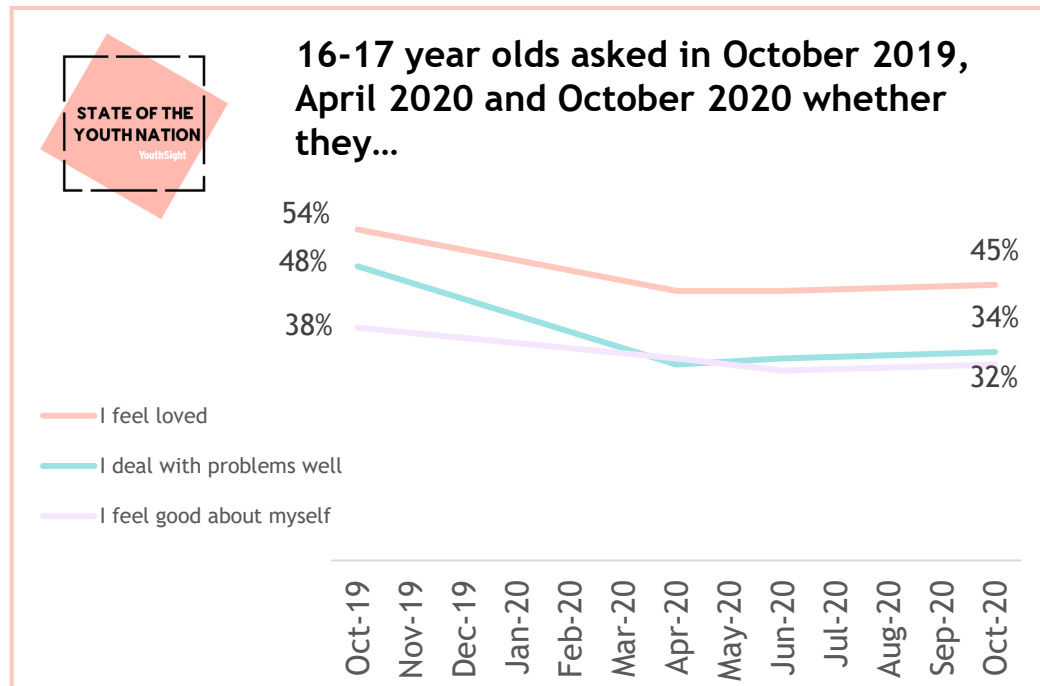
While there are less uplifts from some of the quantitative findings after iheart, it is essential to remember that:

- We were in the middle of a global pandemic during fieldwork.
- Students missed out on a significant amount of time at school in the last year and when they returned there were still concerns over whether they would remain open.
- As a result, students have not developed at their usual rate and have felt unsettled and stressed throughout.

You will also see that some emotions and behaviours were more positive during Covid (in the pre-iheart wave), compared to before Covid (in the control group wave). But remember:

- In-person school had resumed when the pre-iheart wave was carried out.
- For many pupils, after a significant period of remote learning, going back to school felt like normality had returned - they had routine in their lives and got to see their friends every day.
- This is likely to result in a surge in positive emotions when returning to school initially.

Our youth tracker shows that young peoples' mental resilience and wellbeing has declined



Using our State of the Youth Nation tracker data, we know that a typical **young person's mental health and resilience has worsened** since the UK went into lockdown.

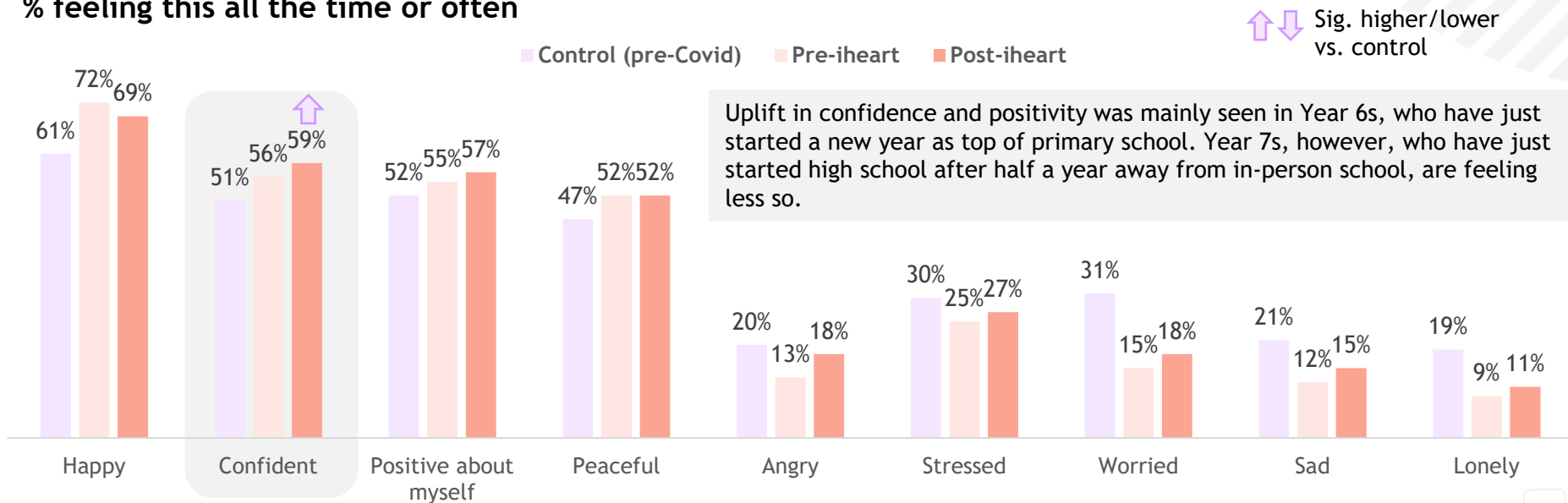
Yet, you will see that the mental health of those who have taken part in the **iheart programme actually remains stable.**

Pupils have managed to take their **learnings from iheart and apply them** to these unprecedented, extraordinary times.

Despite such confusing times, pupils' levels of positive emotions have remained high post-programme

It may seem surprising that confidence levels, positivity about themselves and peacefulness had actually seen a rise since pre-Covid, however this may be explained by the fact that normal school had resumed again at the start of the iheart programme. Pupils were able to see their friends every day and have routine after a prolonged period away - it took them back to a sense of normality. Positively, despite lockdown continuing, iheart has maintained those feelings and confidence and feeling positive about themselves have even surpassed pre-Covid levels.

% feeling this all the time or often

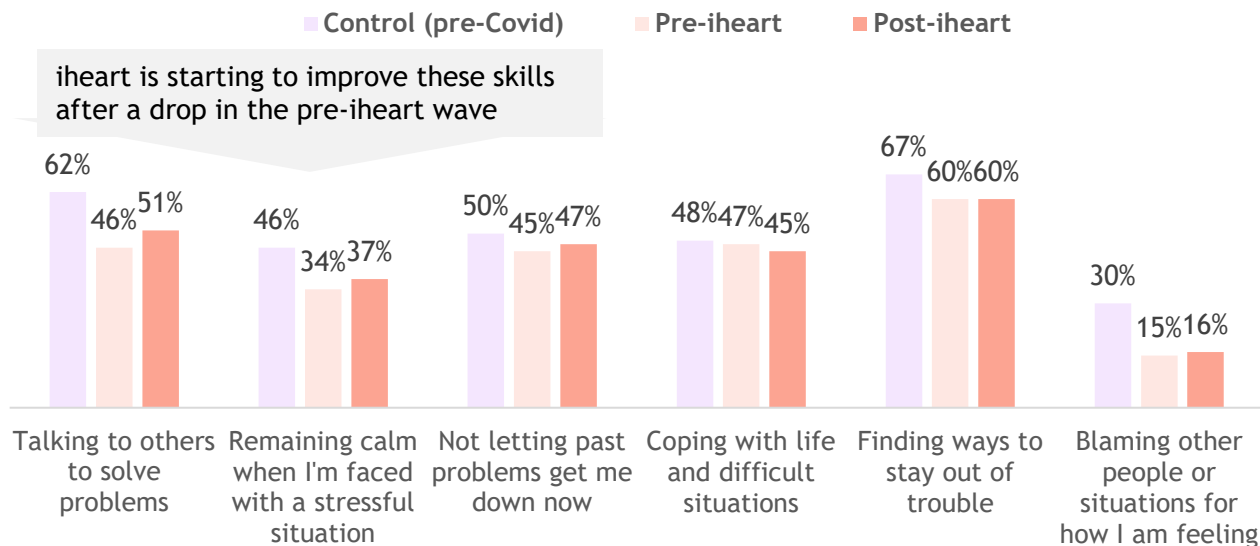


Q4. Please select the option that best describes how you have felt over the last week.
Base: Total sample. Control (524), pre-wave (416), post-wave (254)

Despite COVID-19 giving rise to difficult and stressful circumstances, pupils are managing to remain calm

As you might expect, pre-Covid, pupils were better at remaining calm, talking to others to solve problems and finding ways to stay out of trouble. But when pupils came back to school for the first time in months in the pre-iheart wave, they didn't feel they were as good at these skills. Looking at the post-iheart data, the programme has prevented these skills further deteriorating at a time when they easily could and has started improving them.

% feel they are good/very good at this



As of October 2020, according to our State of the Youth Nation tracker, **only 34% of 16-24s said they are able to deal with problems well**

17% of pupils in the post wave said they were *very good* at remaining calm when facing a stressful situation, compared to 11% pre-iheart.

"Now when me and my brother argue, instead of getting angry or not talking to him I can tell him how I feel calmly and we can move on quickly"
Pupil, Christ College Finchley

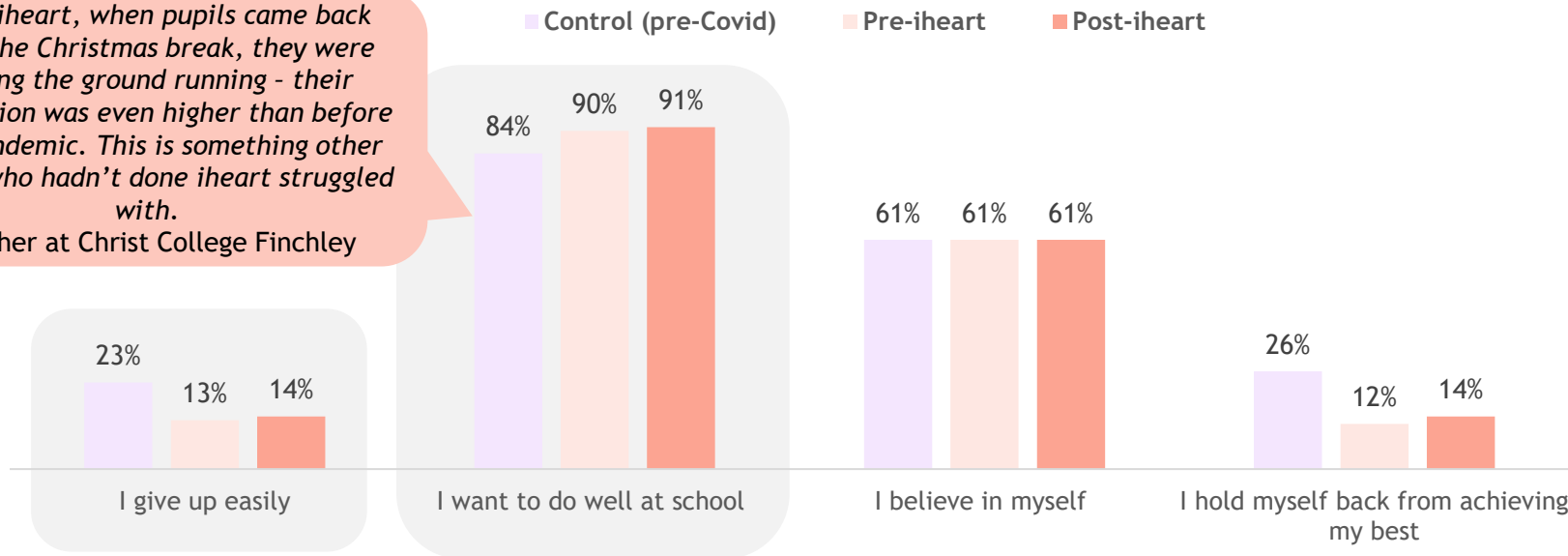
Despite the prolonged upheaval of COVID-19, pupils are still motivated to do well in school

In the pre-iheart wave, it was great to see that pupils returned from an extensive period physically away from school feeling motivated to do well and determined not to give up. iheart has successfully maintained their motivation levels as the term progressed. In fact, wanting to do well and not giving up is higher post-iheart than it was before the pandemic.

% feeling this all the time or often

After iheart, when pupils came back from the Christmas break, they were hitting the ground running - their motivation was even higher than before the pandemic. This is something other pupils who hadn't done iheart struggled with.

Teacher at Christ College Finchley

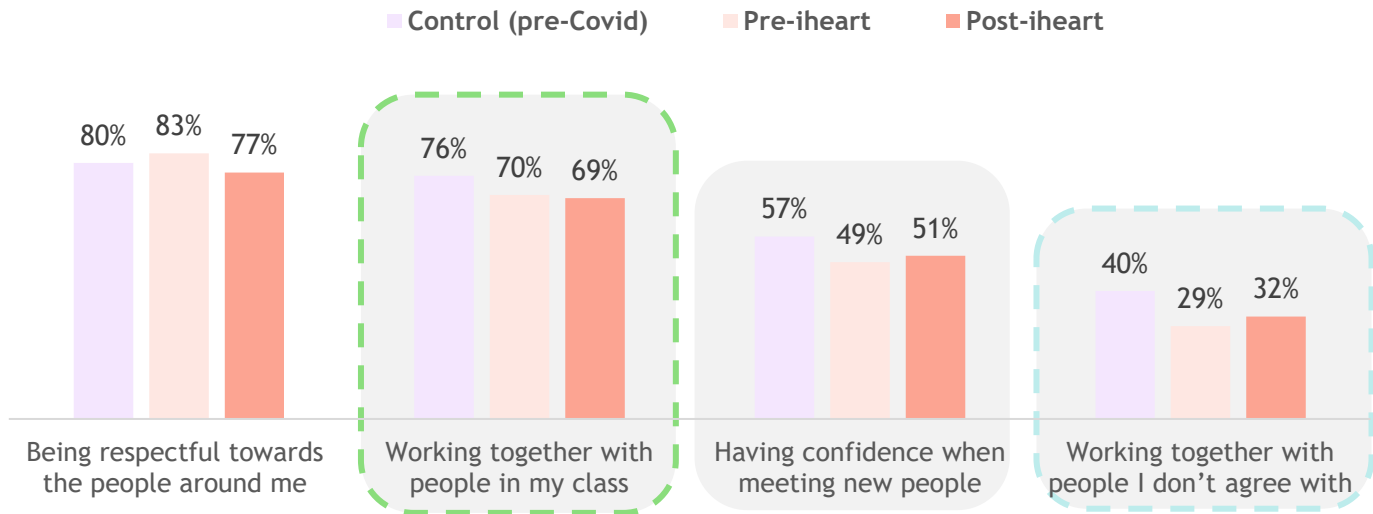


Q5b. Please select the option that best describes how you feel about yourself
Base: Total sample. Control (524), pre-wave (416), post-wave (254)

Students are more likely to be very good at working together with others, even those that they don't agree with

We saw a drop in the proportion of pupils excelling in working together and having confidence meeting new people when pupils returned back to school in the pre-iheart wave. It's reassuring to see that iheart has prevented further deterioration in these areas; in fact we see an improvement in those saying they're very good at working together with others, including those they don't agree with.

% feel they are good/very good at this



33% of pupils post-wave said they were **very good at working together with people in their class** (compared to 25% pre-wave)

13% of pupils post-wave said they were **very good at working together with people they don't agree with** (compared to 6% pre-wave)

Q5d. How good or bad do you think you are at the following things?
Base: Total sample. Control (524), pre-wave (416), post-wave (254)

Pupils feel iheart has helped them with their confidence, problem-solving and ability to remain calm...

*It made me feel like I was a new person because I was upset first due to the fact that I was lonely, but after my iheart session, I felt **confident about myself and I believed in myself**. - Year 6/P7, Mulgrave Primary School*

*I feel a lot **more confident about myself** after completing the programme because now known that no-one can put a feeling in me and most importantly everyone has separate realities meaning **we can all have different opinions** about everything - Year 6/P7, Mulgrave Primary School*

*I feel so much better because before I used to get so angry easily but after a few sessions of iheart I **learnt how to keep calm** and hold in my emotions. - Year 6/P7, Mulgrave Primary School*

*I feel good and it will help me in life to **solve lots of problems** - Year 6/P7, Akiva School*

*iheart has made me feel way better about myself and **when faced with tough situations I feel I can cope better**. - Year 6/P7, Akiva School*

*It's **improved my mental health** and I get sad much less now. I know how to use my mind and thoughts in a good way; this was a great experience. - Year 8, Christ College Finchley*

*I feel much better than I felt before because before I would always doubt myself and I feel like I'm never good enough, but **now I'm happy about myself**. - Year 8, Christ College Finchley*

Case studies and teacher testimonials



CASE STUDY: Akiva School

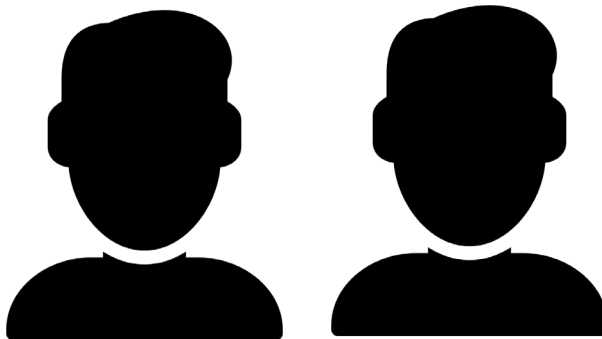
We interviewed 2 children from Akiva School who shared the impact iheart has had on them...

iheart successfully encouraged Alfie* to audition for his school's Talent Show. He used iheart's teachings to overcome his anxiety towards auditioning, remembering that he does not need to worry what others think of him.



Ben* has been using iheart learnings when he finds himself in arguments. He remembers that no one can put a feeling in him or get him down. He also knows that opening up to his emotions is the key to solving disagreements.

"Instead of always being afraid to do something, I now take the opportunity to do things - iheart has helped me understand that its good to give things a go and not to feel worried about what people think."

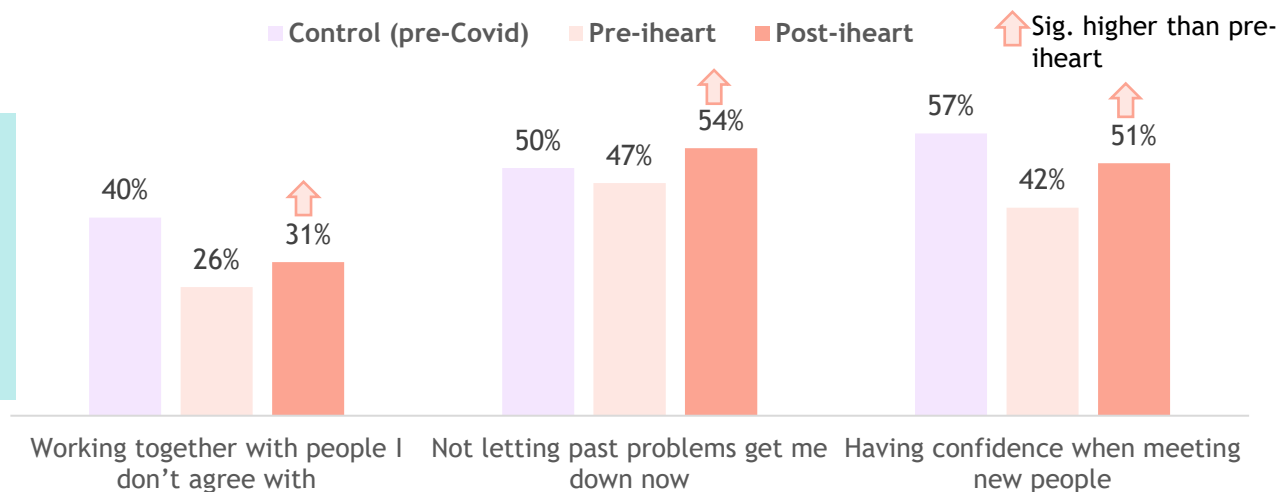


"Before iheart, I wouldn't open up at all and I would be very close minded, so I would just stay angry. Now I am more open to other people's opinions and ideas if I'm arguing with them".

CASE STUDY: Christ College Finchley



In Christ College Finchley, we have seen particular **uplifts** in areas such as **confidence and resilience**.



"iheart is a very special programme; it really brings to life abstract concepts in a simple way with analogies.

Every lesson has a purpose and pupils know why they're there. I've certainly noticed that pupils are much more mature and resilient, especially during challenging time like the present." - Teacher at CCF

Emma* has noticed that her class is talking more and getting on much better since doing iheart together and there is less disruption.

Sarah* found herself getting into lots of arguments with her friends. Since completing iheart, she now knows it's okay if everyone doesn't agree with her and that doesn't mean they don't like her.

* Names have been changed for anonymity

Q5d. How good or bad do you think you are at the following things? Q5a. How good or bad do you think you are at the following things? Q5c. Please select the option that best describes how you feel about yourself. Base: Christ college sample. Control (524), pre-wave (160), post-wave (131)

From listening to teachers, we know that...

1 Pupils **clearly understand** every part of the iheart programme as each lesson links back to the 'why'. Pupils are **engaged throughout**, especially during more practical activities such as with the play-doh and balloons.

2 Although teachers were not able to see the long-term impact due to lockdown, they still noticed immediate **behavioural changes**. They can recall times where they **solved problems with students** by using the principles of the iheart programme.

3 The iheart programme not only helps pupils, it also **helps teachers** enhance their understanding of emotional wellbeing and resilience. The programme **establishes a common dialogue between teacher and student**, allowing for **better communication**.

*"The programme is **well-structured** and teaches abstract ideas in a very **accessible** way."* - Head Teacher at Langley Park Boys

*"The children were **captivated from day one** and that's hard to do with a class of Year 6s."*
Teacher at Elmgrove Primary


*"iheart could not have been more **pertinent right now** - pupils were able to **deal with lockdown better** and saw it for what it was and responded to it with such a **high level of maturity**."* - Teacher at Christ College Finchley

Teachers told us anecdotes about how they saw the direct impact of the iheart programme...

*"We have one student who was having a really difficult time, reaching crisis point 3 or 4 times a day and the police had to be involved. This year, **since being on the iheart programme there have been no incidents**, no police involvement. He is **much better at communicating his emotions**, when he's at crisis point he will find one of us and talk to us."* - Teacher at East Barnet School

*"We had a very angry Year 11 pupil who was often getting into trouble. He was having **1-2-1 iheart lessons** and I saw a massive improvement - he was **much calmer and more engaged in class**. I'm also better at handling the situation and **iheart teachings flash through my head too**."* - Head Teacher, Langley Park Boys

*"I've noticed that the **class as a whole are getting along** much better. They're more **open to discussion** and aren't as shy - they know that disagreeing is okay and nobody can control how they feel."* - Teacher at Christ College Finchley



Notably, **teacher testimonials show an improvement** in their pupils' behaviours .

It could be said that **teachers' perspectives are more accurate in judging pupil's behaviours**, whereas self-reflections from students are better suited to describing their own feelings.

Learnings from this research

Pupils have gone through a turbulent year and have faced uncertainty about their future throughout the pandemic and this research.

In such trying times, iheart has proved itself as a successful preventative programme. It has prevented young peoples' wellbeing from negatively spiralling, and in some cases has returned mental health levels back to pre-pandemic levels. This level of resilience in pupils as a result of the programme is a huge success given facing the challenges we are currently facing.

iheart is particularly succeeding in instilling:

Resilience

Pupils are showing positivity, calmness and the ability to problem-solve when faced with difficult situations. This is likely to equip them well for challenges faced even beyond the pandemic.

Motivation

Pupils returned back to school raring to go after months of virtual school and a lockdown Summer. They wanted to push themselves to do well at school and iheart ensured this motivation continued to remain high.

As the term progressed and there was increasing news about schools closing, motivation held strong in these uncertain times as a result of iheart.

iheart should now focus on:

Improving cohesion amongst pupils

It is understandable that pupils are feeling more agitated and distracted the longer lockdown continues, therefore preventing this from manifesting in the form of troublesome behaviours is an area iheart should specifically work on with the pupils.

Improving cohesion between pupils and teachers

The fragmented nature of school and not being used to the classroom environment may have resulted in a rocky relationship between pupils and teachers.

Given schools are back to online learning again, it's likely that pupils and teachers have missed opportunities to form strong relationships. Therefore, it's important that iheart can teach pupils how to build and repair relationships with teachers again.



THANK YOU

Research@YouthSight.com



Evidence & impact of **iheart** programmes

September 2020



iheartprinciples.com

Contents

Introduction: The global mental health crisis	3
Executive summary	5
Overview of iheart programmes	7
iheart programme for young people (ages 10-18)	8
- Curriculum overview	9
- Programme reach	9
- Summary of programme Impact	10
Wellbeing course for teachers/educators	15
Whole school wellbeing strategy	18
Building an evidence base for the iheart approach	20
iheart Impact and outcomes framework	20
YouthSight research report: Summary of iheart programme evaluation (June 2020)	23
Conclusion	28
References	29
Appendix A:	
The iheart curriculum for young people – Descriptive paper	30
Appendix B:	
Case study: Havelock School, England	42

Introduction

The global mental health crisis

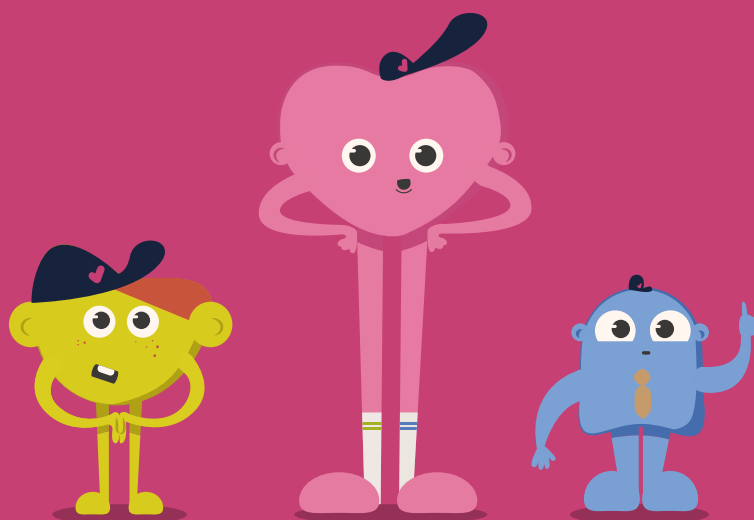
There is a mental health crisis enveloping our young people. Depression is a leading cause of illness and disability among adolescents, while suicide is the second leading cause of death in 15-29-year olds (WHO, 2020). Clearly, increasing access to mental health support for adolescents worldwide is a priority, yet barriers to accessing treatment include a lack of existing mental health services, disjointed dissemination of information and lack of scalable programmes. Significantly, the prevailing focus regarding young people's mental health is on raising awareness and crisis intervention, as opposed to prevention and education.

Research focusing on resilience-promoting interventions in young people indicates a dramatic shift from solely focusing on the child to a multilevel approach which takes into account the fact that the child's main environments are between home and school (Matsopoulos and Luthar, 2020). Adopting a holistic approach to the wellbeing of young people is based on understanding the importance of creating a multisystemic

resilience framework that includes parents, family, teachers and school leaders (Twum-Antwi et al., 2019). Teacher wellbeing is also a priority in the current environment as teachers are reporting high levels of stress, anxiety and depression. This is the leading cause of teacher sickness in England, contributing to over two million days of sickness absence a year in pre-Covid conditions (Department of Education, 2019). Moreover, teacher wellbeing is essential to support students and is an interchangeable dependency that mental wellness programmes need to encompass in their strategy implementation (Brady and Wilson, 2020). Existing research indicates that school-family partnerships offer a more consistent integration of wellbeing strategies which influence and improve the wellbeing of our children (MacArthur et al., 2018).

Comparatively, different approaches such as mindfulness-based interventions (MBI), provide alternative techniques for people to apply to their lives to improve their coping skills or to simply manage their experience. However, recent reviews of literature argue that MBI often lacks feasible impact or improvement on the mental wellbeing of young people due to noticeable gaps between implementation and sustainable integration of such programmes (Emerson et al.,2020).

Taking this empirical evidence into account, it is identified that the emphasis on mental wellbeing requires a focus on the core cause of psychological discomfort as opposed to the symptoms. The iheart programme methodically instigates a process for participants to uncover their innate resilience, which provides the potential for a lifelong solution to wellbeing regardless of the circumstances. The next section will share more information on the iheart programme.



Executive summary

iheart (innate health education and resilience training) addresses the mental health crisis facing our youth through the implementation of key principles that educate young people on the workings of our psychological system. This approach focuses on three unique differentiators: 1) **Prevention** (as opposed to crisis intervention); 2) **Mental wellness** (as opposed to mental illness); 3) **Education** (as opposed to raising awareness and acute treatment).

iheart is highly committed to building a robust evidence base demonstrating the efficacy of its approach. The purpose of this document therefore is to present summary findings of the burgeoning evidence supporting the impact of iheart's unique approach in strengthening the mental health of young people. These are presented in multiple formats including results from self-reporting surveys administered pre- and post-programme, responses to qualitative research questions, and voluntary in-depth interviews (all of which have been filmed). A case study describing the impact of iheart in a London primary school provides key data outcomes and exceptional results for a highly vulnerable, behaviourally challenged cohort of 60 children aged 9 or 10 years old. Summary findings from in-depth interviews with teachers and school leaders provide further context on the impact of the iheart programme on young people. High-level results from all the above measures indicate

significant progress in developing emotional resilience, working with others, managing bullying behaviour, dealing with loneliness and depression, as well as reducing school exclusions and improving classroom behaviour.

An important addition is reference to research funded by a National Lottery grant carried out by Youthsight Research Agency of 1000 young people across 15 UK schools. While this study was interrupted by Covid-19, a six-month interim report provides evidence of the iheart approach in maintaining resilience and wellbeing as the initial impact of a global pandemic was starting to be felt.

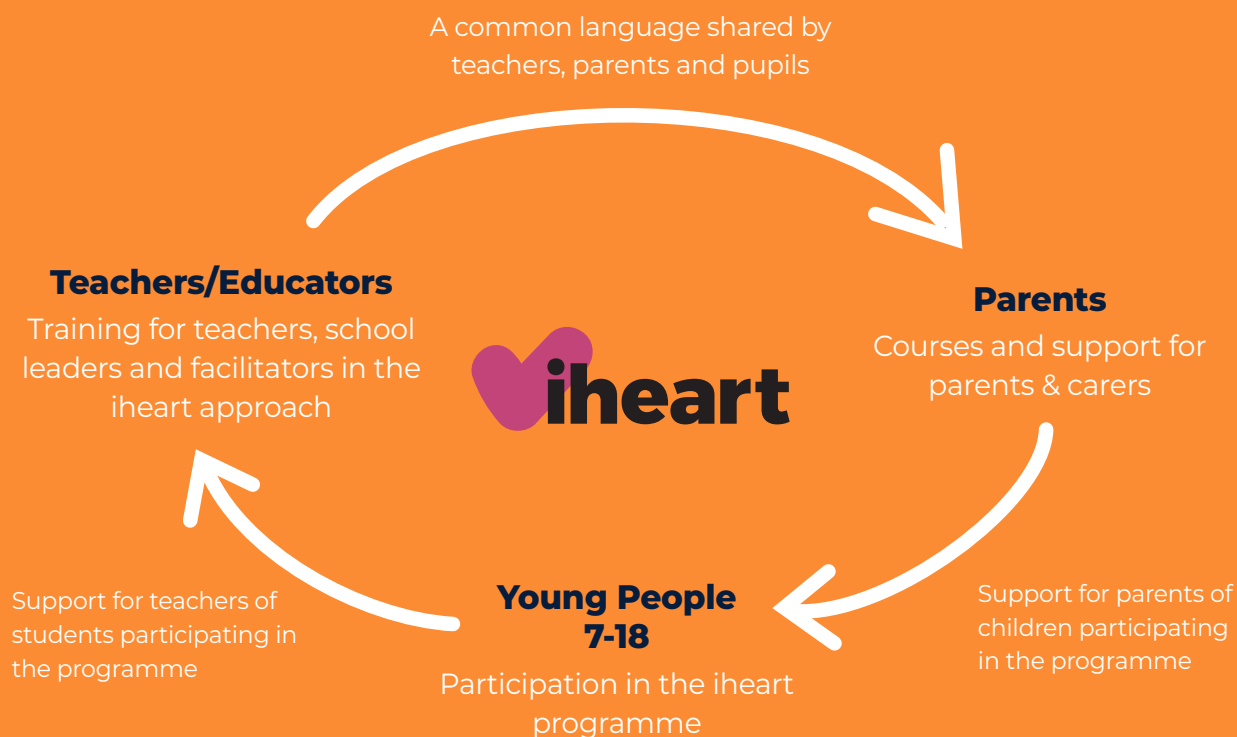
Importantly, the evidence base considers evaluation of the iheart programme against the iheart Impact & Outcomes Framework, which segments results into the following salient categories:

- **Resilience**, e.g. improved self-esteem, confidence to deal with setbacks, coping skills.
- **Mental Health & Wellbeing**, e.g. less anxiety, stress, depression, addictive behaviours.
- **Motivation**, e.g. better attendance, perseverance, problem-solving, attainment.
- **Behaviour**, e.g. self-regulation; less exclusions, disruption, anger, aggression.
- **Relationships**, e.g. greater tolerance, respect for difference, teamwork, positive relationships.

In addition, findings are explored from the iheart Wellbeing Course for Teachers/Educators, which is an important element of iheart's broader whole school wellbeing strategy. Reference is made to results from a recent study of 60 schoolteachers in Scotland, whereby participants self-reported significant improvement in managing anxiety, stress, returning to work post-lockdown.

An overview of iheart programmes is important for understanding the impact of the approach. The primary intervention occurs through

delivery of the iheart Resilience Curriculum to young people aged 10-18, in schools and other educational/youth settings. This is outlined in the following section and in greater detail in Appendix A, which serves as a supplementary descriptive paper to a research article recently accepted (subject to revision) by the Journal of Public Mental Health. This paper, co-authored by four published academics, assesses the efficacy of the iheart programme amongst UK secondary school pupils and presents promising initial findings.



Overview of iheart programmes

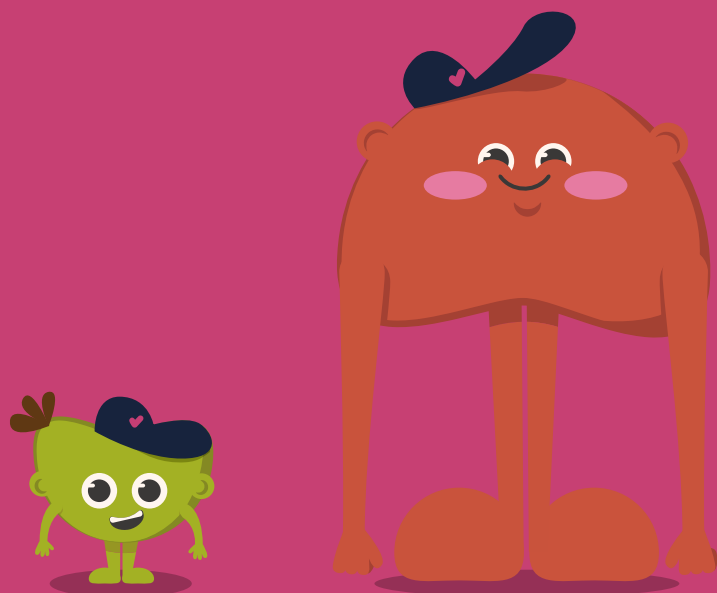
iheart is a registered charity whose mission is to help young people uncover their innate resilience and mental wellbeing. iheart's preventative mental health education provision includes specifically designed programmes for young people, teachers/educators, parents, youth leaders and communities. Programmes can be engaged as separate courses, or strategically implemented, such as in the context of iheart's broader whole school wellbeing strategy.

Experiential sessions invite participants to uncover their innate resilience to realise their wellbeing, regardless of their circumstances. This core idea is introduced at the beginning of each session through an exploration of the 'Big Idea', which opens discussions on the possibility that: **"we have everything we need inside of us"**. This statement, which expresses the fundamental belief that psychological wellness is innate to all people, underpins the educational approach of the entire iheart programme.

Once participants understand and relate to this foundational concept, the evidence-based learning consistently confirms that mental health issues such as anxiety, depression, self-harming, and hostility are far less likely to recur, and, even when they do, their adverse impact is significantly reduced. The iheart approach integrates foundational knowledge of our psychological system, which is explained to children and young people in a simple, easily digestible and dynamic way. This methodology penetrates through the symptoms of mental ill health directly to the root cause and is a fundamental differentiator between iheart as preventative education and many other interventions.

iheart programme for young people (ages 10-18)

The iheart Programme for young people is comprised of 11 x 50-minute group sessions. The first four sessions lay the foundations of the iheart approach, explaining the underlying principles of our psychological system and their most significant implication – that wellbeing is innate. The following seven sessions relate to topics that affect young people's daily lives, such as: stress, anxiety, future uncertainty, relationships, prejudice, self-image, bullying, anger, addictions and social media. Built on a scaffolded approach to learning, each session has its own clear learning objective and a mix of interactive discussions, activities, self reflections, summary slides, animations, videos and group exercises.



Curriculum overview

Session 1	Welcome to iheart – a new way of understanding your mind
Session 2	Our psychological system is an intelligent system
Session 3	We have everything we need inside!
Session 4	The mechanics of how our psychological system works
Session 5	I feel stressed and anxious – no wonder I am so unmotivated
Session 6	I can't stop worrying about the future
Session 7	Can we think differently and still get along?
Session 8	Labels are for jars, not for people
Session 9	Help, I'm being bullied! Help, I can't control my anger!
Session 10	I can't stop using my phone! Am I addicted?
Session 11	Summing up my iheart journey

Please see Appendix A for more detail and the learning objectives for each session:

Programme reach

Across the globe, the volume of iheart programmes delivered continues to grow and expand.

On a global scale, since January 2018 over

5000

young people have participated in iheart

235

school teachers & staff trained in iheart

249

facilitators have trained in iheart

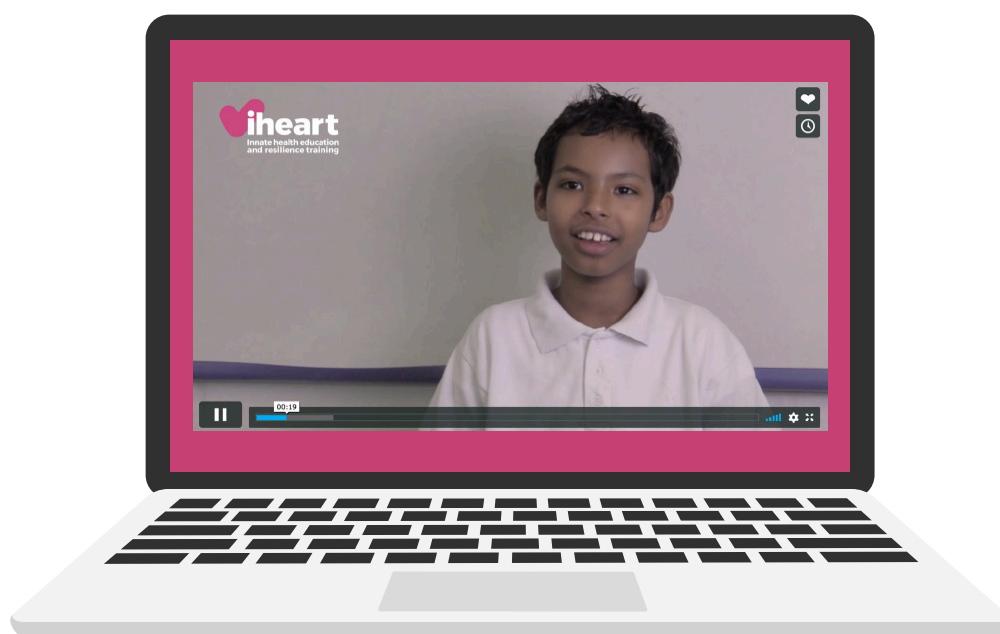
105

schools & educational institutions have run iheart

Summary of programme impact

The following section demonstrates results from various pre- and post-programme impact measures.

In the clip below, 35 students from an inner-city London primary school who participated in short voluntary video interviews, describe the changes they saw in themselves after taking part in the programme.



[Click here](#)

to watch a sample of the interviews

The same students completed a post-iheart intervention questionnaire at the conclusion of the course. They were asked to write down changes in themselves, what they learned and if they would recommend it to others.

100%
would recommend
the iheart
programme to
others

98%
noticed a positive
change in themselves
following the iheart
programme

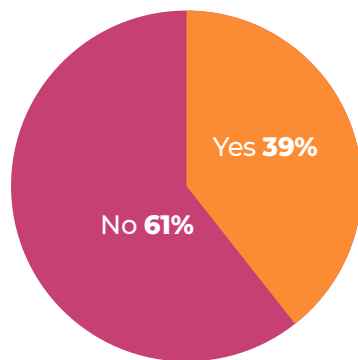
Psychometric pre-iheart and post-iheart questionnaire results

The same pupils also answered questions anonymously on a Likert Scale and were only required to circle their answers pre and post the iheart programme.

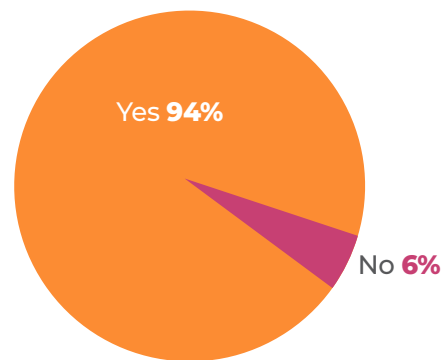
Pre-iheart intervention, 39% of pupils reported that they could work well with their classmates. This group **increased to 94% post-iheart intervention.**

(Havelock School Case Study, 2020; Note that the full study is included in Appendix B.)

I work well with my classmates



Pre - iheart intervention

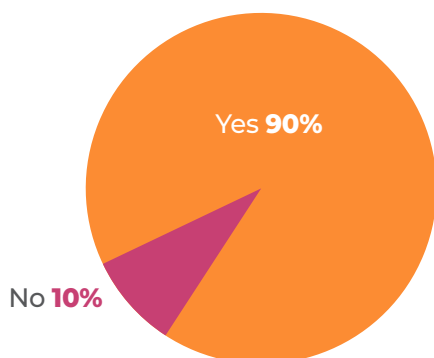


Post - iheart intervention

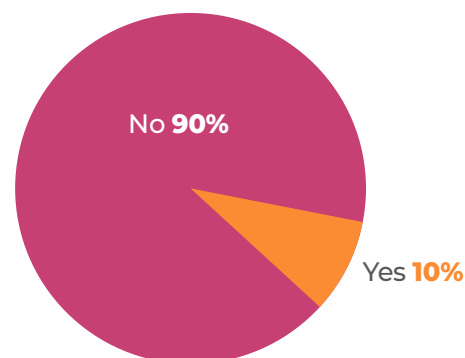
Post-iheart-intervention, there was a significant decrease in the attribution of feelings (i.e. victimisation) being caused by circumstances, reflecting **significant increase in levels of emotional resilience.**

(Havelock School Case Study, 2020; Note that the full study is included in Appendix B.)

My feelings are caused by my circumstances



Pre - iheart intervention



Post - iheart intervention

Results from SEMH school

Bromley Beacon Academy (BBAB) offers Key Stage 4 provision for pupils with SEMH (Social Emotional Mental Health) needs. Almost all the pupils are considered significantly disadvantaged (90% of the cohort are on Pupil Premium). Outcome data below is based on the school's behavioural measurement system. In comparison to comparable dates the previous year regarding the Year 10 cohort (who participated in the iheart programme in the summer term, 2019):

- **55%** reduction in Fixed Term Exclusions (FTE's)
- **59%** reduction in days of education lost through exclusion
- **75%** are on track/exceeding expected attainment progress

“

This has shown that this cohort of students have had a significant shift in their behaviour and attitude towards school as a result of the IHEART programme. Their presentation when in school has also improved.

”

- Rani Chahal

Assistant Headteacher, BBAB

Results from primary school in Harrow, London

(Note: this school was under special measures at the time of the iheart intervention.)

An internally evaluated programme, delivered to 90 Year 6 pupils, January – March 2019, using the participating school's classroom management tool, reported:

- **A decrease from 11% to 3% in negative classroom behaviours**, including: disruption, refusing, homework issues, shouting-out and non-participation.
- **Positive improvements** included academic progress, concentration, on task and perseverance.

Responses from 67 completed anonymous surveys by pupils reported that:

- **100%** noticed a change in themselves at the end of the programme
- **99%** would recommend the programme to a friend



They (the children) have gone on this journey; they are starting to believe in what they can achieve, and they will go on to be better adults making the world a better place in the future, thanks to the partnership between all we've done with iheart and our school...

- Sash Hamidi

Executive Headteacher



Collective results from 4 London schools

Based on 192 anonymous pre and post programme surveys, **1 out of 2 children** (aged 10-14 from 4 different schools) noted that they are better able to deal with:



loneliness



being bullied



their problems



feeling depressed

Wellbeing course for teachers/educators

iheart's Wellbeing Course for Teachers/Educators is comprised of 8 x 90-minute sessions focusing on strengthening personal resilience and wellbeing. It is wellknown that teachers and school staff are experiencing high levels of stress, anxiety and depression resulting in a high level of turnover or sick leave (Brady and Wilson, 2020). The Wellbeing Course for Teachers/Educators was designed to respond to this issue and also to introduce school staff to the iheart approach as part of a broader, whole school wellbeing strategy.

This course has made a very positive impact on participants' wellbeing and resilience, as demonstrated by results from a recent study of 60 schoolteachers in Scotland. All participants completed a pre-course questionnaire, as well as weekly surveys providing 'In the moment' qualitative and quantitative data.

The data showed clear impact for the teachers/educators: Conclusions

At the end of 4 weeks the data indicated a significant change in the following:

- **56%** improvement in dealing with stress
- **51%** improvement in dealing with worry
- **43%** improvement in dealing with anxiety
- **55%** improvment in managing work/life balance
- **44%** improvment in ability to manage the return to the workplace during the easing of Covid-19

Results - Qualitative

“

The course made me think about my abilities to deal with challenging situations and is starting to impact my personal and professional life in a positive way.

- L Creaney, PT

”

“

I now feel better equipped to think logically and make positive decisions for myself and others.

- M Watson, DHT

”

“

I'm still concerned about Covid-19 and returning to work...but it's no longer having the same impact on my wellbeing.

- J Gentles, PT

”

“

Life changing!

**- M Ramsay,
PT Pupil Support**

”

The weekly questionnaire asking participants the following key questions:

Week 1 Teacher/Educator Questionnaire

At the end of this week how do you rate the following qualities within yourself?

	1 - Not at all	2	3	4	5 - Very
Hopeful					
Resilient					
Contented					

At the end of this week how would you rate your ability to deal with the following?

	1 - Not at all	2	3	4	5 - Very
Difficult situations					
Past events					
Workload and demands					
Work/life balance					

At the end of this week how would you rate your ability to deal with the following?

	1 - Not at all	2	3	4	5 - Very
Stress					
Worry					
Anxiety					
Return to workplace post Covid-19					

What new insights did you have about our psychological system? (open-ended)

Whole school wellbeing strategy

Early evidence generated by the whole school wellbeing strategy provided by iheart, indicates that it is having an impact on building a culture of greater resilience, wellbeing and mental health across the broader school environment.

The iheart programme creates a common dialogue in the home and school that encourages a new level of communication based on the following realisation.

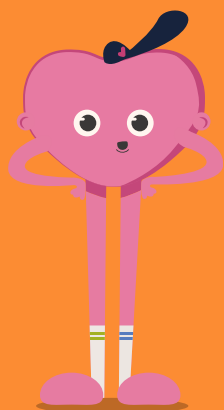
“

No one and no thing can
put a feeling in you.

”

(iheart Curriculum for Young People, 2019)

Overall, the evidence continues to inform school leaders and policy-makers that programmes such as iheart are invaluable in building a better learning environment by improving the wellbeing of the key players responsible for children's development (*Matsopoulos and Luthar, 2020; Brady and Wilson, 2020*).



Become an iheart school

Uncovering resilience and wellbeing
across the entire school community.

Helping meet RSHE requirements in schools

Testimonials from iheart schools

“

The best decision we made was for our teachers to be trained in iheart. I would say to all headteachers: 'Put the iheart programme in your curriculum review and make sure you have time-tabled it!'

”



Rani Chahal

Assistant Head of School; Behaviour Support Manager,
Bromley Beacon Academy

“

As a Trust of schools, we believe that developing an overarching, sustainable culture of wellbeing and resilience is crucial for supporting pupils and staff to be the best they can be by implementing the iheart programme.

”

Mr. Julian Appleyard

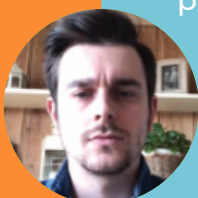
OBE, CEO of Pontefract Academies Trust



“

I fundamentally believe that every single school should be taking part in the iheart programme. It really does help to equip young people as well as the staff that are trained to deliver and facilitate the iheart programme. It is silently changing lives day by day and is a very worthwhile cause to get involved with.

”



Arron Poole

Head of Year 9 Christ's College Finchley

Building an evidence base for the iheart approach

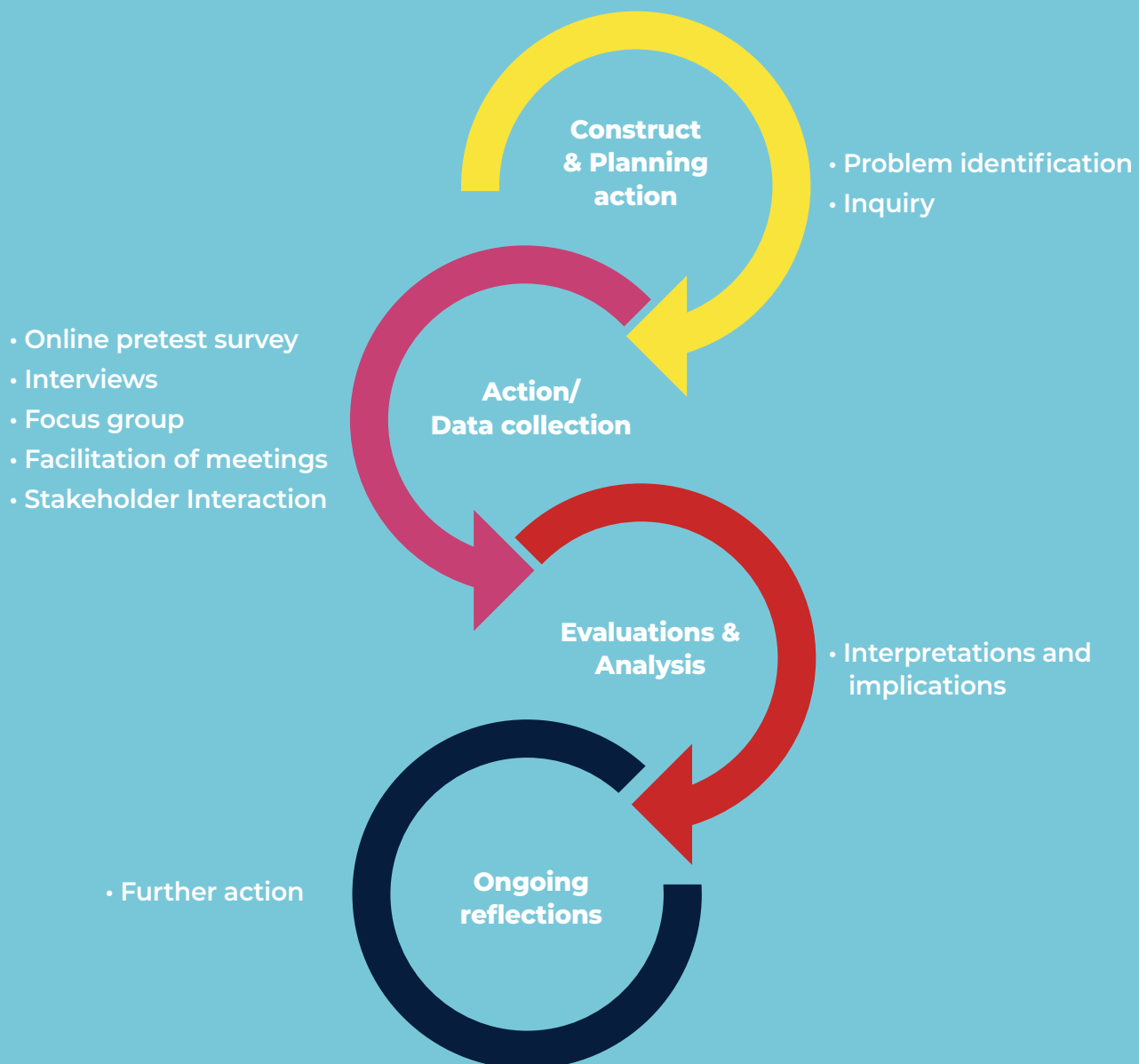
iheart impact and outcomes framework

The iheart Impact and Outcomes Framework assesses the following improvements for young people:

- **Resilience**, e.g. self-esteem, dealing with setbacks, coping skills.
- **Mental Health & Wellbeing**, e.g. less anxiety, stress, depression, self-harm, addictive behaviours.
- **Motivation**, e.g. progress, attendance, perseverance, problem-solving & attainment.
- **Behaviour**, e.g. self-regulation, exclusions, disruption, anger, aggression.
- **Relationships**, e.g. tolerance, respect for difference, teamwork, positive relationships with teachers, peers and family members.

Feedback from young people, educators, parents and facilitators is an important component informing iheart's iterative programme design and development. Specifically, iheart uses ongoing inquiry and critical reflection based on action research cycles for quality organisational improvements to inform the iheart Outcomes and Impact Framework (*Bradbury, 2015*).

Action research cycle for evaluation of iheart programmes



Summary and explanation of primary themes and trends found from quantitative and qualitative analysis

(Havelock Primary School, 2020)

Improved Resilience

The improvement in impulse control led to the cultivation of self awareness, self-regulation and building emotional boundaries.

Many children who had been previously bullied no longer felt upset by others' actions and were even able to calm down other pupils who felt anger. This in turn helped to create a collective change within the school atmosphere as pupils learnt from each other, became less judgemental and more compassionate.

Improved Mental Health & Wellbeing

The biggest trend was the reduction in worry and anxiety. There was also a decrease in fear and sadness.

The teachings in emotional regulation provided tools to pupils to reduce their stress during exam periods.

The overall increase in wellbeing was reflected by the fact that all participants, without exception, recommended the programme for their peers.

Reduction in Behavioural Problems

The biggest transformation was the reduction in anger and bullying behaviour.

Participants grasped one of the programme's salient learning points: that other people's emotions should not affect their own and therefore they did not need feel the need to react violently.

Improved Motivation & Classroom Behaviour

Children experienced improved concentration and behaviour during class, helping them to focus more on their work and become less distracted by their peers.

Pupils developed an increase in confidence which in turn improved their classroom participation; many of the quieter pupils participated more by raising their hands more frequently, whilst others who had previously struggled to make friends or work together found themselves able to create better friendships.

Improved Relationships

Relationships improved amongst peers, siblings and parents.

There was a discernible increase in empathy amongst peers creating a collective shift in relationships and behaviour.

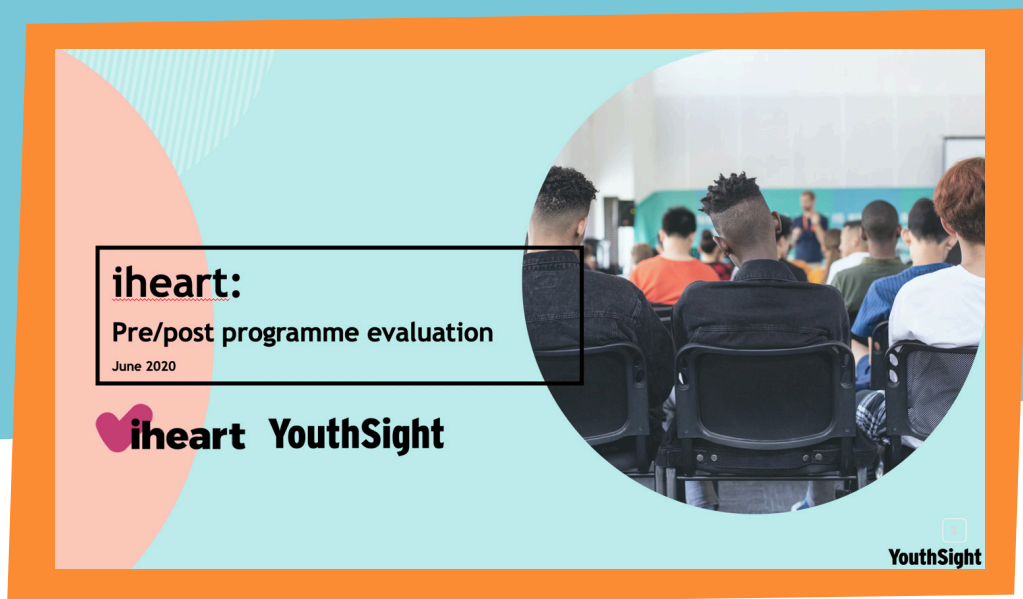
Participants took their teachings home and taught their siblings and parents about dealing with anger and not needing to fight back when family members and peers became angry with them.

YouthSight research report

Summary of iheart programme evaluation (June 2020)

Youthsight, an award-winning research agency, was commissioned via a National Lottery grant to conduct an extensive study of 1000 young people who had participated in the iheart Programme from 15 schools across the UK. Unfortunately, this study was interrupted by the Covid-19 pandemic. However, highlights from an interim report assessing impact on a smaller number of pupils who did manage to complete post-programme questionnaires prior to schools closing, is conveyed below.

This data compares the same group of pupils before they had taken part in the iheart programme and after they have taken part. The pre-iheart data acts as a baseline measure of pupils' emotional wellbeing and resilience. From here, movement has been measured for pupils since having taken part in the iheart programme.



The iheart programme has prevented pupils' mental health from deteriorating in challenging times

YouthSight Research Agency

Positive emotions have remained high postprogramme and confidence has actually increased.

YouthSight Research Agency

Teachers told us anecdotes of how they saw the iheart programme's impact in practice...

“

We have one student who was having a really difficult time, reaching crisis point 3 or 4 times a day and the police had to be involved. This year, **since being on the iheart programme there have been no incidents**, no police involvement. He is **much better at communicating his emotions**, when he's at crisis point he will find one of us and talk to us.

Teacher at East Barnet School

”

“

A boy who would **sit at the back and be a nuisance**, over time **started to show an interest**, his ears pricked up as if he thought maybe this is something he can get into.

Teacher at Elmgrove Primary

”

“

I had a group of girls that constantly bickered between them, they'd tell me their worries and **we referred back to iheart and how to deal with those emotions** and we found that **very helpful**.

Teacher at Elmgrove Primary

”

Notably, teacher testimonials show an improvement in their pupils' behaviours.

Objectively, teachers' perspectives are more accurate in judging pupil's behaviours, whereas self-reflection from students are better suited to their own feelings.

From listening to teachers, we know that...

1. Pupils **clearly understand** every part of the iheart programme, and are **engaged throughout**, especially during more practical activities such as with the play-doh and balloons.

“

My teaching style has changed. I use a lot of iheart approaches, especially when children are struggling.

Teacher at East Barnett School

”

2. Although teachers were not able to see the long-term impact due to lockdown, they still noticed immediate **behavioural changes**. They can recall times where they **solved problems with students** by using the principles of the iheart programme.

“

The children were **captivated from day one** and that's hard to do with a class of Year 6s.

Teacher at Elmgrove Primary

”

3. The iheart programme not only helps pupils, it also **helps teachers** enhance their understanding of emotional well-being and resilience. The programme **establishes a common dialogue between teacher and student**, allowing for **better communication**.

“

Over the weeks the language from the iheart programme was definitely used more by the children.

Teacher at Elmgrove Primary

”

Here is what pupils had to say about the iheart programme...

“

I feel like a **new person** in a good way. I can now agree with people and understand more about our separate reality. This programme **physically and mentality helped me** in life.

”

“

I feel really happy doing this programme since it **has boosted my confidence** in many areas. Also I feel like it makes me think more than I usually do and I have **become more curious**. Thank you for the opportunity I have really enjoyed it.

”

“

I feel **empowered** because now I have the right to tell myself that it is not true and this is just my thought, not what I see.

”

“

I feel confident and I **don't get sad** if anyone calls me a name because my **feelings come from thought**.

”

“

I feel happy because before I felt that I wouldn't pass my SATs but now that heart is here I **feel way more comfortable about thought and feeling**, also the main thing I feel is the most important.

”

“

I feel really **calm** after every lesson.

”

“

I would feel **relaxed and calm** because iheart taught me so much stuff about how to keep calm and also how to remain calm even though something frightens me.

”

Learnings from this research.

1. The fact that the data shows that mental health has remained stable shows that iheart is a successful preventative programme.

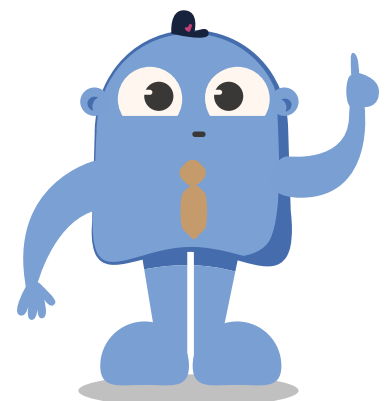
iheart teaches resilience - if mental health is not deteriorating at a time where it would be expected to, it shows that pupils are remaining resilient to the challenges they may be facing in life.

2. Make the most of school data, in addition to self-reported data.

Pupils may struggle to self-report certain negative behaviours such as getting in trouble, therefore using teachers and school data is a more objective and therefore more insightful.

3. It's about how pupils are managing their negative emotions.

We see in our data that pupils said their stress and anger levels increased, however looking at their behaviours they say they are able to cope in difficult situations and get along well with others. Pupils may feel negative emotions, but their behaviours indicate how well they can manage these emotions.



Conclusion

The data-led iheart programme provides empirical evidence that this approach to mental health education is proving impactful on young people and teachers/educators. As a result, there is an increased demand for an effective mental wellbeing programme that reaches beyond awareness to educating participants how to confront depression, loneliness, anxiety, low self-esteem, self-harming, bullying, conflict, and addictive behaviour.

iheart is experiencing significant growth and expansion in several countries in response to this increased demand. Consequently, in addition to the UK, the iheart Academy has trained facilitators who are now delivering programmes in countries as diverse as Australia, Canada, Finland, Israel, Ireland, New Zealand, Norway, South Africa, Spain, Sweden, Switzerland, UAE, and the USA, all less than three years since launching the Academy.

The global expansion is part of iheart's vision to create a paradigm shift in mental health education and youth work, so that all young people learn to uncover their innate wellbeing and potential to become resilient, contributing members of society. This is achieved through embedding a sustainable and scalable solution via expanded delivery of iheart programmes to young people.

The iheart programme is continually being adapted and further developed to meet the needs of different target beneficiary groups including younger children, parents, and school, youth and community leaders. This includes planned launches of the Wellbeing and Resilience Course for Parents in November 2020; the Junior Curriculum for Children (ages 6-9, in the first quarter of 2021); and an array of additional online and printed resources for educators, schools and organisations.

A commitment to building a robust evidence base demonstrating the efficacy of our work through the measurement of the impact of iheart programmes is ongoing. This will be reflected and updated on a regular basis in future reports, while learnings and adaptations based upon this commitment will continue to inform our approach to research and evaluation.

References

- Bradbury, H. (2015) *The Sage Handbook of Action Research*. 3rd ed. London: Sage.
- Brady, J. and Wilson, E. (2020) '*Teacher wellbeing in England: teacher responses to school-level initiatives*', Cambridge Journal of Education, [Online]. DOI:10.1080/0305764X.2020.1775789 (Accessed: July 6, 2020).
- Emerson, L., Nabinger de Diaz, N., Sherwood, A., Waters, A., Farrell, L., (2020) '*Mindfulness interventions in schools: Integrity and feasibility of implementation*', International Journal of Behavioral Development, 44(1), pp. 62- 75, [Online]. DOI: 10.1177/0165025419866906 (Accessed: July 5, 2020).
- Twum-Antwi, A., Jefferies, P., and Ungar, M. (2019) '*Promoting child and youth resilience by strengthening home and school environments: A literature Review*', International Journal of School & Educational Psychology, 8(2), 78-89, [Online]. DOI:10.1080/21683603.2019.1660284 (Accessed: July 5, 2020).

Appendix A

The iheart curriculum for young people

Descriptive paper

The approach

iheart, which stands for Innate Health Education and Resilience Training, has developed a preventative mental health educational programme for young people aged 10-18. The current paradigm of mental health education mostly focuses on mental health awareness, however iheart differs in its unique approach in the following ways:

- **Prevention**, as opposed to crisis intervention
- **Mental wellness**, as opposed to mental illness
- **Education**, as opposed to raising awareness and acute treatment

Measurement and impact

The iheart Impact & Outcomes Framework assesses the following changes for young people:

- **Resilience**, e.g. self-esteem, confidence, dealing with setbacks, coping skills
- **Mental Health & Wellbeing**, e.g. less anxiety, stress, depression, addictive behaviours
- **Motivation**, e.g. progress, attendance, perseverance, problem solving & attainment
- **Behaviour**, e.g. self-regulation, exclusions, disruption, anger, aggression
- **Relationships**, e.g. tolerance, respect for difference, teamwork, positive relationships with teachers, peers and family members

The principles

The iheart Principles describe how the human psychological system is an intelligent system based on a clear logic that explains the source of all feeling states, emotions and felt experiences. This system has wellbeing built into it and is always working in a logical way, which enables human beings to self-correct and reconnect with their innate wellbeing. As with all systems, such as the ecosystem, there is a constant, reliable, universal and predictable nature to how the psychological system operates.

The programme is underpinned by an overarching question of enquiry: Do you think someone, or something is putting a feeling in you? The answer to this question acts as a metaphorical compass, guiding participants to understand if they are on track or off track. On track can be understood as having logical thinking (i.e. when we do not attach our wellbeing to someone or something and therefore do not believe that they can put a feeling in us). Off track can be understood as having illogical thinking (i.e. when we do attach our wellbeing to someone or something and therefore believe that they can put a feeling in us). The implication of being off track is significant; when we think that someone or something can put a feeling in us, it means we have outsourced our wellbeing and overlooked the fact that it is innate. The iheart Principles therefore explain and highlight how all people have innate wellbeing inside of them.

The iheart curriculum

The iheart Curriculum (referred to as a 'programme' when being delivered), is a structured mental health education course comprised of eleven sequential sessions. The first four sessions lay the foundations of the iheart approach, explaining the underlying principles of our psychological system and their most significant implication – that wellbeing is innate. The following seven sessions relate to important topics that affect young people's daily lives, such as stress, anxiety, future uncertainty, bullying, anger, relationships, prejudice, addictions and social media. Built on a scaffolded approach to learning, each session has its own clear learning objective and a mix of interactive discussions, activities, selfreflections, summary slides, animations, videos and group exercises.

Below is a list of the titles for each curriculum session, a one-line summary description of the session content, and the key learning objectives for each session. (Please note that session titles and descriptions have been deliberately chosen to reflect language appropriate for young people):

Sessions	Summary Description	Learning Objectives – the key points for students/ young people to learn and understand
1. Welcome to iheart- a new way of understanding your mind	What is iheart and why is it helpful.	<ol style="list-style-type: none"> 1. Personal introductions 2. Create a group agreement for expected behaviour. 3. Receive an overview of the iheart programme. 4. See why this learning is relevant.
2. Our psychological system is an intelligent system	The nature of our psychological system is that it is reliable, predictable, intelligent and amazing.	<ol style="list-style-type: none"> 1. The key features of intelligent systems are that they are reliable, predictable and universal. 2. Our psychological system is an intelligent system that works in a predictable way, such that wellbeing is innate. Therefore, no one and no thing can put a feeling in us or give us/take away our wellbeing. Our feelings are connected to our thinking, therefore: <ul style="list-style-type: none"> - When we think that someone or something can put a feeling in us or give/take away our wellbeing, this is an illogical thought and it will create misguided, unhelpful and non-resilient thinking. We do not experience our innate wellbeing. - When we do not think that someone or something can put a feeling in us or give/take away our wellbeing, this is a logical thought and it will create insightful, common-sensical and resilient thinking. We experience our innate wellbeing. 3. When we know how intelligent systems work, there is great benefit; when we don't know, we are limited. 4. Psychologically, it is important to know which logic we are following as there are enormous implications either way.

Sessions	Summary Description	Learning Objectives – the key points for students/ young people to learn and understand
3. We have everything we need inside!	Our wellbeing is built-in; nothing can give it to us.	<ol style="list-style-type: none"> 1. Wellbeing - which includes wisdom, kindness, hope, peace of mind, resilience, gratitude, motivation, love and security - is innate to our psychological system and is our natural state. 2. These innate qualities can never be damaged, lost or broken, even when we cannot feel them. 3. Our wellbeing gets covered up when we don't know or forget that these qualities are innate. We then believe that there are certain things that can give us our wellbeing and things that can take it away. Consequently, our minds fill up with misguided and insecure thinking. 4. When we know or remember that our wellbeing resides within us, our minds automatically quieten and we experience more of our innate qualities, including resilience and helpful, wise thinking.
4. The mechanics of how our psychological system works	Thinking arises within our psychological system and is brought to life as our feelings.	<ol style="list-style-type: none"> 1. Our psychological system brings all our thinking to life. 2. When an illogical thought arises within our psychological system, we tend to overthink. We feel insecure, stuck and vulnerable. Our wellbeing gets covered up. 3. When a logical thought arises within our psychological system, our minds are quieter. We experience our wellbeing which includes resilience, security and wisdom. 4. Insight, a sight from within, is a part of our psychological system and collapses our misguided thinking, reconnecting us with our innate wellbeing.

Sessions	Summary Description	Learning Objectives – the key points for students/ young people to learn and understand
5. I feel stressed and anxious – no wonder I'm so unmotivated!	No one and no thing have the power to take away our wellbeing and make us feel stressed, anxious or worried.	<ol style="list-style-type: none"> 1. Feelings of stress, anxiety and worry arise when we attach our wellbeing or security to someone or something. This person or thing will now seem to have the power to put these feelings into us, which leads to other feelings such as hopelessness, fear and demotivation. 2. Depending on which logic we are coming from, we will experience our circumstances, however challenging, from a place of security or insecurity. 3. The question: <i>Do you think that someone or something is putting a feeling in you?</i> activates our compass, which in turn alerts us to what side of the line of logic we are on. 4. This is helpful to know. It provides the opportunity for insight to reconnect us with our wellbeing such that we will feel motivated and unafraid to try, even if we don't succeed. We will become natural learners.
6. I can't stop worrying about the future	When we know that a future event cannot take away our wellbeing, worrying about it makes less sense.	<ol style="list-style-type: none"> 1. Feelings of stress, pressure, anxiety and worry arise when we attach our wellbeing/security to a future event. It will seem as if this future event has the power to give us our wellbeing or take it away. 2. This illogical thought or false premise leads to the creation of assumptions, scenarios and expectations. We feel unmotivated and unconfident to face the future. 3. Future events cannot take away our wellbeing and put a feeling in us. This realisation is the antidote to worry and will free our minds to think about the future in a logical, resilient, confident and considered manner. <p>The question: <i>Do you think that someone or something is putting a feeling in you?</i> contains inbuilt self-correction. It alerts us to what side of the line of logic we are on and gives us an opportunity to reconnect with the present moment. It is here that we feel innately motivated and confident to face whatever the future may bring.</p>

Sessions	Summary Description	Learning Objectives – the key points for students/ young people to learn and understand
7. Can we think differently and still get along?	As everyone experiences their own thinking – separate realities – we realise that we can see things differently and still be friends.	<ol style="list-style-type: none"> 1. Everyone sees and experiences their own thinking. This is their personal or separate reality. 2. When we believe that other people thinking differently to us can take away our wellbeing, we get frustrated, angry and defensive. In these moments, we stop listening and communicating. 3. When we know that our wellbeing and security are innate and unconditional, we are not bothered when others see things differently to us. We then become better listeners and communicators. 4. Feeling love and connection is not dependent on other people agreeing with us.
8. Labels are for jars, not for people!	We are not born with a self-image, identity or label, so we are so much more than we think.	<ol style="list-style-type: none"> 1. We are not born with labels, i.e. with a fixed self-image or identity. As we grow up, there are times we are not experiencing our wellbeing and it is then that we develop fixed ideas about ourselves and begin labelling ourselves - and other people too. 2. When we label ourselves, we box ourselves in so that we see and interact with life through the filters of these labels. 3. When we remember that our wellbeing is innate, we fall out of our stories, labels and the limited thinking of who we think we are. We are then naturally loving, kind, wise, hopeful, grateful and content. We are learners. We feel motivated and are free to be ourselves in the moment. We are able to evolve and grow. 4. This allows us to also see who other people really are and refrain from putting them in boxes. It connects us all at a human level.

Sessions	Summary Description	Learning Objectives – the key points for students/ young people to learn and understand
9. Help! I am being bullied and Help! I can't control my anger	Because no one and nothing can take away our wellbeing or make us angry – not even a bully – we are psychologically safe.	<p>No one is born a bully; bullying is a behaviour.</p> <p>We gain an understanding into the mindset of a person who is behaving badly, including ourselves, and understand where bad behaviour stems from.</p> <p>2. Anger is a reaction we have when we believe that the behaviour of someone is insensitive, unfair, wrong or misinformed - and is affecting our wellbeing. We feel that our anger is justified, based on our perception of the situation and we react in an aggressive way.</p> <p>3. When we believe that someone is behaving badly towards us, in person or on social media, we think it is inevitable that we must feel hurt, insulted, rejected, worthless or left out. This is not true. Knowing or remembering that our security and wellbeing is innate and unconditional means we will not feel vulnerable in the face of other people's behaviour.</p> <p>4. It is empowering to know we are always psychologically safe. It frees our minds to respond resiliently and with due consideration, common sense and perspective in the face of real or perceived poor behaviour. This is a relief because it is not possible to control the way others behave.</p>
10. I can't stop using my phone! Am I addicted?	When we attach our wellbeing to something else, we feel compelled to engage in certain behaviours to get relief from a bad feeling or to get a better feeling.	<p>1. We all have behaviours that are habits and coping mechanisms. They become an addiction when we no longer feel free to choose to do them, but we feel like we have to or are compelled to do them in order to feel better or avoid feeling bad.</p> <p>2. When we outsource our wellbeing, there is an endless list of things that seems to take it away or give it to us. This false premise creates a lot of misguided thinking and feeling. It does not feel good and so we look to certain behaviours to try feel better. However, peace of mind does not reside in this logic.</p>

Sessions	Summary Description	Learning Objectives – the key points for students/ young people to learn and understand
10. I can't stop using my phone! Am I addicted?	When we attach our wellbeing to something else, we feel compelled to engage in certain behaviours to get relief from a bad feeling or to get a better feeling.	<ol style="list-style-type: none"> 3. Compulsive and addictive behaviours never give us a solution. At best, they seem to offer temporary relief or superficially distract us. 4. When we are secure and connected to our wellbeing, it would not occur to us to look to things to give us a feeling of wellbeing or peace of mind. We would be feeling it already. It would not be logical to look for it outside of ourselves. As we have more and more insight about where our wellbeing really lies, we will notice our unhelpful habits naturally falling away without effort..
11. Summing up the iheart journey	Taking the learning into life	<ol style="list-style-type: none"> 1. Students will graduate from the iheart programme. 2. They will create a project of their learning journey. 3. They will fill out end of programme surveys. 4. They will receive certificates and their own iheart Journals for reflective and future learning and reference.

Delivery

iheart is delivered by certified facilitators who have undergone extensive training in the iheart Curriculum. Within secondary schools, delivery often takes place in classes during students' PSHE sessions, though this is not necessarily the case and will vary from school to school depending on specific timetables.

Each session lasts 50-60 minutes (depending on the exact duration of a class) and uses a multimedia approach to learning. Students learn through all their senses: auditory, visual and kinaesthetic. This multi-faceted approach to learning improves the chances that every student will find a way to gain an understanding of the iheart approach. Students watch animations and videos, are shown summary slides to communicate key learning points, complete worksheets, participate in quizzes and group exercises, have opportunities for self-reflection, and engage in individual, paired and group activities. The pedagogy has many tangible elements to it and the sessions are taught in a simple way with lots of replication to allow for all students to understand and resonate with the core material. For example, to remind students of their innate qualities, a simple exercise involves students throwing a soft ball to each other and calling out the qualities referred to in their previous sessions.

There is a constant use of imagery and metaphors within the curriculum, helping students to better understand the core principles. For example, a snow-globe activity highlights how the mind fills up with unnecessary thinking when one attaches one's wellbeing to someone or something. When this happens, people cannot experience their wellbeing, yet it is still always present. However, when a person does not attach their wellbeing to someone or something, his/her mind is settled – like a snow-globe at rest. The activity communicates to young people how they can experience their wellbeing in these moments of self-insight as it is seen as a quality which is innate and always available.

Another representational activity is the feeling balloon. In this activity, the balloon represents 'illogical thought'; words which are written directly on the balloon for participants to see. Students chose an example such as 'exams make me feel stressed'. They are then asked to give examples of the thinking that might fill their heads in their chosen example. As students express their thoughts, they keep blowing up the balloon, stopping between breaths to observe the illogical thought and misguided thinking that was created. Importantly, the connection between thought and feeling is made through this activity. Even more significantly, the opportunity for the deeper insight that no one can put a feeling in them, is manifest through this activity as they let go of the balloon and watch all their stressful thinking and unhelpful feelings deflate.

As demonstrated in anonymous post-intervention questionnaires completed by all participants, these types of activities leave a lasting effect. Consistently positive feedback has emerged regarding the understanding and enjoyment deriving from the range of activities and exercises that are a feature of every curriculum session.

Facilitator training

The iheart Academy provides training courses to develop the required knowledge, expertise and skills to deliver the iheart Curriculum. The Level 1 Facilitator Training Course offers certification for an individual to teach the iheart Curriculum to groups of young people within school/educational/group settings. This course comprises 7 modules spread across a 4-month period, consisting of 100 hours of blended learning time, as indicated in the table below:

	Module	Description/Purpose
1	Foundation Course: Introduction to the iheart Principles	8 x 90-minute recorded sessions exploring the educational philosophy behind the iheart approach, to be watched in self-directed time by trainees followed by submission of coursework
2	Small Group Tutorials	4 x 1-hr tutorial sessions to address questions and issues that have arisen in Module 1, and to further self-understanding
3	Curriculum Training	5 x 6-hr workshop days of in-depth training in the iheart Curriculum, session by session
4	Group Webinars: a) The iheart Principles indepth b) Classroom Management	3 x 3-hr webinars to deepen self-knowledge and understanding of the Principles and addressing issues that have arisen in Module 3 2 x 90-minute webinars providing practical and advanced input on classroom management theory, issues and skills
5	Practicum	2 x 6-hr workshop days, working in small groups/pairs, to begin practising and experimenting with delivery in front of peers and faculty
	SUBMISSION OF ADVANCED COURSEWORK & SELFASSESSMENT FORM	*Required to progress to Modules 6 & 7
6	Observation of Curriculum Delivery	11 x 1-hr recorded sessions of iheart faculty delivering the Curriculum to students inside the classroom; To be watched in self-directed time by trainees.
7	Advanced Practicum	2 x 6-hr workshop days to hone skills in classroom delivery, further delivery practise and receive directed feedback from faculty

The origins of the iheart principles

There is an emergent form of mental health education known as the Three Principles (also referred to as Innate Health or Health Realisation), which is the premise of iheart's methodology. The Three Principles based approach is grounded in the work of Banks (1998), Mills (1995), and Pransky (1998). The approach is about 'understanding the logic of how the mind works' and has been described in detail elsewhere (Kelley, Pransky, & Lambert, 2015; J. Pransky & Kelley, 2014). Banks (1998) proposed that everyone's psychological life experiences are constructed from within via core principles which exemplify how we always experience life via the agency of thought (another way of saying this is that we live in a thought-created experience of life), and which account for a person's capacity to experience emotional resilience. Recognising the indivisible relationship between thought and feeling is what allows a person's innate mental health to flourish and is thus a factor in the aetiology and maintenance of both psychopathology and also good mental health/resilience (Kessel et al. 2017). Emerging evidence suggests that when people are exposed to Three Principles based mental health education, their mental wellbeing improves along with their resilience (Kelley, Pettit, Pransky, & Sedgeman, 2019). Kelley, Alexander, and Pransky (2017a) reported that compared to a waiting list control group, children/adolescents who were considered "high-risk" participants showed a significant decrease in risky behaviour.

Conclusions

iheart Principles, (registered charity number: 1173025) was established to educate young people to strengthen their mental health, wellbeing and resilience. This has been achieved by translating the core insights of the Three Principles and developing them further through devising a pedagogy via a structured curriculum that teaches resilience and wellbeing to young people. The core premise for the charity's work is that if a young person learns to develop this innate emotional resilience, it can and will act as a prevention to mental health problems.

The foundational message of the Curriculum – that wellbeing and mental health are innate, expressed via the core insight that we have everything we need inside of us – has been encapsulated within the iheart Curriculum. Creating the Curriculum and training facilitators and educators to deliver it in group/classroom settings has ensured that this core insight can be easily taught to young people. In focusing on delivering this message in a child/young-person friendly way which has practical relevance to the lives of young people, iheart has made and continues to make a significant contribution to the field of young people's mental health.

References

- Banks, S. (1998). *The Missing Link*. Vancouver, BC: Lone Pine Publishing.
- Kelley, T. M., Pransky, J., & Sedgeman, J. (2014). Realizing resilience in trauma exposed juvenile offenders: A promising new intervention for juvenile justice professionals. *Journal of Child & Adolescent Trauma* 7, 143–151.
- Kelley, T. M., Pransky, J., & Lambert, E. (2015). Realizing improved mental health through understanding three spiritual principles. *Spirituality in Clinical Practice*, 2(4), 267-281.
- Kelley, T. M., Alexander, J., & Pransky, J. (2017). Drawing-out resilience in children and high-risk adolescents via exposing them to three psycho-spiritual principles. *Journal of Child and Adolescent Behaviour*. 5(2), DOI: 10.4172/2375-4494.1000343
- Kelley, T. M., Hollows, J., & Savard, D. (2019). The efficacy of intensive three principles correctional counseling for improving the mental health/resilience of people in an English prison. *Journal of Offender Rehabilitation*, 58(8), 661-677.
- Kelley, T. M., Pettit, W. F., Pransky, J., & Sedgeman, J. (2019). A new “inside-out” view of general factor p. *European Psychiatry*, 61, 85-87.
- Kessel, A. Neill, M. Marmur, E. Malik, R. (2017) “A superpower? An educational initiative? Or something else ... *Journal of Public Mental Health*, Vol. 16 Issue: 4, 169-171.
- Mills, R. C. (1995). *Realizing mental health*. NY: Sulzeurger & Graham. Moore, K. A.
- Pransky, G. (1998). *The renaissance of psychology*. New York: Sulzburger & Graham.
- Pransky, J., & Kelley, T. M. (2014). Three principles for realizing mental health: A new psycho-spiritual view. *Journal of Creativity in Mental Health*, 9, 53-68.

Appendix B

Case study: Havelock School, England

Case Study Report

iheart Programme at an inner-city London Primary School

February 2020

Background & intervention

This case study report highlights the significant outcomes of the iheart Programme within the Year 5 cohort of 60 pupils at a primary school in the London Borough of Ealing. The programme was generously funded by a grant received from Heathrow Community Trust. Prior to the intervention, the particular year group included a high percentage of pupils with emotional and behavioural problems, with teachers reporting severe difficulties in managing their behaviour which adversely impacted the pupils' ability to learn and progress. One of the two selected classes had constant educational disruption as they lacked consistent teachers to educate them. Linguistic barriers are significant for a very high percentage of the 433 pupils at the school. Several pupils would be deemed highly vulnerable. Other key school demographics include:

- Ethnic backgrounds: 55% Indian, 7% Pakistani, 11% Somalian, 5% other Asian
- 97% pupils have English as an additional language (EAL)
- 3 pupils on the Child Protection Registrar
- 9 pupils in need of help and protection (CIN)

Intervention details

- 10 weeks; 1-hr weekly lessons in the iheart Curriculum
- 2 classes; 30 pupils in each; iheart certified facilitator delivering each lesson
- Assembly to entire cohort and smaller focus group pre programme delivery

Results have been presented from pre and post programme questionnaires and video testimonials of the pupils describing their experiences. This report references changes expressed by the pupils with regards to their emotional wellbeing, relationships, and the overall school experience following their participation in the iheart programme. The transformation for many of the pupils who participated has been so significant that the Headteacher asked iheart to deliver further training to staff (iheart Wellbeing Course for Teachers) to embed this intervention within the school environment, a programme which took place in May/June, 2020.

Qualitative questionnaire post iheart programme

38 questionnaires were completed by pupils at the conclusion of the final iheart session. Pupils were asked to write down changes in themselves, what they thought the cause of these changes were, what they learned and if they would recommend it to others. Below are the results and written quotes to support the findings:

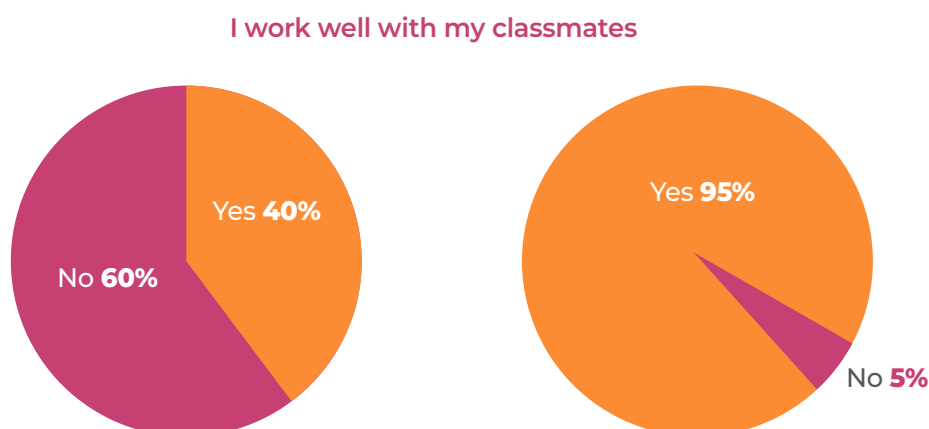
- **100%** would recommend the programme to others
- **98%** noticed a positive change in themselves following the programme
- **29%** reported less stress and worry
- **27%** reported feeling less angry
- **22%** reported greater emotional resilience and improved confidence in their capacity to access mental wellbeing

Psychometric pre and post questionnaire results

The psychometric tests differ to the post intervention questionnaires as pupils answer the same questions pre and post iheart lessons. They answered the questions anonymously on a Likert Scale and were only required to circle their answers. The results shown highlight some of the most significant findings.

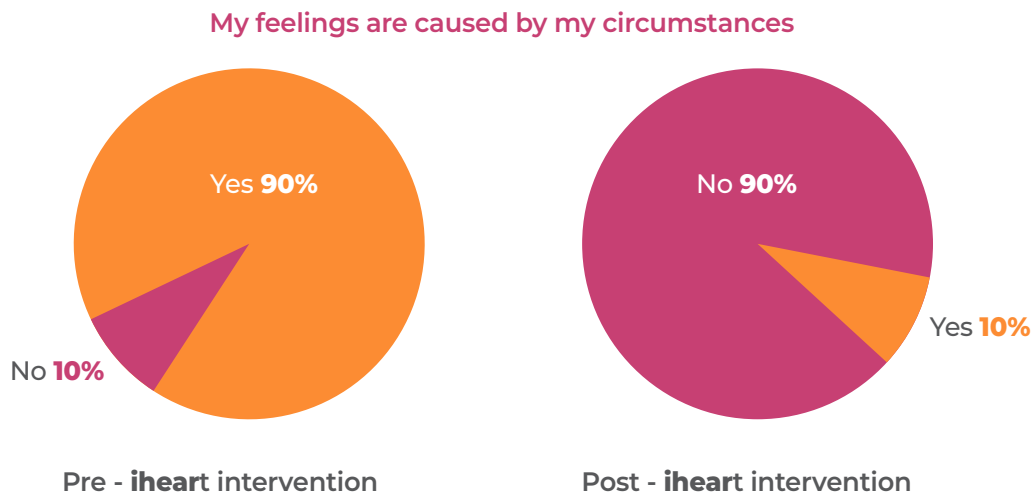
Pre-iheart intervention, 39% of pupils reported that they could work well with their classmates. This group **increased to 94% post-iheart intervention.**

(Havelock School Case Study, 2020; Note that the full study is included in Appendix B.)



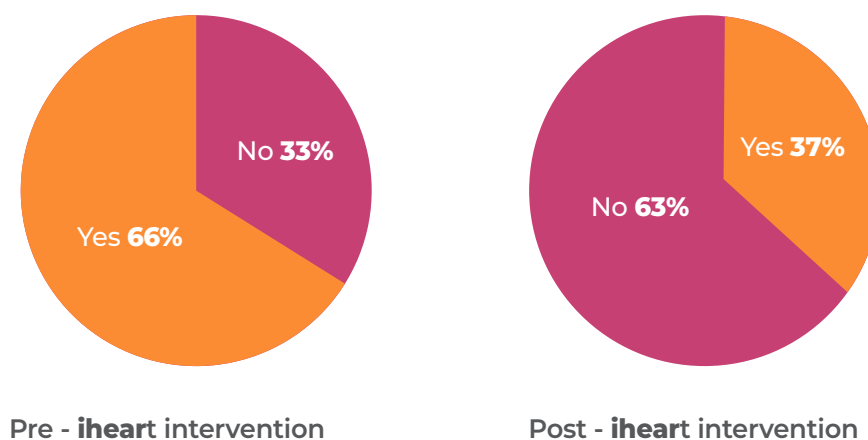
Pre-intervention, 40% of pupils reported that they were able to work well with their classmates. **This group increased to 95% post-intervention.**

Post-intervention, there was a significant decrease in the attribution of feelings being caused by circumstances. This reflects a significant increase in levels of emotional resilience, as pupils no longer feel they are “victims” of their circumstances.



Post intervention, there was a significant reduction in pupils believing that feelings of worry or anxiety means something is wrong with them. This reflects a significant increase in levels of mental wellbeing.

Feeling worried or anxious means there is something wrong with me



Headteacher and teachers' summary testimonials

Headteacher: *"iheart has enabled this year group to describe their feelings with a common language. As a result, the children are more rational and reflective about reacting when things go wrong."*

Class Teacher: *"I am speechless, it's one thing to have the insight for yourself but another level to be able to share it with kids. Something has shifted on a collective level; we interviewed these children as individuals ... but it is having a knock-on effect on the whole year group. It's so powerful. What I loved is when they spoke about their learning, they spoke about the core principles they had learned. I would never have imagined they would have had such deep insights so deep and really life changing. To think that a 9-year-old can have that reflection and say: 'My life has changed'. It is so profound, there is so much we can learn from them."*

Table 1: **Summary & explanation of primary themes and trends found from quantitative and qualitative analysis**

Improved Relationships	<p>Relationships improved amongst peers, siblings and parents</p> <p>Increase in empathy amongst peers creating a collective shift in behaviour.</p> <p>Participants took their teachings home and taught their siblings and parents about dealing with anger and not needing to fight back when family members and peers became angry with them.</p>
Improved Emotional Wellbeing & Resilience	<p>The biggest trend was the reduction in worry and anxiety.</p> <p>There was also a decrease in fear and sadness.</p> <p>The teachings in emotional regulation provided tools to pupils to reduce their stress during exam periods.</p> <p>The overall increase in wellbeing was reflected by the fact that all participants, without exception, recommended the programme for their peers.</p>
Reduction in Behavioural Problems	<p>The biggest transformation was the reduction in anger and bullying behaviour.</p> <p>Participants grasped one of the programme's salient learning points: that other people's emotions should not affect their own and therefore they did not need feel the need to react violently.</p>

Improved Impulse Control	<p>The improvement in impulse control led to the cultivation of self-awareness, self-regulation and building emotional boundaries.</p> <p>Many children who had been previously bullied no longer felt upset by others' actions and were even able to calm down other pupils who felt anger. This in turn helped to create a collective change within the school atmosphere as pupils learnt from each other, became less judgemental and more compassionate.</p>
Improved Classroom Behaviour and Motivation	<p>Participants experienced improved concentration and behaviour during class, helping them to focus more on their work and become less distracted by their peers.</p> <p>Pupils developed an increase in confidence which in turn improved their classroom participation, with many of the quieter pupils starting to raise their hands more frequently, whilst others who had previously struggled to make friends or work together found themselves able to create better friendships.</p>

Table 2: **Themes and trends with quotes from student interviews to support findings**

Improved Relationships	
Sibling Relationships	<i>"I would always get angry at the little things my sister does. I would shout at her and it would make her feel really sad...now we get along really well and play together and when she does something that annoys me, I don't mind."</i>
Parental Relationships	<i>"I spoke to my mum a bit more calmly; I spoke to her how iheart helped me and she calmed down."</i>
Peer Relationships	<i>"iheart has made me get along with people better. Even a bully can't make me sad or worried."</i> <i>"iheart has helped with my friends a lot."</i>
Improved Emotional Wellbeing & Resilience	
Anxiety, worry and calm	<i>"I used to get worried that something bad might happen every day but iheart taught me that nothing can really make me worried or sad."</i> <i>"Since iheart I've noticed I'm getting a lot calmer."</i>
Happiness	<i>"When I learnt about iheart, I started to feel really happy."</i> <i>"I learnt nothing could make me sad. It's just the power of thought; nobody or anybody can make you sad."</i>

Confidence & self-belief	<p><i>"It's not true that people have the power to put bad feelings inside us. I can put a good feeling in myself as well."</i></p> <p><i>"First I had nobody to play with, but because of iheart now I do. It has helped me because I have the confidence to ask if I can play with them; before I was nervous but now I'm not nervous or shy."</i></p>
Feelings of victimisation	<p><i>"I used to get bullied a lot, until I realised I should not get very emotional. After iheart I realised I could do anything. Nobody can be in charge of me except for me."</i></p>
Dealing with setbacks	<p><i>"My mum found lots of changes in me. She said you are more resilient and can handle difficulties and concentrate on your work more."</i></p>
Reduction in Behavioural Problems	
Dealing with anger & upset	<p><i>"Before iheart came I had really bad anger. I could be set off by anything... its revolutionary what its done for me. I never thought I would see the day when my anger would just go away in a matter of seconds. It's crazy if I think of it. It's gone my anger."</i></p> <p><i>"If I get into trouble I shouldn't set off and start crying. If I do cry, go to my room, take a few breaths, read a book and not get carried away and start smashing things."</i></p>
Dealing with anger & upset	<p><i>"Before iheart lessons I used to get into lots of fights. I would tell bad words and got into bad things... iheart has made me a better person, because first nobody wanted to be my friend because I fight with them. But now I have lots of friends because I'm no longer angry and I don't want to fight."</i></p> <p><i>"I realised there was no good reason for me to be angry. For example, if someone in a class makes me upset I used to take it out on someone else."</i></p>
Improved Impulse Control	
Self-awareness/ self-regulation	<p><i>"I have control over myself and nobody can control me."</i></p> <p><i>"I reflect on the bad behaviour that I do. I used to have a really bad attitude"</i></p> <p><i>"Before when someone pushed me, I felt I had to do it back to them. But then when iheart came I felt it was all wrong and realised why would I even do that in the first place. So I managed to calm myself down and not get into any more fights or get into trouble with teachers. It felt like I just changed the whole of myself from being bad and then turning into a good person. From never finding help but then it magically comes to you and you never thought it would actually come but it did."</i></p>

Tolerance	<i>"It has helped me to realise we are all different and some of us might not be feeling the same thing. If people judge just let them judge, but it never means anything, if someone calls you a rude name, just ignore it. It doesn't have the power of putting a bad feeling inside of you."</i>
Improved Classroom Behaviour and Motivation	
Concentration	<i>"I used to talk and didn't get my work done but then after the lessons it has taught me how to concentrate more."</i>
Perseverance	<i>"It's helped me with school because when I do my learning I do not give up."</i>
Getting in trouble	<i>"I do not get into trouble as much in class and I focus on my work now."</i>
Participation	<i>"It's been really helpful because I was never confident and was really shy and never put my hand. But now I do and I've joined clubs and stuff."</i>
Exam stress	<i>"Before you came, I had a mock exam that made me frightened... but now that I know I have these qualities inside me, I have two more mock exams and I will use the power of thought to help me concentrate more."</i>

Economic implications & conclusion

Economically, it has been estimated that the lifetime costs associated with a moderate mental health/behavioural problem is £85,000 per youth, and £260,000 for a youth with a severe mental health/behavioural problem (Beecham, 2014). A programme such as iheart, with the impact described above, therefore becomes a very cost-effective preventative solution to mental health/behavioural problems. The programme costs £1900 per class, and assuming 30 children per class, is equivalent to:

■ £6.33 per child per session

■ £63.33 per child for the full 10 sessions

Had the pupils of this school not received this intervention to support their emotional resilience, the potential cost could be as much as £3.7million if each child developed moderate mental/behavioural problems.

Although this Case Study is not intended as a robust evaluation of the economic benefits and risks of a preventative mental health education intervention, it is worth noting in conclusion, the comments of 9-year-old Zubeer, who began the programme as one of the most behaviourally challenged pupils:

“

Everybody should do this programme.
It's not about how much it costs.
It's about what it will actually do for you.

”



iheart Charity No. 1173025 | 66 Brent Street | London, UK. | NW4 2ES

P | 0044 (0) 20 8912 1216 E | info@iheartprinciples.com

iheartprinciples.com