



An Roinn Sláinte  
Department of Health

# NPHET COVID Update 25<sup>th</sup> August 2021

# Current situation



	01-Oct	26-Oct (2 <sup>nd</sup> wave peak 14 day inc.)	01-Dec	03-Dec (lowest 14 day inc.)	01-Jan	14-Jan (3 <sup>rd</sup> wave peak 14 day inc.)	17-Aug (1 week ago)	24-Aug
14-day incidence	96.08	310.87	88.31	80.85	321.68	1499.81	489.98	526.43
5-day average cases	407.0	933.2	264.6	265.4	1481.0	4485.4	1734.2	1814.4
Total weekly cases	2,607	7,102	1,927	1,776	9,445	35,517	12,317	12,751

	01-Oct	26-Oct (2 <sup>nd</sup> wave peak 14 day inc.)	01-Dec	03-Dec (lowest 14 day inc.)	01-Jan	14-Jan (3 <sup>rd</sup> wave peak 14 day inc.)	17-Aug (1 week ago)	24-Aug
No. Hospital (8.A.M)	122	344	224	234	508	1792	248	307
No. in ICU (11.30 A.M)	20	39	30	31	42	176	51	55

	JAN21	FEB21	MAR21	APR21	MAY21	JUN21	JUL21	AUG21	Unknown	Total since Mar2020
Reported in latest week (to 18/08/2021)	0	0	1	0	1	1	1	12	0	
Total	1,419	897	256	94	38	15	17	20	17	5,074

# Cases, numbers in hospital and intensive care

Case counts have increased very significantly in recent weeks; the number of people in hospital has increased six-fold since the end of June, as has the number of new admissions per day; numbers in ICU have increased after a delay.



	Apr 2020	Summer 2020	Oct 2020	Dec 2020	Jan 2021	Jun 2021	3 Aug	10 Aug	17 Aug	24 Aug	Daily count 24 Aug
Cases confirmed per day	859 18-04	8.7 25-06	1158 21-10	262 12-12	6516 10-01	308 19-06	1277	1574	1759	1822	1571
14-day incidence <i>per 100,000 population</i>	212 19-04	3.0 04-07	306 26-10	79 09-12	1528 15-01	91 20-06	370	419	490	526	
Hospital in-patients	862 17-04	9 02-08	333 01-11	198 16-12	1949 24-01	43 29-06	166	200	233	277	307
<i>Hospital admissions per day</i>	85 04-04	<1 10-07	27 26-10	11 13-12	158 15-01	6 27-06	23	28	33	41	42
ICU confirmed cases	150 14-04	4 04-08	43 04-11	26 27-12	217 28-01	13 27-06	26	31	47	55	55
<i>ICU admissions per day</i>	14 31-03	<1 03-06	4 03-11	1 16-12	20 17-01	<1 02-07	2	3	6	5	5
Deaths confirmed per day	46 22-04	<1 30-07	7 01-12	4 17-12	57 03-02	-	-	-	-	-	-

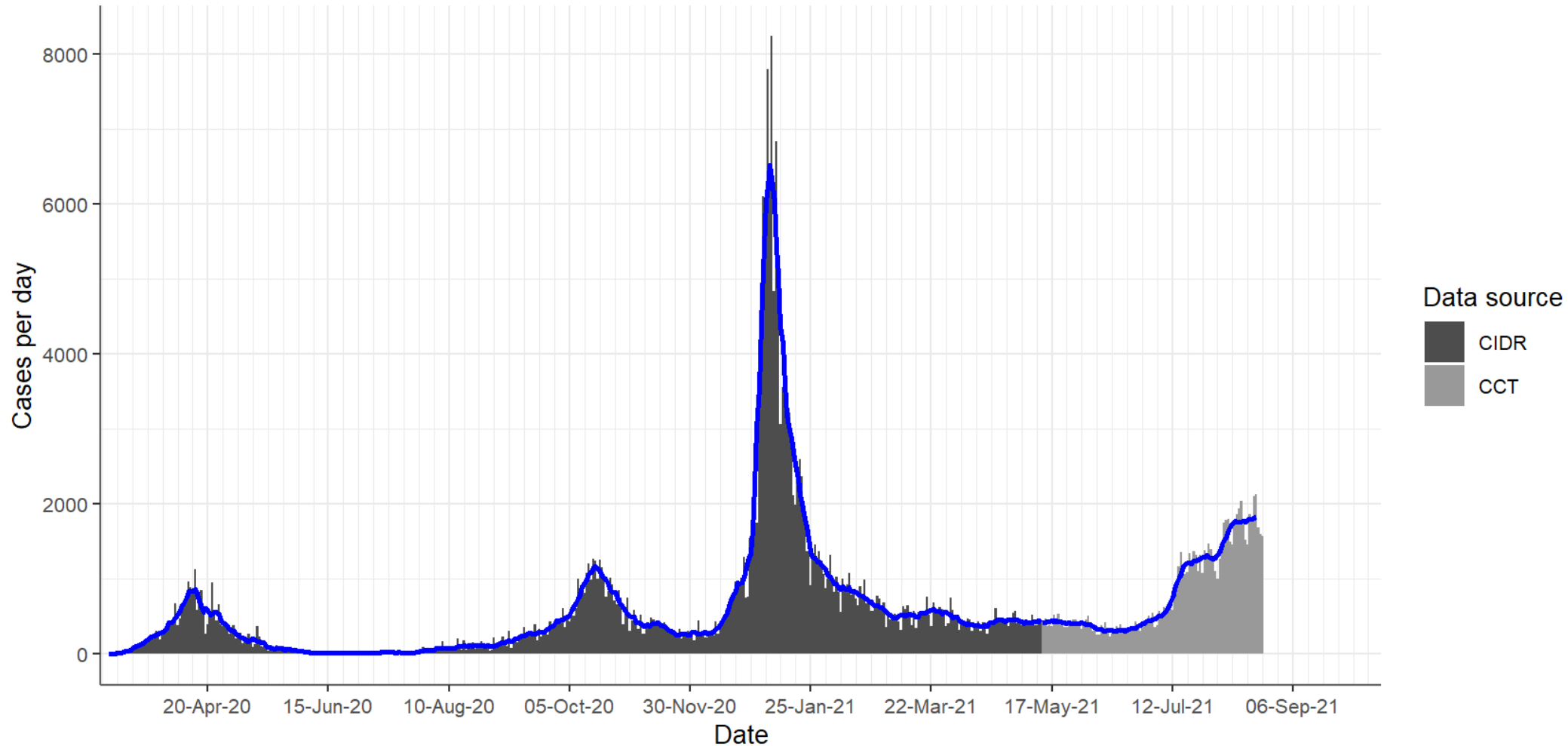
Data are 7-day averages (the indicated day and the preceding 6 days, rounded to the nearest whole number) with the exception of 14 day cumulative incidence, which is the total number of cases in the preceding 14 days per 100,000 population. The highest and lowest values of each indicator are given for each wave of the pandemic, along with the date on which that value was recorded, as well as the data for recent weeks. The historic incidence data may change due to denotification of cases. Case data from 13 May 2021 onward are estimates based on the number of positive tests reported. Data on deaths is incomplete and not reported



# Cases & Incidence Rates

# Confirmed cases each day

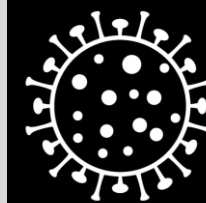
Daily count and 7-day rolling average in recent weeks. There was a long period in April and May where case counts were stable or decreasing, reaching a low of approximately 300 per day in the week beginning 13 June 2021; incidence increased rapidly in July with an unusual pattern: the 7-day average is now **1822**, up from **1759** seven days ago, **1574** two weeks ago, and **1277** three weeks ago.



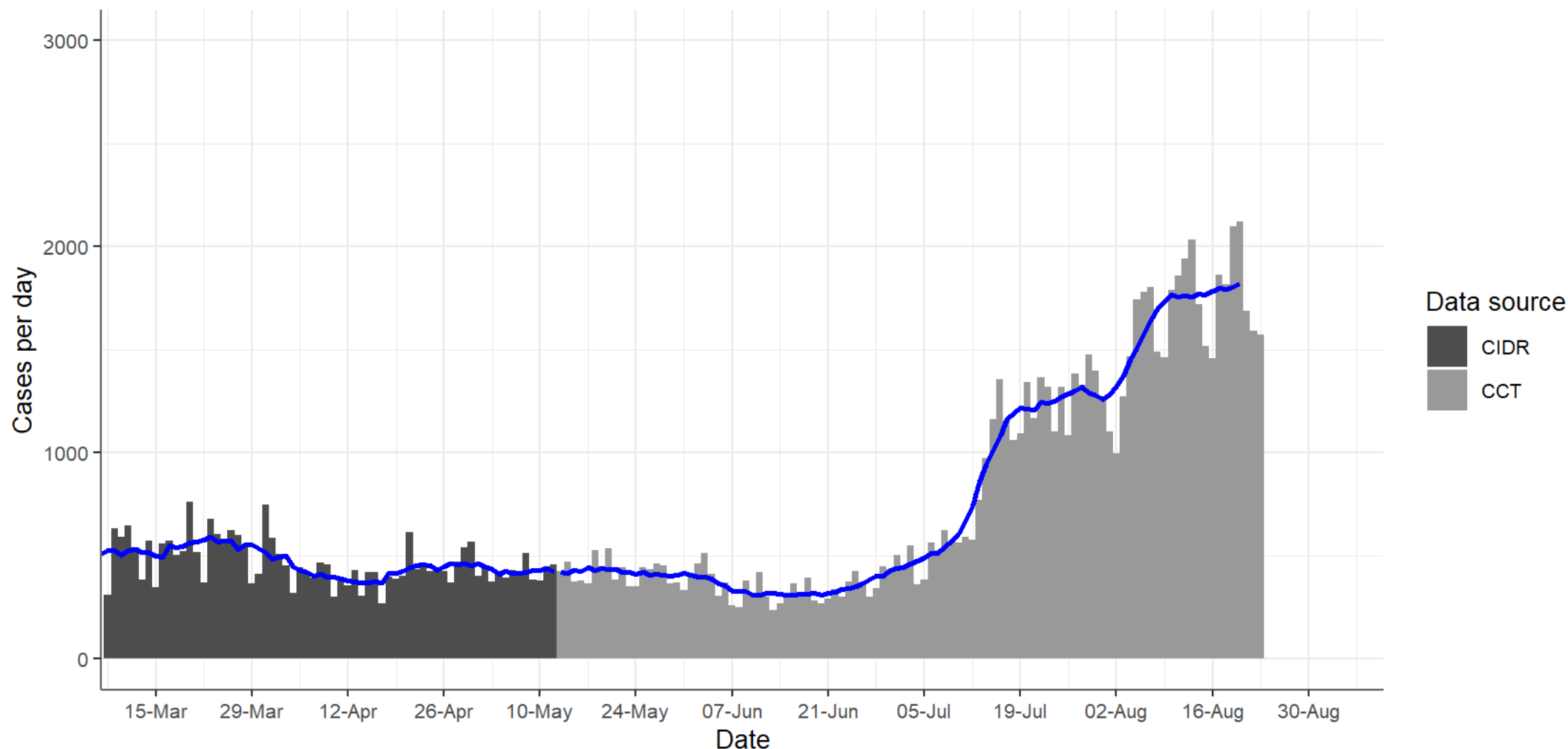
Daily count (bars) and 7-day average (line) of the number of laboratory confirmed new cases by date on which they were notified HPSC. Case counts may change due to denotification of cases. Case data from 13 May 2021 onward are provisional based on the number of positive tests reported through the HSE contact management programme.

# Confirmed cases each day

The population dynamics of infection are hard to discern at present, with step changes in early July and again in early August and very strong weekend effects: the average growth rate in cases since late June is 3-4% per day, the current estimate of growth rate is 0-2% per day



Coronavirus  
**COVID-19**  
Public Health  
Advice

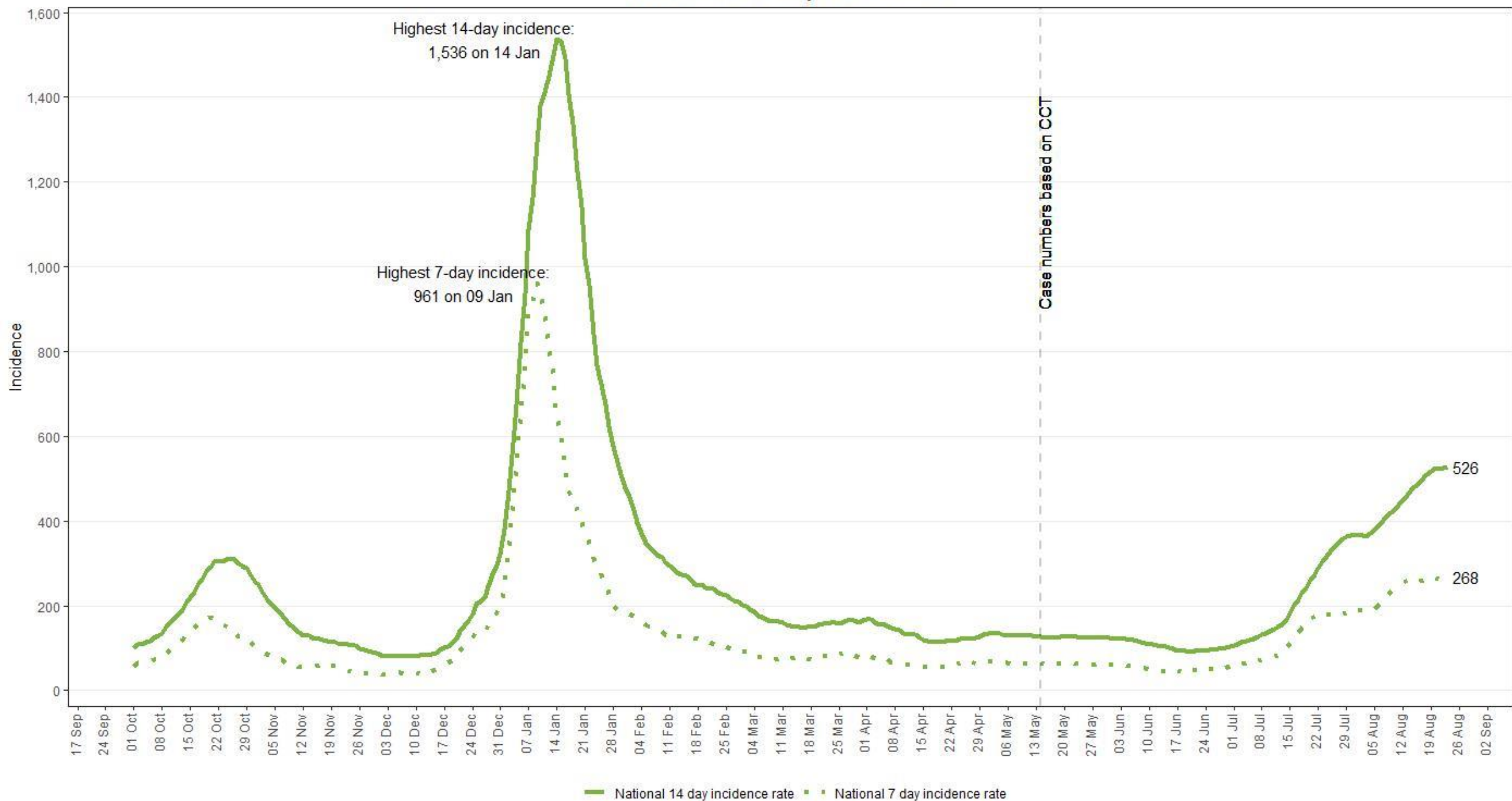


Daily count (bars) and 7-day average (line) of the number of laboratory confirmed new cases by date on which they were notified HPSC. Case counts may change due to denotification of cases. Case data from 13 May 2021 onward are provisional based on the number of positive tests reported through the HSE contact management programme.



Rialtas na hÉireann  
Government of Ireland

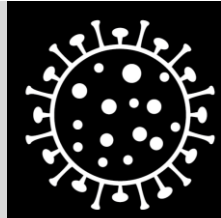
# National 7 and 14 day Incidence rates



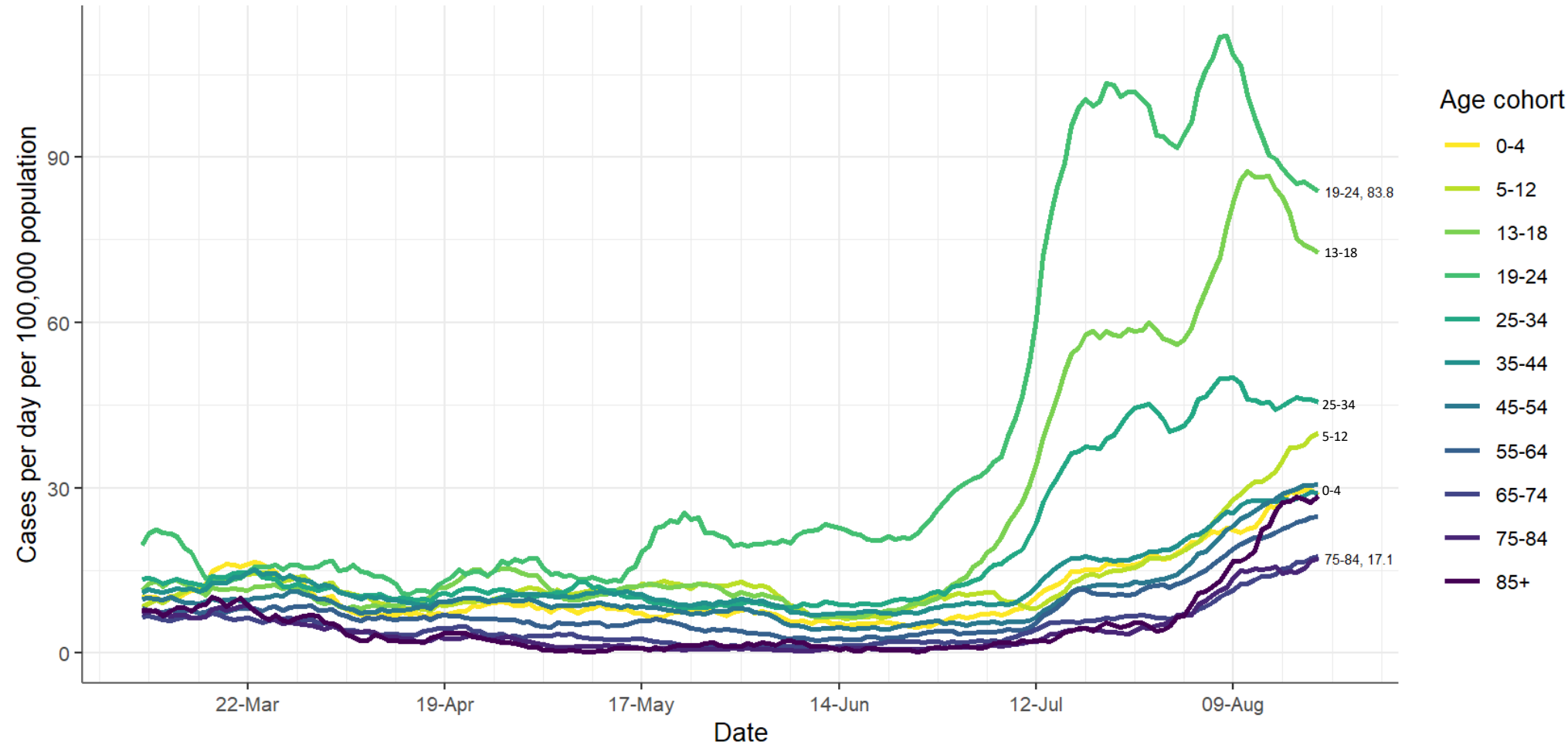
Due to the cyber attack on the HSE's IT systems, daily case numbers from 14 May onwards are based on a data extract from the Covid Care Tracker. Updated 24 August

# Young unvaccinated adults dominate case counts

Incidence is very high in those aged 19-24 years and 13-18 years; until recently most of the cases in this group were in 16-18 year olds, but incidence has also start to increase in those aged 13-15 years. Incidence may be plateauing or starting to decrease in these groups, though this is complicated by very strong weekend effects. Incidence in children and older adults is increasing as force of infection increases; incidence in children under 12 has been lower than other unvaccinated groups, comparable with incidence in vaccinated adults aged 35-64 years.



Coronavirus  
**COVID-19**  
Public Health  
Advice



Age-specific incidence (cases per day per 100,000 population). 7-day moving average.

CIDR data to midnight Wed 12 May 2021 and CCT data to midnight Mon 23 Aug 2021. Cases dated by event creation / case creation date

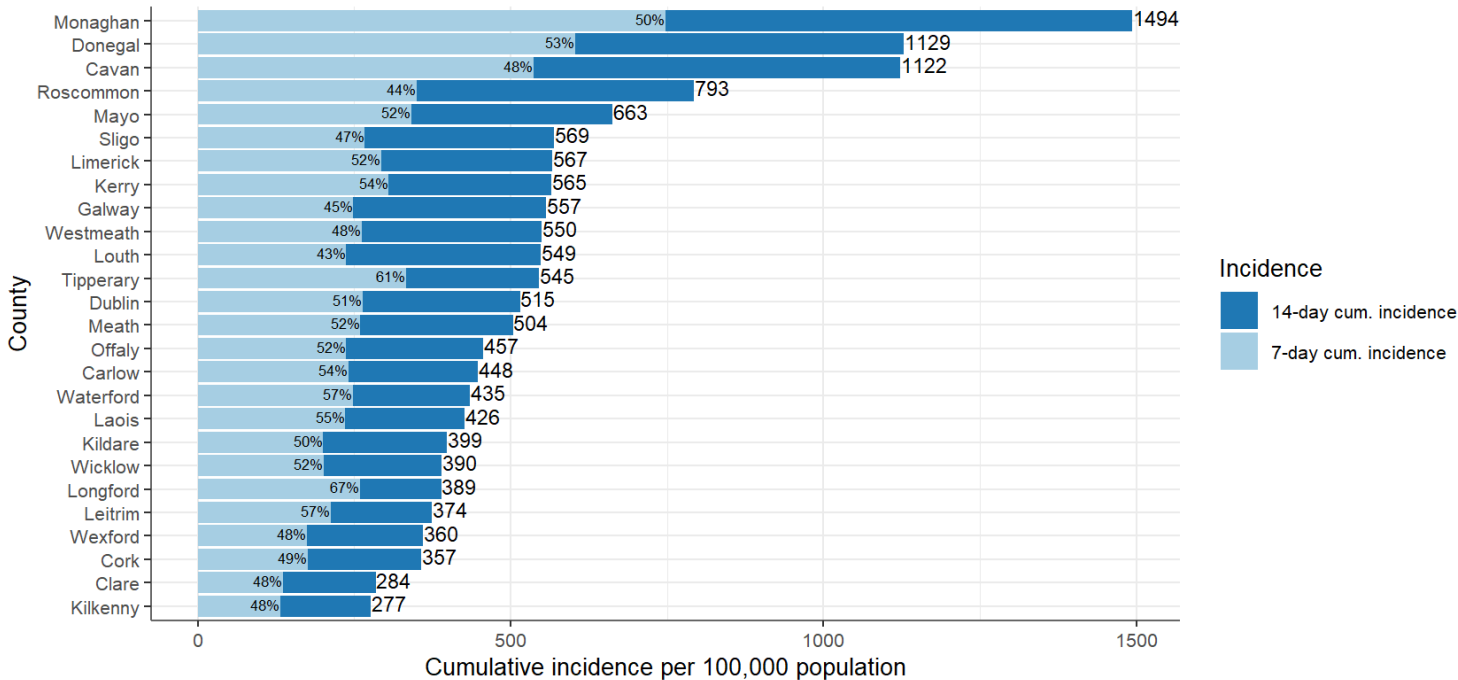


Rialtas na hÉireann  
Government of Ireland

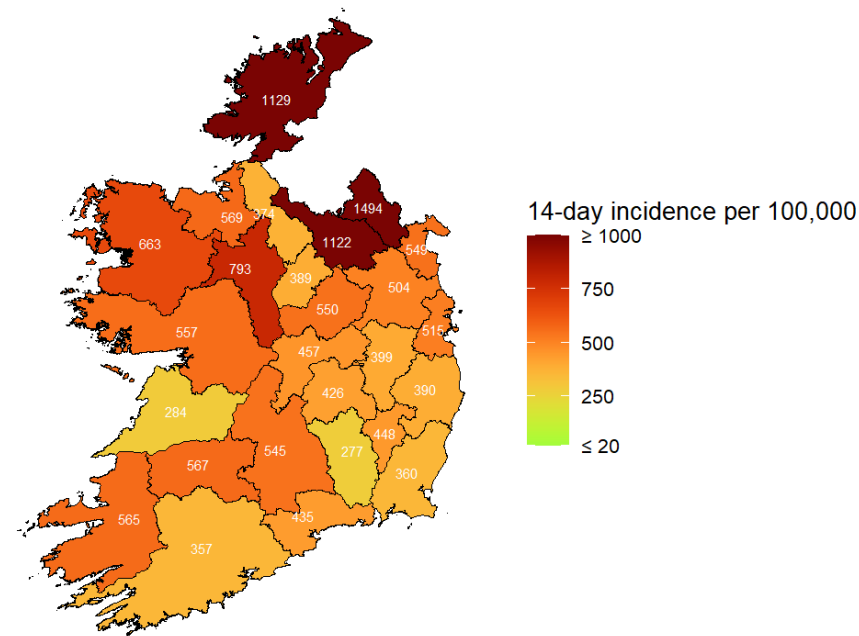


# Incidence by county

Incidence is very high in border counties. 14-day cumulative incidence is greater than 200 per 100,000 in all counties, greater than 500 per 100,000 in 14, and greater than 1000 per 100,000 (1%) in 3.

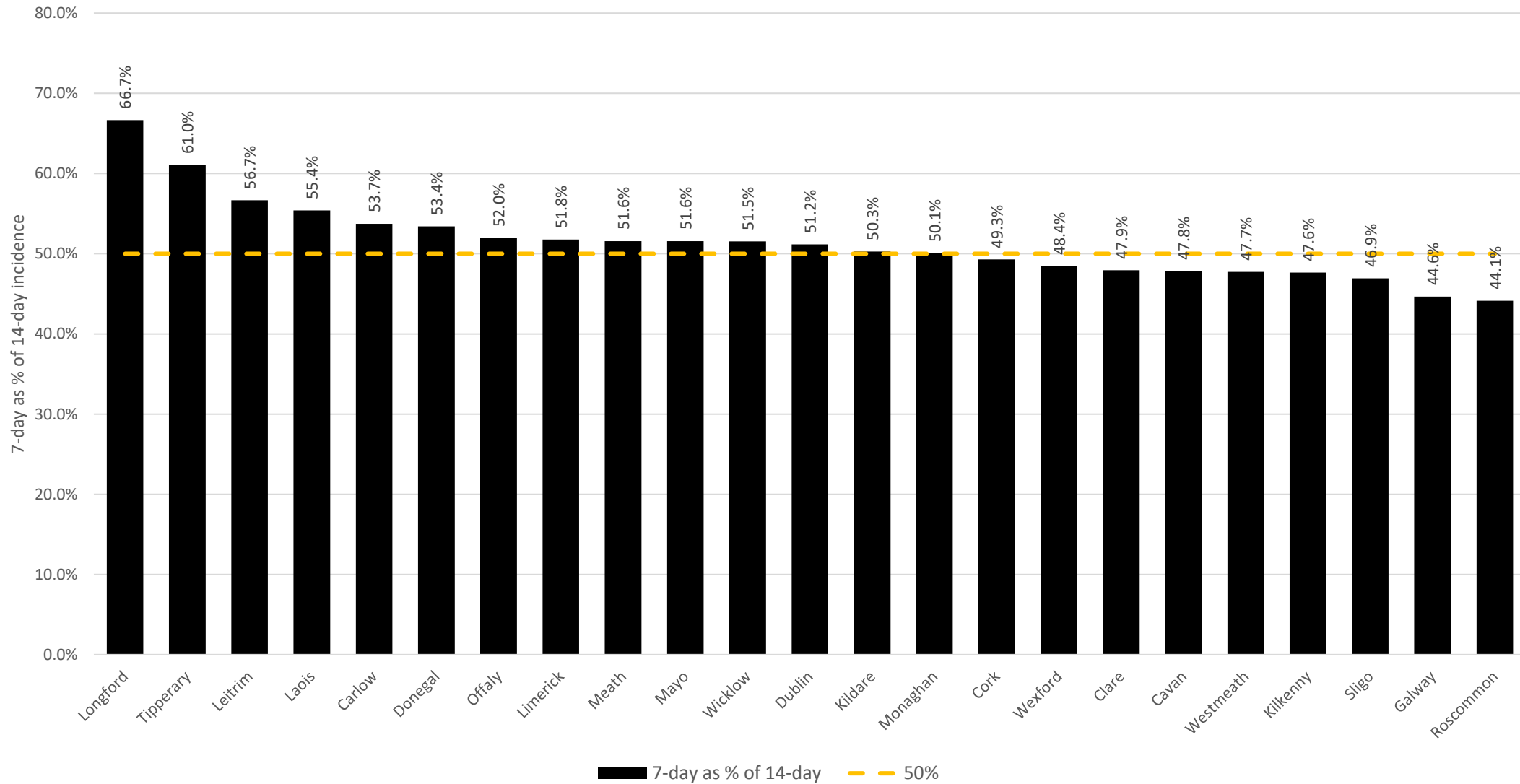


14-day and 7-day cumulative incidence per 100,000 population by county. Data labels are 14-day cumulative incidence, and 7-day cumulative incidence as a percentage of 14-day cumulative incidence. CIDR data to midnight Wed 12 May 2021 and CCT data to midnight Mon 23 Aug 2021. Cases dated by event creation / case creation date



14-day cumulative incidence per 100,000 population for each county. Colour scale truncated at 20 and 1000 cases per week per 100,000 population. CCT data to midnight Mon 23 Aug 2021. Cases dated by case creation date

7-day incidence as a % of 14-day incidence

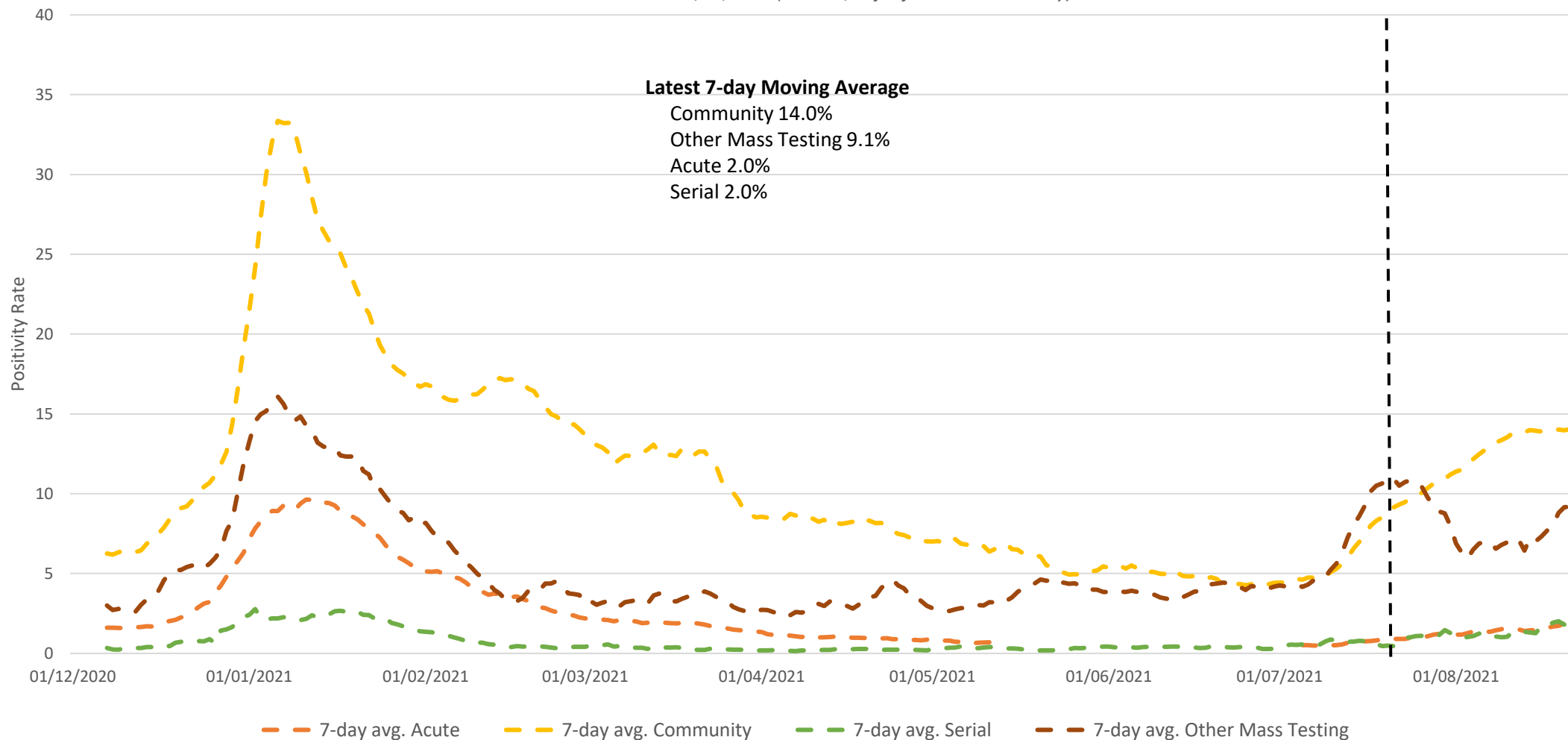




## 7-day Moving Average Positivity Rate by Testing Pathway

*\*Data from Acute Hospital testing limited since cyber-attack on 14/05/2021, gradual restoration from 06/07/2021*

*\*\* Break in series 29/07/2021 (walk-in /self-referral to Community)*



Updated 24/08/2021. Source: CRM data, HSE Contact and Tracing Team.

Acute=Swabs taken in acute hospitals;

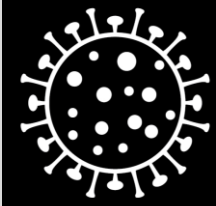
Community=Swabs taken in Community Test Centres for walk-in, online self-referral, GP and CMP referrals (symptomatic, close contact etc);

Serial=Swabs taken under the Serial Testing Programme in Nursing Homes, Food Production, Mental Health and Disability;

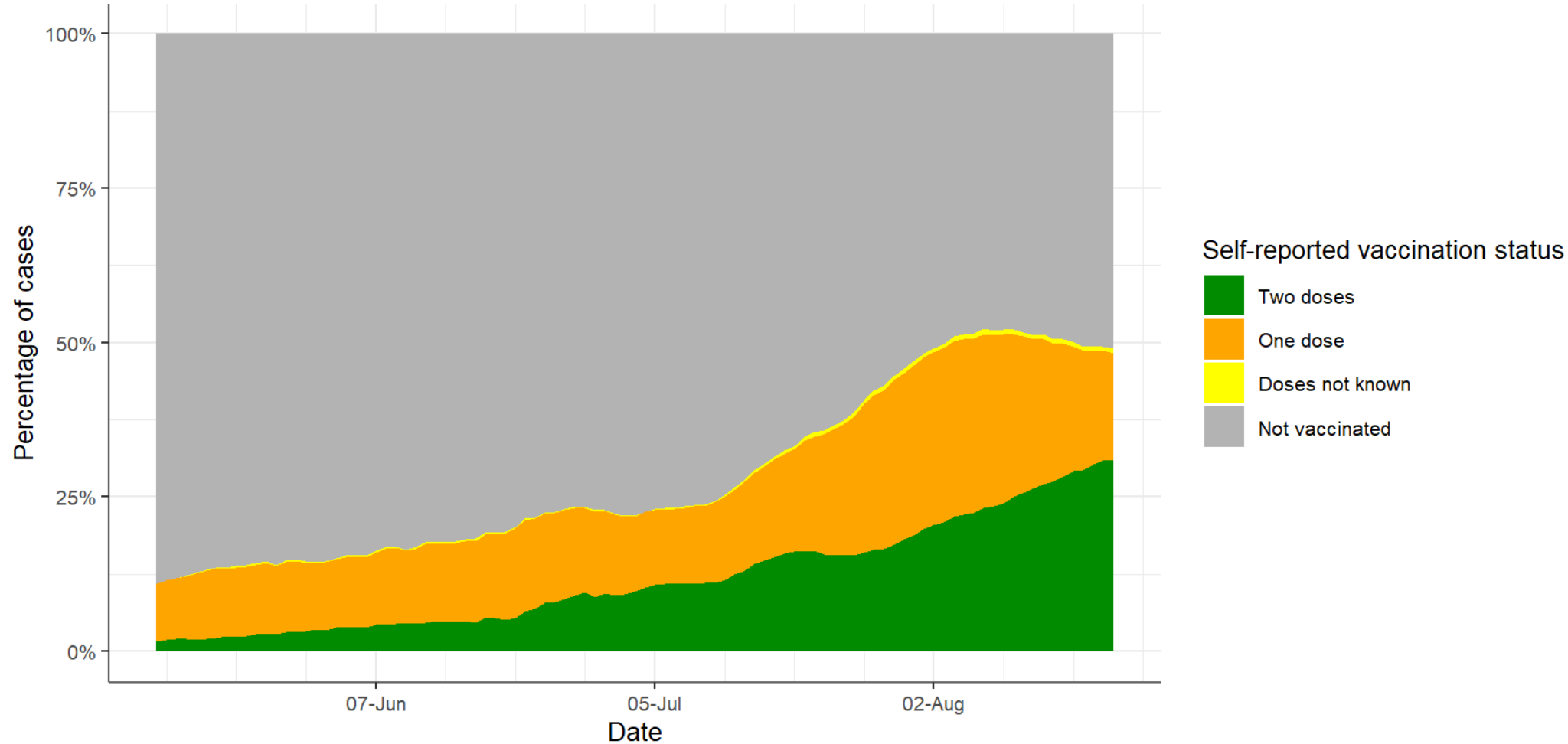
Other Mass=Swabs taken in response to an outbreak/case in facilities including workplaces, schools, nursing homes (ex. acute hospitals)

# Cases by self-reported vaccination status

The proportion of cases in people with two doses of vaccine has, as expected, increased over time as the proportion of the population vaccinated has increased; currently approximately 30% of cases, where their self-reported vaccination status is recorded, say they have received two doses.



Coronavirus  
**COVID-19**  
Public Health  
Advice



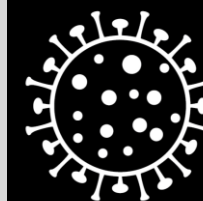
Percentage of daily cases by self-reported vaccination status excluding cases where vaccination status is not known.  
CCT data from Thu 13 May 2021 to midnight Mon 23 Aug 2021. Cases dated by case creation date



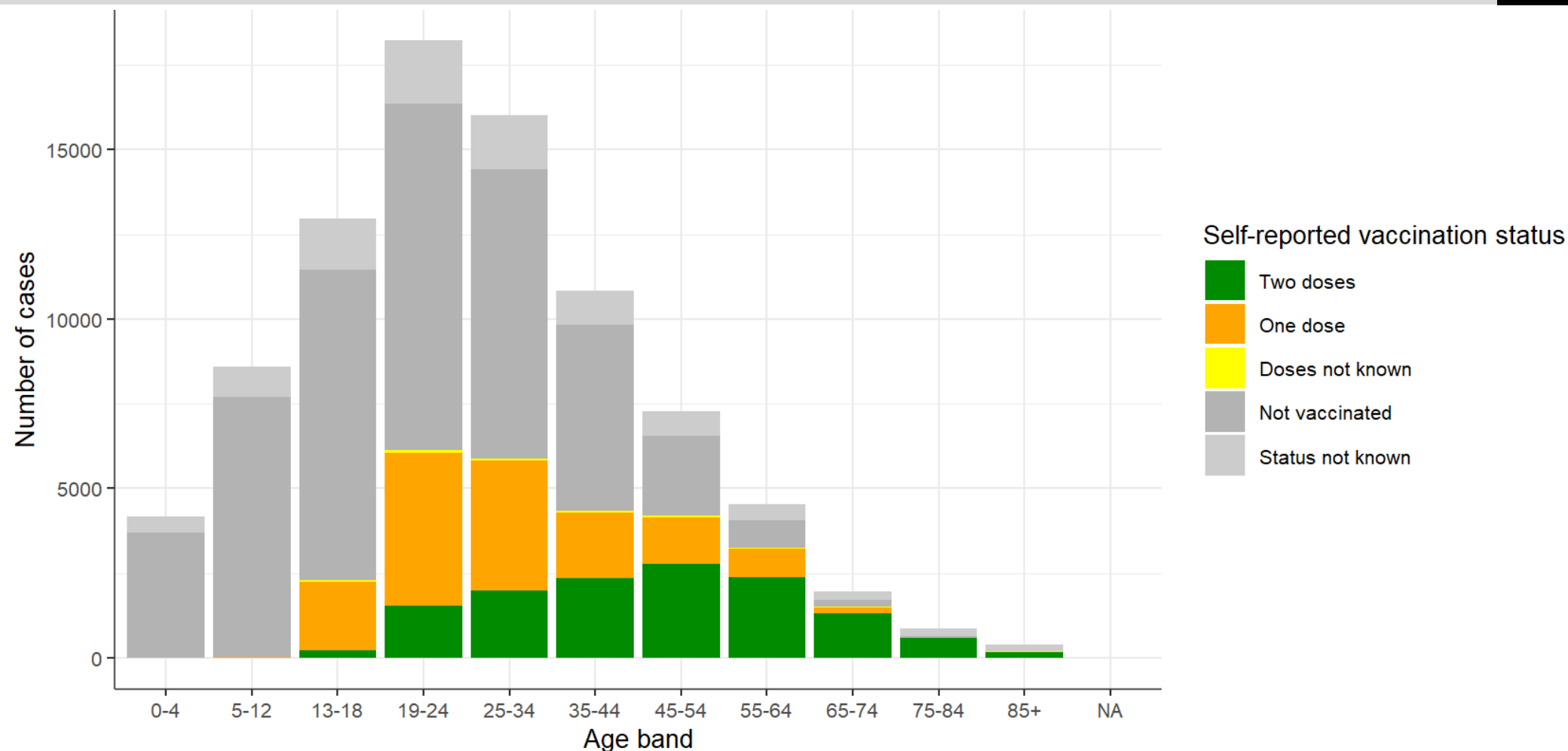
Rialtas na hÉireann  
Government of Ireland

# Cases by self-reported vaccination status

The majority of cases reported in recent weeks are in younger people who are not yet protected by vaccination; in older groups with higher vaccination rates the absolute number of cases is much lower, but a high proportion of those cases occur in vaccinated people



Coronavirus  
**COVID-19**  
Public Health  
Advice



Number of cases by age and self-reported vaccination status. CCT data from Thu 13 May 2021 to midnight Mon 23 Aug 2021.  
Cases dated by case creation date



Rialtas na hÉireann  
Government of Ireland

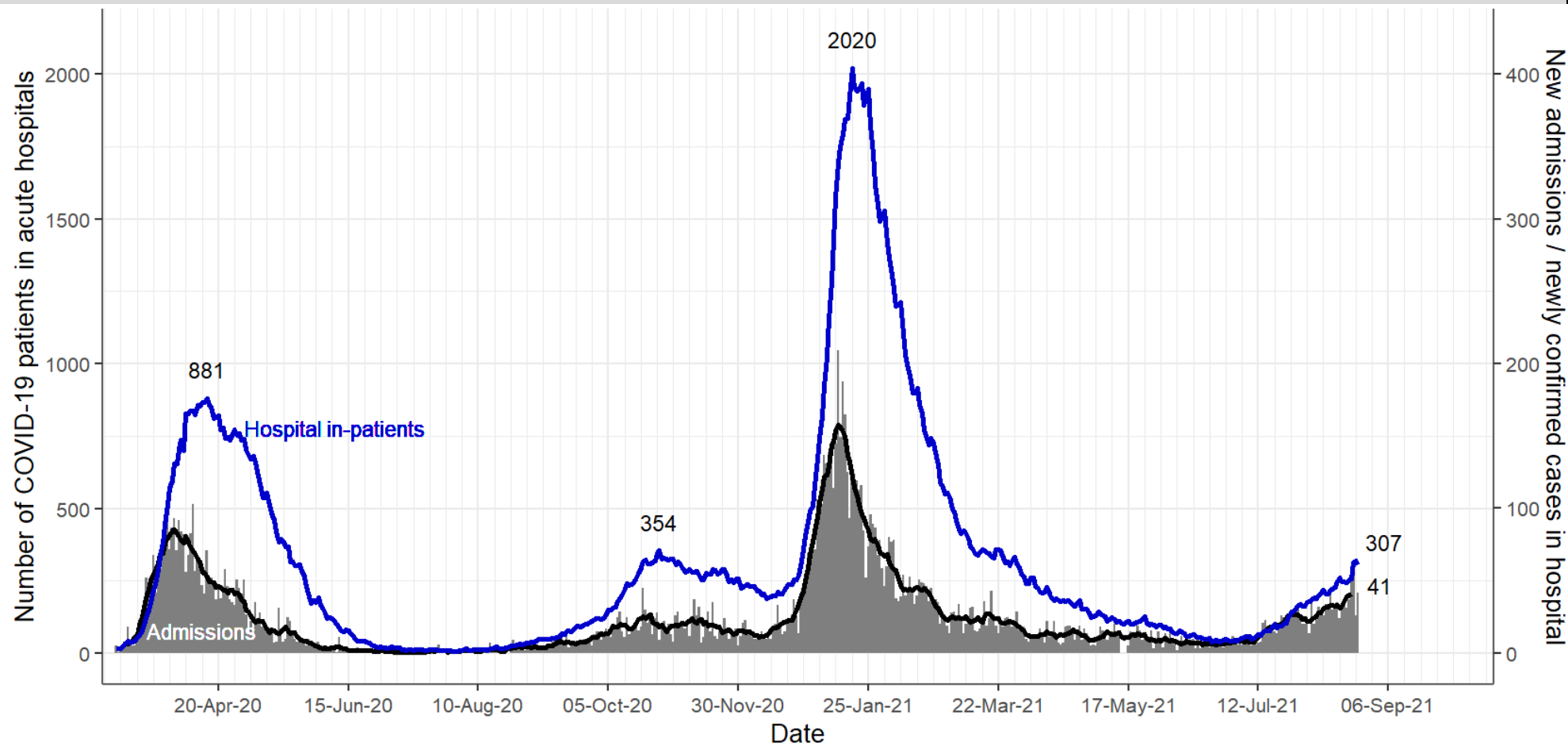


An Roinn Sláinte  
Department of Health

# Hospitals & ICU

# Confirmed cases in acute hospitals

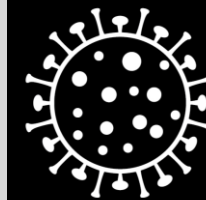
The number of people in hospital with confirmed SARS-CoV-2 infection. The number of people in hospital is **307**. The number of admissions and newly confirmed cases in hospital per day has increased to an average of **41 per day**.



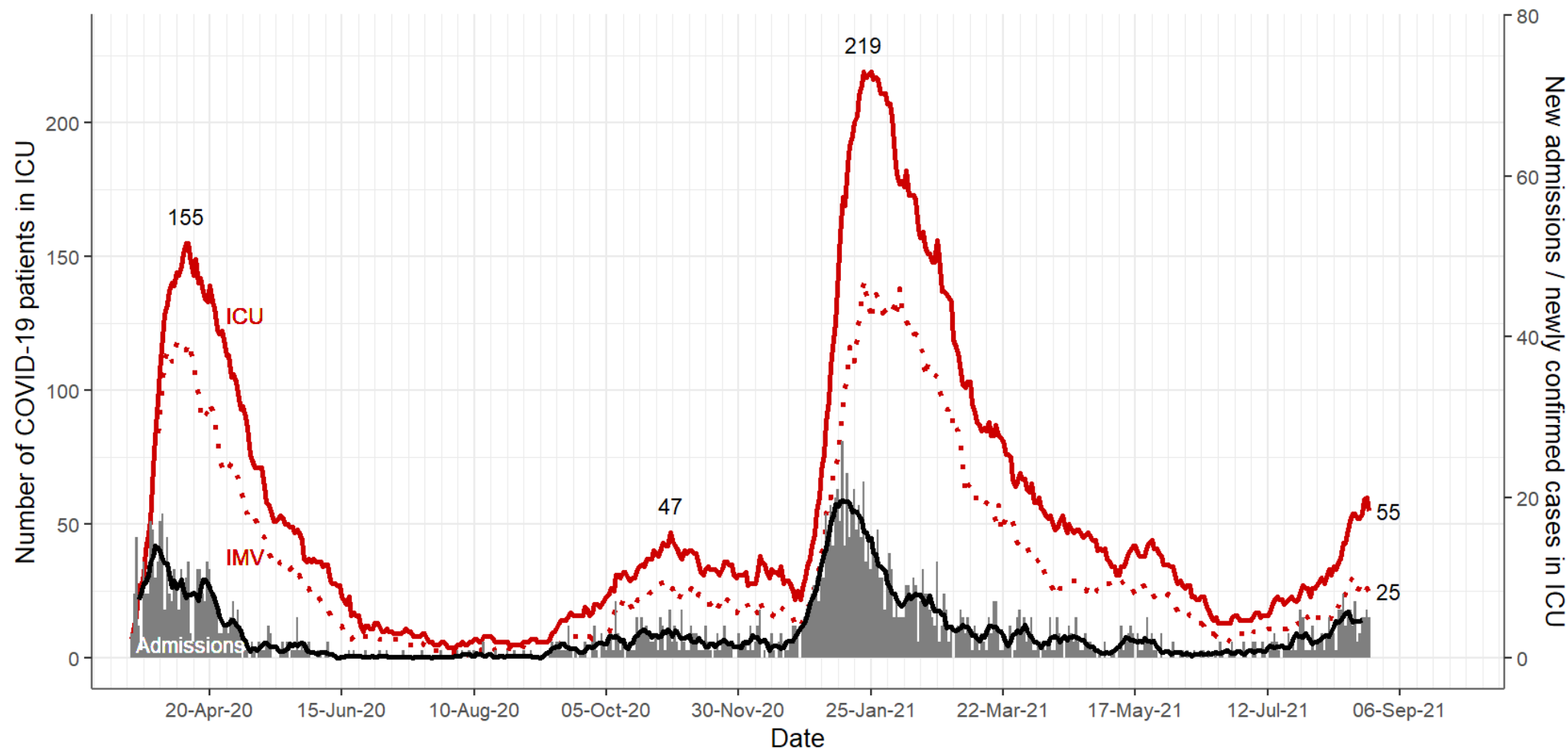
HSE PMIU-SDU data to Tue 24 Aug 2021. Number of in-patients with COVID-19 (blue line) and number of newly admitted or newly confirmed cases per day (columns, with 7-day moving average, black line, secondary y-axis) on HSE acute hospital sites

# Confirmed cases in intensive care

The number of people in ICU with confirmed SARS-CoV-2 infection and the number requiring mechanical ventilation remain low but have started to trend upward. **55** people in ICU, **25** mechanically ventilated, average **5** admissions per day.



Coronavirus  
**COVID-19**  
Public Health  
Advice



NOCA ICU-BIS data to Tue 24 Aug 2021. Number of patients with COVID-19 in ICU (red solid line) and number requiring mechanical ventilation (IMV, red dotted line) and number of new admissions per day (columns, with 7-day moving average, black line, secondary y-axis).



Rialtas na hÉireann  
Government of Ireland



## Vaccination status of COVID-19 cases admitted to ICU\*



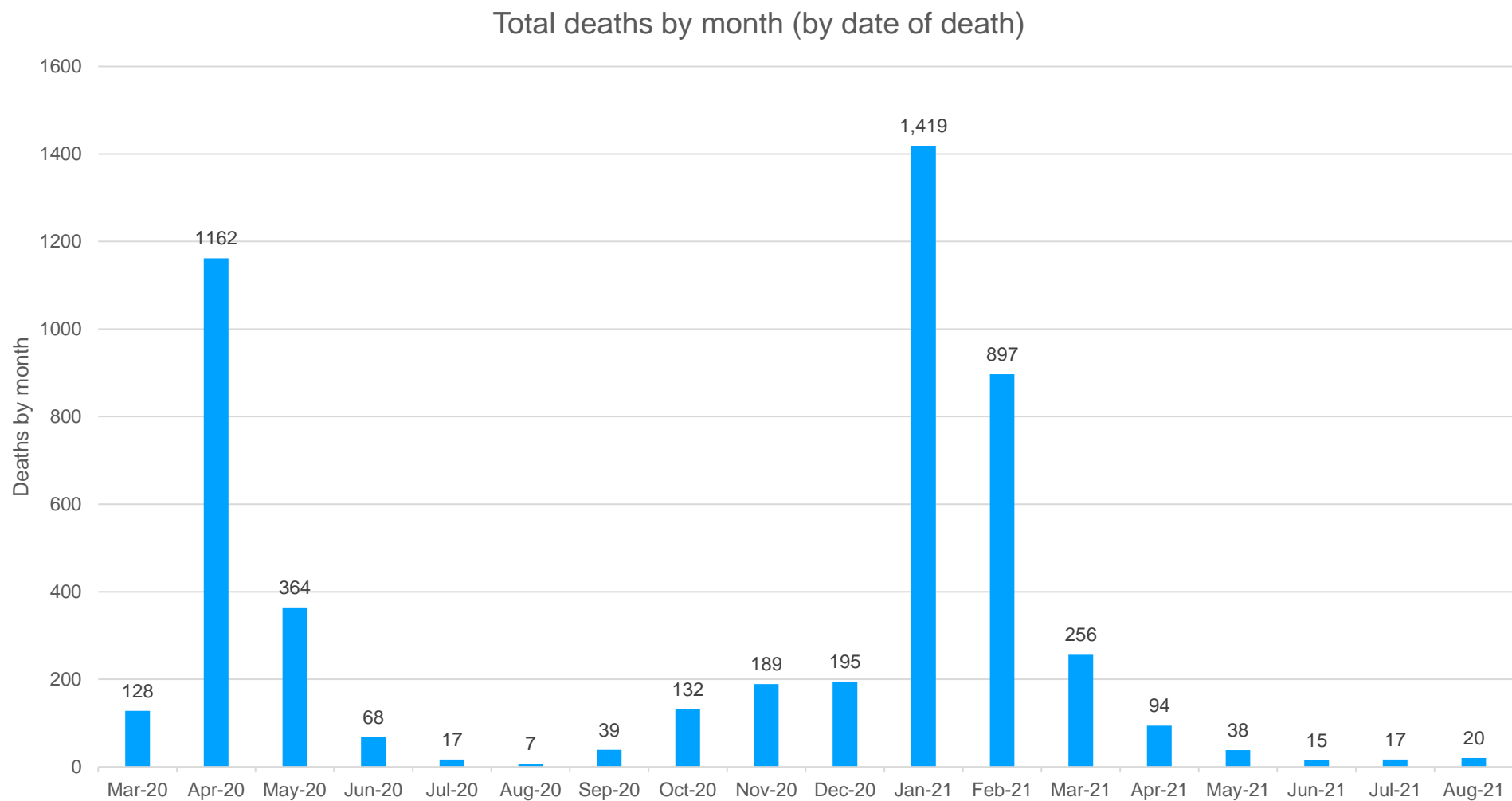
Between April 1st and August 14th 2021:

- 195 adults (aged 15 + years) were reported as admitted to ICU with confirmed COVID-19 infection
- 185 of these ICU admissions had vaccination data available
- 45 cases were recorded as having received a COVID-19 vaccine (one or two doses)
- 18 had received all recommended doses of vaccine before admission to ICU
- 10 had an epidemiological date 14 days or more after receiving all recommended doses of vaccine (i.e. 5% of ICU cases where vaccination status known)

\*Data were extracted from CIDR on 17.08.2021 at 09:30



# Deaths



## Vaccination status amongst COVID-19 deaths (with date of death 1st April 2021 - 14th August 2021)\*



- 165 laboratory confirmed COVID-19 deaths were notified to HPSC with a date of death between 1st April 2021 and 14th August 2021
- 158 of these deaths had COVID-19 vaccination data reported
- 69 deaths were reported in persons having being vaccinated
- 68 deaths were reported in persons having received at least one dose of COVID-19 vaccine prior to death.
- 30 deaths were reported in persons having received all recommended doses of COVID-19 vaccine prior to death.
- 13 COVID-19 deaths were reported in persons with an epidemiological date 14 days or more after receiving all recommended doses of vaccine (i.e. 8% of deaths where vaccination status known)

\*Data extracted from CIDR on 16/08/2021 at 16:30



# Outbreaks & Clusters

## Outbreak Key Points (Week 33 2021 – to 21<sup>st</sup> August 2021):

Aggregate data on 105 outbreaks were reported to HPSC by regional Departments of Public Health for week 33 2021 – data are provisional.

- Eleven new nursing home outbreaks were reported with 56 confirmed linked cases
- Two new community hospital/long-term care facility outbreaks were reported with fifteen confirmed linked cases
- Five new acute hospital outbreaks reported with 13 confirmed linked cases
- Six new residential institution outbreaks reported with 15 confirmed linked cases, two in centres for disabilities, one in a prison, and three in nonspecified residential facilities
- One new outbreak in other healthcare services with two confirmed linked cases
- Sixteen workplace outbreaks were reported with 48 confirmed linked cases; including two in the meat/poultry processing sector, two in other food production and processing, five in construction sector and seven in 'other' workplaces
- Fourteen outbreaks were reported in childcare facilities with 47 confirmed linked cases
- Four travel-related (three flights and one ferry associated) outbreaks were reported with 14 confirmed linked cases
- Two outbreaks associated with social gatherings were reported with ten confirmed linked cases
- Four religious/other ceremony associated outbreaks with 13 confirmed linked cases
- Three new community outbreaks reported with 24 confirmed linked cases
- Five outbreaks related to retail outlets with 13 confirmed linked cases
- Eight outbreaks related to hotels with 20 confirmed linked cases
- Ten restaurant/café outbreaks with 33 confirmed linked cases
- Three outbreaks related to public houses with 16 confirmed linked cases
- The remaining eleven outbreaks were across other locations: other recreation activity (n=1); extended family (n=4); private houses (n=5) and other locations (n=1)
- Nine reported outbreaks (extended family=4, private house=2, community , outbreak=3) involved Irish Travellers with 47 confirmed cases.



**Source: HPSC**

# Acute operations

For the week ending 8<sup>th</sup> August there were 16 open outbreaks and 122 new laboratory confirmed cases in acute hospital staff.

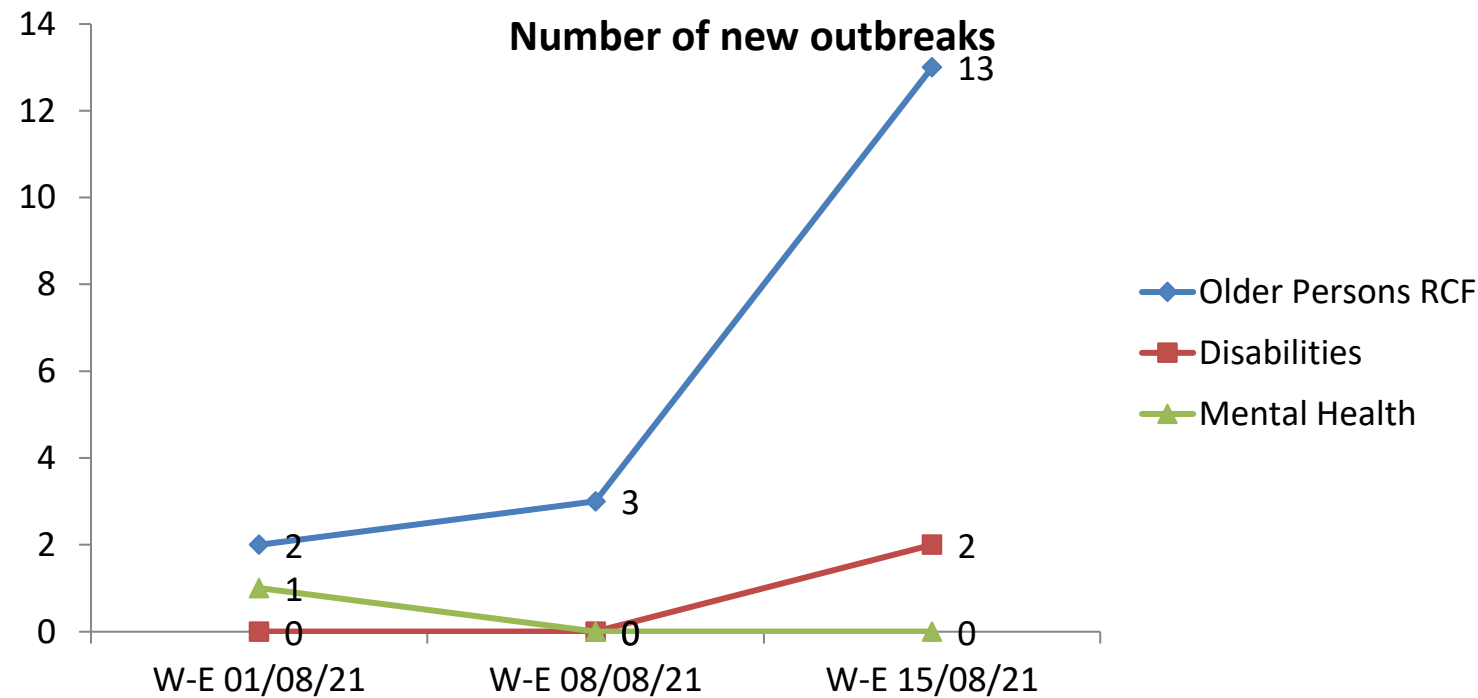
Week ending	No. of hospital acquired COVID-19 cases (patients)
9 <sup>th</sup> May 2021	Data not available
16 <sup>th</sup> May 2021	0
23 <sup>rd</sup> May 2021	0
30 <sup>th</sup> May 2021	0
6 <sup>th</sup> June 2021	1
13 <sup>th</sup> June 2021	2
20 <sup>th</sup> June 2021	0
27 <sup>th</sup> June 2021	0
04 <sup>th</sup> July 2021	2
11 <sup>th</sup> July 2021	0
18 <sup>th</sup> July 2021	16
25 <sup>th</sup> July 2021	13
1 <sup>st</sup> August 2021	13
8 <sup>th</sup> August 2021	42
15 <sup>th</sup> August	21

Indicator	Week ending 01-08-2021	Week ending 08-08-2021	Week ending 15-08-2021
No. hospital acquired COVID-19 cases	13	42	21
No. currently Open outbreaks	11	14	16
No. new laboratory confirmed cases in hospital staff	69	107*	122

\*data validated was reported as 102 and validated to 107

Source: AMRIC

# Community operations



Source: AMRIC





# Test & Trace Update

## Test and Trace update



- From 17<sup>th</sup>-23<sup>rd</sup> August, there were approximately 131,893 lab tests reported in community, private and acute labs. This remains a partial view until both acute and private lab data flows are fully reinstated.
- From the 17<sup>th</sup>-23<sup>rd</sup> August, there were c. 103,806 community referrals. Overall, total referrals have remained stable in comparison to the same time period last week (0.38% increase)
- Over the past week, c. 90.5% of people received a swabbing appointment in less than 24 hours. The median time to get access to swabbing is 0.2 days.

In the community, over the last 7 days (17<sup>th</sup>-23<sup>rd</sup> Aug), the median end-to-end turnaround time from referral to:

- SMS for **not detected and detected** tests was **1 day**
- Communication of a **detected result by call** was **1.7 days**
- Contact tracing completed, for **detected results** was **2 days**

## CMP update – 16<sup>th</sup> -22<sup>nd</sup> August



- The **total number of close contacts** reported by the CMP was **29,375**, a decrease of 6% from 30,987 the previous week. The average number of close contacts reported per day was 4,196, down from 4,427 the previous week.
- Of the 20,181 close contacts with self-reported vaccination status recorded, 43.1% (n=8,695) were fully vaccinated, 10.5% (n=2,129) had received the full schedule of vaccines but were not fully protected due to insufficient time post-vaccination or because of a medical reason, and 5.5% (n=1,107) were partially vaccinated.
- The mean number of close contacts per case (including cases with zero close contacts) was 2.3, a decrease from 2.4 the previous week.
- When close contacts categorised as fully vaccinated with significant protection were excluded, the mean number of close contacts per case was 1.4.

# Variants update

## Total confirmed variants of concern cases:

- P.1 (Gamma): 30
- B.1.351 (Beta): 77
- B1.617.2 (*Delta*): 6496

## Total of other confirmed variants of note/of interest cases:

- B.1.617.1 (Kappa): 210
- B.1.525 (Eta): 74
- B.1.526 (Iota): 11
- P.2 (Zeta): 15
- B.1.429 (Epsilon): 7
- B.1.1.318: 245
- C.37 (Lambda): 4
- B.1.1.7 with E484K mutation: 2
- A.27: 2

*(Based on latest NVRL results as of 23<sup>rd</sup> Aug 2021)*

## S gene target positive prevalence



Wk 27: 81.7%

Wk 28: 90.4%

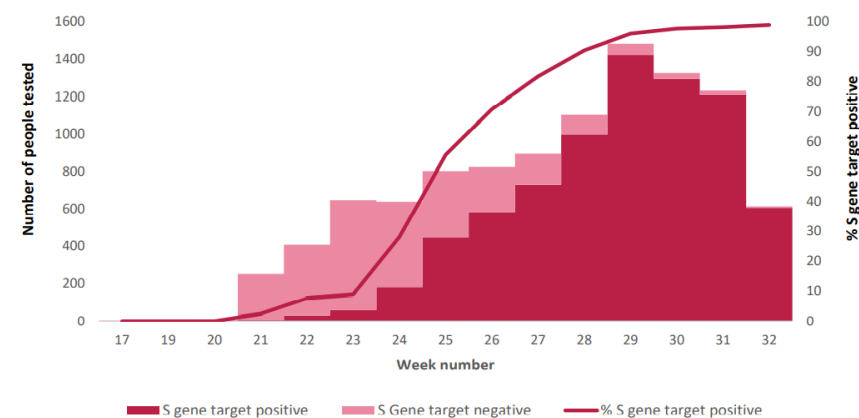
Wk 29: 96%

Wk 30: 97.7%

Wk 31: 98.2%

Wk 32: 98.9%\*

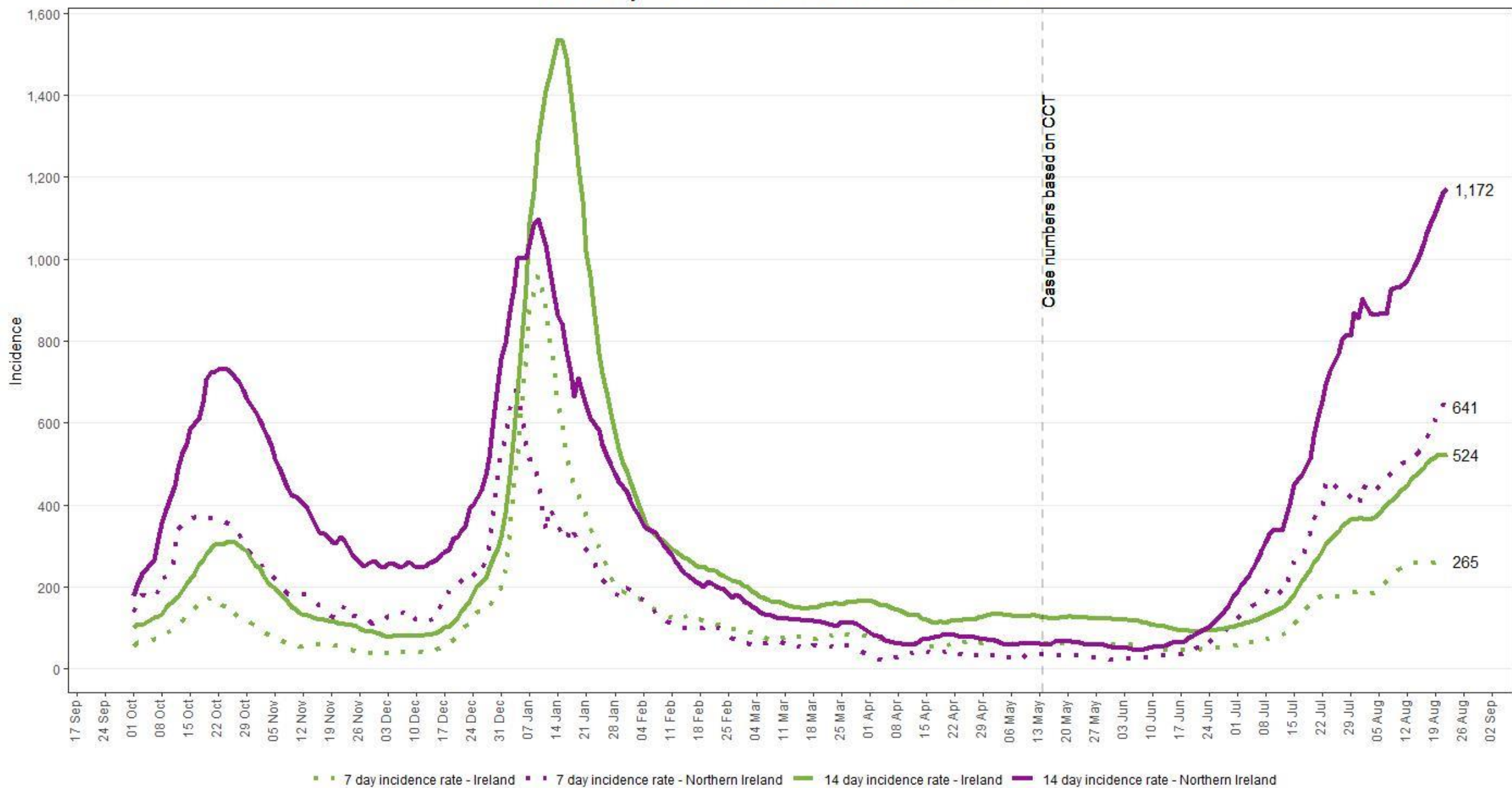
## TaqPath S gene target results by specimen week



Source: HPSC

\*partial week 32 to 11<sup>th</sup> Aug

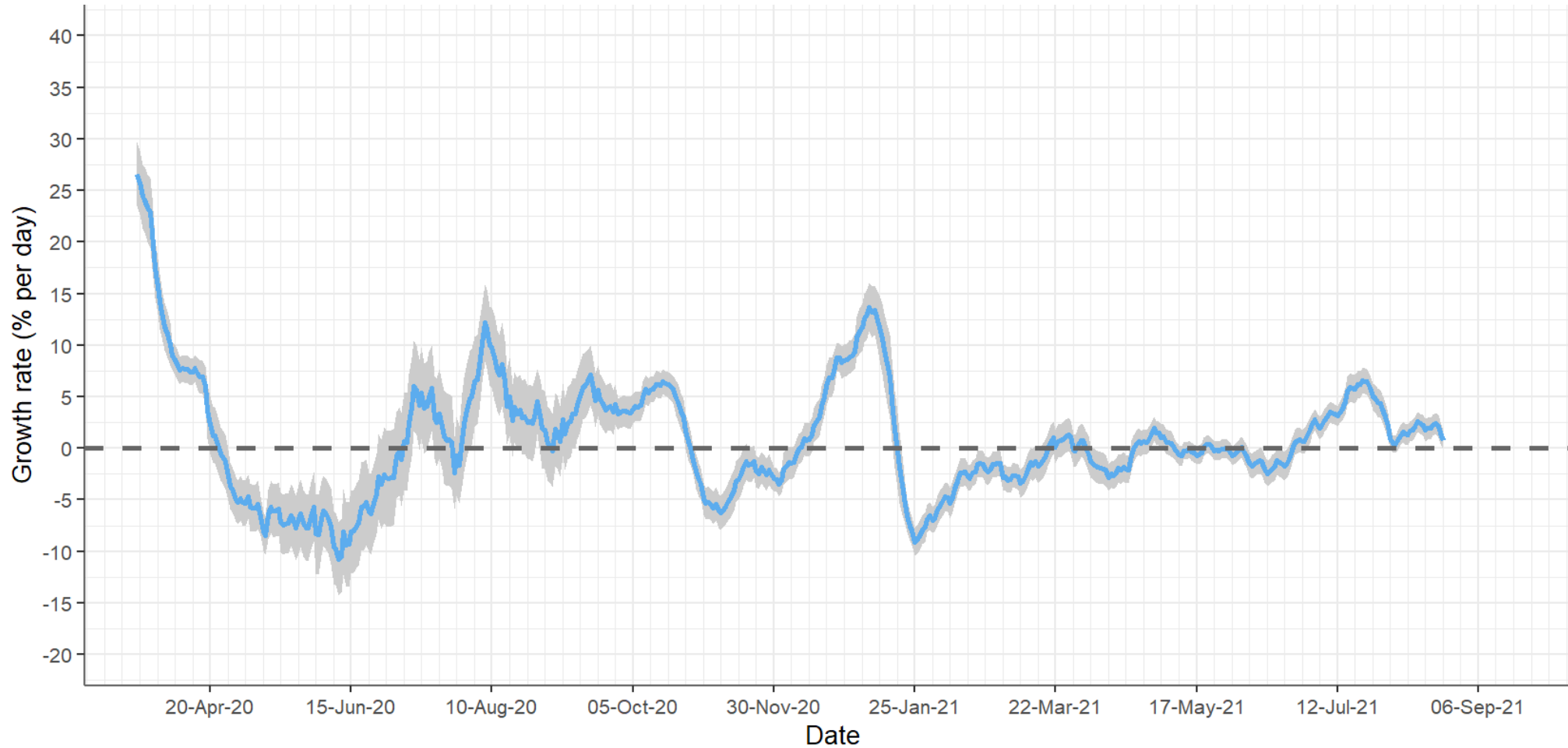
7 and 14 day Incidence rates for Ireland and Northern Ireland



Due to the cyber attack on the HSE's IT systems, daily case numbers from 14 May onwards are based on a data extract from the Covid Care Tracker.  
Source: health-ni.gov.uk daily data 22/08/21. Incidence calculated using the 2016 population estimates for both ROI and NI.

# Growth rate

Growth rate has been unstable during the summer, and exceeded 5% per day (doubling time 14 days) in July; growth rate is currently estimated at 0.7% (-0.2 – 1.7) per day



CIDR data to midnight Wed 12 May 2021 and CCT data to midnight Mon 23 Aug 2021. Cases dated by event creation / case creation date. Growth rate in case counts using a 21-day window, cases dated by event (notification) date. Mean and 95% confidence intervals

# Situation analysis 24 August 2021



- **Incidence high**  
Cases (7-day average) **1822 cases per day**; 14-day incidence **526 per 100,000**
  - $\approx$  20 admissions to hospital per 1000 cases
- Growth rate uncertain
  - Cases 0-2% per day (doubling time 35-100 days)
  - Numbers in hospital 2-4% per day (doubling time 19-33 days)
- High and increasing levels of protection by vaccination
  - 4-6 weeks to reach maximum population protection
  - > 80% of the adult population vaccinated, **70-75% protected**
  - 53% of the population aged 16-29 years are vaccinated, with **40-45% protected**
- Incidence may start to plateau in coming weeks
  - though we should expect at least transient increases in incidence with the with increased mobility and mixing associated with the reopening of schools and higher education
- The trajectory over the next period remains uncertain
  - **any further increase in social mixing or potential for super-spreading is a significant risk**



# European Data

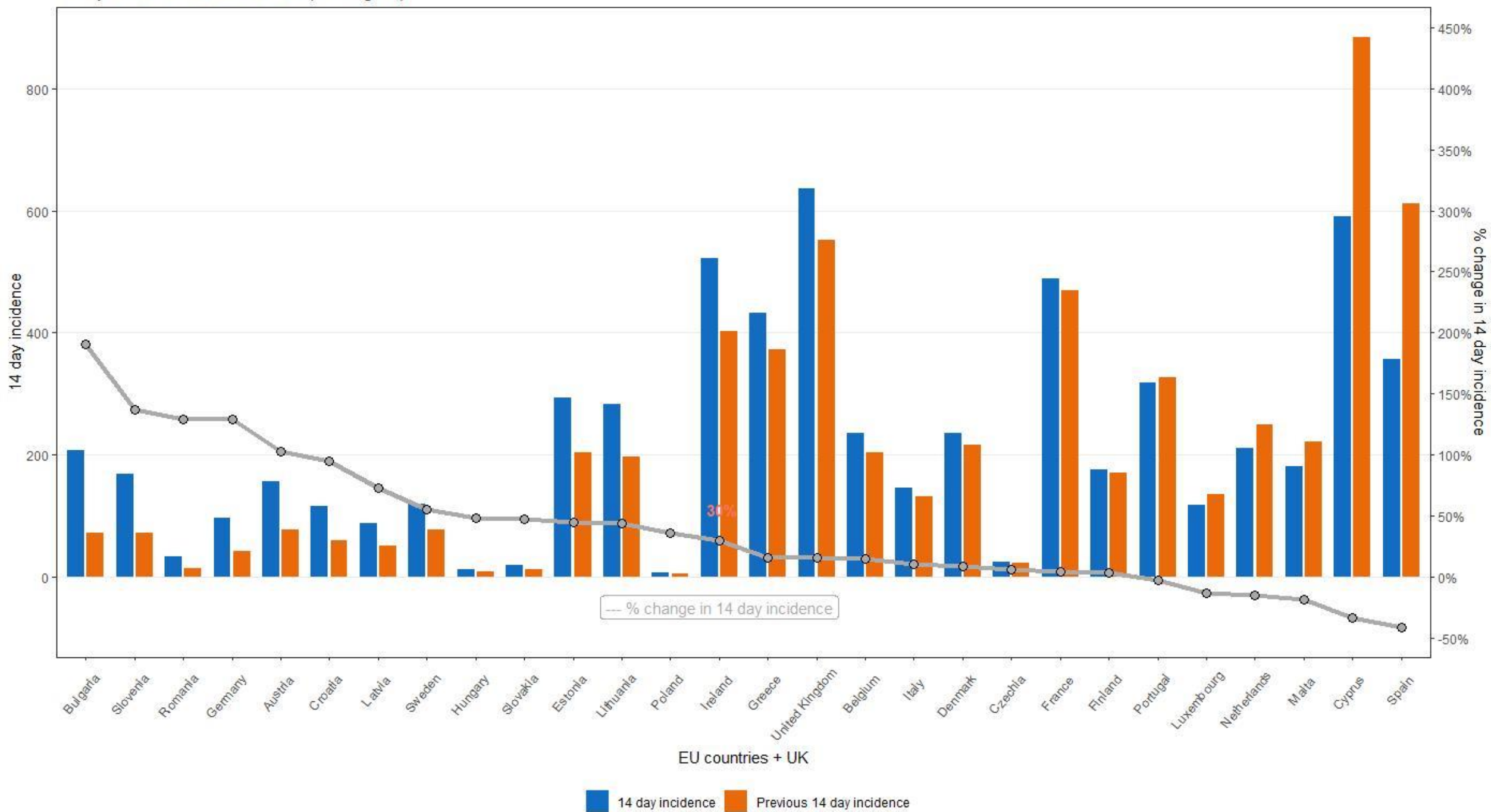


## EU/UK ranked by 14 day incidence (23rd August)

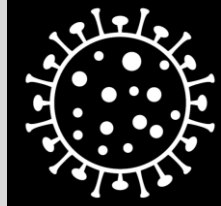
EU and the UK	14 day incidence	Previous 14 day incidence	% change in 14 day incidence
United Kingdom	636.72	552.16	15%
Cyprus	589.86	885.02	-33%
<b>Ireland**</b>	<b>522.02</b>	<b>402.64</b>	<b>30%</b>
France	487.83	468.84	4%
Greece	431.99	372.35	16%
Spain	356.29	611.09	-42%
Portugal	318.58	327.48	-3%
Estonia	294.22	203.46	45%
Lithuania	282.04	196.34	44%
Denmark	235.7	216.43	9%
Belgium	234.89	204.34	15%
Netherlands	211.21	249.08	-15%
Bulgaria	206.71	71.15	191%
Malta	180.54	221.55	-19%
Finland	176.17	169.96	4%
Slovenia	168.74	71.29	137%
Austria	156.23	77.17	102%
Italy	145.81	132.46	10%
Sweden	119.28	76.63	56%
Luxembourg	117.42	134.83	-13%
Croatia	115.68	59.46	95%
Germany	97.35	42.52	129%
Latvia	87.8	50.79	73%
Romania	32.44	14.16	129%
Czechia	24.36	23	6%
Slovakia	18.94	12.89	47%
Hungary	11.49	7.75	48%
Poland	6.98	5.13	36%

- As of 16<sup>th</sup> Dec, this daily data is now sourced from Our World In Data (OWID) instead of ECDC as they have switched to weekly reporting (Thursday evenings).
- OWID source their confirmed cases and deaths data from the COVID-19 Data Repository by the Center for Systems Science and Engineering (CSSE) at Johns Hopkins University (JHU). <https://github.com/owid/covid-19-data/tree/master/public/data>
- **\*\*Due to the cyber attack on the HSE's IT systems, daily case numbers from 14 May onwards are based on a data extract from the Covid Care Tracker.**

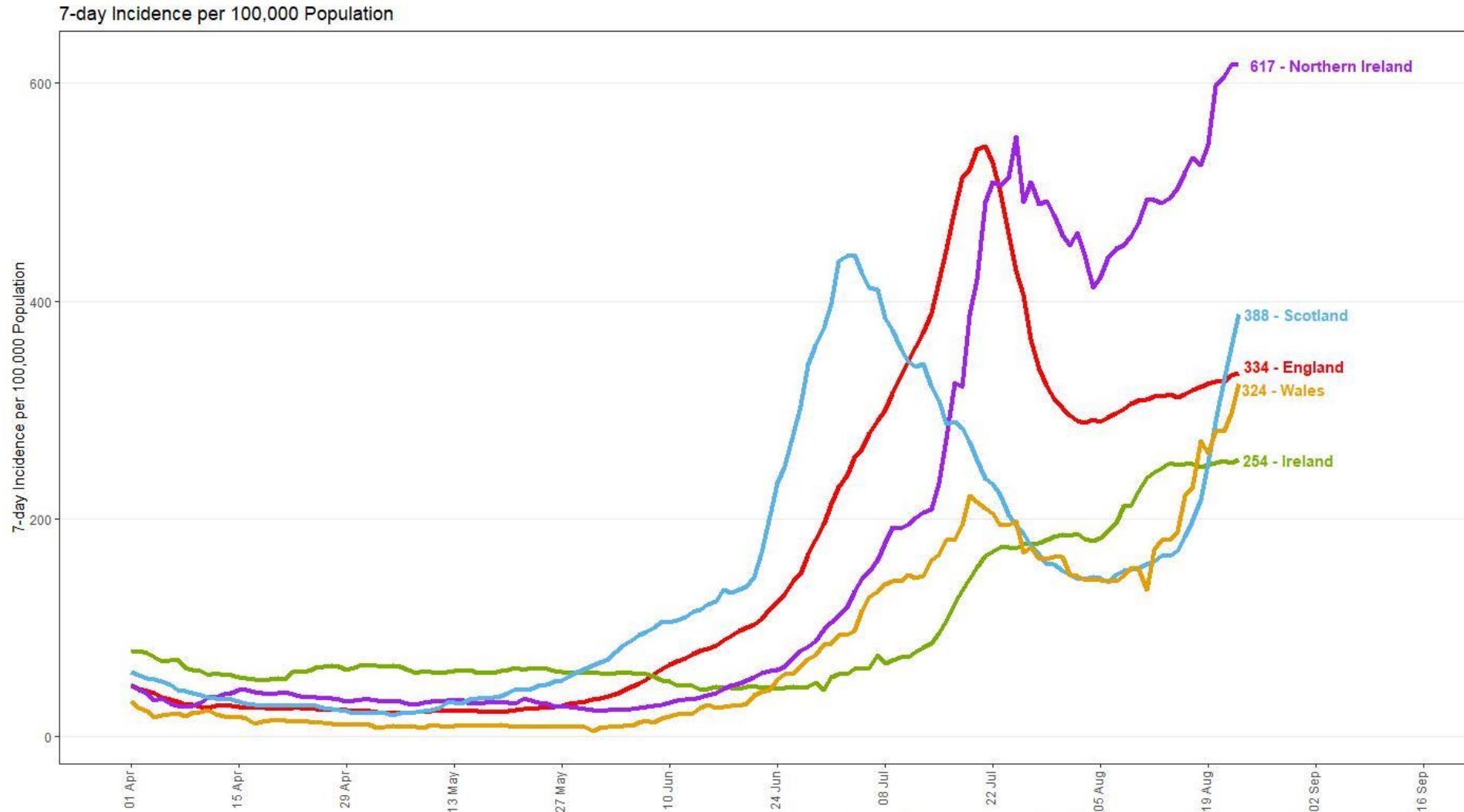
European 14 incidence rates (23 August)



# United Kingdom



Coronavirus  
**COVID-19**  
Public Health  
Advice

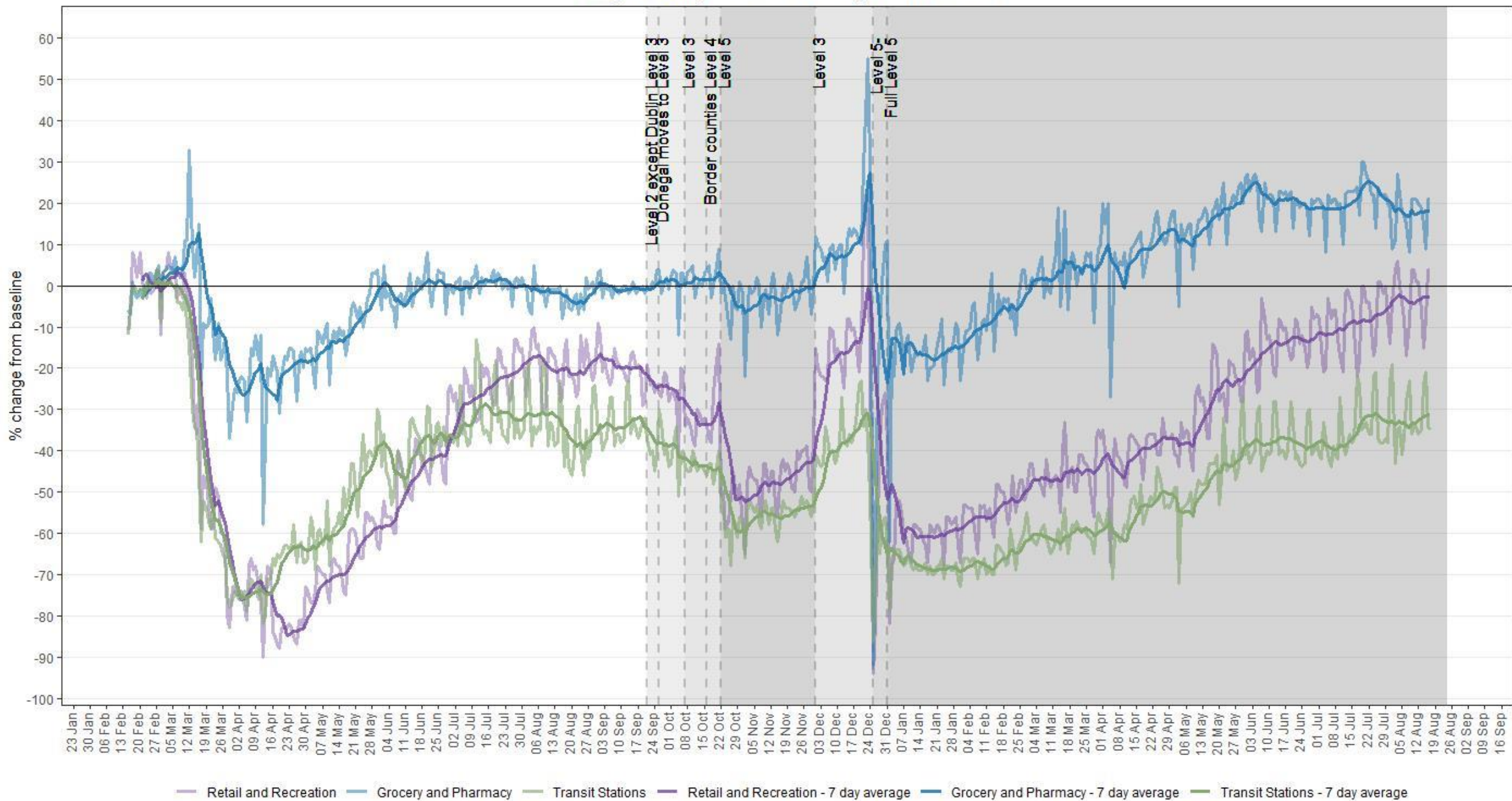


Rialtas na hÉireann  
Government of Ireland



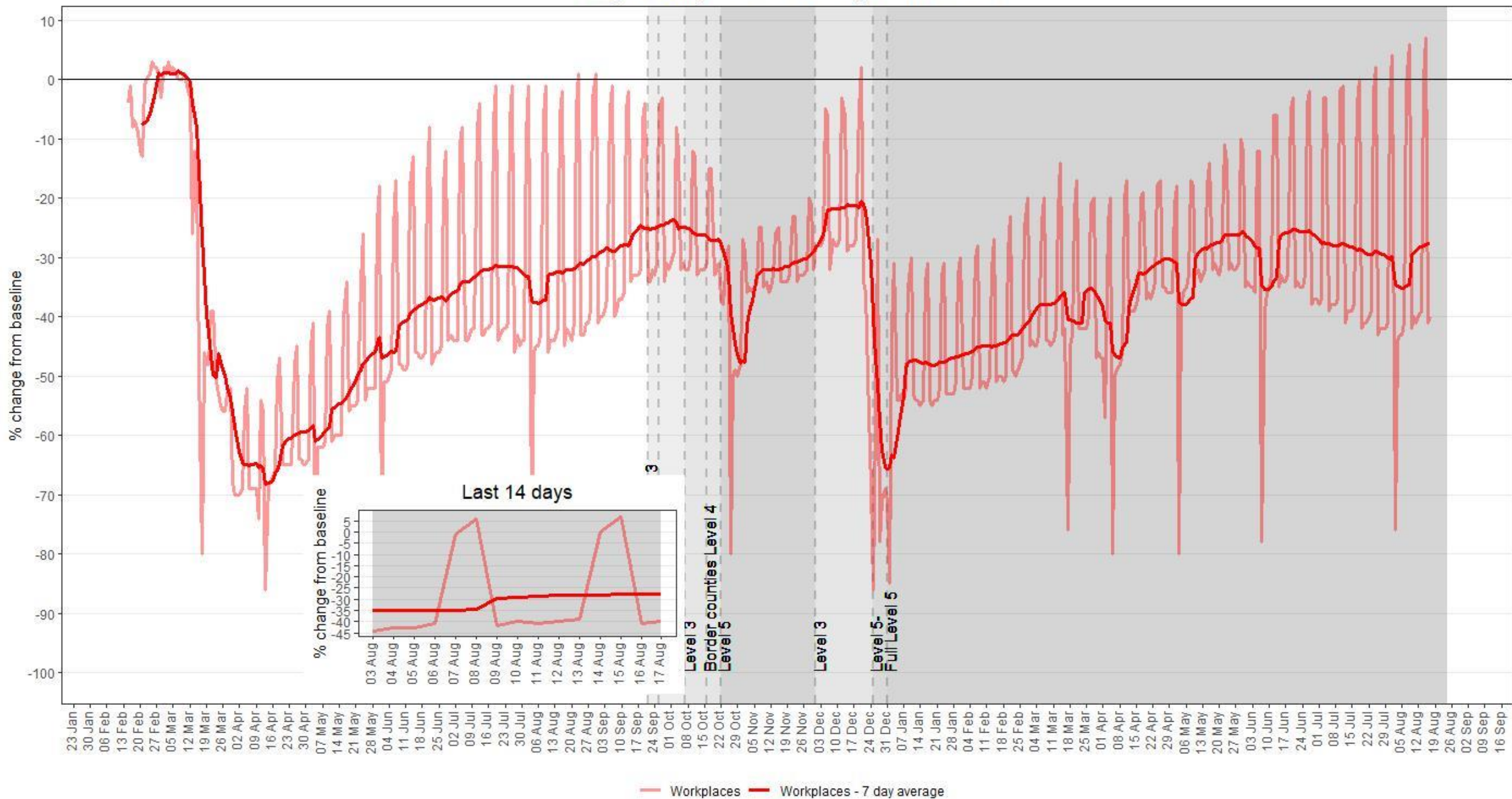
# Mobility Data

Google Mobility Ireland - % change from baseline





# Google Mobility Ireland - % change from baseline



Apple Mobility Ireland - % change from baseline

