



An Roinn Sláinte  
Department of Health

# NPHET COVID Update 27<sup>th</sup> July 2021

# Current situation



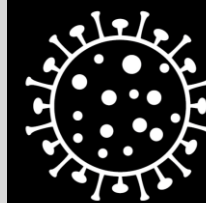
	01-Oct	26-Oct (2 <sup>nd</sup> wave peak 14 day inc.)	01-Dec	03-Dec (lowest 14 day inc.)	01-Jan	14-Jan (3 <sup>rd</sup> wave peak 14 day inc.)	19-Jul (1 week ago)	26-Jul
14-day incidence	96.08	310.87	88.31	80.85	321.68	1499.81	228.40	332.98
5-day average cases	407.0	933.2	264.6	265.4	1481.0	4485.4	1142.0	1271.4
Total weekly cases	2,607	7,102	1,927	1,776	9,445	35,517	7059	8797

	01-Oct	26-Oct (2 <sup>nd</sup> wave peak 14 day inc.)	01-Dec	03-Dec (lowest 14 day inc.)	01-Jan	14-Jan (3 <sup>rd</sup> wave peak 14 day inc.)	19-Jul (1 week ago)	26-Jul
No. Hospital (8.A.M)	122	344	224	234	508	1792	101	141
No. in ICU (11.30 A.M)	20	40	31	31	42	172	20	25

	JAN21	FEB21	MAR21	APR21	MAY21	JUN21	JUL21	Total Deaths since MAR20
Deaths by month of death (as at 21/07/201)	1418	895	255	93	36	11	4	5026

# Cases, numbers in hospital and intensive care

Case counts have increased very rapidly in recent weeks, and the number of people in hospital has doubled; numbers in ICU are also starting to increase



Coronavirus  
**COVID-19**  
Public Health  
Advice

	Apr 2020	Summer 2020	Oct 2020	Dec 2020	Jan 2021	Jun 2021	5 Jul	12 Jul	19 Jul	26 Jul	Daily count 26 Jul
Cases confirmed per day	859 <small>18-04</small>	8.7 <small>25-06</small>	1158 <small>21-10</small>	262 <small>12-12</small>	6516 <small>10-01</small>	308 <small>19-06</small>	439	545	1108	1256	1345
14-day incidence <i>per 100,000 population</i>	212 <small>19-04</small>	3.0 <small>04-07</small>	306 <small>26-10</small>	79 <small>09-12</small>	1528 <small>15-01</small>	91 <small>20-06</small>	115	145	228	333	
Hospital in-patients	862 <small>17-04</small>	9 <small>02-08</small>	333 <small>01-11</small>	198 <small>16-12</small>	1949 <small>24-01</small>	43 <small>29-06</small>	46	57	81	108	141
<i>Hospital admissions per day</i>	85 <small>04-04</small>	<1 <small>10-07</small>	27 <small>26-10</small>	11 <small>13-12</small>	158 <small>15-01</small>	6 <small>27-06</small>	8	8	17	22	30
ICU confirmed cases	150 <small>14-04</small>	4 <small>04-08</small>	43 <small>04-11</small>	26 <small>27-12</small>	217 <small>28-01</small>	13 <small>27-06</small>	14	16	21	22	25
<i>ICU admissions per day</i>	14 <small>31-03</small>	<1 <small>03-06</small>	4 <small>03-11</small>	1 <small>16-12</small>	20 <small>17-01</small>	<1 <small>02-07</small>	<1	1	1	2	6
Deaths confirmed per day	46 <small>22-04</small>	<1 <small>30-07</small>	7 <small>01-12</small>	4 <small>17-12</small>	57 <small>03-02</small>	-	-	-	-	-	-

Data are 7-day averages (the indicated day and the preceding 6 days, rounded to the nearest whole number) with the exception of 14 day cumulative incidence, which is the total number of cases in the preceding 14 days per 100,000 population. The highest and lowest values of each indicator are given for each wave of the pandemic, along with the date on which that value was recorded, as well as the data for recent weeks. The historic incidence data may change due to denotification of cases. Case data from 13 May 2021 onward are estimates based on the number of positive tests reported. Data on deaths is incomplete and not reported



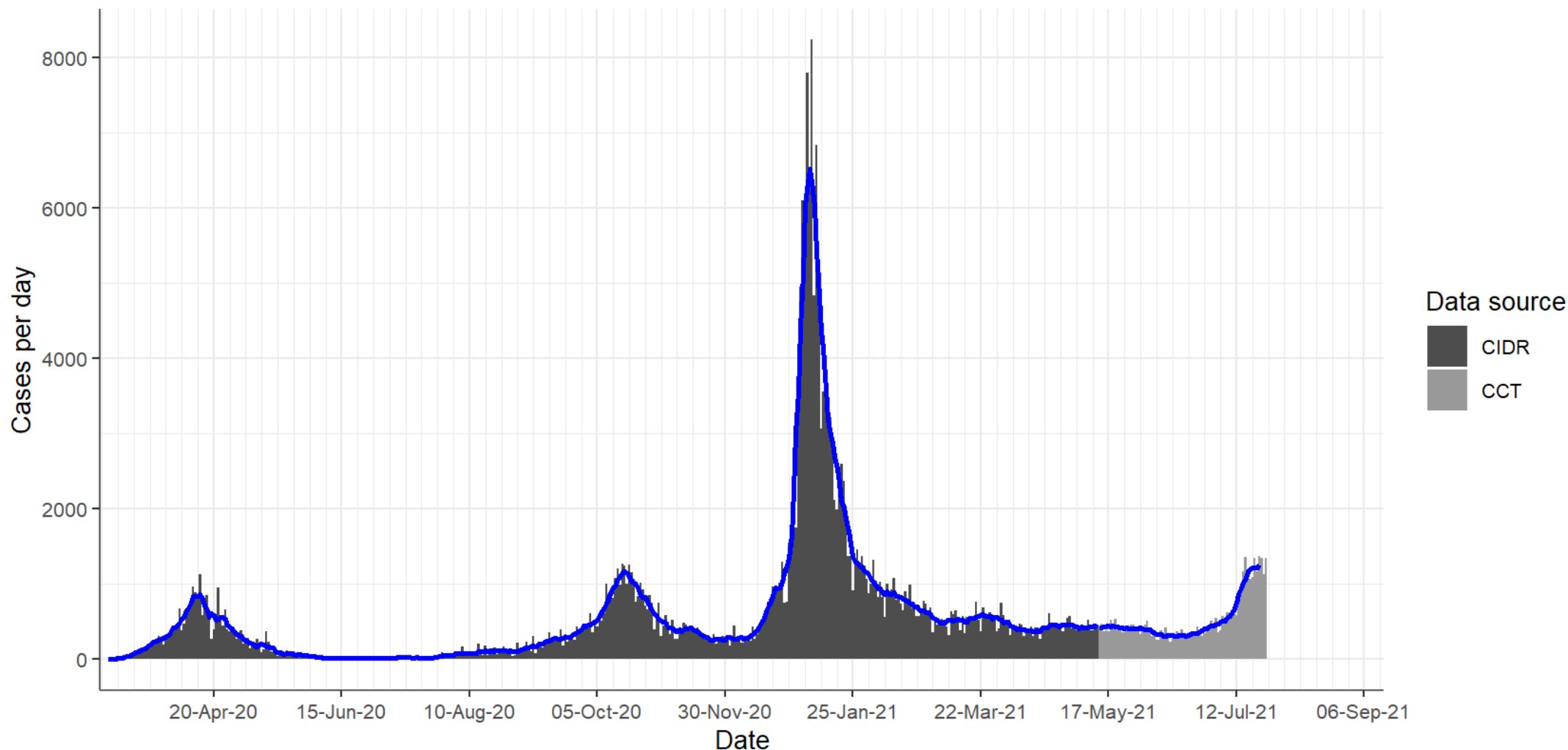
Rialtas na hÉireann  
Government of Ireland



# Cases & Incidence Rates

# Confirmed cases each day

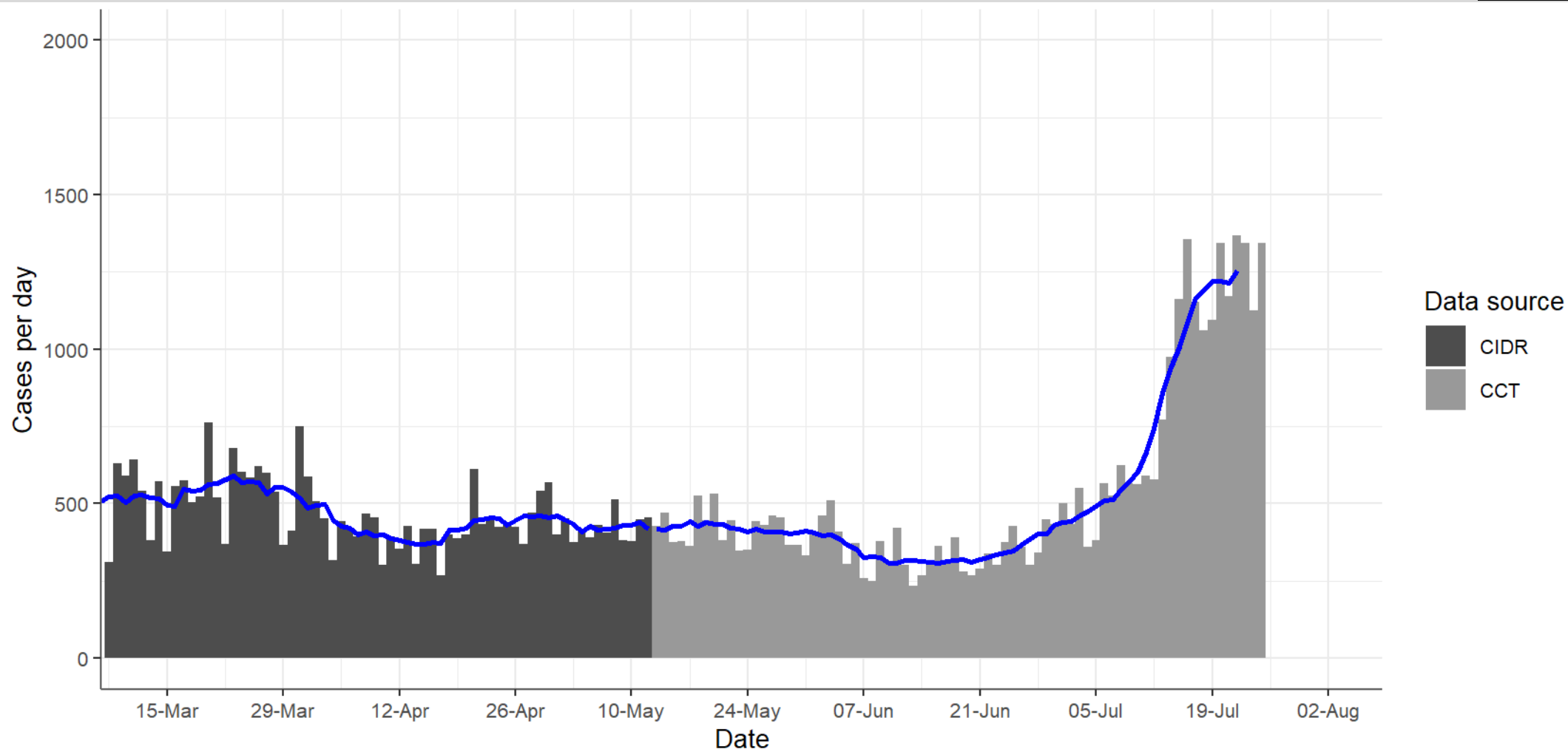
Daily count and 7-day rolling average. The 7-day average peaked at 1158 on 21 October, reached a low of 262 on 12 December, peaked again at 6520 on 10 January. There was a long period in April and May where case counts were stable or decreasing, reaching a low of approximately 300 per day in the week beginning 21 June 2021; incidence is now clearly increasing and the 7-day average is now **1256, up from 1008** seven days ago, and **545** two weeks ago.



Daily count (bars) and 7-day average (line) of the number of laboratory confirmed new cases by date on which they were notified HPSC. Case counts may change due to denotification of cases. Case data from 13 May 2021 onward are provisional based on the number of positive tests reported through the HSE contact management programme

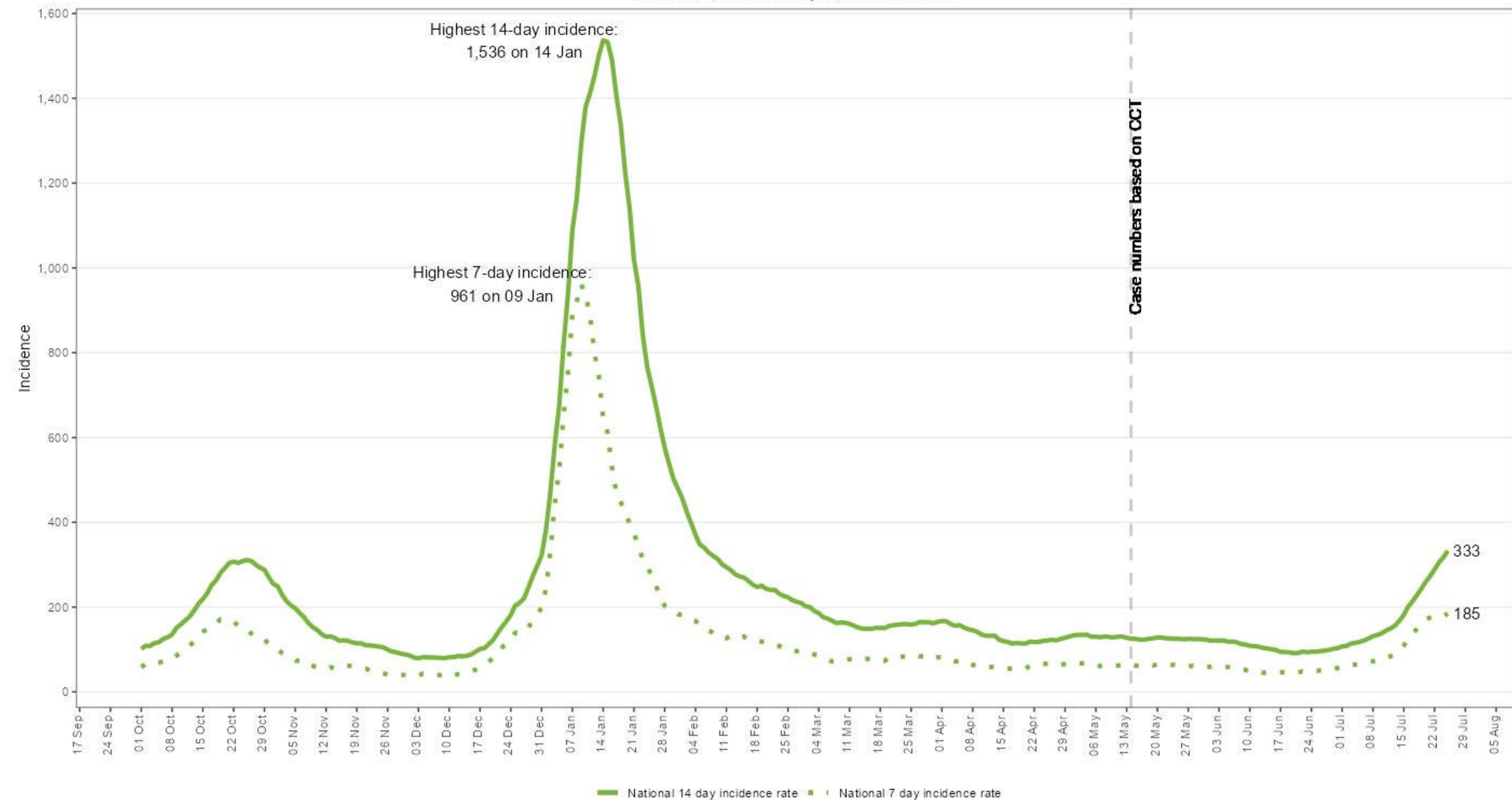
# Confirmed cases each day

Daily count and 7-day rolling average in recent weeks. There was a long period in April and May where case counts were stable or decreasing, reaching a low of approximately 300 per day in the week beginning 21 June 2021; incidence is now clearly increasing and the 7-day average is now **1256, up from 1008** seven days ago, and **545** two weeks ago.



Daily count (bars) and 7-day average (line) of the number of laboratory confirmed new cases by date on which they were notified HPSC. Case counts may change due to denotification of cases. Case data from 13 May 2021 onward are provisional based on the number of positive tests reported through the HSE contact management programme

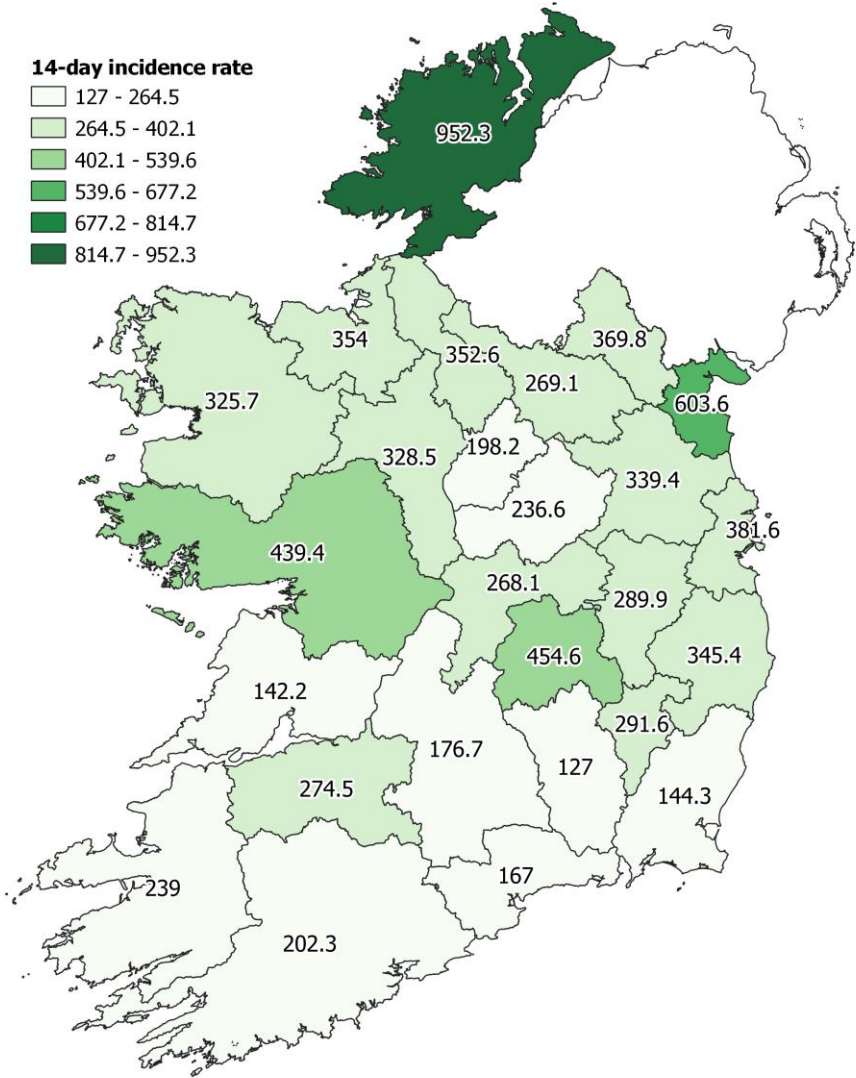
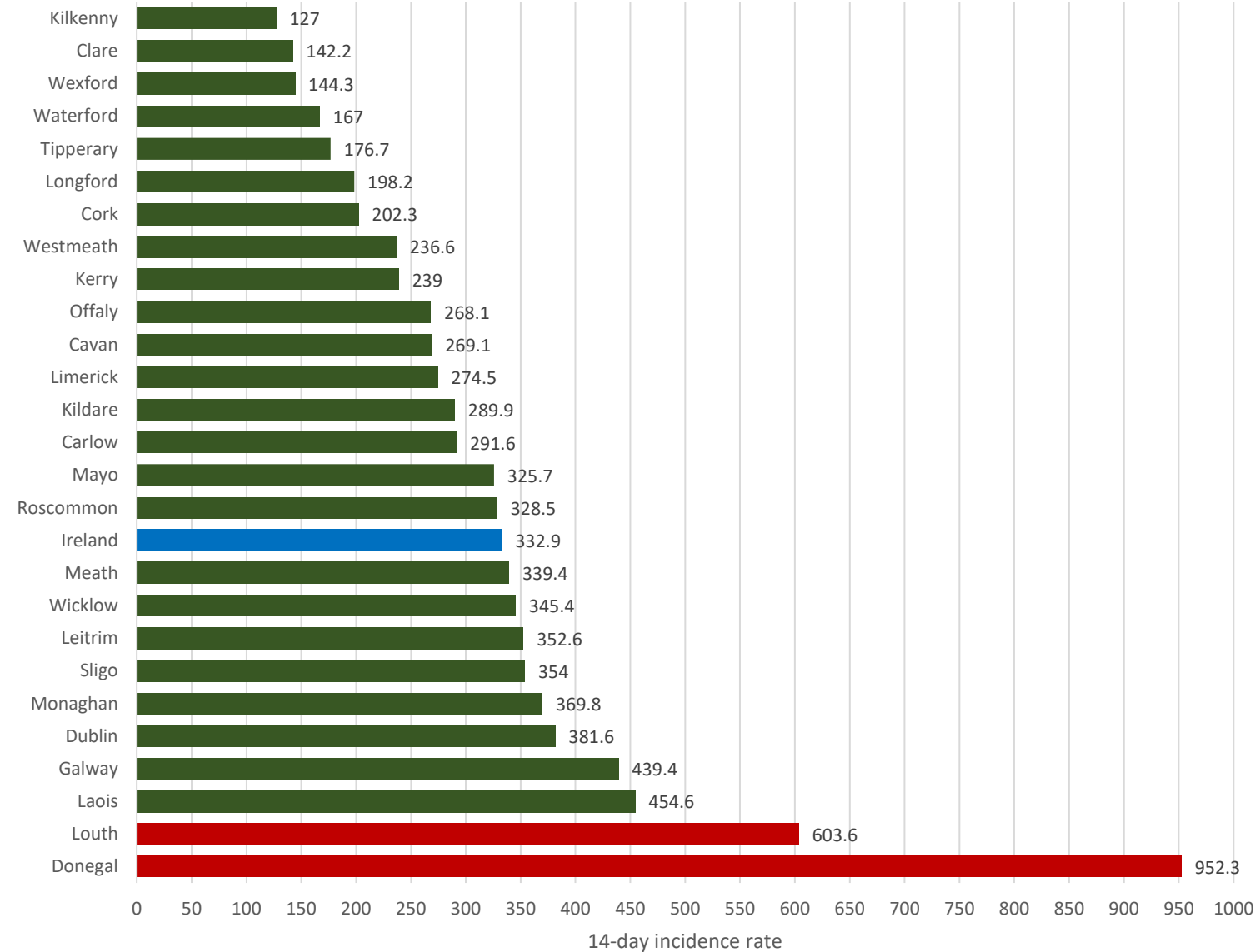
National 7 and 14 day Incidence rates



Due to the cyber attack on the HSE's IT systems, daily case numbers from 14 May onwards are based on a data extract from the Covid Care Tracker. Updated 26 July

14-day incidence rate per 100,000 population  
(for cases in 14 days up to midnight 25/07/2021)

14-day Incidence Rate per 100,000 population reported on 26/07/2021

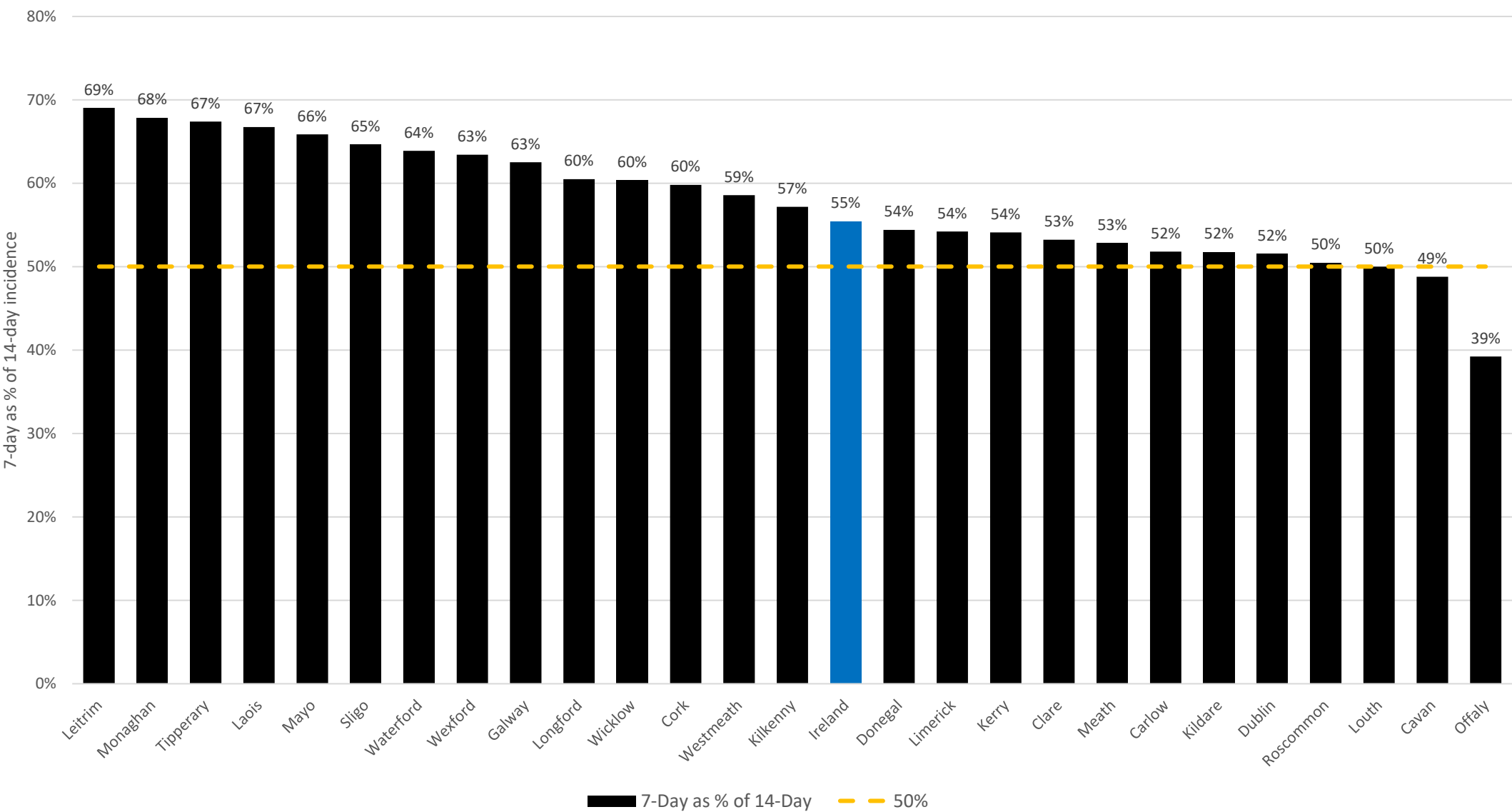


Source: Prepared by Department of Health based on data from HPSC, Epidemiology of COVID-19 in Ireland - HPSC interim 14-day report on cases uploaded to the COVID Care Tracker

Note: Data included in this map are based on SARS CoV-2 results uploaded to the COVID Care Tracker. These data are provisional and subject to ongoing review, validation and update. Population based on Census 2016.



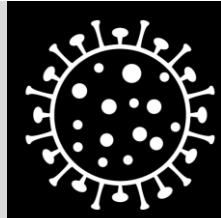
7-day incidence as a % of 14-day incidence



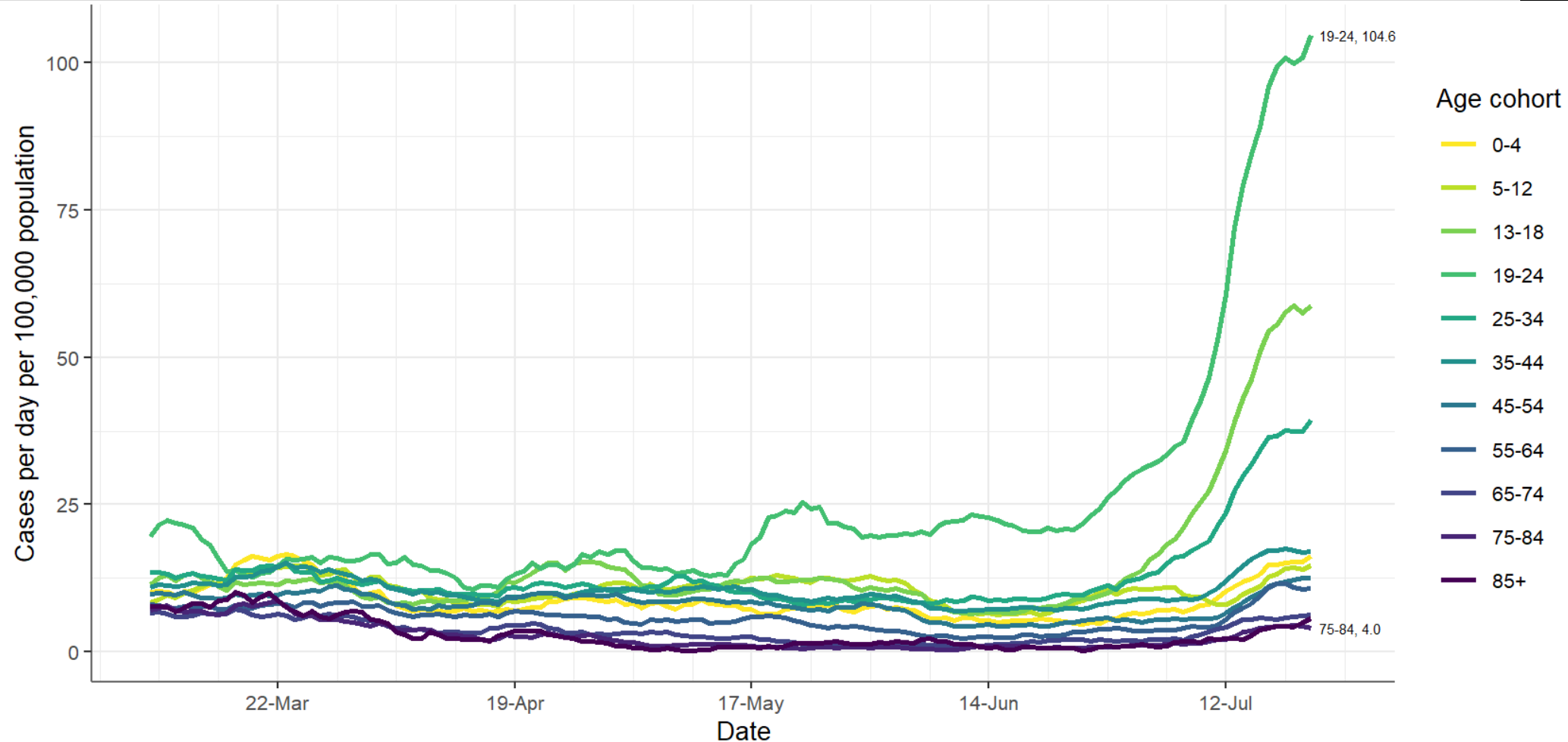
Source: HPSC 14-day report (CCT) 26/07/2021.

# Age-specific incidence

Incidence has risen very rapidly in young adults, most markedly in those aged 19-24 years, but also in those aged 25-34 years and in adolescents, where most of the increase is accounted for by the 16-18 year old group.



Coronavirus  
**COVID-19**  
Public Health  
Advice



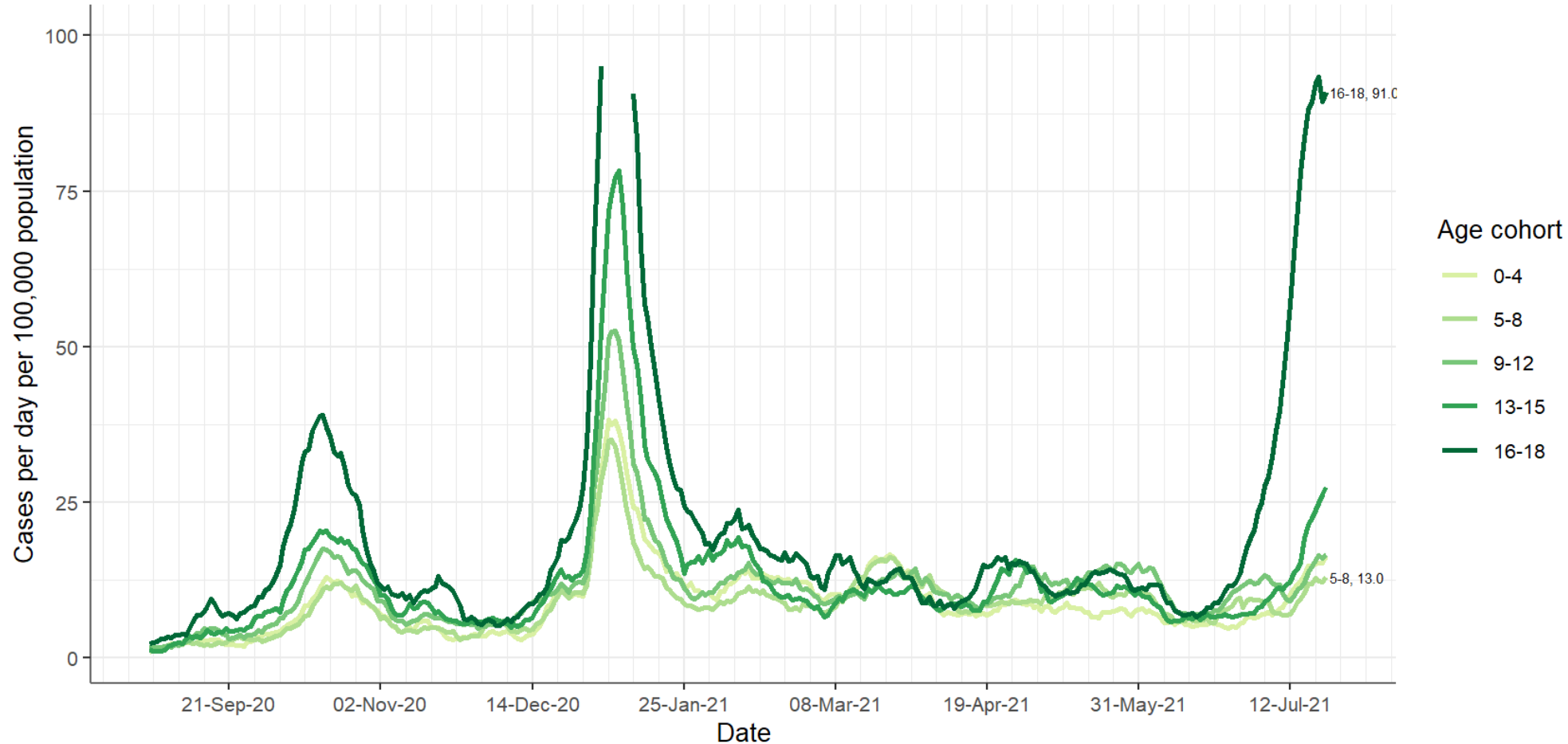
Age-specific incidence (cases per day per 100,000 population). 7-day moving average.  
CIDR data to midnight Wed 12 May 2021 and CCT data to midnight Sun 25 Jul 2021. Cases dated by event creation / case creation date



Rialtas na hÉireann  
Government of Ireland

# Age-specific incidence – children and adolescents

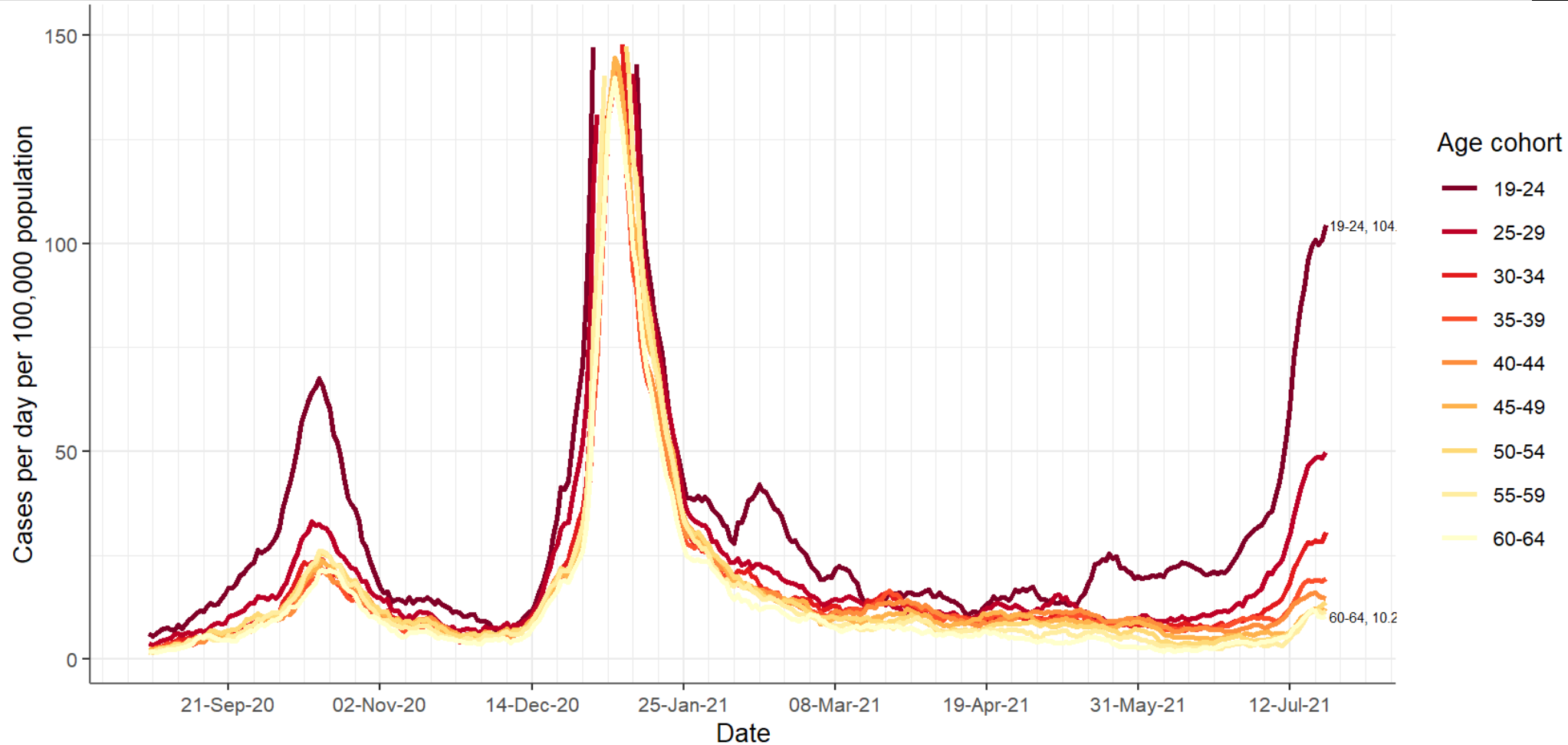
Incidence has risen very rapidly in those aged 16-18 years, and is now increasing in those aged 13-15 years.



Age-specific incidence (cases per day per 100,000 population). 7-day moving average.  
CIDR data to midnight Wed 12 May 2021 and CCT data to midnight Sun 25 Jul 2021. Cases dated by event creation / case creation date

# Age-specific incidence – adults aged 19-64 years

Incidence has risen very rapidly in those aged 19-24, 25-29 and 30-34 years.

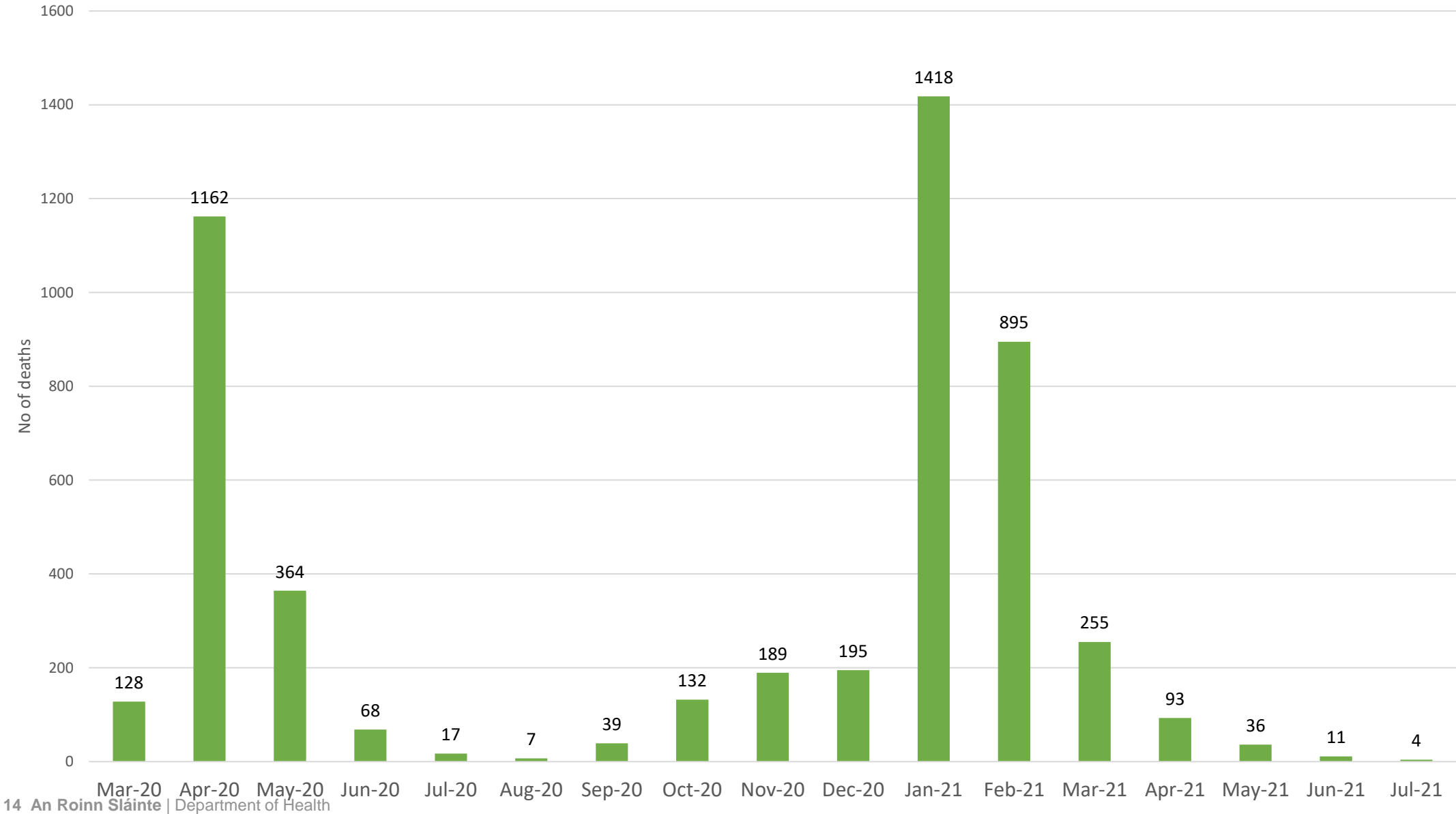


Age-specific incidence (cases per day per 100,000 population). 7-day moving average.  
CIDR data to midnight Wed 12 May 2021 and CCT data to midnight Sun 25 Jul 2021. Cases dated by event creation / case creation date



# Deaths

Total deaths by month 2021 (by date of death)





## Vaccination status amongst COVID-19 deaths

65 COVID-19 deaths were reported to HPSC between 14/05/2021-06/07/2021. COVID-19 vaccination status was known for 58 of these deaths:

- 24 persons who died had been vaccinated (either one or two doses).  
Of these:
- 13 had received one dose
- 11 had received two doses - 2 of these 11 persons had a date of diagnosis more than 14 days after receiving the second dose.

Source: HPSC



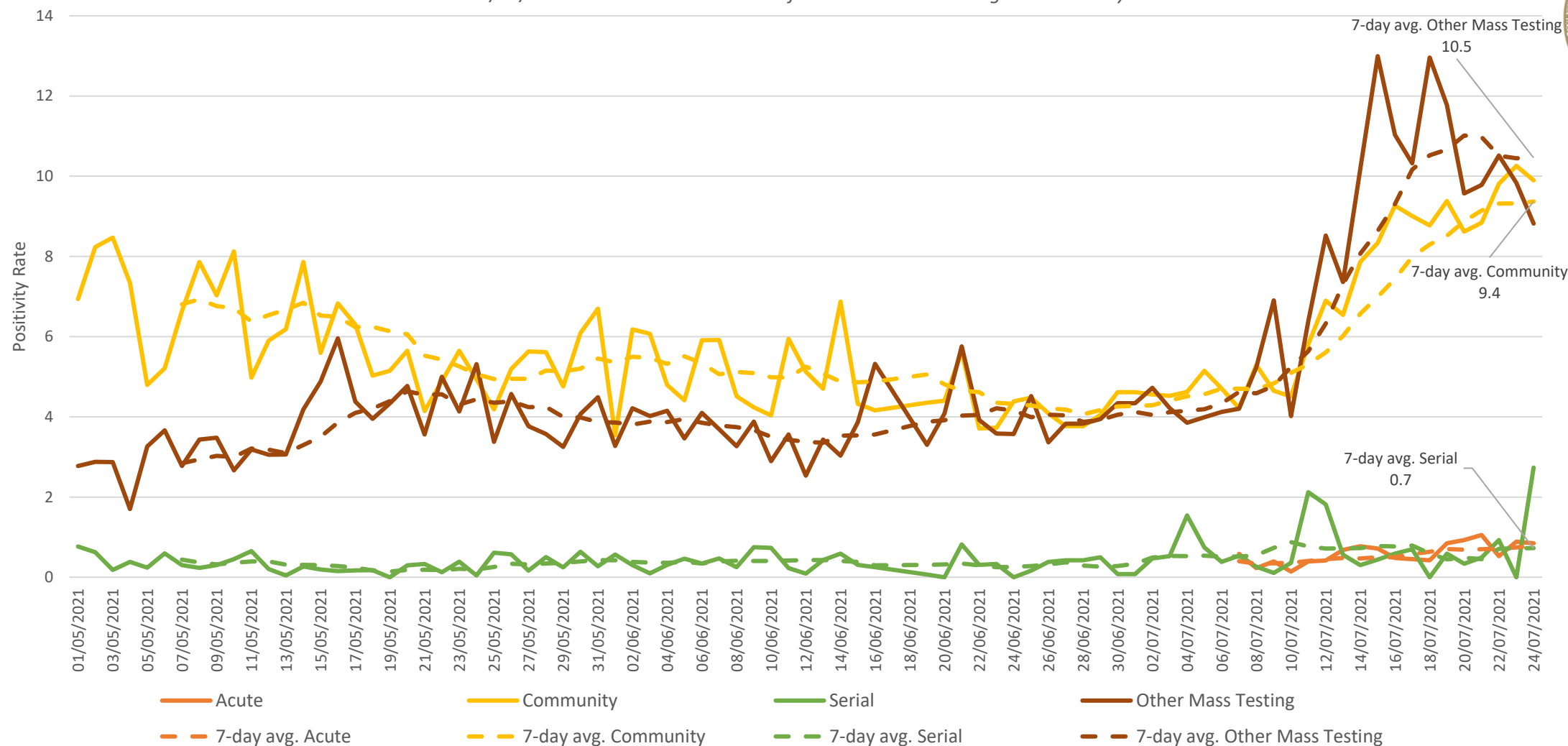
# Testing



## Positivity Rate and 7-day Moving Average by Testing Pathway

\*Data from Acute Hospital testing limited since 14/05/2021, gradual restoration from 06/07/2021

\*From 15/07/2021 walk-in tests reallocated from Other Mass Testing to Community

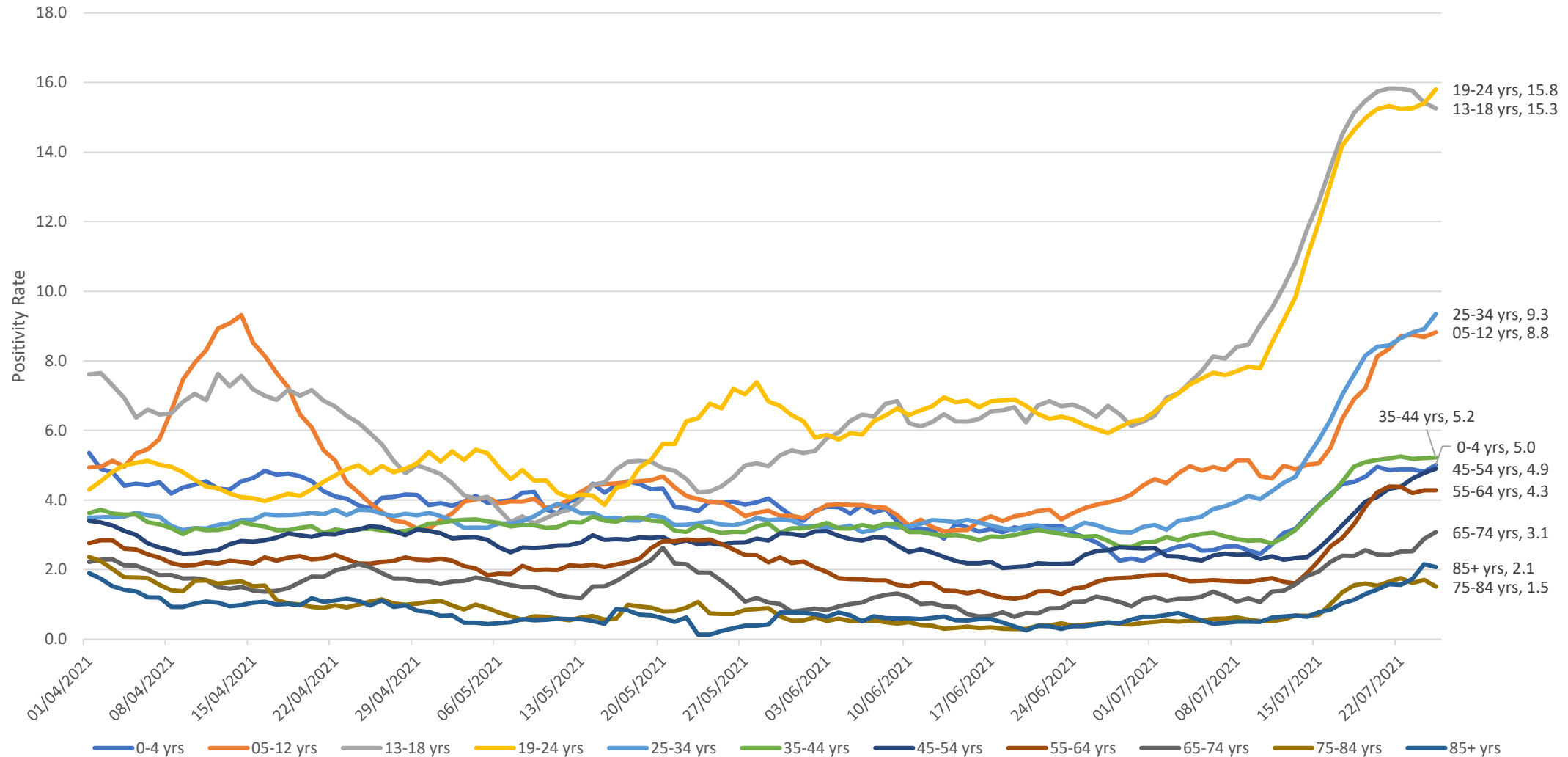


Updated 26/07/2021. Source: CRM data, HSE Contact and Tracing Team.

Acute=Swabs taken in acute hospitals; Community=Swabs taken in Community Test Centres for GP and CMP referrals (symptomatic, close contact etc), excluding serial and mass testing, from 15/07/2021 also walk-in testing and self-referral; Serial=Swabs taken under the Serial Testing Programme in Nursing Homes, Food Production, Mental Health and Disability; Other Mass=Swabs taken in response to an outbreak/case in facilities including workplaces, residential institutions, schools, nursing homes (ex. acute hospitals) and until 15/07/2021 walk-in test centres

# National 7-day Moving Average Positivity Rate by Age Group

Data from Acute Hospitals limited since 14/05/2021, gradual restoration from 06/07/2021  
(Data provided by HSE Contact Tracing Team and excludes & private testing)



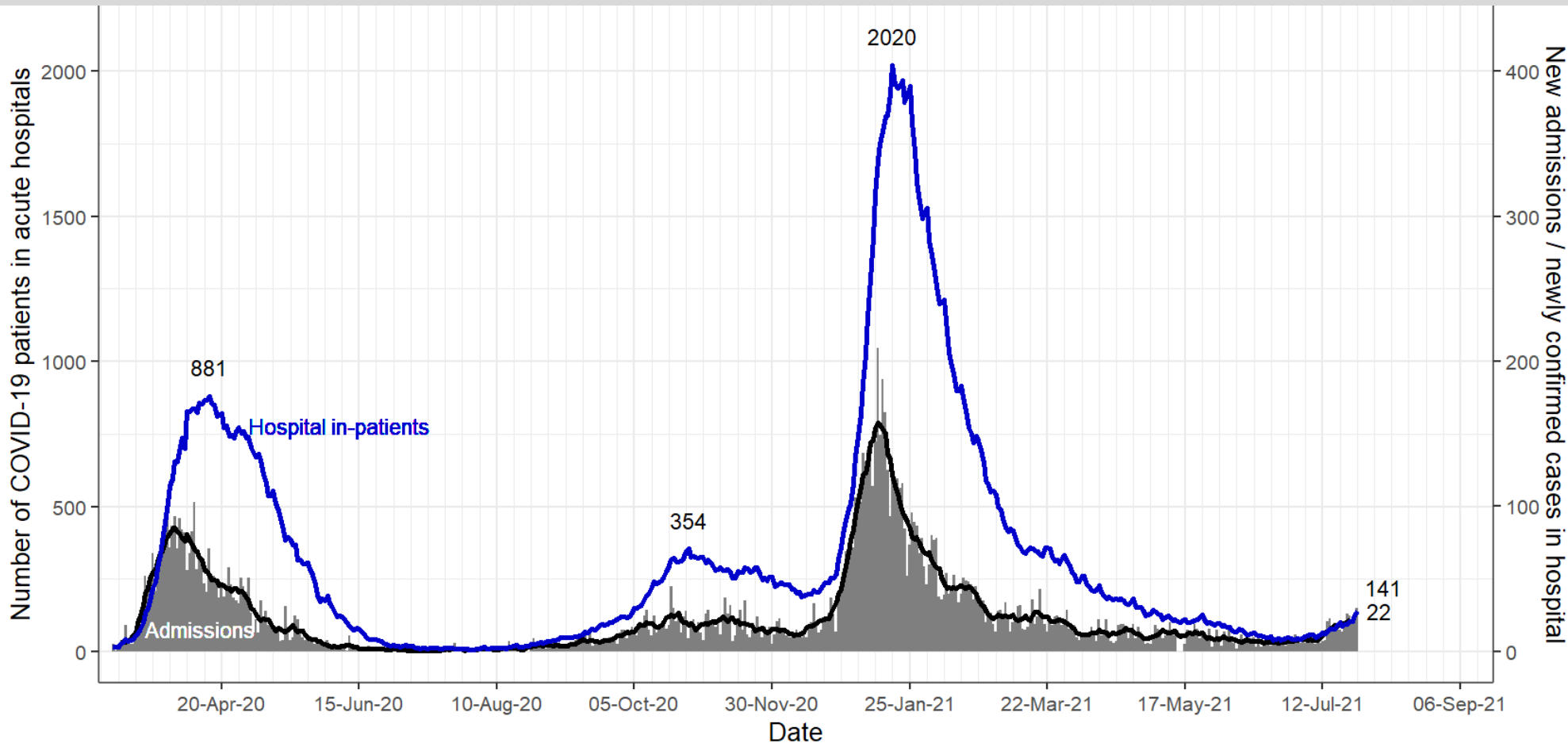


An Roinn Sláinte  
Department of Health

# Hospitals & ICU

# Confirmed cases in acute hospitals

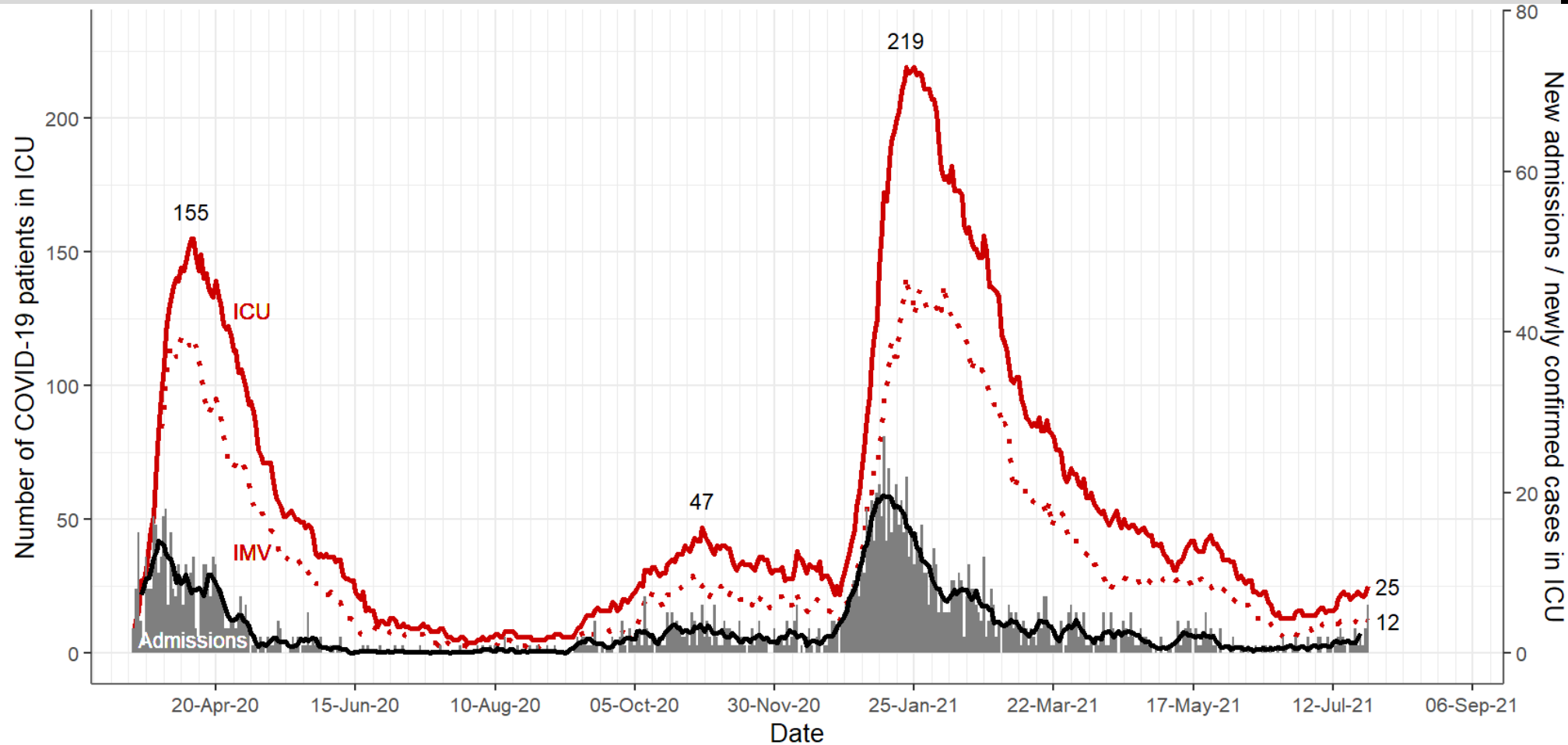
The number of people in hospital with confirmed SARS-CoV-2 infection. The number of people in hospital is **141**. The number of admissions and newly confirmed cases in hospital per day has increased to an average of **22 per day**.



HSE PMIU-SDU data to Mon 26 Jul 2021. Number of in-patients with COVID-19 (blue line) and number of newly admitted or newly confirmed cases per day (columns, with 7-day moving average, black line, secondary y-axis) on HSE acute hospital sites

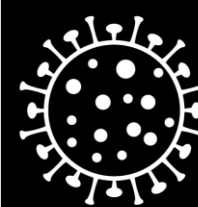
# Confirmed cases in intensive care

The number of people in ICU with confirmed SARS-CoV-2 infection and the number requiring mechanical ventilation remain low but have started to trend upward. 25 people in ICU, 12 mechanically ventilated, average 2.4 admissions per day.



NOCA ICU-BIS data to Mon 26 Jul 2021. Number of patients with COVID-19 in ICU (red solid line) and number requiring mechanical ventilation (IMV, red dotted line) and number of new admissions per day (columns, with 7-day moving average, black line, secondary y-axis).

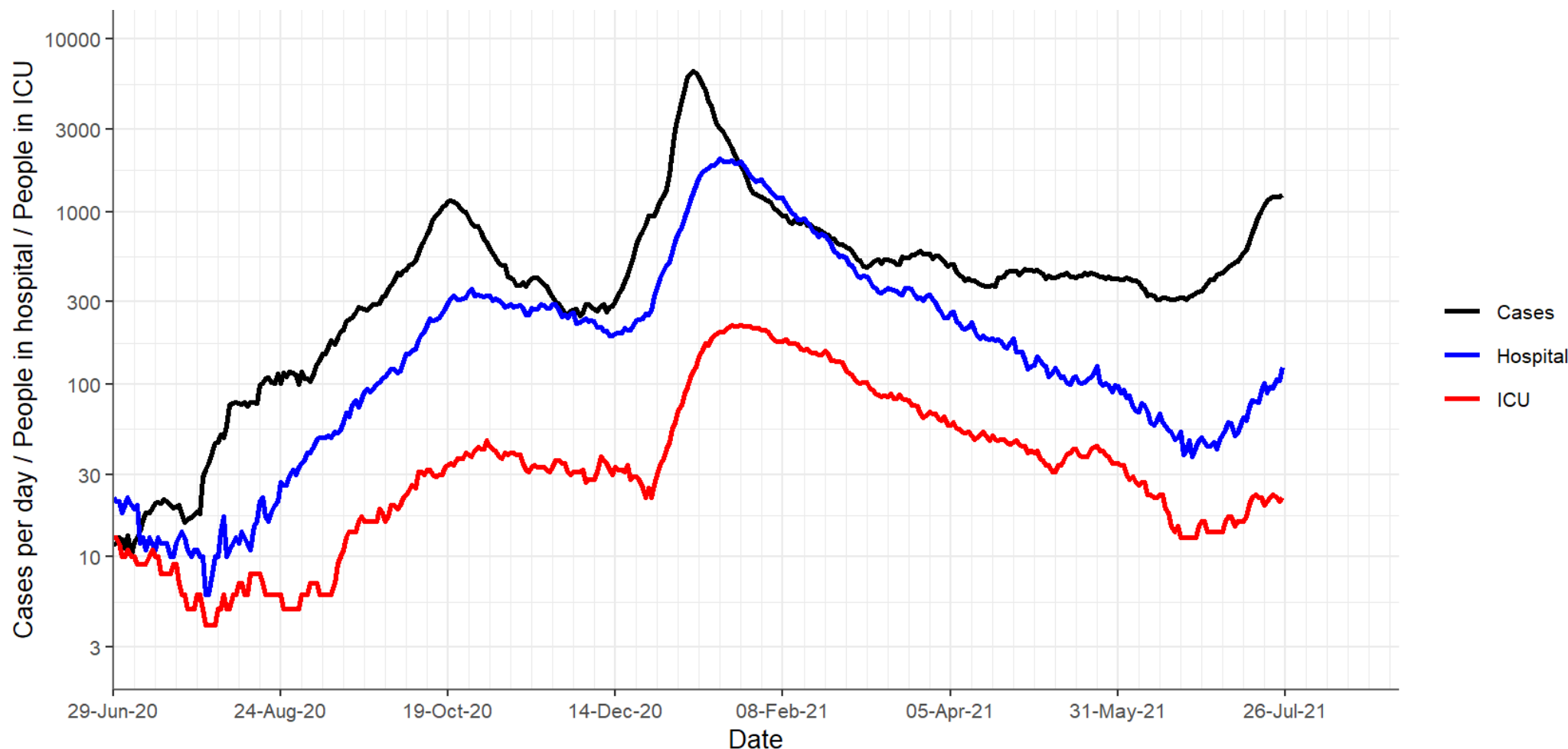
# Cases and hospitalisation



Coronavirus  
**COVID-19**  
Public Health  
Advice



When the number of new cases per day, and the number of people in hospital and ICU are compared on a log-linear plot, it is apparent that in earlier phases of the pandemic, when case numbers increased, the number of people in hospital and ICU, after a delay, started to grow at similar rates. The relationship has changed due to vaccination. It is clear that numbers in hospital are starting to grow, but the growth rate, and relationship between case counts and admissions, is not yet established.



Cases per day (7-day average) and number of people with confirmed SARS-CoV-2 infection in hospital and in ICU.  
CIDR data to Wed 12 May 2021, CCT data to Sun 25 Jul 2021, with HSE PMIU-SDU and NOCA ICU-BIS data

## Vaccination status of ICU cases



Of the 134 COVID-19 patients admitted to ICU between 25th March and 11th July 2021, vaccination status was known for 131. Of these, 26 were recorded as having received vaccination (one or two doses) prior to ICU admission.

Of the 26 who had been vaccinated:

- 20 had received one dose of vaccine and six had received two doses of vaccine.
- Of the six patients who received two doses of vaccine prior to ICU admission, one person had a date of COVID-19 diagnosis more than 14 days after receiving the second dose of vaccine.

Source: HPSC



# Outbreaks & Clusters



# Summary of COVID-19 outbreaks by key outbreak locations, week 29\* and weeks 20-29\*\* 2021



Key outbreak locations	Current week	Total
	Week 29	Week 20 -29, 2021
Schools^	0	243
Childcare facility	11	74
Workplace	35	289
Vulnerable groups^^	1	27
Direct Provision Centre	1	3
Nursing Home/Community Hospital	0	5
Acute hospitals	4	11
Hospitality sector	22	66
Social and Recreational	15	128

\* Week 29 2021 (July 18<sup>th</sup>-24<sup>th</sup>), \*\*Week 20-29 2021 (May 16<sup>th</sup> – July24<sup>th</sup>)

^These outbreaks are associated with school children +/- school staff. Transmission of COVID-19 within the school has not necessarily been established in these outbreaks

^^Includes Irish Travellers, Roma, homeless and addiction service population

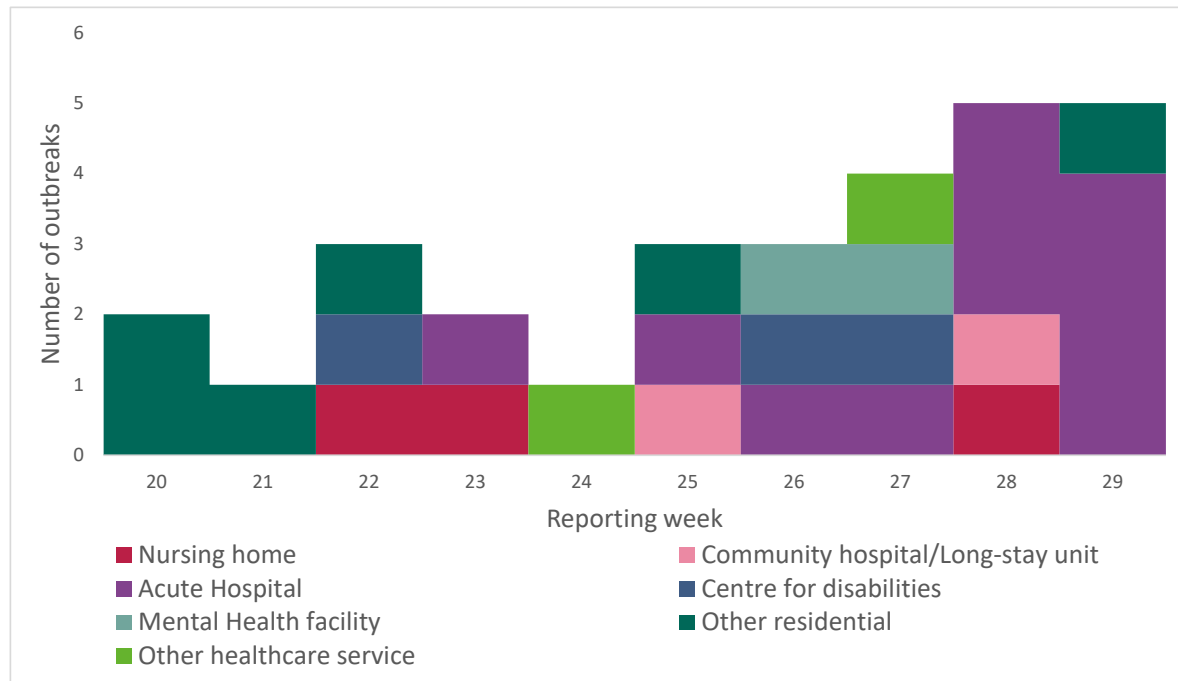
# Weekly Summary – week 29\*, 2021



- **Vulnerable groups**
  - 1 new outbreak in Irish Travellers with 12 linked cases
  - 1 new outbreak in Direct Provision Centre with 2 cases
- **Workplace outbreaks**
  - 4 new outbreaks in food industry with 12 linked cases (range: 3-3)
  - 5 new construction sector outbreaks with 11 linked cases (range: 0-3)
- **Residential institution outbreaks**
  - No new outbreaks reported this week in residential disability or mental health settings
- **Nursing Homes & Community Hospitals**
  - No new nursing home or Community Hospital outbreaks in week 29
- **Acute hospitals**
  - 4 new acute hospital outbreaks notified in week 29 with 10 linked cases
- **Schools**
  - No new outbreaks in week 29
- **Childcare facilities**
  - 11 new outbreaks in week 29 with 41 linked cases (range: 2-11)
- **Third-level students/University/college**
  - No new outbreaks associated with university/college locations or third level students in other locations
- **Hospitality**
  - 22 new outbreaks: 11 in hotels; 7 in restaurants/café's; 4 in pubs
- **Social and Recreational**
  - 15 new outbreaks: 6 in social gatherings; 9 in sports/other recreational setting/activity

\*week 29 July 18<sup>th</sup>-24<sup>th</sup> 2021

# COVID-19 outbreaks in healthcare/residential setting, weeks 20-29 2021



## Update on week 29

- Five new outbreaks in healthcare/residential settings in week 29
- No new outbreaks reported in week 29 in nursing homes/community hospitals
- There were 4 newly reported acute hospital outbreaks, involving 10 cases
- There was 1 newly reported outbreak in a residential setting other than a disability or mental health setting, involving 2 cases

## Overview

Since week 20 2021, there have been 29 outbreaks associated with healthcare settings

- 11 in acute hospitals
- 3 in Nursing Homes
- 2 in Community hospital/Long-stay units
- 3 in a disability settings
- 2 in mental health settings
- 2 in other health care services
- 6 in other residential settings (3 DPC, 2 homeless facilities and one not specified)

## Acute operations



Week ending	No. of hospital acquired COVID-19 cases
9 <sup>th</sup> May 2021	Data not available
16 <sup>th</sup> May 2021	0
23 <sup>rd</sup> May 2021	0
30 <sup>th</sup> May 2021	0
6 <sup>th</sup> June 2021	1
13 <sup>th</sup> June 2021	2
20 <sup>th</sup> June 2021	0
27 <sup>th</sup> June 2021	0
04 <sup>th</sup> July 2021	2
11 <sup>th</sup> July 2021*	0

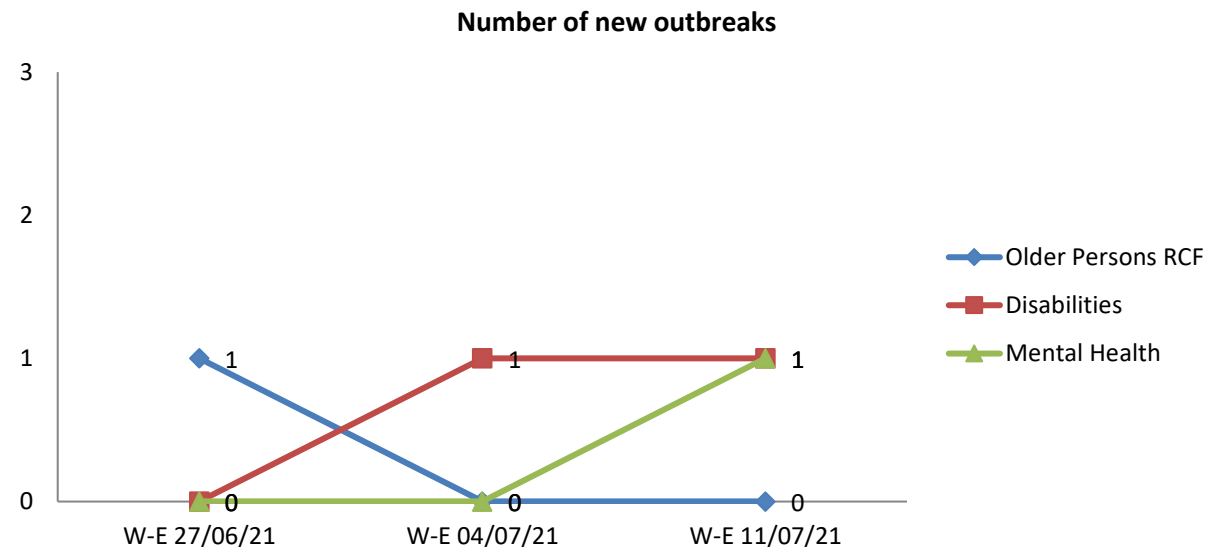
\* 74% of providers have returned data for week ending 11/07/2021

Source: AMRIC

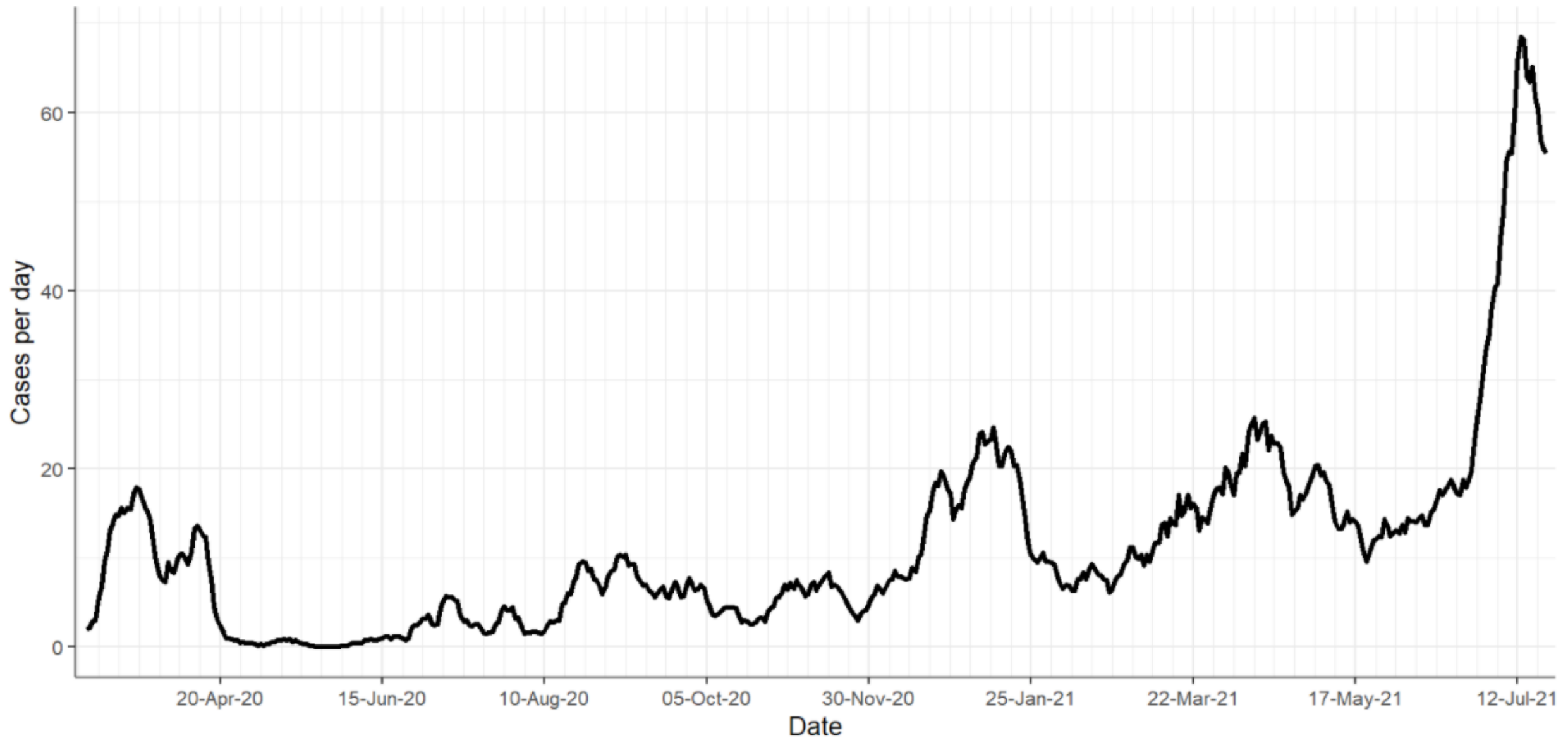
In w/e 11<sup>th</sup> July, there were:

- 14 new laboratory confirmed cases in hospital staff.
- 0 hospital acquired COVID-19 cases

## Community operations



## Cases per day - travel related



Daily cases where source of transmission is 'travel-related', 7-day moving average. CIDR data to midnight Wed 12 May 2021 and CCT data to midnight Sun 25 Jul 2021. Cases dated by event creation / case creation date.



# Test & Trace Update



## Test and Trace update

- From 19<sup>th</sup> – 25<sup>th</sup> July, there were approximately 132,176 lab tests reported in community, private and acute labs. This remains a partial view until both acute and private lab data flows are fully reinstated.
- From the 19<sup>th</sup> – 25<sup>th</sup> July there were c. 108,912 community referrals. Overall, total referrals have increased by 2% in comparison to the previous week. There were 26,371 walk in referrals (-2% on previous week), 6,998 international travel portal referrals (-12%) and 32,740 self-referrals (+15%).

In the community, over the last 7 days (19<sup>th</sup> – 25<sup>th</sup> July), the median end-to-end turnaround time from referral to:

SMS for **not detected and detected** tests was **1.1 days**

Communication of a **detected result by call** was **1.3 days**

Contact tracing completed, for **detected results** was **2.0 days**

## CMP update – 19<sup>th</sup> – 25<sup>th</sup> July



- The **total number of close contacts** reported to CMP was **24,995**, an *increase of 22%* from 20,462 the previous week. The average number of close contacts reported per day increased from 2,923 to 3,571.
- 42.2% (n=10,539) of the 24,995 close contacts self-reported to the CMP having received a first dose vaccine and 29.9% (n=7,463) self-reported having received a second dose vaccine.
- The mean number of close contacts per case (including cases with zero close contacts) was 2.8 which is the same as recorded last week.



# Variants update

## Total confirmed variants of concern cases:

- P.1 (Gamma): 30
- B.1.351 (Beta): 74
- B.1.617.2 (Delta): 1,833

## Total of other confirmed variants of note/of interest cases:

- B.1.617.1 (Kappa): 208
- B.1.525 (Eta): 74
- B.1.526 (Iota): 11
- P.2 (Zeta): 15
- B.1.429 (Epsilon): 7
- B.1.1.318: 233
- B.1.1.7 with E484K mutation: 2
- A.27: 2

*(Based on latest NVRL and Eurofins-Biomnis results as of 23<sup>rd</sup> July 2021)*

## S gene target positive prevalence

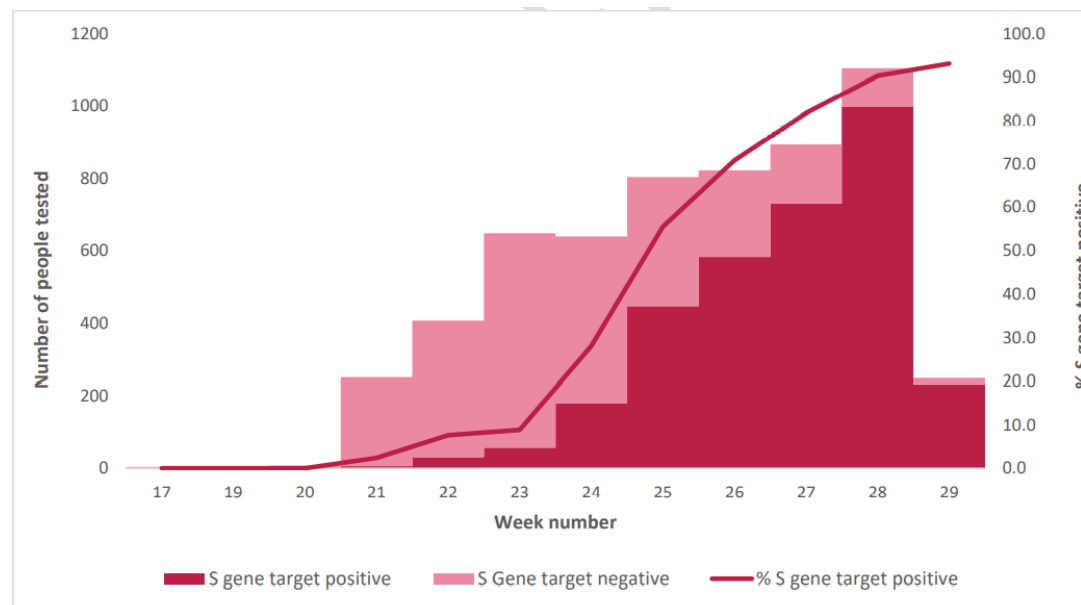


Epi Wk 26: 70.8%

Epi Wk 27: 81.7%

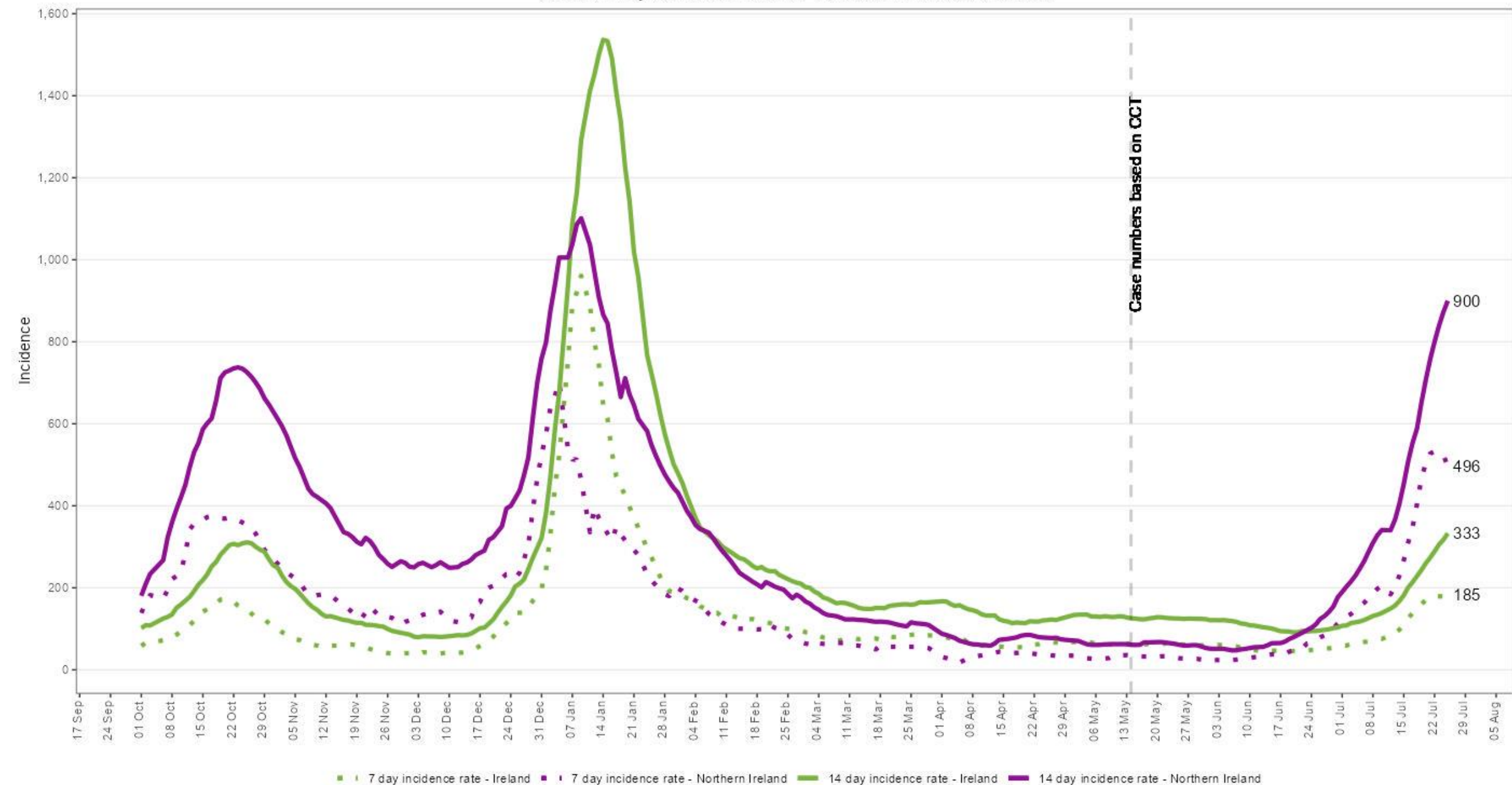
Epi Wk 28: 90.3%

Epi Wk 29: 93.1%\*



\*partial week 29 to 20<sup>th</sup> July

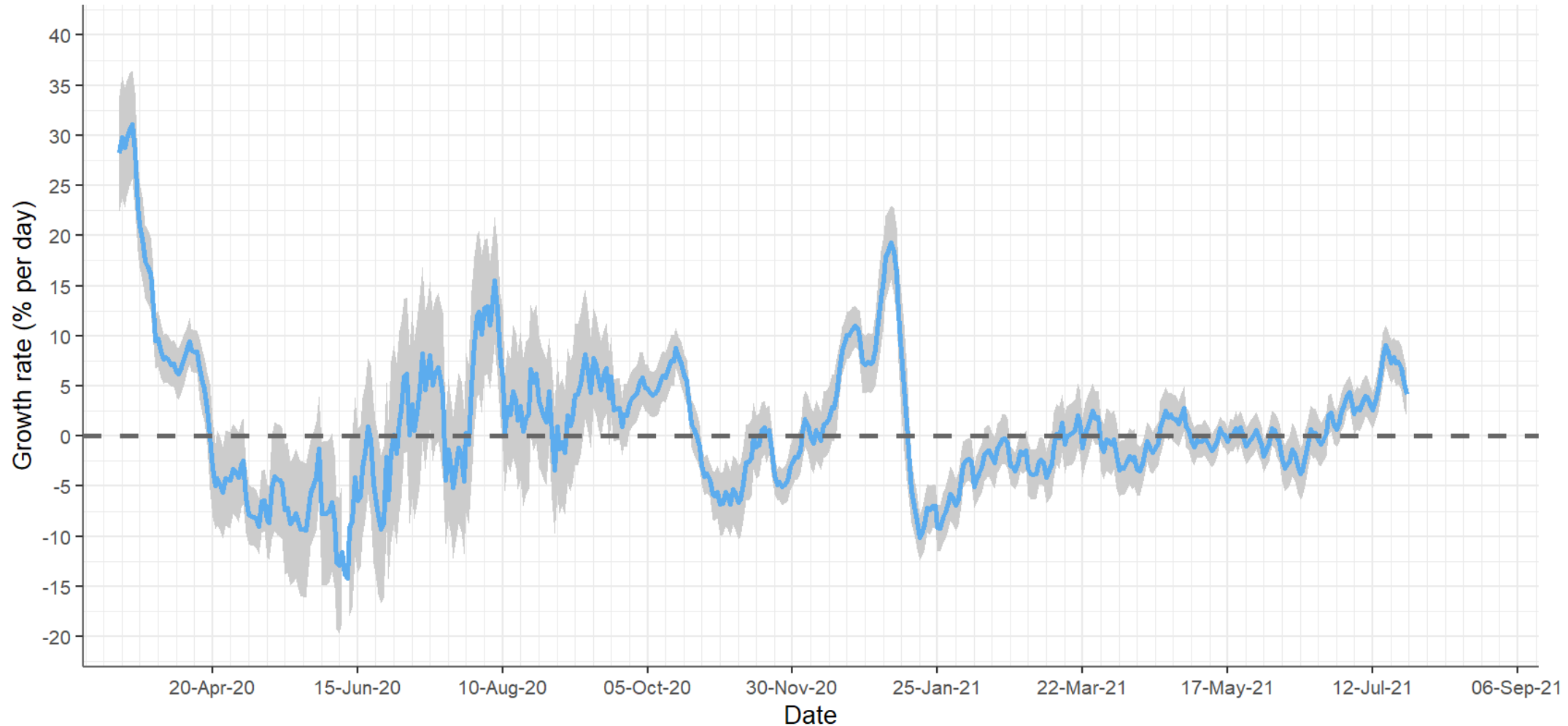
7 and 14 day Incidence rates for Ireland and Northern Ireland



Due to the cyber attack on the HSE's IT systems, daily case numbers from 14 May onwards are based on a data extract from the Covid Care Tracker.  
Source: health-ni.gov.uk daily data 25/07/21. Incidence calculated using the 2016 population estimates for both ROI and NI.

# Growth rate

The growth rate is difficult to estimate: a 14-day window gives an estimate of currently estimated at +4.2% (+1.8 — +6.5) per day, while estimates over a 21-day window are higher at +6% (+4.7 — +7.2) per day



CIDR data to midnight Wed 12 May 2021 and CCT data to midnight Sun 25 Jul 2021. Cases dated by event creation / case creation date. Growth rate in case counts using a 14-day window, cases dated by event (notification) date. Mean and 95% confidence intervals

- **Incidence high, with a very unstable pattern**
  - An unusual step change in case counts around 15 July, underlying dynamic and growth rate not yet clear
  - Cases (7-day average) **1256 cases per day**; 14-day incidence **333 per 100,000**
  - Growth rate uncertain at **+4-6% per day, reproduction number 1.2– 1.4**
  - **Doubling time 10-35 days**
  - Numbers in hospital increasing, numbers in ICU starting to increase
  - As of 24<sup>th</sup> July, 83% of adult population have received a first vaccine dose, and 68% have been fully vaccinated
- The trajectory over the next 10 weeks is very uncertain
  - in terms of case numbers and how they will translate into severe disease and hospitalisation
  - depends greatly on the level of social contact, and transmissibility of delta variant



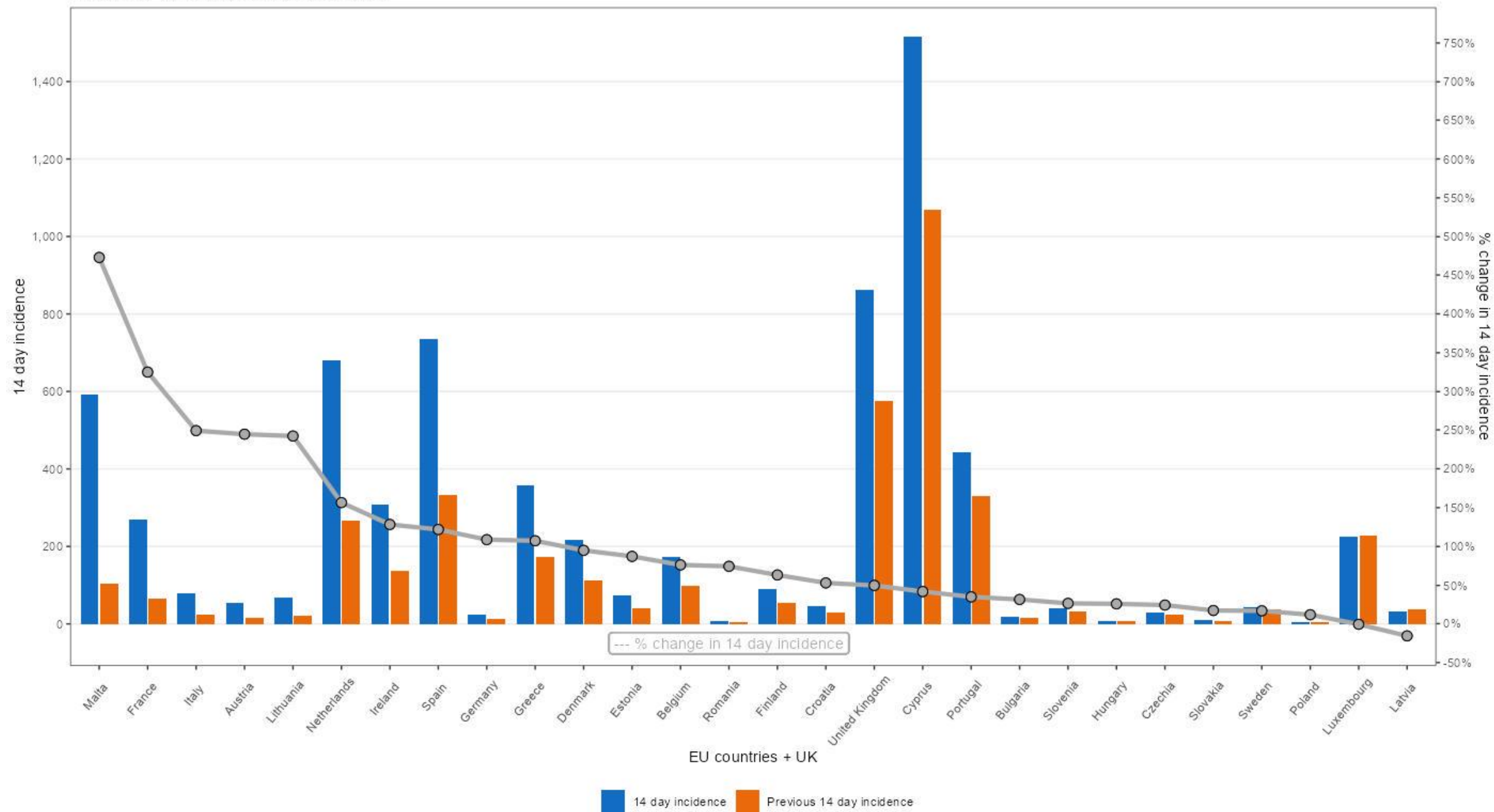
# European Data

## EU/UK ranked by 14 day incidence (25<sup>th</sup> July)

EU and the UK	14 day incidence	Previous 14 day incidence	% change in 14 day incidence
Cyprus	1514.2	1068.4	42%
United Kingdom	860.6	575.3	50%
Spain	734.1	330.9	122%
Netherlands	678.5	264.5	157%
Malta	590.4	103.1	473%
Portugal	442.2	327.8	35%
Greece	356.0	171.8	107%
<b>Ireland**</b>	<b>306.7</b>	<b>134.3</b>	<b>128%</b>
France	268.9	63.3	325%
Luxembourg	224.0	225.3	-1%
Denmark	214.7	110.2	95%
Belgium	170.5	96.9	76%
Finland	88.3	54.1	63%
Italy	76.3	21.8	249%
Estonia	73.2	39.1	87%
Lithuania	65.2	19.0	242%
Austria	51.7	15.0	245%
Croatia	43.7	28.6	53%
Sweden	42.2	36.1	17%
Slovenia	37.9	30.0	26%
Latvia	30.9	36.5	-16%
Czechia	28.6	23.0	24%
Germany	23.0	11.0	109%
Bulgaria	17.6	13.4	31%
Slovakia	7.9	6.7	17%
Hungary	6.9	5.5	26%
Romania	5.5	3.2	74%
Poland	3.5	3.1	12%

- As of 16<sup>th</sup> Dec, this daily data is now sourced from Our World In Data (OWID) instead of ECDC as they have switched to weekly reporting (Thursday evenings).
- OWID source their confirmed cases and deaths data from the COVID-19 Data Repository by the Center for Systems Science and Engineering (CSSE) at Johns Hopkins University (JHU). <https://github.com/owid/covid-19-data/tree/master/public/data>
- **\*\*Due to the cyber attack on the HSE's IT systems, daily case numbers from 14 May onwards are based on a data extract from the Covid Care Tracker.**

European 14 incidence rates (25 July)



## EU/UK ranked by 7 day percentage change (25<sup>th</sup> July)

EU and the UK	7 day incidence	Previous 7 day incidence	% change in 7 day incidence
France	187.2	81.7	129%
Lithuania	44.9	20.3	121%
Italy	49.6	26.8	85%
Estonia	46.0	27.2	69%
Romania	3.4	2.1	67%
Sweden	24.9	17.3	44%
<b>Ireland**</b>	<b>180.8</b>	<b>126.0</b>	<b>43%</b>
Bulgaria	10.4	7.2	43%
Slovenia	22.2	15.7	41%
Slovakia	4.5	3.3	36%
Finland	50.8	37.4	36%
Croatia	25.0	18.7	33%
Hungary	3.9	3.0	31%
Germany	12.9	10.2	27%
Latvia	17.1	13.8	24%
Poland	1.9	1.6	20%
Austria	28.2	23.6	19%
Spain	385.4	348.7	11%
Belgium	86.7	83.8	3%
Greece	178.5	177.5	1%
Portugal	219.4	222.7	-1%
Cyprus	734.5	779.7	-6%
Luxembourg	104.3	119.7	-13%
Malta	271.3	319.1	-15%
United Kingdom	395.0	465.7	-15%
Czechia	12.9	15.7	-18%
Denmark	94.6	120.1	-21%
Netherlands	266.4	412.2	-35%

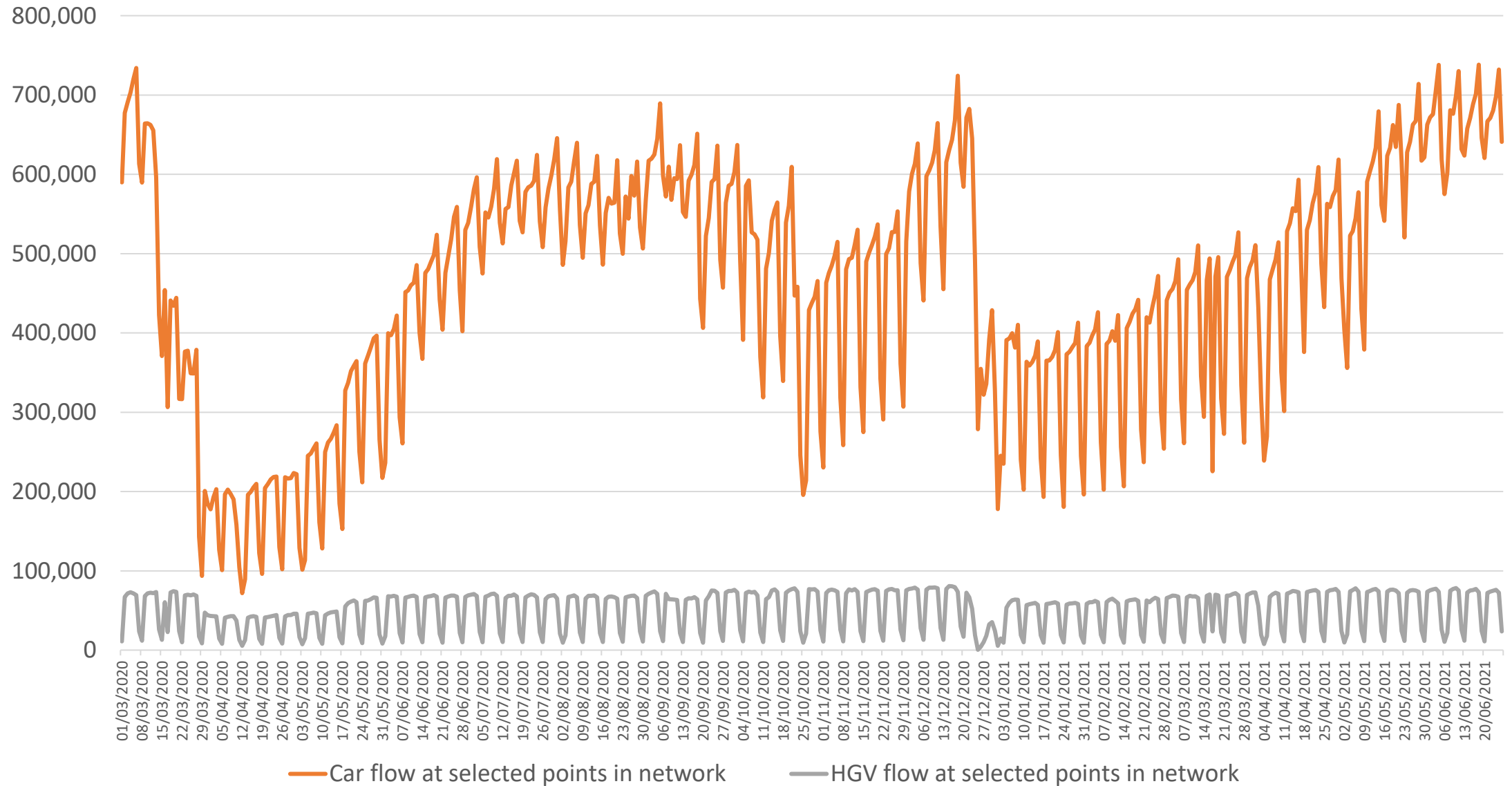
- As of 16<sup>th</sup> Dec, this daily data is now sourced from Our World In Data (OWID) instead of ECDC as they have switched to weekly reporting (Thursday evenings).
- OWID source their confirmed cases and deaths data from the COVID-19 Data Repository by the Center for Systems Science and Engineering (CSSE) at Johns Hopkins University (JHU). <https://github.com/owid/covid-19-data/tree/master/public/data>
- **\*\*Due to the cyber attack on the HSE's IT systems, daily case numbers from 14 May onwards are based on a data extract from the Covid Care Tracker.**



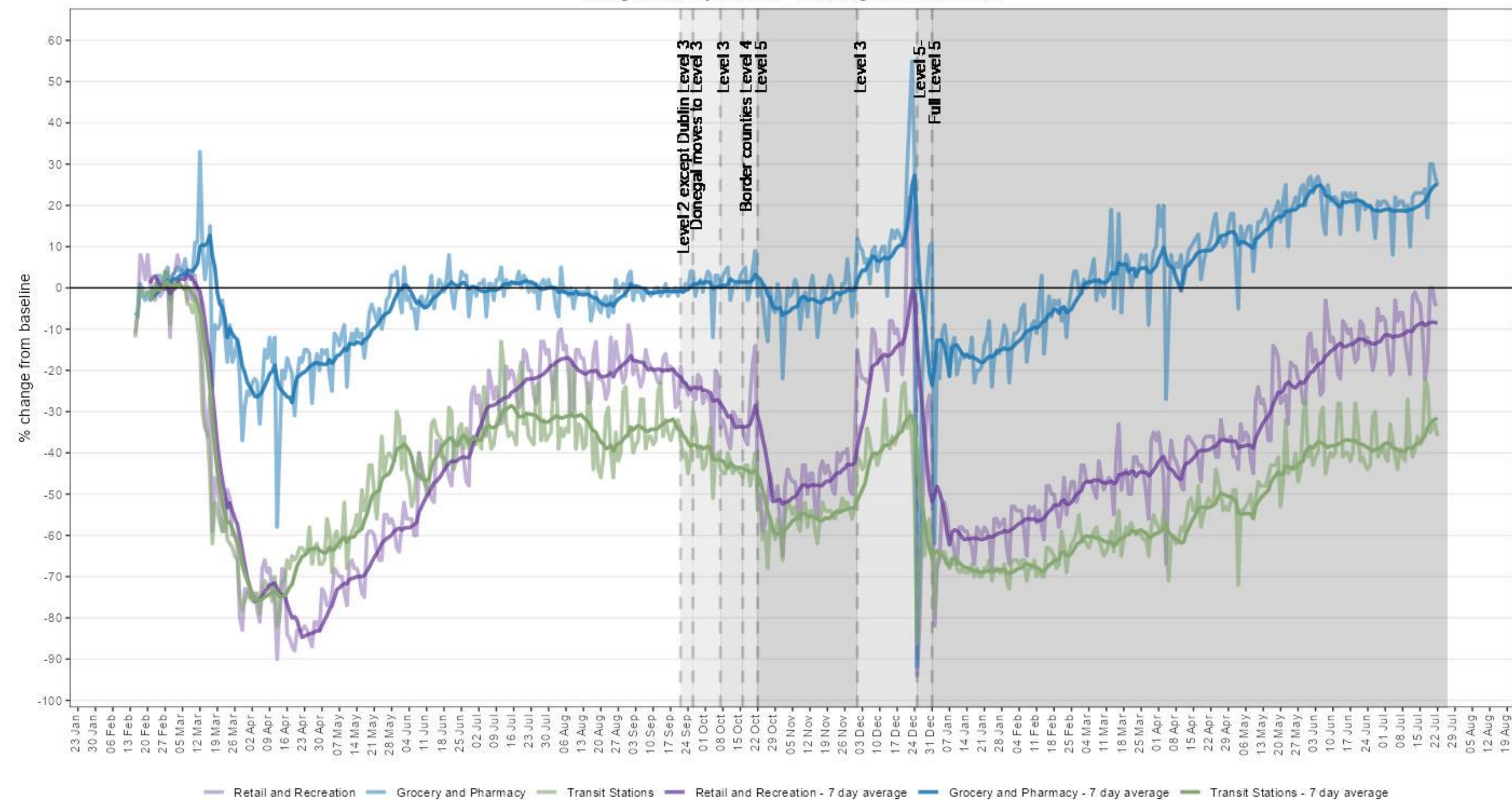


# Mobility Data

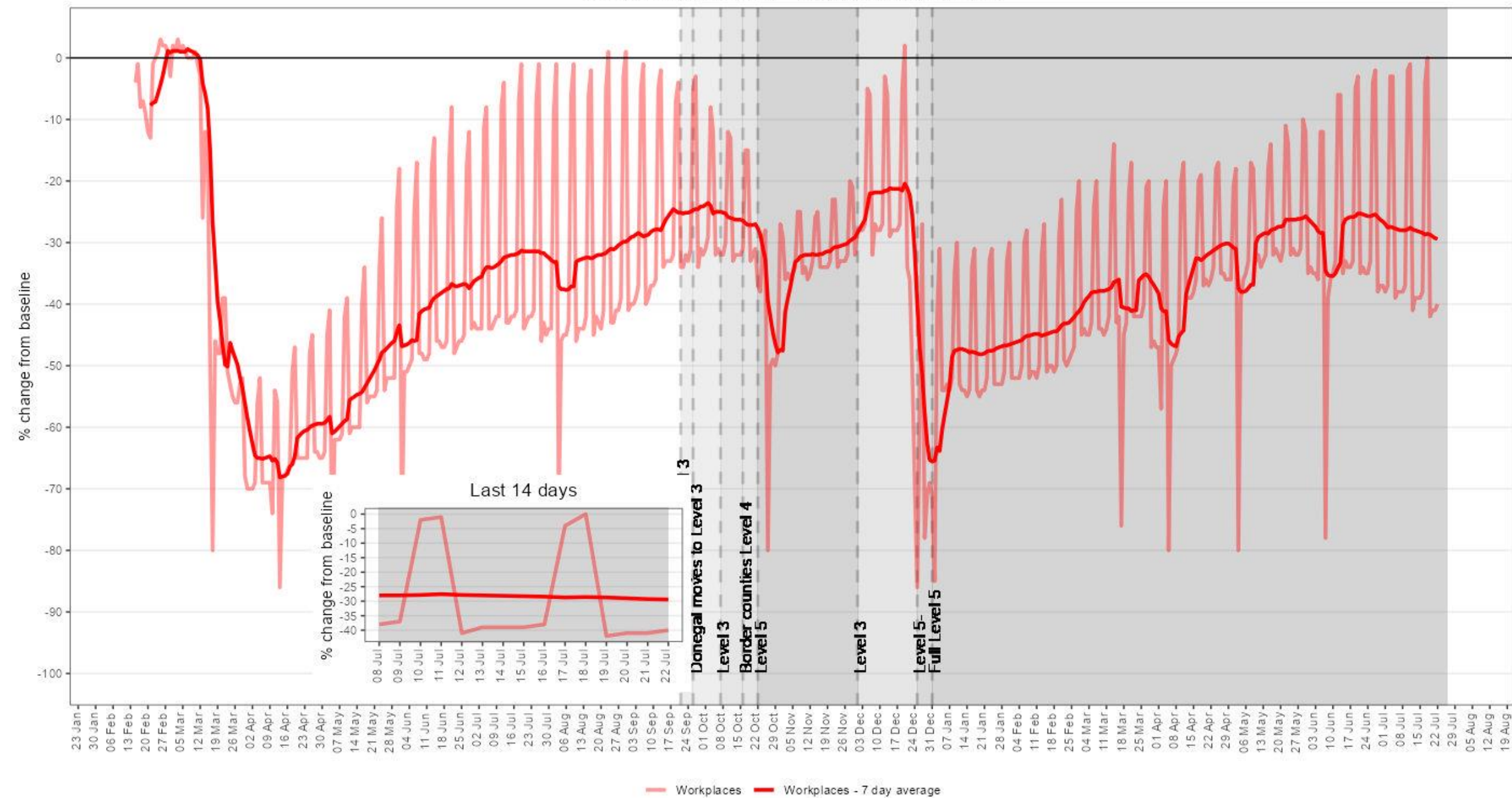
# Daily Traffic Flow



Google Mobility Ireland - % change from baseline



Google Mobility Ireland - % change from baseline





Apple Mobility Ireland - % change from baseline

