



An Roinn Talmhaíochta,
Bia agus Mara
Department of Agriculture,
Food and the Marine

Draft Interventions for the CAP Strategic Plan 2023 -2027

Ted Massey

EU Division

Department of Agriculture, Food and the Marine

August 10, 2021

CAP 2023-2027 - a new direction



Proposed interventions in CAP 2023-2027



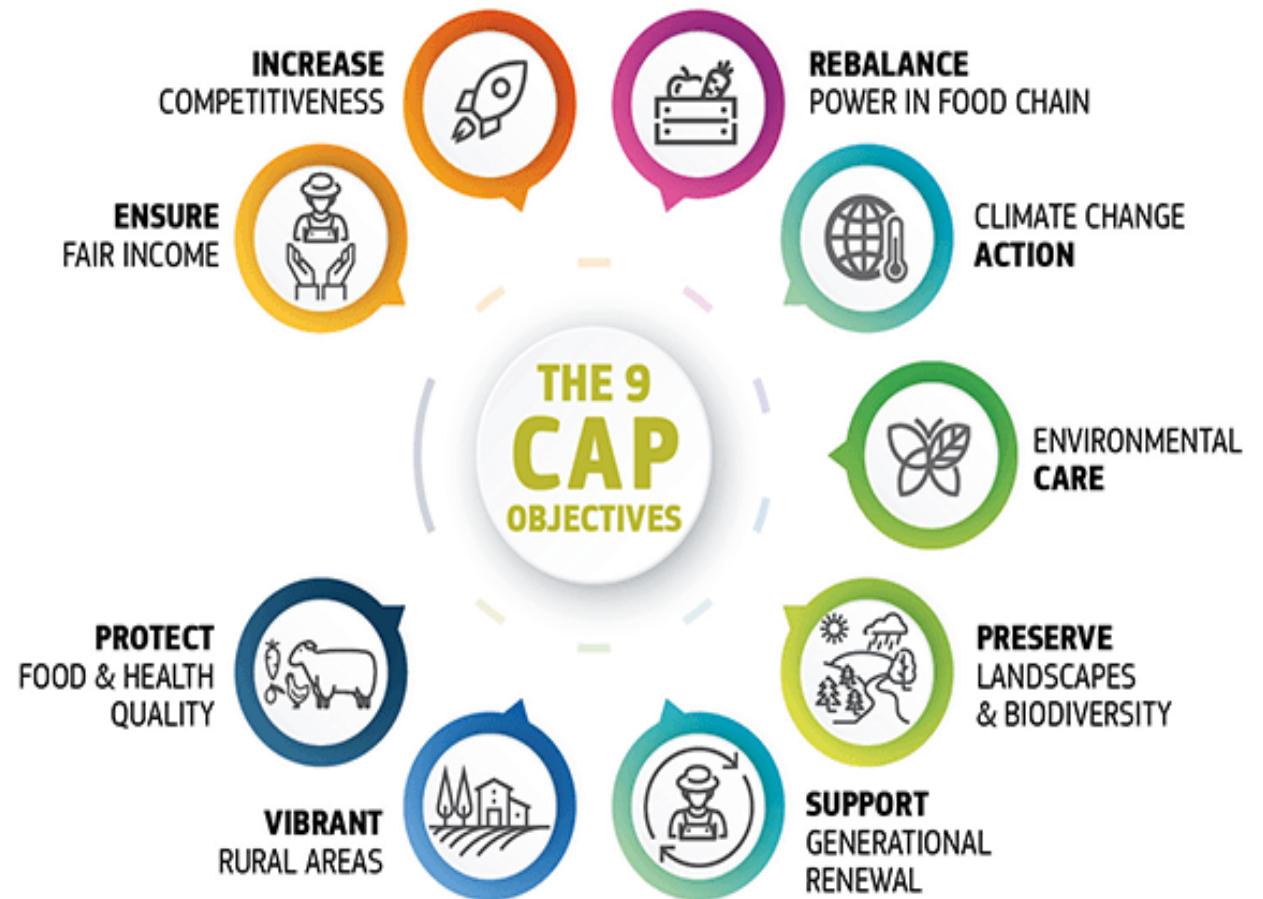
- Greater subsidiarity for member states
- One CAP Strategic Plan
- Address member states specific needs
- Performance-based approach



What can CAP do for you?



Nine objectives set out what the policy is intended to achieve for farmers, citizens, climate etc.

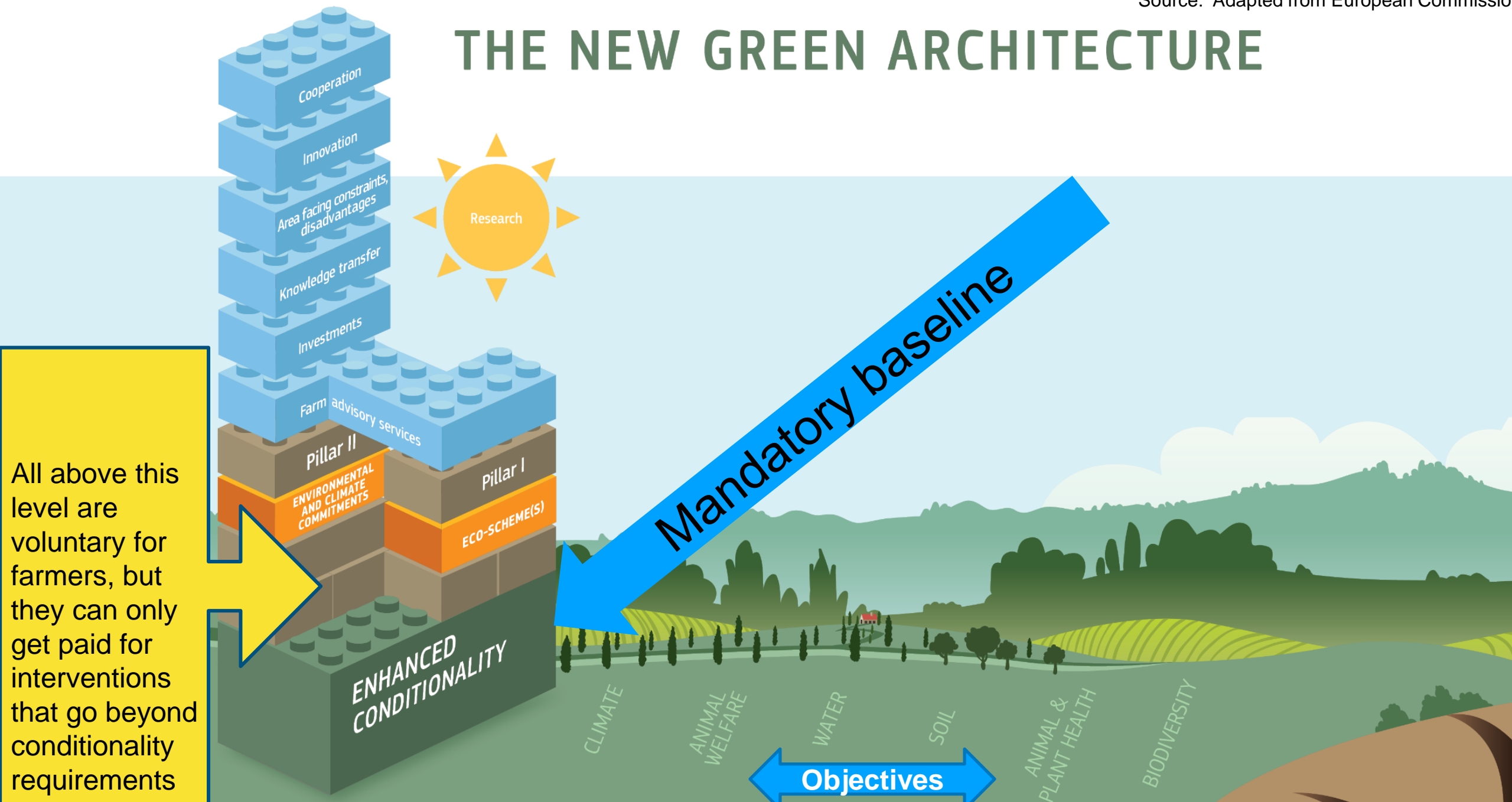


Direct payments for farmers



- Basic Payment Scheme (BPS) and Greening replaced by the Basic Income Support for Sustainability (BISS), Eco Scheme and the Complementary Redistributive Income Support for Sustainability (CRISS)
- Structure of every payment will change
- Value will also change for most – informed by modelling

THE NEW GREEN ARCHITECTURE



All above this level are voluntary for farmers, but they can only get paid for interventions that go beyond conditionality requirements

Cross-compliance becomes Conditionality

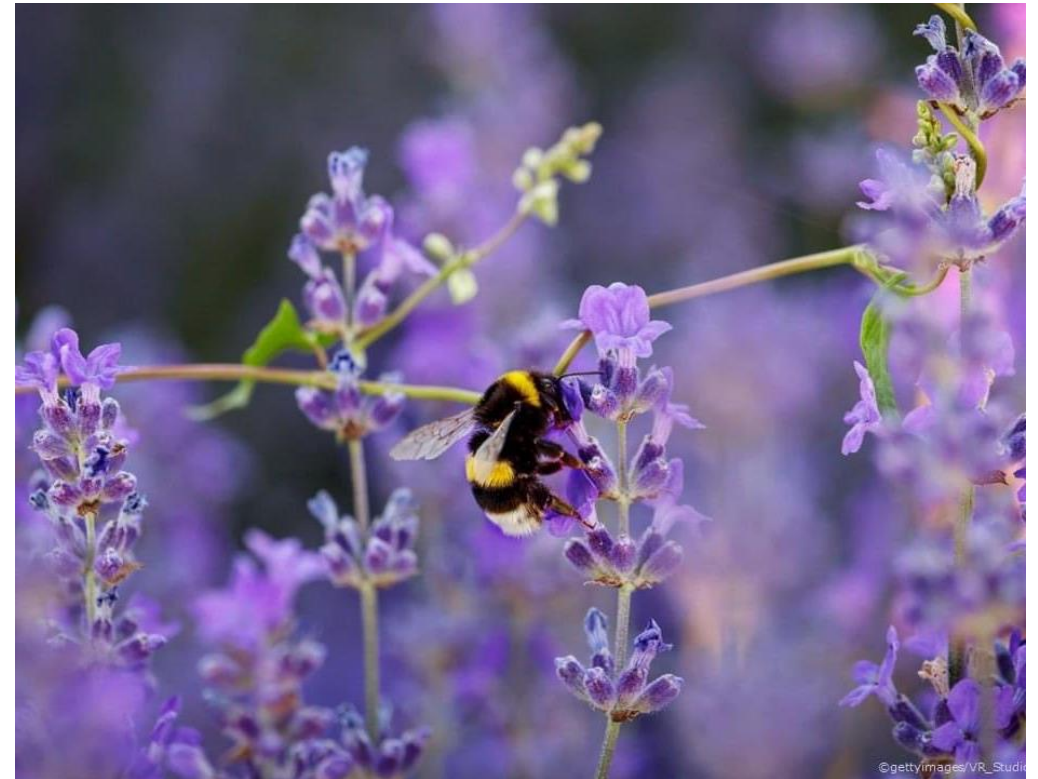


- Statutory Management Requirements (SMRs)
- Standards for maintenance of land in Good Agricultural and Environmental Condition (GAECs)
- Directive on sustainable use of pesticides (SMR 13)
- New GAECs – GAEC 2,
elements from “Greening” – GAEC 1, 8, 9 and 10
- On-going Nitrates Action Programme Review

Eco-Scheme



- Aim - annual agri-environmental scheme for all farmers
- Mandatory for each member state
– voluntary for farmers
- Minimum 25% of CAP Pillar 1 budget
- Rebate option?
- Appropriate measures?



Agri-Environment and Climate Measures (AECM)



- Aim - environmental, climate, biodiversity improvements – multi-annual scheme
- AECM general
- AECM co-operation project
- Right action in the right place
- Fixed rate and results-based payments



Suckler Carbon Efficiency Scheme



- Aim – improved environmental efficiency
- Builds on Beef Data Genomics Programme (BDGP) and Beef Environmental Efficiency Programme (BEEP)
- Different targets
- Member of Bord Bia Sustainable Beef and Lamb Assurance Scheme
- Limitation on expansion

Dairy Beef Welfare Scheme



- Aim – improved welfare and viability of male dairy calves
- Young calf measure
- Growing stage measure
- Member of relevant Bord Bia Sustainable Assurance Scheme



Sheep Improvement Scheme



- Aim – improved animal health and welfare in sheep sector
- Builds on current Sheep Welfare Scheme
- Purchase genotyped ram
- Member of Bord Bia Sustainable Beef and Lamb Assurance Scheme



Organic Farming Scheme



- Aim - increase area prioritising sectors in deficit
- Duration - 5 year scheme;
2 years in conversion - maintenance thereafter
- Minimum stocking density
- Higher rates horticulture, tillage and dairy

Generational renewal and gender balance



- National reserve to continue - priority for young and new farmers
- Minimum 3% of direct payment envelope to go to generational renewal measures
- Complementary Income Support for Young Farmers – payment per eligible hectare /a lump sum?
- Investment aid for young farmers
- Gender balance



Future of CAP



To present the best and most effective plan, we need your feedback





Have your say in public consultation

Send your written submissions by August 27

Email address:
CAPStrategicPlan@agriculture.gov.ie

Postal address:
CAP Rural Development Division,
Agriculture House,
Kildare Street,
D02 WK12

Learn more at gov.ie/CAP