



An Roinn Sláinte
Department of Health

NPHET COVID Update

28th June 2021

Current situation



	01-Oct	26-Oct (2 nd wave peak 14 day inc.)	01-Dec	01-Jan	14-Jan (3 rd wave peak 14 day inc.)	16-Jun	20-Jun	24-Jun	28-Jun
14-day incidence	96.08	306.20	86.90	320.63	1494.56	100.86	93.62	92.65	97.21
5-day average cases	407.0	919.4	261.0	1477.0	4459.4	309.0	332.0	298.2	359.2
Total weekly cases	2607	7000	1893	9419	35371	2237	2162	2188	2434

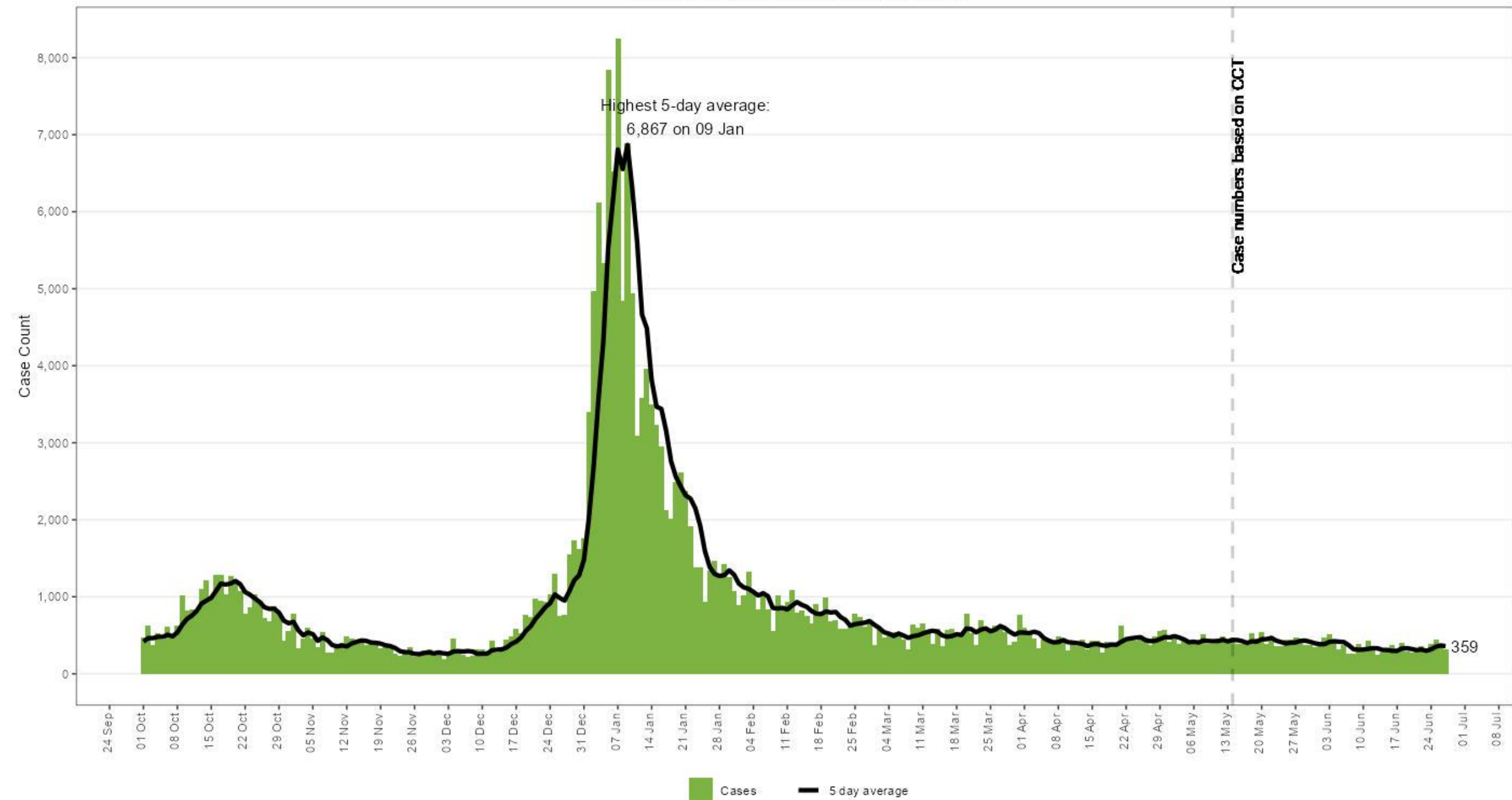
	01-Oct	26-Oct (2 nd wave peak 14 day inc.)	01-Dec	01-Jan	14-Jan (3 rd wave peak 14 day inc.)	16-Jun	20-Jun	24-Jun	28-Jun
No. Hospital (8.A.M)	122	344	224	508	1792	57	49	47	49
No. in ICU (11.30 A.M)	20	40	31	42	172	19	15	13	16

	JAN21	FEB21	MAR21	APR21	MAY21	JUN21	Total Deaths since MAR20
Reported on CIDR as at midnight 13/05/2021	1410	882	238	85	13	0	4941
Reported since cyber-attack	3	4	13	7	16	9	53*
Total	1413	886	251	92	29	9	4994



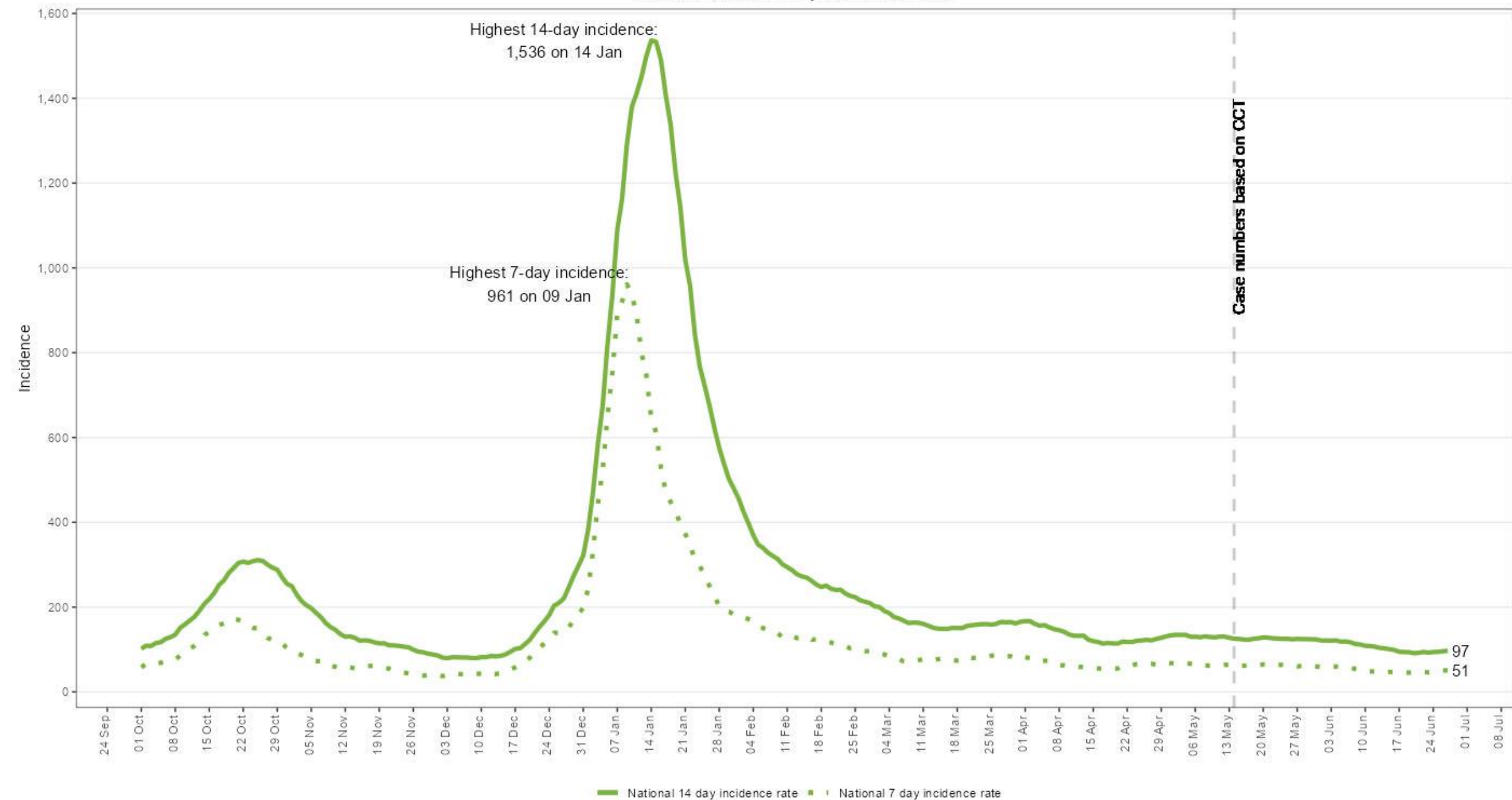
Cases & Incidence Rates

National Case Count and 5 Day Average



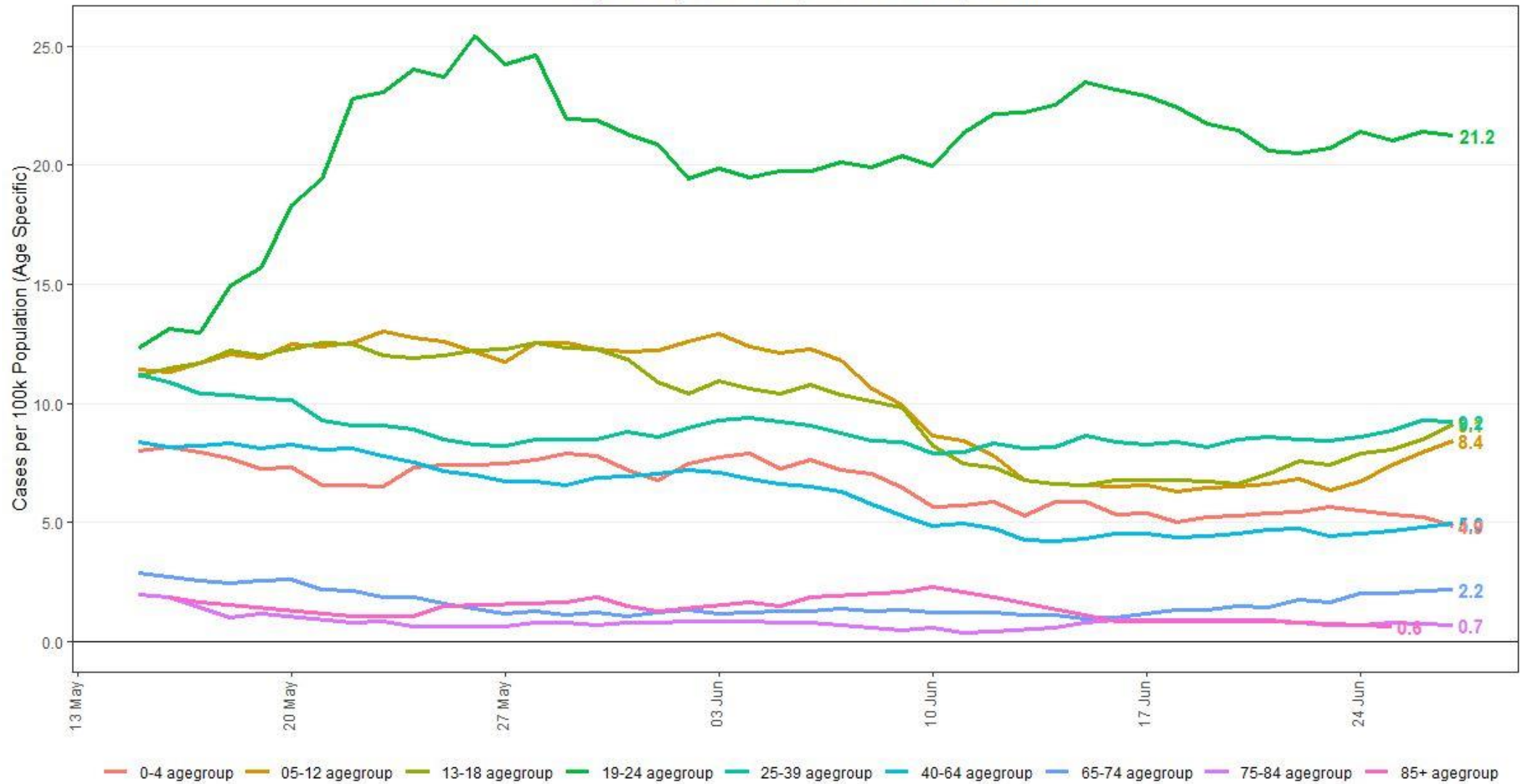
Due to the cyber attack on the HSE's IT systems, daily case numbers from 14 May onwards are based on a data extract from the Covid Care Tracker. Updated 28 June

National 7 and 14 day Incidence rates



Due to the cyber attack on the HSE's IT systems, daily case numbers from 14 May onwards are based on a data extract from the Covid Care Tracker. Updated 28 June

7-day Average of Cases per 100,000 Population

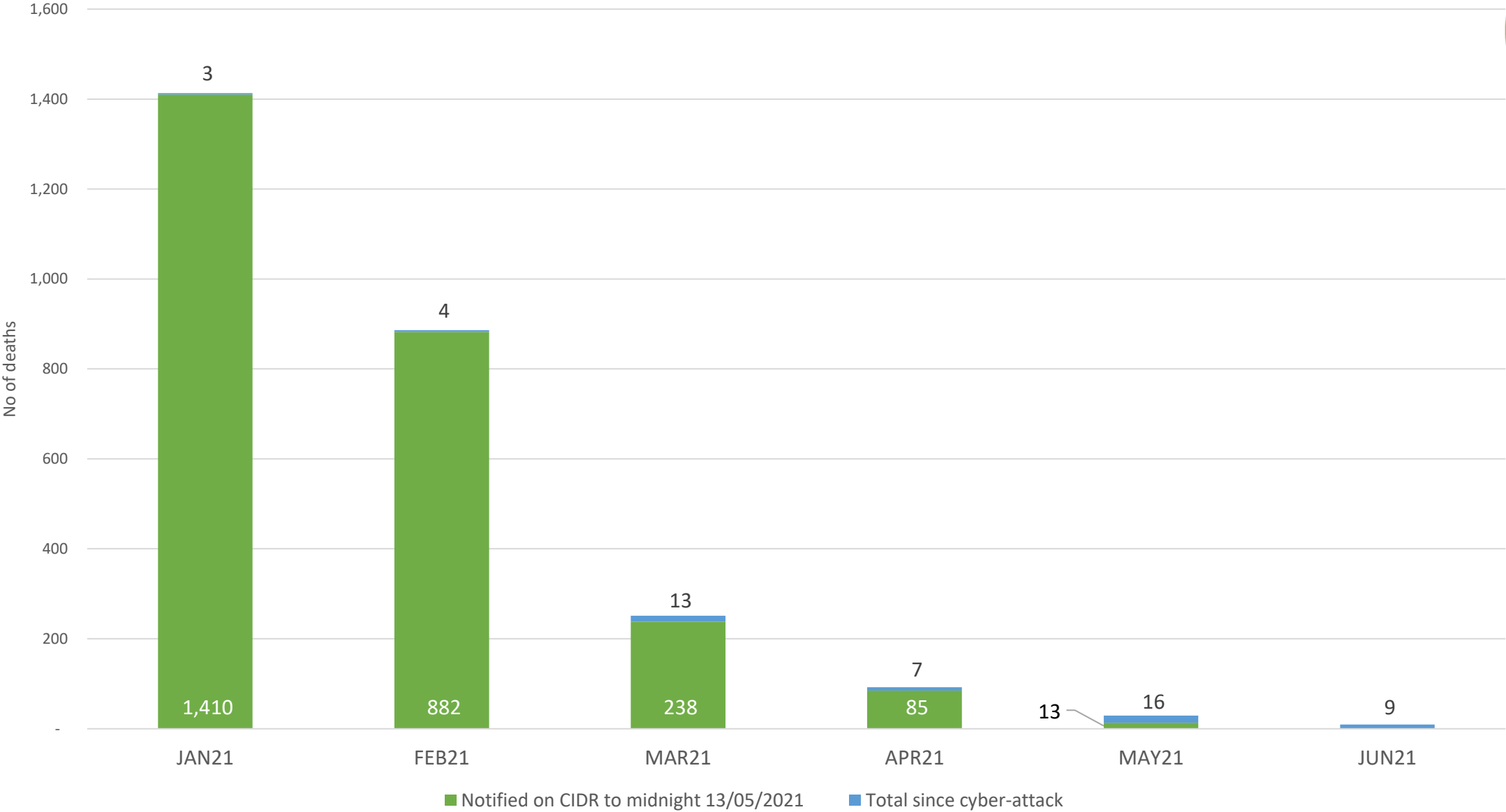


Updated 28 June. 2016 population estimates used.



Deaths

Total deaths by month 2021



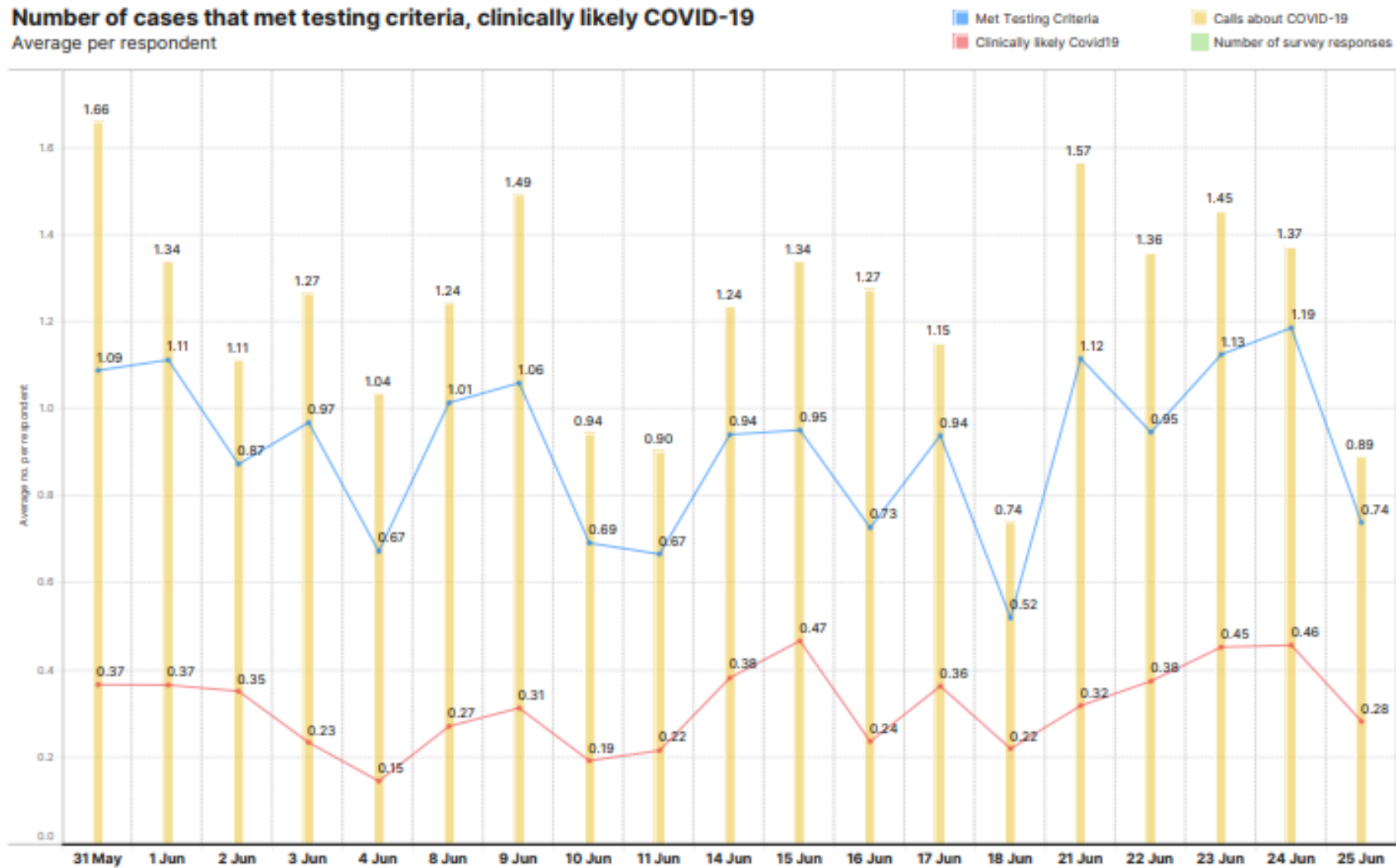


Testing

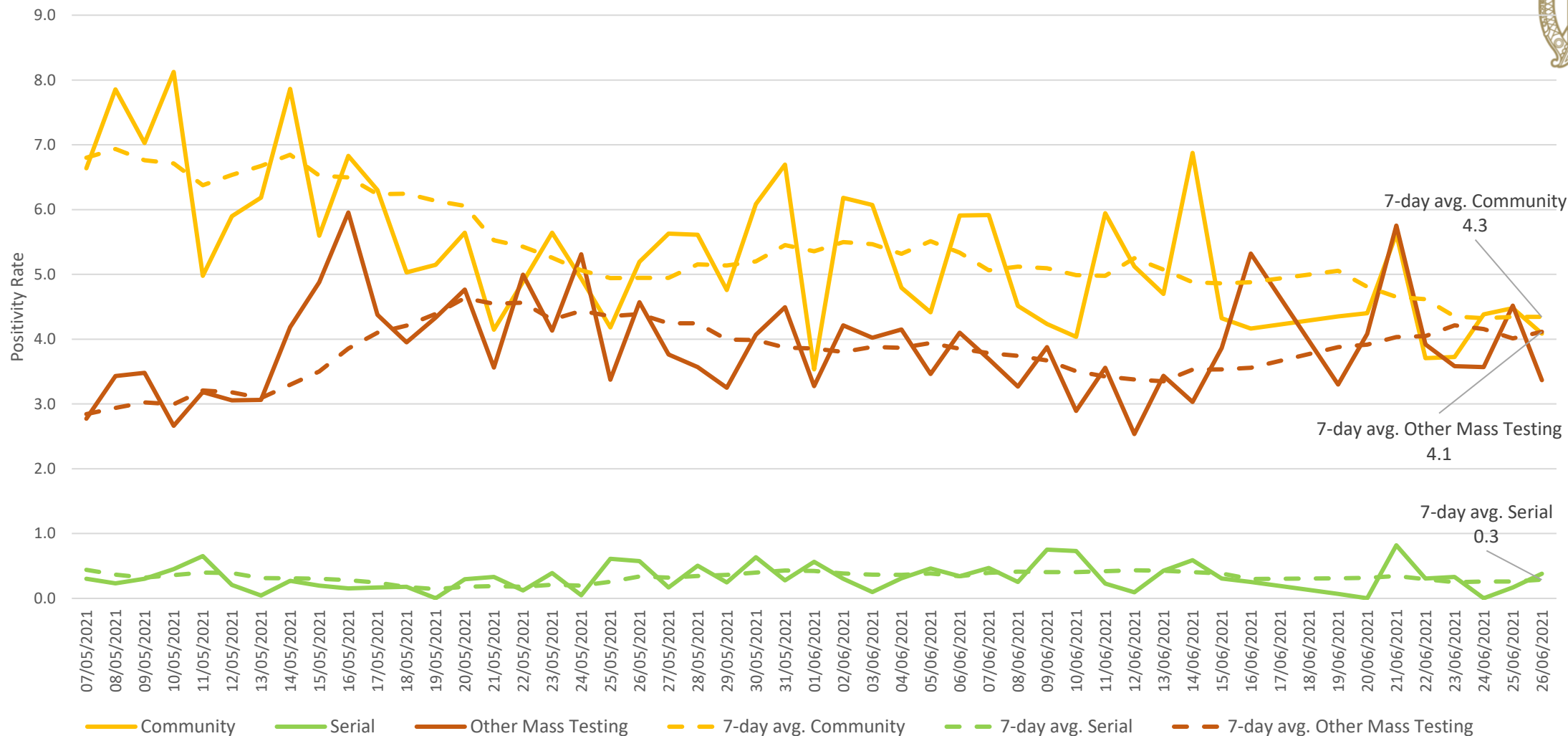


Number of cases that met testing criteria, clinically likely COVID-19

Average per respondent



Positivity Rate and 7-day Moving Average by Testing Pathway (data on acute hospital testing not currently available)



Updated 27/06/2021. Source: CRM data, HSE Contact and Tracing Team.

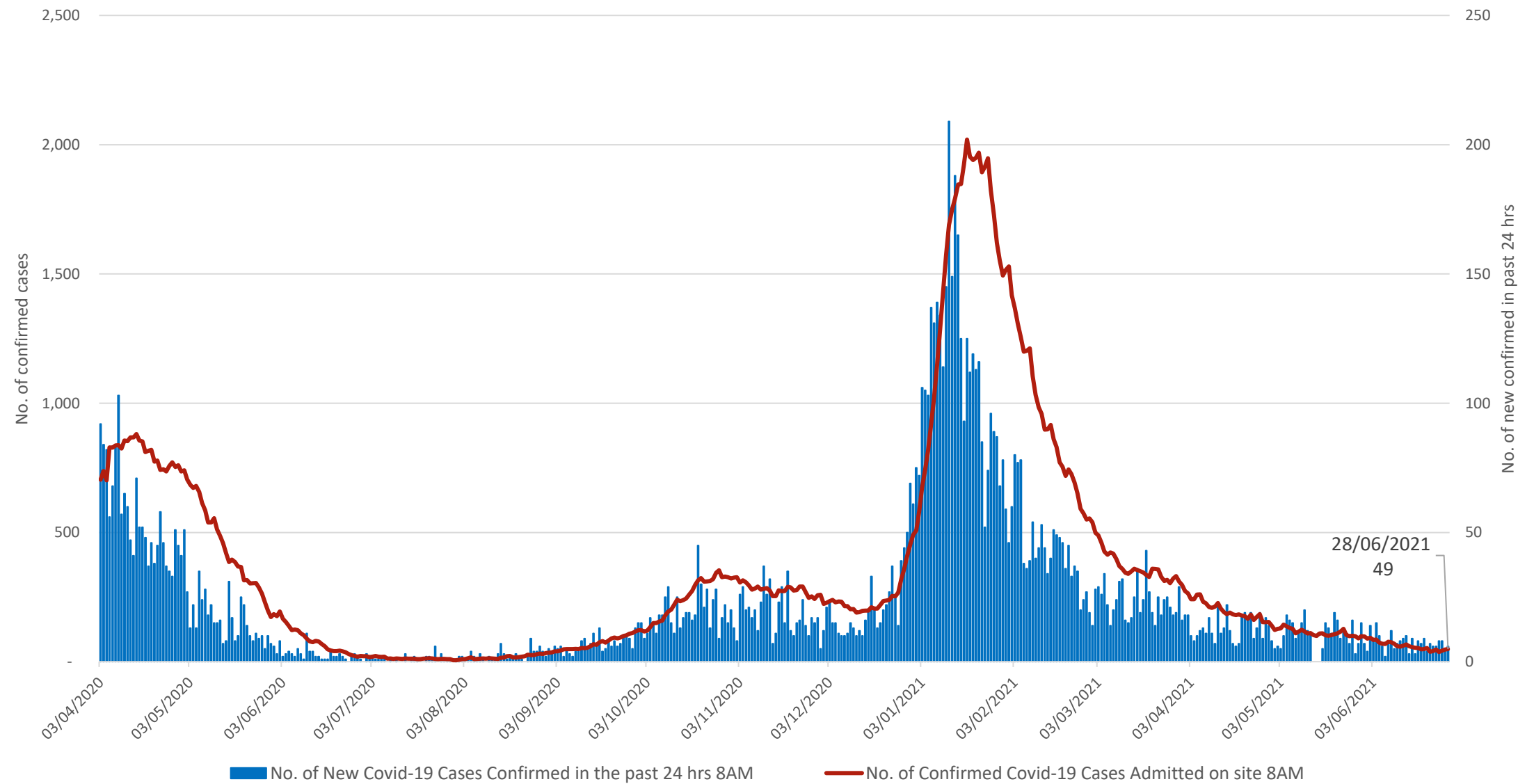
Acute=Swabs taken in acute hospitals; Community=Swabs taken in Community Test Centres for GP and CMP referrals (symptomatic, close contact etc), excluding serial and mass testing; Serial=Swabs taken under the Serial Testing Programme in Nursing Homes, Food Production, Mental Health and Disability; Other Mass=Swabs taken in response to an outbreak/case in facilities including workplaces, residential institutions, schools, nursing homes (ex. acute hospitals) and walk-in test centres



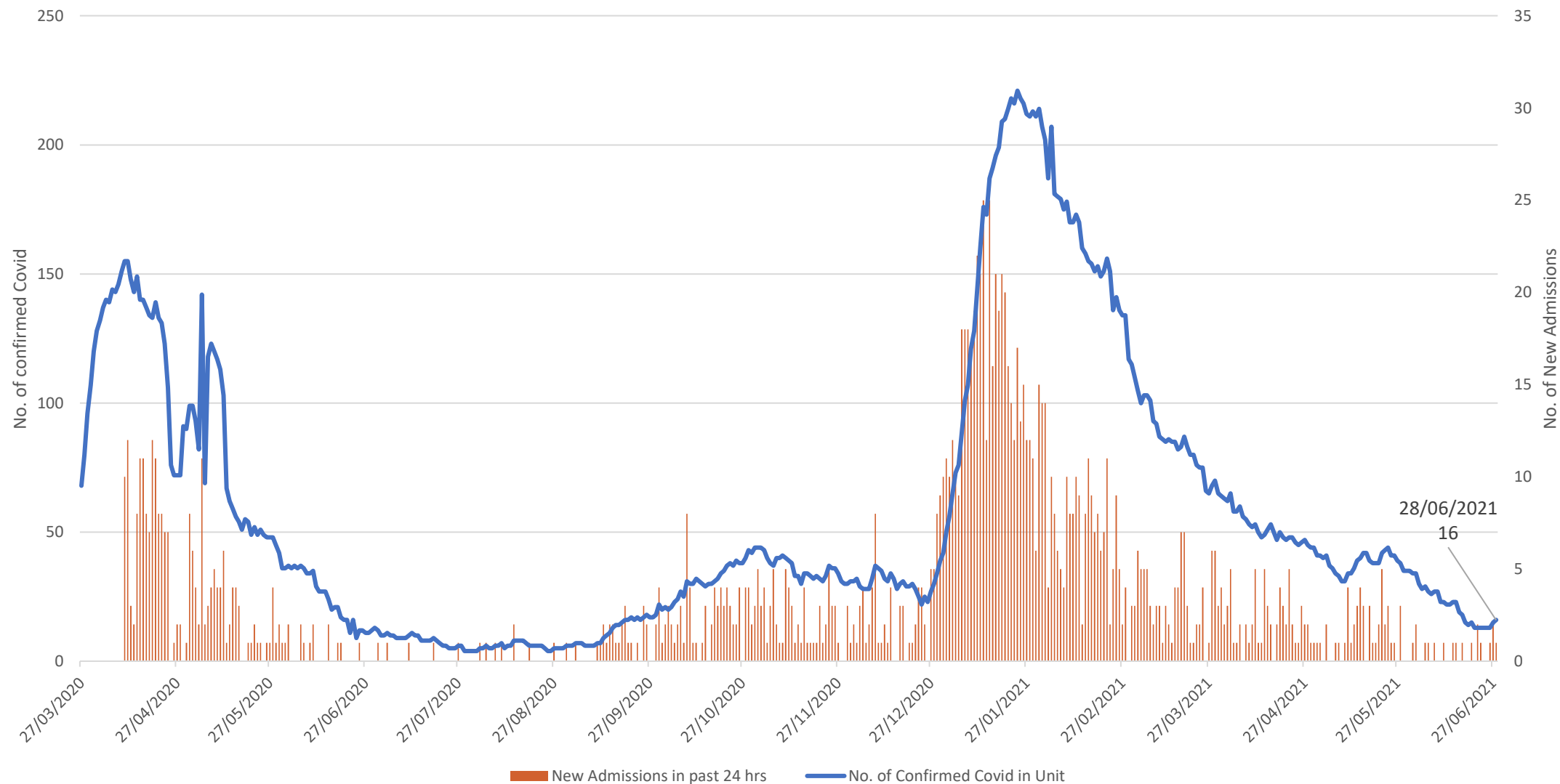
An Roinn Sláinte
Department of Health

Hospitals & ICU

Total No. of Confirmed Covid Cases in Hospital at 8AM &
No. of New Confirmed Covid Cases in Past 24 hrs



Total No. of Confirmed Covid Cases in ICU at 11.30AM &
 No. of New Confirmed Covid Admissions to ICU in past 24 hrs
(includes all reporting public & private hospitals and may differ from no. reported by HSE in public hospital ICU)





Outbreaks & Clusters

Key Points (Week 24 2021) (week ending June 19th)



Aggregate data on 93 outbreaks were reported to HPSC by regional Departments of Public Health for week 24 2021

- No new nursing home/community hospital/long-stay unit/residential institution/acute hospital outbreaks reported
- 2 among the Irish traveller community
- 15 outbreaks, involving 60 linked cases, associated with post-primary schools
- 14 outbreaks, involving 58 linked cases, associated with primary schools
- 1 outbreak, involving 2 linked cases, associated with a special education facility
- Two outbreaks were reported in childcare facilities with seven confirmed linked cases
- One outbreak among third-level students
- 14 workplace outbreaks were reported; including two in the food production and processing sector, one in a meat/poultry processing facility, three in the construction sector and eight in other workplaces
- 15 outbreaks associated with social gathering were reported with 63 confirmed linked cases

Source:
HPSC

Key Points (Week 25 2021) (to Friday 25th June)



- Data on 46 outbreaks were reported to HPSC by regional Departments of Public Health for week 25 2021 to Friday 25/06/2021
- There was one new nursing home outbreak reported with two linked cases
- No new community hospital/long-stay unit outbreaks were reported
- There was one new acute hospital outbreak reported with two linked cases
- No new residential institution outbreak was reported
- 14 outbreaks, involving 88 linked cases, were associated with primary schools
- Four outbreaks were reported in childcare facilities with 25 confirmed linked cases
- Eight workplace outbreaks were reported; including one in the food production and processing sector, and seven in other workplaces
- Four outbreaks associated with social gatherings were reported with 13 confirmed linked cases
- There were four pub outbreaks with 61 confirmed linked cases
- There were three restaurant/café outbreaks with eight confirmed linked cases
 - The remaining five outbreaks were across numerous other locations: retail outlet (n=2), transport (n=1), religious/other ceremony (n=1), and community outbreaks (n=1)
- Two outbreaks involving Irish Travellers were reported with four confirmed linked cases

Source:
HPSC



Test & Trace Update

Test and Trace update



- From 21st June-27th June, the **total number of close contacts was 9,535**, compared with 9,195 the previous week, meaning the daily average has increased by 4% from 1,314 to 1,362 per day.
- From 21st - 27th of June, of those tested with close contacts, the average number of close contacts per case was 3.8.
- From the 20th – 26th of June there were c.71,050 community referrals, this figure includes 18,894 walk-in referrals, 4,785 international travel referrals and 12,936 referrals from the self-referral portal. The remainder of referrals are from GP and close contacts.
- From the 13th – 19th of June to the 20th – 26th June, there is a week on week difference of:
 - Walk-in referrals have increased by 40%
 - International travel referrals have increased by 23%
 - Referrals from the self-referral portal have increased by 38%

Overall, this weekly community total has increased by c.26% since the same time-period last week (13th – 19th June; c.56,387 total referrals).

Variants update



Total confirmed variants of concern cases:

- P.1 (Gamma): 29
- B.1.351 (Beta): 72
- B.1.617.2 (Delta): 220

Total of other confirmed variants of note/of interest cases:

- B.1.617.1 (Kappa): 158
- B.1.525 (Eta): 73
- B.1.526 (Iota): 11
- P.2 (Zeta): 15
- B.1.429 (Epsilon): 7
- B.1.1.7 with E484K mutation: 2
- B.1.1.318: 222
- A.27: 2

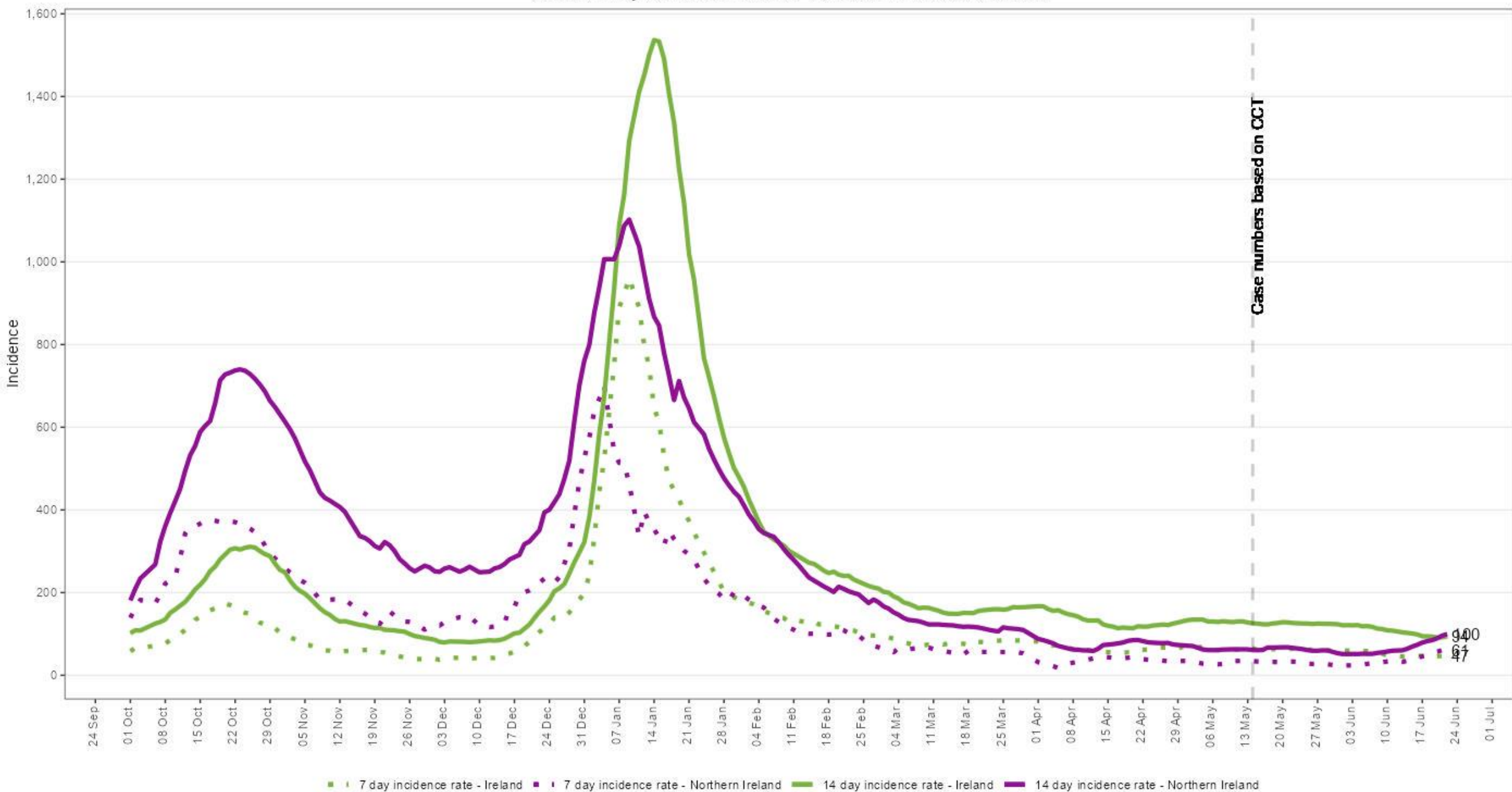
*(Based on latest NVRL and Eurofins-Biomnis
results as of 28th June 2021)*

S gene target positive prevalence

Epi Wk 24: 28%

Epi Wk 25: 55.5%

7 and 14 day Incidence rates for Ireland and Northern Ireland



Due to the cyber attack on the HSE's IT systems, daily case numbers from 14 May onwards are based on a data extract from the Covid Care Tracker. Source: health-ni.gov.uk daily data 22/06/21. Incidence calculated using the 2016 population estimates for both ROI and NI.

Situation analysis 28 June 2021



- Incidence stable or increasing
- Highest incidence in young adults aged 19-24 years
- Test positivity stable
- Numbers in hospital and ICU stable overall
- There is very significant concern regarding the potential impact of the Delta variant over the coming weeks and months.
- Outdoors is lower risk, but we still need to take the basic precautions
- We need to keep close contacts low, and minimize the risk of transmission during any close contact



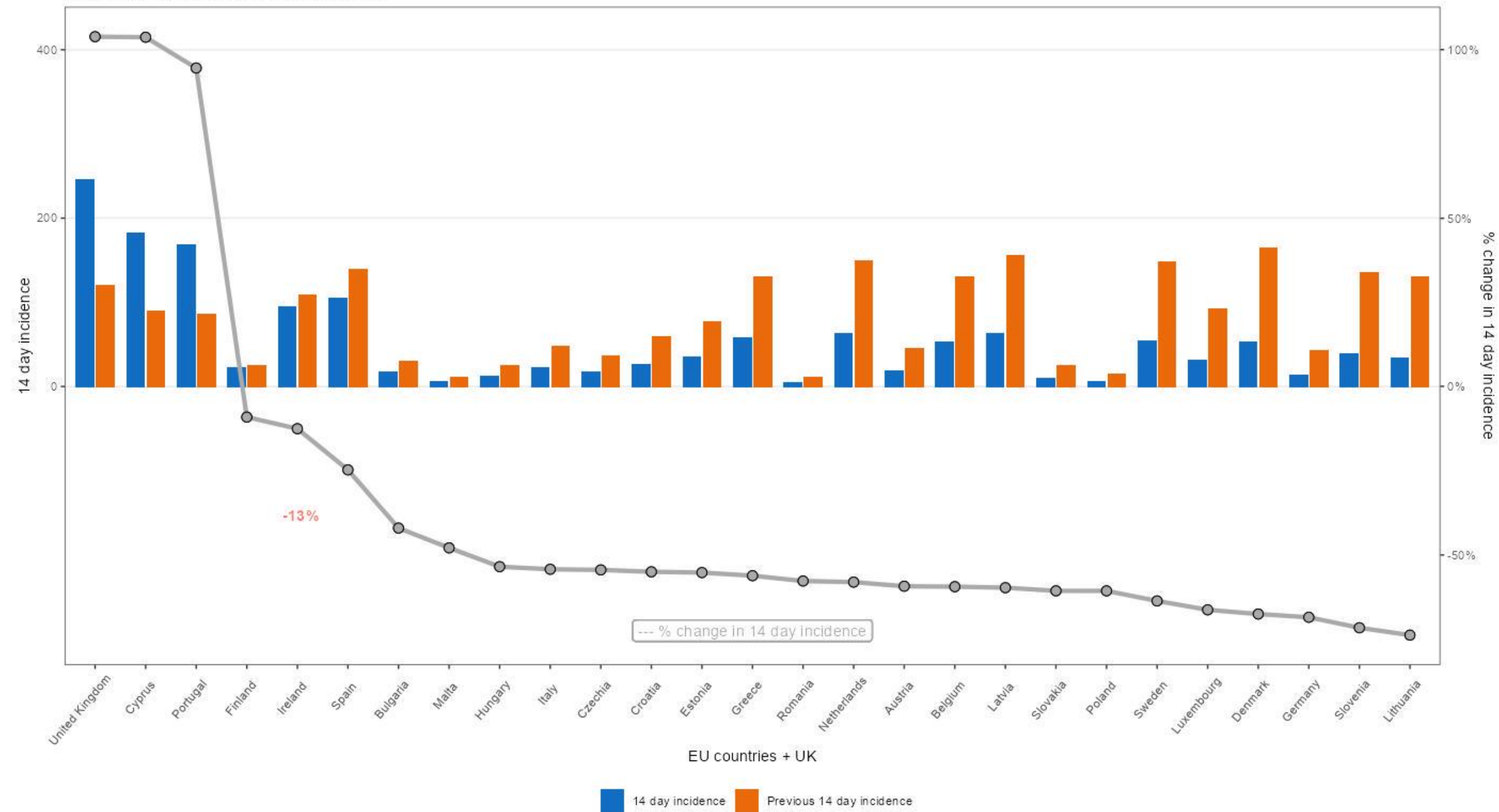
European Data

EU/UK ranked by 14 day percentage change (27th June)

EU and the UK	14 day incidence	Previous 14 day incidence	% change in 14 day incidence
United Kingdom	245.8	120.6	104%
Cyprus	182.1	89.4	104%
Portugal	167.7	86.2	95%
Finland	22.8	25.1	-9%
Ireland**	94.5	108.0	-13%
Spain	104.5	138.9	-25%
Bulgaria	17.2	29.7	-42%
Malta	5.7	10.9	-48%
Hungary	11.6	24.9	-54%
Italy	21.8	47.8	-54%
Czechia	16.7	36.8	-54%
Croatia	26.5	59.0	-55%
Estonia	34.5	77.2	-55%
Greece	57.3	130.8	-56%
Romania	4.7	11.1	-58%
Netherlands	62.5	149.2	-58%
Austria	18.2	44.8	-59%
Belgium	53.0	130.6	-59%
Latvia	62.6	155.4	-60%
France	43.9	109.4	-60%
Slovakia	9.6	24.5	-61%
Poland	5.7	14.6	-61%
Sweden	53.9	148.4	-64%
Luxembourg	31.0	92.0	-66%
Denmark	53.4	164.6	-68%
Germany	13.4	42.5	-69%
Slovenia	38.3	135.3	-72%
Lithuania	34.1	130.3	-74%

- As of 16th Dec, this daily data is now sourced from Our World In Data (OWID) instead of ECDC as they have switched to weekly reporting (Thursday evenings).
- OWID source their confirmed cases and deaths data from the COVID-19 Data Repository by the Center for Systems Science and Engineering (CSSE) at Johns Hopkins University (JHU). <https://github.com/owid/covid-19-data/tree/master/public/data>
- ****Due to the cyber attack on the HSE's IT systems, daily case numbers from 14 May onwards are based on a data extract from the Covid Care Tracker.**

European 14 incidence rates (27 June)



EU/UK ranked by 7 day percentage change (27th June)

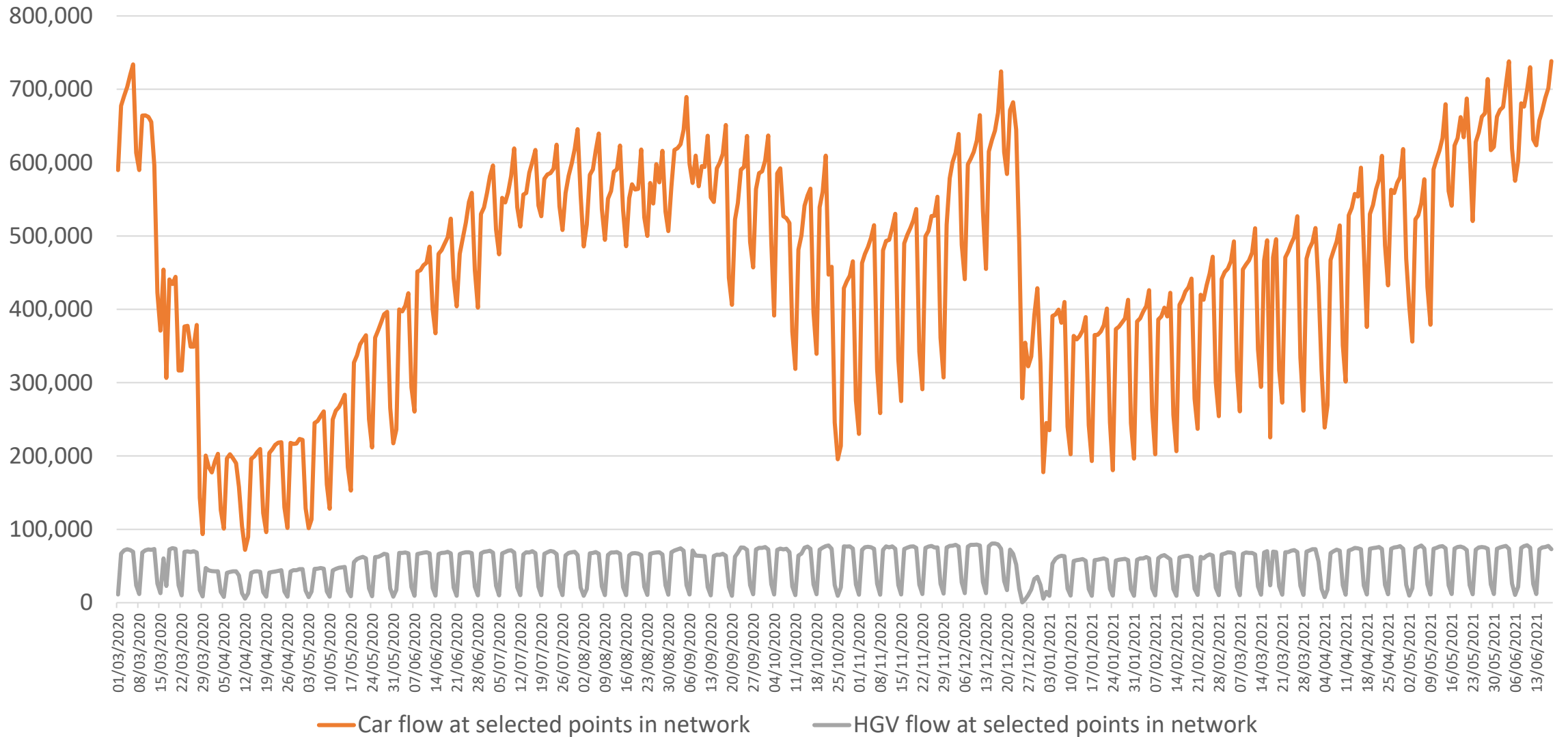
EU and the UK	7 day incidence	Previous 7 day incidence	% change in 7 day incidence
Sweden	42.2	11.7	261%
Cyprus	130.4	51.7	152%
Malta	3.9	1.8	113%
United Kingdom	151.1	94.7	60%
Finland	13.5	9.3	46%
Slovakia	5.6	4.1	36%
Portugal	93.1	74.6	25%
Ireland**	48.6	45.9	6%
Spain	53.5	51.0	5%
Belgium	26.4	26.6	-1%
Czechia	8.1	8.7	-7%
Croatia	11.7	14.9	-21%
France	19.1	24.8	-23%
Luxembourg	13.4	17.6	-24%
Hungary	5.0	6.6	-24%
Greece	24.6	32.7	-25%
Denmark	22.4	31.0	-28%
Austria	7.6	10.6	-28%
Bulgaria	7.2	10.0	-28%
Romania	1.9	2.8	-30%
Netherlands	25.5	37.1	-31%
Poland	2.3	3.4	-33%
Germany	5.2	8.2	-36%
Italy	8.4	13.4	-37%
Estonia	12.2	22.3	-45%
Latvia	21.2	41.4	-49%
Slovenia	12.4	25.9	-52%
Lithuania	10.8	23.3	-53%

- As of 16th Dec, this daily data is now sourced from Our World In Data (OWID) instead of ECDC as they have switched to weekly reporting (Thursday evenings).
- OWID source their confirmed cases and deaths data from the COVID-19 Data Repository by the Center for Systems Science and Engineering (CSSE) at Johns Hopkins University (JHU). <https://github.com/owid/covid-19-data/tree/master/public/data>
- ****Due to the cyber attack on the HSE's IT systems, daily case numbers from 14 May onwards are based on a data extract from the Covid Care Tracker.**

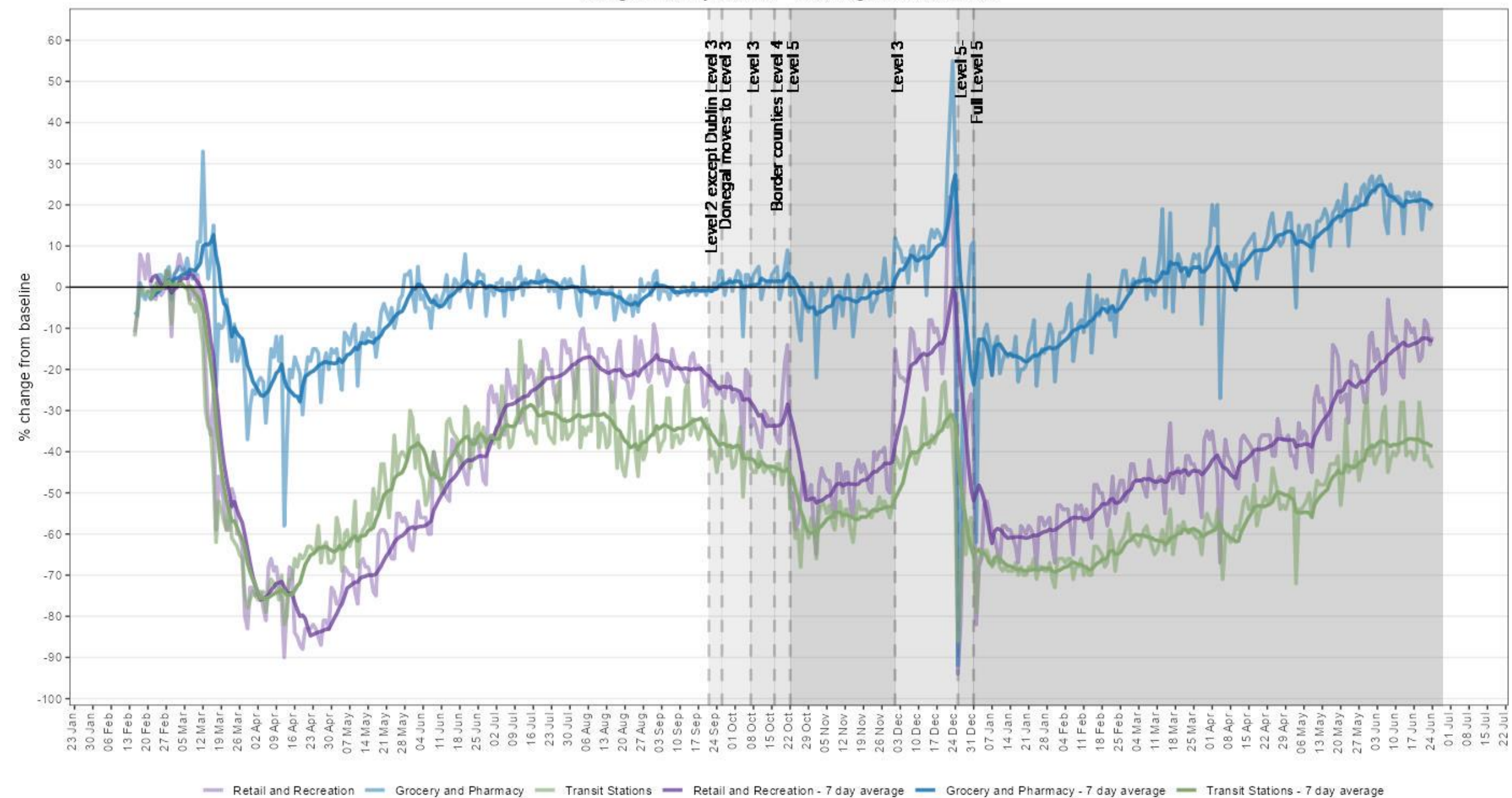


Mobility Data

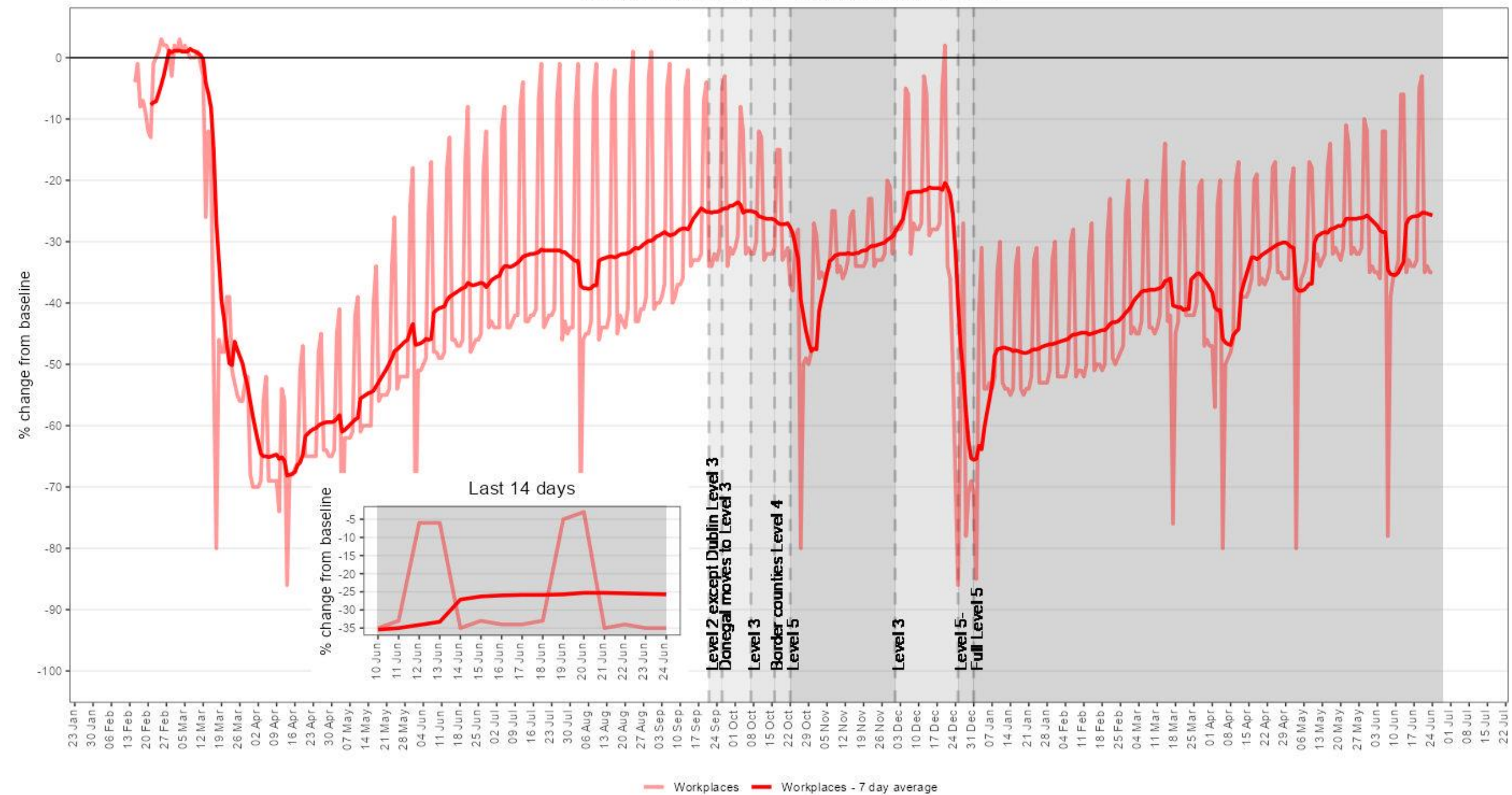
Daily Traffic Flow



Google Mobility Ireland - % change from baseline



Google Mobility Ireland - % change from baseline



Apple Mobility Ireland - % change from baseline

