



An Roinn Sláinte
Department of Health

NPHET COVID Update 17th June 2021

Cases, numbers in hospital and intensive care

The last two weeks have seen significant reductions in all indicators, with case numbers, the number of people in hospital and ICU, and the number of new admissions per day all decreasing.



	Apr 2020	Summer 2020	Oct 2020	Dec 2020	Jan 2021	19 May	26 May	2 Jun	9 Jun	16 Jun	Daily count 16 Jun
Cases confirmed per day	859 <small>18-04</small>	8.7 <small>25-06</small>	1158 <small>21-10</small>	262 <small>12-12</small>	6520 <small>10-01</small>	428	422	402	368	322	329
14-day incidence <i>per 100,000 population</i>	212 <small>19-04</small>	3.0 <small>04-07</small>	306 <small>26-10</small>	79 <small>09-12</small>	1532 <small>15-01</small>	125	125	121	113	102	
Hospital in-patients	862 <small>17-04</small>	9 <small>02-08</small>	333 <small>01-11</small>	198 <small>16-12</small>	1949 <small>24-01</small>	105	109	96	77	62	57
<i>Hospital admissions per day</i>	85 <small>04-04</small>	<1 <small>10-07</small>	27 <small>26-10</small>	11 <small>13-12</small>	158 <small>15-01</small>	11	12	9	9	7	9
ICU confirmed cases	150 <small>14-04</small>	4 <small>04-08</small>	43 <small>04-11</small>	26 <small>27-12</small>	217 <small>28-01</small>	39	41	36	28	22	19
<i>ICU admissions per day</i>	14 <small>31-03</small>	<1 <small>03-06</small>	4 <small>03-11</small>	1 <small>16-12</small>	20 <small>17-01</small>	2	2	1	<1	<1	0
Deaths confirmed per day	46 <small>22-04</small>	<1 <small>30-07</small>	7 <small>01-12</small>	4 <small>17-12</small>	57 <small>03-02</small>	-	-	-	-	-	-

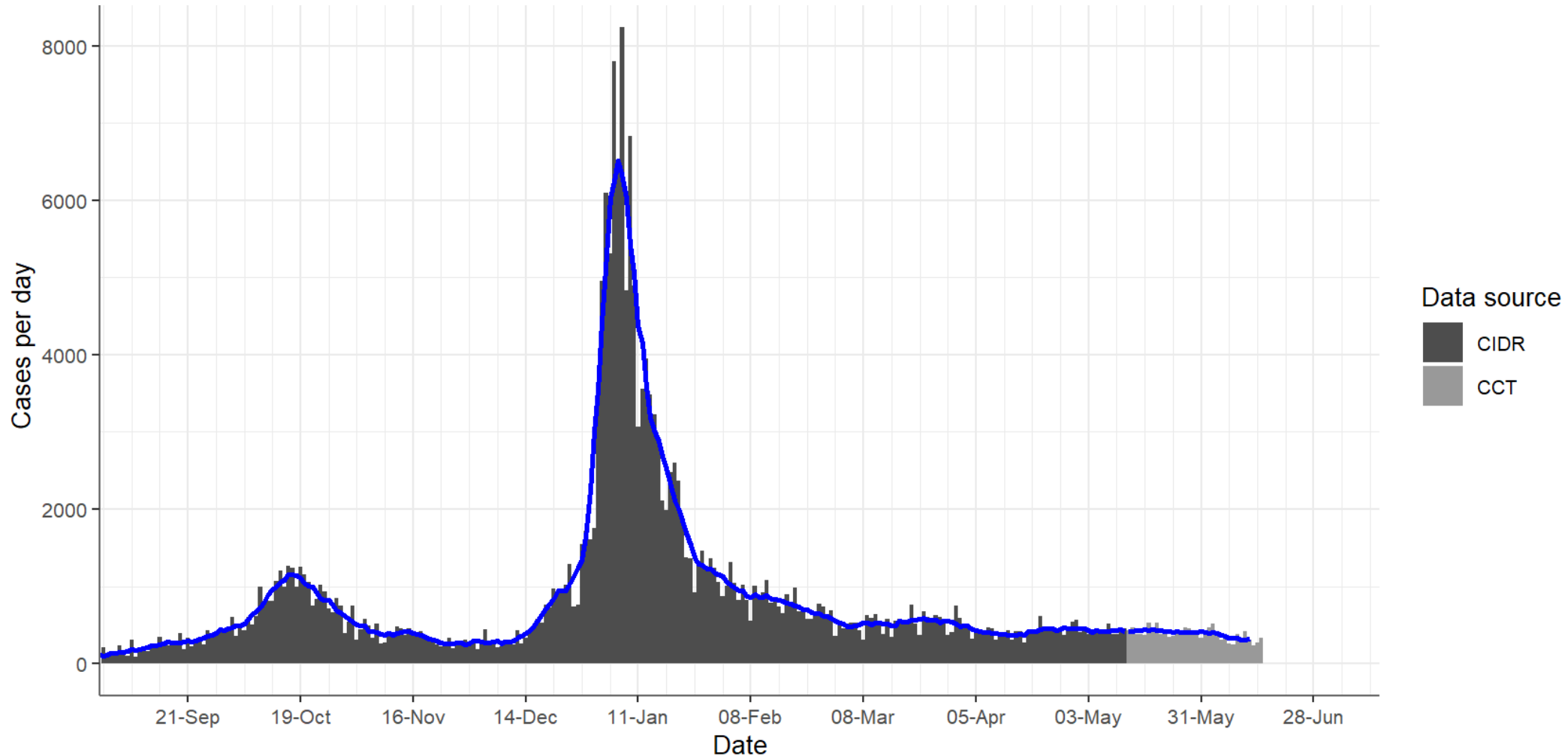
Data are 7-day averages (the indicated day and the preceding 6 days, rounded to the nearest whole number) with the exception of 14 day cumulative incidence, which is the total number of cases in the preceding 14 days per 100,000 population. The highest and lowest values of each indicator are given for each wave of the pandemic, along with the date on which that value was recorded, as well as the data for recent weeks. The historic incidence data may change due to denotification of cases. Case data from 13 May 2021 onward are estimates based on the number of positive tests reported. Data on deaths is incomplete and not reported



Cases & Incidence Rates

Confirmed cases each day

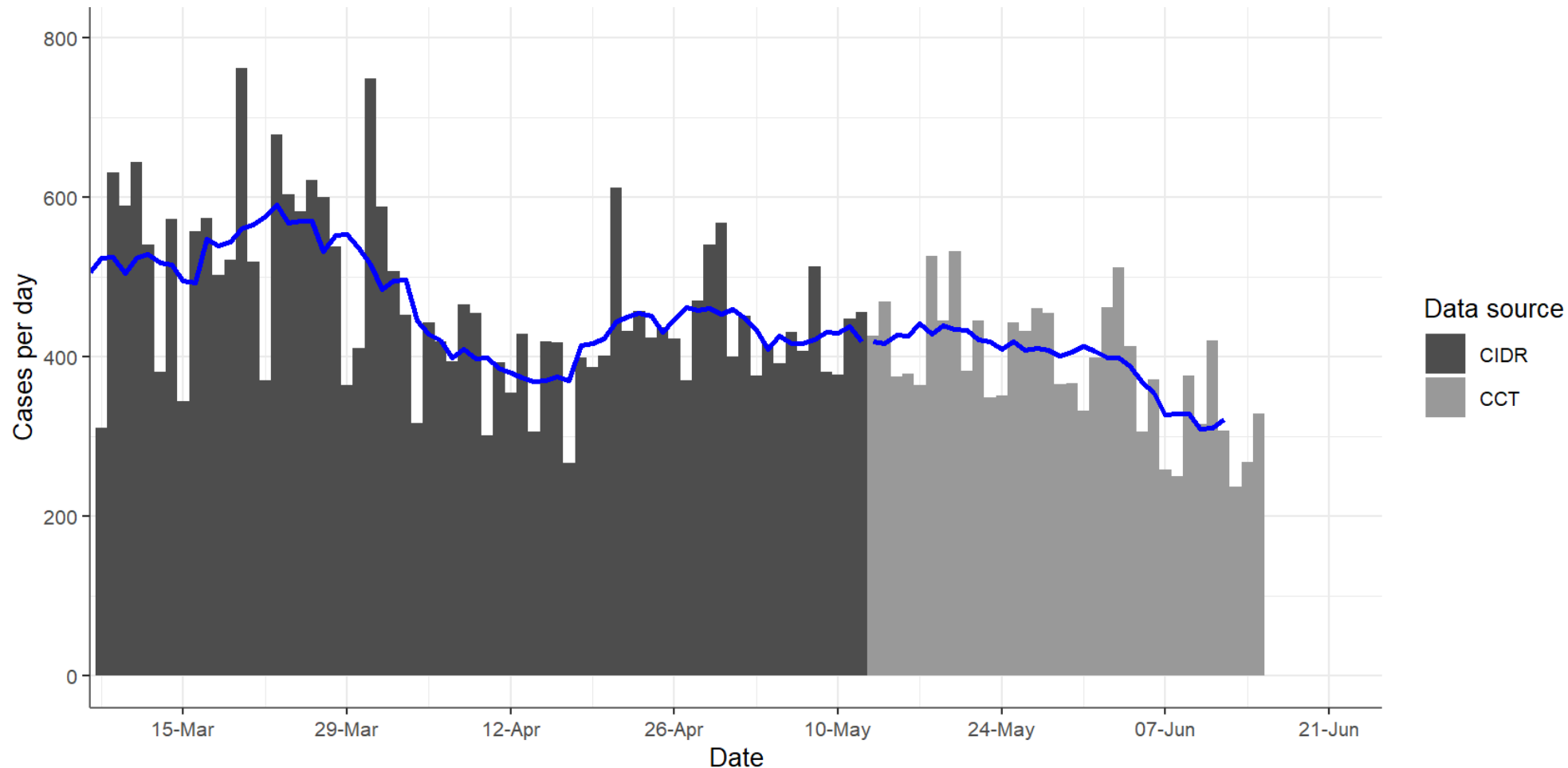
Daily and weekly count and 7-day rolling average. The 7-day average peaked at 1158 on 21 October, reached a low of 262 on 12 December, peaked again at 6520 on 10 January. There was a long period in April and May where cases counts were stable at 400-450 per day, but incidence has decreased in recent weeks and the 7-day average is now **322, down from 368** seven days ago..



Daily count (bars) and 7-day average (line) of the number of laboratory confirmed new cases by date on which they were notified HPSC (CIDR data). Case counts may change due to denotification of cases. Case data from 13 May 2021 onward (light grey) are provisional based on the number of positive tests reported through the HSE contact management programme (CCT data).

Confirmed cases each day

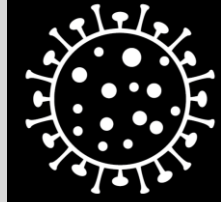
Daily and weekly count and 7-day rolling average in recent weeks showing decline in incidence since beginning of June



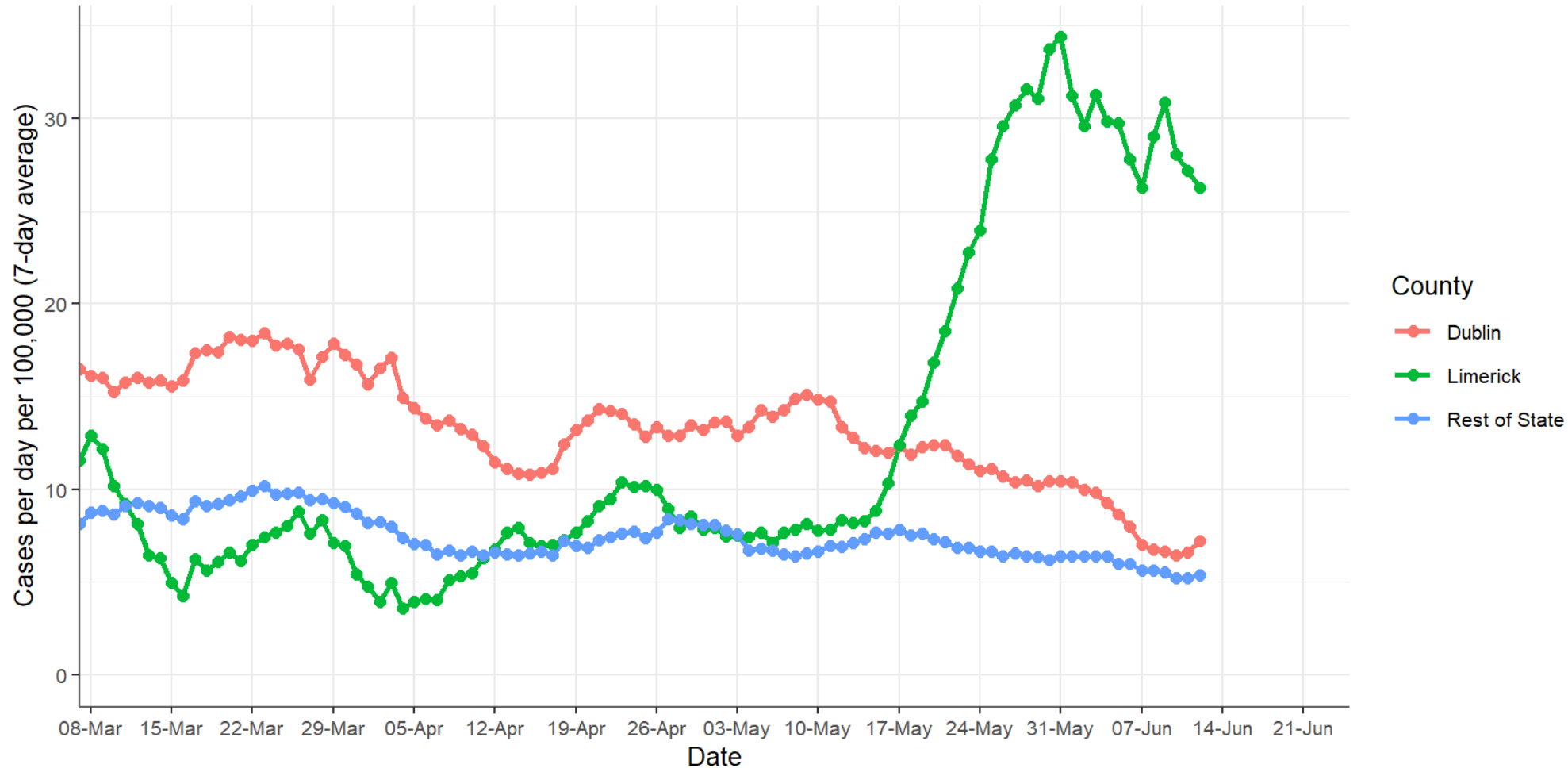
Daily count (bars) and 7-day average (line) of the number of laboratory confirmed new cases by date on which they were notified HPSC (CIDR data). Case counts may change due to denotification of cases. Case data from 13 May 2021 onward (light grey) are provisional based on the number of positive tests reported through the HSE contact management programme (CCT data).

Incidence in Limerick

The incidence in Limerick rose rapidly in mid-May to six times that in the rest of the State; it is now declining slowly.



Coronavirus
COVID-19
Public Health
Advice



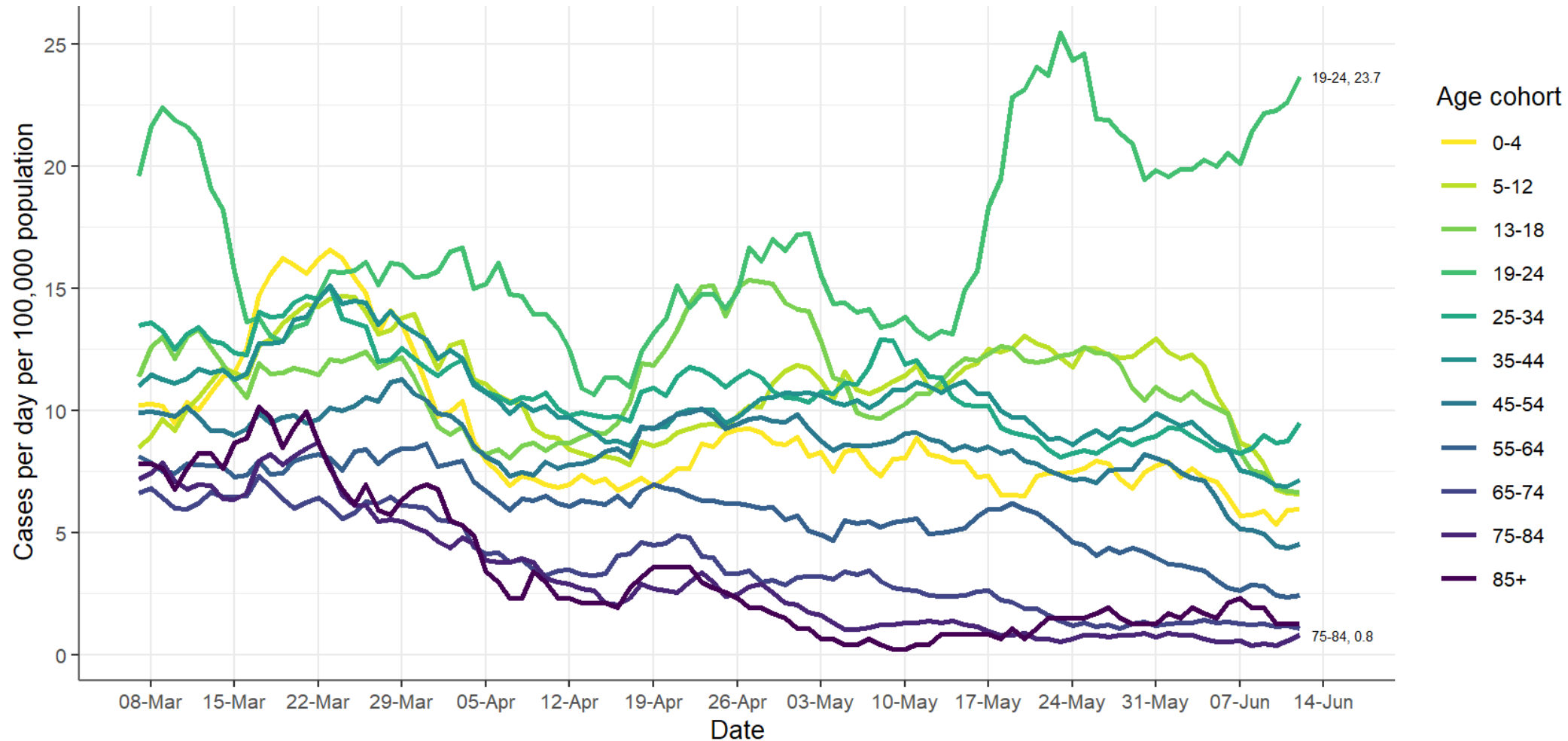
CIDR data to midnight Wed 12 May 2021 and CCT data to Tue 15 Jun 2021. Cases dated by event creation / case creation date



Rialtas na hÉireann
Government of Ireland

Age-specific incidence

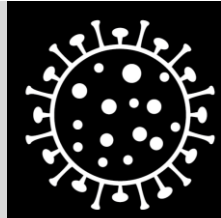
The incidence in those aged 65 years and older remains very low, and the incidence in those aged 50-64 years is now decreasing as vaccination takes effect in these cohorts. Incidence in children of school-going age has also decreased markedly since the beginning of June. Incidence in those aged 19-24 years is high, three times that of those aged 25-34 years.



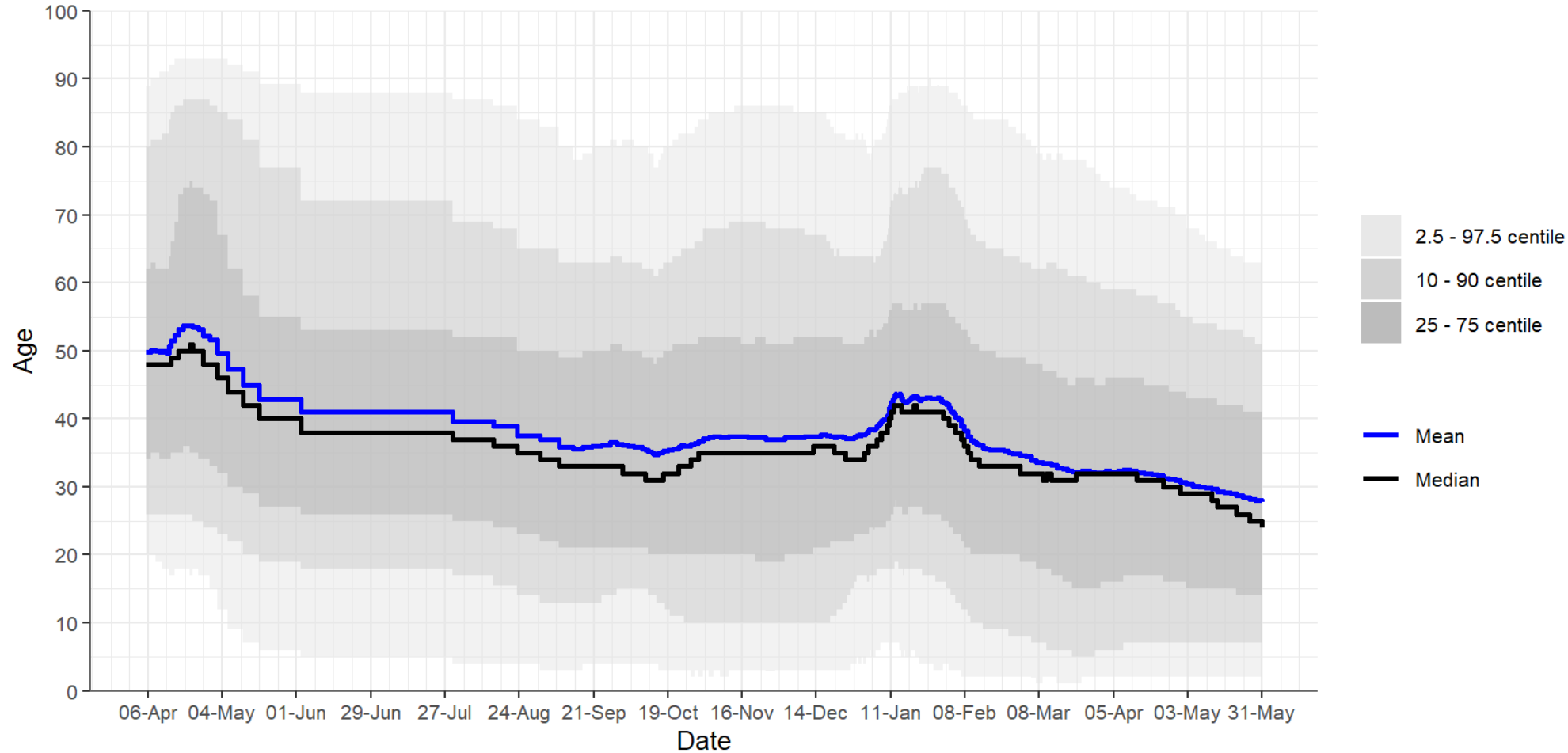
Age-specific incidence (cases per day per 100,000 population). 7-day moving average.
CIDR data to midnight Wed 12 May 2021 and CCT data to Tue 15 Jun 2021. Cases dated by event creation / case creation date

Age distribution of cases

The decrease in the median age of cases, and the compression of the age distribution, with the 97.5th centile falling from almost 90 years of age to below 65 years of age is due to the near-elimination of clinically-significant infection in vaccinated age groups.



Coronavirus
COVID-19
Public Health
Advice



Mean, median and quantile age of cases, calculated over a moving window of 10000 cases, advanced 1000 cases each iteration. CIDR data to midnight Wed 12 May 2021 and CCT data to Tue 15 Jun 2021. Cases dated by event creation / case creation date



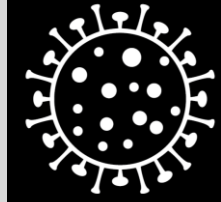
Rialtas na hÉireann
Government of Ireland



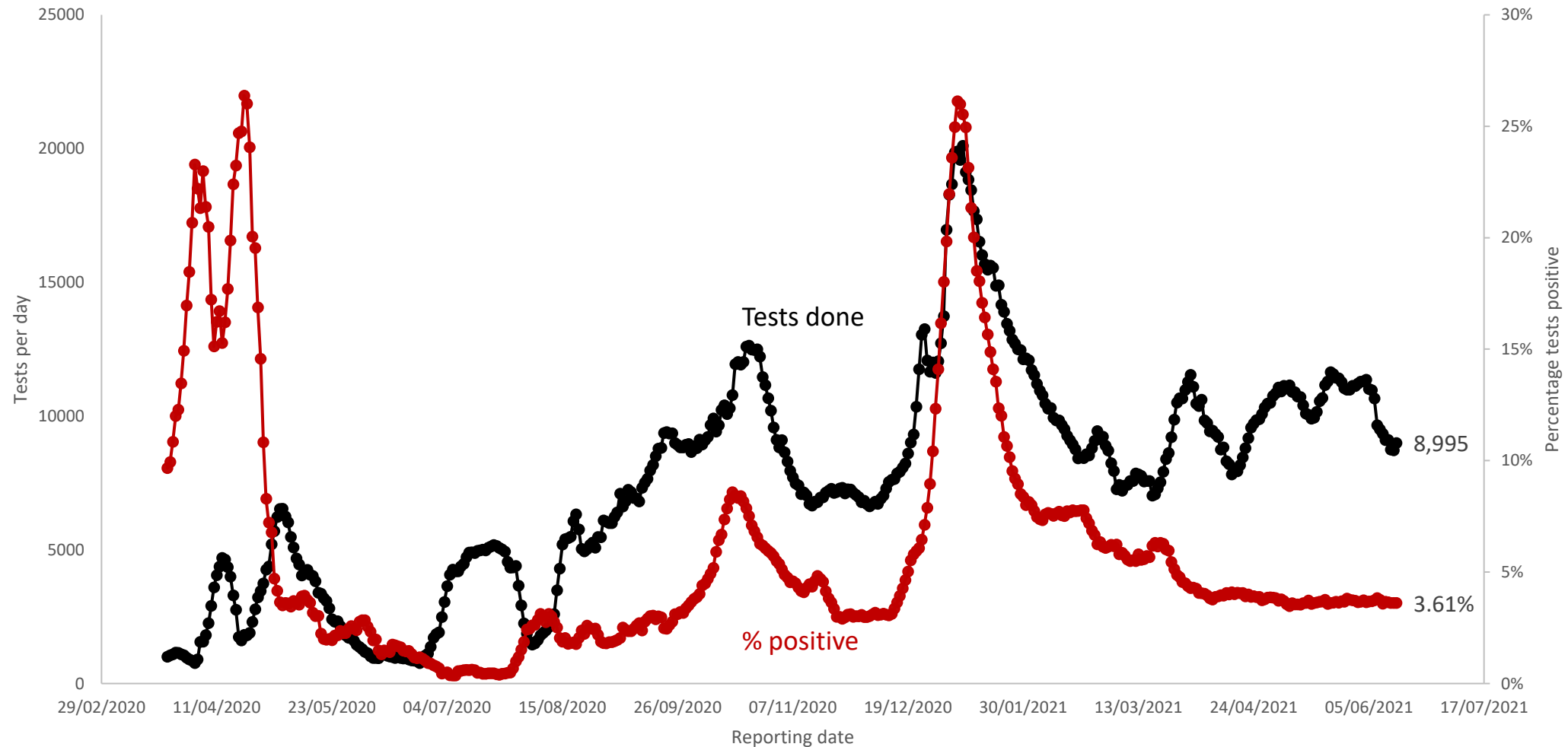
Testing

Daily test positivity: public health laboratories

The daily average number of tests done and positivity rates for public health laboratories show the recent increases in demand for testing with a reduction or no change in positivity rate. Positivity rates in public health laboratories have been stable at less than 4% since early April



Coronavirus
COVID-19
Public Health
Advice

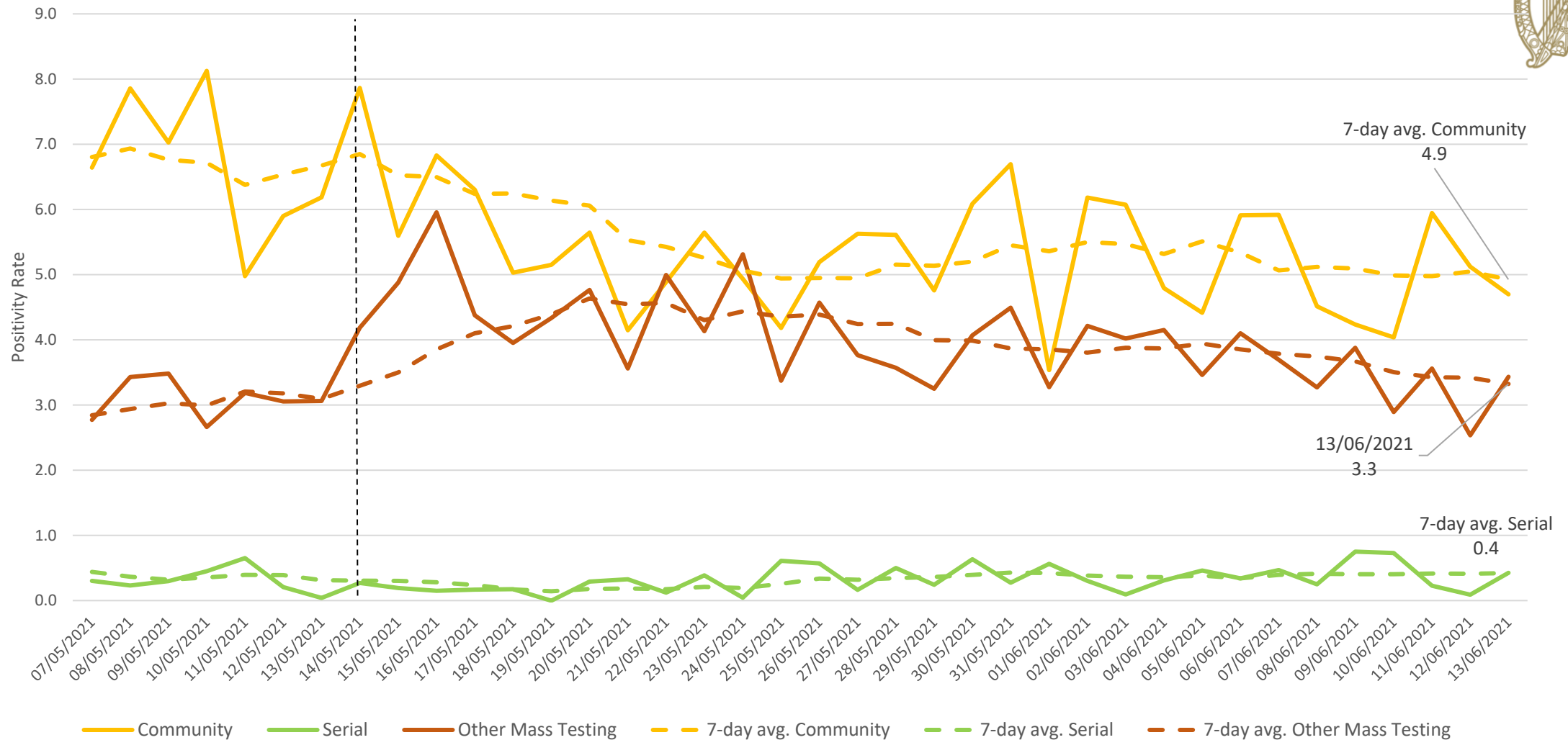


Daily tests done (black) and percentage of tests reported positive (red) per day from NVRL and associated laboratories, plus Cherry Orchard. Data are 7-day moving averages.



Rialtas na hÉireann
Government of Ireland

Positivity Rate and 7-day Moving Average by Testing Pathway (data on acute hospital testing not currently available)



Updated 15/06/2021. Source: CRM data, HSE Contact and Tracing Team.

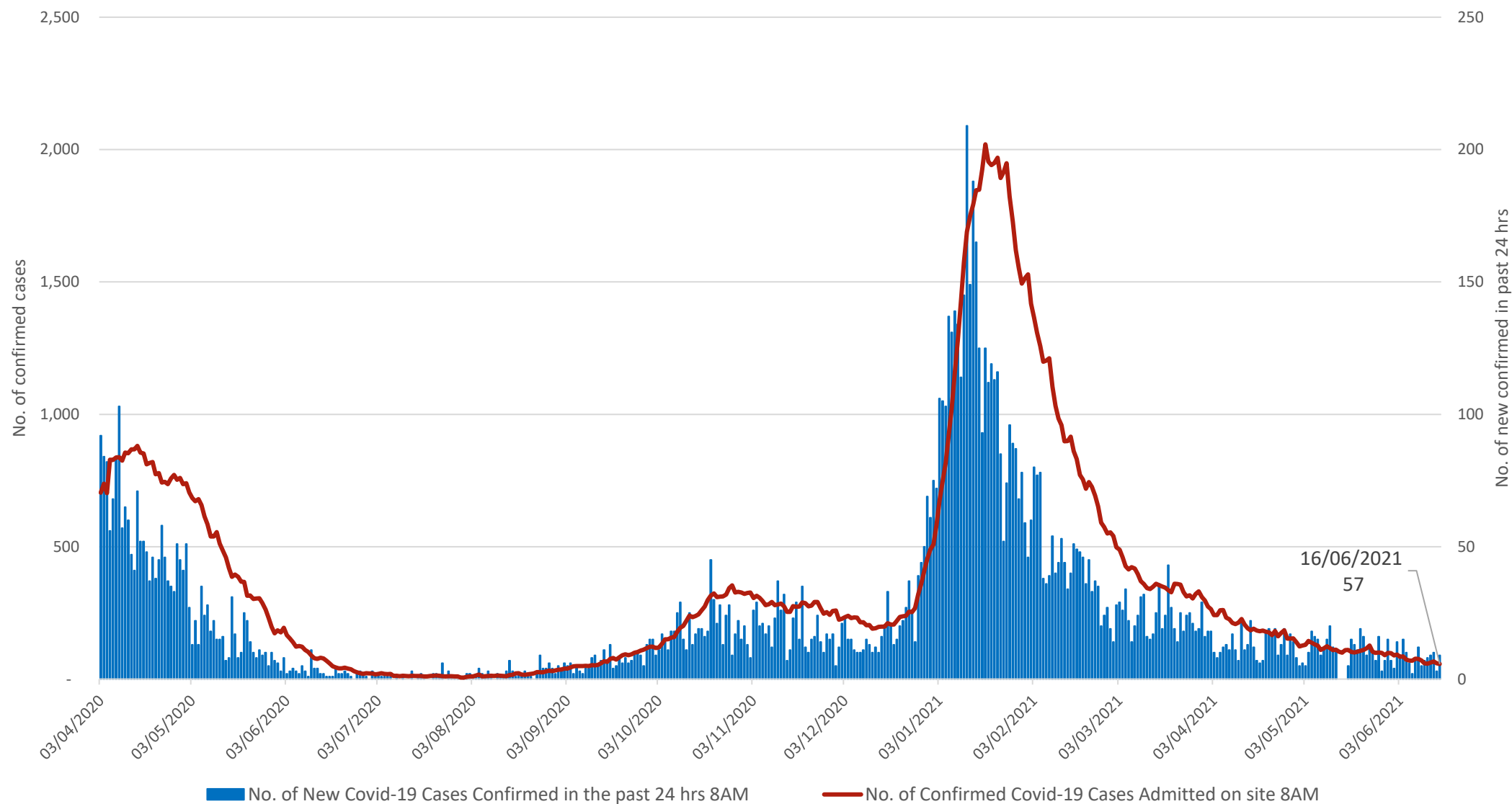
Acute=Swabs taken in acute hospitals; Community=Swabs taken in Community Test Centres for GP and CMP referrals (symptomatic, close contact etc), excluding serial and mass testing; Serial=Swabs taken under the Serial Testing Programme in Nursing Homes, Food Production, Mental Health and Disability; Other Mass=Swabs taken in response to an outbreak/case in facilities including workplaces, residential institutions, schools, nursing homes (ex. acute hospitals) and walk-in test centres



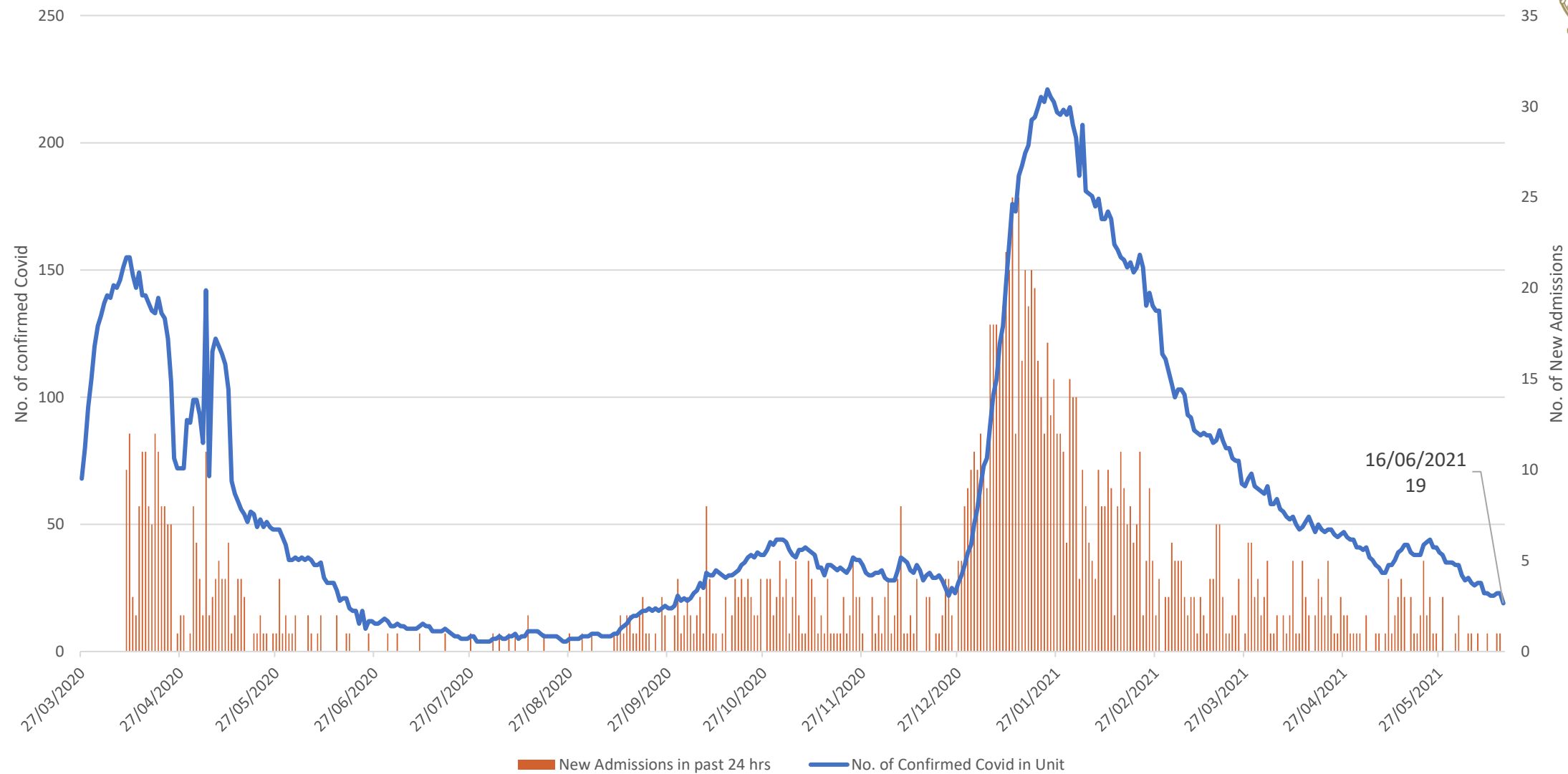
An Roinn Sláinte
Department of Health

Hospitals & ICU

Total No. of Confirmed Covid Cases in Hospital at 8AM & No. of New Confirmed Covid Cases in Past 24 hrs



Total No. of Confirmed Covid Cases in ICU at 11.30AM &
No. of New Confirmed Covid Admissions to ICU in past 24 hrs
(includes all reporting public & private hospitals and may differ from no. reported by HSE in public hospital ICU)





Outbreaks & Clusters

Weekly Summary – week 23, 2021



Total number of outbreaks in week 23, 2021 n=80 compared with week 22, 2021 n=129

- **Vulnerable groups**
 - Irish Travellers
 - 4 new outbreaks with 23 linked cases (range: 3-9)
 - No other outbreaks in other vulnerable groups newly reported in week 23
- **Workplace outbreaks**
 - 4 new outbreaks in food industry with 17 linked cases (range: 2-8)
 - 1 new construction sector outbreaks with 9 linked cases
- **Residential institution outbreaks**
 - No new residential institution outbreaks reported this week
- **Nursing Homes & Community Hospitals**
 - 1 new nursing home outbreak in week 23 with 3 linked cases
- **Acute hospitals**
 - 1 new acute hospital outbreak notified in week 23 with 2 linked cases
- **Schools**
 - 13 new outbreaks in week 23 with 40 linked cases (range: 2-7)
- **Childcare facilities**
 - 8 new outbreaks in week 23 with 29 linked cases (range: 1-9)
- **Third-level students/University/college**
 - 1 new outbreak notified in week 23 with 6 linked in a University/College location
 - 2 new outbreaks in week 23 with 8 linked cases (range: 2-6) associated with third level students that have occurred at another location

Key healthcare/residential setting COVID-19 outbreaks, weeks 20-23 2021



Healthcare setting	Week 20		Week 21		Week 22		Week 23	
	New outbreaks	Linked cases	New outbreaks	Linked cases	New outbreaks	Linked cases	New outbreaks	Linked cases
Nursing homes	0	0	0	0	1	2	1	3
Community Hospitals	0	0	0	0	0	0	0	0
Acute hospitals	0	0	0	0	0	0	1	2
Disability settings	0	0	0	0	1	2	0	0
Mental Health	0	0	0	0	0	0	0	0
Residential centres for older people*	0	0	0	0	1	5	0	0

*short-stay unit/step-down facility for an acute hospital

Update on current week

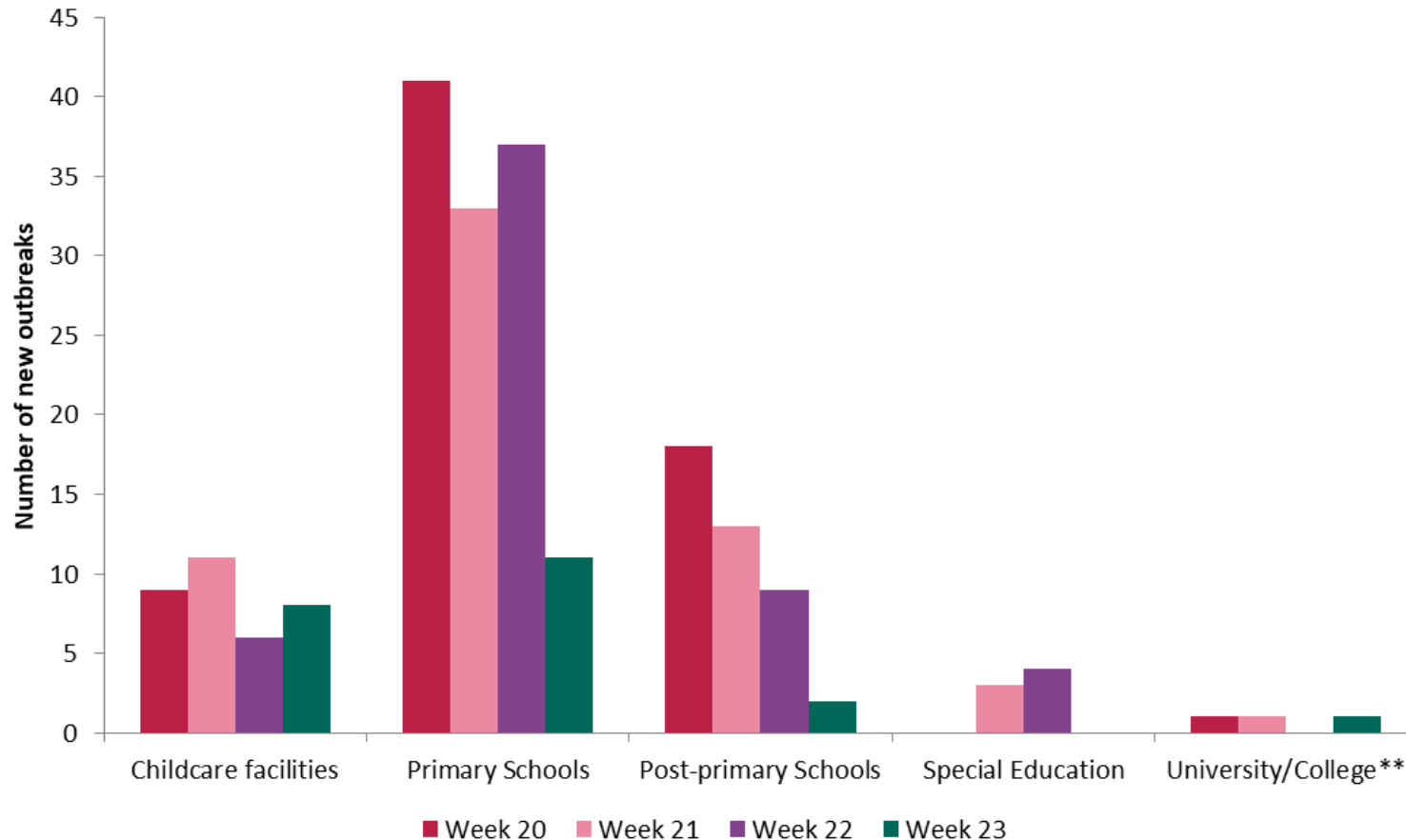
- There was 1 newly reported nursing home outbreak, involving 3 cases, reported in week 23
- There was 1 newly reported acute hospital outbreak, involving 2 cases, reported in week 23

Overview

Since week 20 2021, there have been 5 outbreaks associated with healthcare settings

- 2 in Nursing Homes
- 1 acute hospital
- 1 in a disability settings
- 1 in a residential centre for older people

COVID-19 outbreaks in educational settings by category, weeks 20-23 2021



Update on current week

- There were 13 newly reported school outbreaks
 - 11 in primary school, involving 35 cases
 - 2 in post primary school, involving 5 cases
- There were 8 newly reported CCF outbreaks, involving 29 cases
- There was 1 newly reported university/college outbreaks, involving 6 cases

Overview

- The number of primary school outbreaks has been high in recent weeks but decreased in week 23
- The number of post-primary school outbreaks continues to decrease in line with school holidays

**These outbreaks are associated with a university/college location and do not include outbreaks among third level students that occurred at other locations.

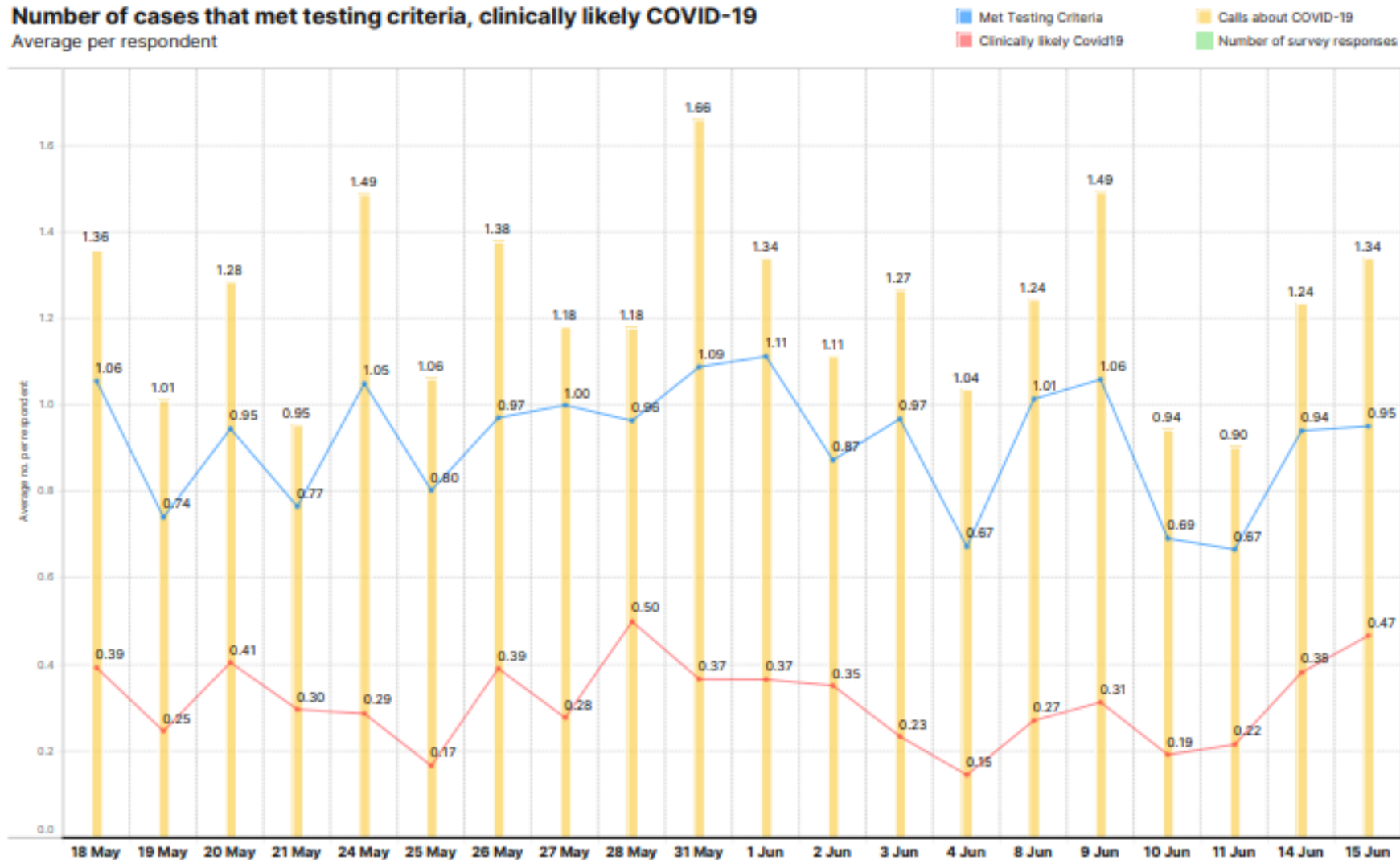


Test & Trace Update



Number of cases that met testing criteria, clinically likely COVID-19

Average per respondent



Testing/sampling and contact tracing NPHET update



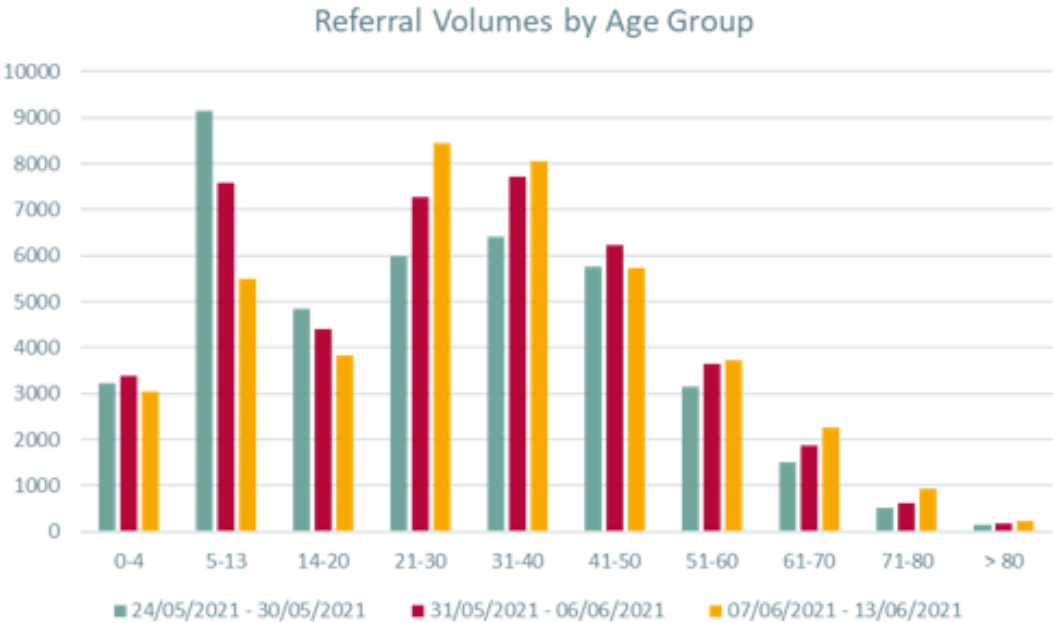
Community test referrals

From the 9th – 15th June there were c.60,405 community referrals. This weekly total has decreased by c.8.2% since the same time-period the previous week (2nd -8th June; c.65,803 total referrals).

From the 7th – 13th June, the group with the largest number of referrals is the 21-30 age group, which makes up 20.2% of all referrals. The detected rate for the 21-30 age group is c.6.7%.

Laboratory Testing

Over the seven-day period 9th-15th June, there has been approximately 87,061 lab tests completed in community and private labs (excludes acutes).



CMP close contact update (7th – 13th June)



- The number of close contacts reported during the week ending 13th June was 9,258, a 28% decrease on the previous week (12,872).
- In total, 96% of these close contacts have been contacted at the time of report preparation.
- The mean number of close contacts per case (including cases with zero close contacts) increased from 2.6 for the week ending 6th June to 2.8 for the week ending 13th June.
- The number of complex contact episodes identified during the week ending 13th June was 1,019, an 18% decrease from the week ending 6th June (1,250).

Source: HSE – COVID-19 Contact Management Programme Weekly report

Note: A ransomware attack was made on the HSE on 14th May 2021. This severe cyber-attack caused significant disruptions to HSE IT infrastructure, including the systems enabling contact tracing. While the CovidCare Tracker system remained operational following the attack, interfaces with a number of enabling systems have been disrupted. As a result, the number of cases reported via the CovidCare Tracker and the associated number of close contacts may be underestimated. The data presented in this report should be interpreted in the context of the impact of the ransomware attack and the changes in process.

Variants update



Total confirmed variants of concern cases:

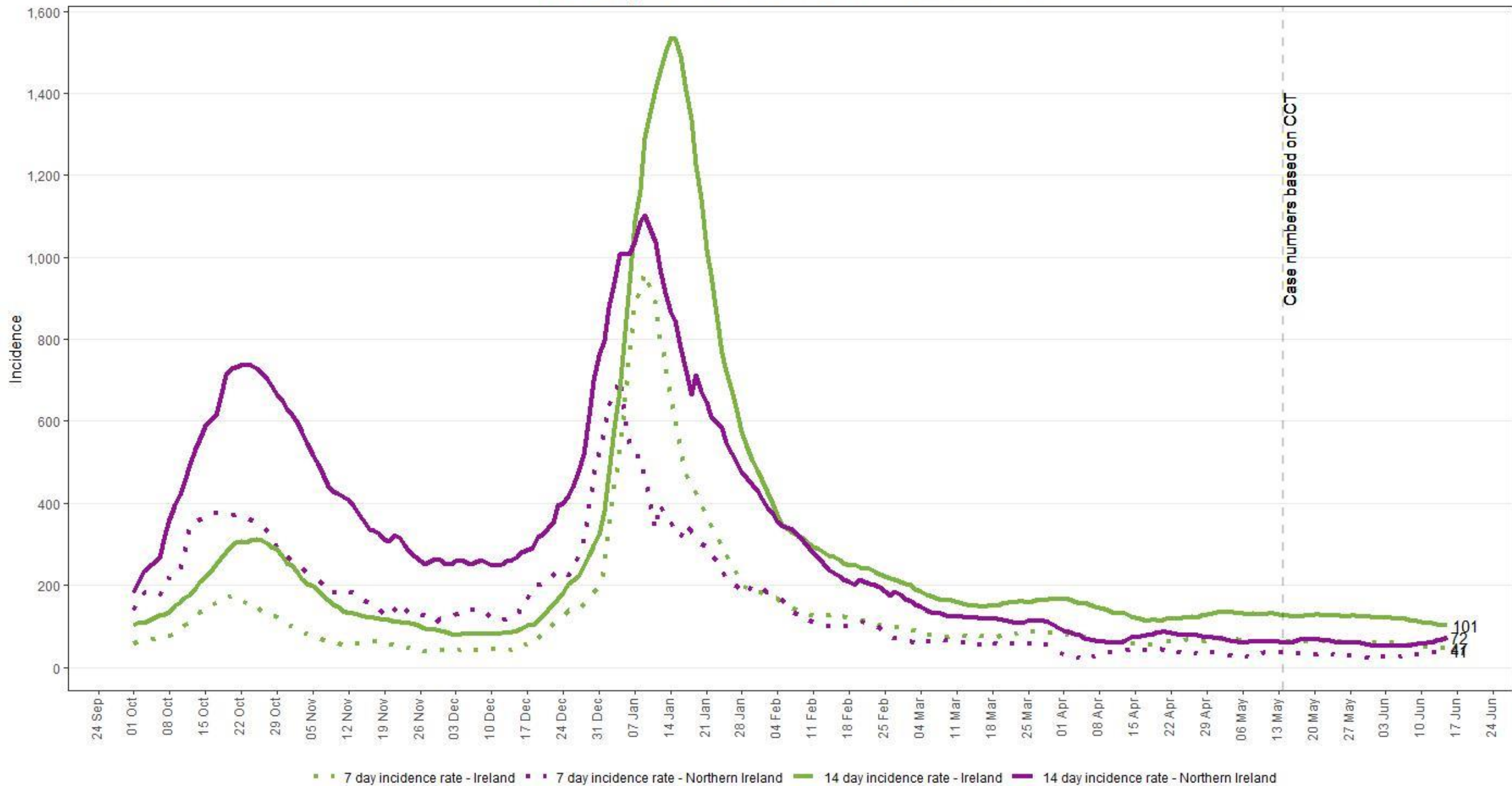
- P.1 (Gamma): 29
- B.1.351 (Beta): 72
- B.1.617.2 (Delta): 180

Total of other confirmed variants of note/of interest cases:

- B.1.617.1 (Kappa): 140
- B.1.525 (Eta): 68
- B.1.526 (Iota): 11
- P.2 (Zeta): 15
- B.1.429 (Epsilon): 7
- B.1.1.7 with E484K mutation: 2
- B.1.1.318: 211
- A.27: 2

(Based on NVRL and Eurofins-Biomnis results up to 15th June 2021)

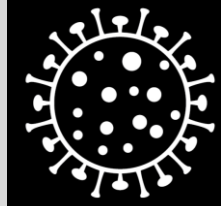
7 and 14 day Incidence rates for Ireland and Northern Ireland



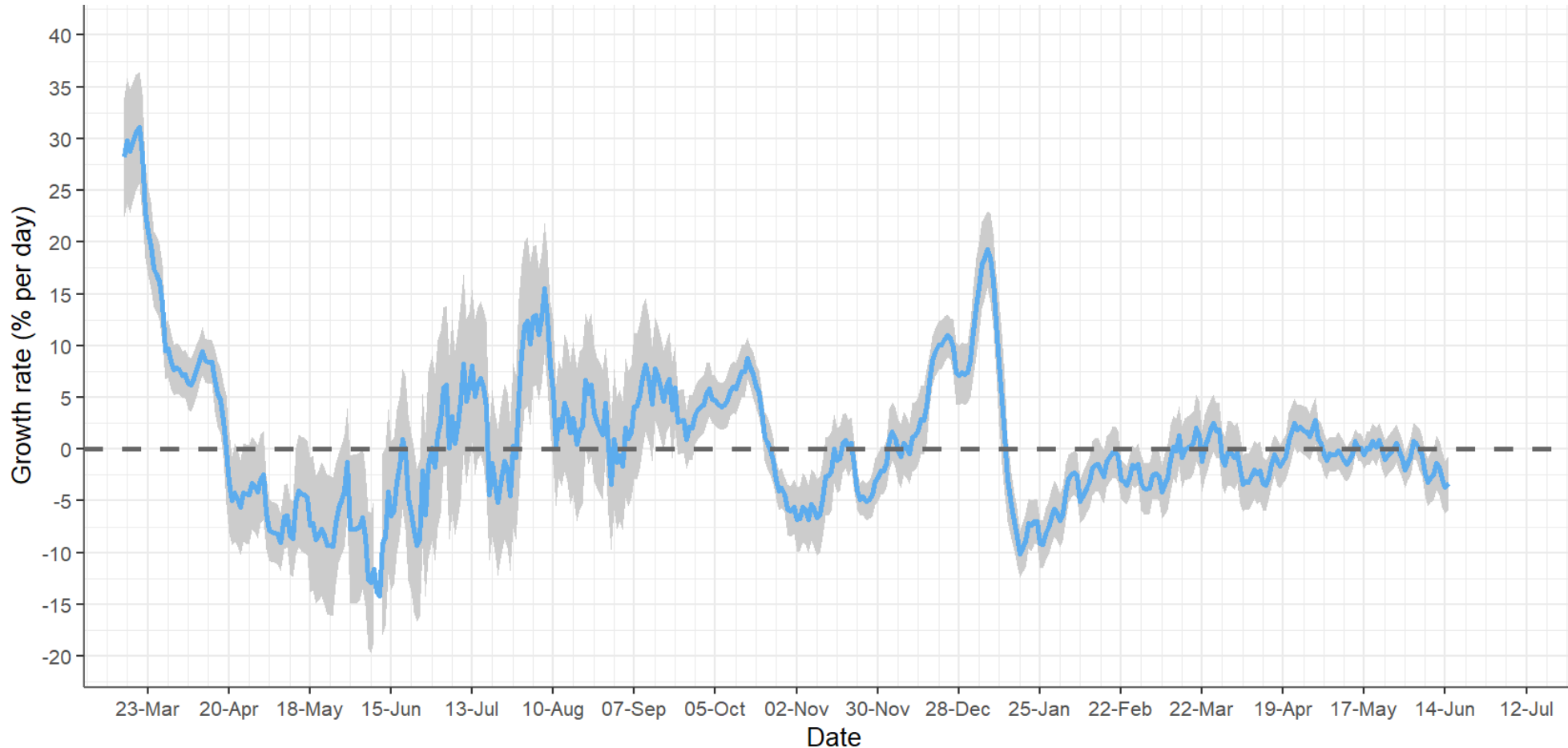
Due to the cyber attack on the HSE's IT systems, daily case numbers from 14 May onwards are based on a data extract from the Covid Care Tracker. Source: health-ni.gov.uk daily data 15/06/21. Incidence calculated using the 2016 population estimates for both ROI and NI.

Growth rate

The growth rate is currently estimated at -3% (with high levels of uncertainty, confidence interval -1% to -6%)



Coronavirus
COVID-19
Public Health
Advice



CIDR data to midnight Wed 12 May 2021 and CCT data to Tue 15 Jun 2021. Cases dated by event creation / case creation date.
. Growth rate in case counts using a 14-day window, cases dated by event (notification) date. Mean and 95% confidence intervals



Rialtas na hÉireann
Government of Ireland

Situation analysis 16 June 2021

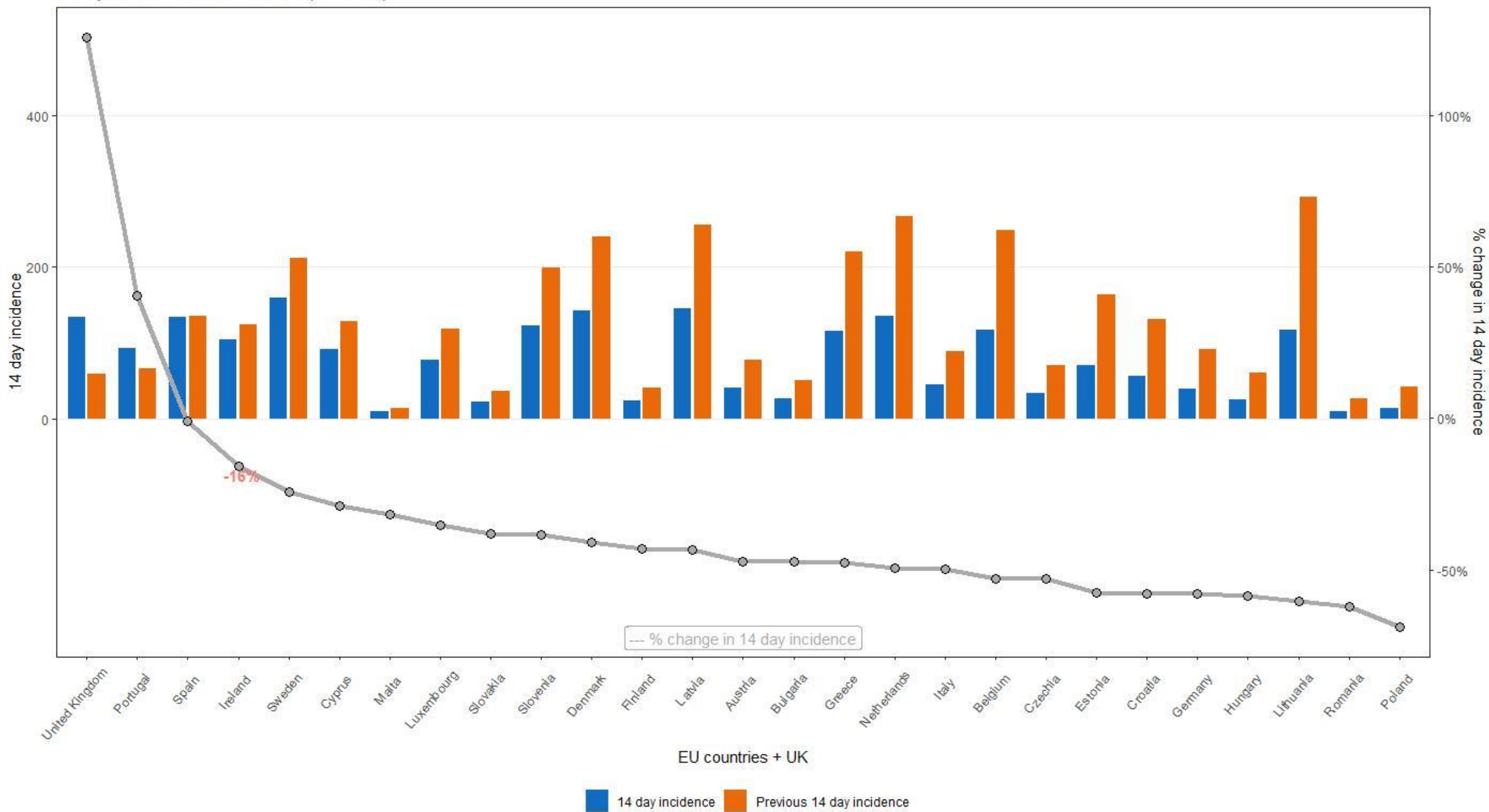


- Incidence decreasing
 - Cases (7-day average) 322 cases per day; 14-day incidence 101 per 100,000
 - 2301 cases were notified last week, down from 2792 the week before
 - Test positivity stable
 - Growth/decline rate at -3% per day (-1% to -6%), reproduction number less than 1
 - Numbers in hospital and ICU decreasing
 - Recent sustained increase in incidence in young adults aged 19-24 years
- A broadly positive outlook, but we remain vulnerable in the coming weeks as the wider population is not yet protected by vaccination
 - The situation remains improving
 - Outdoors is lower risk, but we still need to take the basic precautions
 - We need to keep close contacts low, and minimize the risk of transmission during any close contact



European Data

European 14 incidence rates (15 June)



EU/UK ranked by 14 day incidence (16th June)

EU and the UK	14 day incidence	Previous 14 day incidence	% change in 14 day incidence
Sweden	160.04	211.2	-24%
Latvia	144.68	256.07	-43%
Denmark	142.31	240.67	-41%
Netherlands	134.7	266.92	-50%
United Kingdom	133.55	59.09	126%
Spain	133.51	134.6	-1%
Slovenia	121.99	198.37	-39%
Belgium	117.24	248.37	-53%
Lithuania	116.3	293.17	-60%
Greece	115.44	219.68	-47%
Ireland**	104.77	124.38	-16%
France	100.07	189.03	-47%
Portugal	93.24	66.4	40%
Cyprus	90.88	127.53	-29%
Luxembourg	77.16	118.85	-35%
Estonia	69.73	163.89	-57%
Croatia	55.54	131.54	-58%
Italy	44.21	88.12	-50%
Austria	41.05	77.69	-47%
Germany	38.69	91.92	-58%
Czechia	33.12	70.6	-53%
Bulgaria	26.5	50.18	-47%
Hungary	24.74	59.59	-58%
Finland	23.12	40.5	-43%
Slovakia	22.36	36.16	-38%
Poland	13.08	42.13	-69%
Romania	9.88	26.02	-62%
Malta	8.83	12.91	-32%

- As of 16th Dec, this daily data is now sourced from Our World In Data (OWID) instead of ECDC as they have switched to weekly reporting (Thursday evenings).
- OWID source their confirmed cases and deaths data from the COVID-19 Data Repository by the Center for Systems Science and Engineering (CSSE) at Johns Hopkins University (JHU). <https://github.com/owid/covid-19-data/tree/master/public/data>
- ****Due to the cyber attack on the HSE's IT systems, daily case numbers from 14 May onwards are based on a data extract from the Covid Care Tracker.**

EU/UK ranked by 7 day percentage change (16th June)

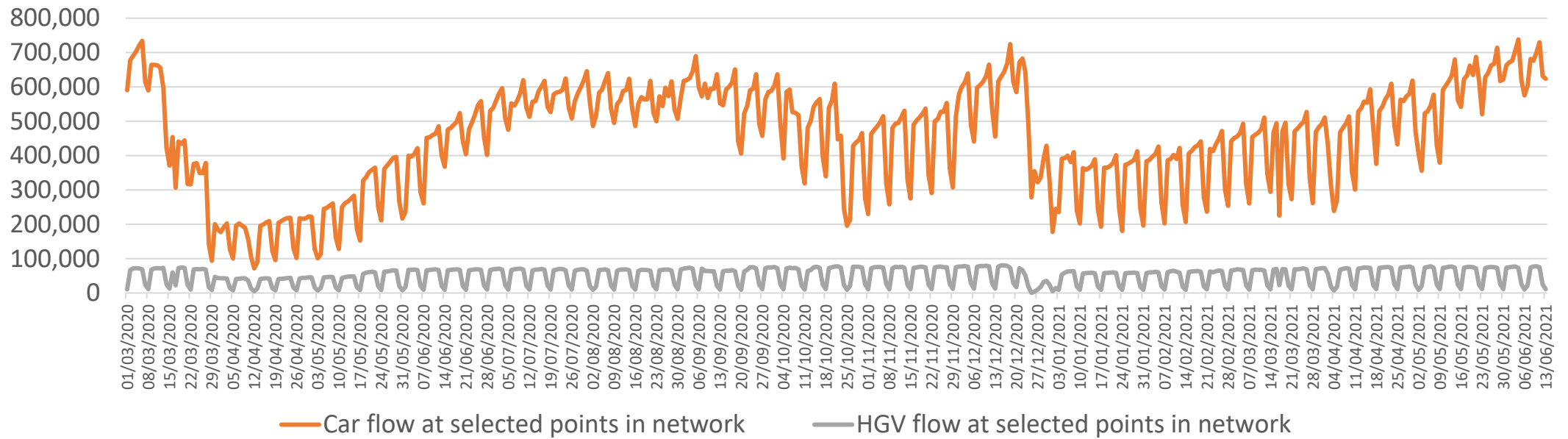
EU and the UK	7 day incidence	Previous 7 day incidence	% change in 7 day incidence
United Kingdom	77.52	56.03	38%
Portugal	53.09	40.15	32%
Spain	73.09	60.42	21%
Cyprus	44.75	46.12	-3%
Slovakia	9.91	12.46	-20%
Ireland**	46.01	58.76	-22%
Bulgaria	11.44	15.05	-24%
Italy	18.92	25.29	-25%
Poland	5.52	7.56	-27%
Finland	9.55	13.57	-30%
Austria	16.95	24.09	-30%
Latvia	58.48	86.2	-32%
Germany	15.2	23.5	-35%
Croatia	21.7	33.83	-36%
Greece	44.72	70.72	-37%
Estonia	26.91	42.82	-37%
Netherlands	51.78	82.92	-38%
Romania	3.77	6.11	-38%
Hungary	9.28	15.47	-40%
Czechia	12.41	20.71	-40%
Lithuania	43.46	72.84	-40%
Denmark	52.21	90.1	-42%
Slovenia	44.69	77.3	-42%
France	36.56	63.52	-42%
Luxembourg	27.96	49.2	-43%
Belgium	42.38	74.86	-43%
Malta	2.26	6.57	-66%
Sweden	38.65	121.39	-68%

- As of 16th Dec, this daily data is now sourced from Our World In Data (OWID) instead of ECDC as they have switched to weekly reporting (Thursday evenings).
- OWID source their confirmed cases and deaths data from the COVID-19 Data Repository by the Center for Systems Science and Engineering (CSSE) at Johns Hopkins University (JHU). <https://github.com/owid/covid-19-data/tree/master/public/data>
- ****Due to the cyber attack on the HSE's IT systems, daily case numbers from 14 May onwards are based on a data extract from the Covid Care Tracker.**

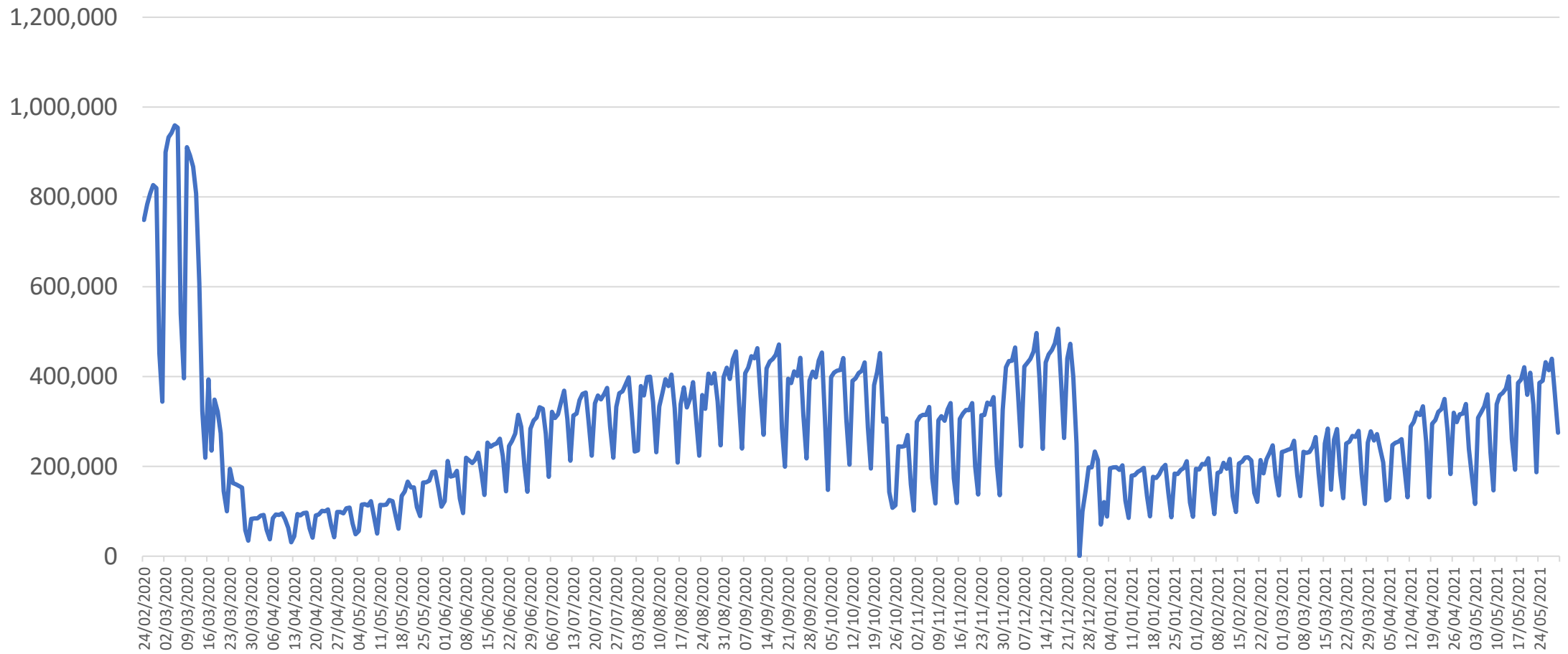


Mobility Data

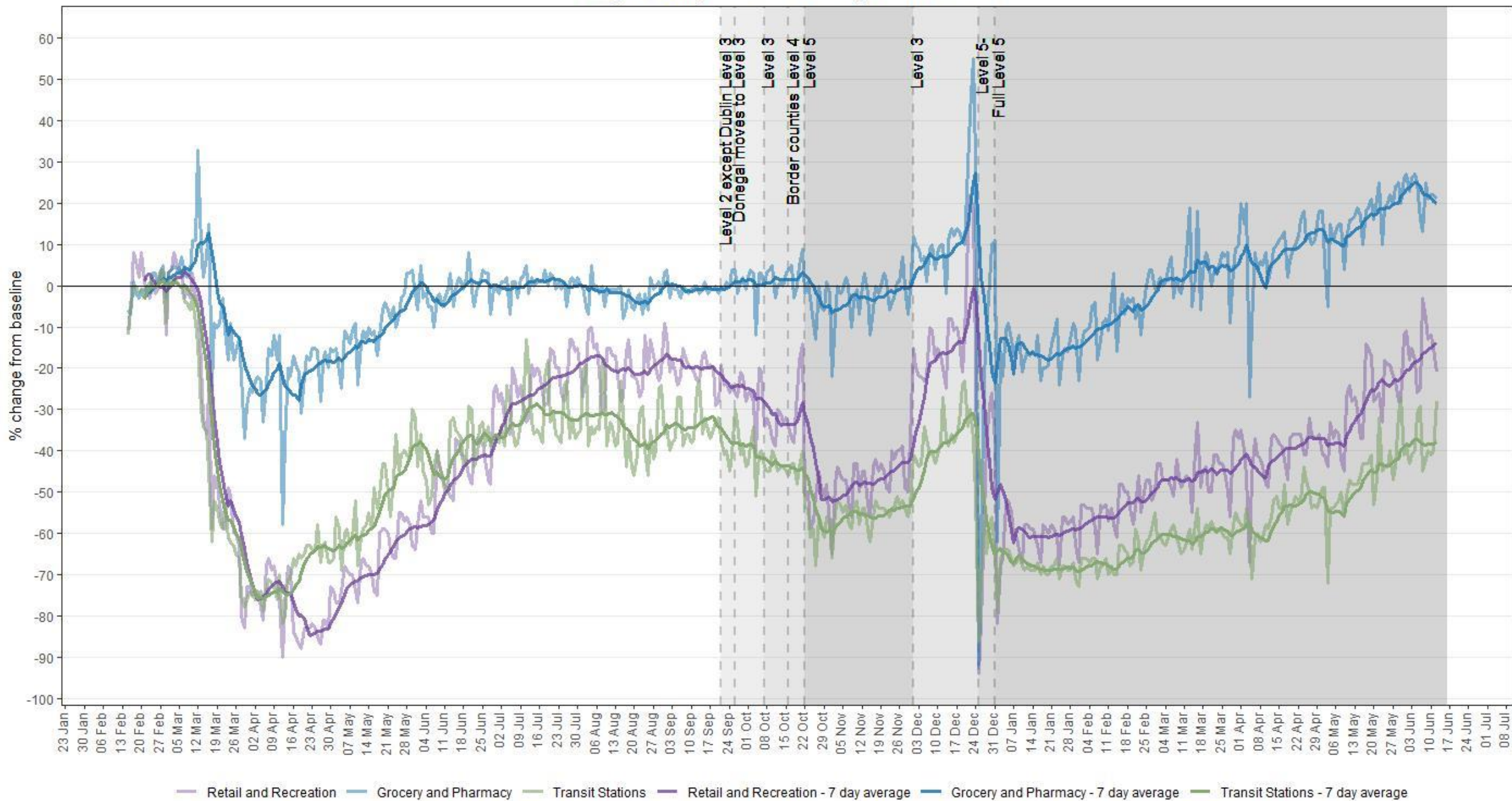
Daily Traffic Flow



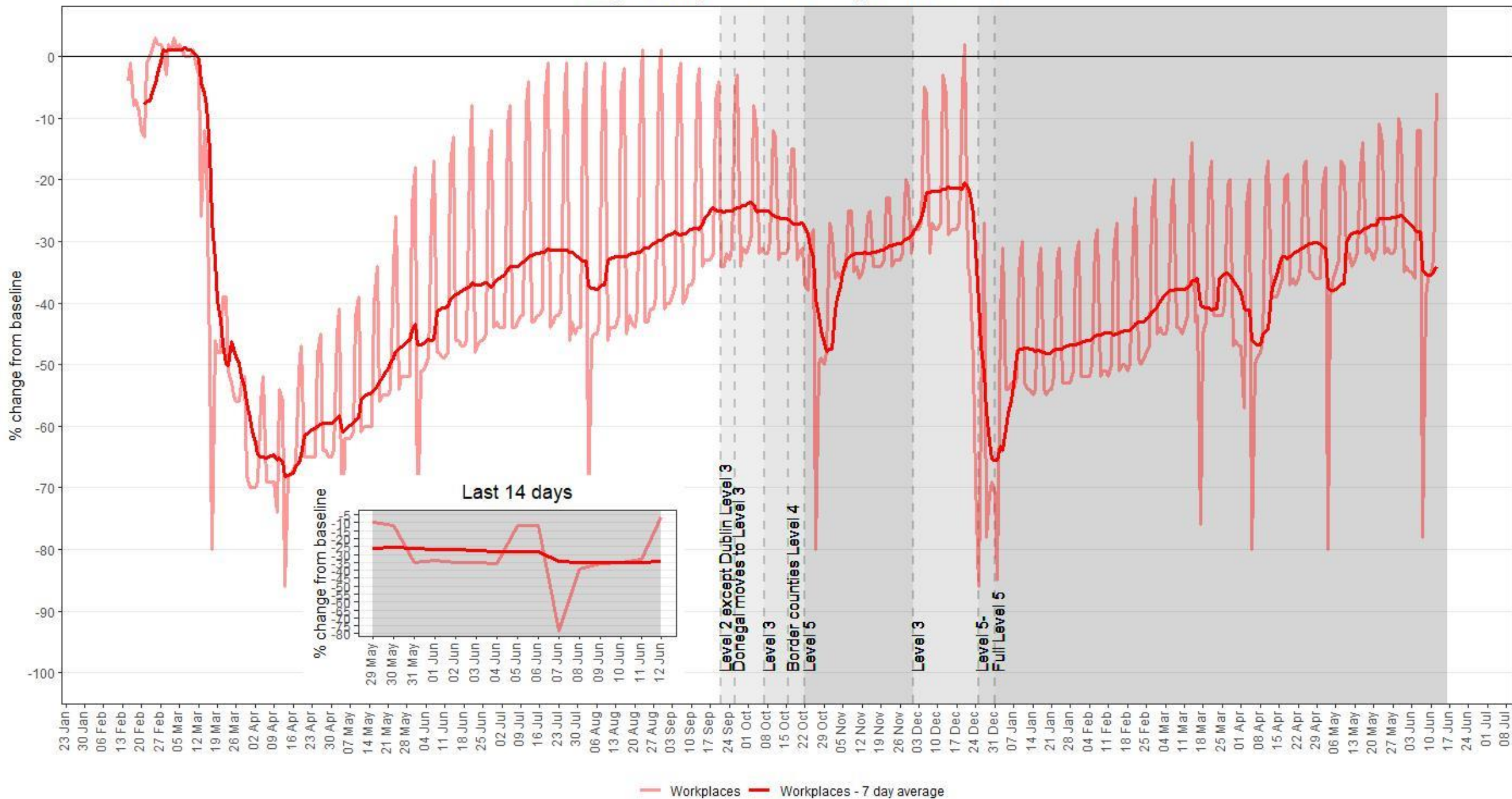
Overall Public Transport daily passengers



Google Mobility Ireland - % change from baseline



Google Mobility Ireland - % change from baseline



Apple Mobility Ireland - % change from baseline

