



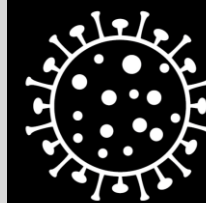
An Roinn Sláinte  
Department of Health

# NPHET COVID Update

26<sup>th</sup> May 2021

# Cases, numbers in hospital and intensive care

Daily case numbers and the numbers of people in hospital and ICU remain stable.



Coronavirus  
**COVID-19**  
Public Health  
Advice

	Apr 2020	Summer 2020	Oct 2020	Dec 2020	Jan 2021	29 Apr	6 May	13 May	20 May	25 May	Daily count 25 May
Cases confirmed per day	859 18-04	8.7 25-06	1158 21-10	262 12-12	6520 10-01	433	452	431	417	432	365
14-day incidence <i>per 100,000 population</i>	212 19-04	3.0 04-07	306 26-10	79 09-12	1532 15-01	125	130	129	125	128*	
Hospital in-patients	862 17-04	9 02-08	333 01-11	198 16-12	1949 24-01	164	133	116	104	110	103
<i>Hospital admissions per day</i>	85 04-04	<1 10-07	27 26-10	11 13-12	158 15-01	14	10	13	11	13	10
ICU confirmed cases	150 14-04	4 04-08	43 04-11	26 27-12	217 28-01	46	40	33	40	41	41
<i>ICU admissions per day</i>	14 31-03	<1 03-06	4 03-11	1 16-12	20 17-01	2	1	1	2	2	1
Deaths confirmed per day	46 22-04	<1 30-07	7 01-12	4 17-12	57 03-02	5	4	3	-	-	-

Data are 7-day averages (the indicated day and the preceding 6 days, rounded to the nearest whole number) with the exception of 14 day cumulative incidence, which is the total number of cases in the preceding 14 days per 100,000 population. The highest and lowest values of each indicator are given for each wave of the pandemic, along with the date on which that value was recorded, as well as the data for recent weeks. The historic incidence data may change due to denotification of cases. Case data from 13 May 2021 onward are estimates based on the number of positive tests reported.

\*based on 14-day provisional CCT report from HPSC



Rialtas na hÉireann  
Government of Ireland



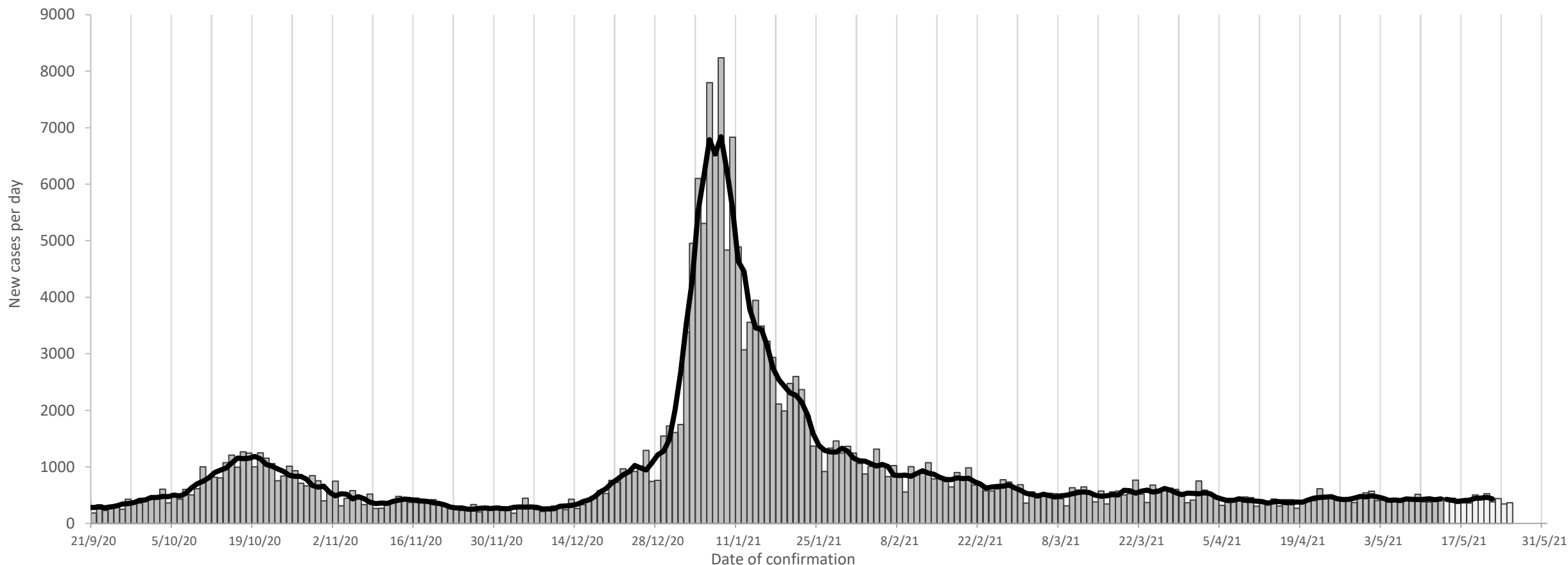
# Cases, Incidence Rates & Testing

# Confirmed cases each day

Daily and weekly count and 5-day rolling average. The 5-day average peaked at 1186 on 21 October, reached a low of 251 on 28 November, peaked again at 6847 on 8 January, and is now **421**. **3033** cases were provisionally notified last week, compared with 2890 the week before.



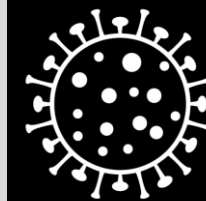
Cases per week	2059	3031	4457	7398	7073	4838	3424	2583	2580	1798	2028	1964	3368	6597	15722	45616	25112	14806	8921	7143	6026	5525	4547	3629	3535	3837	3979	3615	2796	2589	3114	3210	2987	2890	3033
----------------	------	------	------	------	------	------	------	------	------	------	------	------	------	------	-------	-------	-------	-------	------	------	------	------	------	------	------	------	------	------	------	------	------	------	------	------	------



Daily count (bars) 5-day average (line) and weekly counts of the number of laboratory confirmed new cases by date on which they were confirmed by HPSC. Case counts may change due to denotification of cases. Weekly case counts are by notification (event) date and standard epidemiological week. Case data from 13 May 2021 onward (light grey) are estimates based on the number of positive tests reported.

# Confirmed cases each day

Case counts have remained stable over the last five weeks.



Coronavirus  
**COVID-19**  
Public Health  
Advice

Cases per  
week

5525

4547

3629

3535

3837

3979

3615

2796

2589

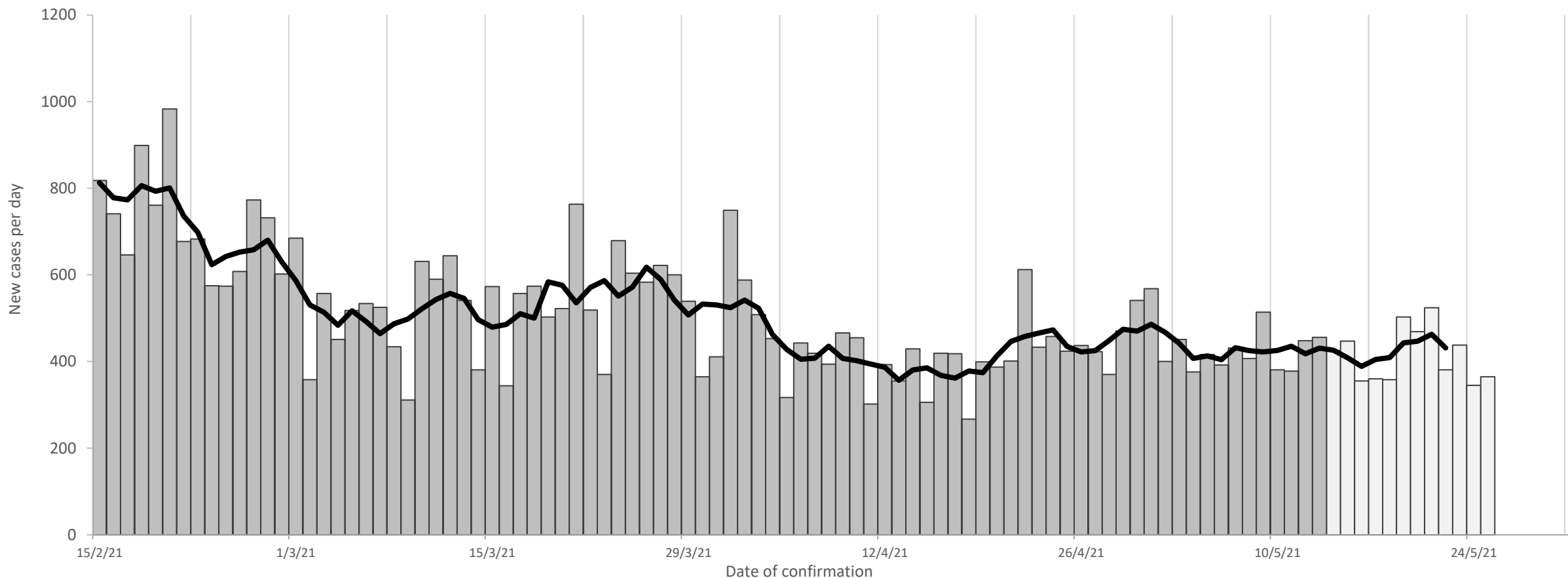
3114

3210

2987

2890

3033



Daily count (bars) 5-day average (line) and weekly counts of the number of laboratory confirmed new cases by date on which they were confirmed by HPSC. Case counts may change due to denotification of cases. Weekly case counts are by notification (event) date and standard epidemiological week. Case data from 13 May 2021 onward (light grey) are estimates based on the number of positive tests reported.



Rialtas na hÉireann  
Government of Ireland

## Age profile of cases

### Latest 14 day (HPSC 14-day provisional report CCT)

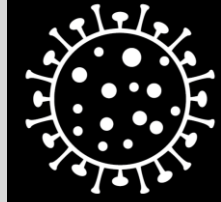
Mean age 29.5  
Median age 27  
Pct<45 78.8 %  
Pct> 65 2.7 %

### 13<sup>th</sup> May – HPSC 14-day CIDR report

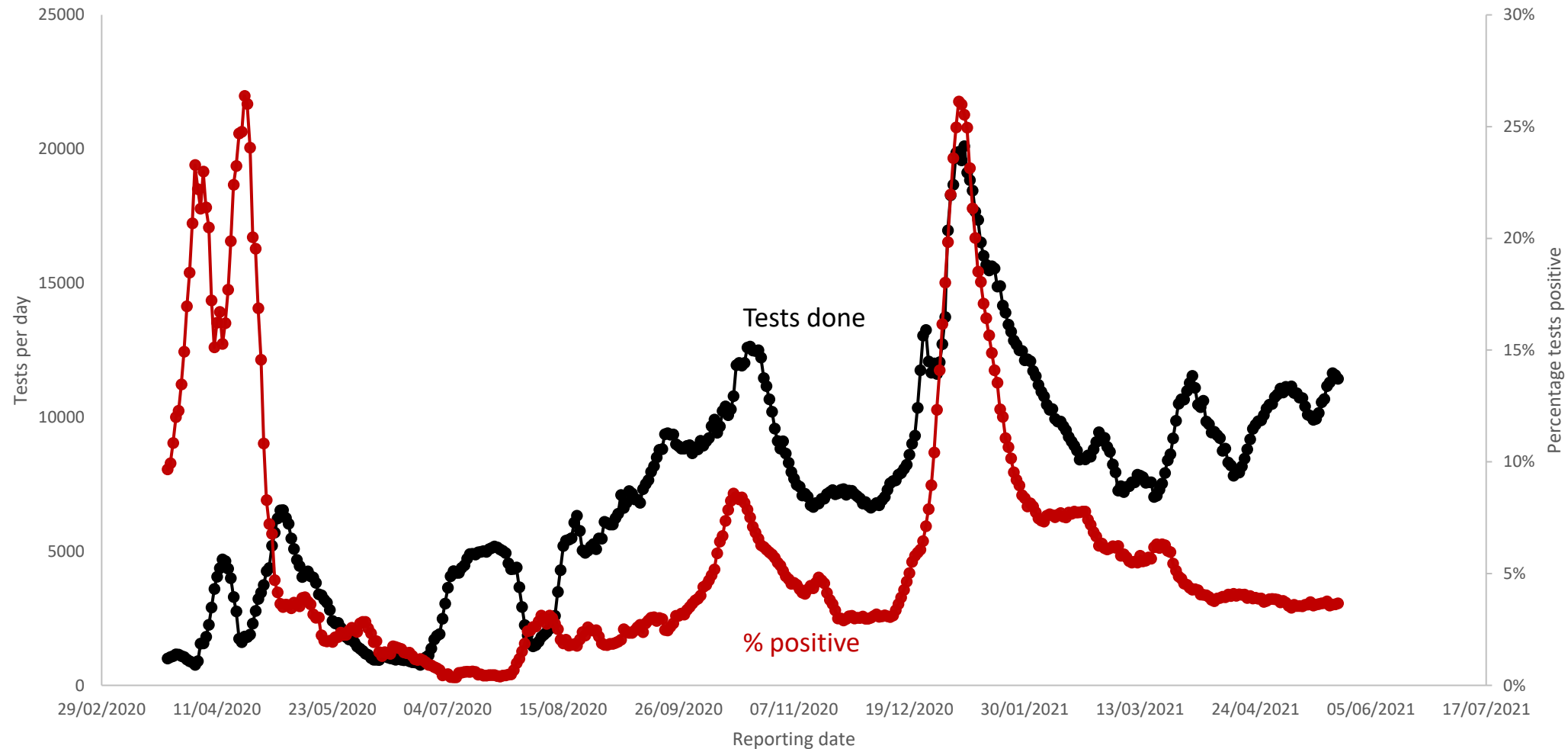
Mean age 30  
Median age 29  
Pct<45 78%  
Pct> 65 3.3%

# Daily test positivity: public health laboratories

The daily average number of tests done and positivity rates for public health laboratories show the recent increases in demand for testing with a reduction or no change in positivity rate. Positivity rates in public health laboratories have been stable at less than 4% since early April



Coronavirus  
**COVID-19**  
Public Health  
Advice



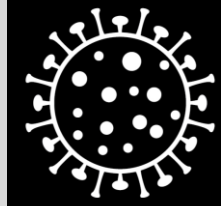
Daily tests done (black) and percentage of tests reported positive (red) per day from NVRL and associated laboratories, plus Cherry Orchard. Data are 7-day moving averages.



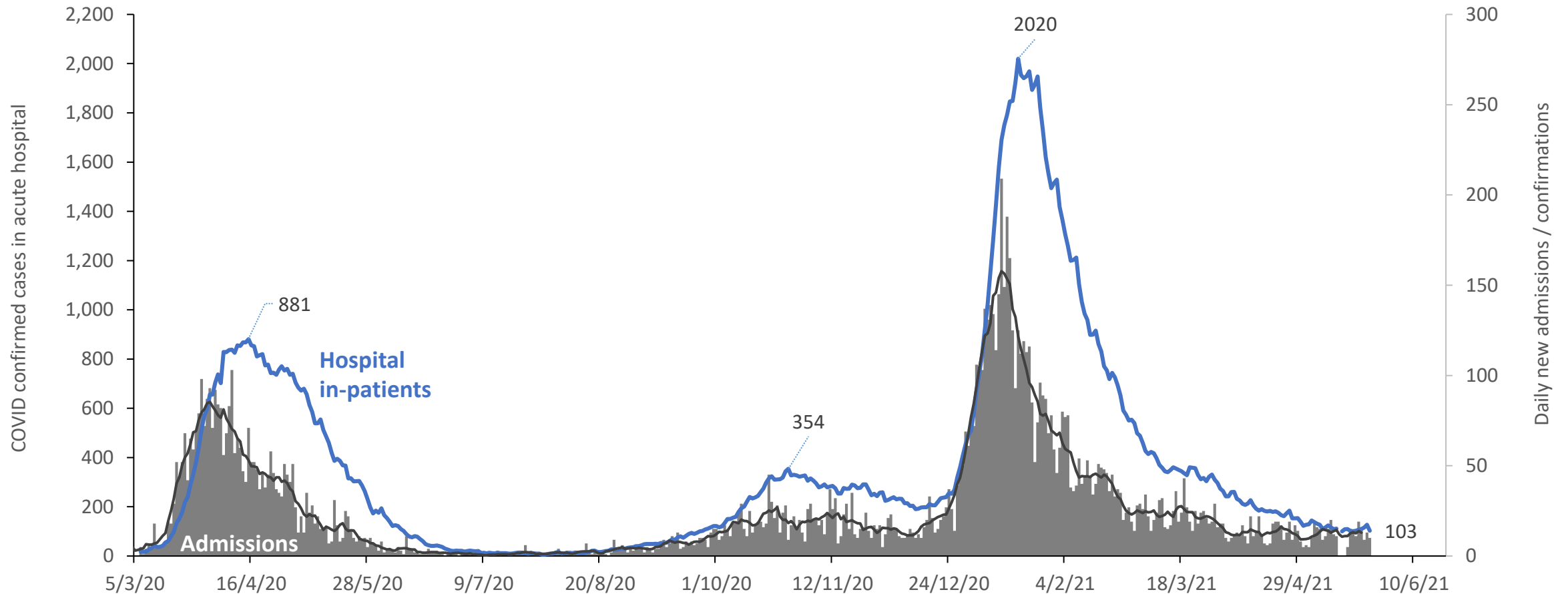
Rialtas na hÉireann  
Government of Ireland

# Confirmed cases in acute hospitals

The number of people in hospital with confirmed SARS-CoV-2 infection. The number of people in hospital is stable at **103**, a level not seen since early September 2020. The number of admissions and newly confirmed cases in hospital per day is stable at 10-15 per day.



Coronavirus  
**COVID-19**  
Public Health  
Advice



Hospital in-patients: Daily count of number of COVID-19 confirmed cases in acute hospitals. Admissions: New COVID-19 confirmed admissions and new laboratory confirmations of suspected cases in preceding 24 hours (7-day moving average also shown). Data from HSE PMIU-SDU, 8am census.

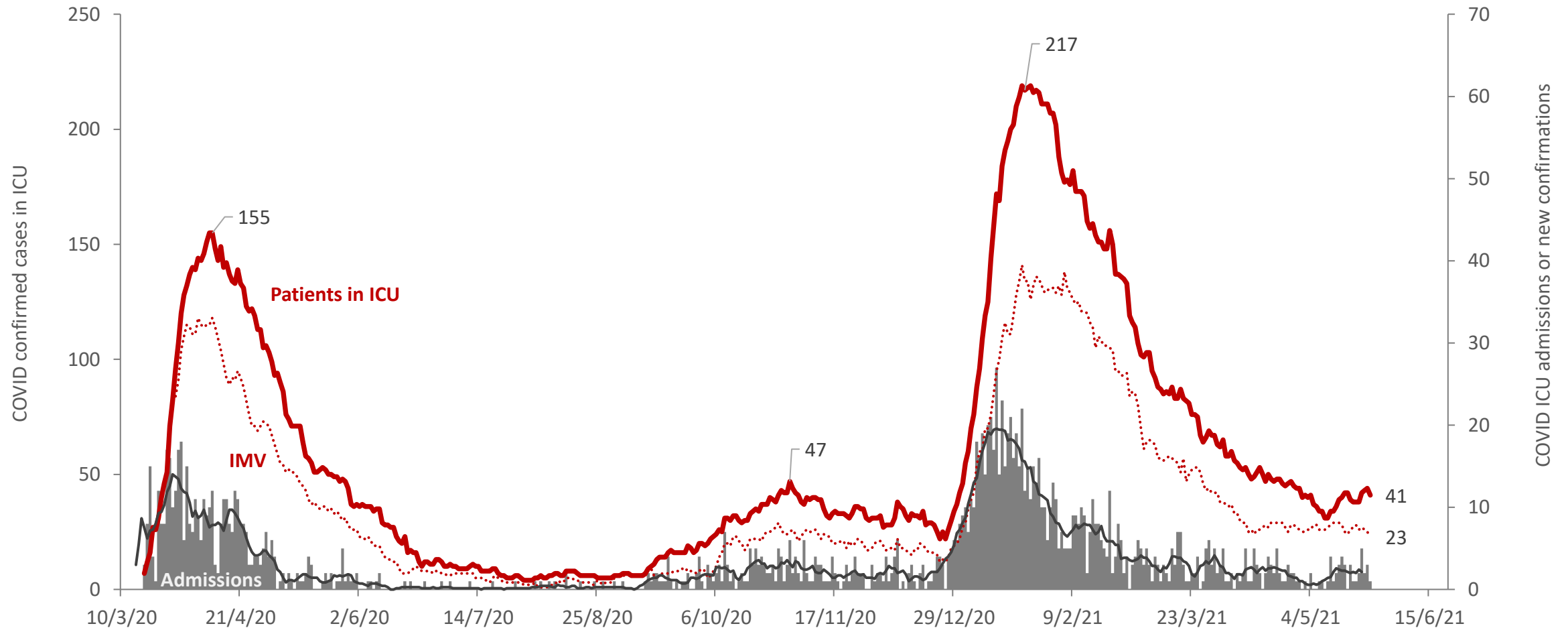


Rialtas na hÉireann  
Government of Ireland



# Confirmed cases in intensive care

The number of people in ICU with confirmed SARS-CoV-2 infection has increased slightly, but the number requiring mechanical ventilation has fallen. The number of new admissions per day is low, on average 2 per day.



Patients in ICU: Daily count of number of COVID-19 confirmed cases in ICU. IMV: Daily count of number of COVID-19 patients requiring invasive mechanical ventilation. Admissions: daily new COVID-19 confirmed admissions to ICU and new laboratory confirmations of suspected cases in ICU (7-day average also shown). Data from morning census from NOCA

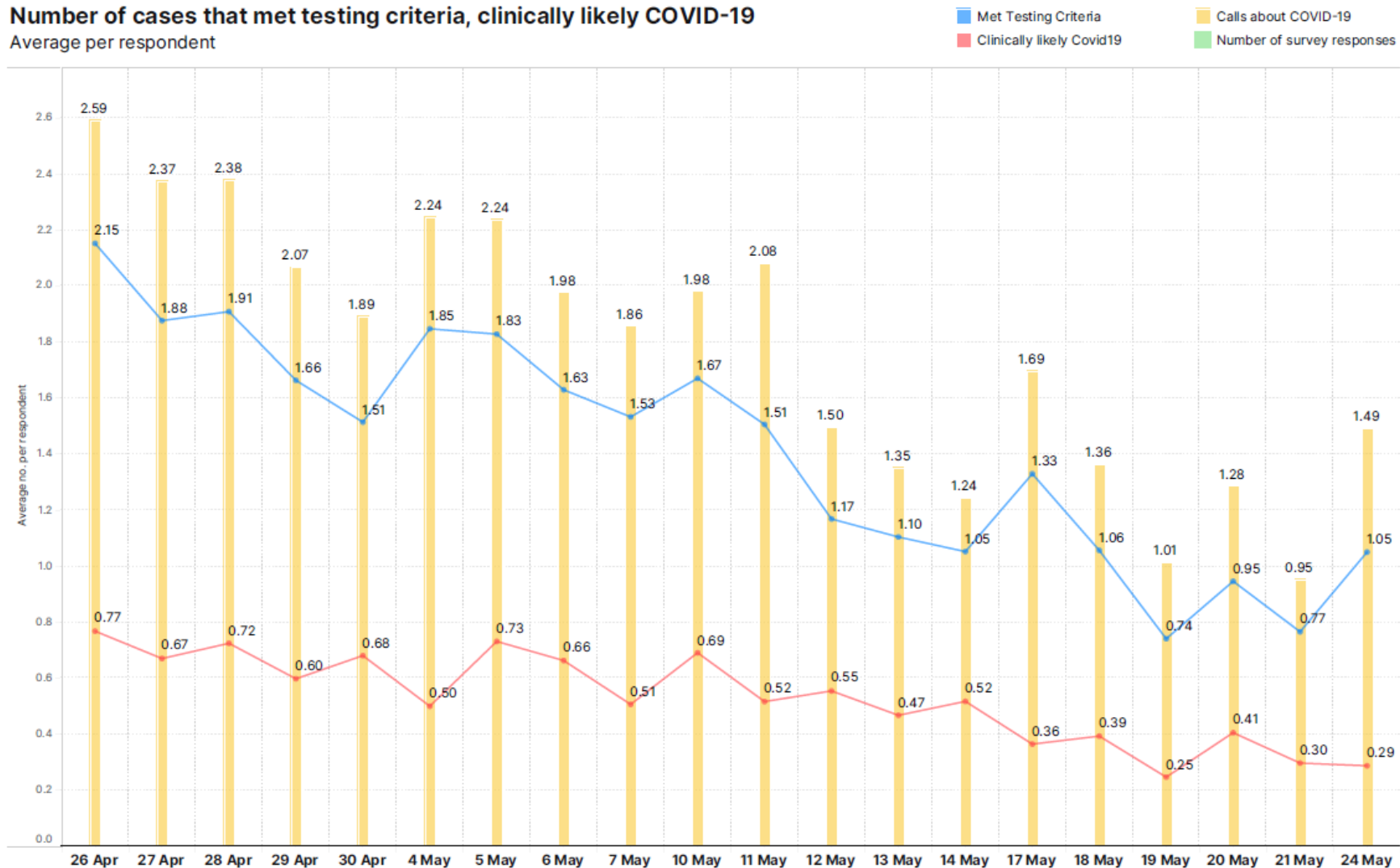


# GP referrals



## Number of cases that met testing criteria, clinically likely COVID-19

Average per respondent





# Outbreaks & Clusters



### Key Points (Week 20 2021):

- Aggregate data on 142 outbreaks were reported to HPSC by regional Departments of Public Health for week 20 2021
- No new nursing home, community hospital/long-stay units or acute hospital outbreaks were reported
- Two residential institution outbreaks were reported, both in Direct Provision Centres
- 59 outbreaks associated with schools were reported but it was not possible to determine the total number of cases involved in these outbreaks
- 36 workplace outbreaks were reported; 3 in the food production and processing sector and 4 in the construction sector
- Four outbreaks involving vulnerable groups/key populations were reported; one among Irish Travellers and three associated with third level settings/students.

As result of the current disruptions to the HSE IT systems, the Computerised Infectious Diseases Reporting System (CIDR) is not available for statutory notification of infectious diseases, including COVID-19. Public Health and surveillance staff in regional Departments of Public Health are manually collecting and collating data on COVID-19 outbreaks/clusters and providing this information to HPSC on a daily and weekly basis.

This report provides information on COVID-19 outbreaks/clusters notified to regional Departments of Public Health during epidemiological week 20 2021 (week ending May 22<sup>nd</sup>) and reported to HPSC as an aggregate summary of the weekly data. Please note, there may be limitations to the available data and family outbreaks are not included in this report due to the high volume of these outbreak types. Data are provisional and subject to ongoing review, validation and updating.



# Test & Trace Update

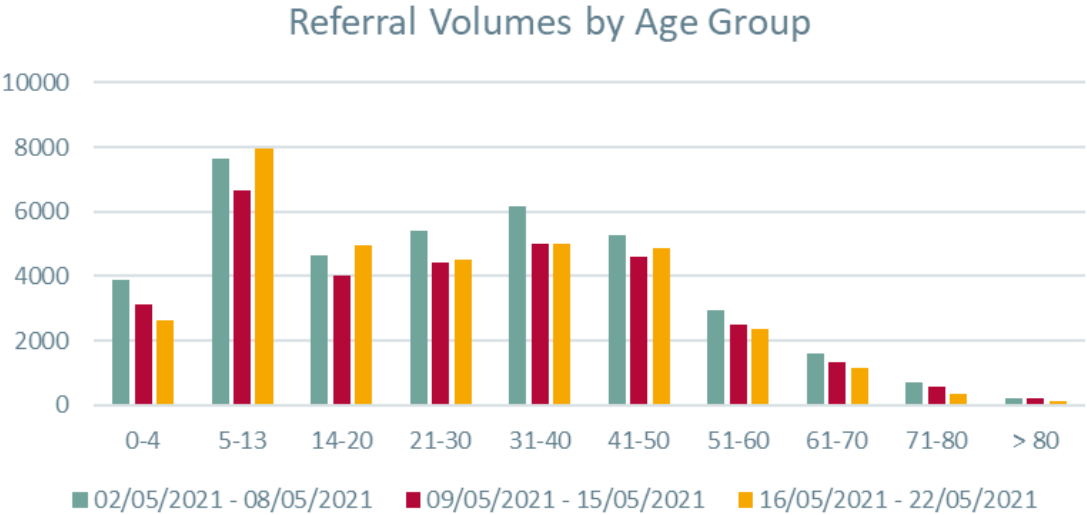
# Testing/sampling and contact tracing NPHET update



## Community test referrals

From the 18<sup>th</sup> – 24<sup>th</sup> May there were c.65,841 community referrals. This weekly total has increased by c.32% since the same time-period the previous week (11<sup>th</sup> – 17<sup>th</sup> May; c.49,787 total referrals).

From the 16<sup>th</sup> – 22<sup>nd</sup> May, the group with the largest number of referrals is the 5-13 age group, which makes up 23.5% of all referrals. The detected rate for the 5-13 age group is c.3.9%.



Note: As a result of the current climate and the limited access to HSE data, several data points within the HSE test and trace paper could not be updated. Included in the paper are the most recent available figures. Where data have been affected by the recent outages, this will be accounted for retrospectively in future reports.

\*Figure above highlights the breakdown of community referrals by age group, from 16<sup>th</sup> – 22<sup>nd</sup> May. This dataset reflects an earlier 7-day date range, as it refers to referrals that have been resulted (i.e., detected, not detected, inconclusive, indeterminate, invalid and not tested).

## Testing/sampling and contact tracing NPHET update



### *Sampling in the community, serial testing and acute and private settings.*

From 18<sup>th</sup> – 24<sup>th</sup> May a total of 87,841 swabs were completed in the community and in serial testing sites. This is an 8.6% increase in comparison to the same time period last week (11<sup>th</sup> -17<sup>th</sup> May; 80,906 total swabs completed in the community and serial testing sites).

This overall figure is not reflective of all testing completed from 18<sup>th</sup> – 24<sup>th</sup> of May. Due to the current climate, the HSE does not have sight of the total swabs completed in acute and private settings. This information will be retrospectively reported once available.

### ***Laboratory Testing***

Over the seven-day period 18<sup>th</sup> – 24<sup>th</sup> May, there has been approximately 104,491 laboratory tests completed (Excludes Acutes).



## CMP close contact update (17<sup>th</sup> – 23<sup>rd</sup> May)



- The number of close contacts reported during the week ending 23<sup>rd</sup> May was 10,281, an 11% decrease on the previous week (9,239).
- In total, 97% of these close contacts have been contacted.
- The number of complex contact episodes identified during the week ending 23<sup>rd</sup> May was 1,479, a 4% increase from the week ending 16<sup>th</sup> May (1,423).

**Source: HSE – COVID-19 Contact Management Programme Weekly report**

***Note: The recent cyber attack on the HSE on 14<sup>th</sup> May 2021 caused significant disruptions to HSE IT infrastructure, including the systems enabling contact tracing. As a result, limited data are presented in the CMP report for the week of the 17<sup>th</sup> to 23<sup>rd</sup> May. The number of cases reported via the CovidCare Tracker and the associated number of close contacts may be underestimated due to disturbances to laboratory information systems and standard contact tracing process.***

# Variants update



## **Total confirmed variants of concern cases:**

- P1 (first identified in Brazil): 28
- B.1.351 (first identified in South Africa): 72
- B.1.617.2 (first identified in India): 97
- B.1.617.1 (first identified in India): 58

## **Total of other confirmed variants of note/under investigation cases:**

- B.1.525 (first identified in Nigeria): 54
- B.1.526 (first identified in New York): 11
- P.2 (first identified in Brazil): 15
- B.1.1.7 with E484K mutation: 2
- B.1.429 (first identified in California): 7
- B.1.1.318 (first identified in UK): 181

*(Based on NVRL and Eurofins-Biomnis results up to 26<sup>th</sup> May 2021)*

# Situation analysis 25 May 2021



- Incidence remains stable
  - Cases (5-day average) 421 cases per day; 14-day incidence estimated at 128 per 100,000
  - 3033 cases were provisionally reported last week, compared with 2890 the week before
  - Test positivity stable
- Numbers in hospital and ICU stable
  - Small increase in numbers in ICU, but number requiring IMV decreasing
- Population mobility has continued to increase
- A broadly positive outlook, but we remain vulnerable in the coming weeks as the wider population is not yet protected by vaccination
  - The situation remains uncertain
  - Outdoors is lower risk, but we still need to take the basic precautions
  - We need to keep close contacts low, and minimize the risk of transmission during any close contact



# European Data

## EU/UK ranked by 14 day incidence (24<sup>th</sup> May)

EU and the UK	14 day incidence	Previous 14 day incidence	% change in 14 day incidence
Sweden	500.5	687.7	-27%
Lithuania	459.4	615.3	-25%
Netherlands	369.7	585.4	-37%
Latvia	359.4	464.7	-23%
France	281.0	409.3	-31%
Belgium	275.6	360.6	-24%
Slovenia	266.6	433.5	-39%
Greece	261.7	282.7	-7%
Cyprus	251.5	770.4	-67%
Estonia	251.2	373.8	-33%
Denmark	249.5	201.4	24%
Croatia	226.9	528.9	-57%
Luxembourg	178.0	328.6	-46%
Germany	145.4	269.2	-46%
Spain	141.4	198.8	-29%
Italy	129.6	240.1	-46%
<b>Ireland**</b>	<b>123.7</b>	<b>129.6</b>	<b>-5%</b>
Czechia	118.1	235.7	-50%
Austria	109.3	237.1	-54%
Hungary	103.1	216.7	-52%
Poland	82.2	192.3	-57%
Bulgaria	78.4	173.0	-55%
Slovakia	56.2	105.8	-47%
Portugal	56.2	50.0	12%
Finland	49.7	52.9	-6%
Romania	47.0	99.9	-53%
United Kingdom	41.0	44.8	-9%
Malta	10.9	60.9	-82%

- As of 16<sup>th</sup> Dec, this daily data is now sourced from Our World In Data (OWID) instead of ECDC as they have switched to weekly reporting (Thursday evenings).
- OWID source their confirmed cases and deaths data from the COVID-19 Data Repository by the Center for Systems Science and Engineering (CSSE) at Johns Hopkins University (JHU). <https://github.com/owid/covid-19-data/tree/master/public/data>
- **\*\*Due to the cyber attack on the HSE's IT systems, data on daily case numbers from 14 May onwards is an estimation. This is based on the number of positive lab results, adjusted to account for an estimated proportion of duplicates. Data on positive lab results from hospital laboratories may be limited. Ireland's incidence is based on these estimated case numbers.**

## EU/UK ranked by 14 day percentage change (24<sup>th</sup> May)

EU and the UK	14 day incidence	Previous 14 day incidence	% change in 14 day incidence
Denmark	249.5	201.4	24%
Portugal	56.2	50.0	12%
<b>Ireland**</b>	<b>123.7</b>	<b>129.6</b>	<b>-5%</b>
Finland	49.7	52.9	-6%
Greece	261.7	282.7	-7%
United Kingdom	41.0	44.8	-9%
Latvia	359.4	464.7	-23%
Belgium	275.6	360.6	-24%
Lithuania	459.4	615.3	-25%
Sweden	500.5	687.7	-27%
Spain	141.4	198.8	-29%
France	281.0	409.3	-31%
Estonia	251.2	373.8	-33%
Netherlands	369.7	585.4	-37%
Slovenia	266.6	433.5	-39%
Luxembourg	178.0	328.6	-46%
Italy	129.6	240.1	-46%
Germany	145.4	269.2	-46%
Slovakia	56.2	105.8	-47%
Czechia	118.1	235.7	-50%
Hungary	103.1	216.7	-52%
Romania	47.0	99.9	-53%
Austria	109.3	237.1	-54%
Bulgaria	78.4	173.0	-55%
Croatia	226.9	528.9	-57%
Poland	82.2	192.3	-57%
Cyprus	251.5	770.4	-67%
Malta	10.9	60.9	-82%

- As of 16<sup>th</sup> Dec, this daily data is now sourced from Our World In Data (OWID) instead of ECDC as they have switched to weekly reporting (Thursday evenings).
- OWID source their confirmed cases and deaths data from the COVID-19 Data Repository by the Center for Systems Science and Engineering (CSSE) at Johns Hopkins University (JHU). <https://github.com/owid/covid-19-data/tree/master/public/data>
- **\*\*Due to the cyber attack on the HSE's IT systems, data on daily case numbers from 14 May onwards is an estimation. This is based on the number of positive lab results, adjusted to account for an estimated proportion of duplicates. Data on positive lab results from hospital laboratories may be limited. Ireland's incidence is based on these estimated case numbers.**

## EU/UK ranked by 7 day percentage change (24<sup>th</sup> May)

EU and the UK	7 day incidence	Previous 7 day incidence	% change in 7 day incidence
Portugal	30.3	25.9	17%
Belgium	146.1	129.6	13%
<b>Ireland**</b>	<b>63.4</b>	<b>60.3</b>	<b>5%</b>
Finland	24.7	25.0	-1%
Denmark	122.6	127.0	-3%
Spain	67.7	73.7	-8%
France	131.8	149.2	-12%
Greece	121.8	139.9	-13%
Malta	5.0	5.9	-15%
Netherlands	164.0	205.8	-20%
Estonia	110.3	140.9	-22%
United Kingdom	17.9	23.0	-22%
Latvia	156.6	202.7	-23%
Germany	61.7	83.7	-26%
Slovenia	113.0	153.6	-26%
Austria	46.3	63.0	-27%
Sweden	210.1	290.5	-28%
Italy	53.1	76.6	-31%
Lithuania	186.1	273.3	-32%
Czechia	46.6	71.4	-35%
Slovakia	21.9	34.3	-36%
Romania	18.1	28.9	-37%
Croatia	86.6	140.3	-38%
Hungary	39.1	64.1	-39%
Poland	29.0	53.1	-45%
Bulgaria	26.7	51.7	-48%
Luxembourg	56.7	121.3	-53%
Cyprus	77.6	173.9	-55%

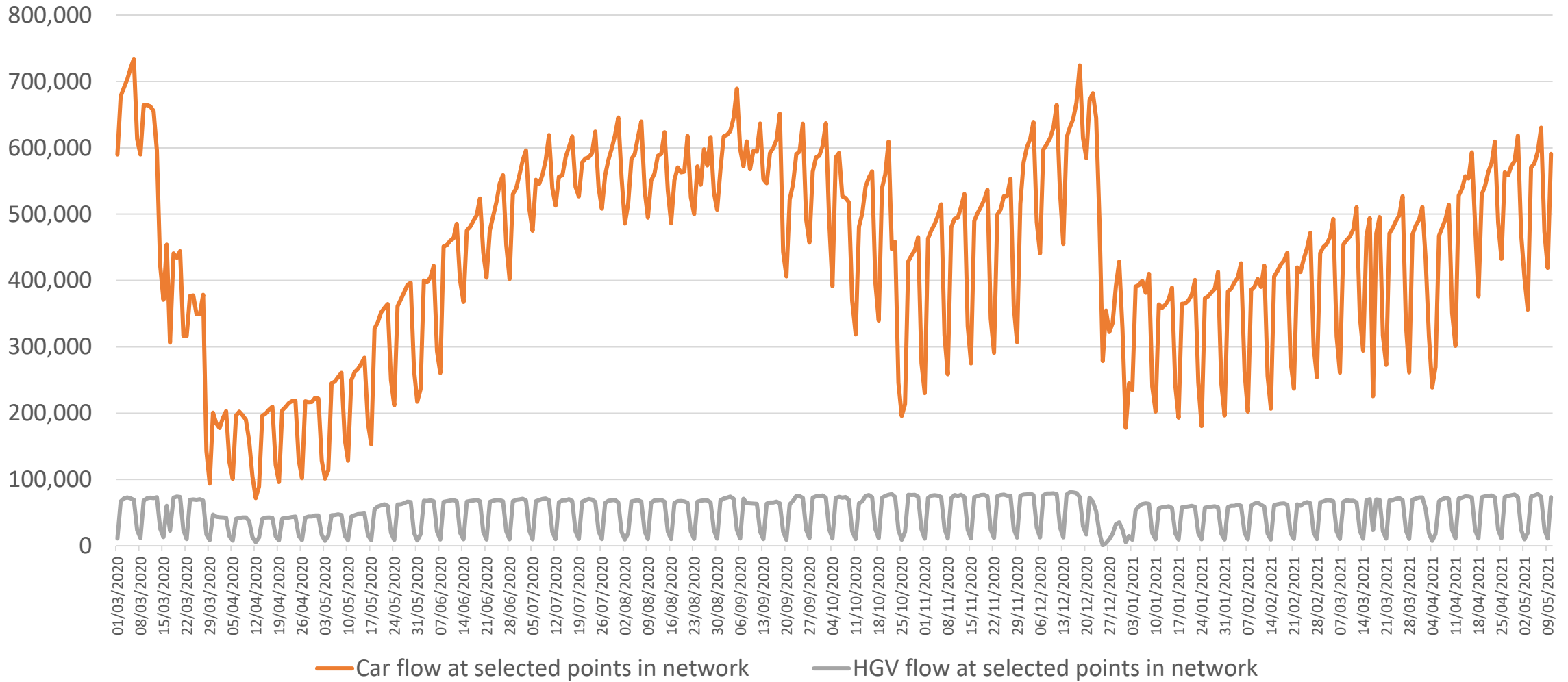
- As of 16<sup>th</sup> Dec, this daily data is now sourced from Our World In Data (OWID) instead of ECDC as they have switched to weekly reporting (Thursday evenings).
- OWID source their confirmed cases and deaths data from the COVID-19 Data Repository by the Center for Systems Science and Engineering (CSSE) at Johns Hopkins University (JHU). <https://github.com/owid/covid-19-data/tree/master/public/data>
- **\*\*Due to the cyber attack on the HSE's IT systems, data on daily case numbers from 14 May onwards is an estimation. This is based on the number of positive lab results, adjusted to account for an estimated proportion of duplicates. Data on positive lab results from hospital laboratories may be limited. Ireland's incidence is based on these estimated case numbers.**



# Compliance Data

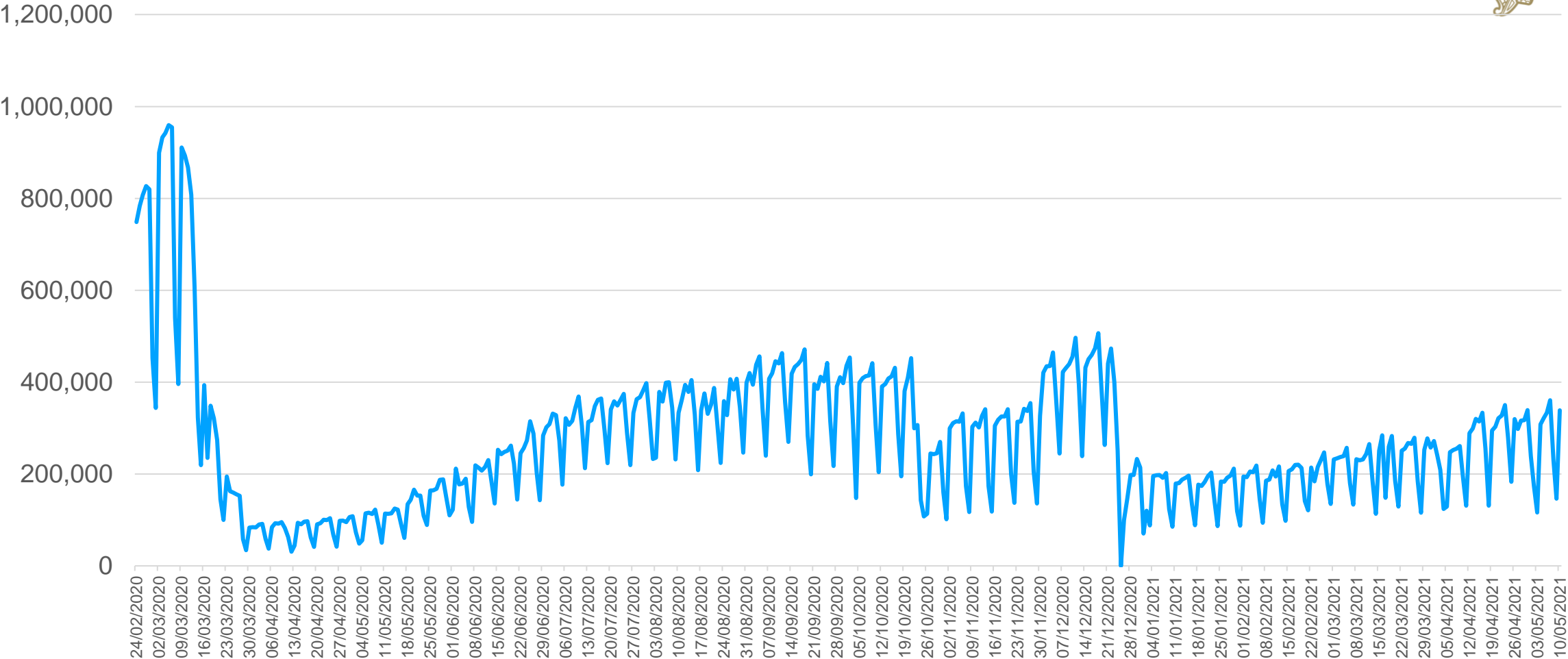


Daily Traffic Flow

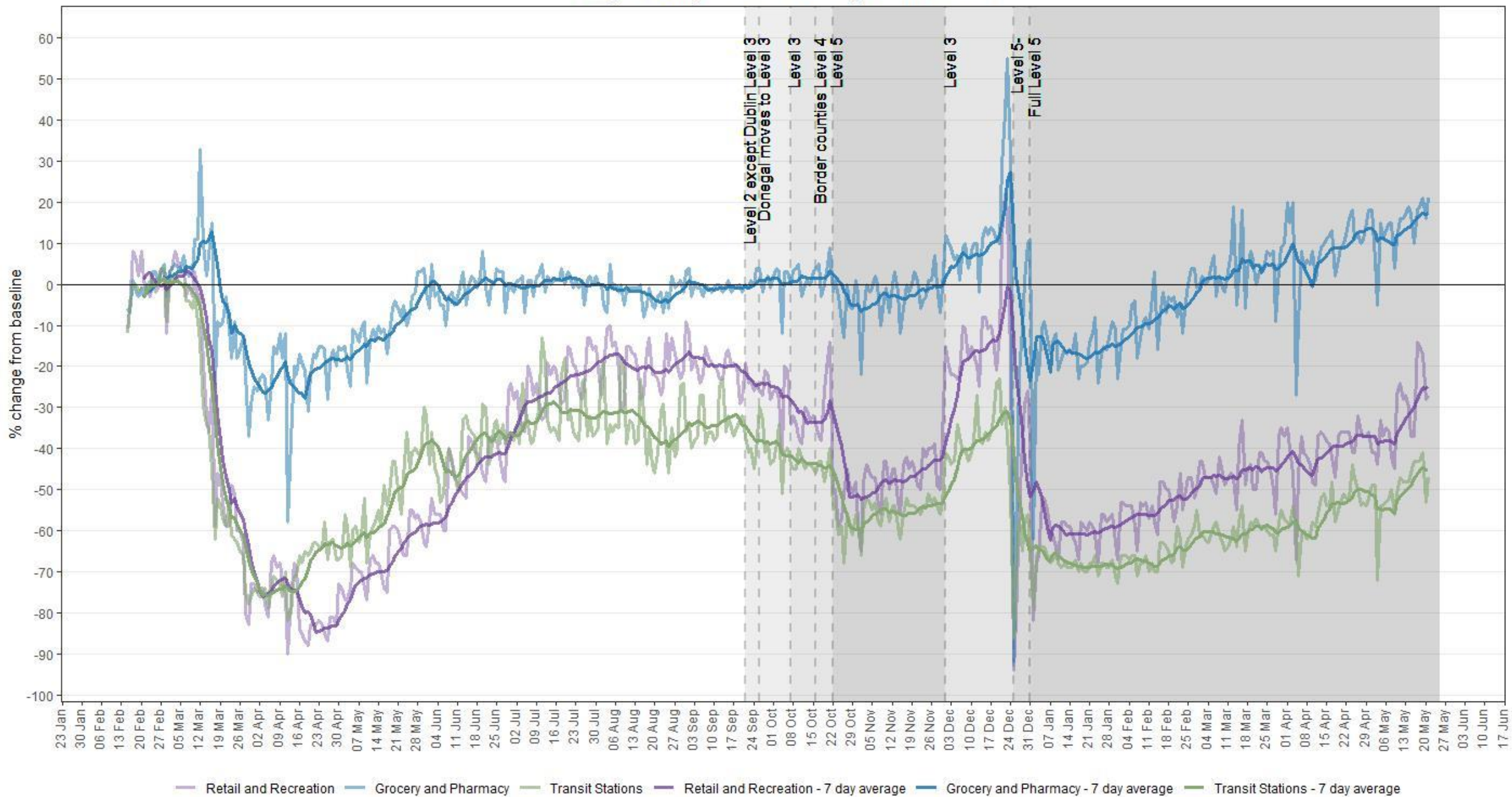




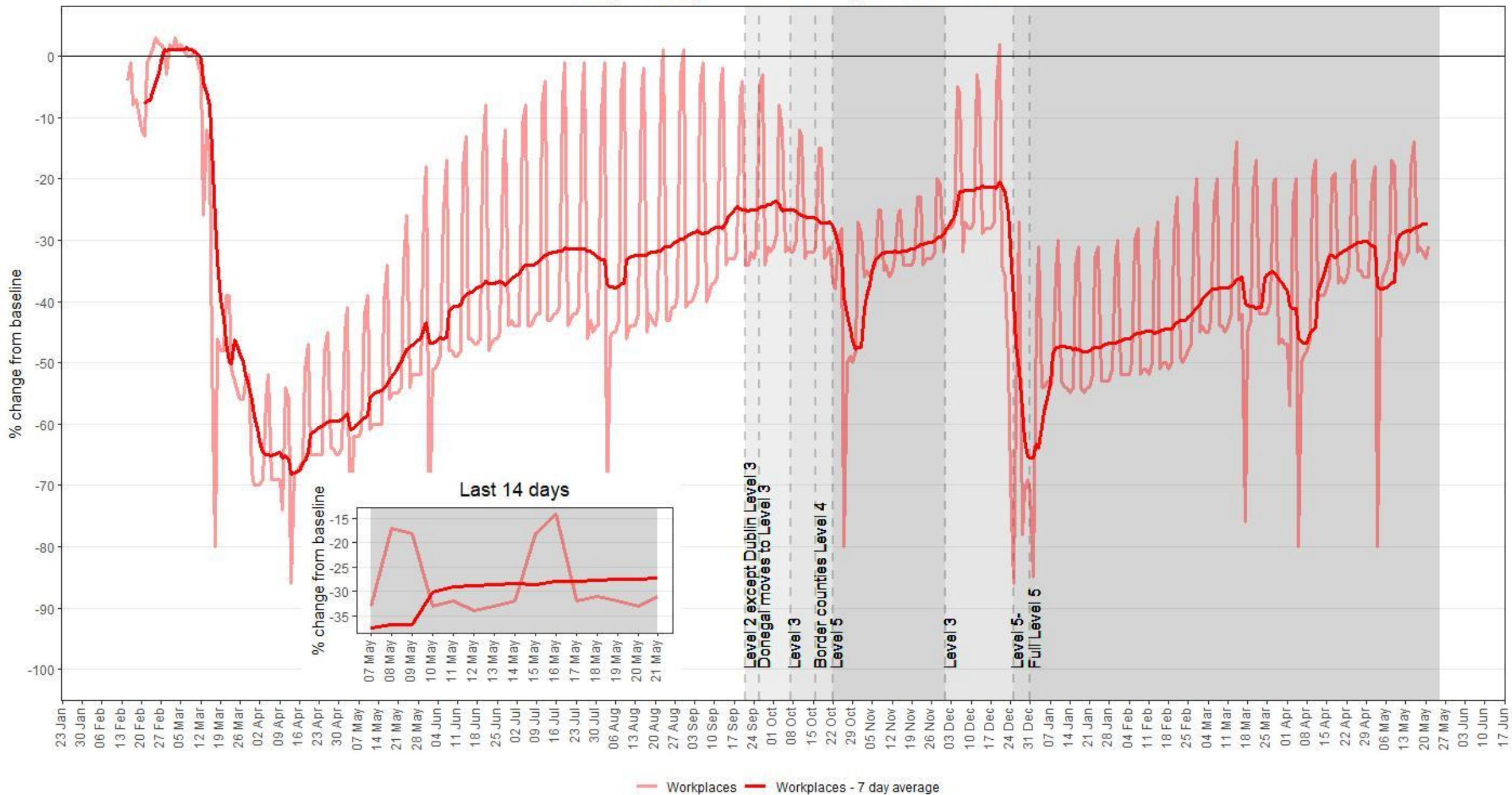
# Overall Public Transport daily passengers



Google Mobility Ireland - % change from baseline



# Google Mobility Ireland - % change from baseline





Apple Mobility Ireland - % change from baseline

