



An Roinn Sláinte  
Department of Health

# NPHET COVID Update

## 8<sup>th</sup> April 2021

# Current situation



	01-Oct	26-Oct (2 <sup>nd</sup> wave peak 14 day inc.)	01-Dec	01-Jan	14-Jan (3 <sup>rd</sup> wave peak 14 day inc.)	26-Mar	30-Mar	03-Apr	07-Apr
14-day incidence	96.08	306.20	86.90	320.63	1494.56	158.05	164.03	166.24	151.62
5-day average cases	407.0	919.4	261.0	1477.0	4459.4	552.0	542.6	525.8	429.6
Total weekly cases	2607	7000	1893	9419	35371	4046	3998	3769	3491

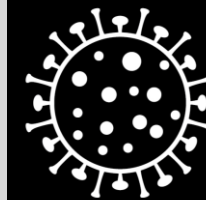
	01-Oct	26-Oct (2 <sup>nd</sup> wave peak 14 day inc.)	01-Dec	01-Jan	14-Jan (3 <sup>rd</sup> wave peak 14 day inc.)	26-Mar	30-Mar	03-Apr	07-Apr
No. Hospital (8.A.M)	122	344	224	508	1792	317	310	242	232
No. in ICU (11.30 P.M)	20	40	31	42	172	67	67	65	56

	01-Oct	26-Oct (2 <sup>nd</sup> wave peak 14 day inc.)	01-Dec	01-Jan	14-Jan (3 <sup>rd</sup> wave peak 14 day inc.)	26-Mar	30-Mar	03-Apr	07-Apr
Positivity rate (7 day average)	3.0%	6.1%	2.7%	12.5%	17.0%	3.6%	3.3%	3.1%	2.9%

	November	December	January	February	March	April
<b>Total Deaths</b>	186	197	1,375	819	205	10
<b>Deaths associated with Nursing Home outbreaks</b>	55	66	522	316	35	1
<b>Deaths associated with Hospital outbreaks</b>	68	68	217	147	40	3

# Cases, numbers in hospital and intensive care

While daily case numbers remain high, the numbers of people in hospital and ICU continue to decrease slowly. The number of deaths per day is decreasing.



Coronavirus  
**COVID-19**  
Public Health  
Advice

	Apr 2020	Summer 2020	Oct 2020	Dec 2020	Jan 2021	10 Mar	17 Mar	24 Mar	31 Mar	7 Apr	Daily count 7 Apr
Cases confirmed per day	859 18-04	8.7 25-06	1158 21-10	262 12-12	6520 10-01	487	520	564	533	499	423
14-day incidence <i>per 100,000 population</i>	212 19-04	3.0 04-07	306 26-10	79 09-12	1532 15-01	163	148	159	161	152	
Hospital in-patients	862 17-04	9 02-08	333 01-11	198 16-12	1949 24-01	415	351	345	313	254	232
<i>Hospital admissions per day</i>	85 04-04	<1 10-07	27 26-10	11 13-12	158 15-01	24	23	24	22	13	13
ICU confirmed cases	150 14-04	4 04-08	43 04-11	26 27-12	217 28-01	100	86	81	68	50	56
<i>ICU admissions per day</i>	14 31-03	<1 03-06	4 03-11	1 16-12	20 17-01	4	3	3	3	2	0
Deaths confirmed per day	46 22-04	<1 30-07	7 01-12	4 17-12	57 03-02	20	10	9	9	6	5

Data are 7-day averages (the indicated day and the preceding 6 days, rounded to the nearest whole number) with the exception of 14 day cumulative incidence, which is the total number of cases in the preceding 14 days per 100,000 population. The highest and lowest values of each indicator are given for each wave of the pandemic, along with the date on which that value was recorded, as well as the data for recent weeks. The historic incidence data may change due to denotification of cases.



Rialtas na hÉireann  
Government of Ireland



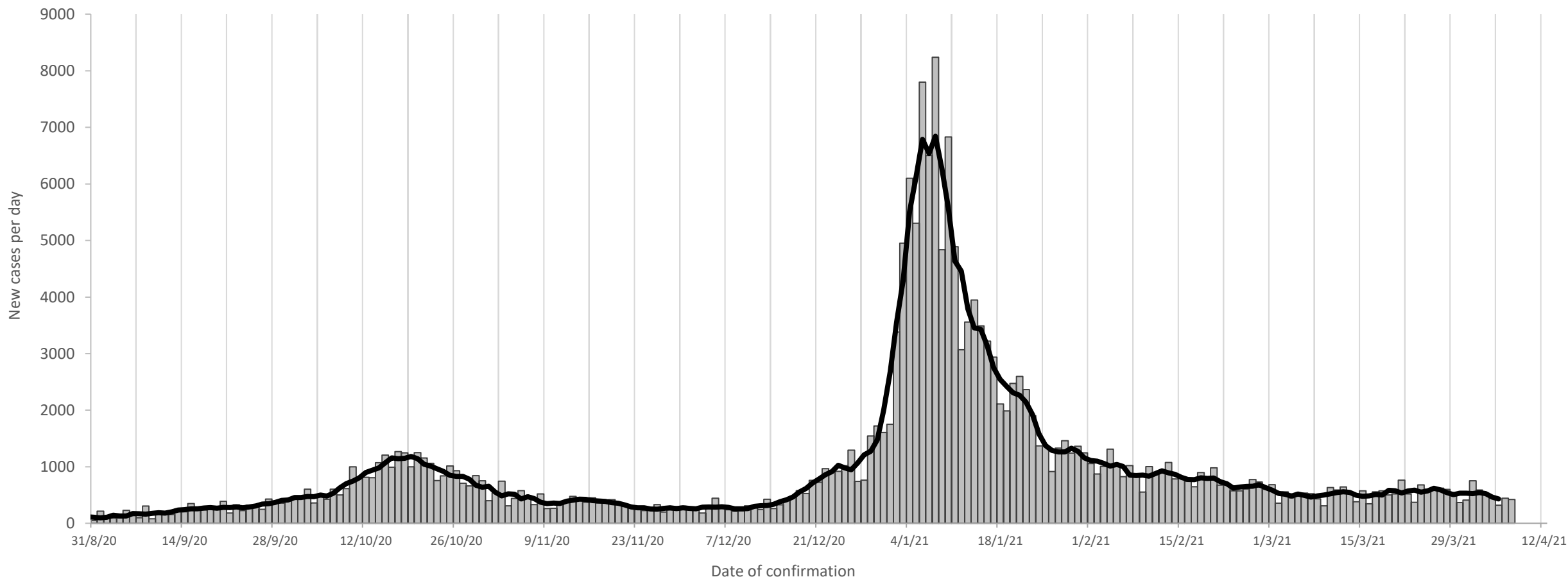
# Cases, Incidence Rates & Testing

# Confirmed cases each day

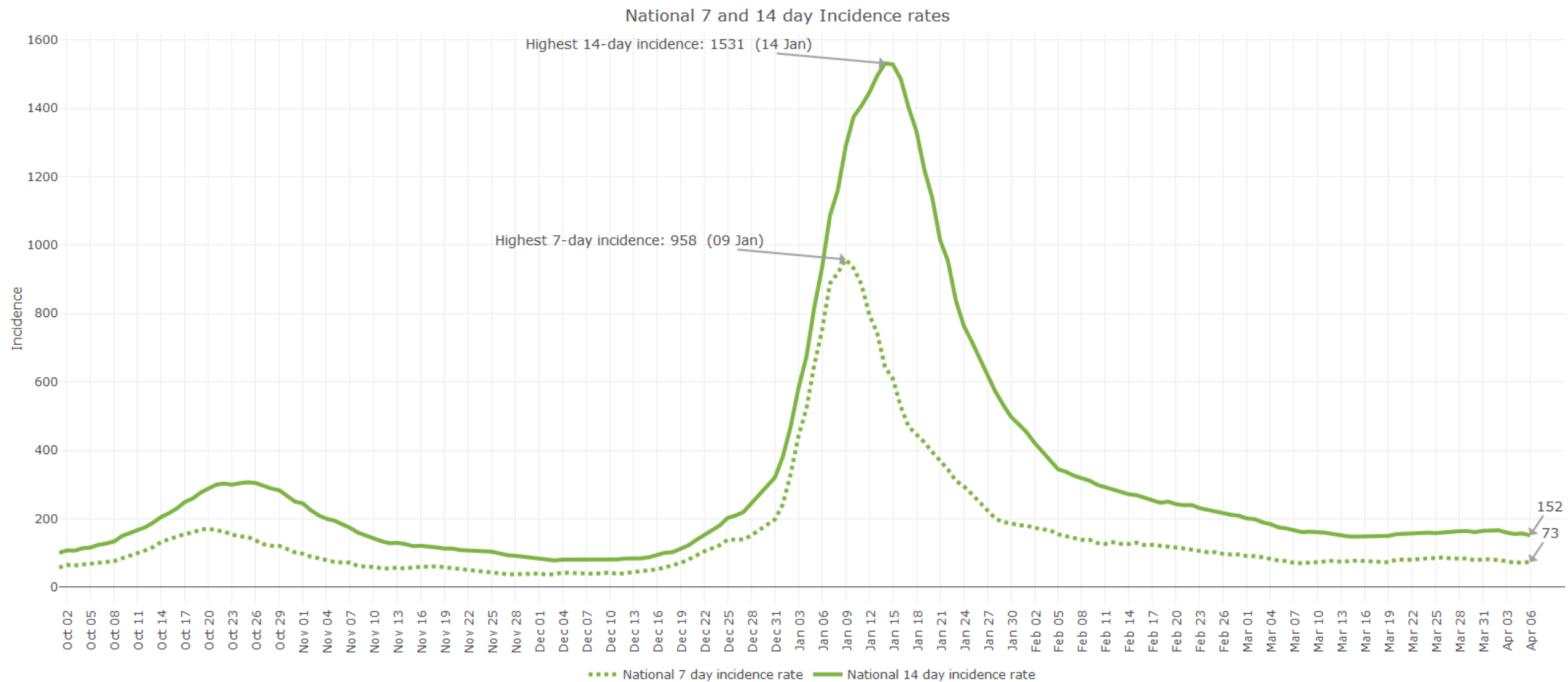
Daily and weekly count and 5-day rolling average. The 5-day average peaked at 1186 on 21 October, reached a low of 251 on 28 November, peaked again at 6847 on 8 January, reached a low of 476 on 8 March, and is now **430**



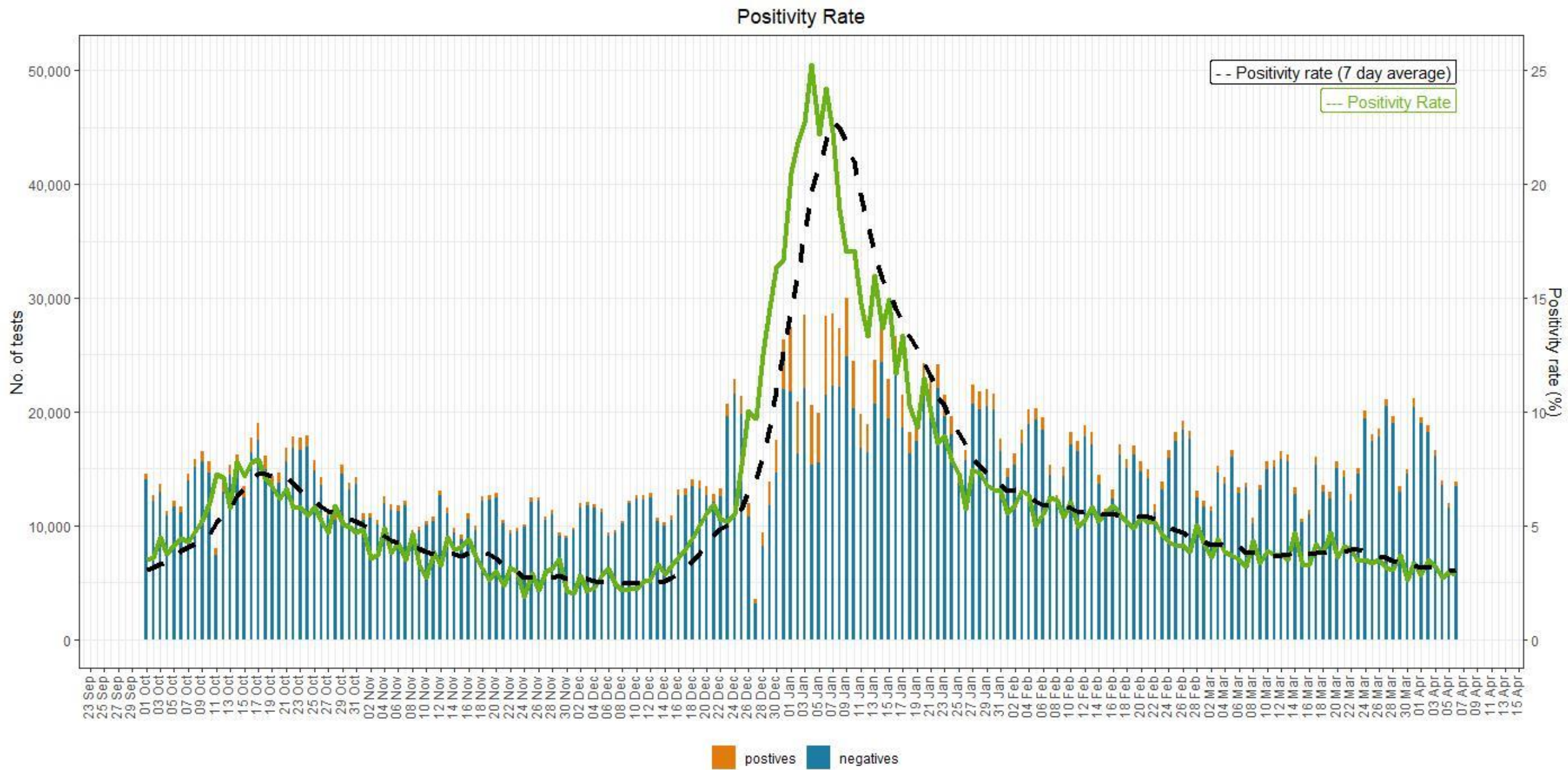
Cases per week	912	1303	1947	2059	3031	4457	7398	7073	4838	3424	2583	2580	1798	2028	1964	3368	6597	15722	45616	25115	14807	8921	7144	6028	5526	4549	3629	3536	3842	3984	3622
----------------	-----	------	------	------	------	------	------	------	------	------	------	------	------	------	------	------	------	-------	-------	-------	-------	------	------	------	------	------	------	------	------	------	------



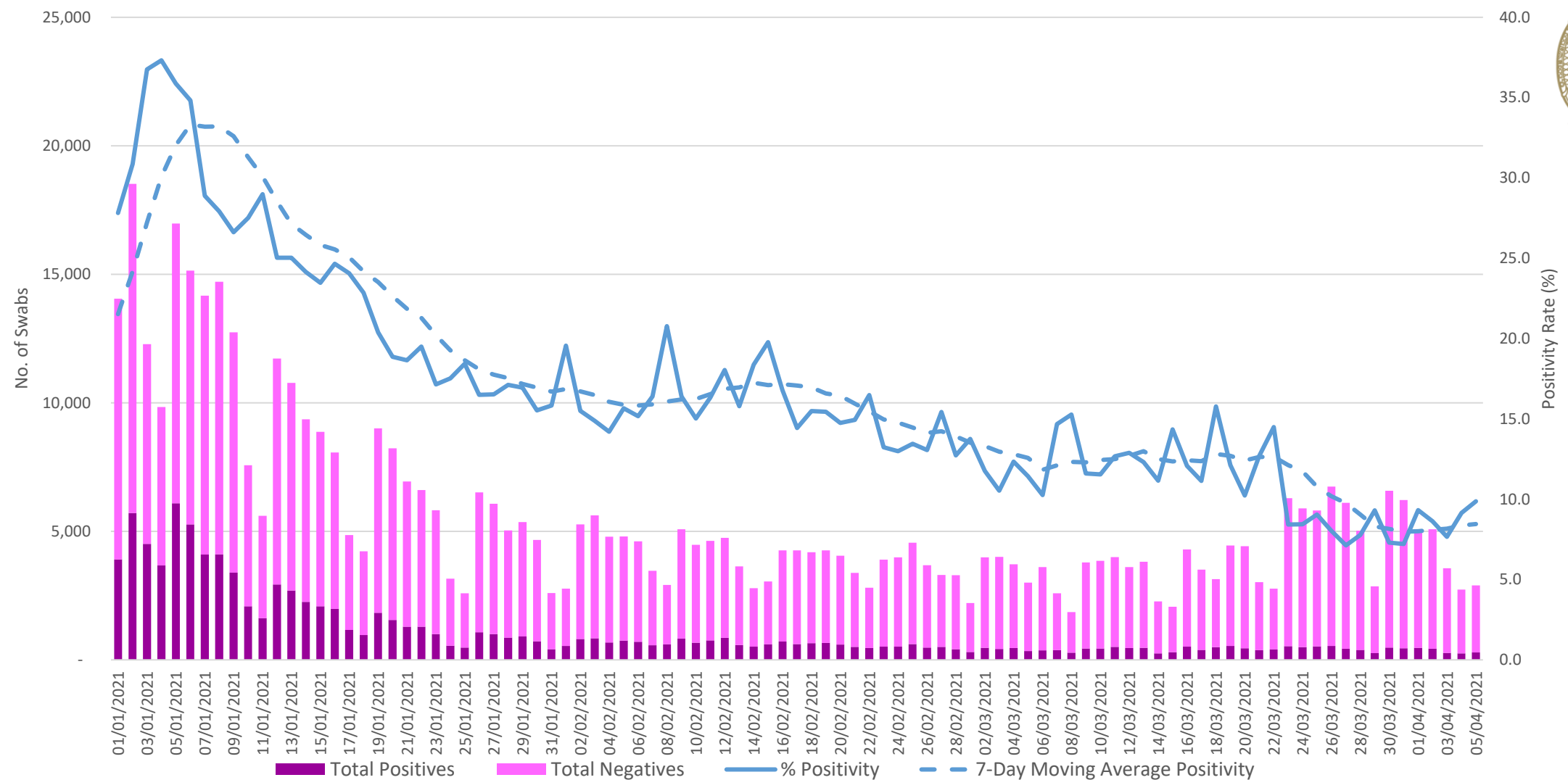
Daily count (bars) 5-day average (line) and weekly counts of the number of laboratory confirmed new cases by date on which they were confirmed by HPSC. Case counts may change due to denotification of cases. Weekly case counts are by notification (event) date and standard epidemiological week.



# Recent trend in positivity rate

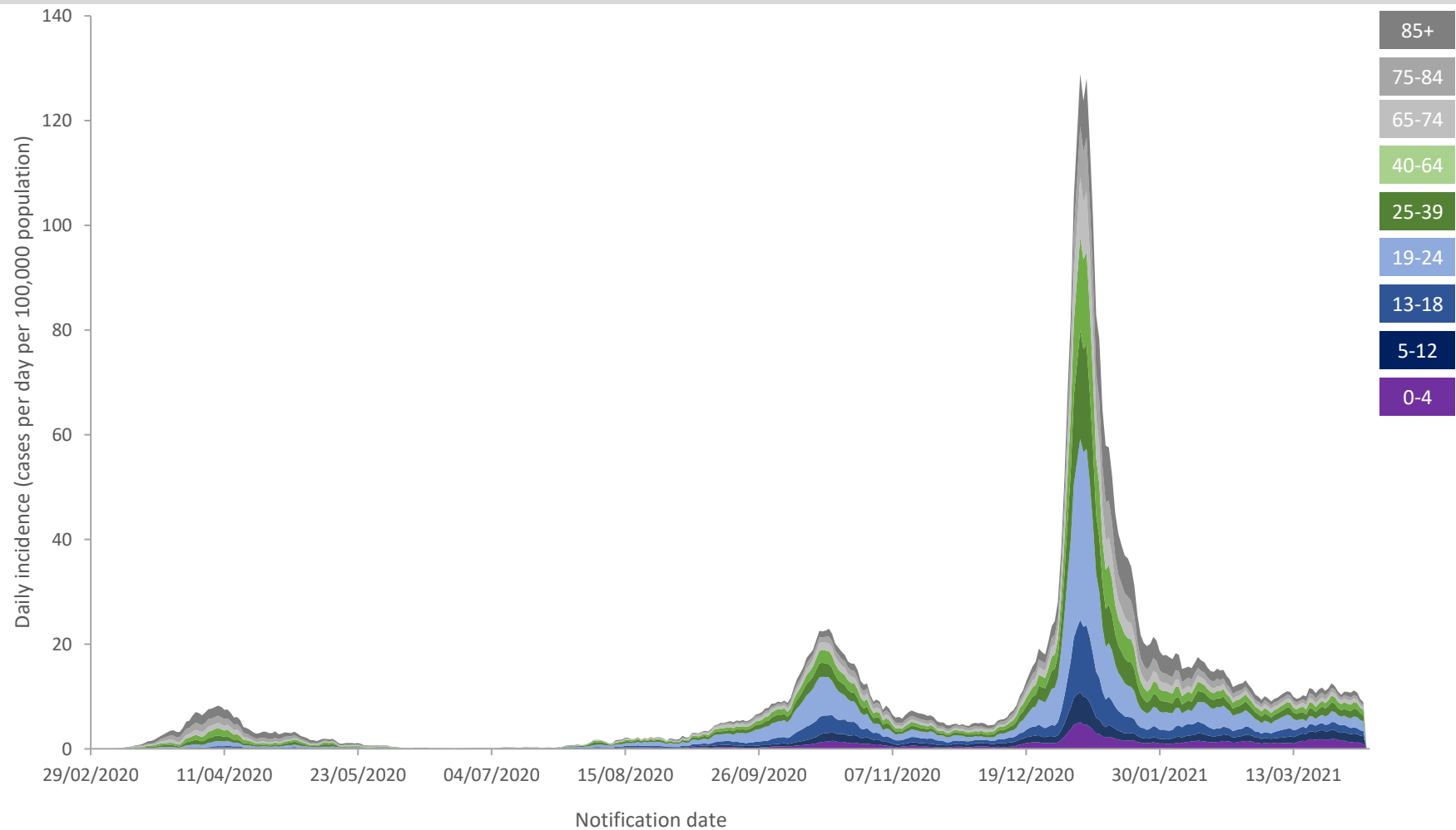


Community Testing (ex. acute, serial & mass): Total tests and % Positivity





# Incidence across different age groups (excluding HCW and LTRC)

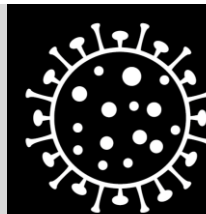


Week	Age band								
	0-4	5-12	13-18	19-24	25-39	40-64	65-74	75-84	85+
9	0.0	0.0	0.3	0.0	0.1	0.1	0.0	0.0	0.0
10	0.0	0.2	0.3	0.0	0.2	0.7	0.5	1.0	0.0
11	0.6	0.2	0.5		5.4	5.0	4.4	4.6	7.4
12	4.5	2.4	7.5	22.9	27.7	31.1	25.2	24.9	37.0
13	6.9	4.2	14.5	58.3	73.3	86.5	72.6	88.5	94.7
14	4.5	4.4	6.7	28.1	40.1	50.9	50.9	91.1	125.8
15	5.7	5.6	9.1	31.4	29.3	47.4	47.7	72.8	119.9
16	3.0	5.3	10.8	19.3	20.8	32.1	29.5	50.9	79.9
17	3.3	4.2	7.8	21.7	23.6	26.7	21.4	56.5	97.7
18	4.5	6.4	9.4	20.2	26.0	21.0	18.7	37.7	53.3
19	2.1	2.7	4.6	13.3	15.2	14.3	10.4	19.3	37.0
20	3.6	1.6	5.1	12.1	16.4	12.1	6.7	9.2	13.3
21	3.3	2.7	4.6	8.5	6.3	8.2	7.5	15.3	22.2
22	2.1	2.4	2.2	4.2	5.1	6.8	4.0	4.6	5.9
23	1.2	0.5	1.3	3.0	0.7	1.9	1.6	5.6	3.0
24	2.7	0.7	1.3	1.5	1.4	1.4	1.6	2.0	1.5
25	0.0	0.4	0.5	1.8	1.4	1.0	1.1	1.0	1.5
26	0.6	0.2	0.3	1.8	1.5	0.7	0.8	1.5	3.0
27	1.5	0.4	0.3	1.8	1.9	0.9	0.0	1.0	0.0
28	0.9	1.1	1.1	10.6	2.0	1.0	1.3	1.5	3.0
29	1.2	0.4	0.8	3.3	3.3	2.0	2.9	1.5	3.0
30	1.8	0.5	1.6	3.6	4.3	0.9	1.9	0.0	1.5
31	4.8	2.6	7.3	11.2	8.5	4.6	2.1	2.5	3.0
32	4.5	3.6	6.7	18.4	16.4	10.5	4.6	2.5	3.0
33	6.0	10.0	12.1	27.2	19.5	12.1	8.6	2.5	7.4
34	7.2	7.5	17.5	37.4	16.5	11.4	5.9	5.1	4.4
35	6.3	9.7	13.5	37.1	18.4	11.1	4.8	9.2	5.9
36	13.0	13.1	17.2	47.7	21.6	13.3	11.0	11.7	14.8
37	17.2	17.9	30.1	63.4	28.7	24.4	22.2	8.7	10.4
38	21.7	26.2	43.9	90.6	44.0	34.9	33.2	19.8	19.2
39	12.1	22.6	42.8	146.7	49.9	41.8	32.9	31.0	20.7
40	29.6	28.8	63.2	167.6	68.0	57.8	34.5	26.0	20.7
41	42.8	46.8	132.9	316.7	115.3	89.7	61.6	51.9	60.7
42	78.1	90.6	198.3	434.2	154.4	142.9	90.5	67.2	71.1
43	81.7	93.9	174.7	302.2	123.4	121.7	85.4	82.4	84.4
44	55.8	67.6	95.8	155.8	75.5	77.5	55.2	55.5	59.2
45	34.7	39.7	58.1	83.9	57.7	45.9	42.8	44.3	47.4
46	41.9	37.2	65.4	89.7	45.3	44.7	32.4	42.7	71.1
47	22.0	34.1	60.0	79.4	34.6	33.0	28.9	39.7	62.2
48	23.2	31.3	45.5	66.4	33.8	29.6	22.2	36.1	40.0
49	28.4	36.8	37.7	40.5	33.2	30.1	25.4	29.0	41.4
50	21.4	39.9	44.1	57.4	39.8	35.0	22.2	31.0	22.2
51	51.9	58.5	74.5	128.3	88.0	81.0	54.6	55.0	51.8
52	77.5	76.9	120.0	326.1	176.0	134.7	95.8	94.7	119.9
53	218.1	236.7	514.0	1401.8	760.7	636.1	423.6	350.1	361.2
1	183.7	208.7	569.2	1329.4	790.4	720.9	497.4	446.3	558.1
2	130.6	126.5	303.0	582.4	414.6	419.4	301.5	410.2	577.3
3	93.5	81.5	168.5	327.3	253.6	244.0	170.0	251.9	413.0
4	74.2	60.9	128.4	228.9	154.6	146.7	119.4	161.3	267.9
5	78.1	72.9	126.8	207.7	126.6	122.9	85.4	117.0	213.2
6	92.0	85.5	126.5	225.8	118.4	102.4	68.3	90.1	124.3
7	87.5	76.7	96.3	253.0	106.6	88.4	59.7	78.4	114.0
8	87.8	69.8	89.3	186.0	94.6	76.7	43.4	53.4	85.9
9	66.7	57.0	65.1	125.3	75.6	58.3	44.7	45.8	40.0
10	68.2	68.0	90.4	145.8	79.2	58.8	39.1	40.7	41.4
11	107.7	90.9	78.9	87.0	85.7	62.2	46.0	55.0	59.2
12	107.1	102.1	85.3	104.2	92.8	69.6	41.2	42.2	45.9
13	70.0	86.6	65.1	115.6	82.3	67.9	39.9	36.1	42.9

Chart shows 5-day rolling average of total incidence (cases per day per 100,000 population) with coloured bands showing the contribution of each age cohort to the total incidence, having adjusted for the number of people in that age cohort (CSO 2016 census data). Healthcare workers and cases associated with outbreaks in long-term residential care are excluded, so that the analysis reflects the pattern of cases in the community. Cases dated by notification date. A number of cases in those aged 65 and older will be linked in the coming days to outbreaks in LTRC.

# Incidence across different age groups (excluding HCW and LTRC)

Incidence in children has stabilised.



Coronavirus  
**COVID-19**  
Public Health  
Advice

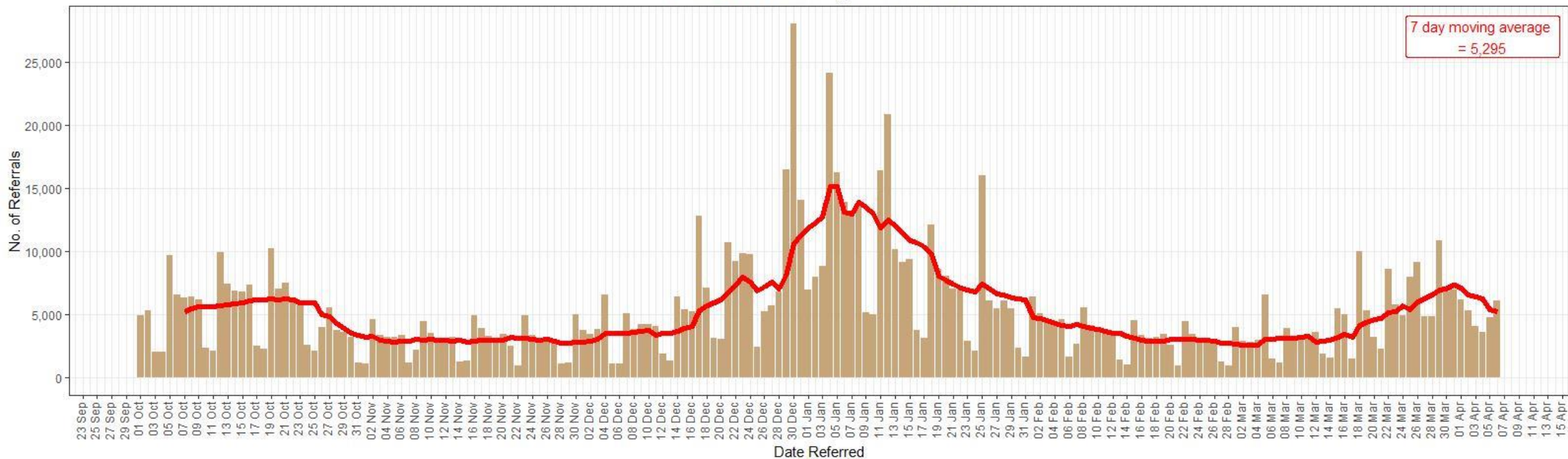
Week	Age band								
	0-4	5-12	13-18	19-24	25-39	40-64	65-74	75-84	85+
47	22.0	34.1	60.0	79.4	34.6	33.0	28.9	39.7	62.2
48	23.2	31.3	45.5	66.4	33.8	29.6	22.2	36.1	40.0
49	28.4	36.8	37.7	40.5	33.2	30.1	25.4	29.0	41.4
50	21.4	39.9	44.1	57.4	39.8	35.0	22.2	31.0	22.2
51	51.9	58.5	74.5	128.3	88.0	81.0	54.6	55.0	51.8
52	77.5	76.9	120.0	326.1	176.0	134.7	95.8	94.7	119.9
53	218.1	236.7	514.0	1401.8	760.7	636.1	423.6	350.1	361.2
1	183.7	208.7	569.2	1329.4	790.4	720.9	497.4	446.3	558.1
2	130.6	126.5	303.0	582.4	414.6	419.4	301.5	410.2	577.3
3	93.5	81.5	168.5	327.3	253.6	244.0	170.0	251.9	413.0
4	74.2	60.9	128.4	228.9	154.6	146.7	119.4	161.3	267.9
5	78.1	72.9	126.8	207.7	126.6	122.9	85.4	117.0	213.2
6	92.0	85.5	126.5	225.8	118.4	102.4	68.3	90.1	124.3
7	87.5	76.7	96.3	253.0	106.6	88.4	59.7	78.4	114.0
8	87.8	69.8	89.3	186.0	94.6	76.7	43.4	53.4	85.9
9	66.7	57.0	65.1	125.3	75.6	58.3	44.7	45.8	40.0
10	68.2	68.0	90.4	145.8	79.2	58.8	39.1	40.7	41.4
11	107.7	90.9	78.9	87.0	85.7	62.2	46.0	55.0	59.2
12	107.1	102.1	85.3	104.2	92.8	69.6	41.2	42.2	45.9
13	70.0	86.6	65.1	115.6	82.3	67.9	39.9	36.1	42.9

Heat map shows age-specific incidence (cases per week per 100,000 population). Healthcare workers and cases associated with outbreaks in long-term residential care are excluded, so that the analysis reflects the pattern of cases in the community. Cases dated by specimen collection date.



Rialtas na hÉireann  
Government of Ireland

# GP Referrals excluding Close Contacts



## Mar

	1 4,022 referrals (-10%)	2 2,917 referrals (-15%)	3 2,818 referrals (-6%)	4 2,960 referrals (+1%)	5 6,554 referrals (+112%)	6 1,486 referrals (+18%)
7 1,166 referrals (+20%)	8 3,953 referrals (-2%)	9 3,329 referrals (+14%)	10 3,128 referrals (+11%)	11 3,310 referrals (+12%)	12 3,641 referrals (-44%)	13 1,875 referrals (+26%)
14 1,632 referrals (+40%)	15 5,518 referrals (+40%)	16 5,005 referrals (+50%)	17 1,551 referrals (-50%)	18 10,025 referrals (+203%)	19 5,309 referrals (+46%)	20 3,206 referrals (+71%)
21 2,303 referrals (+41%)	22 8,607 referrals (+56%)	23 5,792 referrals (+16%)	24 4,951 referrals (+219%)	25 7,985 referrals (-20%)	26 9,197 referrals (+73%)	27 4,861 referrals (+52%)
28 4,892 referrals (+112%)	29 10,894 referrals (+27%)	30 6,791 referrals (+17%)	31 6,982 referrals (+41%)			
Sun	Mon	Tue	Wed	Thu	Fri	Sat

## Apr

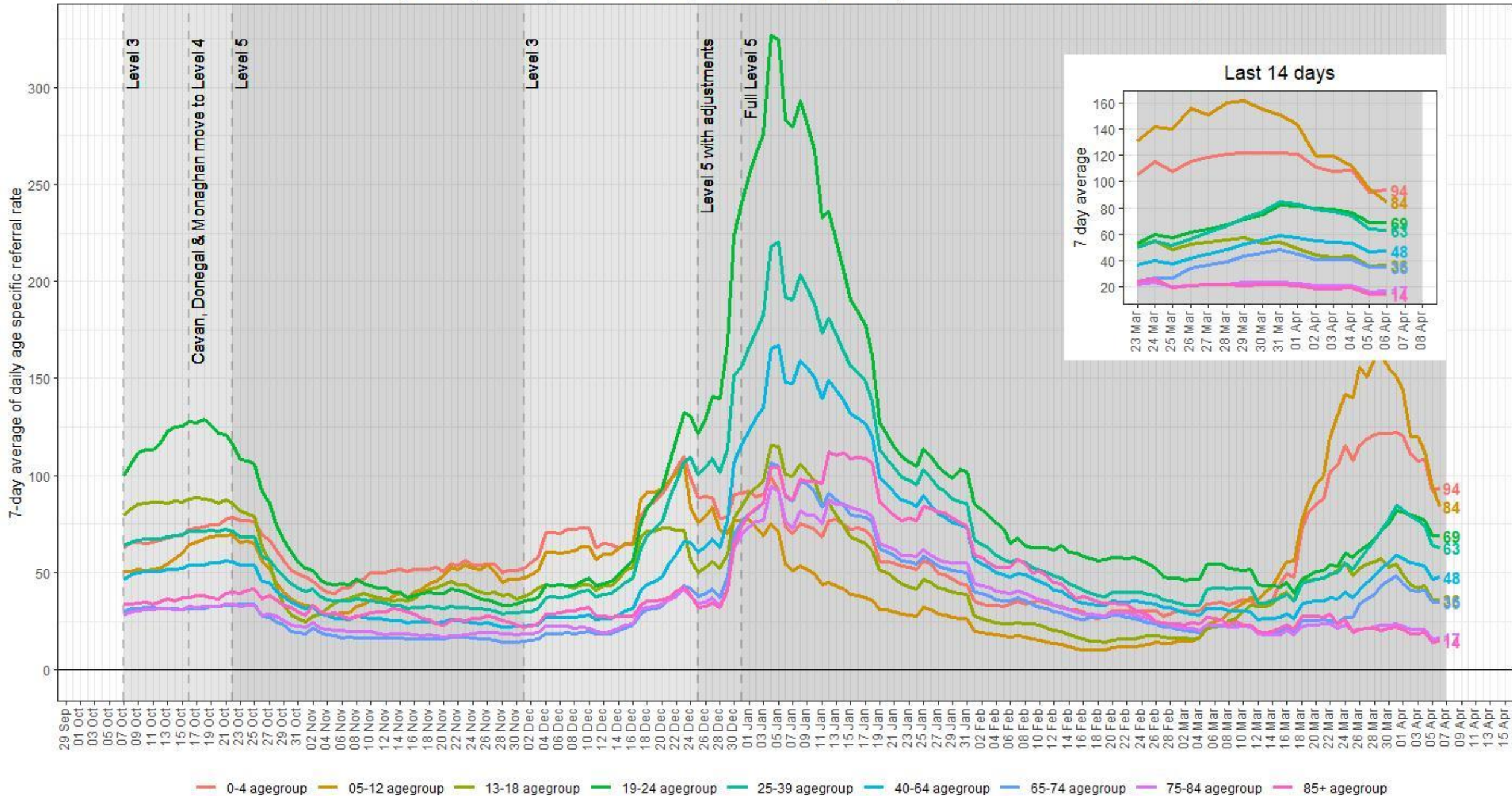
				1 6,206 referrals (-22%)	2 5,322 referrals (-42%)	3 4,073 referrals (-16%)
4 3,613 referrals (-26%)	5 4,755 referrals (-56%)	6 6,115 referrals (-10%)	7	8	9	10
11	12	13	14	15	16	17
18	19	20	21	22	23	24
25	26	27	28	29	30	
Sun	Mon	Tue	Wed	Thu	Fri	Sat

No. of GP Referrals  
(excl. C.C.)

10000  
7500  
5000  
2500  
0



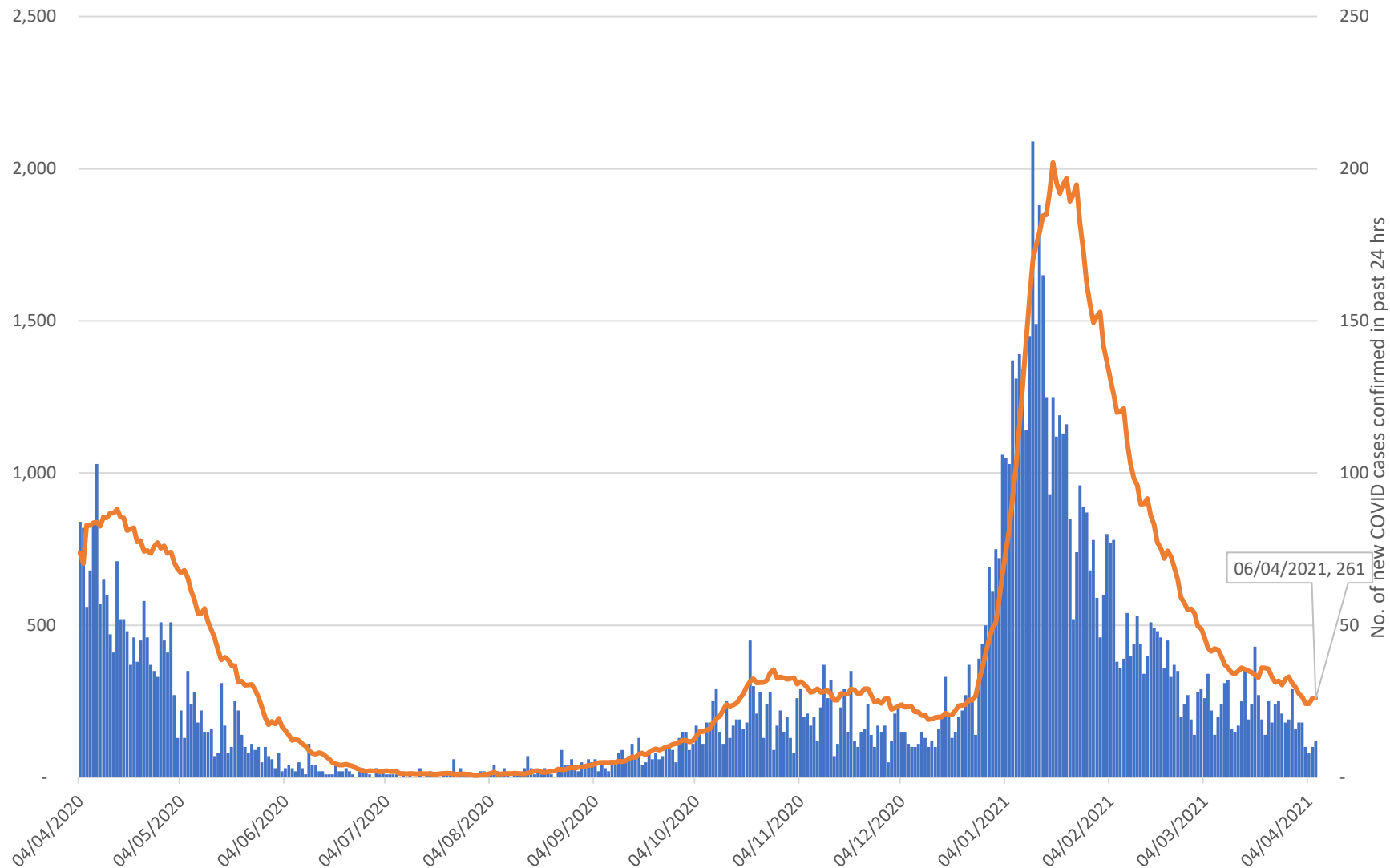
7-day Average of Daily Referral Rate per 100,000 Population (GP Referrals excl. Close Contacts)



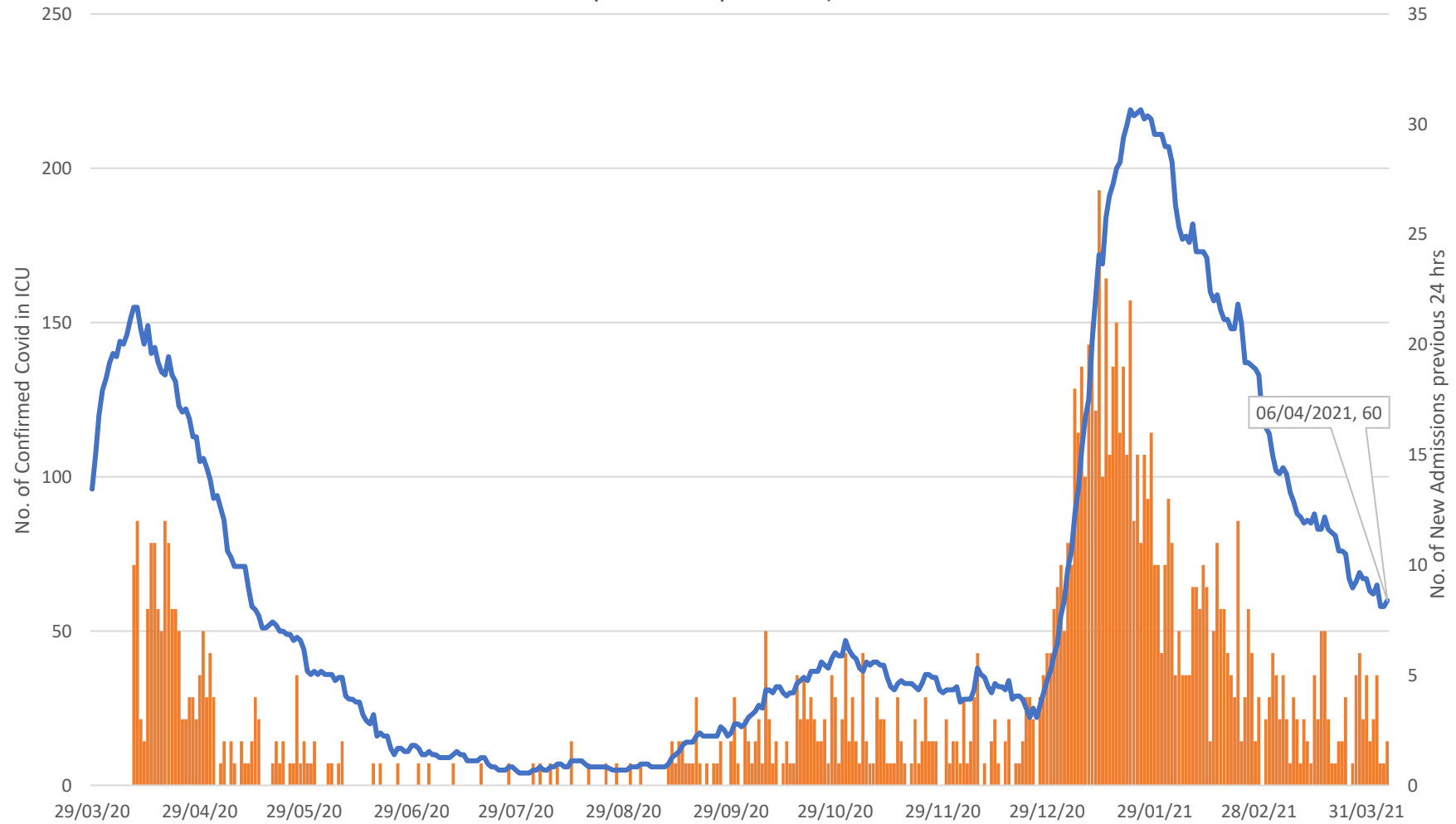


# Hospital & ICU Data

Total No. of Confirmed Covid Cases in Hospital at 8AM &  
No. of New Confirmed Covid Cases in Past 24 hrs



# Total No. of Confirmed Covid Cases in ICU at 11.30AM & No. of New Confirmed Covid Admissions to ICU in past 24 hrs (includes all reporting public & private hospitals and may differ from no. reported by HSE in public hospital ICU)

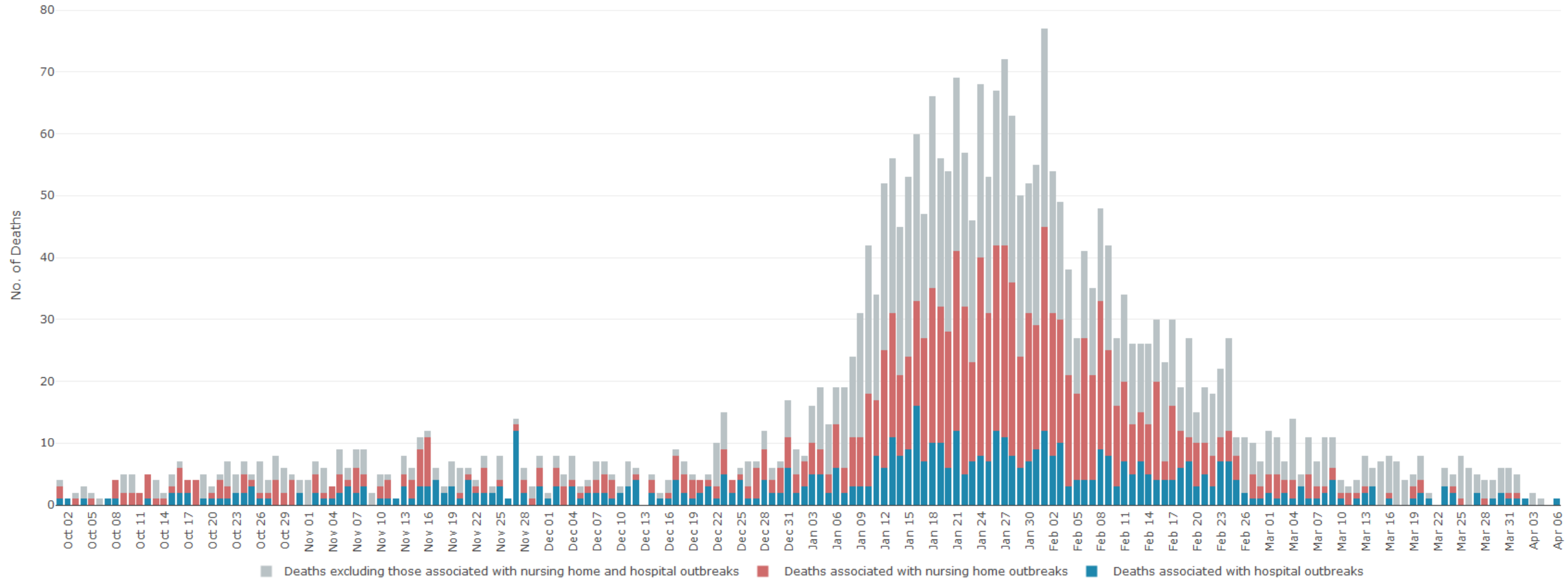




# Deaths



Deaths by Date of Death





# Outbreaks & Clusters

# COVID-19 outbreaks by key outbreak locations, week 13 2021 and overall, 2020-2021 Ireland



- Since March 1<sup>st</sup> 2020, 14,642 outbreaks have been notified to CIDR
- In week 13, 2021, 385 outbreaks were notified. 66 of which were late notifications of outbreaks from December (n=12) January (n=33) and February (n=21)

Key outbreak locations	Week 13	Weeks 10-47	Weeks 48-13
Workplace	23	292	363
Direct Provision Centre	0	37	41
Vulnerable groups*	25	101	327
Prisons	0	9	6
Nursing Home/Community Hospital	1	380	255
Acute hospitals	10	178	227
Schools^	44	78	241
Childcare facility	17	200	201

\*Includes Irish Travellers, Roma, homeless and addiction service population

^These outbreaks are associated with school children +/- school staff. Transmission of COVID-19 within the school has not necessarily been established in these outbreaks

Data source: CIDR March 6<sup>th</sup> 2021 – data to midnight March 3<sup>rd</sup> 2021

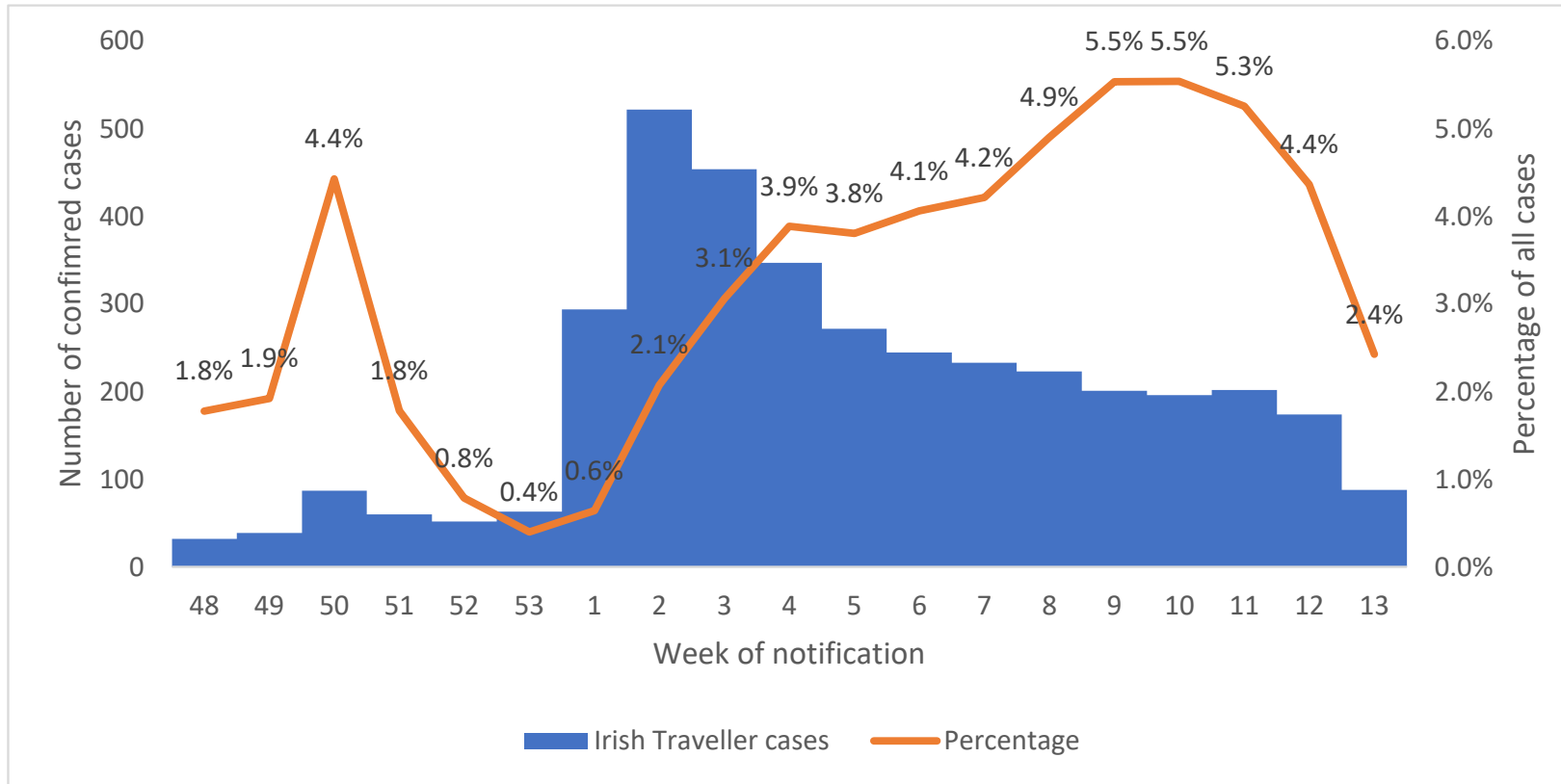
# Weekly Summary



- **Total** number of outbreaks week 13, 2021 n=385 (including 66 late notifications) compared with week 12, 2021 n=454 (included 104 late notifications)
- **Vulnerable groups**
  - Irish Travellers – wave 3 -272 outbreaks, 3784 cases
    - Week 13 – 7 new outbreaks, 39 linked cases
  - 6 new outbreaks in Roma population – 28 linked cases
  - 12 outbreaks in homeless populations notified (9 late notifications) – 26 linked cases
- **Workplace outbreaks**
  - 21 open outbreaks in food industry with 415 linked cases
    - 5 new food industry outbreak since last week's report – 17 linked cases
  - 2 new construction sector outbreaks – 3 linked cases
  - 8 open outbreaks in other key workplaces, 157 linked cases
    - 3 new outbreaks with 12 linked cases
    - 1 open outbreak with 76 linked cases
- **Residential institution outbreaks**
  - 53 outbreaks are 'open' with 445 linked cases (range 0-49)
  - 2 new outbreak since last week's report with 2 linked cases
- **Home care Teams**
  - 31 open outbreaks – 128 linked cases (range 1-15)
    - 14 deaths associated with these outbreaks
  - no new outbreaks notified since last report
- **Nursing Homes & Community Hospitals**
  - 53/634 outbreaks remain open with 2022 linked cases
  - 1 new outbreak with 2 linked cases since last week's report
  - 3 additional cases this week occurring in 3 outbreaks notified in previous weeks
  - Since November 22<sup>nd</sup> 2020, 991 deaths
- **Acute hospitals**
  - 38/405 outbreaks across 23 acute hospitals remain open, 587 linked cases (range 1-155)
  - 10 outbreaks notified last week with 83 linked cases (at least 3 outbreaks were late notifications)
  - Since November 22<sup>nd</sup> 2020, 462 deaths have occurred in cases linked to acute hospitals outbreaks
- **Schools**
  - 44 new outbreaks since last week's report, 102 linked cases (range 0-7)
- **Childcare facilities**
  - 17 new outbreaks since last week's report with 98 linked cases (range 0-20)
  - 27 cases linked to 9 previously notified outbreaks
- **Third-level students/University/college**
  - 73 open outbreaks with 1,030 confirmed linked cases
  - no new outbreaks since last report

Data source: CIDR March 6<sup>th</sup> 2021 – data to midnight March 3<sup>rd</sup> 2021

# COVID-19 infections among Irish Travellers – November 22<sup>nd</sup> 2020 – April 3<sup>rd</sup> 2021



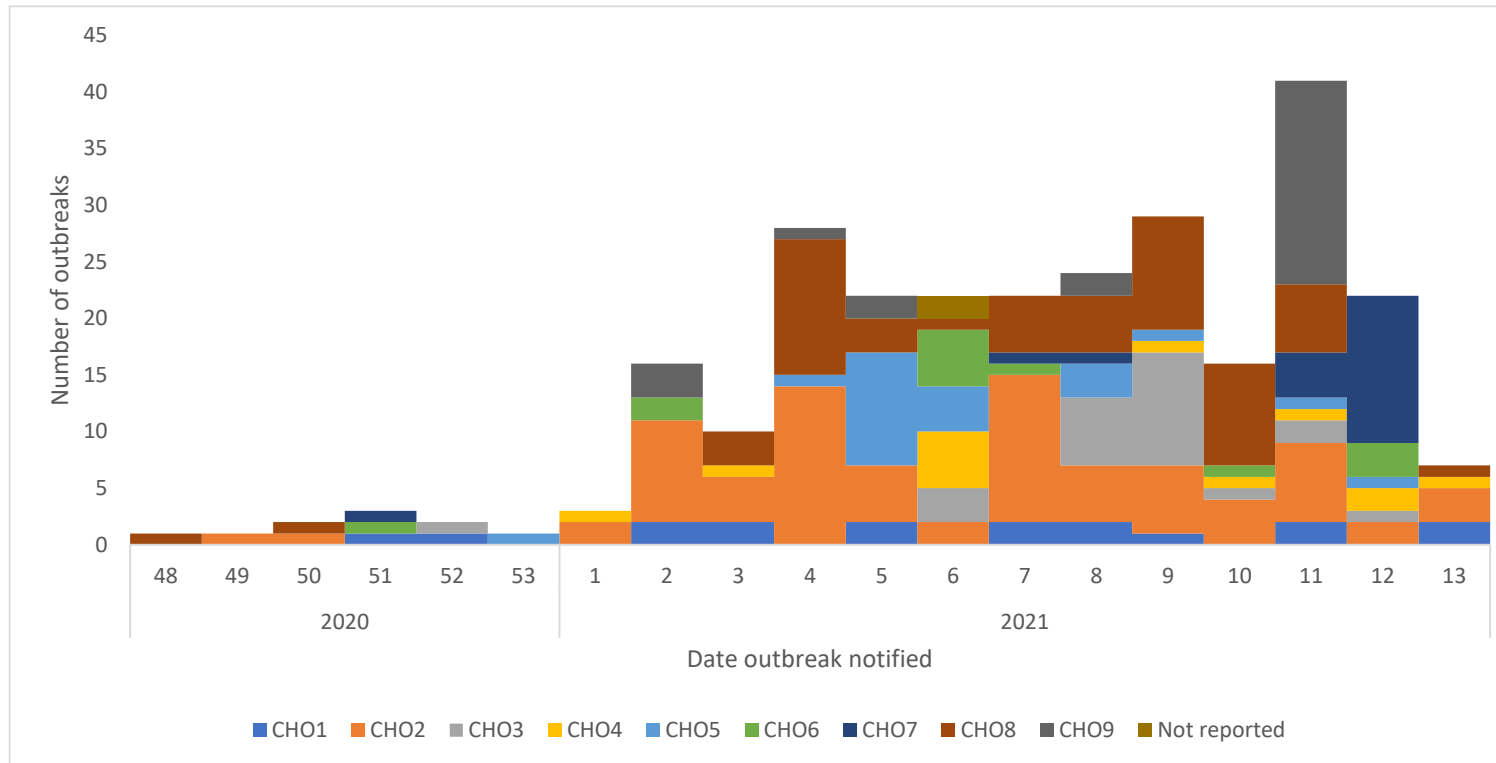
- 3784 confirmed cases
- 47% (1785/3784) male
- Median age 23 years
- 167 (4.4%) hospitalised, 17 ICU admissions and 11 deaths
- Between week 9 and week 11 2021, confirmed cases among Irish Travellers made >5.0% of all confirmed COVID-19 cases each week. This decreased to 2.4% in week 13 2021

## Inclusion criteria

Cases linked to outbreaks reported as affecting Irish Travellers OR whose ethnicity is reported as Irish Traveller, November 22<sup>nd</sup> 2020 to midnight April 3<sup>rd</sup> 2021

Data source: CIDR March 6<sup>th</sup> 2021 – data to midnight March 3<sup>rd</sup> 2021

# COVID-19 outbreaks among Irish Travellers: November 22<sup>nd</sup> 2020 – April 3<sup>rd</sup> 2021



## November 22<sup>nd</sup> 2020 April 3<sup>rd</sup> 2021 (weeks 48 2020 to 13 2021)

- 272 outbreaks linked to Irish Travellers
- Nine of these outbreaks had 50+ linked confirmed cases (of which 3 had >100 linked cases)

## Week 13 2021

- Seven outbreaks notified, with 39 linked cases

Data source: CIDR March 6<sup>th</sup> 2021 – data to midnight March 3<sup>rd</sup> 2021

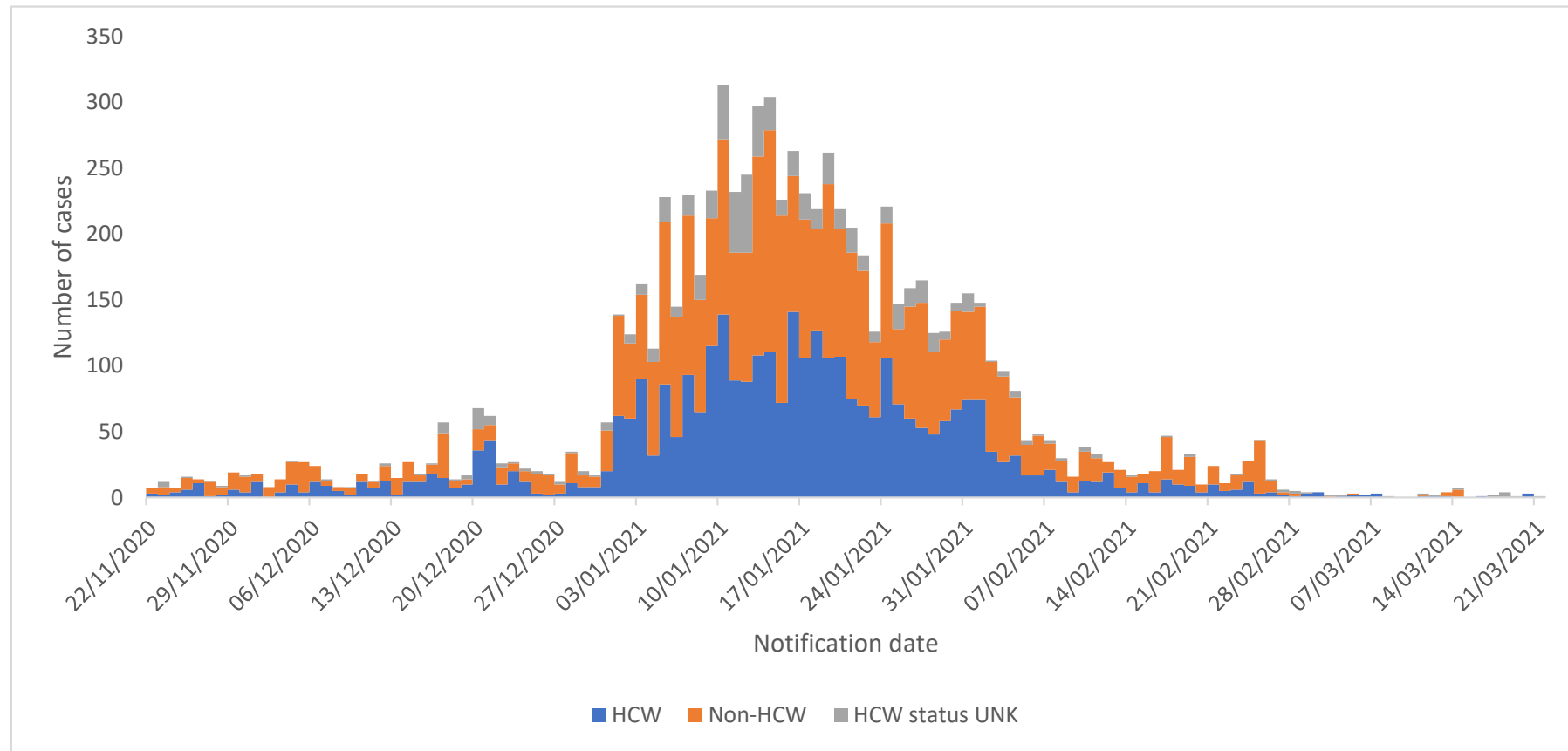
## Focus on 53 Nursing Homes and Community Hospital/Long Stay Units notified since November 22<sup>nd</sup> 2020 and 'OPEN' as of midnight April 3rd 2021



- 2,022 associated cases (816 HCW/staff cases, 1,044 client cases, 162 cases HCW status unknown)
- 2 outbreaks include only HCW/staff cases, 47 include both HCW/staff cases and client cases, no outbreak includes client cases only, for 3 outbreaks the mix of cases is unclear; 1 outbreak has no linked cases
  - 1 new outbreak since last week's report – 2 linked cases
  - 3 previously notified 'open' outbreaks – 3 additional cases since last week's report
  - 49 previously notified 'open' outbreaks– no additional cases since last week's report
  - 18 outbreaks closed since last weeks report

Data source: CIDR March 6<sup>th</sup> 2021 – data to midnight March 3<sup>rd</sup> 2021

# Nursing Homes and Community Hospital/Long Stay Units: November 22<sup>nd</sup> 2020 to midnight April 3<sup>rd</sup> 2021



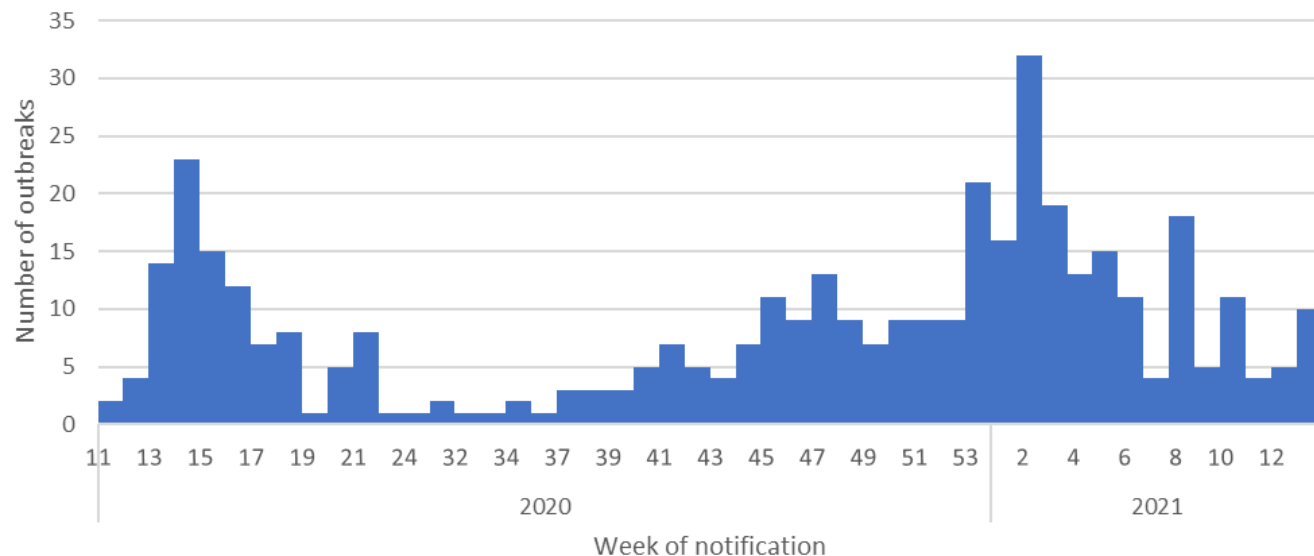
## November 22<sup>nd</sup> 2020 to March 27<sup>th</sup> 2021

- 255 outbreaks notified and 8,086 linked confirmed cases notified, of whom at least 3,378 were HCWs (42%)

Data source: CIDR March 6<sup>th</sup> 2021 – data to midnight March 3<sup>rd</sup> 2021



# Acute Hospital outbreaks March 1<sup>st</sup> 2020 to midnight April 3<sup>rd</sup> 2021 (n=405)



## Overview

- 405 outbreaks in acute hospitals
- 38 ‘open’ acute hospital outbreaks
- 587 confirmed cases linked to the open outbreaks (range 1-155)
- The 38 open outbreaks correspond to outbreaks in 23 Acute Hospitals

## Update

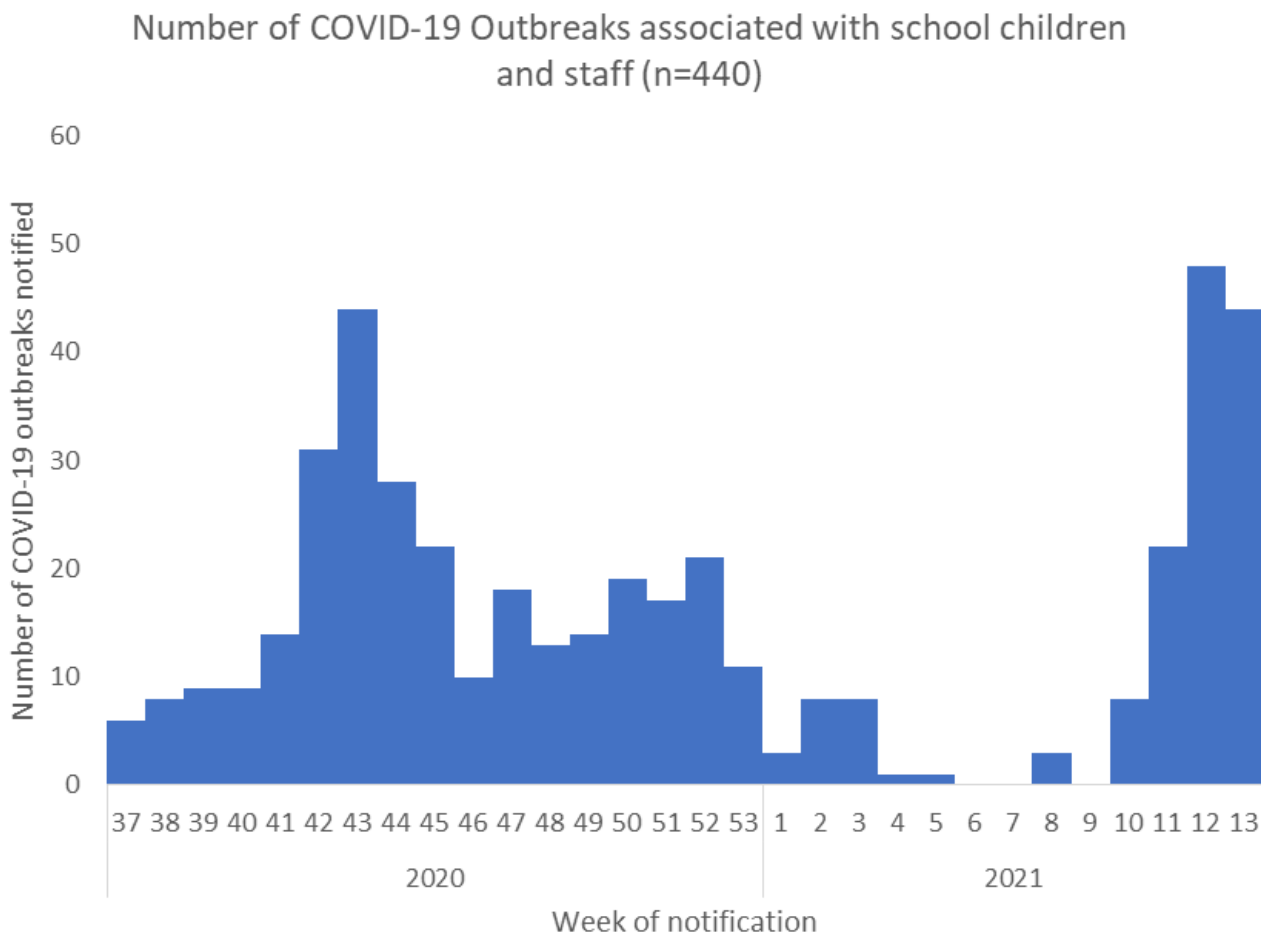
- Ten new outbreaks in week 13 2021
- 83 confirmed cases linked to these outbreaks (range 1-29)
- A total of 122 additional cases were linked to 7 previously reported open hospital outbreaks
- Four outbreaks were closed since last week

\*

Outbreak status	Number of outbreaks	Confirmed linked cases	Number admitted to ICU	Number Died	Number HCWs
All	405	5350	133	677	2267
Open	38	587	18	116	83

Data source: CIDR April 6<sup>th</sup> 2021 – data to midnight April 3<sup>rd</sup> 2021

# Outbreaks associated with school children and staff to midnight 3<sup>rd</sup> April 2021 (n=440)



## Overview

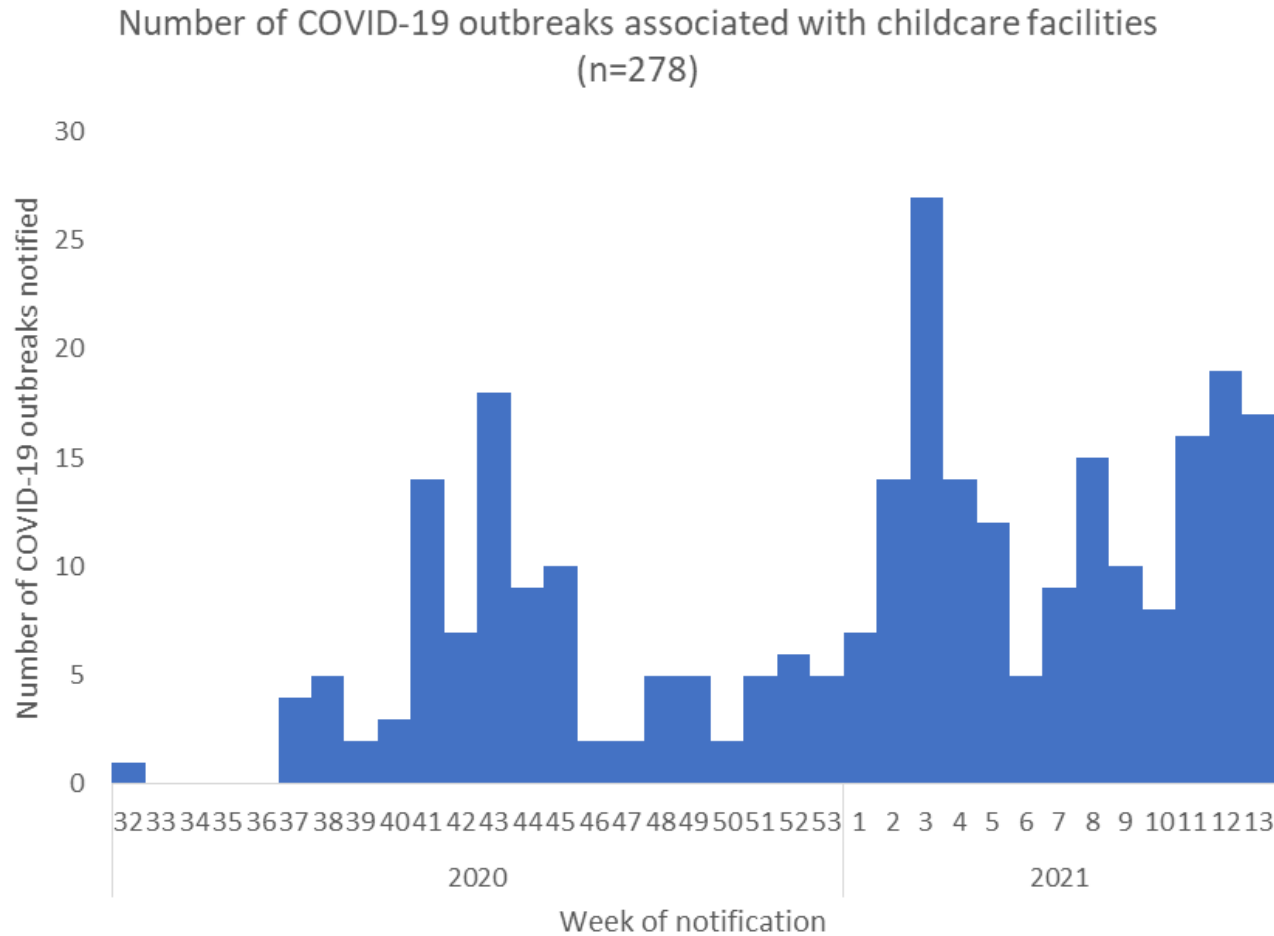
- 440 outbreaks associated with school children and staff notified
- 1,829 linked confirmed cases in total
- 391 outbreaks have  $\geq 2$  linked cases (range: 2-54 cases)
- 319 outbreaks have been closed; 121 remain open

## Update

- 44 new school outbreaks were reported since last week
- 102 cases linked to these newly reported outbreaks (range: 0-7 linked cases)
- 24 additional cases were linked to 15 previously reported outbreaks
- De-notification of one previously reported outbreak

Data source: CIDR April 6<sup>th</sup> 2021 – data to midnight April 3<sup>rd</sup> 2021

# Outbreaks associated with childcare facilities to midnight 3<sup>rd</sup> April 2021 (n=278)



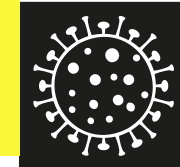
## Overview

- 278 outbreaks associated with children and staff in childcare facilities notified
- 1,620 linked events in total
- 262 outbreaks have  $\geq 2$  linked confirmed cases (range 2-49)
- 191 outbreaks have been closed; 87 remain open

## Update

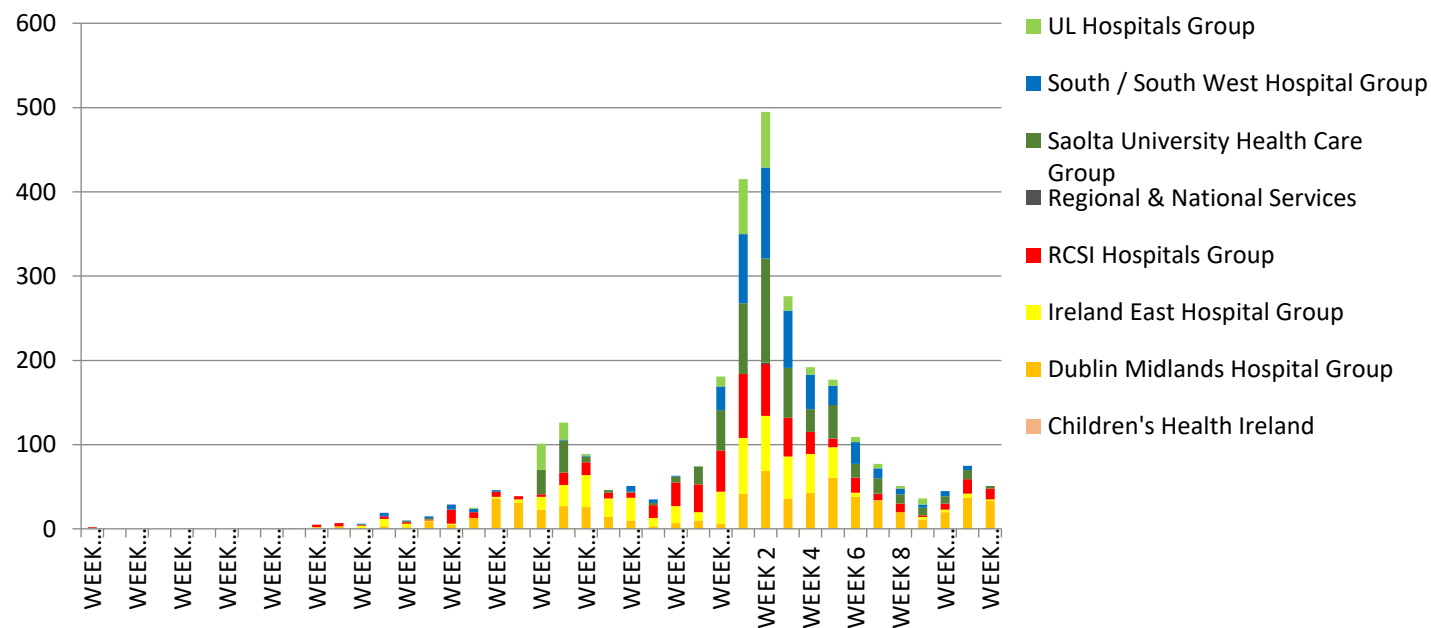
- 17 new outbreaks reported since last week
- 98 confirmed cases linked to these outbreaks (range 0-20)
- 27 additional cases were linked to 9 previously reported childcare facility outbreaks (range: 1-7 newly linked cases)
- 5 outbreaks were closed since last week

Data source: CIDR April 6<sup>th</sup> 2021 – data to midnight April 3<sup>rd</sup> 2021

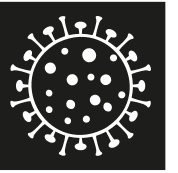


## Acute Hospital

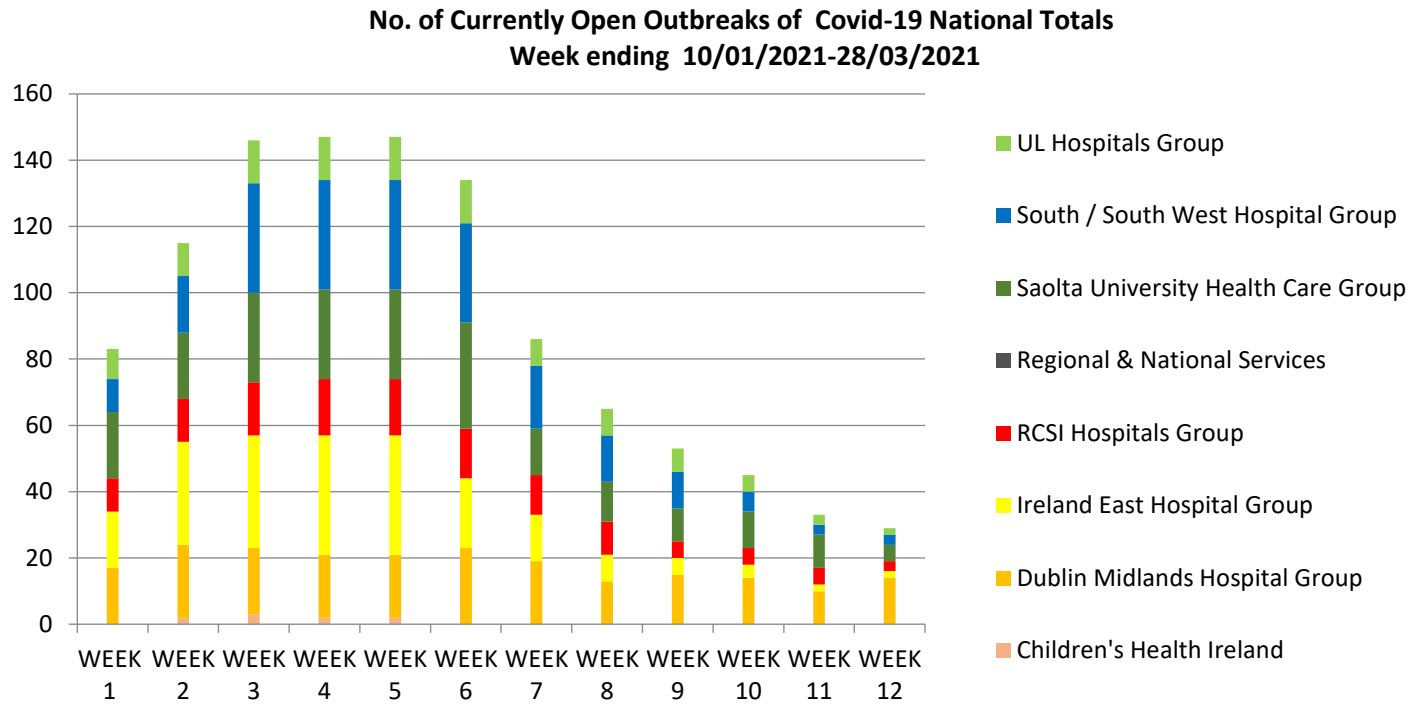
Weekly no. of Hospital-Acquired Covid-19 National Totals  
21st June 2020-28th March 2021

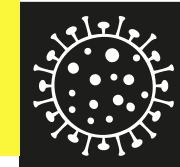


Week ending March 28  
51 cases of cases of hospital acquired  
COVID-19

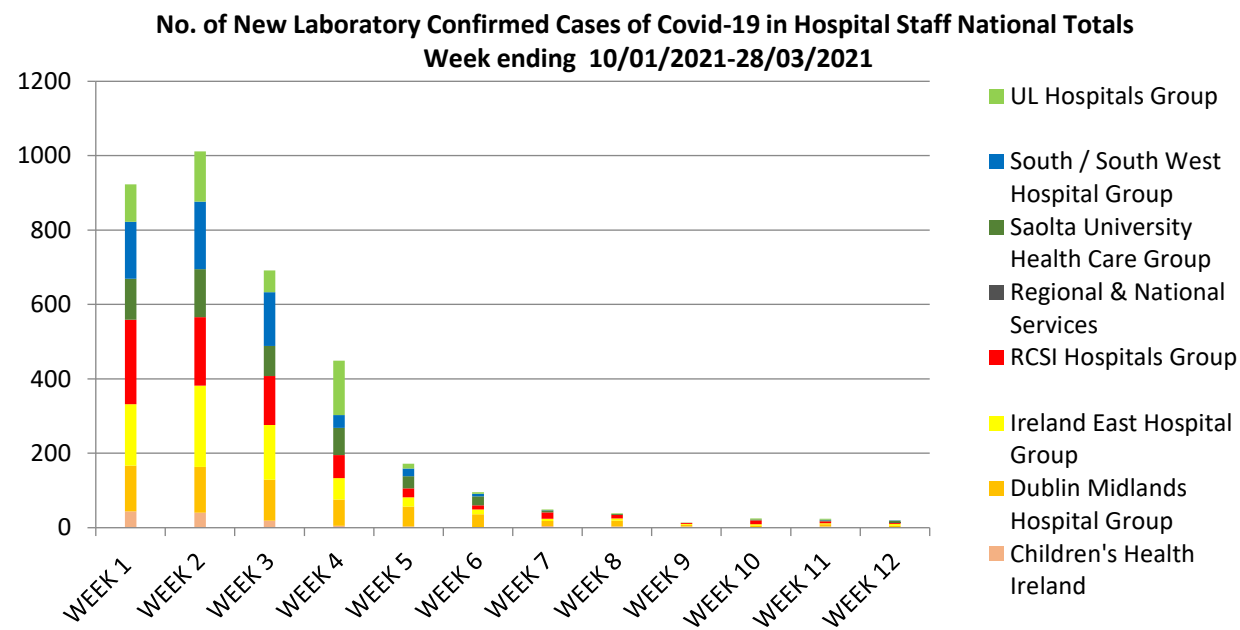


# Acute Hospital

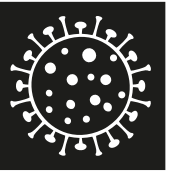




## Acute Hospital

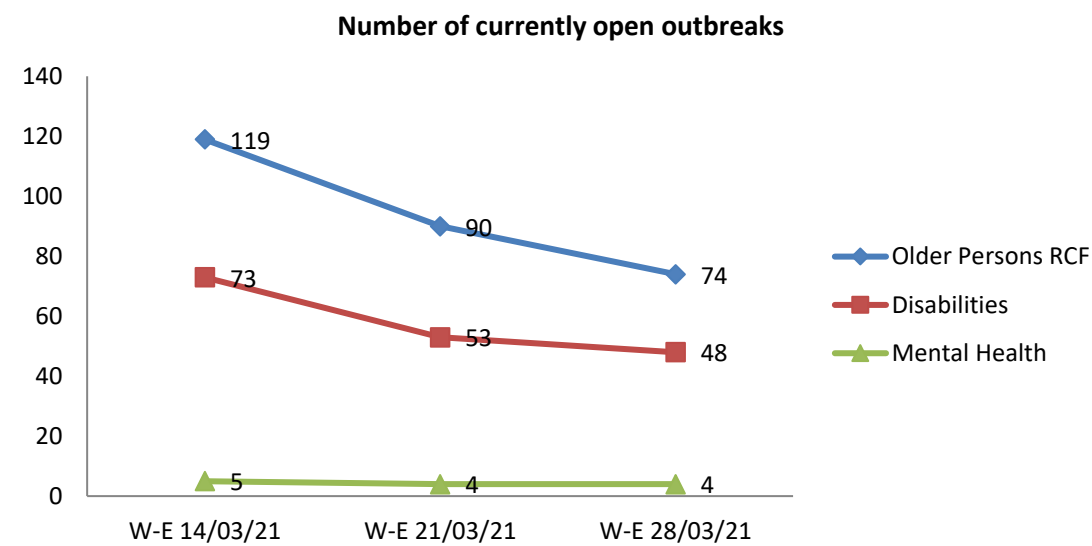


Week ending March 24  
20 cases in acute hospital staff



Community Operations

Number of currently open outbreaks in Residential Care Facilities





# Test & Trace Update



## Testing/sampling and contact tracing NPHE update



### *Sampling*

Over the seven-day period, 31<sup>st</sup> March – 6<sup>th</sup> April, there has been approximately 121,580 swabs taken for COVID-19 testing.

Of total swabs:

- 48,696 (40%) of these were taken in the community
- 16,629 (14%) of these were taken by the National Ambulance Service
- 36,936 (30%) swabs were taken in acute and private acute settings.
- 19,319 (16%) swabs taken were taken as part of the Serial Testing programmes of staff in residential care facilities including mental health facilities and disability facilities meeting the agreed criteria, as well as staff in food production facilities.

## Turnaround Times (31<sup>st</sup>-6<sup>th</sup> April )

### *End-to-end turnaround time*

- The median end-to-end turnaround time, from referral to SMS, for **not detected** tests in the community setting was **1.3 days**.
- The median turnaround time for time, from referral to communication of a **detected result** by SMS, in community settings was **1.8 days**.
- The median end-to-end turnaround time, from referral to the end of contact tracing by call, for **detected cases** in the community setting was **2 days**.



**Overall Swab to laboratory result communicated – Medians:** 24 hours in Acute, 25 hours in Serial Testing, 26 hours in Community

**Overall, 44% of people get their result in less than 24 hours, 89% in less than 36 hours and 97% in less than 48 hours.**

### *Referral to appointment*

In the community, the median time from referral to appointment was 0.2 days.

93% of community referrals are provided with a COVID-19 test appointment within 24 hours.

### *Contact Tracing:*

The mean time and median time to complete all calls are 6.0 hours and 3.7 hours, respectively.

### **Education and Childcare Facility turnaround times**

The median turnaround time from swab taken to result communicated in education and childcare settings was **1.1 days**.

## ***Education and Childcare Testing Programme***



COVID-19 testing has re-started in schools and is ongoing in special education and childcare facilities. In the last week (28<sup>th</sup> March to 3<sup>rd</sup> April 2021):

- 4,691 tests were completed in 198 primary schools resulting in in a **2.0% positivity rate.**
- 780 tests were completed in 50 post-primary schools resulting in a **0.6% positivity rate.**
- 225 tests were completed in 9 Special Education settings resulting in a **1.3% positivity rate**
- 1,639 tests were completed in 105 childcare facilities resulting in a **5.1% positivity rate**

## CMP close contact update (29<sup>th</sup> March-4<sup>th</sup> April)



- The number of close contacts reported during the week ending 4<sup>th</sup> April was 11,120, a 27% decrease from the previous week
- In total, 10,736 (97%) of the contacts created between 29<sup>th</sup> March 4<sup>th</sup> April have been informed of their close contact status at the time of CMP report preparation.
- The mean number of close contacts per case (incl. cases with no close contacts) was 2.3, a decrease from 2.4 the previous week
- The number of complex contact episodes identified during the week ending 4<sup>th</sup> April was 1,355, a 15% decrease from the week ending 28<sup>th</sup> March

**Source: HSE – COVID-19 Contact Management  
Programme Weekly report**



## Close Contact Attendance and Positivity Rates at Test 1 – 22<sup>nd</sup>-28<sup>th</sup> March

- Of the close contacts created between 22<sup>nd</sup> -28<sup>th</sup> March, 87% of those who were referred for a Test 1 appointment attended for testing.
- Results were available at the time of report preparation for 9,935 close contacts, 14.8% (1,475) of whom were positive.
- Household close contact positivity rate at 30.7%

**Source: HSE – COVID-19 Contact Management Programme Weekly report**

*Table 1.11 – SARS-CoV2 Test 1 Results by Circumstances of Contact – Contacts Created 22/03/2021 – 28/03/2021*

<i>Circumstances of Contact</i>	<i>Number of Results Reported</i>	<i>Positive Results</i>	<i>Positivity Rate</i>
<i>Household</i>	3045	936	30.7%
<i>Social</i>	1068	147	13.8%
<i>Childcare Facilities</i>	1002	86	8.6%
<i>Primary School</i>	2784	73	2.6%
<i>Secondary School</i>	528	19	3.6%
<i>Special School</i>	115	6	5.2%
<i>Third Level Education</i>	<5	<5	*
<i>Workplace</i>	280	25	8.9%
<i>Transport</i>	128	14	10.9%
<i>Healthcare Setting: Patient**</i>	38	7	18.4%
<i>Healthcare Setting: Staff**</i>	9	<5	*
<i>Sport</i>	13	<5	*
<i>Other</i>	74	7	9.5%
<i>Not Recorded</i>	848	150	17.7%
<b><i>Total</i></b>	<b>9935</b>	<b>1475</b>	<b>14.8%</b>

*\* Unstable positivity rate due to small numbers.*

*\*\* The majority of patients and staff who are close contacts in a healthcare setting are managed by Infection Prevention and Control and Occupational Health teams off the CCT.*



## Close Contact Attendance and Positivity Rates at Test 2 – 15<sup>th</sup>-21<sup>st</sup> March

- Of the close contacts created between 15<sup>th</sup>-21<sup>st</sup> March, 5,073 (89%) of those who were referred for a Test 2 appointment attended for testing.
- Results were available at the time of report preparation for 4,670 close contacts, 181 (3.9%) of whom were positive.
- Household close contact positivity rate at 9.6%

*Table 1.14 – SARS-CoV2 Test 2 Results by Circumstances of Contact – Contacts Created 15/03/2021 to 21/03/2021*

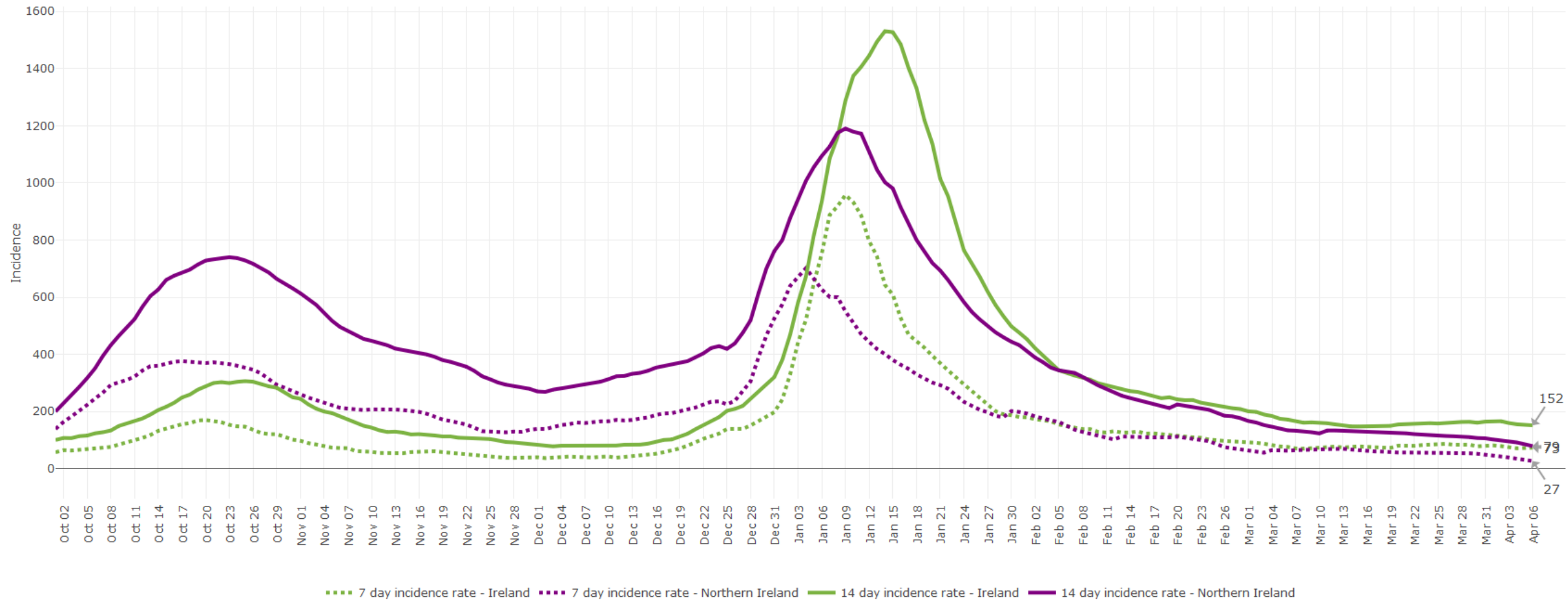
<i>Circumstances of Contact</i>	<i>Number of Results Reported</i>	<i>Positive Results</i>	<i>Positivity Rate</i>
<i>Household</i>	1109	107	9.6%
<i>Social</i>	748	22	2.9%
<i>Childcare Facilities</i>	446	11	2.5%
<i>Primary School</i>	1333	12	0.9%
<i>Secondary School</i>	276	<5	*
<i>Special School</i>	38	<5	*
<i>Third Level Education</i>	<5	<5	*
<i>Workplace</i>	136	<5	*
<i>Transport</i>	32	<5	*
<i>Healthcare Setting: Patient**</i>	15	<5	*
<i>Healthcare Setting: Staff**</i>	6	<5	*
<i>Sport</i>	6	<5	*
<i>Other</i>	56	<5	*
<i>Not Recorded</i>	468	25	5.3%
<b>Total</b>	<b>4670</b>	<b>181</b>	<b>3.9%</b>

*\* Unstable positivity rate due to small numbers.*

*\*\* The majority of patients and staff who are close contacts in a healthcare setting are managed by Infection Prevention and Control and Occupational Health teams off the CCT.*

**Source: HSE – COVID-19 Contact Management Programme Weekly report**

7 and 14 day Incidence rates for Ireland and Northern Ireland



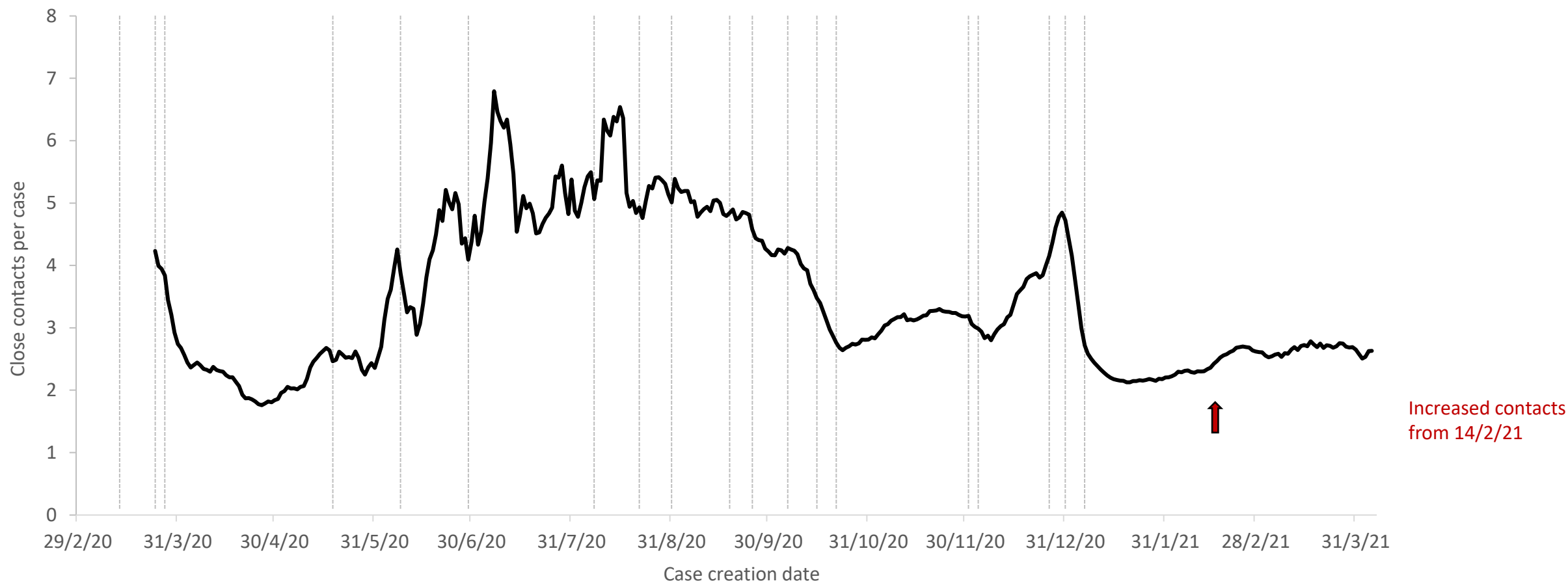


# Growth in Cases & R number



# Close contacts of adult confirmed cases

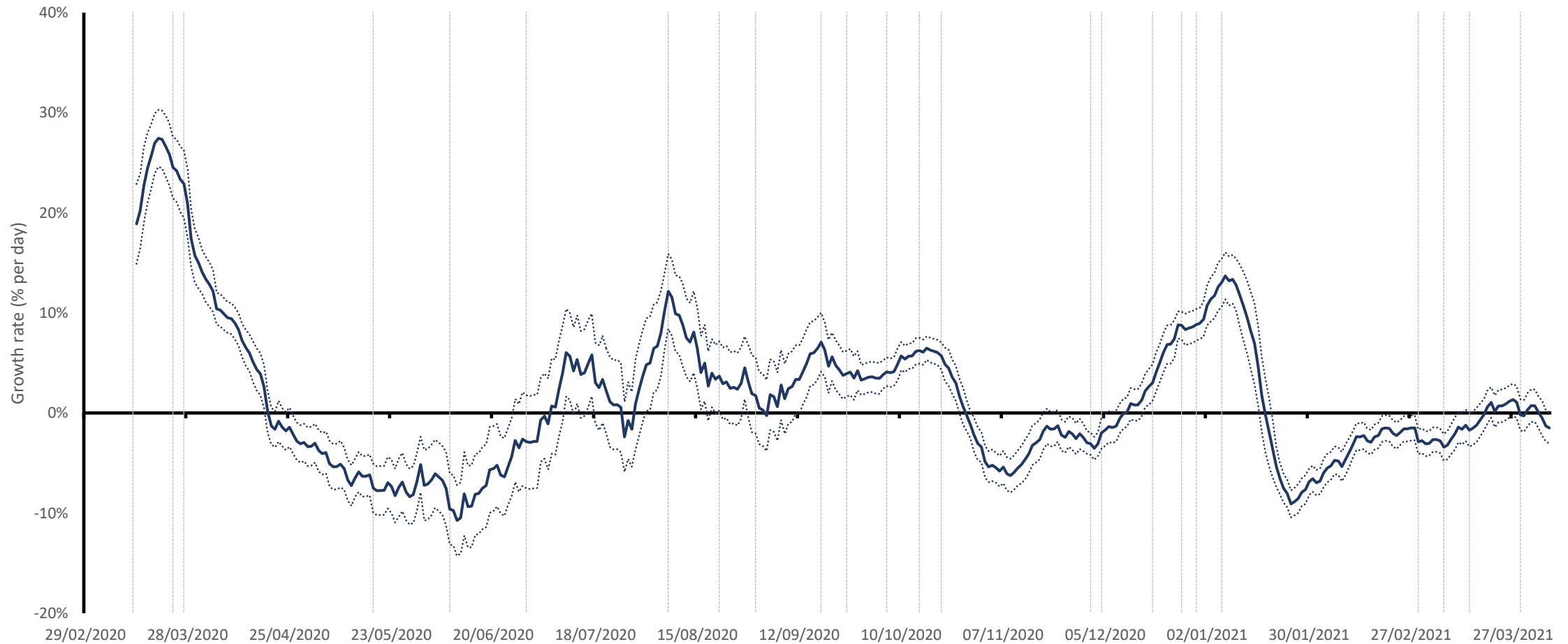
The mean number of close contacts per confirmed case. The number of contacts was very low (2 or less) during April, but increased to 5-6 per case during the summer. The public health measures during October was associated with a progressive reduction in close contacts, to below 3. The number of close contacts remained below 3.3 on average until early December, rose to almost 5 on average by 28 December and fell to 2.1 in January. It has increased to  $\approx 2.6$  in the latter half of February 2021, and remains stable at that level



The average number of close contacts per confirmed case. Data from COVID-19 Care Tracker (CCT). Cases dated by case creation date. Cases (but not contacts) aged 18 and younger are excluded. Data are 7-day trailing averages except for the months of June – August where a 21-day trailing average is used due to very low case counts.

# Growth rate for case numbers

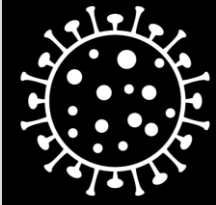
Growth rate peaked at 13% per day over the 21-day period up to 10 January 2021. While case numbers decreased very rapidly in January (-6 to -10% per day) the rate of decline slowed to -2 to -4% per day from mid-February, and from mid-March case numbers were static or growing slowly (growth rate 0% to +2% per day). The growth/decline rate is currently estimated at 0% to -2% per day, but this may be influenced by lower case counts over the Easter period.



Growth rate calculated as the average growth rate over a 21-day trailing window, with 95% confidence interval; cases dated by notification (event) date.

# Week-on-week decline in cases

While case counts increased marginally in weeks 11 and 12 (by +9% and +4% respectively) the case count in week 13 was 9% less than week 12



Coronavirus  
**COVID-19**  
Public Health  
Advice

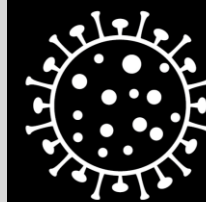
Week	Cases	Week-on week change
2021 - 1	45,616	
2	25,115	-45 %
3	14,807	-41 %
4	8,921	-40 %
5	7,144	-20 %
6	6,028	-16 %
7	5,526	-8 %
8	4,549	-18 %
9	3,629	-20%
10	3,536	-3%
11	3,842	+9%
12	3,984	+4%
13	3,622	-9%



Rialtas na hÉireann  
Government of Ireland

# Estimates of effective reproduction number (R)

Reproduction number is close to or just below 1.0 with high levels of uncertainty in its estimation;  
it is currently estimated at 0.7 – 1.1



Coronavirus  
**COVID-19**  
Public Health  
Advice

Method	Estimate	95% confidence interval
SEIR model-inferred	0.80	1.53 – 1.09
Bayesian model	0.70	0.33– 1.17
Time-dependent R	0.89	0.81 – 0.96
GAM estimate 30 Mar 2021	1.05	0.87 – 1.23
GAM estimate 6 Apr 2021	1.13	0.88 – 1.538

Estimates generated 7 April 2021, refer to IEMAG technical notes for methodology. Estimates are unreliable when case numbers are low or variable. SEIR-inferred estimate is slow to respond to changes in R. The time-dependent R estimate lags behind other estimates. These R estimates relate to viral transmissions and infections that occurred approximately 7-14 days ago. The estimate of R is influenced by different patterns of transmission in large outbreaks, smaller clusters, and individual transmission.



Rialtas na hÉireann  
Government of Ireland

# Situation analysis 7 April 2021



- Incidence is stable or decreasing, but remains high and there is significant uncertainty
- Cases (5-day average) 430 cases per day; 14-day incidence 152 per 100,000
  - Reproduction number (R) is uncertain and estimated at 0.7 – 1.1, rate of decline in case numbers 0 to -2% per day
  - Easter holiday influences pattern of referral and testing and other indicators
- Return to in-person education associated with
  - Moderate and transient increases in incidence, mostly explained by changes in testing
  - Increases in mobility and attendance at workplaces
  - Implications: stay home if symptomatic, seek a test, adults keep contacts low, continue to work from home
- Level of close contact is constant
  - The efforts of the majority of the population are achieving a 75-85% suppression of viral transmission
  - Concern that level of mobility continues to increase
- While evidence of protective effect of vaccination in LTRC and HCW the population is not protected, situation remains volatile and high risk



# European Data

## EU/UK ranked by 14 day percentage change (6<sup>th</sup> April)

EU and the UK	14 day incidence	Previous 14 day incidence	% change in 14 day incidence
Croatia	539.65	283.68	90%
Lithuania	392.98	268.23	47%
France	775.4	558.86	39%
Poland	969.28	736.75	32%
Slovenia	644.56	523.2	23%
Sweden	759.04	617.47	23%
Spain	178.87	148.3	21%
Belgium	534.08	445.26	20%
Netherlands	610.25	509.28	20%
Greece	376.31	315.5	19%
Germany	251.45	213.18	18%
Cyprus	667.2	610	9%
Romania	396.15	371.43	7%
Austria	476.63	450.67	6%
Luxembourg	473.34	453.69	4%
<b>Ireland</b>	<b>150.33</b>	<b>152.44</b>	<b>-1%</b>
Bulgaria	634.93	661.1	-4%
Hungary	1093.34	1148.16	-5%
Latvia	341.37	376.26	-9%
Portugal	60.37	67.73	-11%
Italy	441.75	526.82	-16%
Finland	132.74	173.32	-23%
United Kingdom	85.46	116.61	-27%
Estonia	996.88	1505.04	-34%
Denmark	125.79	194.07	-35%
Slovakia	278.08	449.81	-38%
Czechia	744.3	1304.73	-43%
Malta	211.53	806.72	-74%

- As of 16<sup>th</sup> Dec, this daily data is now sourced from Our World In Data (OWID) instead of ECDC as they have switched to weekly reporting (Thursday evenings).
- OWID source their confirmed cases and deaths data from the COVID-19 Data Repository by the Center for Systems Science and Engineering (CSSE) at Johns Hopkins University (JHU). <https://github.com/owid/covid-19-data/tree/master/public/data>

## EU/UK ranked by 14 day incidence (6<sup>th</sup> April)

EU and the UK	14 day incidence	Previous 14 day incidence	% change in 14 day incidence
Hungary	1093.34	1148.16	-5%
Estonia	996.88	1505.04	-34%
Poland	969.28	736.75	32%
France	775.4	558.86	39%
Sweden	759.04	617.47	23%
Czechia	744.3	1304.73	-43%
Cyprus	667.2	610	9%
Slovenia	644.56	523.2	23%
Bulgaria	634.93	661.1	-4%
Netherlands	610.25	509.28	20%
Croatia	539.65	283.68	90%
Belgium	534.08	445.26	20%
Austria	476.63	450.67	6%
Luxembourg	473.34	453.69	4%
Italy	441.75	526.82	-16%
Romania	396.15	371.43	7%
Lithuania	392.98	268.23	47%
Greece	376.31	315.5	19%
Latvia	341.37	376.26	-9%
Slovakia	278.08	449.81	-38%
Germany	251.45	213.18	18%
Malta	211.53	806.72	-74%
Spain	178.87	148.3	21%
<b>Ireland</b>	<b>150.33</b>	<b>152.44</b>	<b>-1%</b>
Finland	132.74	173.32	-23%
Denmark	125.79	194.07	-35%
United Kingdom	85.46	116.61	-27%
Portugal	60.37	67.73	-11%

- As of 16<sup>th</sup> Dec, this daily data is now sourced from Our World In Data (OWID) instead of ECDC as they have switched to weekly reporting (Thursday evenings).
- OWID source their confirmed cases and deaths data from the COVID-19 Data Repository by the Center for Systems Science and Engineering (CSSE) at Johns Hopkins University (JHU). <https://github.com/owid/covid-19-data/tree/master/public/data>



## EU/UK ranked by 7 day percentage change (6<sup>th</sup> April)

EU and the UK	7 day incidence	Previous 7 day incidence	% change in 7 day incidence
Denmark	76.22	49.57	54%
Cyprus	388.97	278.23	40%
Greece	206.21	170.1	21%
Croatia	289.63	250.02	16%
Lithuania	208.79	184.18	13%
Portugal	32.01	28.36	13%
Spain	90.11	88.76	2%
Sweden	381.69	377.35	1%
Slovenia	320.02	324.54	-1%
Netherlands	296.05	314.21	-6%
France	375.67	399.73	-6%
Romania	190.1	206.05	-8%
Austria	226.12	250.51	-10%
Italy	207.89	233.86	-11%
<b>Ireland</b>	<b>70.13</b>	<b>80.2</b>	<b>-13%</b>
Luxembourg	218.86	254.48	-14%
Poland	443.59	525.69	-16%
Belgium	240.14	293.94	-18%
Finland	58.17	74.58	-22%
Hungary	476.28	617.06	-23%
Latvia	148.45	192.93	-23%
Germany	108.94	142.51	-24%
Slovakia	117.28	160.8	-27%
Bulgaria	265.28	369.65	-28%
United Kingdom	34.12	51.33	-34%
Estonia	396.82	600.06	-34%
Czechia	294.86	449.44	-34%
Malta	79.27	132.26	-40%

- As of 16<sup>th</sup> Dec, this daily data is now sourced from Our World In Data (OWID) instead of ECDC as they have switched to weekly reporting (Thursday evenings).
- OWID source their confirmed cases and deaths data from the COVID-19 Data Repository by the Center for Systems Science and Engineering (CSSE) at Johns Hopkins University (JHU). <https://github.com/owid/covid-19-data/tree/master/public/data>