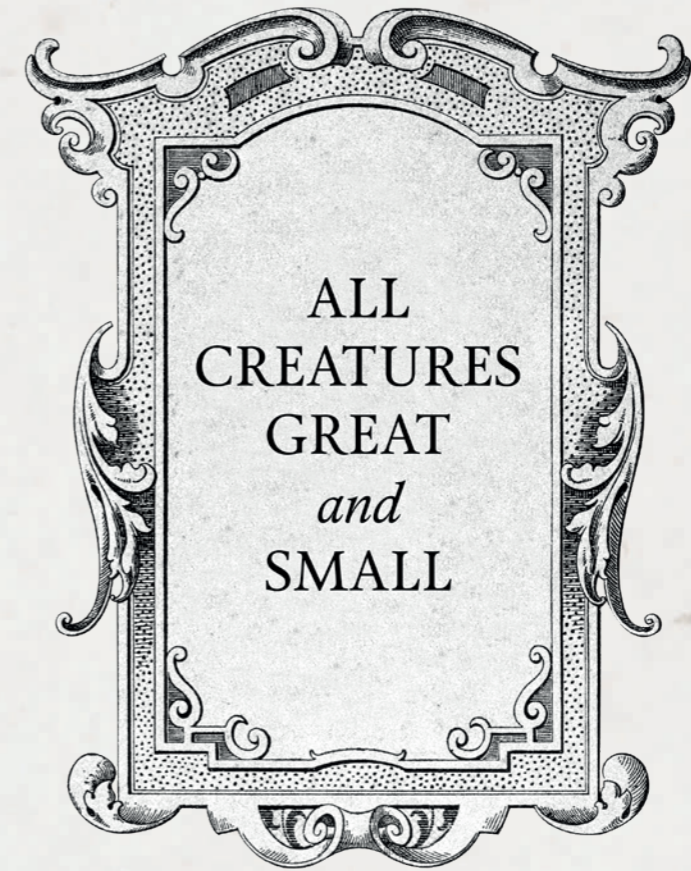


ALL  
CREATURES  
GREAT  
*and*  
SMALL

They have granted me life and breath  
your and thy visitation hath preserved my spirit.



ALL  
CREATURES  
GREAT  
*and*  
SMALL

© Government of Ireland and Crown Copyright 2020

© *Cóipcheart Rialtas na hÉireann agus an Choróin 2020*

Published by the Office of Public Works (OPW) and the Department of Finance, Northern Ireland (DoF)

*Arna fhoilsiú ag Oifig na nOibreacha Poiblí (OPW) agus ag An Roinn Oideachais, Tuaisceart Éireann (DoF)*

**Design Dearadh:** Ciarán Murphy

**Production Táirgeadh:** Marie Harpur, IJP Print Services

**Print Priontáil:**

**Translation Aistriúchán:** Máirtín Ó Curraoin

Dimensions framed, height preceding width, unless otherwise noted

*Toisí frámaíthe, airde roimh leithead, mura luaitear a mhalairt*

**Front cover:** *Visitation* by Gavin Lavelle, OPW collection

*Clúdach tosaigh:* *Visitation le Gavin Lavelle, bailiúchán OPW*



**OPW** Oifig na  
nOibreacha Poiblí  
Office of Public Works

## FOREWORD

Welcome to *All Creatures Great and Small*, the latest in the series of joint art exhibitions organised by the Office of Public Works (OPW) and the Department of Finance (DoF). Both Departments have worked in partnership organising art exhibitions since the 1990s. These exhibitions have toured many venues across the island, bringing both collections to wider public audiences.

The focus of this year's exhibition is the natural world - insects, animals and sea creatures. The thirty-three artworks included reflect the diversity of artworks in both collections and the paintings, photographs, prints and sculpture in the exhibition celebrate the vision of each individual artist. Without their creativity there could not be an exhibition for you to enjoy. We also thank the venues welcoming the exhibition in 2020 and 2021. The catalogue is available on our websites so that audiences can also view the artworks online.

It is with great pleasure that we, as Ministers for the two collaborating Departments, bring you this exhibition.

## BROLLACH

Fáilte chuig *Gach Ainmhí Mór agus Beag*, an ceann is déanaí de shraith comhthaispeántas ealaíne arna n-eagrú ag Oifig an nOibreacha Poiblí (OPW) agus an Roinn Airgeadais (DoF). Tá an dá Roinn ag obair i gcomhar chun taispeántais ealaíne a eagrú ó na 1990idí i leith. Tugadh na taispeántais sin ar camchuart chuig mórán ionad ar fud an oileáin, agus dá réir sin cuireadh an dá bhailiúchán os comhair lucht féachana poiblí níos forleithne.

Tá taispeántas na bliana seo dírithe ar an dúlra - feithidí, ainmhithe agus ainmhithe mara. Léiríonn na trí cinn is tríocha de shaothair ealaíne atá san áireamh éagsúlacht na saothar ealaíne sa dá bhailiúchán agus déanann na pictiúir, na grianghraif, na priontaí agus an dealbhóireacht sa taispeántas an fhís a bhí ag gach ealaíontóir ar leith a cheiliúradh. D'uireasa a gcruthaitheachta siúd ní bheadh aon taispeántas ann le taitneamh a bhaint as. Gabhaimis buíochas freisin leis na hionaid a d'fháiltigh roimh an taispeántas in 2020 agus 2021. Tá an chatalóg ar fáil ar ár suíomhanna gréasáin ionas go bhféadfaidh an lucht féachana amharc ar na saothair ealaíne ar líne freisin.

Is mór an chúis áthais dúinne, mar Airí sa dá Roinn atá ag obair i gcomhar, an taispeántas seo a chur ar fáil daoibh.



**Patrick O'Donovan**

Minister of State  
*Aire Stáit*

Office of Public Works  
*Oifig na nOibreacha Poiblí*



**Conor Murphy**

Minister for Finance  
*Aire Airgeadais*

Department of Finance  
*An Roinn Airgeadais*



## INTRODUCTION

The Department of Finance of Northern Ireland (DoF) and the Office of Public Works (OPW) have worked together for over twenty years to share artworks in the Northern Ireland Civil Service Collection and the OPW managed State Art Collection with wider audiences. The two collections are mainly on display in public buildings and the purpose of collaborating on the annual exhibition is to bring these artworks to new audiences. The exhibitions have toured numerous venues across the island and have featured works by several hundred artists. The cross-border exhibition also opens up opportunities for both Departments to collaborate with other partners, such as arts organisations, cultural venues, schools, colleges, and local government arts offices.

Each year, the exhibition is given a distinctive theme. In previous years, exhibitions have focused on themes such as still life, portraiture, sculpture, landscape painting, and printmaking. Every exhibition has been accompanied by a fully illustrated catalogue and this year's catalogue is the twenty-second in the series. Since the series was first published, it has been researched and written by the staff managing the two collections, but also over the years, art historians, graduates, students and independent curators have been invited to contribute to the catalogues. The catalogues are published now in both English and Irish.

The theme for the 2020/2021 exhibition is 'all creatures great and small' and the focus is on artworks from both collections that depict birds, animals, fish and insects and their interaction with humanity. The exhibition

## RÉAMHRÁ

Le breis agus fiche bliain anuas, tá Roinn Airgeadais Thuaisceart Éireann (DoF) agus Oifig na nOibreacha Poiblí (OPW) ag obair i gcomhar chun saothair ealaíne i mBailiúchán Státseirbhís Thuaisceart Éireann agus i mBailiúchán Ealaíne an Stáit arna bhainistiú ag OPW a roinnt le lucht féachana níos forleithne. Bíonn an dá bhailiúchán ar taispeánta i bhfoirgnimh phoiblí den chuid is mó agus tá sé mar chuspóir ag an gcomhoibriú ar an taispeántas bliantúil na saothair ealaíne sin a chur os comhair lucht féachana nua. Tugadh na taispeántais ar camchuart chuig mórán ionad ar fud an oileáin agus tá saothair le cúpla céad ealaíontóir le feiceáil iontu. Tugann an taispeántas trasteorann deiseanna freisin don dá Roinn comhoibriú le comhpháirtithe eile, amhail eagraíochtaí ealaíon, ionaid chultúrtha, scoileanna, coláistí agus oifigí ealaíon na rialtas áitiúil.

Bíonn téama ar leith ag baint leis an taispeántas gach bliain. Sna blianta roimhe seo, bhí na taispeántais dírithe ar théamaí amhail ábhar neamhbheo, portráidíocht, dealbhóireacht, péintéireacht tírdhreacha agus déanamh priontaí. Bhí catalóg lánmhaisithe ag gabháil le gach taispeántas agus tá catalóg na bliana seo ar an dara ceann is fiche sa tsraith. Ó foilsíodh an tsraith i dtús báire, rinne an fhoireann a bhainistíonn an dá bhailiúchán an taighde agus an scríbhneoireacht ina leith, ach chomh maith leis sin, thar na blianta, tugadh cuireadh do staraithe ealaíne, céimithe, mic léinn agus coimeádaithe neamhspleácha ábhar a chur ar fáil do na catalóga. Foilsítear na catalóga i mBéarla agus i nGaeilge anois.

includes the work of 31 artists. Each artist brings their own individual approach to the depiction of living creatures and this diversity makes for a thoughtful and interesting exhibition.

The depiction of creatures has been present in art since the earliest of times. Drawings of animals made in mineral pigment dating to over 64,000 years ago have been discovered by archaeologists in recent years in Spain. Such new discoveries continue to add to the history of human creativity.

From ancient times, drawings, paintings and sculptures of creatures have been created for symbolic and allegorical purposes. In temples and tombs, across most world religions before the written word was accessible to all, animal imagery was used for teaching and ritual purposes. Creatures took on symbolic roles in mythological and religious narratives that can vary between cultures and times. In some cultures, a creature can represent positive attributes whilst in others negative (e.g. cat, raven, rabbit, snake, wolf). In the iconography of manuscripts, stained glass windows, and architectural ornamentation creatures play powerful and central roles.

Throughout the history of art, creatures have been created by artists as either the main subject-matter of the artwork such as in equestrian or still life with game paintings or as key participants in mythological and historical visual narratives – battle scenes, sport and hunting scenes. The depiction of wild and domesticated creatures has also been

53.2981°N, 6.2836°W

Tá 'gach ainmhí mór agus beag' mar théama do thaispeántas 2020/2021 agus é dírithe ar shaothair ealaíne ón dá bhailiúchán ina léirítear éin, ainmhithe, iasc agus feithidí agus a n-idirghníomhaíocht leis an duine. San áireamh sa taispeántas tá saothar le 31 ealaíontóir. Tá cur chuige ar leith ag gach ealaíontóir maidir le léiriú a dhéanamh ar ainmhithe beo agus de bharr na héagsúlachta sin tá an taispeántas ina ábhar machnaimh agus ina ábhar spéise.

Bhí ainmhithe á léiriú san ealaín ó thús ama. Le blianta beaga anuas, d'aimsigh seandálaithe sa Spáinn léaráidí d'ainmhithe a rinneadh le lia mhianrach breis agus 64,000 bliain ó shin. Tá fionnachtana nua den chineál sin ag cur go leanúnach leis an stair a bhaineann le cruthaitheacht an chine dhaonna.

Ón gcianaimsir go dtí an lá atá inniu ann, cruthaíodh léaráidí, pictiúir agus dealbha d'ainmhithe ar chúiseanna siombalacha agus fáthchiallacha. I dteampaill agus i dtuamaí, ar fud fhormhór reiligiúin an domhain sula raibh fáil ag cách ar an bhfocal scríofa, baineadh úsáid as íomhánna d'ainmhithe ar mhaithe le teagasc nó le deasghnátha. Ghlac ainmhithe róil shiombalacha chucu féin i scéalta miotaseolaíochta agus reiligiúnacha ar féidir leo athrú ó chultúr go cultúr nó ó aois go haois. I gcultúir áirithe, d'fhéadfadh tréithe dearfacha a bheith á léiriú ag ainmhithe ach i gcultúir eile d'fhéadfadh sé gur tréithe diúltacha a bheadh á léiriú acu (m.sh. cat, fiach dubh, coinín, nathair, mac tíre). Tá róil chumhachtacha agus lárnacha ag ainmhithe san íocónagrafaíocht a bhaineann le lámhscríbhinní, fuinneoga daite, agus maisiú ailtireachta.

treated by individual artists in many different ways, depending on the artist's own artistic approach and the period of the creation of the artwork. The appearance of a creature in a portrait may signify a sitter's personal attributes, social status or their favourite pet. The connection between other species on this planet and ourselves continues to fascinate us.

In making the selection of artworks from both collections for this exhibition, it was decided to include artworks in a variety of artistic media that are by artists at different stages of their careers. Some of the artworks that feature in the exhibition are thought-provoking and others are playful. Each represents the artists' distinctive visions and signifies their intent to make creatures great and small central to the artworks.

Ar fud stair na healaíne, chruthaigh ealaíontóirí ainmhithe mar phríomhábhar an tsaothair ealaíne amhail pictiúir eachaíochta nó ábhar neamhbheo le géim nó mar phríomh-rannpháirtithe i scéalta miotaseolaíochta nó staire a léirítear le pictiúir – radhairc chatha, radhairc spóirt agus seilge. Is iomaí bealach ar léirigh ealaíontóirí aonair ainmhithe fiáine agus ainmhithe clóis, ag brath ar chur chuige an ealaíontóra féin i leith na healaíne agus ar an tréimhse inar cruthaíodh an saothar ealaíne. Dá mbeadh ainmhithe le feiceáil i bportráid d'fhéadfadh sé sin a bheith ina chomhartha ar thréithe pearsanta, ar stádas sóisialta nó ar rogha pheata an tsuiteora. Bímid faoi dhraíocht i gcónaí ag an gceangal idir muid féin agus na speicis eile ar an domhan seo.

Nuair a bhí na saothair ealaíne ón dá bhailiúchán á roghnú don taispeántas seo, socraíodh go gcuirfí saothair ealaíne ó mheáin ealaíne éagsúla san áireamh, ar saothair iad ó ealaíontóirí atá ag céimeanna éagsúla ina ngairmeacha mar ealaíontóirí. Tá ábhar machnaimh i roinnt de na saothair ealaíne atá le feiceáil sa taispeántas seo agus is saothair spraiúla iad cuid eile acu. Léiríonn gach ceann acu fiseanna sainiúla na n-ealaíontóirí agus taispeánann siad go raibh sé ar intinn acu go mbeadh ainmhithe móra agus beaga lárnach sna saothair ealaíne.

Jacquié Moore

Art Adviser  
*Comhairleoir Ealaíne*  
Office of Public Works  
*Oifig na nOibreacha Poiblí*

## Gavin Lavelle *Visitation*



Mixed media collage  
*Colláis meán measctha*  
52 x 45 cm  
2015  
OPW

Janet Mullarney  
*St Anthony's Rabbit*



Limed wood, wool & metal, one of a series of three  
*Adhmad aolta, olann agus mital, ceann de shraith ina bhfuil trí cinn*  
44.5 x 34.5 x 14.5 cm  
2016  
OPW

*Oryctolagus cuniculus*

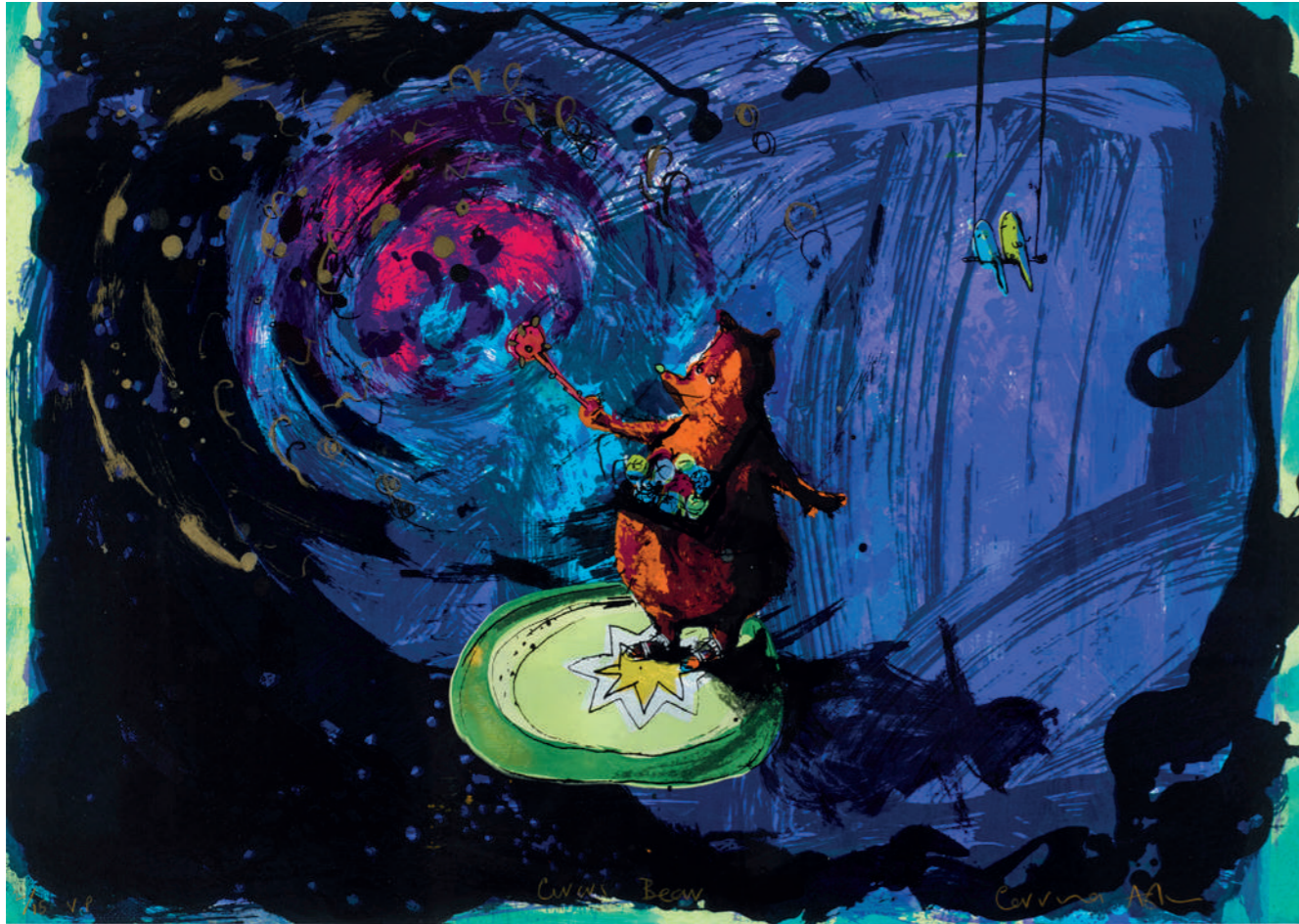
Felicity Shun  
*Untitled (Butterfly)*



Screenprint, 3/25  
*Scagphrionta, 3/25*  
56 x 40.5 cm  
Purchased 2020  
*Arna cheannach in 2020*  
DoF

*Danaus plexippus*

Corrina Askin  
*Circus Bear*



Screenprint, 2/15 V/P  
*Scaghrionta*, 2/15 V/P  
50 x 70 cm  
Purchased 2020  
*Arna cheannach in 2020*  
DoF

Gabhann Dunne  
*He rode him lightly*



Oil on panel  
*Ola ar phainéal*  
36.5 x 46.5 cm  
2017  
OPW

Sarah Longley  
*Mist above Angel Hill*



Charcoal on paper  
*Gualach ar pháipéar*  
122 x 170 cm  
2017  
DoF

Aoife Layton  
*Habitat*



Mezzotint, 4/10  
*Meisitint, 4/10*  
47.5 x 44.5 cm  
2014  
OPW



Bono et al.  
*Peter & the Wolf* (4)



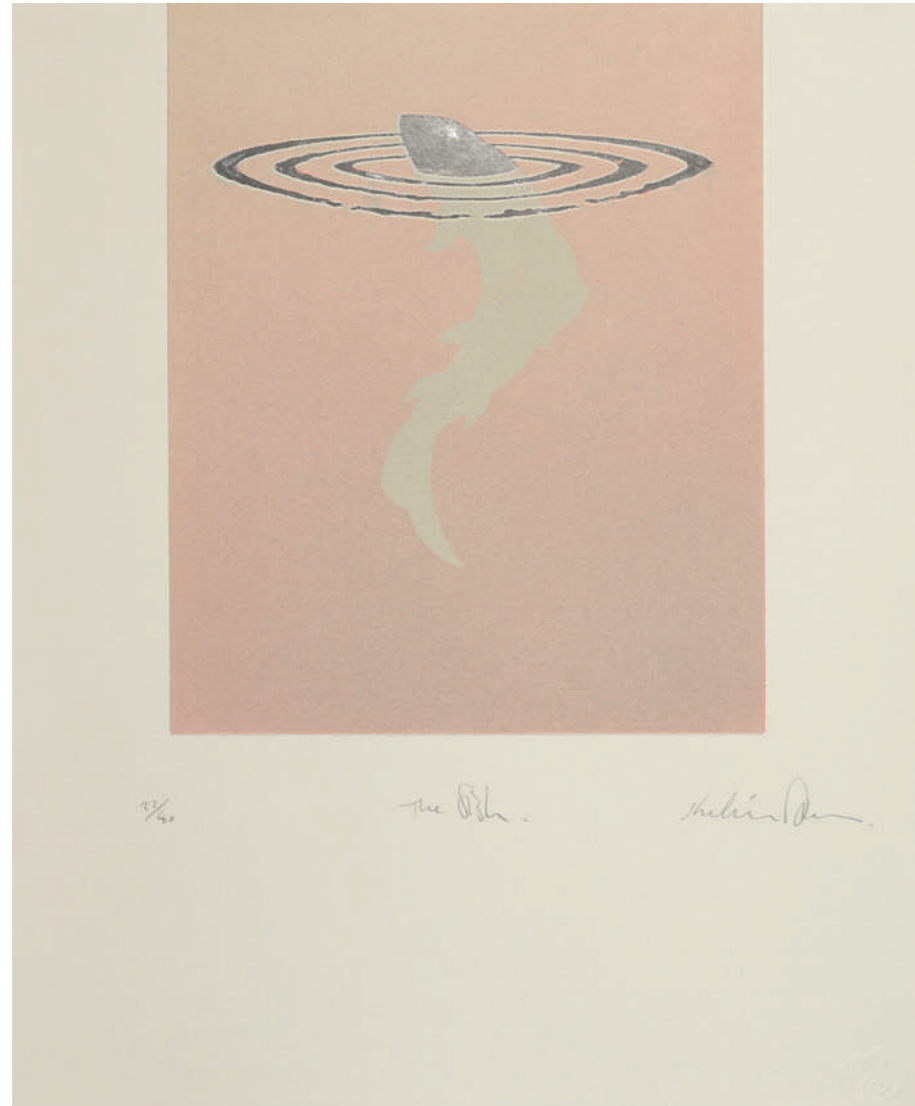
Giclée print, 152/200  
*Prionta Giclée*, 152/200  
37 x 84.5 cm  
2003  
OPW

John Kindness  
*Anatomy of a Rubber Duck*



Etching, 34/50  
*Eitseáil*, 34/50  
59 x 75 cm  
2014  
OPW

Kelvin Mann  
*The Fish*



Screenprint with flock, 22/40  
*Scaghrionta le focas, 22/40*  
62.5 x 52.5 cm  
2015  
OPW

Ivan Frew  
*Thoroughbred*



Engraving, 1/20 V/E  
*Greanadh, 1/20 V/E*  
27 x 33.5 cm  
Purchased 2020  
*Arna cheannach in 2020*  
DoF

Joanna Martin  
*Snowy Pigs*



Linocut, 3/14  
Gearradh Líonóile, 3/14  
27 x 27 cm  
2019  
DoF

Rebecca Homfray  
*The Tortoise & The Hare*



Linocut, 3/25  
Gearradh Líonóile, 3/25  
57 x 48 cm  
2018  
OPW

James MacIntyre  
*The Young Foal*



Watercolour on paper  
*Uiscadhath ar pháipéar*  
53 x 63 cm  
1991  
DoF

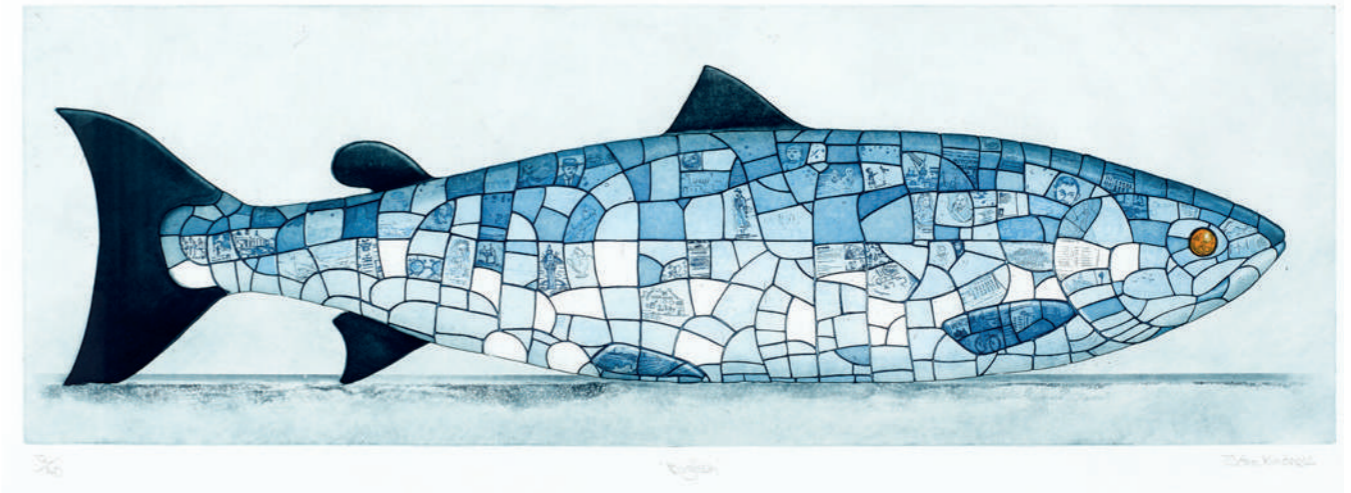
Tighe O'Donoghue/Ross  
*Tyger*



Etching, drypoint and aquatint, A/P  
*Eitseáil, turbheara agus prionta uiscimire, A/P*  
70.5 x 73.5 cm  
1995  
OPW

Barbara Rae  
*Tundra Bear*

John Kindness  
*Big Fish*



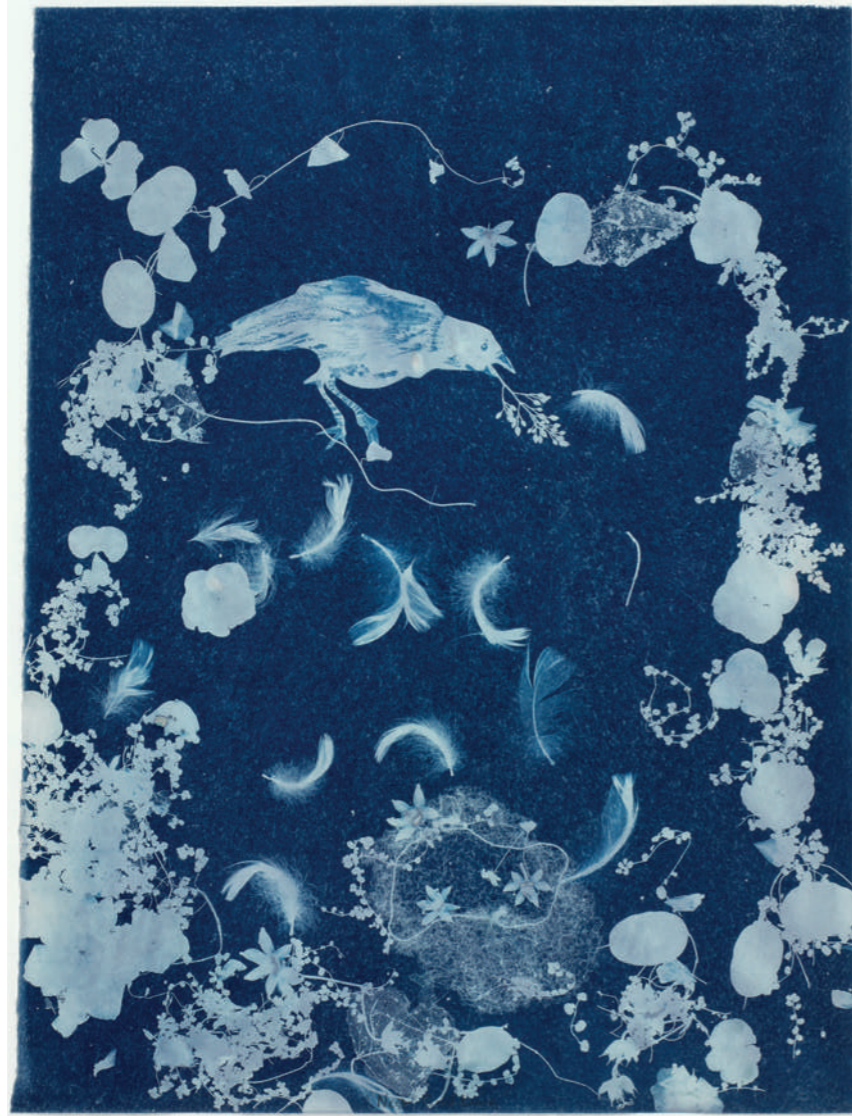
Monotype  
*Monaiprionta*  
76.5 x 64 cm  
2018  
OPW

Etching and aquatint  
*Eitseáil agus prionta uiscimire, 12/40*  
117 x 57 cm  
2017  
DoF

*Ursus maritimus*

*Magnus piscis*

Maura Lynch  
*Nest Building*



Cyanotype, 1/1  
*Cianaiphrinta, 1/1*  
60.5 x 45 cm  
2019  
DoF

Thomas Carr OBE  
*Leverogue Corner near Crawfordsburn*



Oil on board  
*Ola ar chláir*  
55 x 102 cm  
1959  
DoF

Rachel Joynt  
*Goddess*



Patinated bronze, 2/5  
*Cré-umha paiteanaithe, 2/5*  
40 x 40 x 20 cm  
2008  
OPW

Cecil Maguire  
*The Mournes Annalong*



Oil on board  
*Ola ar chlár*  
50 x 60 cm  
1983  
DoF

Sven Sandberg  
*Lady with Parrot*



Oil on linen  
*Ola ar líneadach*  
47 x 36.5 cm  
2018  
OPW

Jeffrey Morgan  
*Wren, Carrigskeewaun, Michael Longley*



Oil on linen  
*Ola ar líneadach*  
122 x 95 cm  
2016  
DoF



Dara Vallely  
*Bull 1*



Oil on canvas  
*Ola ar chanbhás*  
66 x 83 cm  
Purchased 2000  
*Arna cheannach in 2000*  
DoF

Colin Martin  
*Dog (Motion Capture)*



Etching, 2/30  
*Eitseáil, 2/30*  
70 x 67.5 cm  
2019  
OPW

Linda McWha  
*The Otter*



Oil on canvas  
*Ola ar chanbhás*  
28 x 38 cm  
Purchased 1996  
*Arna cheannach in 1996*  
DoF

Eamonn McCrory  
*Fish*



Hand tinted collagraph, V/E  
*Collagraf imrithe de láimh, V/E*  
44 x 54.5 cm  
2018  
DoF

Tighe O'Donoghue/Ross  
*Elephant*



Etching, drypoint and hand colouring  
*Eitseáil, prionta turbheara agus dathúchán de lámh*  
74 x 61.5 cm  
1995  
OPW

Atsushi Kaga  
*Clarity, flowers and sometimes happiness*



Acrylic on canvas  
*Aicrileach ar chanbhás*  
103 x 83 cm  
2008  
OPW

Yvette Monahan  
*Caterpillars*



C-type print  
*Prionta C-chineálach*  
72 x 83 cm  
2012  
OPW

Pen Jones  
*Night Call*



Ceramic, monoprint  
*Ceirmeach, monaiprionta*  
38 x 24 cm  
2019  
DoF

Bruce C. Marshall  
*Gibbon*



Giclée print on aluminium, 1/5  
*Prionta Giclée ar alúmanam, 1/5*  
70 x 70 cm  
2019  
DoF

*Hylobatidae*

Frieda Meaney  
*Rosacea*



Photopolymer etching, 1/5  
*Eitseáil fótapolaiméire, 1/5*  
71 x 54 cm  
2013  
OPW

*Athyria rosacea*

INDEX OF  
ARTISTS

INNÉACS NA  
NEALAÍONTÓIRÍ

Gavin  
Lavelle

9



Janet  
Mullarney

10



Felicity  
Shun

11



Barbara  
Rae

24



John  
Kindness

25



Maura  
Lynch

26



Thomas  
Carr OBE

27



Rachel  
Joynt

28



Cecil  
Maguire

29



Corrina  
Askin

12



Gabhann  
Dunne

13



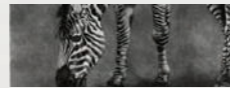
Sarah  
Longley

14



Aoife  
Layton

15



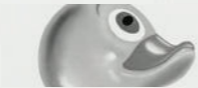
Bono  
et al.

16



John  
Kindness

17



Sven  
Sandberg

30



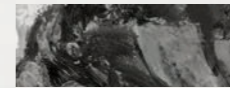
Jeffrey  
Morgan

31



Dara  
Vallely

32



Colin  
Martin

33



Linda  
McWha

34



Eamonn  
McCrorry

35



Kelvin  
Mann

18



Ivan  
Frew

19



Joanna  
Martin

20



Rebecca  
Homfray

21



James  
MacIntyre

22



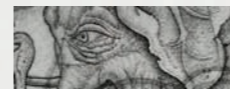
Tighe  
O'Donoghue/Ross

23



Tighe  
O'Donoghue/Ross

36



Atsushi  
Kaga

37



Yvette  
Monahan

38



Pen  
Jones

39



Bruce C.  
Marshall

40



Frieda  
Meaney

41



## ACKNOWLEDGEMENTS

### ADMHÁLACHA

**Exhibition curated by** *An taispeántas á léiriú ag:* Teresa Eddery and Jacquie Moore, OPW

**Organised in partnership with Department of Finance** *Arna eagrú i gcomhar leis an Roinn Airgeadais:* Duncan Morris, Nigel Bonar, Lynsay Hill

**Assisted by the OPW Art Management team** *Le cúnamh ó fhoireann Bainistíochta Ealaíne an OPW:* Laura Buckley, Linda Connolly, Dorothea Depner, Louise Kelly, Davey Moor, Marian O'Brien, Avril Percival

**OPW student research team** *Foireann taighde mac léinn an OPW:* Lochlainn Byrne, Mia Hayes, Robyn Young

**Photography** *Grianghrafadóireacht:*

**OPW:** Gillian Buckley

**DoF:** Bryan Rutledge

A sincere thanks to the included artists and their representative galleries for assistance with this exhibition.

*Buíochas ó chroí leis na healaíontóirí atá san áireamh agus lena ndánlanna ionadaíocha as an gcúnamh a thug siad leis an taispeántas seo.*

## RESEARCH RESOURCES

### ACMHAINNÍ TAIGHDE

[aoifelayton.com](http://aoifelayton.com)

[artuk.org](http://artuk.org)

[berlinopticiansgallery.com](http://berlinopticiansgallery.com)

[bpw.org.uk](http://bpw.org.uk)

[barbararae.com](http://barbararae.com)

[chimera-gallery.com](http://chimera-gallery.com)

[corkprintmakers.ie](http://corkprintmakers.ie)

[curlewcottagedesign.co.uk](http://curlewcottagedesign.co.uk)

[daravallely.com](http://daravallely.com)

[emccrory.com](http://emccrory.com)

[friedameaney.com](http://friedameaney.com)

[gabhanndunne.ie](http://gabhanndunne.ie)

[gibbonsnicolas.com](http://gibbonsnicolas.com)

[graphicstudiodublin.com](http://graphicstudiodublin.com)

[janetmullarney.com](http://janetmullarney.com)

[kelvinmann.com](http://kelvinmann.com)

[kilcockartgallery.ie](http://kilcockartgallery.ie)

[lavelleartgallery.ie](http://lavelleartgallery.ie)

[leinsterprintstudio.com](http://leinsterprintstudio.com)

[molesworthgallery.com](http://molesworthgallery.com)

[motherstankstation.com](http://motherstankstation.com)

[odonoghueross.com](http://odonoghueross.com)

[penandmerve.com](http://penandmerve.com)

[racheljoynt.com](http://racheljoynt.com)

[sarahlongley.co.uk](http://sarahlongley.co.uk)

[seacourt-ni.org.uk](http://seacourt-ni.org.uk)

[sofinearteditions.com](http://sofinearteditions.com)

[solomonfineart.ie](http://solomonfineart.ie)

[stoneypress.ie](http://stoneypress.ie)

[svensandberg.com](http://svensandberg.com)

[taylorgalleries.ie](http://taylorgalleries.ie)

[yvette-monahan.com](http://yvette-monahan.com)



Phylum: Chordata

POST CARD  
CARTOLINA

