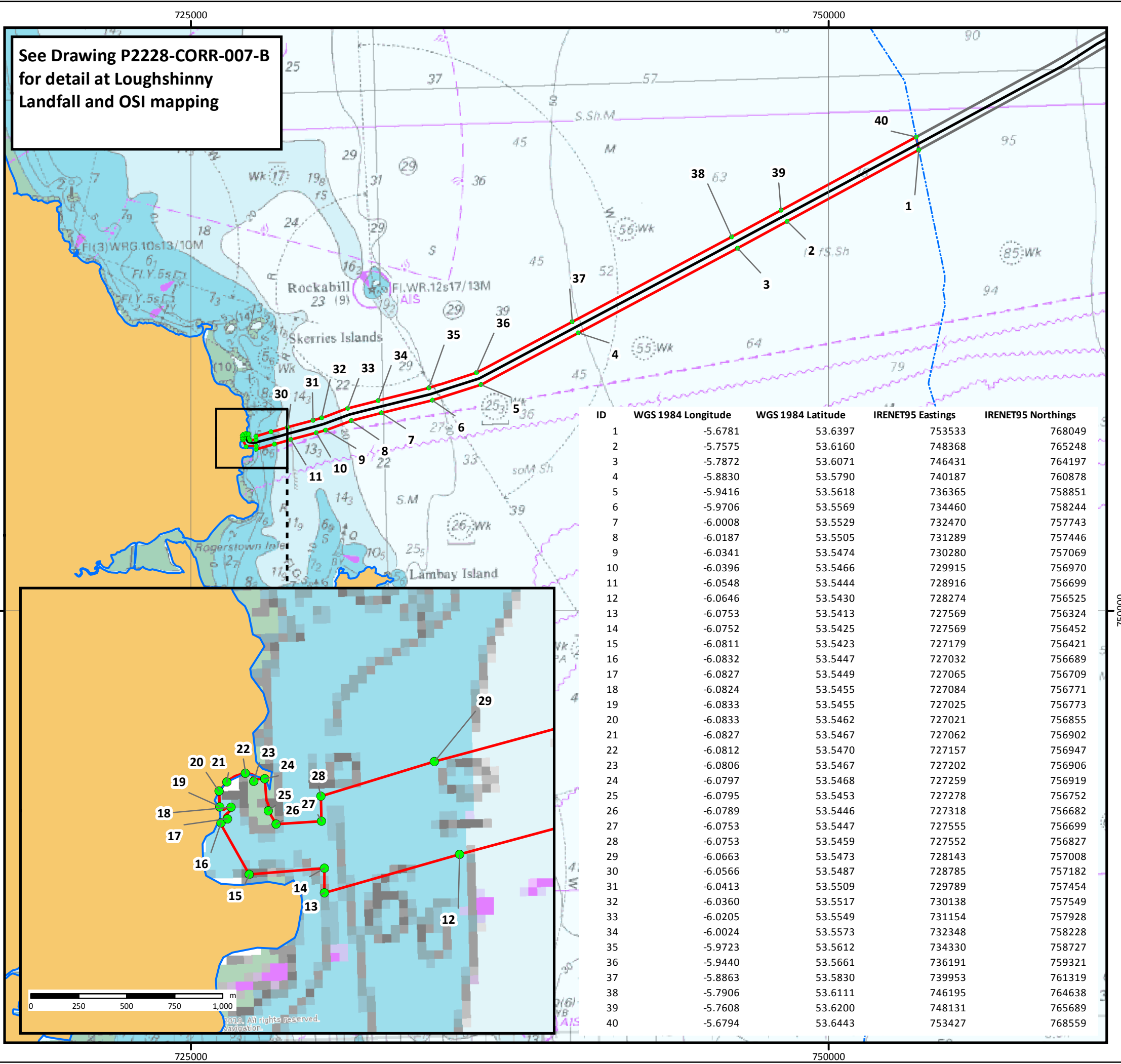
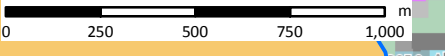
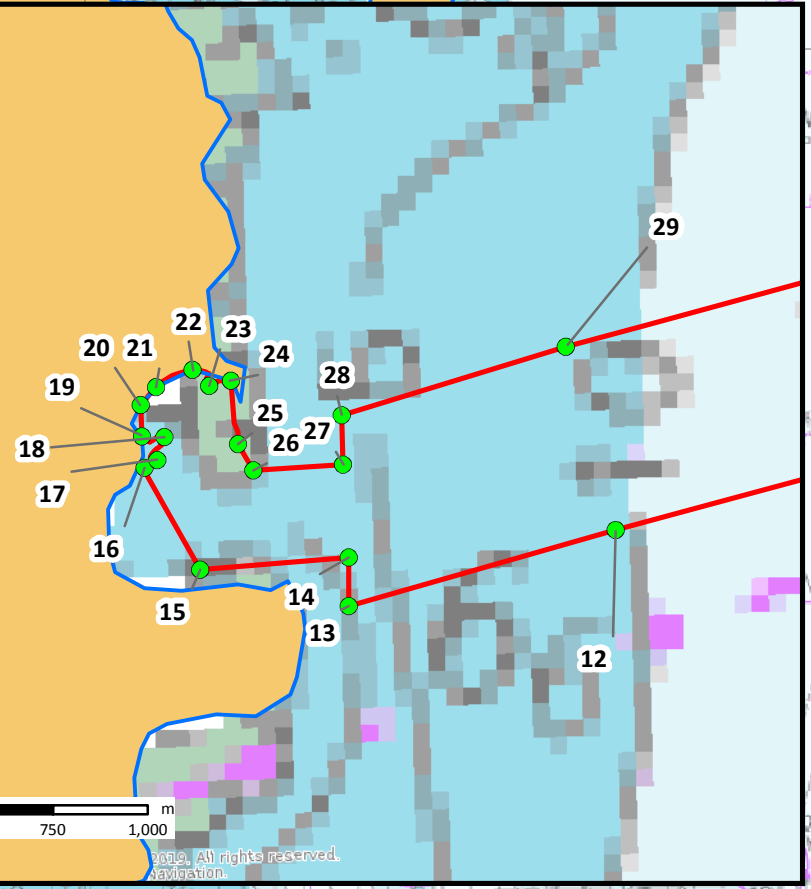


See Drawing P2228-CORR-007-B for detail at Loughshinny Landfall and OSI mapping



ID	WGS 1984 Longitude	WGS 1984 Latitude	IRENET95 Eastings	IRENET95 Northings
1	-5.6781	53.6397	753533	768049
2	-5.7575	53.6160	748368	765248
3	-5.7872	53.6071	746431	764197
4	-5.8830	53.5790	740187	760878
5	-5.9416	53.5618	736365	758851
6	-5.9706	53.5569	734460	758244
7	-6.0008	53.5529	732470	757743
8	-6.0187	53.5505	731289	757446
9	-6.0341	53.5474	730280	757069
10	-6.0396	53.5466	729915	756970
11	-6.0548	53.5444	728916	756699
12	-6.0646	53.5430	728274	756525
13	-6.0753	53.5413	727569	756324
14	-6.0752	53.5425	727569	756452
15	-6.0811	53.5423	727179	756421
16	-6.0832	53.5447	727032	756689
17	-6.0827	53.5449	727065	756709
18	-6.0824	53.5455	727084	756771
19	-6.0833	53.5455	727025	756773
20	-6.0833	53.5462	727021	756855
21	-6.0827	53.5467	727062	756902
22	-6.0812	53.5470	727157	756947
23	-6.0806	53.5467	727202	756906
24	-6.0797	53.5468	727259	756919
25	-6.0795	53.5453	727278	756752
26	-6.0789	53.5446	727318	756682
27	-6.0753	53.5447	727555	756699
28	-6.0753	53.5459	727552	756827
29	-6.0663	53.5473	728143	757008
30	-6.0566	53.5487	728785	757182
31	-6.0413	53.5509	729789	757454
32	-6.0360	53.5517	730138	757549
33	-6.0205	53.5549	731154	757928
34	-6.0024	53.5573	732348	758228
35	-5.9723	53.5612	734330	758727
36	-5.9440	53.5661	736191	759321
37	-5.8863	53.5830	739953	761319
38	-5.7906	53.6111	746195	764638
39	-5.7608	53.6200	748131	765689
40	-5.6794	53.6443	753427	768559



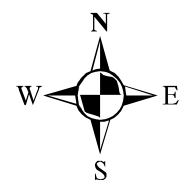
HAVINGSTEN TELECOMMUNICATIONS CABLE

FORESHORE LICENCE MAP

Drawing No: P2228-CORR-006 B

Legend

- Proposed Corridor Vertices
- Havhingsten Cable Route
- Proposed Development
- Irish Offshore
- 12nm Territorial Sea Limit
- ROI Mean High Water



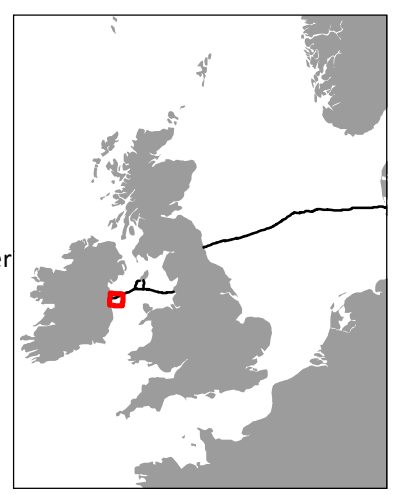
Application Area = 1446 hectares (14.46 km²)

Note: Coordinates provided in WGS 1984 Decimal Degrees (EPSG 42347) and in IRENET95 (Irish Transverse Mercator EPSG 2157)

Map prepared by:
Chris Goode, MSc Water & Environmental Engineering, MEng Civil Engineering

Chris Goode

Intertek Energy and Water Exchange House
Liphook
Hampshire
GU30 7DW



Scale @A3: 1:150,000

Date	Monday, July 29, 2019 12:59:05
Projection	WGS_1984_UTM_Zone_30N
Spheroid	WGS_1984
Datum	D_WGS_1984
Data Source	GEBCO; DCCAE; CDA; MarineFind; ASN
File Reference	J:\P2228\Mxd\02_CORR\P2228-CORR-006.mxd
Created By	Chris Goode
Reviewed By	Emma Langley
Approved By	Paula Daghish

